

北方国际信托股份有限公司 二零二一年年度报告摘要

1. 重要提示
1.1 公司董事会、监事会及董事、监事、高级管理人员保证本报告所载资料不存在虚假记载、误导性陈述或重大遗漏，并对其内容的真实性、准确性和完整性承担个别及连带责任。

Table 1: 3.5 公司董事、监事及高级管理人员简介. Lists names, titles, and roles of board members and management.

Table 2: 2.1 公司简介. Overview of the company's name, address, and registration details.

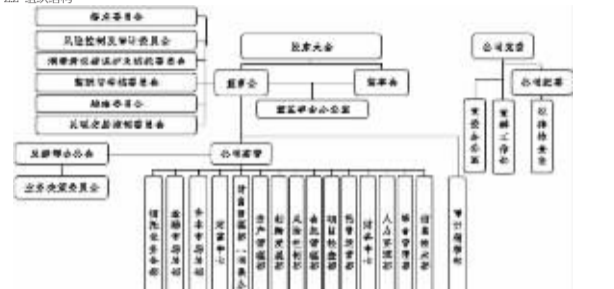


Table 3: 3.6 公司主要财务指标. Financial performance indicators for 2021, including revenue, profit, and asset-liability ratios.

注：自报告期内人员薪酬按照职分工作，对于从事信托投资管理或资产管理等工作的员工，其薪酬水平与信托业务人员薪酬相衔接。

Table 3.1: 3.1 公司的股权结构. Shareholding structure of the company, listing major shareholders and their percentages.

Table 4.1: 4.1 主要资产分布. Distribution of major assets across different categories like real estate and securities.

Table 3.2: 3.2 信托业务概况. Summary of trust business operations, including asset management and investment performance.

Table 4.2: 4.2 主要负债分布. Distribution of major liabilities, primarily related to bank loans and bonds.

Table 3.3: 3.3 信托业务主要风险. Identification of key risks in the trust business, such as credit and market risks.

Table 4.3: 4.3 主要资产减值准备. Details on asset impairment provisions, including bad debt and property losses.

Table 3.4: 3.4 信托业务主要风险. Further details on risk management and mitigation strategies.

Table 4.4: 4.4 主要资产减值准备. Continued details on asset impairment provisions.

Table 3.5: 3.5 信托业务主要风险. Summary of risk management and internal controls.

Table 4.5: 4.5 主要资产减值准备. Summary of asset impairment provisions.

Table 3.6: 3.6 信托业务主要风险. Details on risk management and internal controls.

Table 4.6: 4.6 主要资产减值准备. Details on asset impairment provisions.

Table 3.7: 3.7 信托业务主要风险. Details on risk management and internal controls.

Table 4.7: 4.7 主要资产减值准备. Details on asset impairment provisions.

Table 3.8: 3.8 信托业务主要风险. Details on risk management and internal controls.

Table 4.8: 4.8 主要资产减值准备. Details on asset impairment provisions.

Table 3.9: 3.9 信托业务主要风险. Details on risk management and internal controls.

Table 4.9: 4.9 主要资产减值准备. Details on asset impairment provisions.

Table 3.10: 3.10 信托业务主要风险. Details on risk management and internal controls.

Table 4.10: 4.10 主要资产减值准备. Details on asset impairment provisions.

Table 3.11: 3.11 信托业务主要风险. Details on risk management and internal controls.

Table 4.11: 4.11 主要资产减值准备. Details on asset impairment provisions.

Table 3.12: 3.12 信托业务主要风险. Details on risk management and internal controls.

Table 4.12: 4.12 主要资产减值准备. Details on asset impairment provisions.

Table 3.13: 3.13 信托业务主要风险. Details on risk management and internal controls.

Table 4.13: 4.13 主要资产减值准备. Details on asset impairment provisions.

Table 3.14: 3.14 信托业务主要风险. Details on risk management and internal controls.

Table 4.14: 4.14 主要资产减值准备. Details on asset impairment provisions.

Table 5: 5.1 信托业务主要风险. Summary of risk management and internal controls.

Table 5.2: 5.2 信托业务主要风险. Summary of risk management and internal controls.

Table 5.3: 5.3 信托业务主要风险. Summary of risk management and internal controls.

Table 5.4: 5.4 信托业务主要风险. Summary of risk management and internal controls.

Table 5.5: 5.5 信托业务主要风险. Summary of risk management and internal controls.

Table 5.6: 5.6 信托业务主要风险. Summary of risk management and internal controls.

Table 5.7: 5.7 信托业务主要风险. Summary of risk management and internal controls.

Table 5.8: 5.8 信托业务主要风险. Summary of risk management and internal controls.

Table 5.9: 5.9 信托业务主要风险. Summary of risk management and internal controls.

Table 5.10: 5.10 信托业务主要风险. Summary of risk management and internal controls.

Table 5.11: 5.11 信托业务主要风险. Summary of risk management and internal controls.

Table 5.12: 5.12 信托业务主要风险. Summary of risk management and internal controls.

Table 5.13: 5.13 信托业务主要风险. Summary of risk management and internal controls.

Table 5.14: 5.14 信托业务主要风险. Summary of risk management and internal controls.

Table 5.15: 5.15 信托业务主要风险. Summary of risk management and internal controls.

Table 5.16: 5.16 信托业务主要风险. Summary of risk management and internal controls.

Table 5.17: 5.17 信托业务主要风险. Summary of risk management and internal controls.

Table 5.18: 5.18 信托业务主要风险. Summary of risk management and internal controls.

6. 重要提示
6.1 公司董事会、监事会及董事、监事、高级管理人员保证本报告所载资料不存在虚假记载、误导性陈述或重大遗漏，并对其内容的真实性、准确性和完整性承担个别及连带责任。

Table 6.1: 6.1 信托业务主要风险. Summary of risk management and internal controls.

Table 6.2: 6.2 信托业务主要风险. Summary of risk management and internal controls.

Table 6.3: 6.3 信托业务主要风险. Summary of risk management and internal controls.

Table 6.4: 6.4 信托业务主要风险. Summary of risk management and internal controls.

Table 6.5: 6.5 信托业务主要风险. Summary of risk management and internal controls.

Table 6.6: 6.6 信托业务主要风险. Summary of risk management and internal controls.

Table 6.7: 6.7 信托业务主要风险. Summary of risk management and internal controls.

Table 6.8: 6.8 信托业务主要风险. Summary of risk management and internal controls.

Table 6.9: 6.9 信托业务主要风险. Summary of risk management and internal controls.

Table 6.10: 6.10 信托业务主要风险. Summary of risk management and internal controls.

Table 6.11: 6.11 信托业务主要风险. Summary of risk management and internal controls.

Table 6.12: 6.12 信托业务主要风险. Summary of risk management and internal controls.

Table 6.13: 6.13 信托业务主要风险. Summary of risk management and internal controls.

Table 6.14: 6.14 信托业务主要风险. Summary of risk management and internal controls.

Table 6.15: 6.15 信托业务主要风险. Summary of risk management and internal controls.

Table 6.16: 6.16 信托业务主要风险. Summary of risk management and internal controls.

Table 6.17: 6.17 信托业务主要风险. Summary of risk management and internal controls.

注：本年新增信托项目指在本报告年度内新增的信托项目个数，信托项目年度新增并不等于年内项目个数。