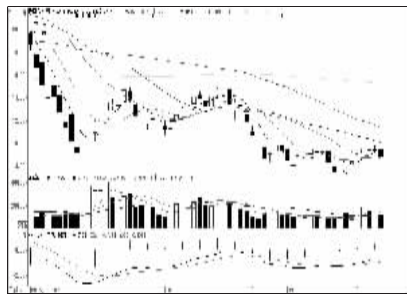


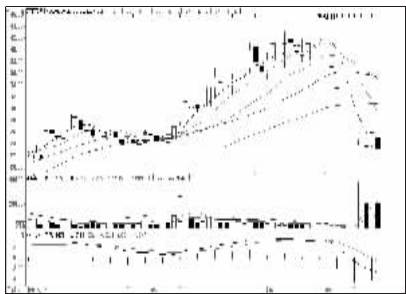
股东人数增减前10

股东人数减少前10



云海金属 (002182): 仍需整固, 关注为主

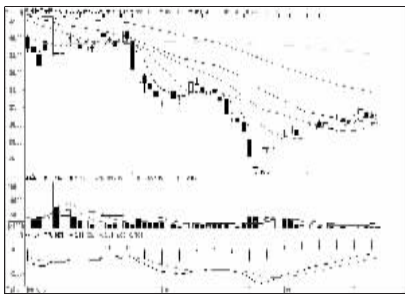
股东人数增加前10



好莱客 (603898): 复牌下跌, 择机离场

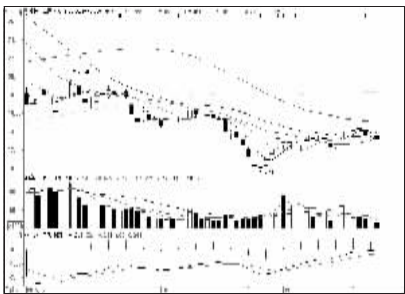
一周资金流入流出金额前10

资金流入金额前10



中国平安 (601318): 估值安全, 持股为宜

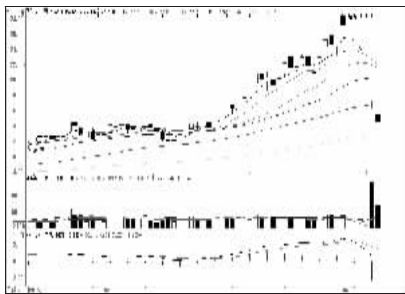
资金流出金额前10



中国中车 (601766): 震荡筑底, 暂时观望

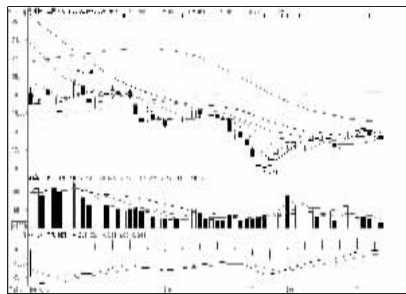
周成交金额

成交突增前10

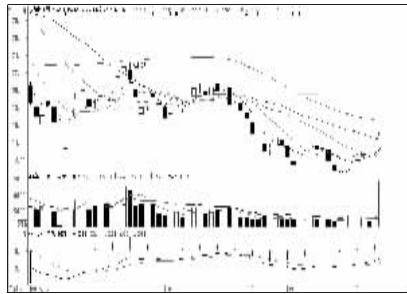


飞利信 (800287): 尚未止跌, 回避为宜

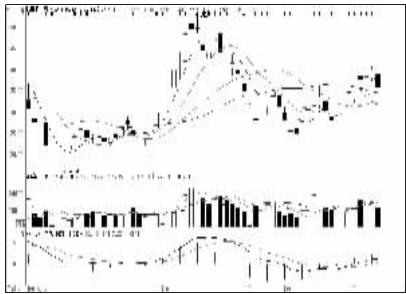
成交金额前8



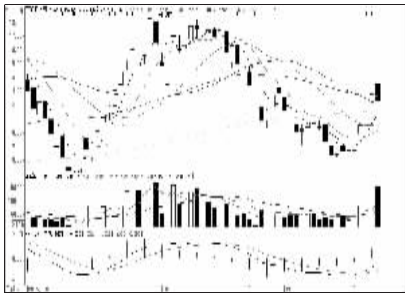
中国中车 (601766): 震荡筑底, 暂时观望



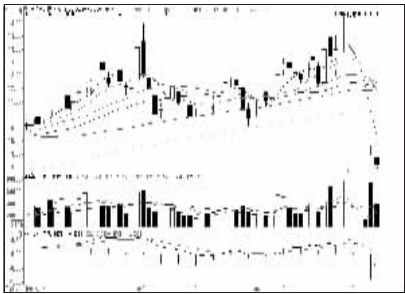
东方电缆 (603606): 放量涨停, 看高一线



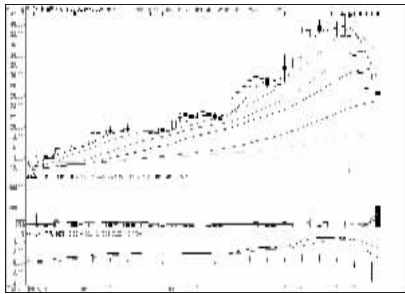
韩建河山 (603616): 调整迹象, 出局为宜



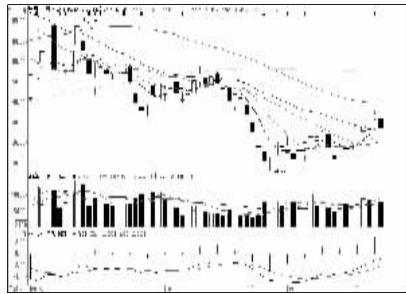
亚星锚链 (601890): 放量收跌, 短线谨慎



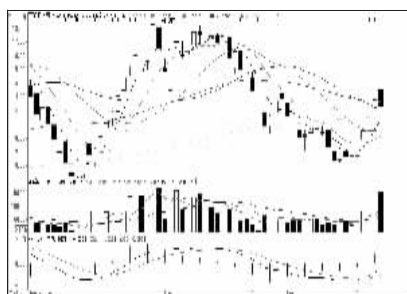
国投电力 (600886): 获利盘仍厚, 观望



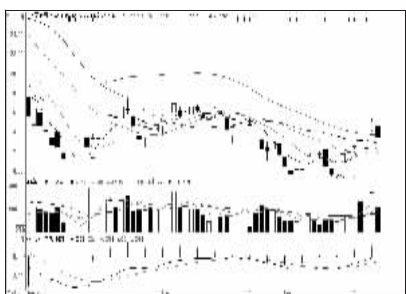
文化长城 (600089): 仍有向下空间, 出局



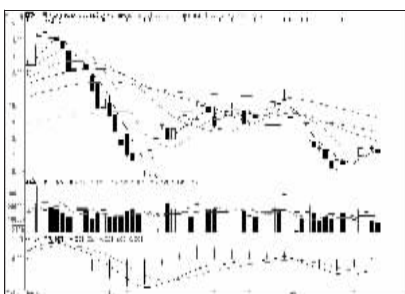
乐视网 (800104): 短线反弹结束, 回避



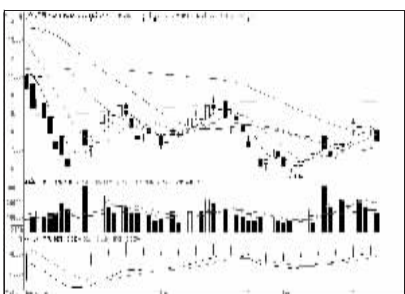
亚星锚链 (601890): 放量收跌, 短线谨慎



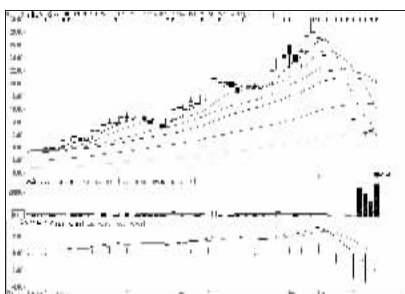
曲美家居 (603818): 短线资金出逃, 回避



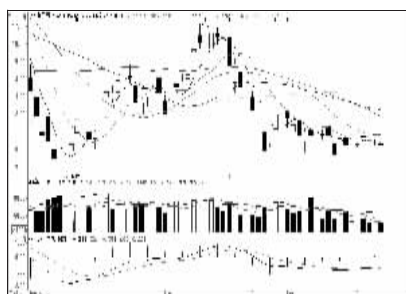
梅花生物 (600873): 短线趋弱, 回避



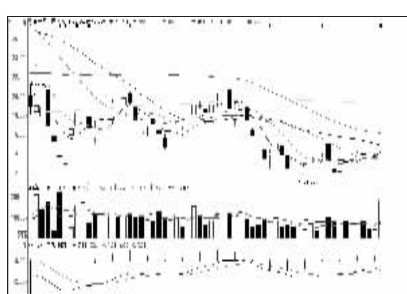
大众公用 (600635): 年线附近整理为主



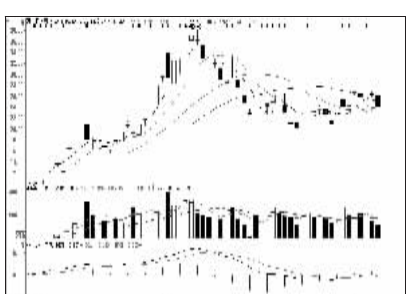
深康佳A (000016): 抛压沉重, 离场观望



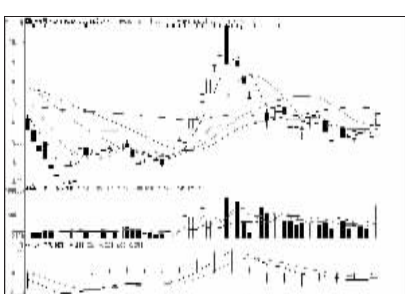
中国重工 (601989): 弱势盘整, 观望为主



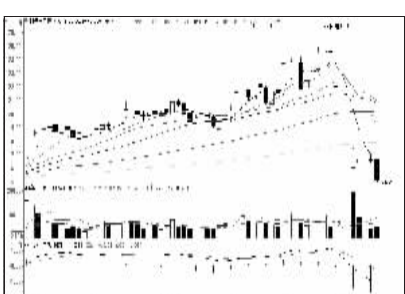
永安药业 (002365): 中线看好, 回调关注



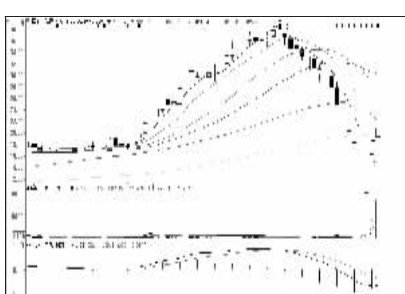
万林股份 (603117): 短线趋弱, 回避



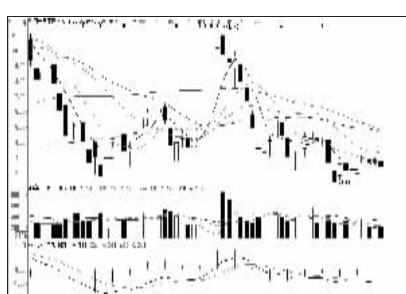
梅雁吉祥 (600868): 升势强劲, 看高一线



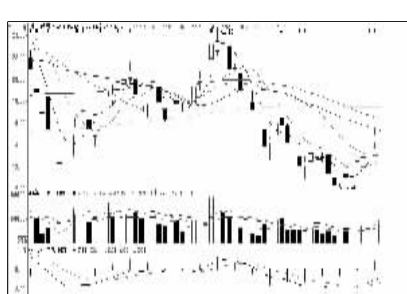
航天电子 (600879): 抛盘沉重, 离场观望



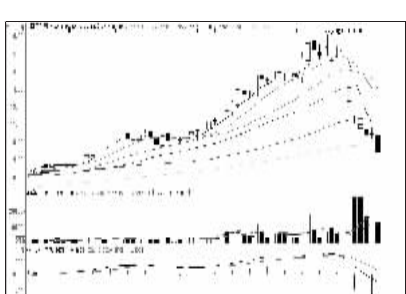
海欣食品 (002702): 估值高企, 回避



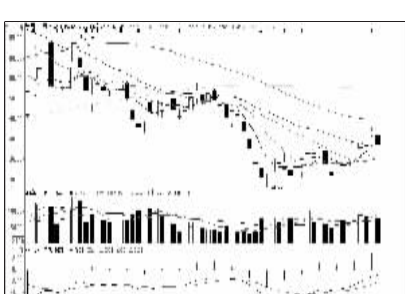
苏宁云商 (002024): 弱势震荡, 回避



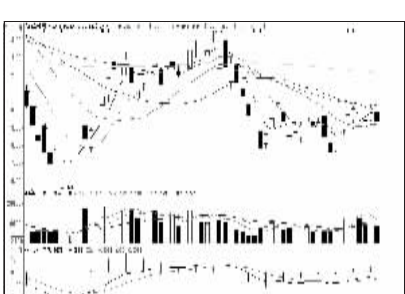
中航黑豹 (600760): 短线获利丰厚, 谨慎



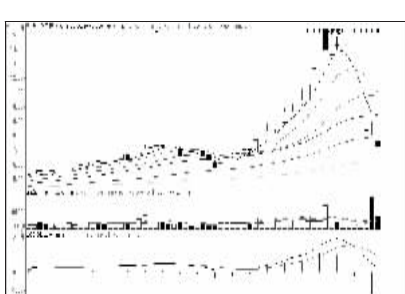
上海三毛 (600689): 复牌补跌, 逢低关注



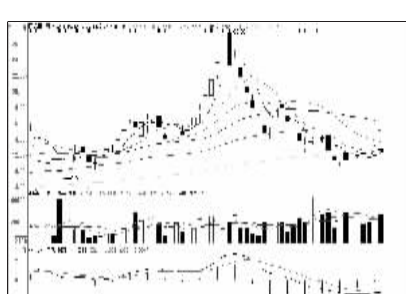
乐视网 (800104): 短线反弹结束, 回避



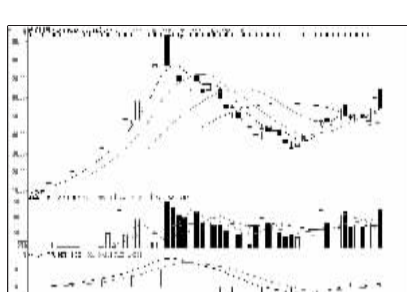
晋西车轴 (600495): 估值偏高, 回避



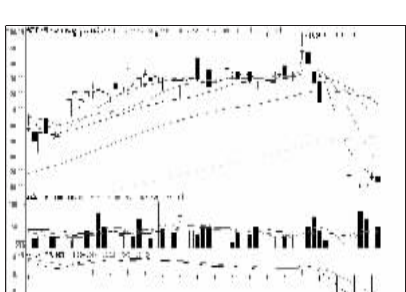
方大化工 (000818): 卖压沉重, 短线观望



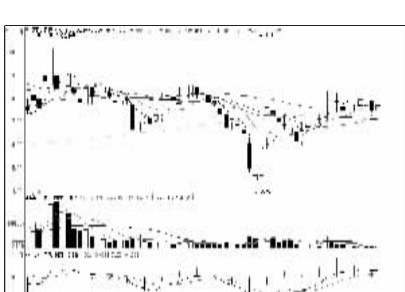
际华集团 (601718): 或将考验年线支撑



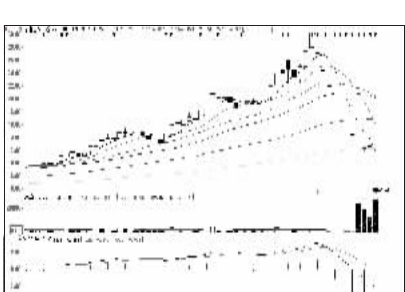
光力科技 (600480): 估值偏高, 离场观望



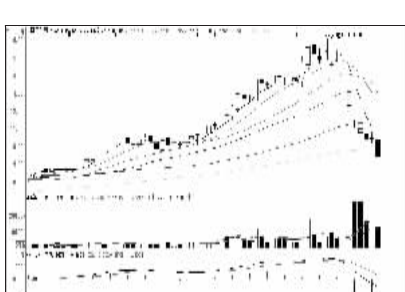
永艺股份 (603600): 仍有下跌空间, 回避



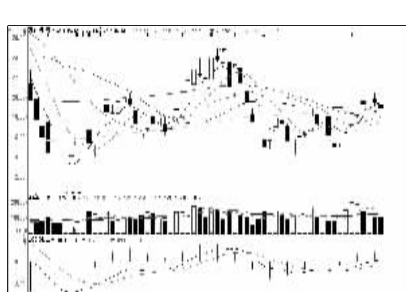
招商银行 (600036): 短线趋弱, 谨慎为宜



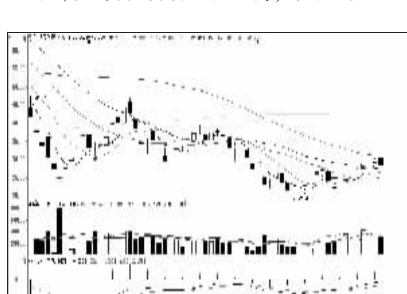
深康佳A (000016): 抛压沉重, 离场观望



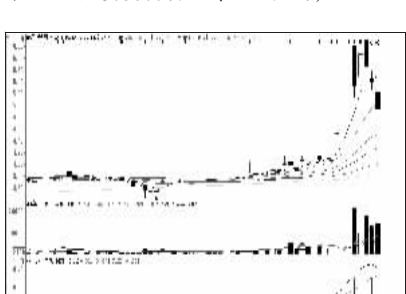
上海三毛 (600689): 复牌补跌, 逢低关注



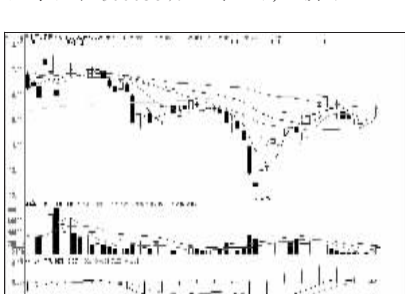
万向钱潮 (000559): 震荡走势, 观望



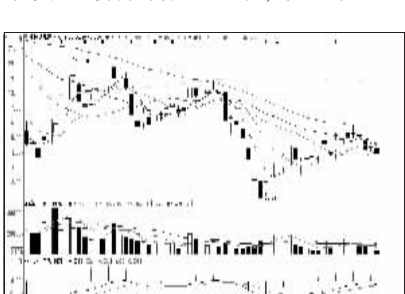
劲拓股份 (800400): 均线压制, 暂时回避



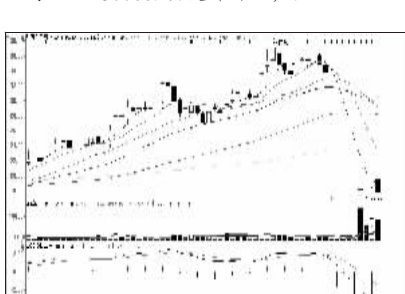
皖江物流 (600575): 高位震荡, 观望为主



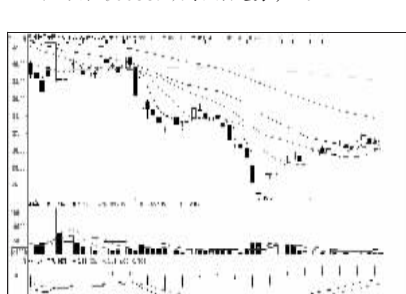
浦发银行 (600000): 强于大势, 持股观望



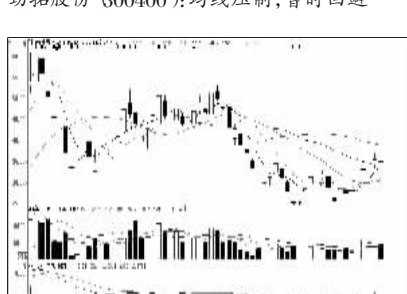
中国铁建 (601186): 弱势格局, 观望



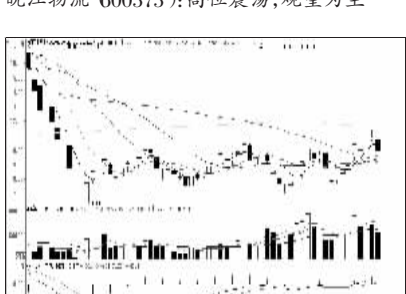
炼石有色 (000697): 跌势未尽, 回避



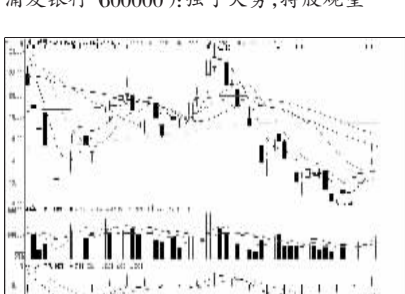
中国平安 (601318): 估值安全, 持股为宜



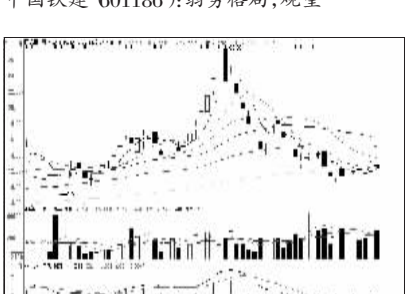
引力传媒 (603598): 区间震荡, 高抛低吸



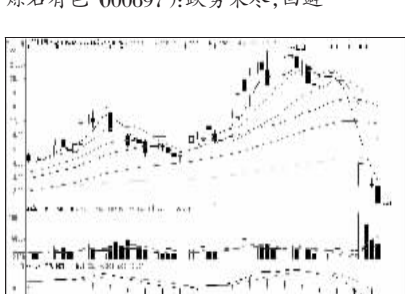
哈高科 (600095): 估值不安全



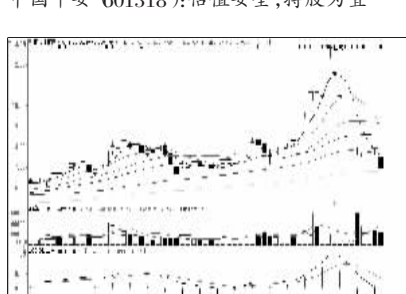
中航黑豹 (600760): 短线获利丰厚, 谨慎



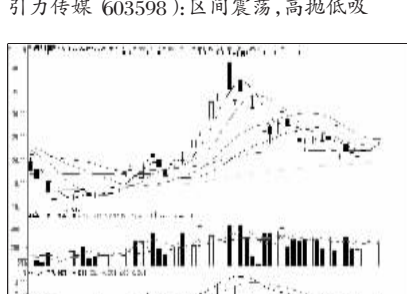
际华集团 (601718): 或将考验年线支撑



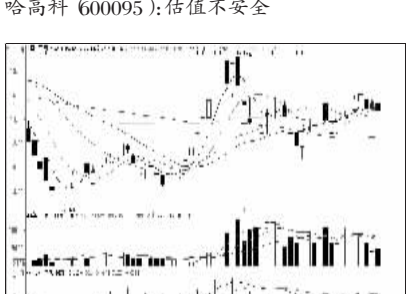
大立科技 (002214): 抛盘沉重, 回避



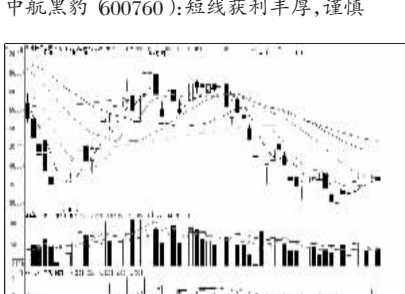
新兴铸管 (000778): 跌势未尽, 观望



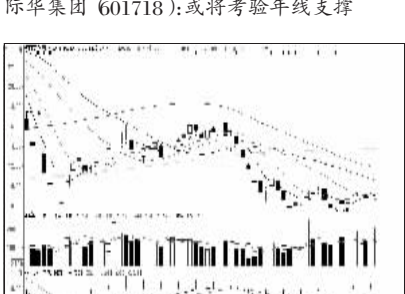
洛阳玻璃 (600876): 上涨有力, 持股为主



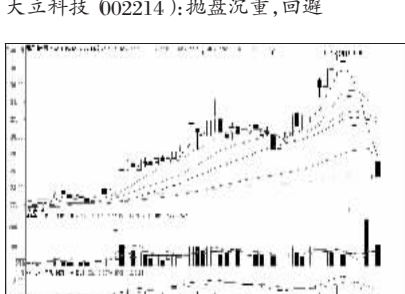
上海九百 (600838): 强势格局, 持股观望



中国卫星 (600118): 估值偏高, 观望为主



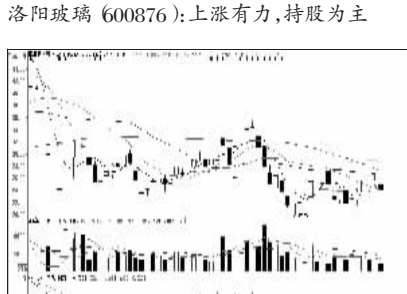
华丽家族 (600503): 震荡筑底, 观望为主



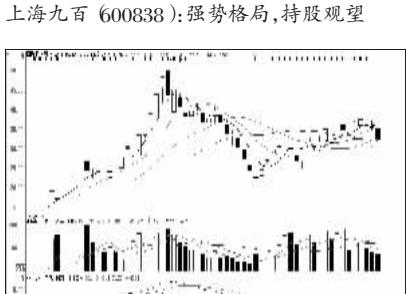
康尼机电 (603111): 仍有下跌空间, 回避



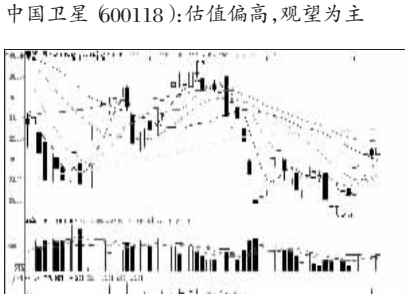
国投电力 (600886): 获利盘仍厚, 观望



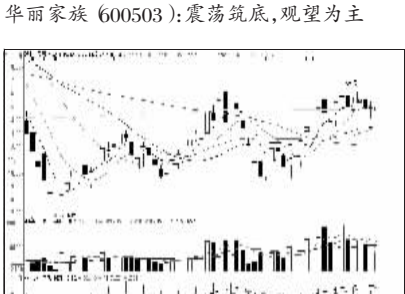
富煌钢构 (002743): 震荡蓄势, 保持观望



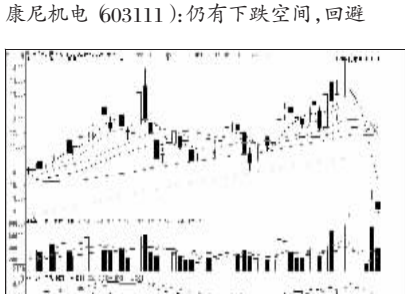
恒通股份 (603223): 阶段浮盈丰厚, 回避



康得新 (002450): 宽幅震荡, 高抛低吸



强生控股 (600662): 强于大势, 持股观望



国投电力 (600886): 获利盘仍厚, 观望



看股票
买彩票
全搞定
大智慧手机版
d.wapgw.cn