

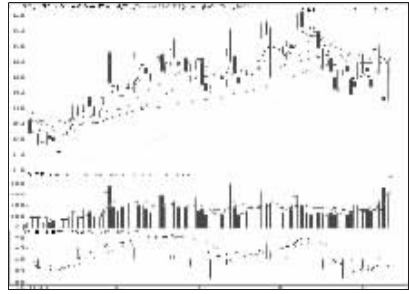
沪深10大权重股

沪市10大权重

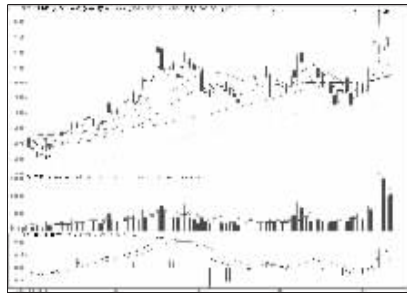


中国石油 (601857):强势震荡,观望为主

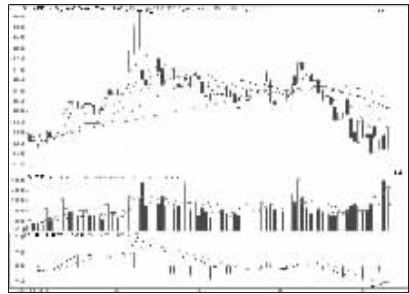
深市10大权重



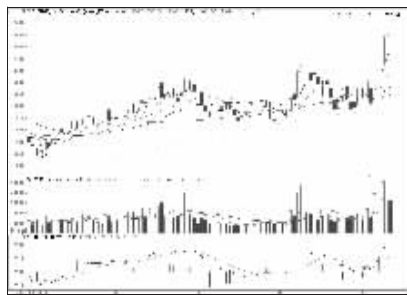
中万宏源 (000166):超跌反弹,谨慎持股



工商银行 (601398):高位震荡,观望为宜



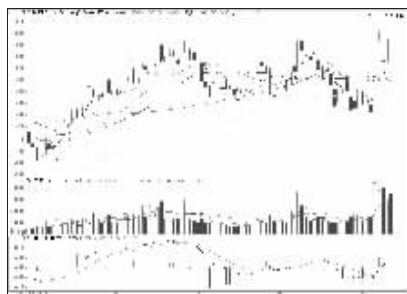
平安银行 (000001):上档承压,观望为主



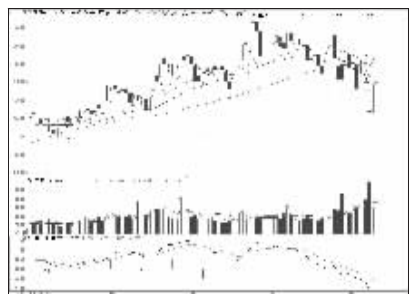
中国银行 (601988):强势格局,持股观望



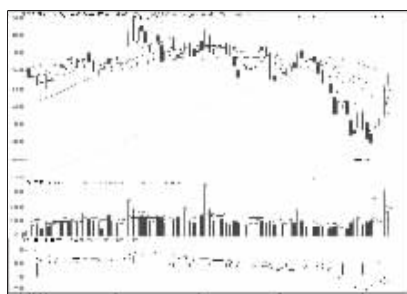
国信证券 (002736):抛压较重,不宜追涨



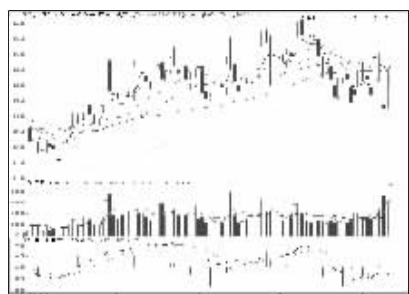
农业银行 (601288):拉升后盘整,持股观望



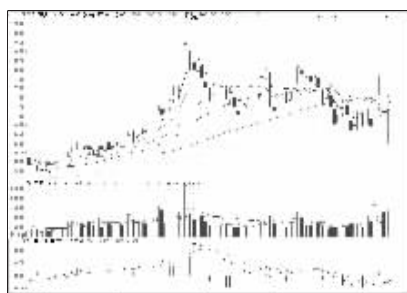
美的集团 (000333):走势偏强,持股为宜



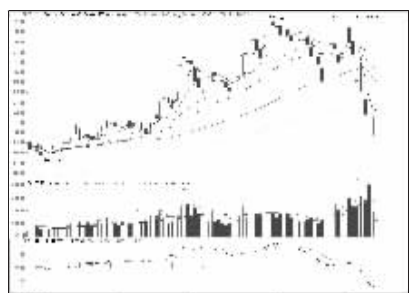
中国人寿 (601628):逼近压力区,观望



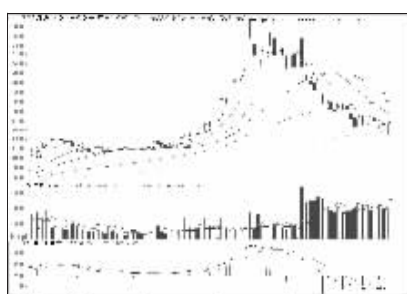
万科A (000002):强势震荡,持股为主



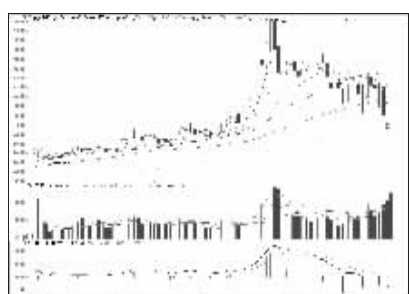
中国石化 (600028):横盘震荡,持股观望



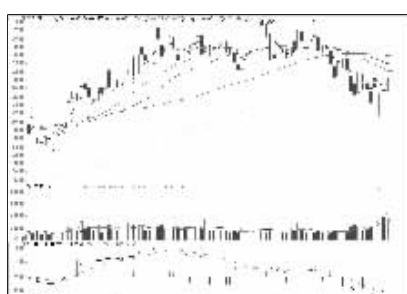
格力电器 (000651):反弹有力,看高一线



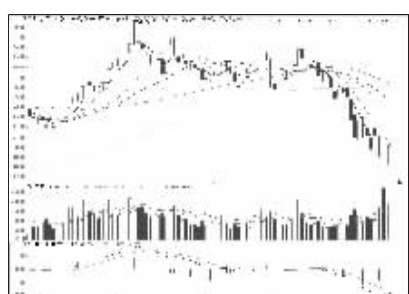
中国中车 (601766):超跌反弹,看高一线



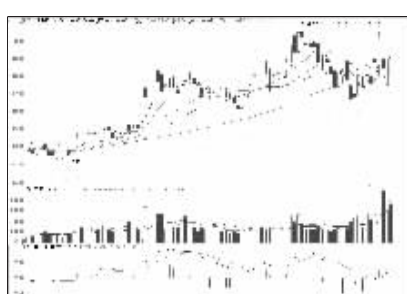
海康威视 (002415):停牌



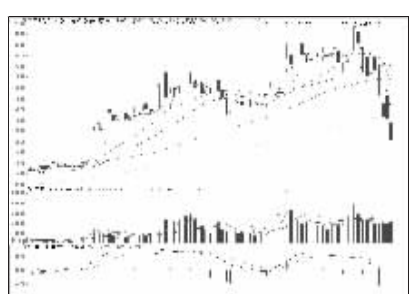
中国平安 (601318):均线压制,短线观望



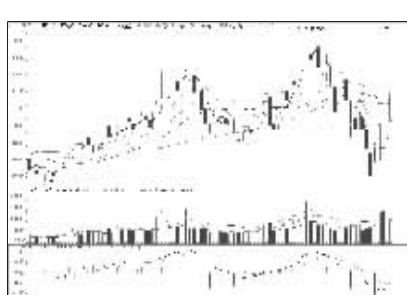
广发证券 (000776):上方压力重,逢高减仓



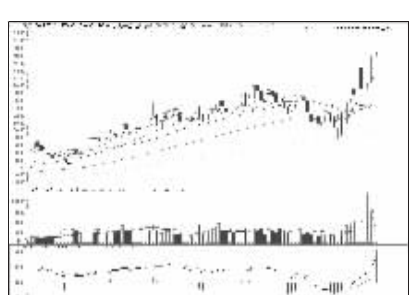
招商银行 (600036):强势震荡,观望为主



京东方A (000725):停牌



中国神华 (601088):攻势趋弱,不宜追涨



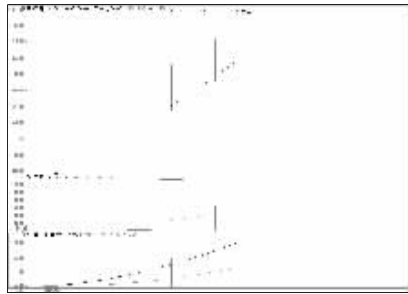
上海莱士 (002252):涨幅可观,谨慎持股

周涨跌幅前10

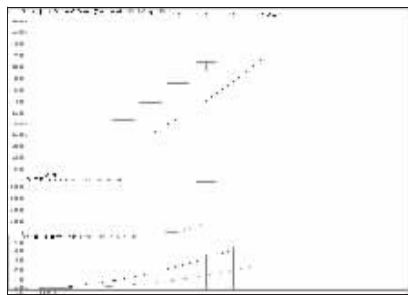
涨幅前10



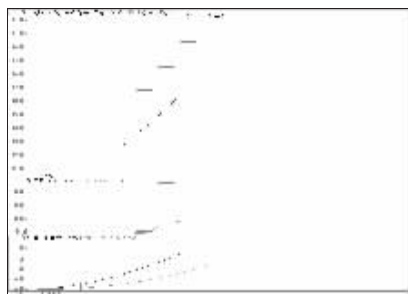
光力科技 (600480):新股惜售,持股观望



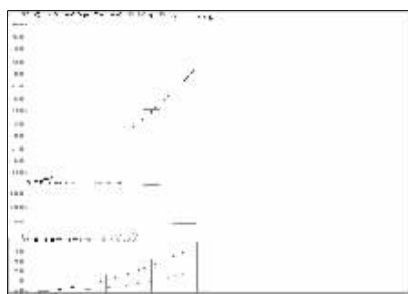
蓝晓科技 (600487):重现一字板,谨慎持股



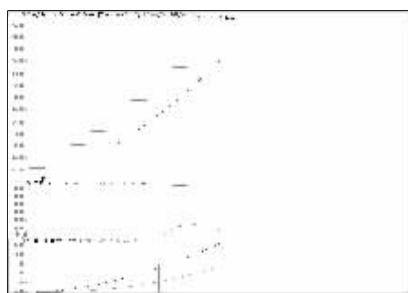
万孚生物 (600482):重现一字板,谨慎持股



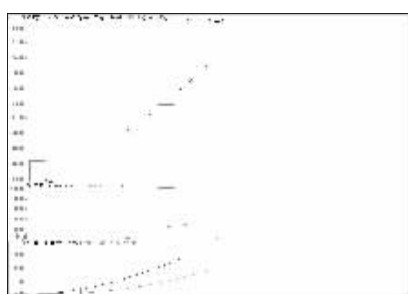
天成自控 (603085):重现一字板,谨慎持股



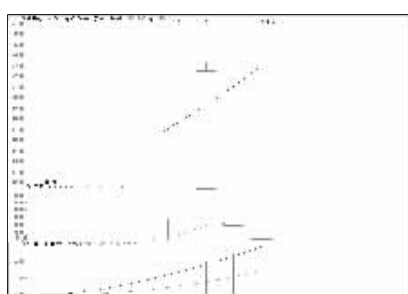
中飞股份 (600489):重现一字板,谨慎持股



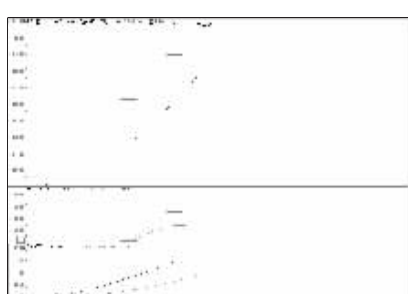
真视通 (002771):涨幅可观,逐步兑现



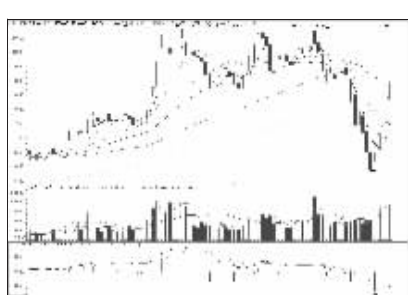
沃施股份 (600483):重现一字板,谨慎持股



濮阳惠成 (600481):一字涨停,谨慎持股

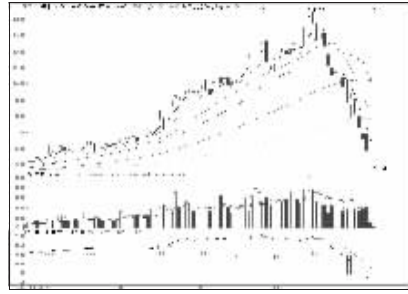


四通股份 (603838):压力渐增,逐步兑现

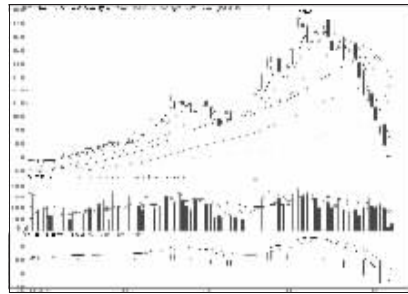


上港集团 (600018):逼近压力区,逢高减仓

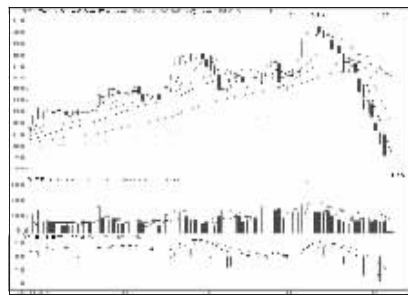
跌幅前10



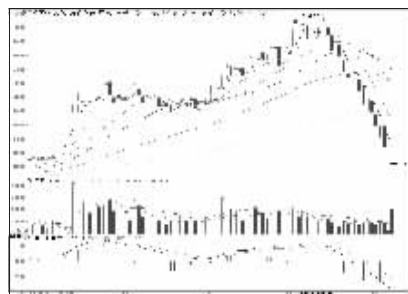
国风塑业 (000859):停牌



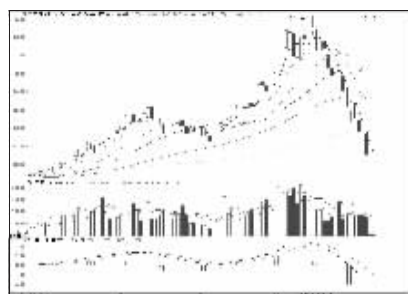
三木集团 (600632):停牌



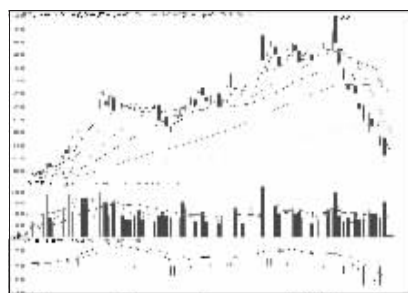
株冶集团 (600961):停牌



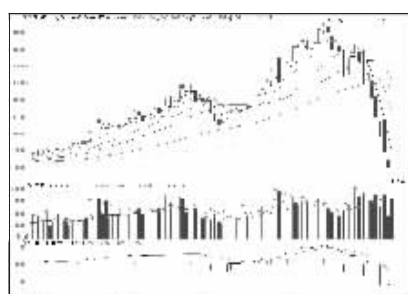
法因数控 (002270):停牌



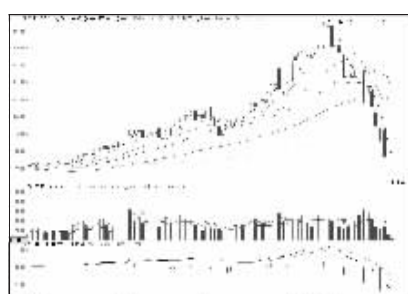
大洲兴业 (600603):停牌



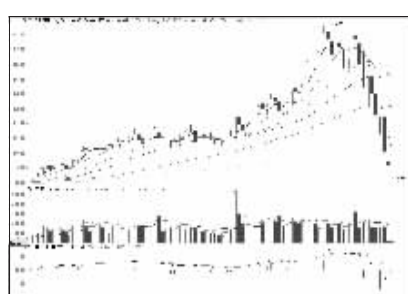
开元仪器 (600338):停牌



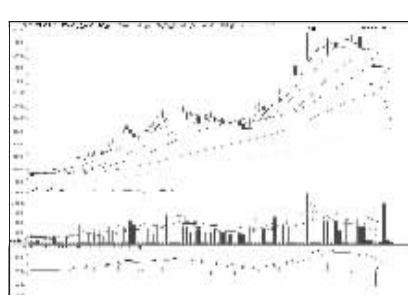
张家界 (000430):停牌



铜峰电子 (600237):停牌



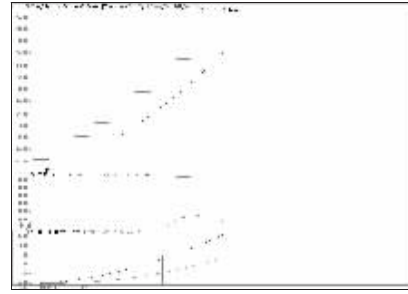
华东科技 (000727):停牌



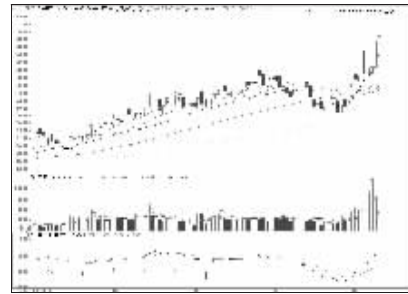
蓝星新材 (600299):停牌

连续涨跌前10

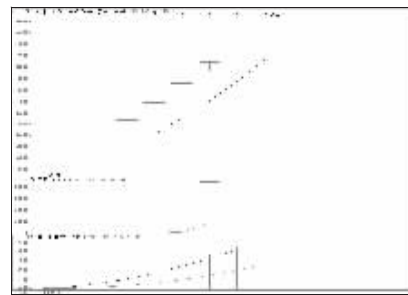
连涨前10



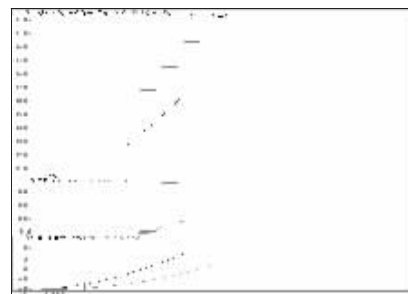
真视通 (002771):涨幅可观,逐步兑现



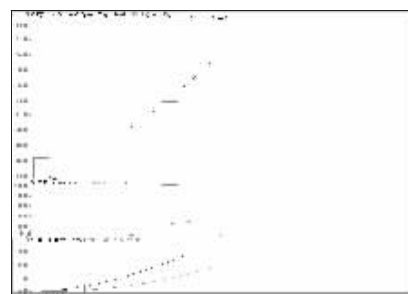
上海莱士 (002252):涨幅可观,谨慎持股



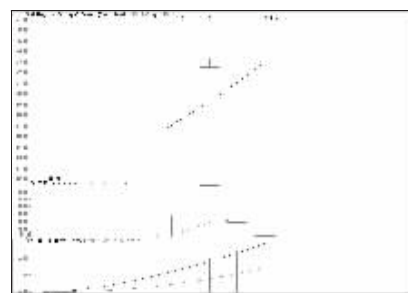
万孚生物 (600482):重现一字板,谨慎持股



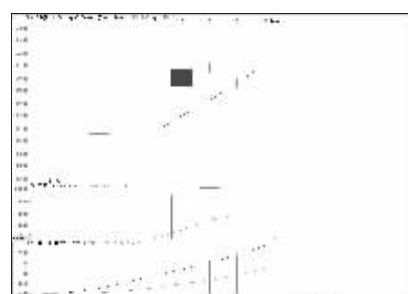
天成自控 (603085):重现一字板,谨慎持股



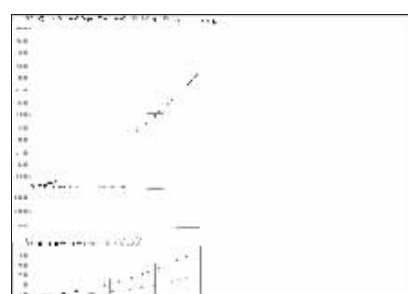
沃施股份 (600483):重现一字板,谨慎持股



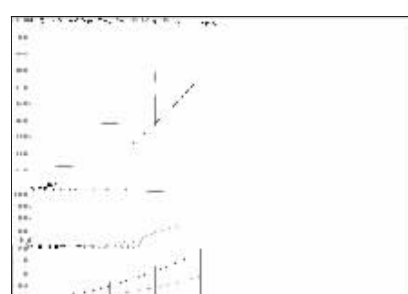
濮阳惠成 (600481):一字涨停,谨慎持股



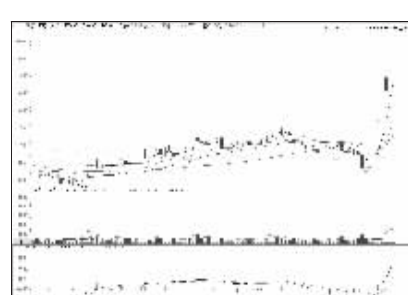
东杰智能 (600486):适当调整盈利预期



中飞股份 (600489):重现一字板,谨慎持股

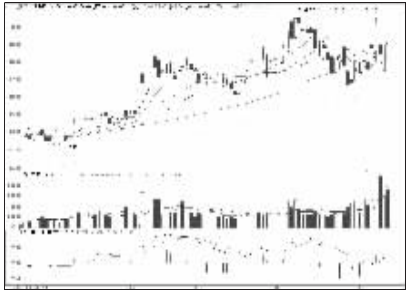


四通股份 (603838):压力渐增,逐步兑现

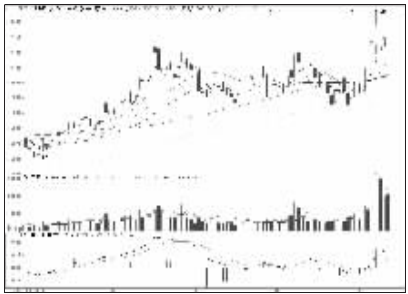


齐星铁塔 (002359):适当调整盈利预期

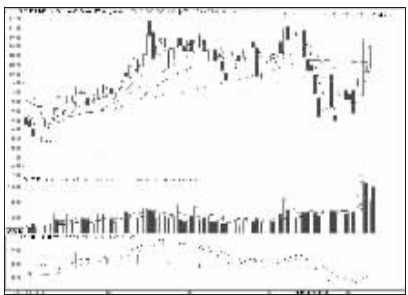
连跌前10



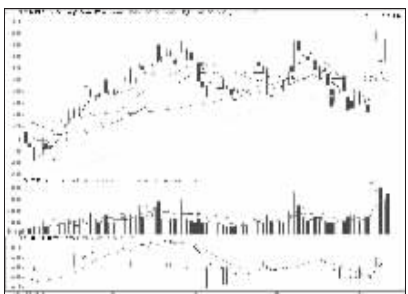
招商银行 (600036):强势震荡,观望为主



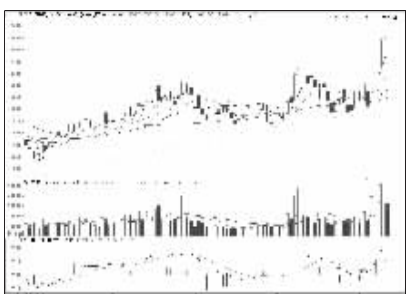
工商银行 (601398):高位震荡,观望为宜



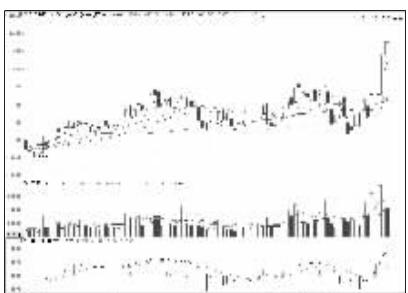
民生银行 (600016):强势震荡,观望为主



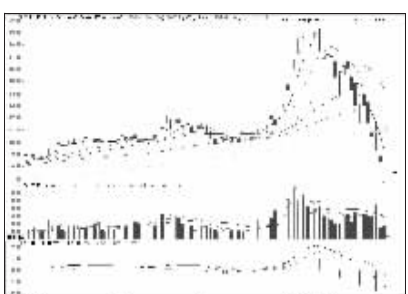
农业银行 (601288):拉升后盘整,持股观望



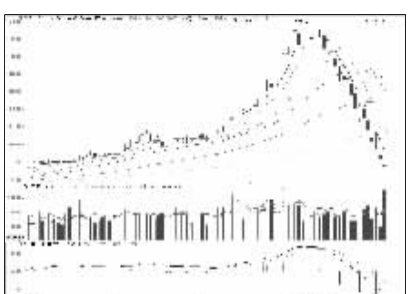
中国银行 (601988):强势格局,持股观望



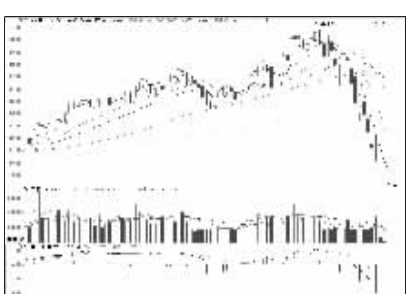
中信银行 (601998):攻势趋弱,观望为宜



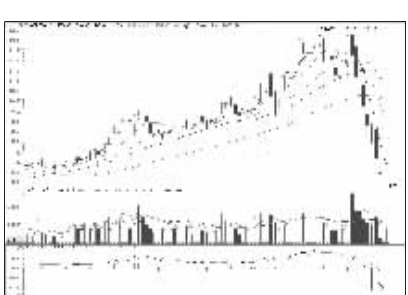
广州发展 (600098):强力反弹,仍有后劲



红豆股份 (600400):强力反弹,仍有后劲



香溢融通 (600830):强力反弹,仍有后劲



太化股份 (600281):超跌反弹,持股为宜