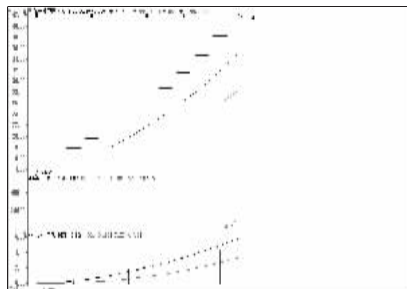


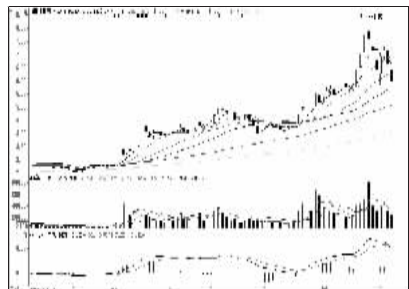
股东人数增减前10

股东人数减少前10



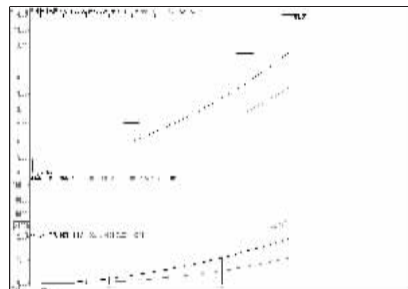
星微精密 (800464):高位放量,逐步兑现

股东人数增加前10



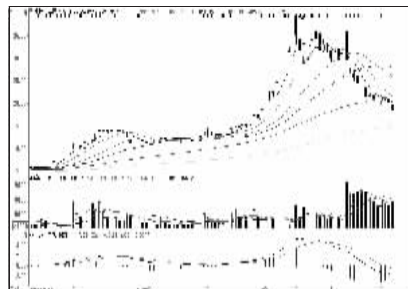
山鹰纸业 (600567):仍需整固,观望为主

资金流入金额前10



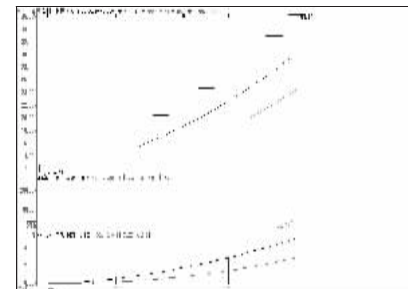
中国核电 (601985):压力增大,落袋为安

资金流出金额前10



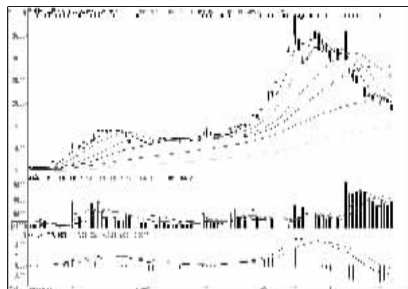
中国中车 (601766):尚未企稳,观望为主

成交突增前10

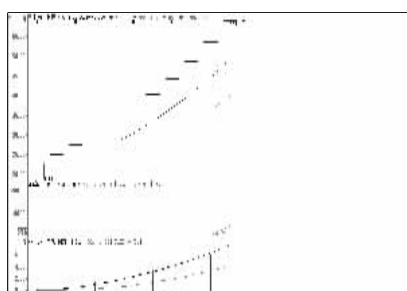


聚隆科技 (800475):震荡加大,落袋为安

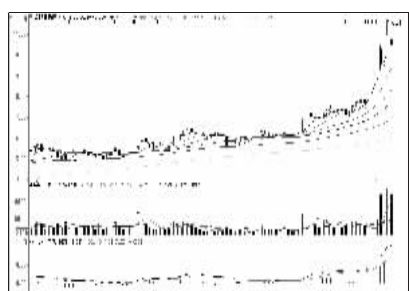
成交金额前8



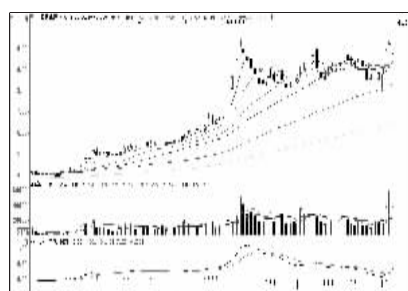
中国中车 (601766):尚未企稳,观望为主



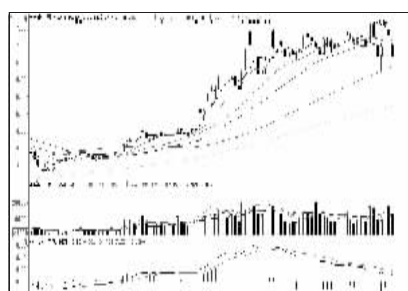
胜宏科技 (800476):震荡加大,落袋为安



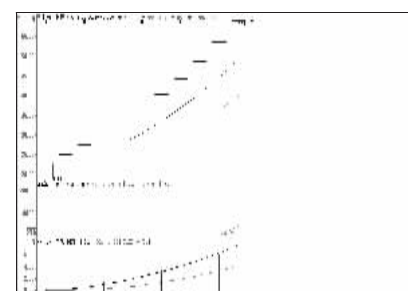
岳阳林纸 (600963):买盘不济,减仓观望



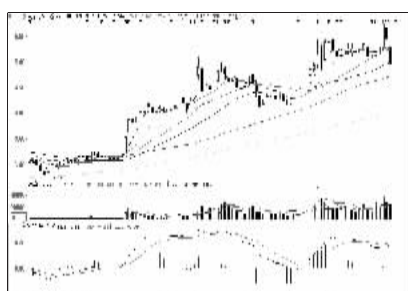
上海石化 (600688):强势格局,持股为主



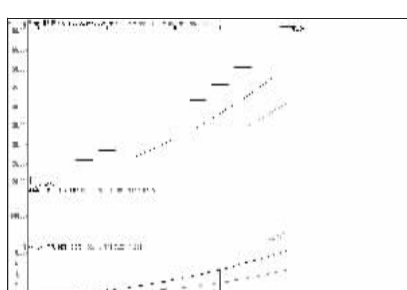
国电电力 (600795):60日线有支撑,持股



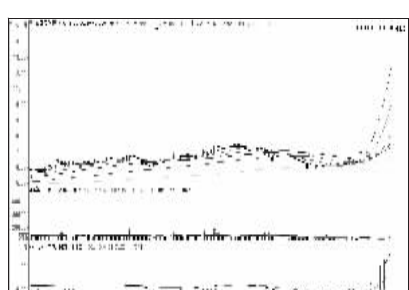
胜宏科技 (800476):震荡加大,落袋为安



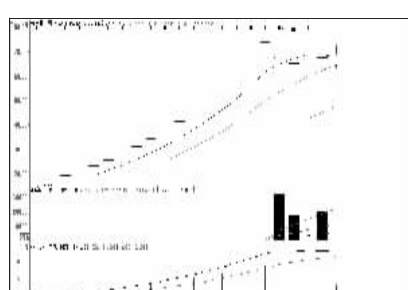
京东方A (000725):中期形态尚好,持股



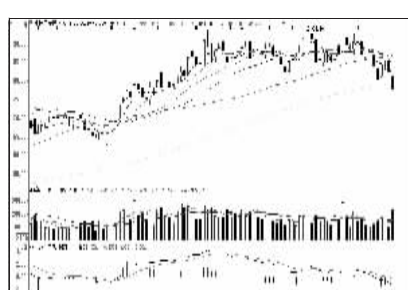
杭州高新 (800478):震荡加大,落袋为安



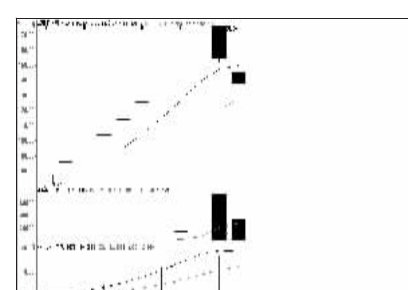
金鹰股份 (600232):谨防回调,适当止盈



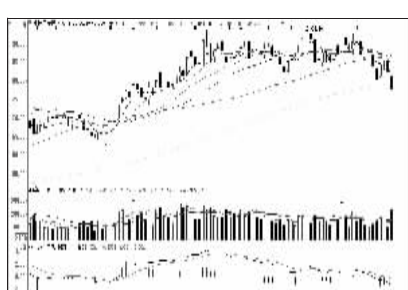
吉祥航空 (603885):强于大盘,持股观望



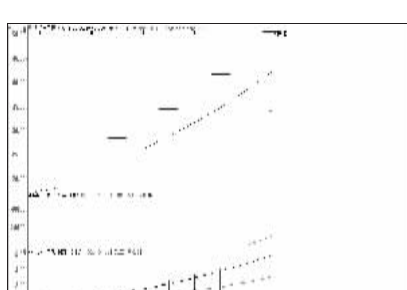
中国平安 (601318):均线向下,短线回避



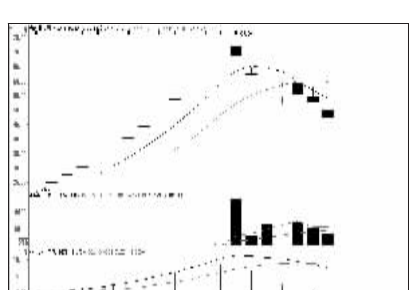
厚普股份 (800471):仍有调整压力,回避



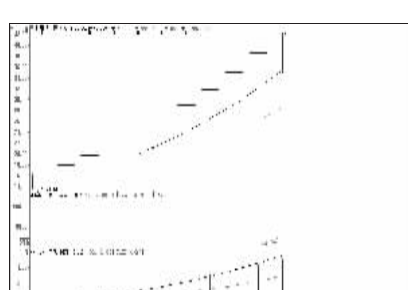
中国平安 (601318):均线向下,短线回避



先锋电子 (602767):新股放量,逐步兑现



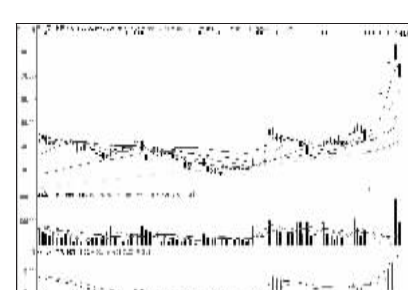
永创智能 (603901):弱势格局,回避



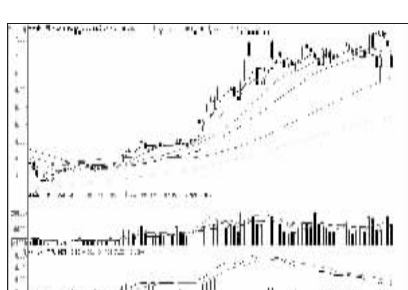
韩建河山 (603616):震荡加大,落袋为安



中信证券 (600030):形态趋弱,观望为主



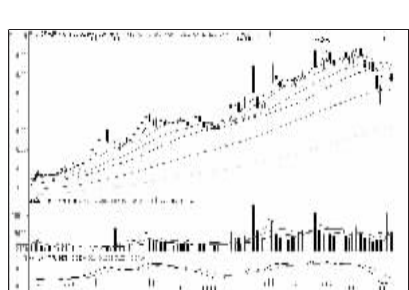
明家科技 (800242):仍有下跌空间,回避



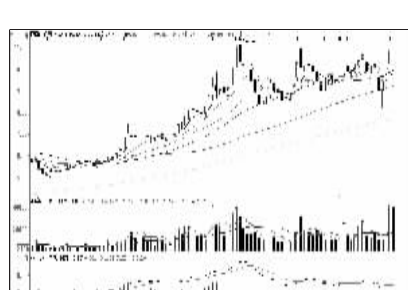
国电电力 (600795):60日线有支撑,持股



日机密封 (800470):震荡加大,落袋为安



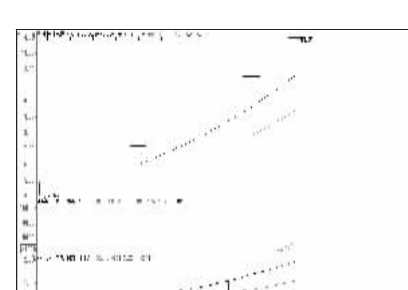
华锐风电 (601558):走弱迹象,减仓观望



招商轮船 (601872):整理格局,持股为主



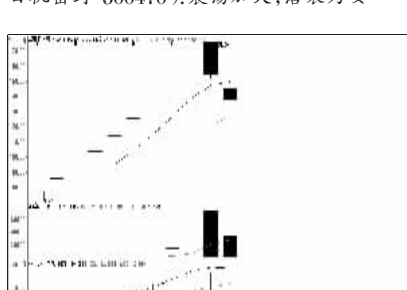
兴业银行 (601166):形态变差,减仓观望



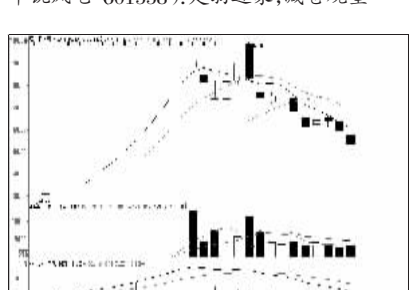
中国核电 (601985):压力增大,落袋为安



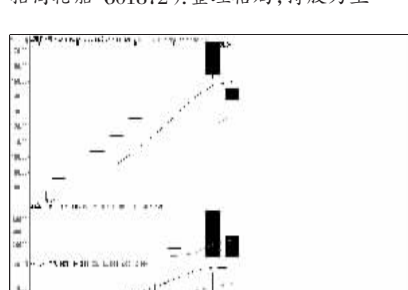
中信证券 (600030):形态趋弱,观望为主



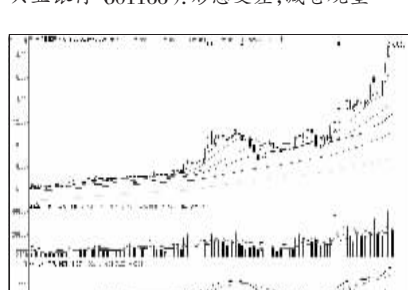
厚普股份 (800471):仍有调整压力,回避



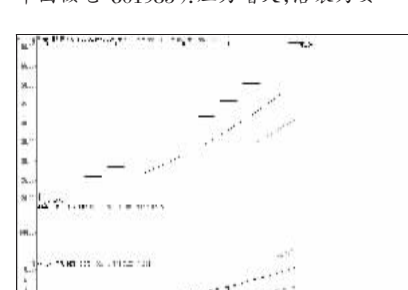
醋化股份 (603968):调整走势,观望为主



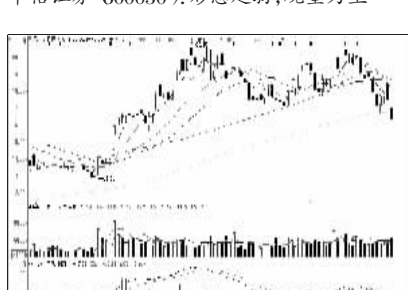
厚普股份 (800471):仍有调整压力,回避



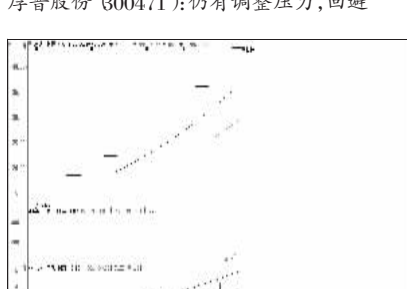
国投新集 (601918):高位回调,减仓观望



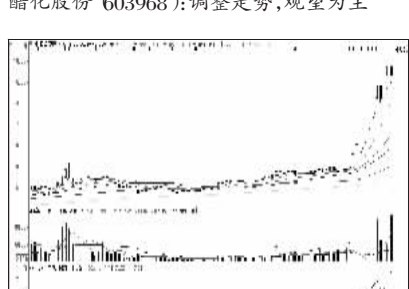
杭州高新 (800478):震荡加大,落袋为安



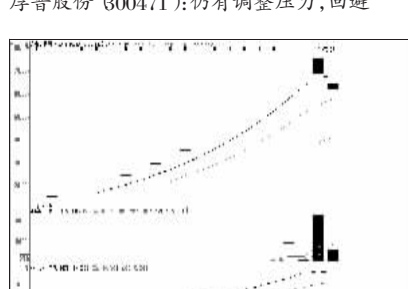
兴业银行 (601166):形态变差,减仓观望



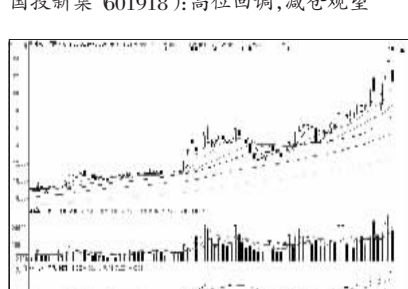
合纵科技 (800477):高位放量,逐步兑现



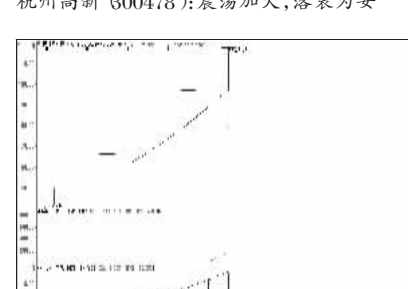
中海海盛 (600896):强势格局,持股为主



金桥信息 (603918):仍有调整压力,回避



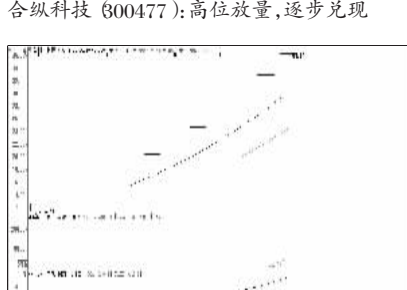
中粮屯河 (600737):获利盘较大,谨慎持股



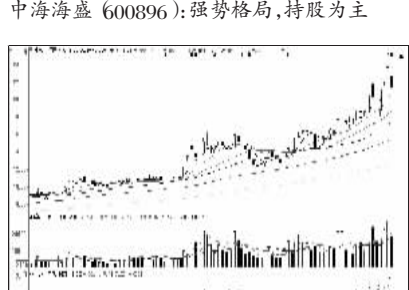
日机密封 (800470):震荡加大,落袋为安



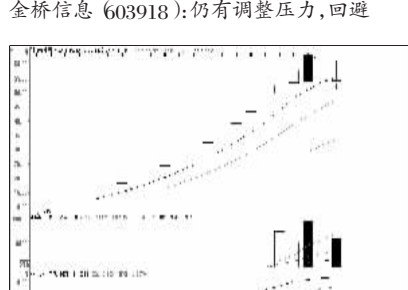
民生银行 (600016):向下空间有限,持股



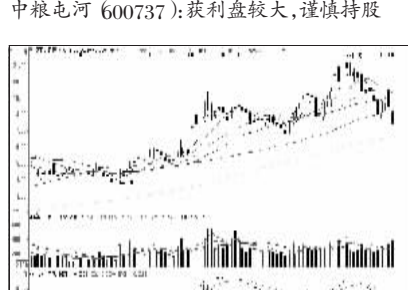
聚隆科技 (800475):震荡加大,落袋为安



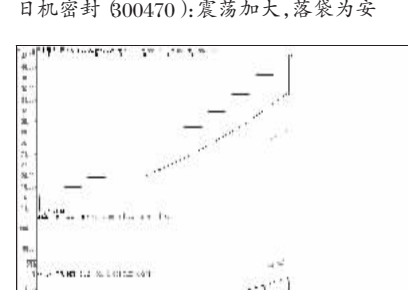
中粮屯河 (600737):获利盘较大,谨慎持股



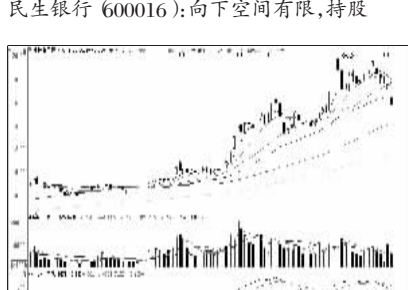
引力传媒 (603598):强于大势,谨慎持有



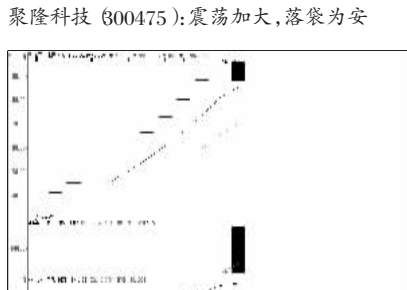
招商银行 (600036):半年线支撑较强



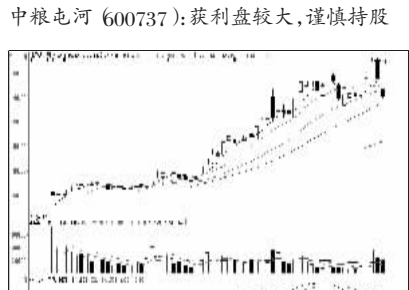
韩建河山 (603616):震荡加大,落袋为安



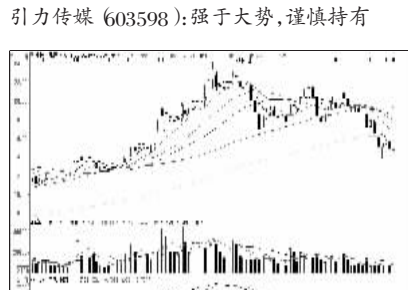
中国重工 (601989):短线趋弱,逢高离场



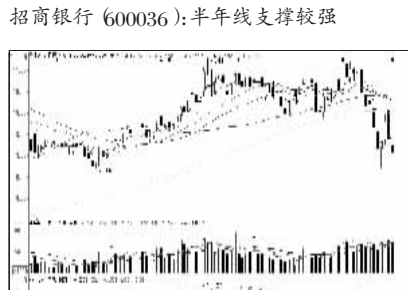
金发拉比 (602762):放量下跌,兑现离场



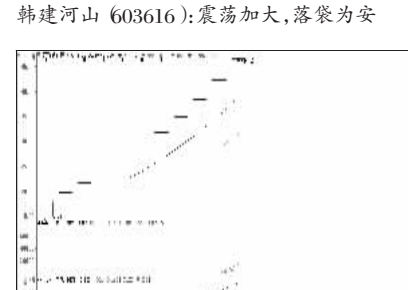
浙江鼎力 (603338):出货迹象,离场为宜



中国交建 (601800):买气增加,持股为主



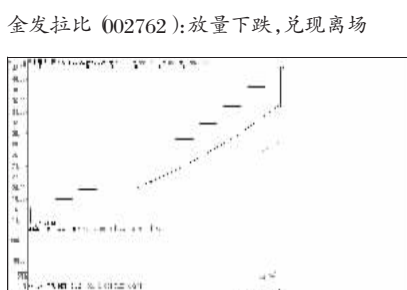
民生银行 (600016):向下空间有限,持股



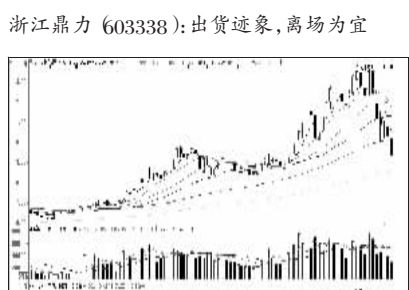
音飞储存 (603066):高位放量,逐步兑现



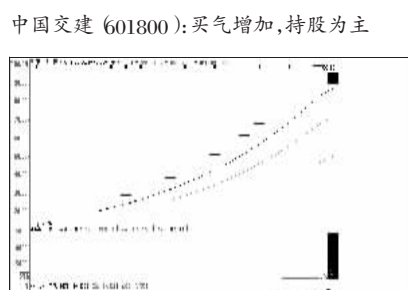
汇洁股份 (002763):高位放量跌停,回避



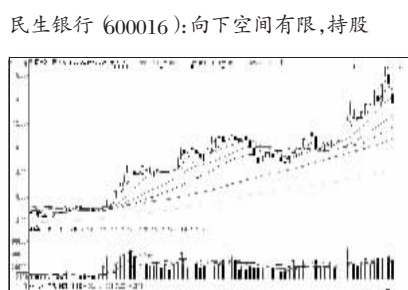
韩建河山 (603616):震荡加大,落袋为安



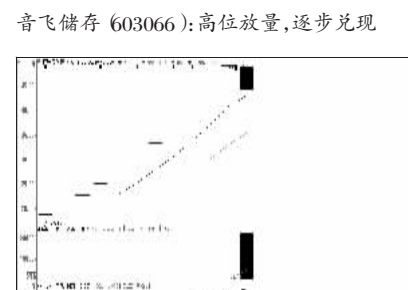
北京利尔 (002392):有望止跌,持有为主



高伟达 (800465):高量下跌,出局观望



南方航空 (600029):高位回调,短线回避



汇洁股份 (002763):高位放量跌停,回避

