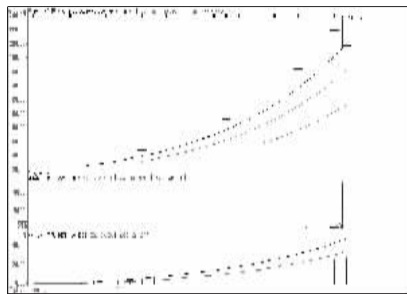


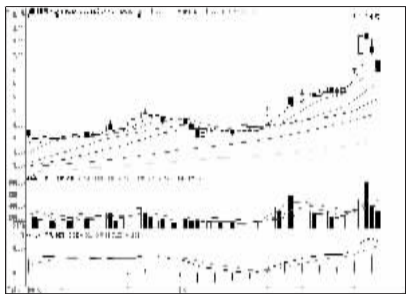
股东人数增减前10

股东人数减少前10



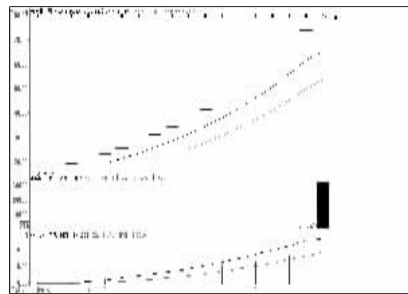
创业软件 (800451):高位放量,谨防调整

股东人数增加前10



山鹰纸业 (600567):强势股回调,谨慎

资金流入金额前10



吉祥航空 (603885):涨幅较大,落袋为安

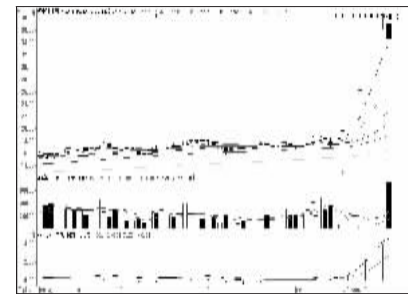
资金流出金额前10



中国银行 (601988):缩量下跌,关注均线支撑

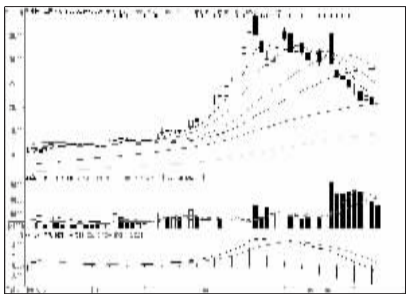
周成交金额

成交突增前10

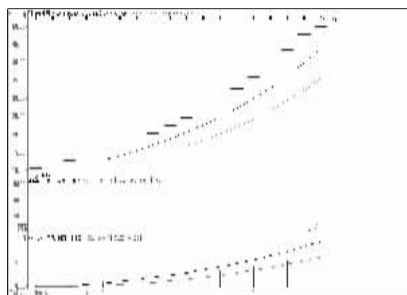


华宏科技 (002645):高位回调,落袋为安

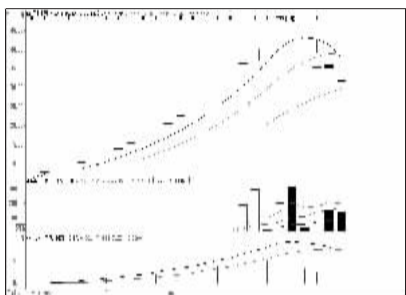
成交金额前8



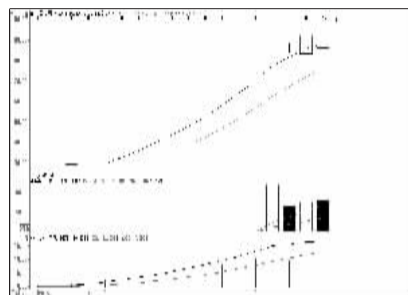
中国中车 (601766):调整充分,或将企稳



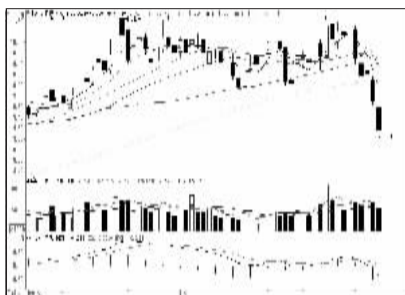
引力传媒 (603598):高位放量,落袋为安



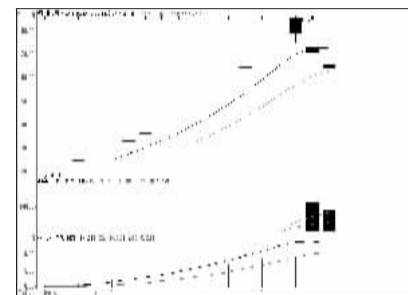
雪峰科技 (603227):次新股回调,离场



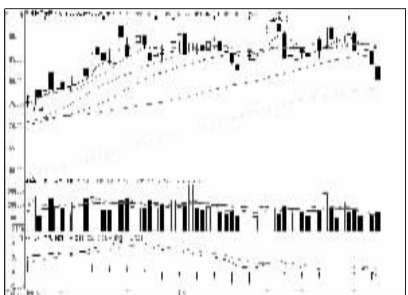
润达医疗 (603108):高位滞涨,谨慎为宜



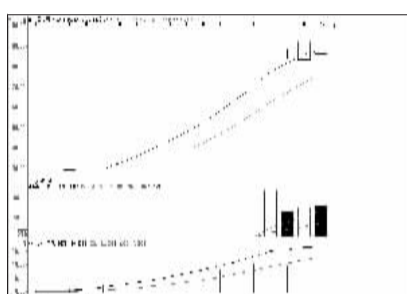
民生银行 (600016):破位下行,短期谨慎



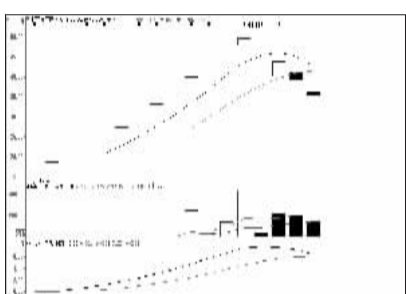
华铭智能 (800462):次新股回调,离场



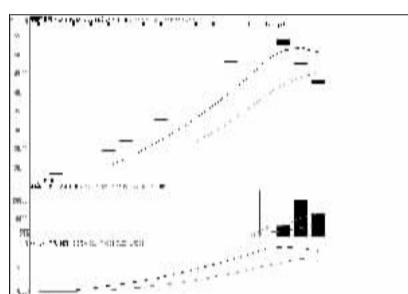
中国平安 (601318):关注下方均线支撑



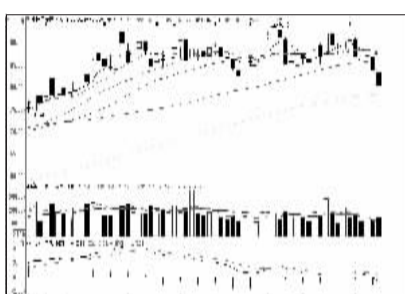
润达医疗 (603108):高位震荡,谨慎为妙



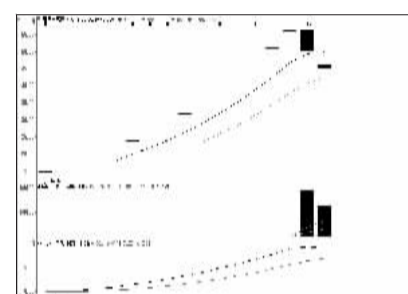
迎驾贡酒 (603198):次新股回调,离场



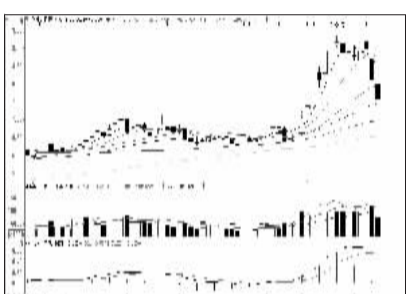
灵康药业 (603669):次新股回调,落袋为安



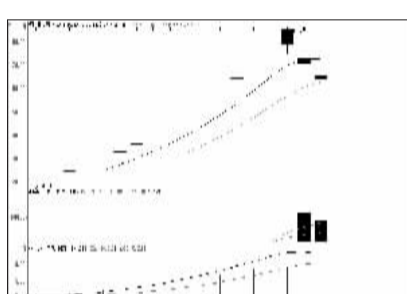
中国平安 (601318):关注下方均线支撑



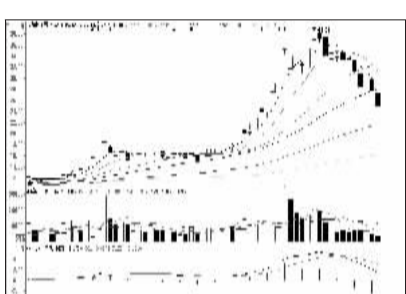
赛摩电气 (800466):次新股回调,落袋为安



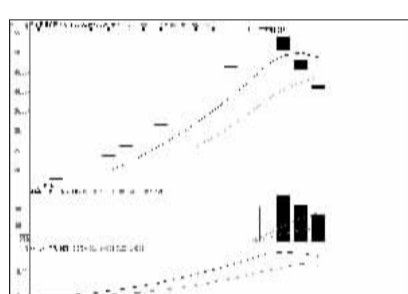
交通银行 (601328):回调充分,短期观望



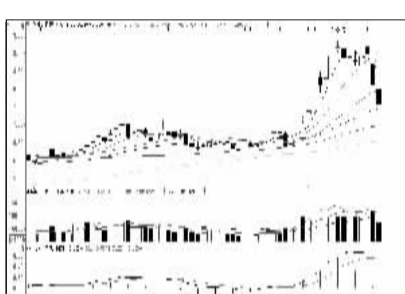
华铭智能 (800462):次新股回调,落袋为安



东方电缆 (603606):强势股回调,谨慎



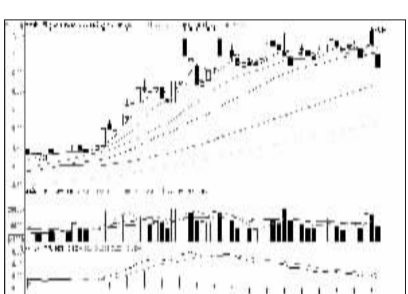
伟明环保 (603568):次新股回调,落袋为安



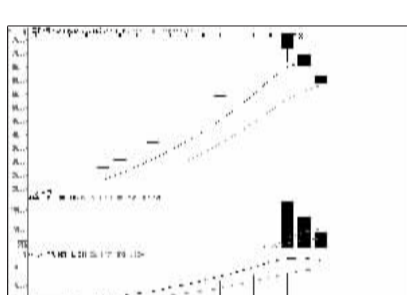
交通银行 (601328):回调充分,短期观望



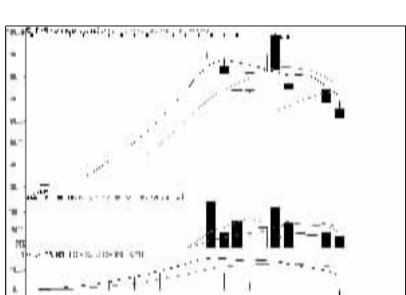
海南瑞泽 (002596):冲高回落,谨慎为宜



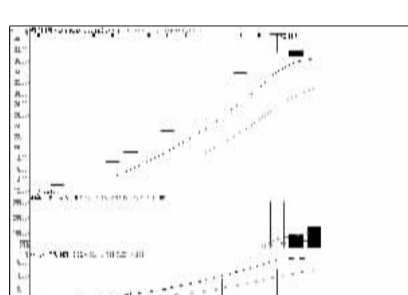
国电电力 (600795):跌至平台下沿,谨慎



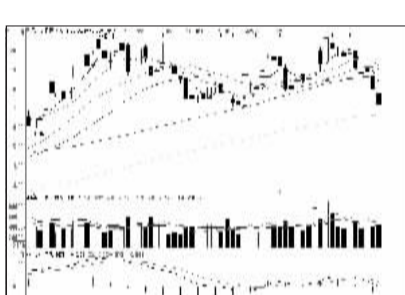
威帝股份 (603023):次新股回调,落袋为安



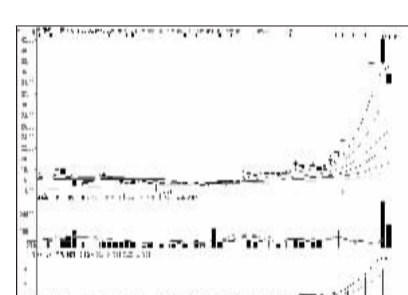
酷化股份 (603968):调整充分,或将企稳



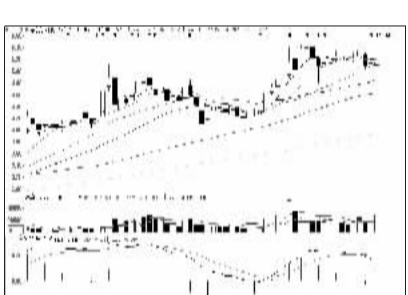
华铁科技 (603300):次新股回调,落袋为安



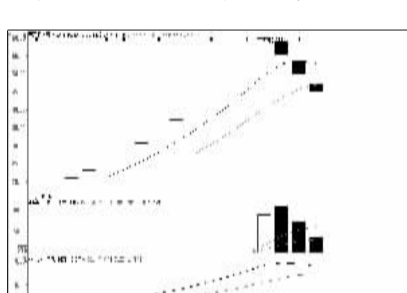
兴业银行 (601166):关注均线支撑



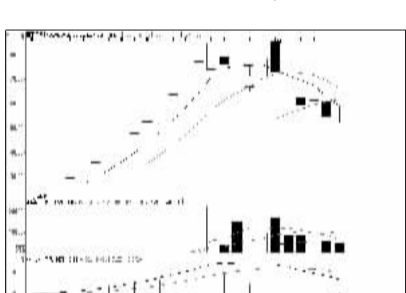
高新兴 (800098):谨慎看好,低位介入



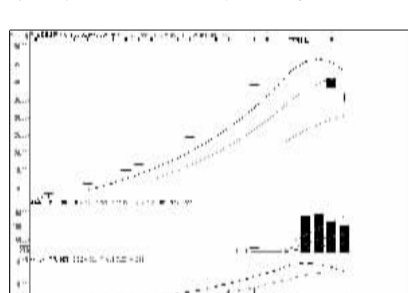
京东方A (000725):横盘震荡,表现抗跌



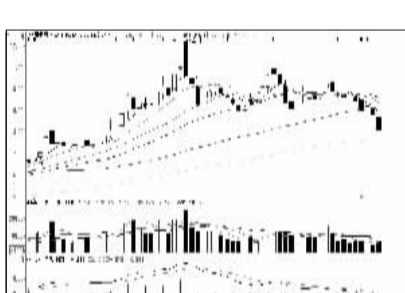
天际股份 (002759):次新股回调,落袋为安



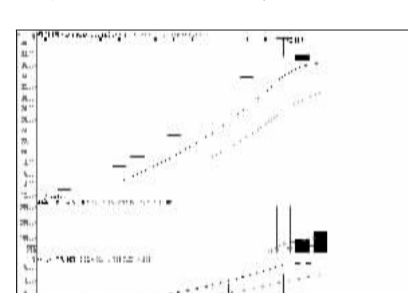
普莱柯 (603566):调整充分,或将企稳



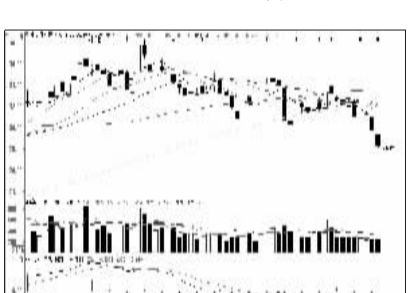
金海环境 (603311):次新股回调,落袋为安



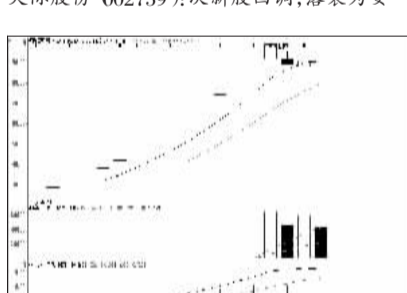
中国建筑 (601668):关注下方均线支撑



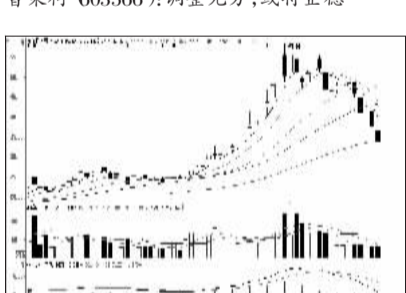
华铁科技 (603300):次新股回调,落袋为安



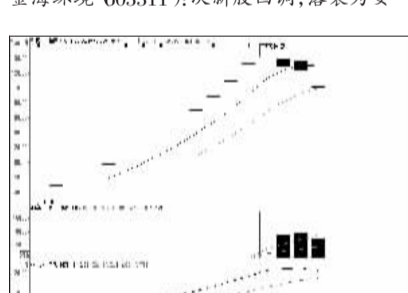
中信证券 (600030):调整充分,低位介入



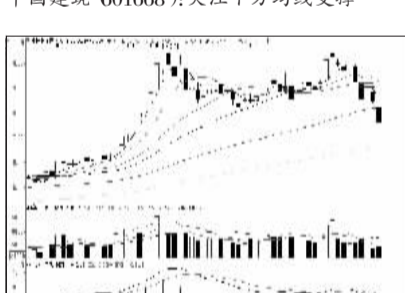
华通医药 (002758):次新股回调,落袋为安



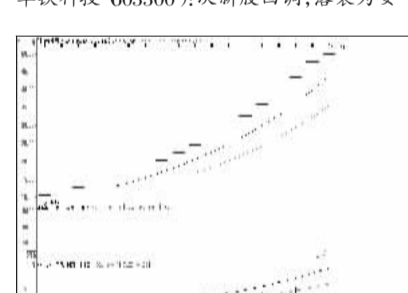
诺力股份 (603611):强势股回调,谨慎



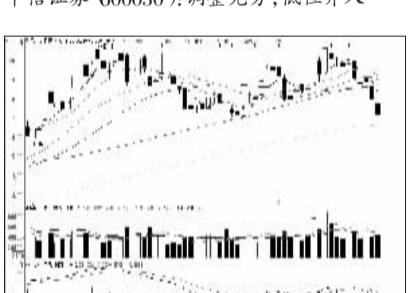
迈克生物 (800463):次新股回调,落袋为安



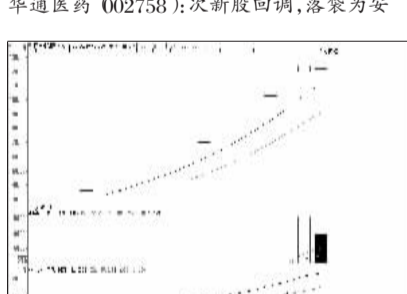
中国联通 (600050):连续下挫,及时止损



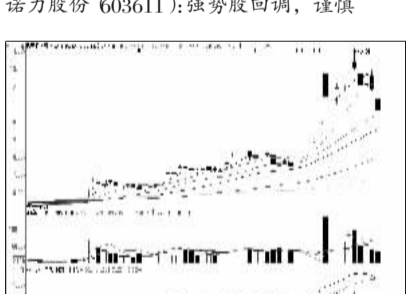
引力传媒 (603598):高位放量,落袋为安



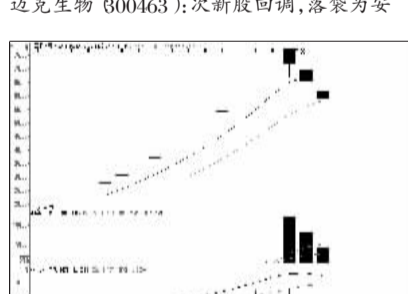
兴业银行 (601166):关注均线支撑



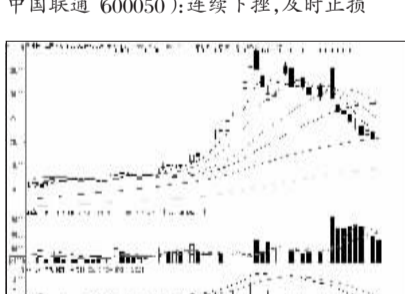
四方精创 (800468):高位滞涨,谨防调整



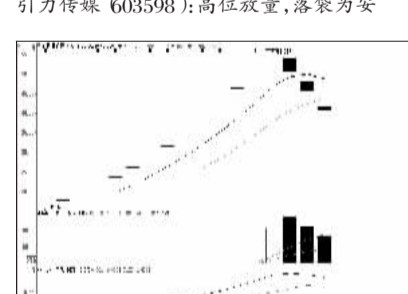
曙光股份 (600303):高位回调,谨慎为妙



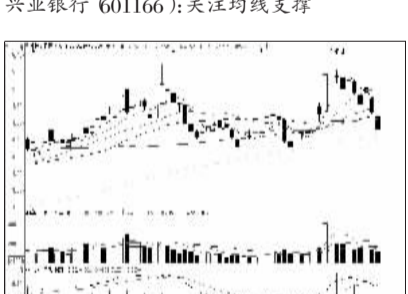
威帝股份 (603023):次新股回调,落袋为安



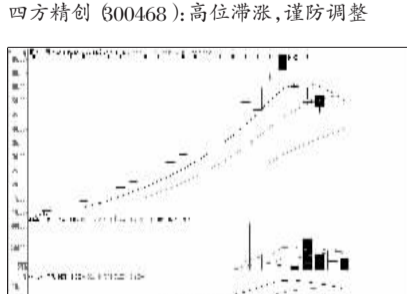
中国中车 (601766):调整充分,或将企稳



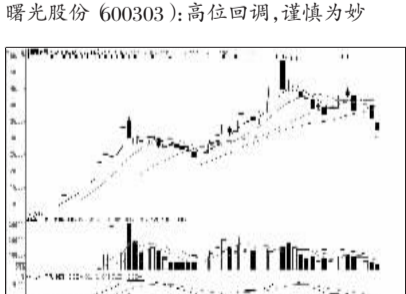
伟明环保 (603568):次新股回调,落袋为安



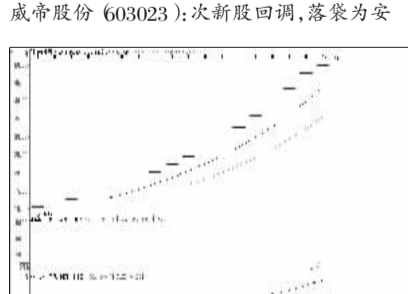
中国银行 (601988):缩量下跌,关注均线支撑



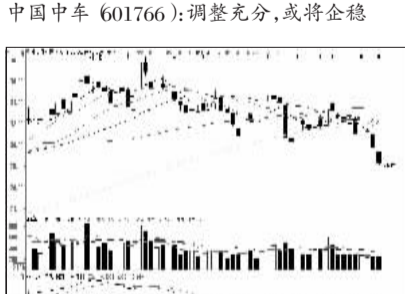
海利生物 (603718):次新股回调,落袋为安



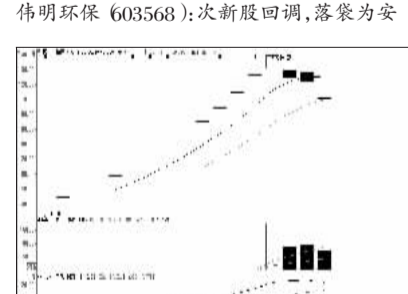
北部湾旅 (603869):次新股回调,谨慎



引力传媒 (603598):高位放量,落袋为安



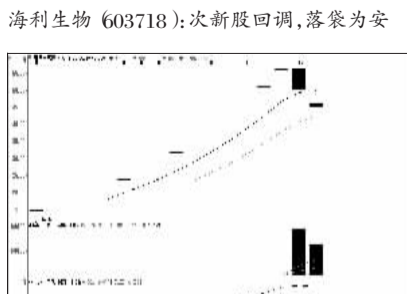
中信证券 (600030):调整充分,低位介入



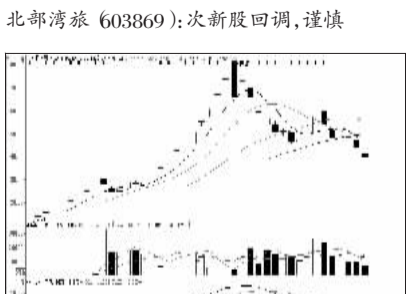
迈克生物 (800463):次新股回调,落袋为安



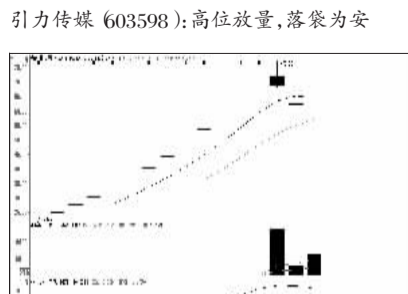
中国中车 (601766):调整充分,或将企稳



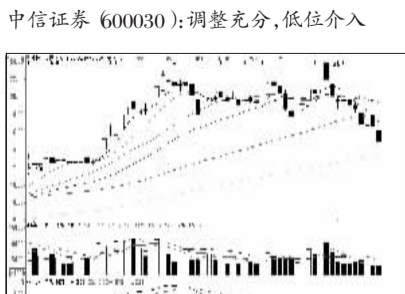
赛摩电气 (800466):次新股回调,落袋为安



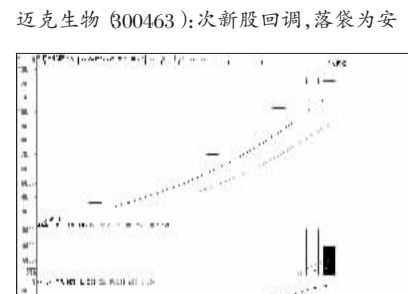
曲美股份 (603818):次新股调整,谨慎



永创智能 (603901):次新股回调,谨慎



中国中铁 (601390):关注下方均线支撑



四方精创 (800468):高位滞涨,谨防调整



看股票 买彩票
全搞定
大智慧手机版
d.wapgw.cn