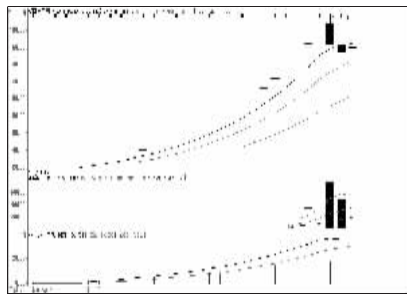


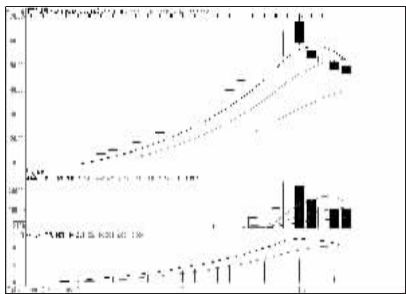
股东人数增减前10

股东人数减少前10

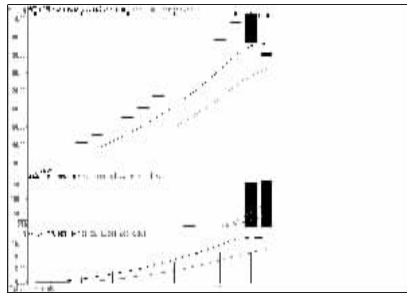


易尚展示 (002751):高位回调,观望为宜

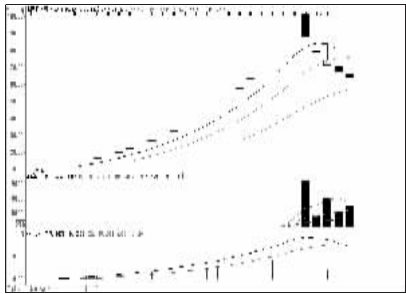
股东人数增加前10



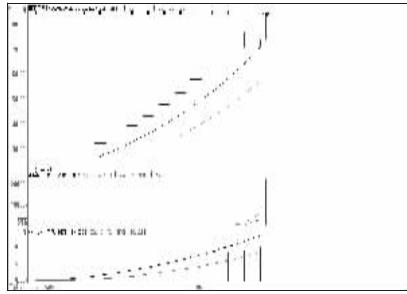
江苏有线 (600959):连续回调,暂时观望



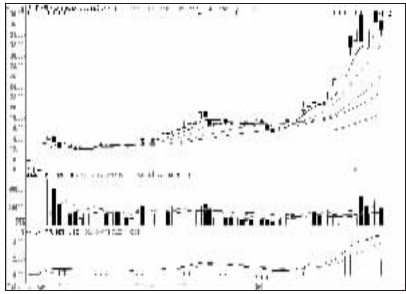
永兴特钢 (002756):高位回调,观望为宜



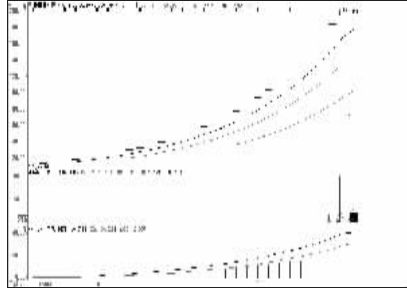
派思股份 (603318):逼近20日线,观望



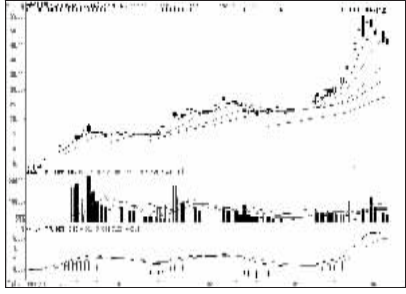
普莱柯 (603566):波动加剧,适当谨慎



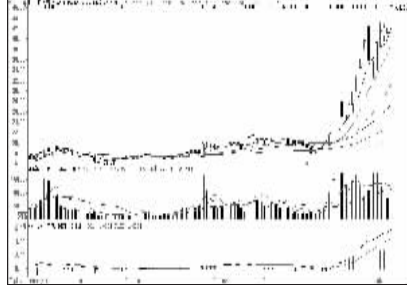
银龙股份 (603969):阶段涨幅大,止盈



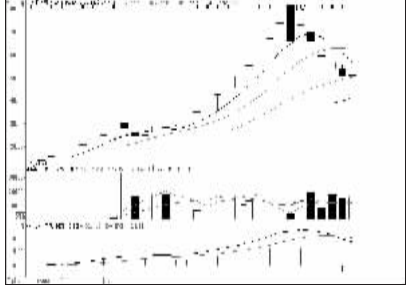
乐凯新材 (800446):高位回调,谨慎为宜



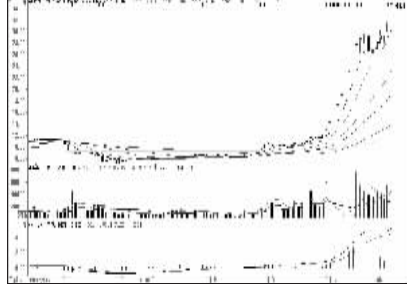
再升科技 (603601):高位回调,观望为主



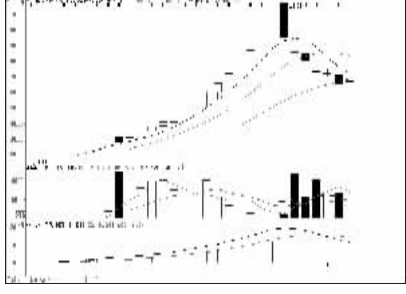
福达股份 (603166):涨幅已大,考虑止盈



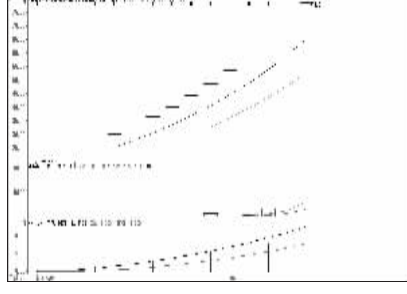
曲美股份 (603818):关注均线支撑



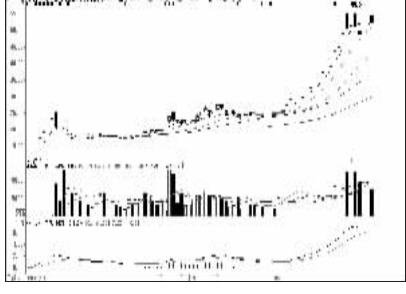
奥维通信 (002231):强势品种,持股观望



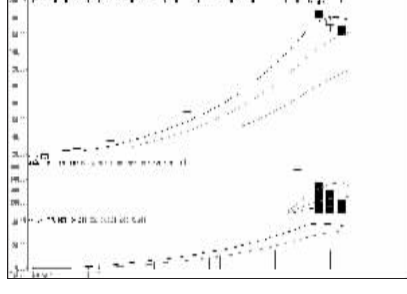
福鞍股份 (603315):回调充分,或将企稳



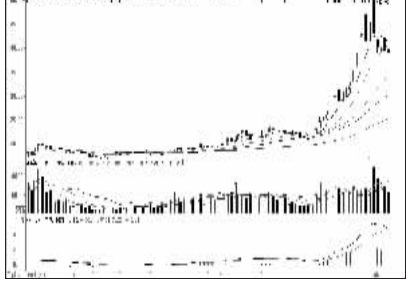
新通联 (603022):新股,持股观望



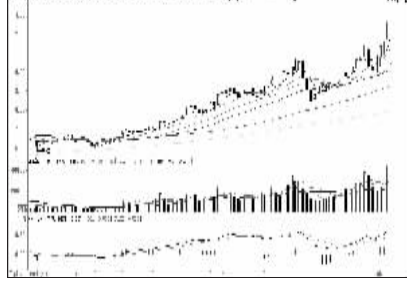
诺力股份 (603611):高位震荡,观望为宜



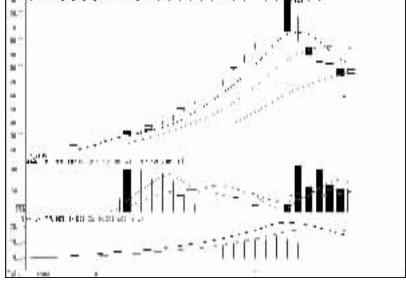
博济医药 (800404):高位回调,观望为主



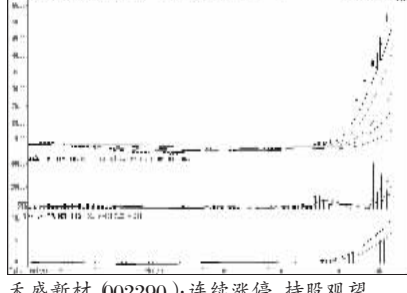
新澳股份 (603889):上升通道尚未被破坏



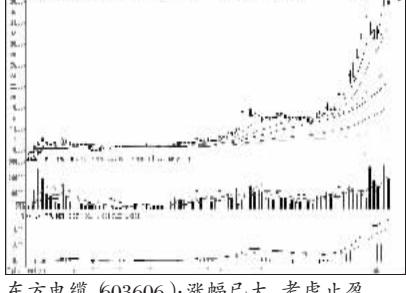
岷江水电 (600131):上涨加速,持有为宜



盛洋科技 (603703):均线支撑,或将企稳



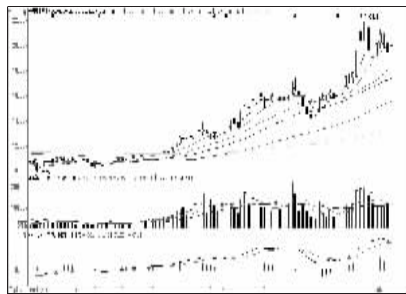
禾盛新材 (002290):连续涨停,持股观望



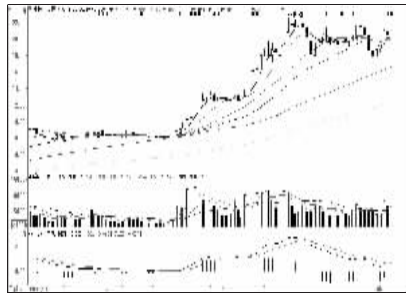
东方电缆 (603606):涨幅已大,考虑止盈

一周资金流入流出金额前10

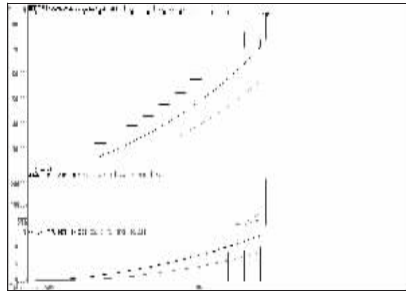
资金流入金额前10



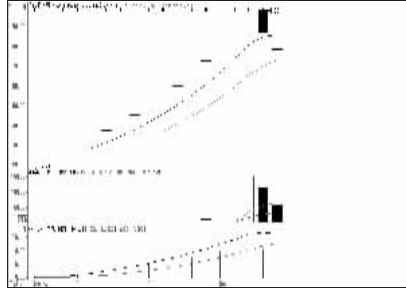
宝泰隆 (601011):高位震荡,持股观望



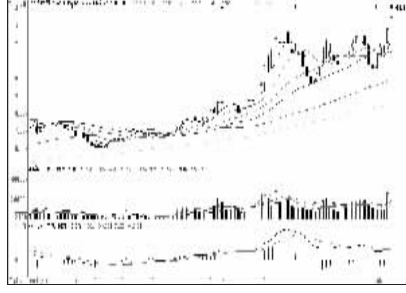
中国中铁 (601390):携量上行,或挑战前高



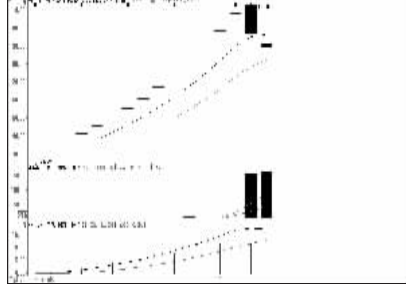
普莱柯 (603566):波动加剧,适当谨慎



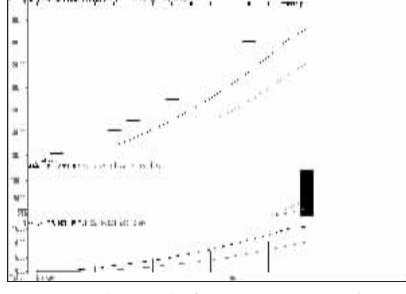
广信股份 (603599):冲高回落,谨慎为宜



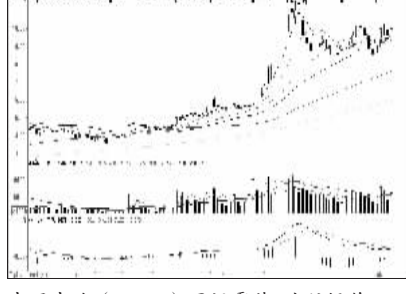
中国西电 (601179):加速上涨,持股观望



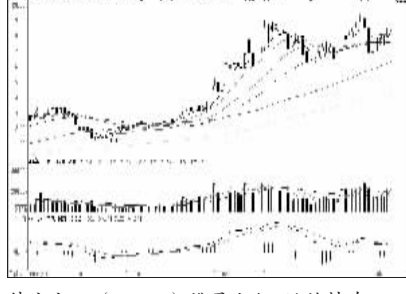
永兴特钢 (002756):高位回调,短线谨慎



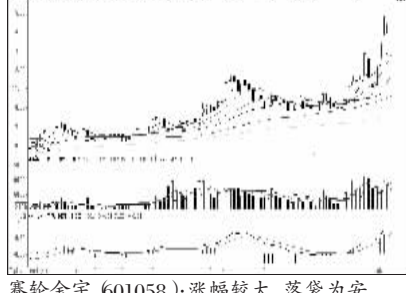
醋化股份 (603968):高位滞涨,短线谨慎



中国中冶 (601618):区间震荡,波段操作

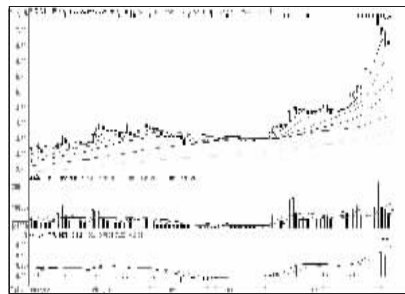


特变电工 (600089):携量上行,继续持有

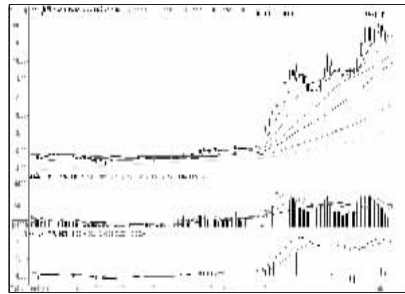


赛轮金宇 (601058):涨幅较大,落袋为安

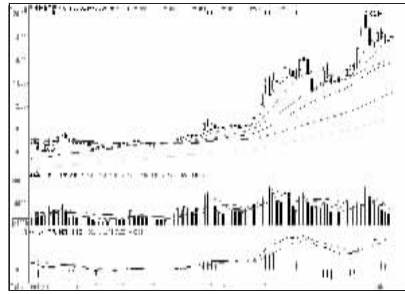
资金流出金额前10



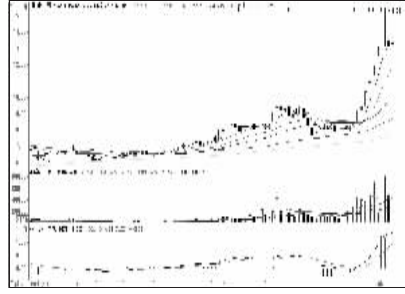
紫金矿业 (601899):高位震荡,持股观望



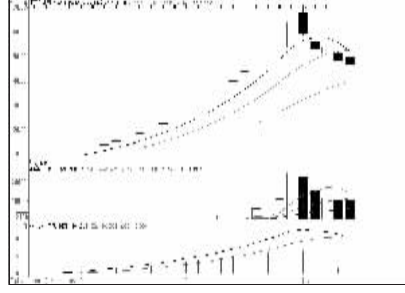
中国一重 (601106):高位震荡,持股观望



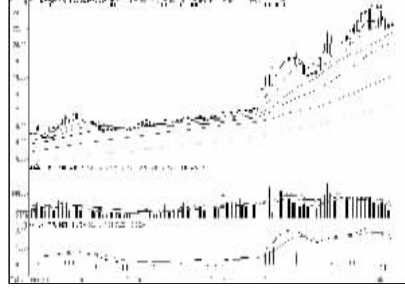
中国重工 (601989):高位震荡,持股观望



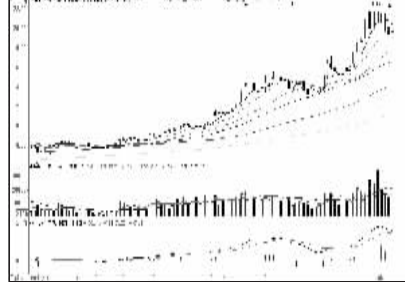
浙能电力 (600023):高位震荡,观望为主



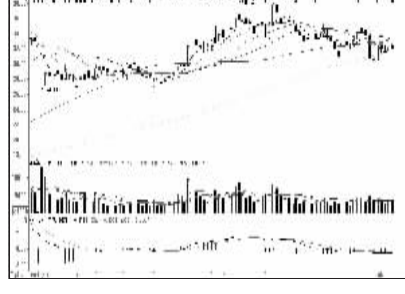
江苏有线 (600959):连续回调,暂时观望



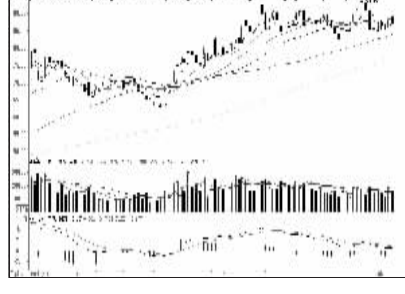
上海电气 (601727):上行趋势,尝试低吸



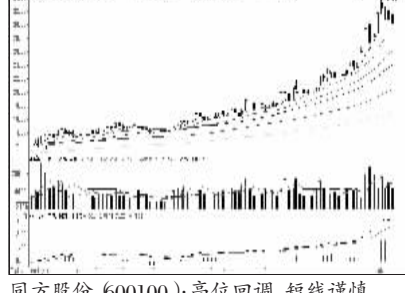
隧道股份 (600820):上行趋势,尝试低吸



中信证券 (600030):走势偏弱,观望为主



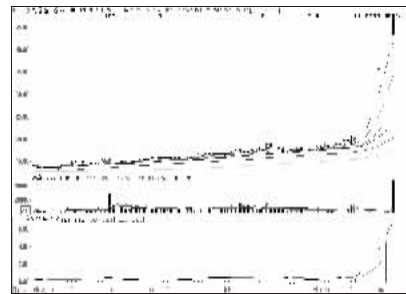
中国平安 (601318):走势偏弱,观望为主



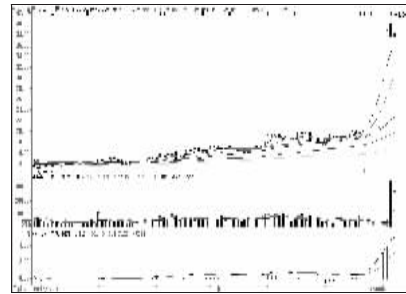
同方股份 (600100):高位回调,短线谨慎

周成交金额

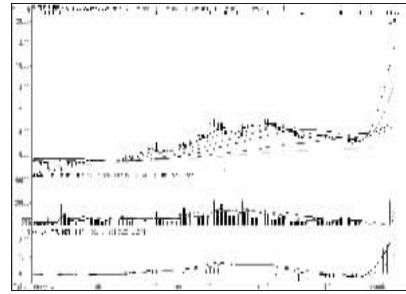
成交突增前10



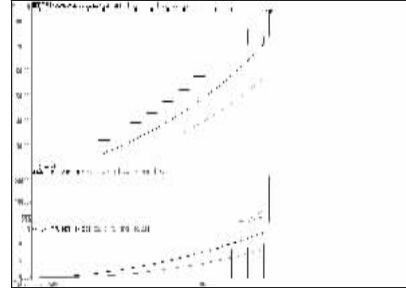
九芝堂 (000989):冲高回落,短线谨慎



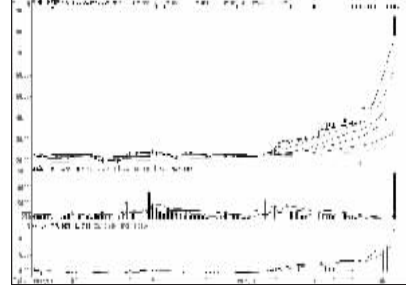
华星创业 (600025):高位滞涨,兑现获利



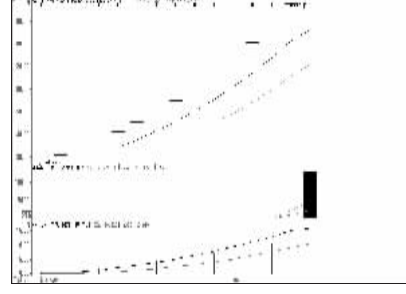
科斯伍德 (800192):高位放量,谨防回调



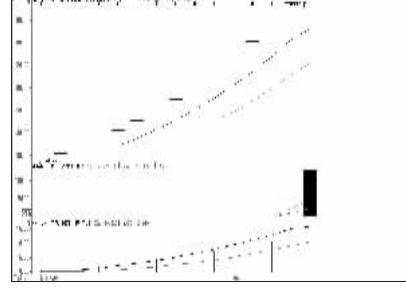
普莱柯 (603566):波动加剧,适当谨慎



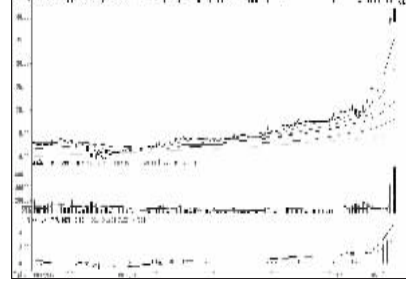
精华制药 (002349):冲高回落,落袋为安



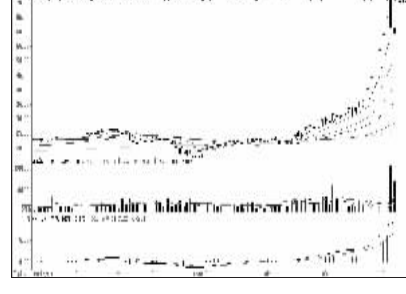
醋化股份 (603968):高位滞涨,短线谨慎



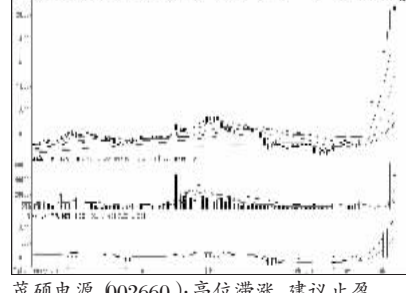
航天通信 (600677):冲高回落,落袋为安



中超电缆 (002471):高位放量,谨防续跌

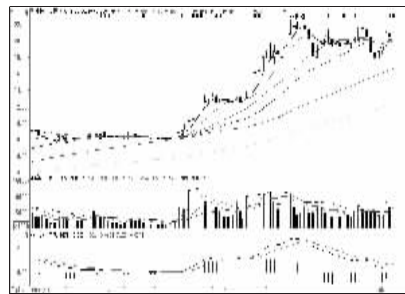


梅泰诺 (800038):高位回调,谨慎为主

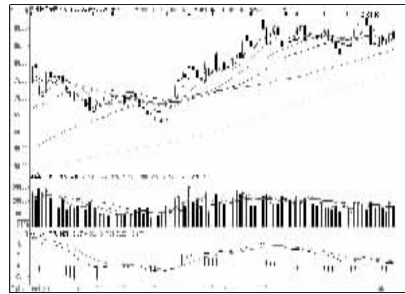


茂硕电源 (002660):高位滞涨,建议止盈

成交金额前8



中国中铁 (601390):携量上行,或挑战前高



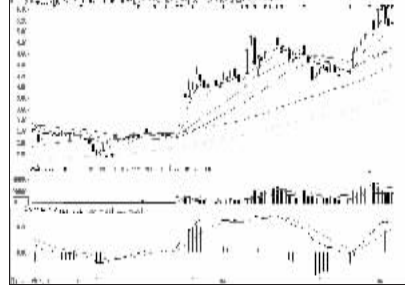
中国平安 (601318):走势偏弱,观望为主



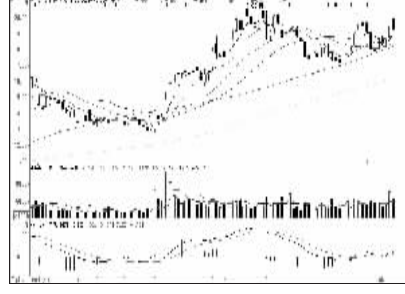
中国重工 (601989):高位震荡,持股观望



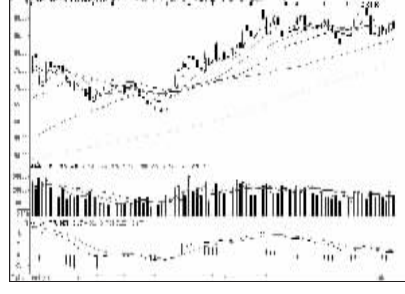
中信证券 (600030):走势偏弱,观望为主



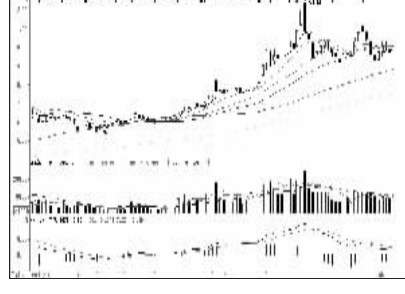
京东方A (000725):高位回调,看多后市



兴业银行 (601166):温和上行,持有为佳



交通银行 (601328):短线涨幅大,谨慎



中国建筑 (601668):震荡整理,持股观望



看股票 买彩票
全搞定
大智慧手机版
d.wapgw.cn