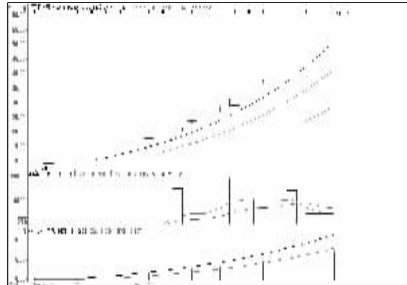


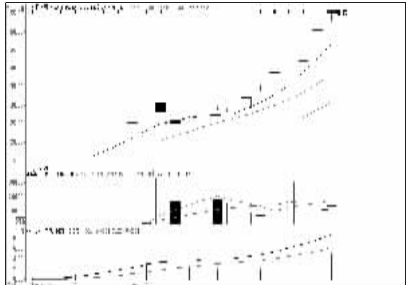
股东人数增减前10

股东人数减少前10

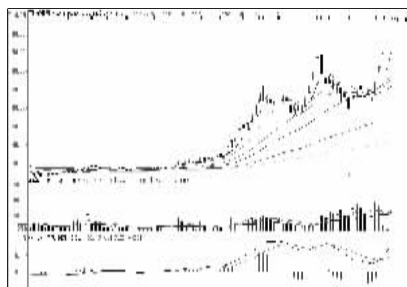


开兴股份(002752):新股,持股观望

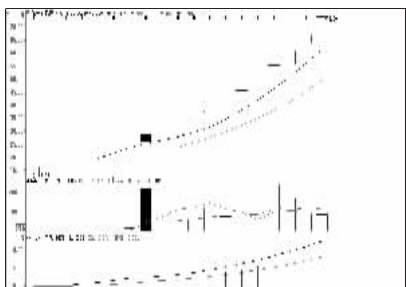
股东人数增加前10



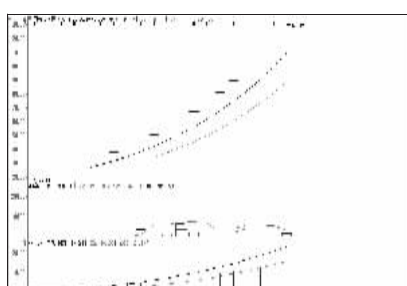
曲美股份(603818):涨速过快,逢高兑现



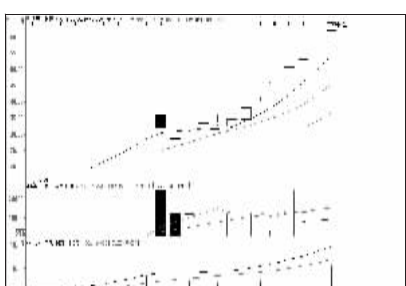
三联虹普(800384):高位放量,谨慎为宜



星光农机(603789):新股,暂且持有



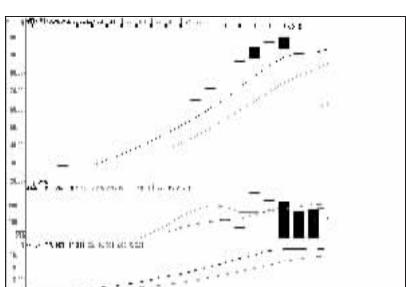
鹏辉能源(800438):新股,继续持有



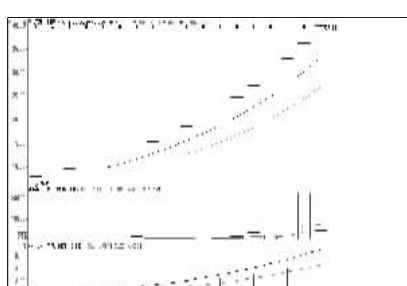
大豪科技(603025):涨速过快,逢高兑现



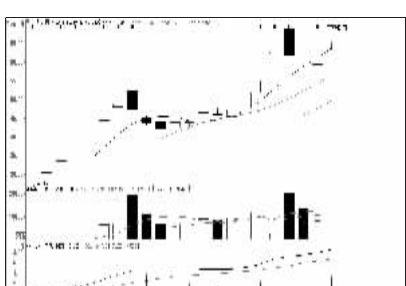
江泉实业(600212):高位滞涨,逐步兑现



老百姓(603883):高位震荡,观望为主



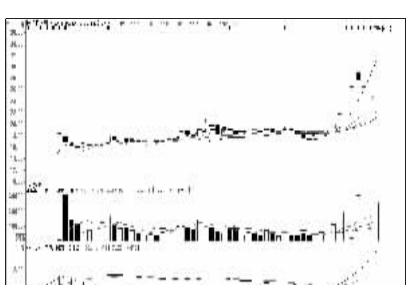
江苏有线(600959):涨幅已高,逐步止盈



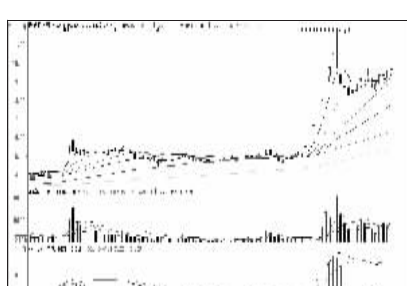
歌力思(603808):高位震荡,观望为主



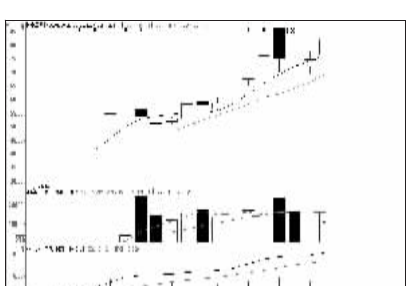
宁波热电(600982):携量上攻,继续持有



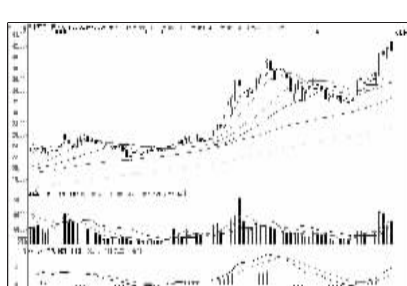
继峰股份(603997):涨幅较大,逢高兑现



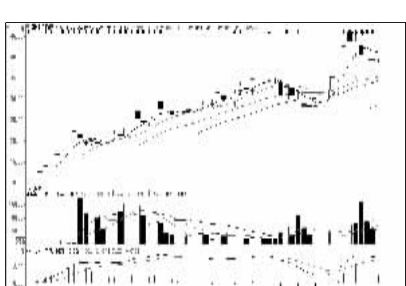
云维股份(600725):震荡攀升,持股为主



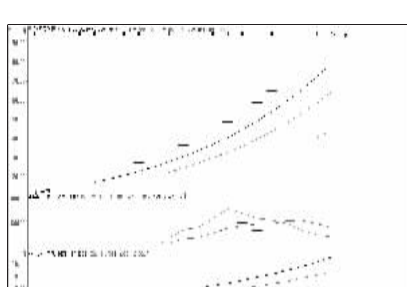
珍宝岛(603567):高位震荡,观望为主



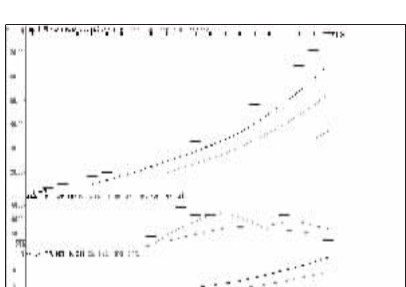
浙江美大(002677):冲高回落,谨防调整



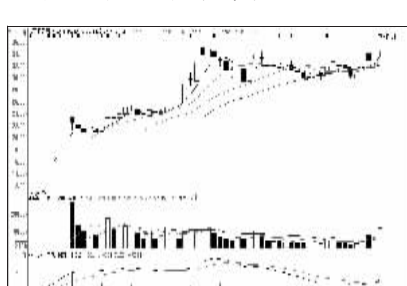
富煌钢构(002743):回调换手,观望为主



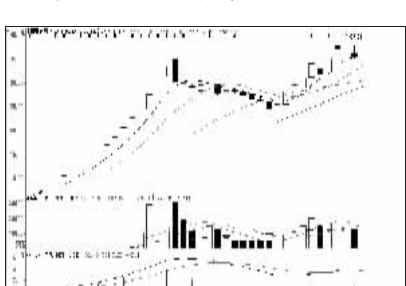
鲍斯股份(800441):新股,持股观望



山东华鹏(603021):新股,持股观望



东兴证券(601198):重拾升势,看高一线



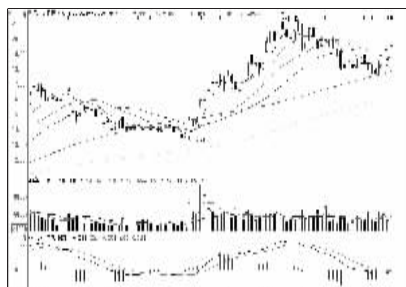
北部湾旅(603869):涨幅较大,考虑止盈

一周资金流入流出金额前10

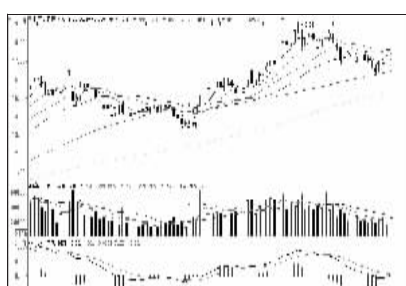
资金流入金额前10



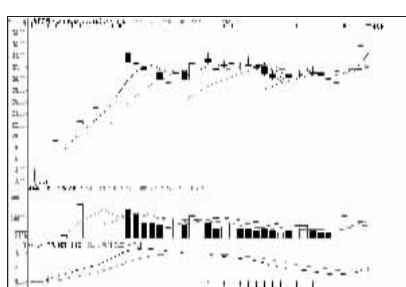
招商银行(600036):携量上行,持有为宜



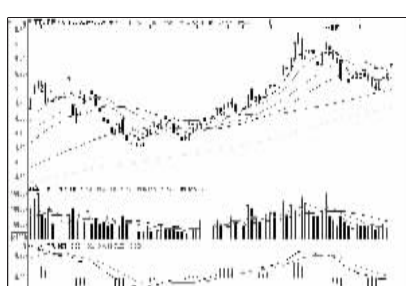
兴业银行(601166):震荡攀升,继续持股



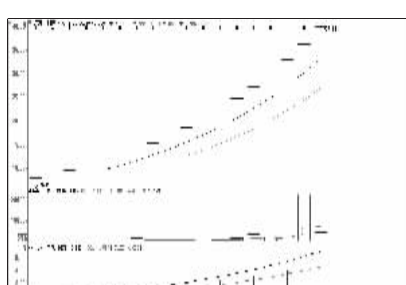
浦发银行(600000):小阳上攻,看多一线



东方证券(600958):携量上行,继续持有



工商银行(601398):温和上扬,继续持有



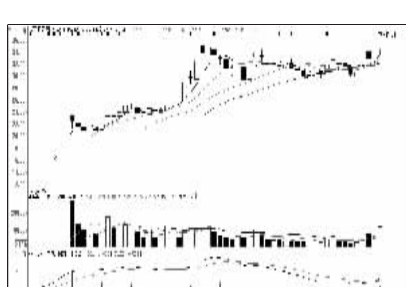
江苏有线(600959):涨幅已高,逐步止盈



民生银行(600016):滞涨品种,可以关注



中国平安(601318):温和上扬,继续持有

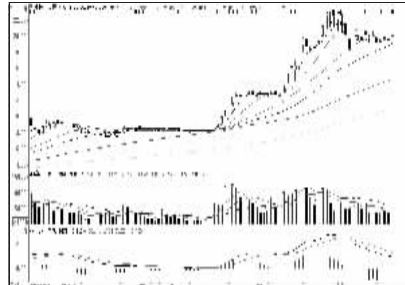


东兴证券(601198):重拾升势,看高一线

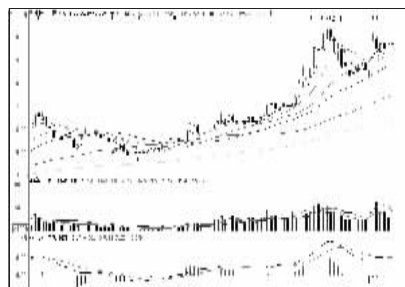


光大银行(601818):震荡蓄势,持有为宜

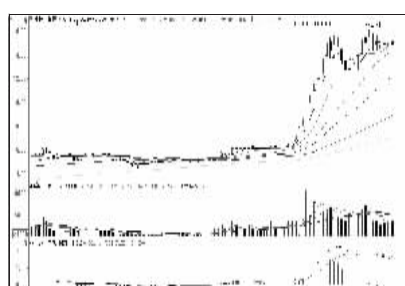
资金流出金额前10



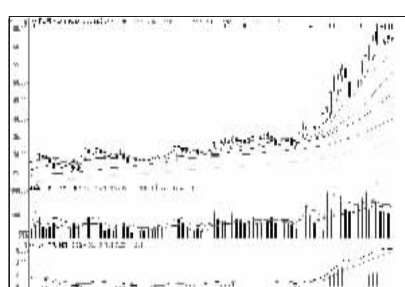
中国中铁(601390):横盘整理,观望为主



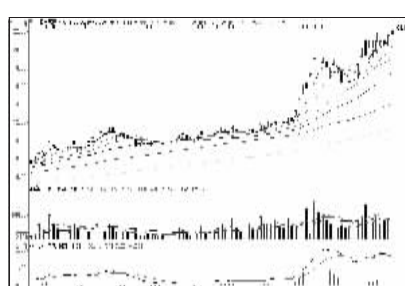
中国铝业(601600):震荡整理,持有为宜



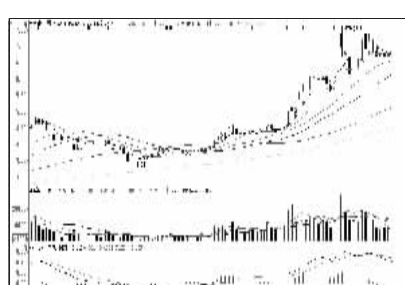
中国一重(601106):高位震荡,观望为主



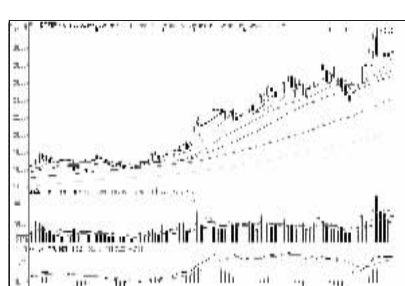
中国卫星(600118):高位震荡,适当谨慎



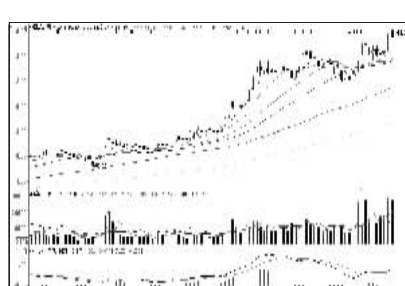
上海电气(601727):涨幅较高,适时止盈



国电电力(600795):震荡走势,观望为主



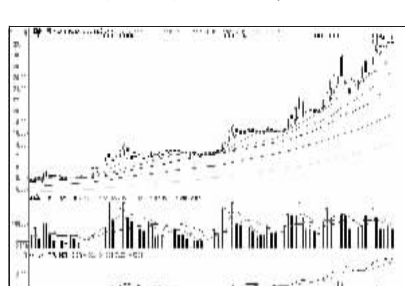
上海医药(601607):高位震荡,谨慎为宜



小商品城(600415):震荡整理,观望为主



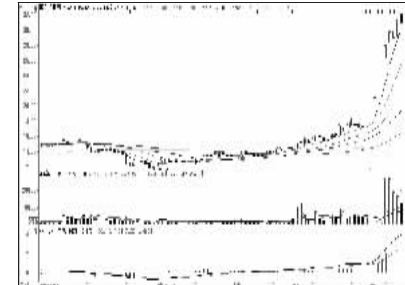
招商证券(600999):止跌企稳,观望为主



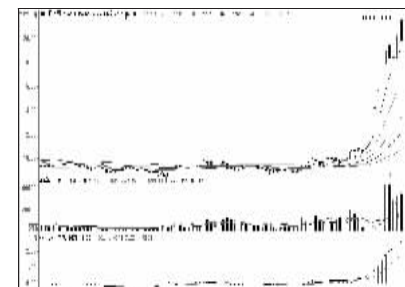
上海电力(600021):高位震荡,持股观望

周成交金额

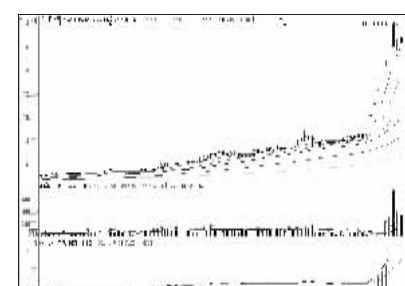
成交突增前10



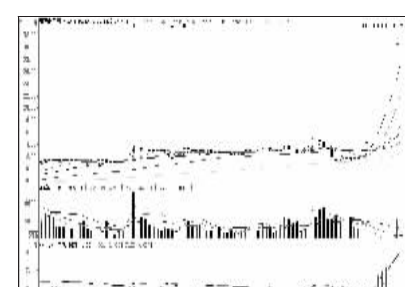
富临运业(002357):涨幅较高,逢高兑现



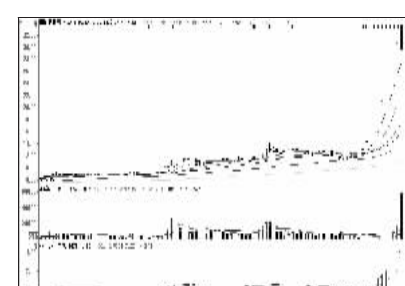
通威股份(600438):涨幅较高,逢高兑现



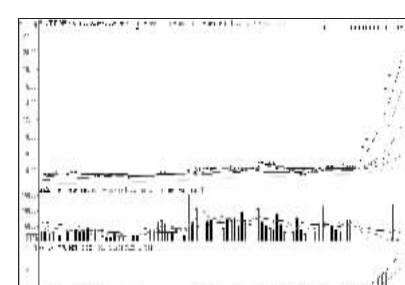
黑化股份(600179):涨幅较高,逢高兑现



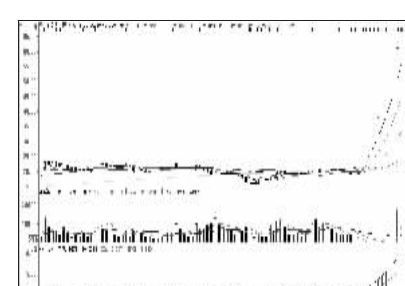
康强电子(002119):主力惜售,持股观望



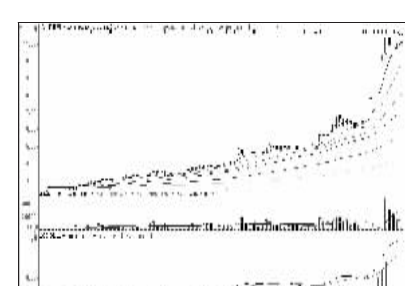
精诚铜业(002171):高位放量,谨防下跌



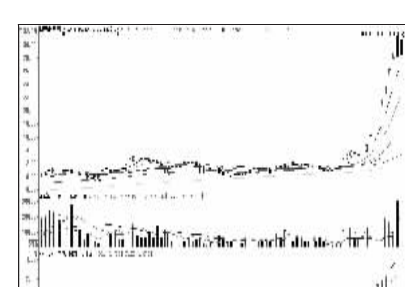
华丽家族(600503):连续涨停,持股观望



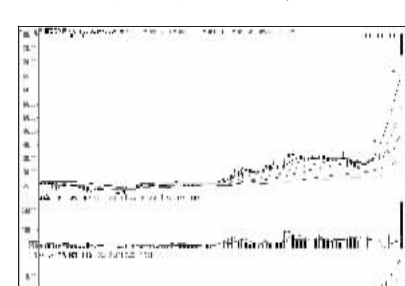
特锐德(800001):高位放量,谨防回调



湖北能源(000883):高位震荡,落袋为安



智光电气(002169):高位震荡,落袋为安

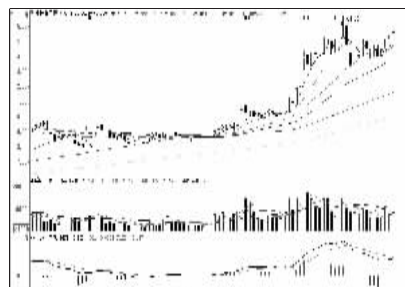


博实股份(002698):高位放量,谨防回调

成交金额前8



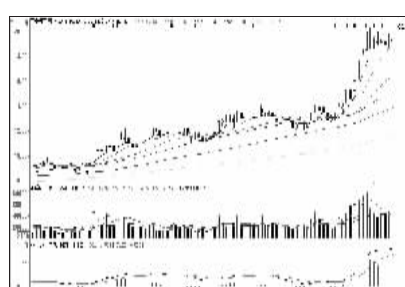
中国平安(601318):温和上扬,继续持有



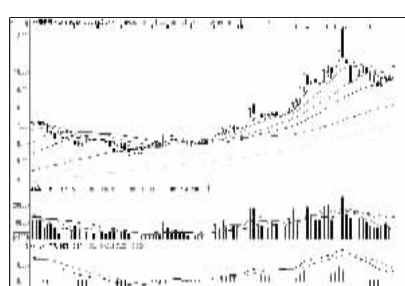
中国重工(601989):震荡稳固,持有为宜



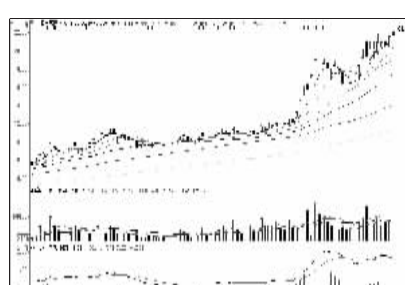
中信证券(600030):长期滞涨,持股观望



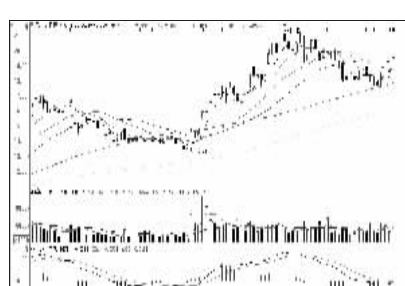
苏宁云商(002024):高位震荡,短期观望



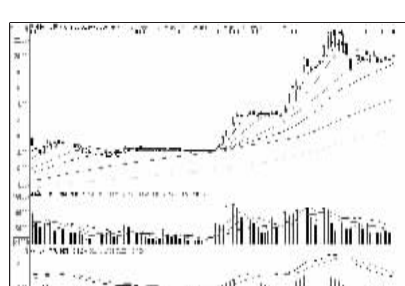
中国建筑(601668):重拾升势,持股为主



上海电气(601727):涨幅较高,适时止盈



兴业银行(601166):震荡攀升,继续持股



中国中铁(601390):横盘整理,观望为主



看股票 买彩票
全搞定
大智慧手机版
d.wapgw.cn