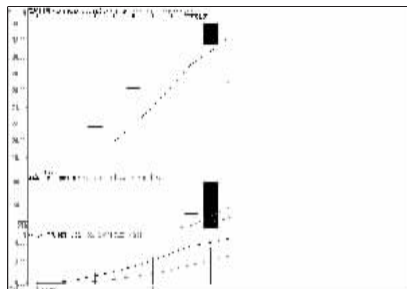
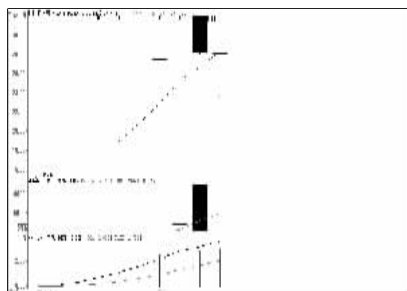


股东人数增减前10

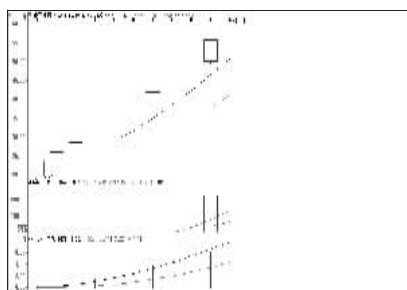
股东人数减少前10



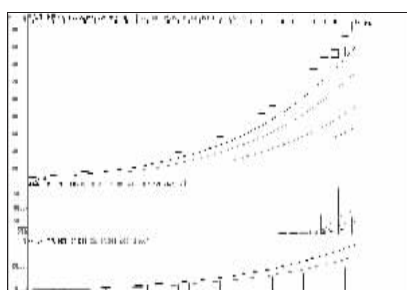
盛洋科技 (603703):波动加剧,注意风险



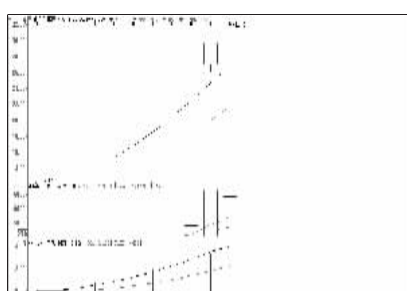
福鞍股份 (603315):波动加剧,注意风险



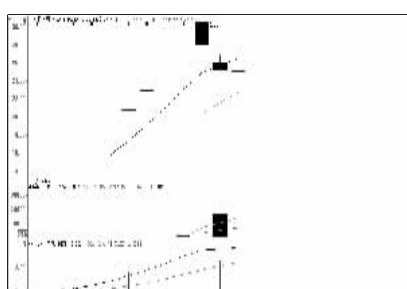
老百姓 (603883):高位滞涨,注意风险



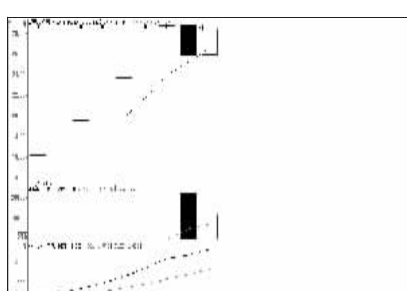
暴风科技 (800431):涨幅过高,逐步止盈



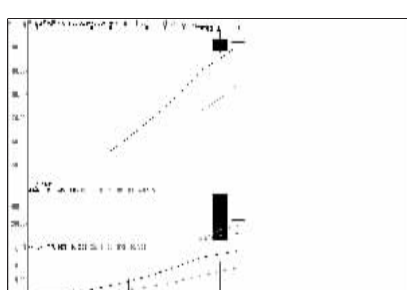
山东华鹏 (603021):高位滞涨,谨防调整



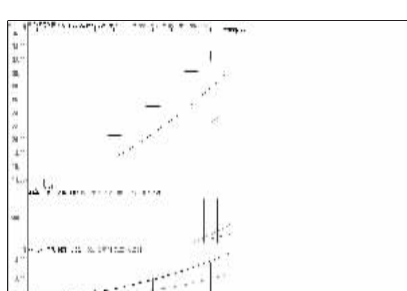
曲美股份 (603818):高位震荡,持股观望



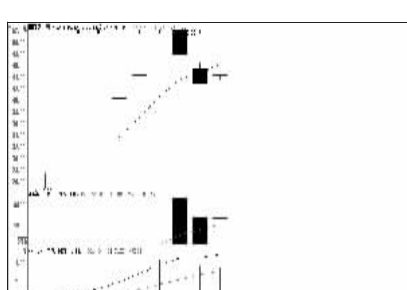
星光农机 (603789):波动加剧,注意风险



金雷风电 (800443):高位震荡,持股观望

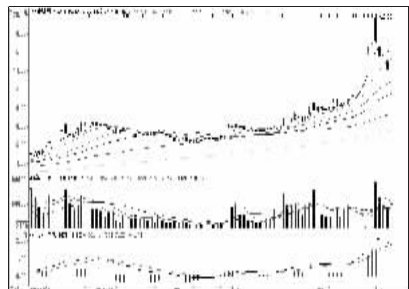


鲍斯股份 (800441):量能放大,分歧加剧

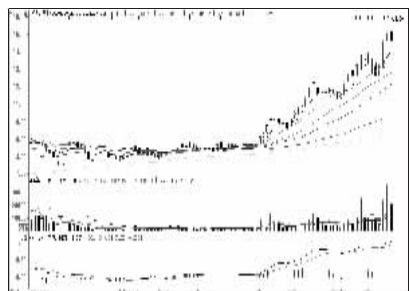


普丽盛 (800442):高位震荡,观望为主

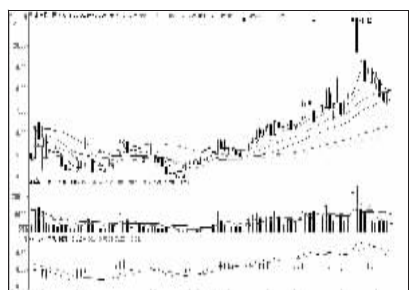
股东人数增加前10



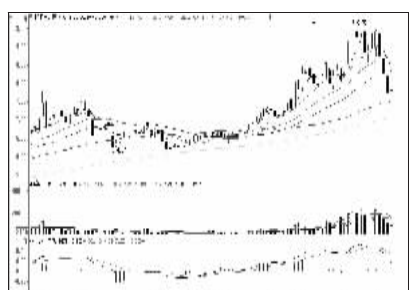
中国电建 (601669):高位回调,暂时观望



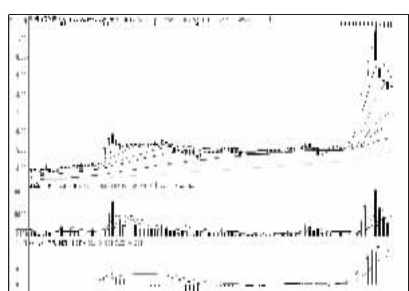
中毅达 (600610):买气不济,谨慎为宜



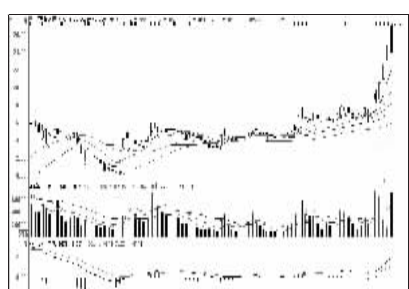
禾丰牧业 (603609):量能不济,观望为主



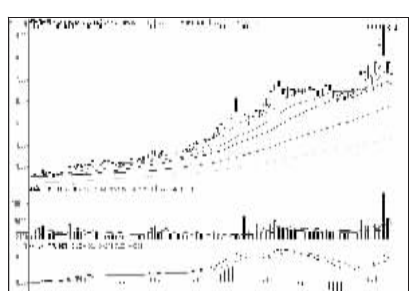
浙能电力 (600023):调整走势,短期谨慎



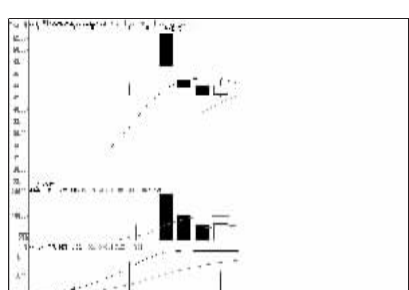
云维股份 (600725):回调充分,或将企稳



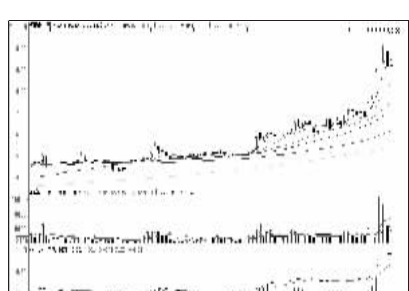
兰石重装 (603169):多空激战,方向不明



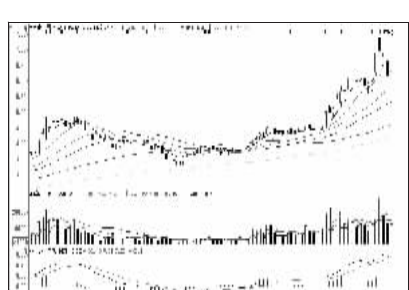
华锐风电 (601558):高位回调,谨慎为宜



歌力思 (603808):高位震荡,观望为主



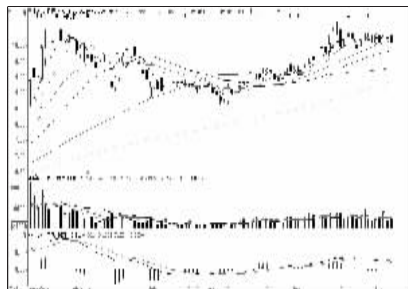
华银电力 (600744):高位回调,短期谨慎



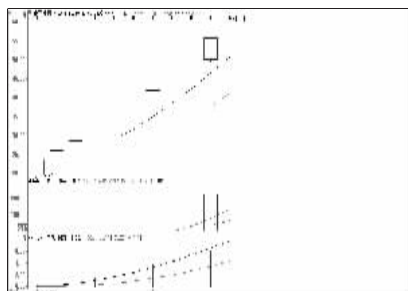
国电电力 (600795):震荡格局,持股观望

一周资金流入流出金额前10

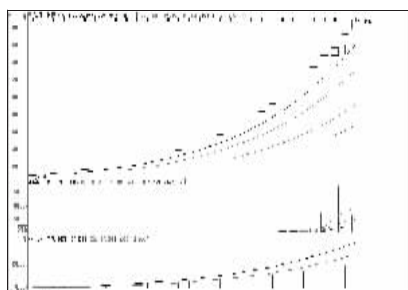
资金流入金额前10



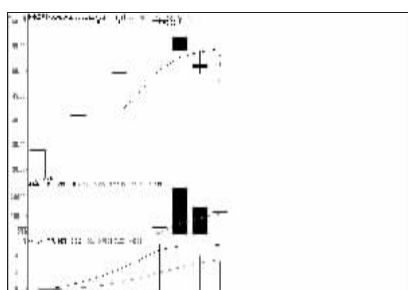
民生银行 (600016):蓄势整理,持有为宜



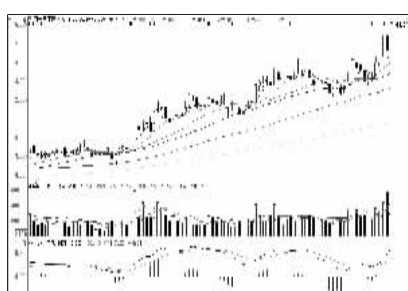
老百姓 (603883):高位滞涨,注意风险



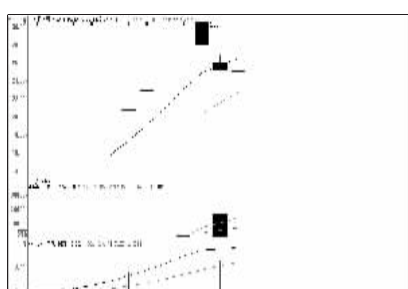
暴风科技 (800431):涨幅过高,逐步止盈



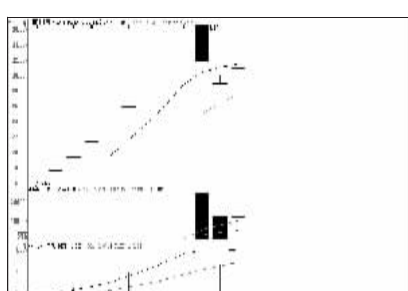
珍宝岛 (603567):次新股,持股观望



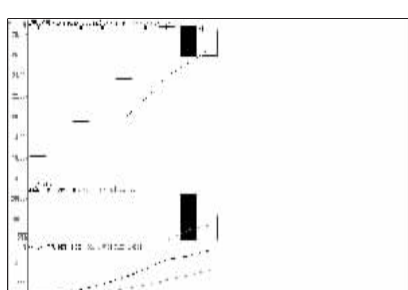
苏宁云商 (002024):量价齐升,看高一线



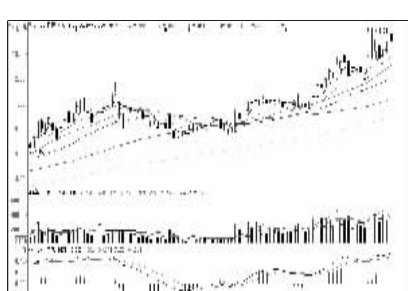
曲美股份 (603818):高位震荡,观望为宜



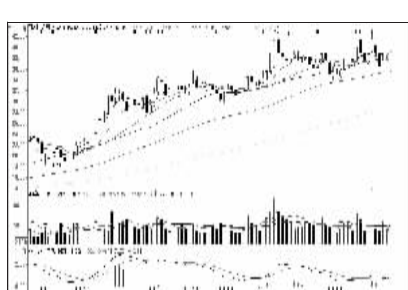
大豪科技 (603025):次新股,持股观望



星光农机 (603789):波动加剧,注意风险

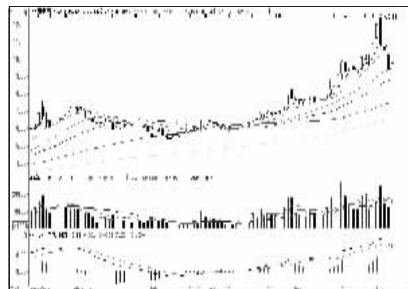


北京银行 (601169):震荡盘升,看高一线

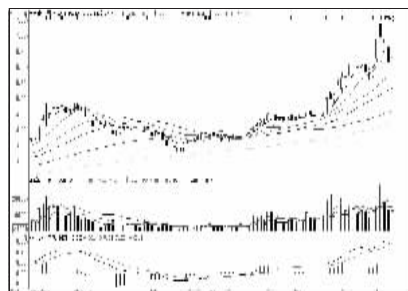


用友网络 (600588):携量反弹,持有为宜

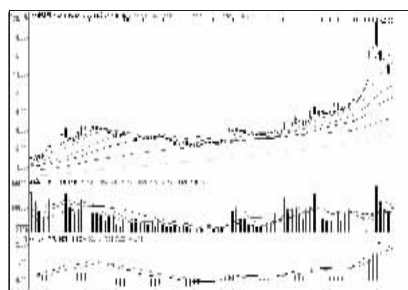
资金流出金额前10



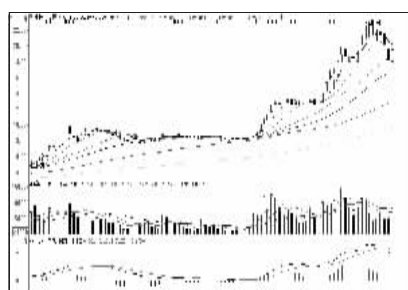
中国建筑 (601668):强势品种,尝试低吸



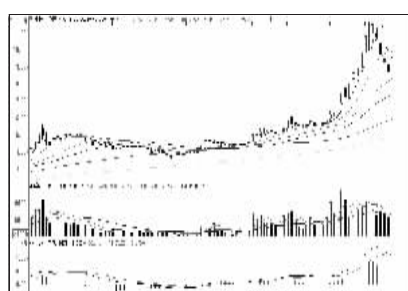
国电电力 (600795):震荡格局,持股观望



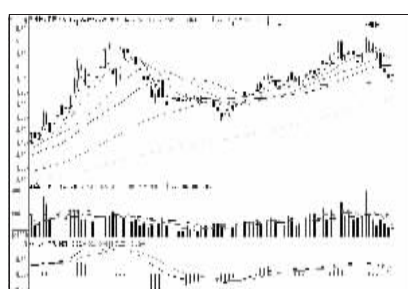
中国电建 (601669):高位回调,暂时观望



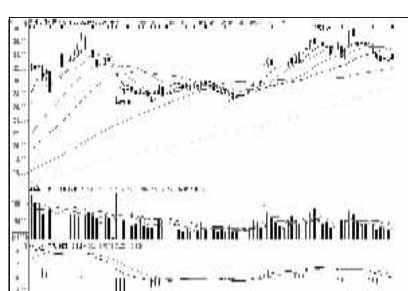
中国中铁 (601390):强势品种,适当介入



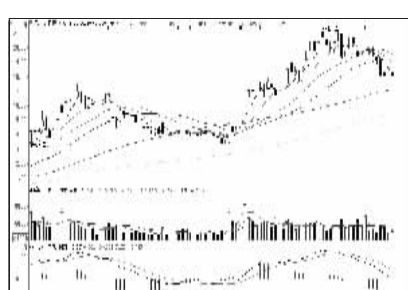
中国中冶 (601618):回调充分,或将企稳



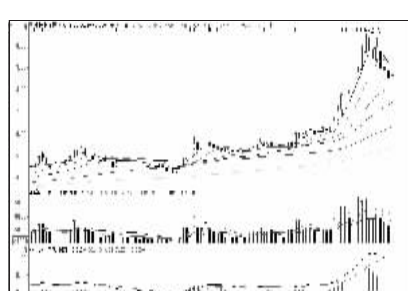
中国银行 (601988):有企稳可能,观望



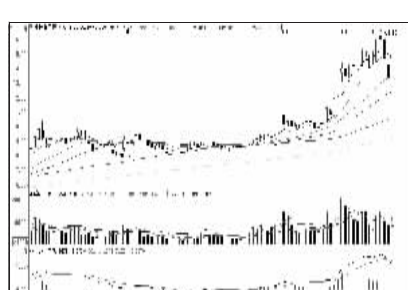
中信证券 (600030):弱势整理,持股观望



兴业银行 (601166):止跌回稳,观望为妙



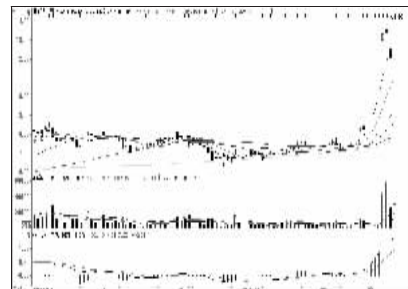
中国联通 (600050):回调充分,尝试低吸



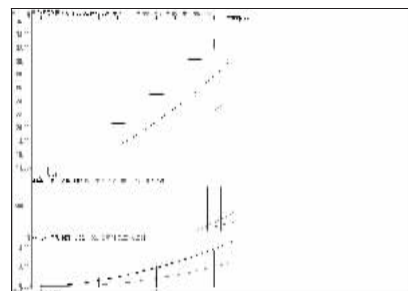
中国重工 (601989):冲高回落,谨慎为宜

周成交金额

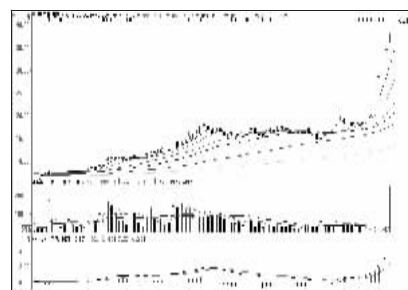
成交突增前10



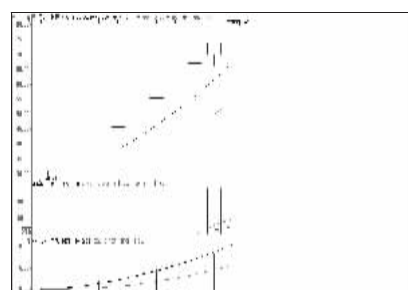
海伦哲 (800201):活跃品种,短线参与



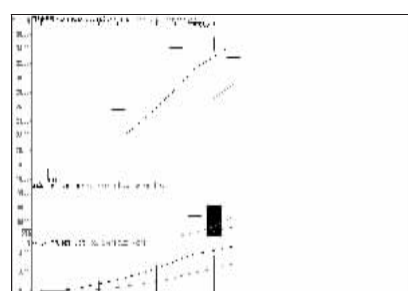
鲍斯股份 (800441):量能放大,分歧加剧



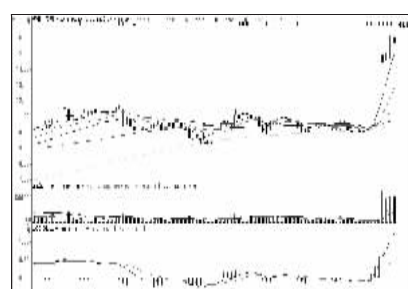
天龙集团 (800063):高位放量,注意止盈



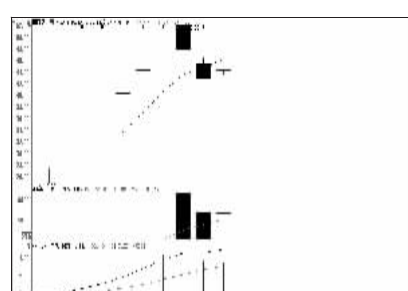
运达科技 (800440):高位放量,落袋为安



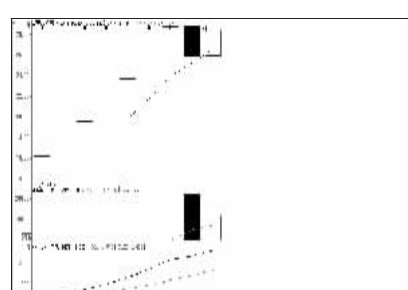
双杰电气 (800444):波动加剧,注意风险



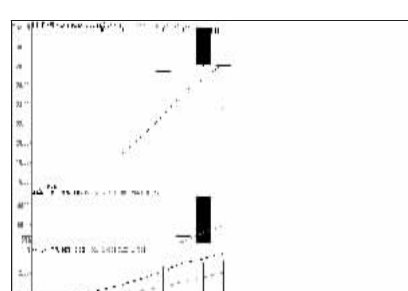
华媒控股 (000607):高位滞涨,谨防调整



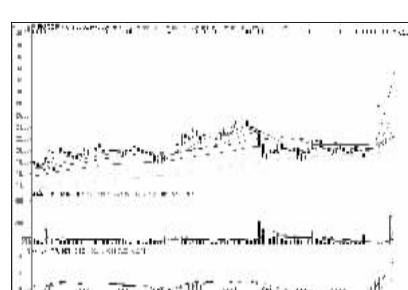
普丽盛 (800442):高位震荡,观望为主



星光农机 (603789):波动加剧,注意风险

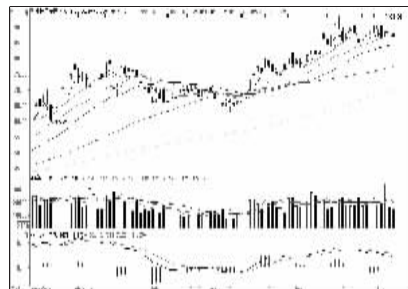


福鞍股份 (603315):波动加剧,注意风险

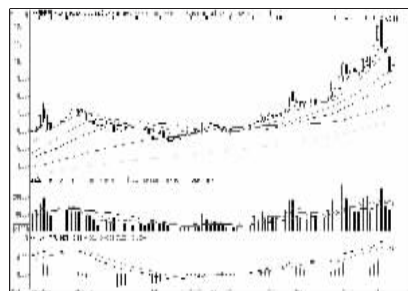


通鼎互联 (002491):成交突增,落袋为安

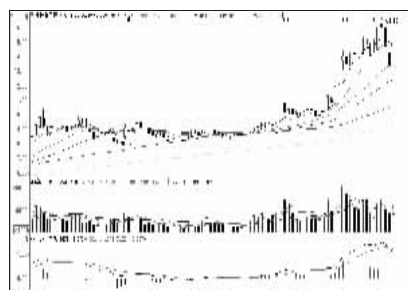
成交金额前8



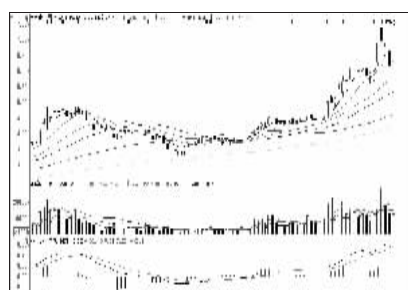
中国平安 (601318):横盘整理,持有为宜



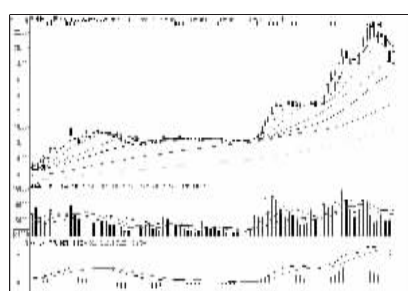
中国建筑 (601668):强势品种,尝试低吸



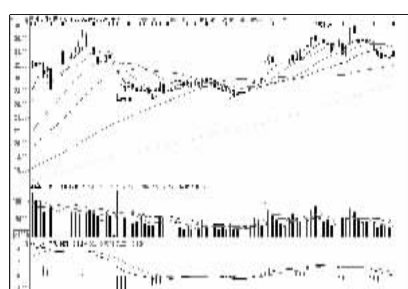
中国重工 (601989):冲高回落,谨慎为宜



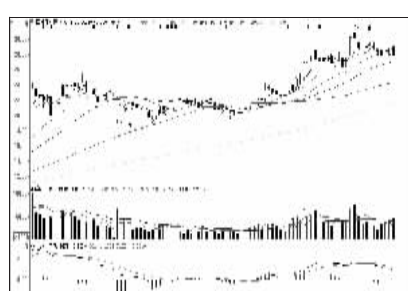
国电电力 (600795):冲高回落,谨慎为宜



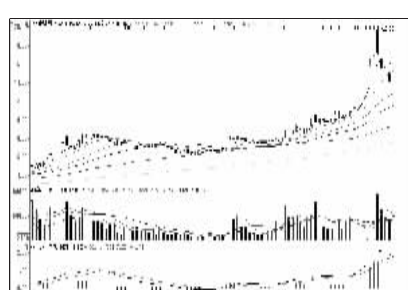
中国中铁 (601390):强势品种,适当介入



中信证券 (600030):弱势整理,持股观望



海通证券 (600837):横盘拉锯,持有为宜



中国电建 (601669):高位回调,暂时观望



看股票 买彩票
全搞定
大智慧手机版
d.wapgw.cn