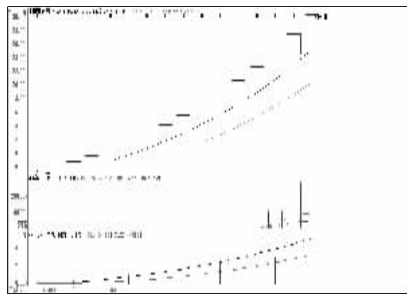


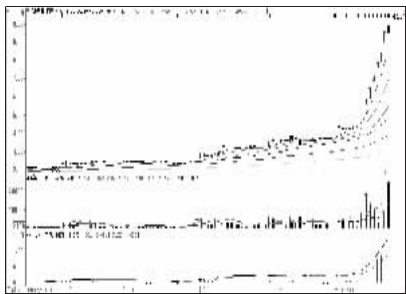
股东人数增减前10

股东人数减少前10



北部湾旅 (603869):升势强劲,仍有空间

股东人数增加前10



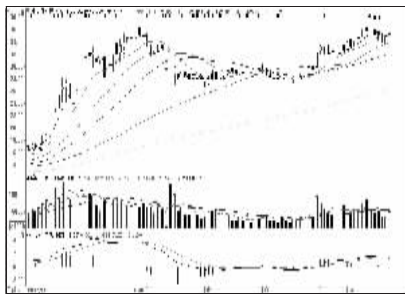
楚天高速 (600035):高位放量,出局为宜

资金流入金额前10



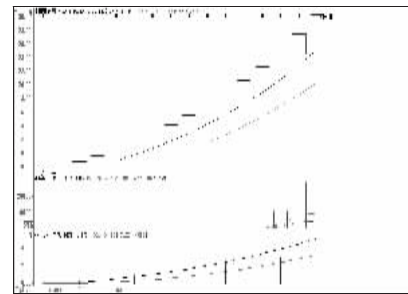
中国重工 (601989):强势格局,低吸

资金流出金额前10



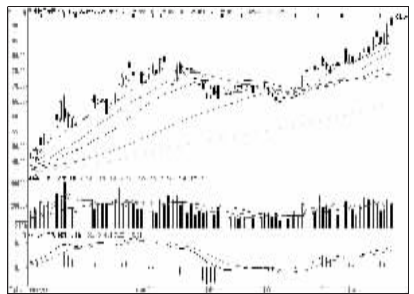
中信证券 (600030):短线趋弱,减仓观望

成交突增前10

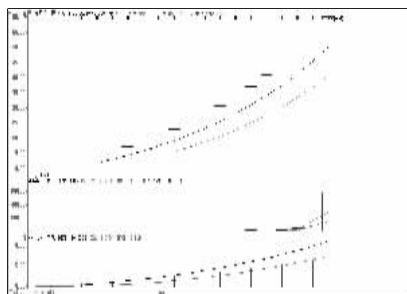


北部湾旅 (603869):升势强劲,仍有空间

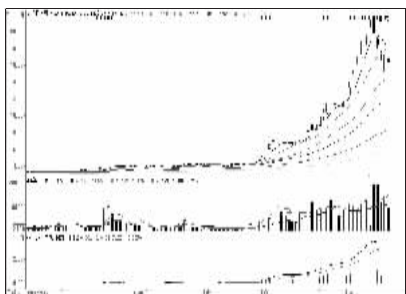
成交金额前8



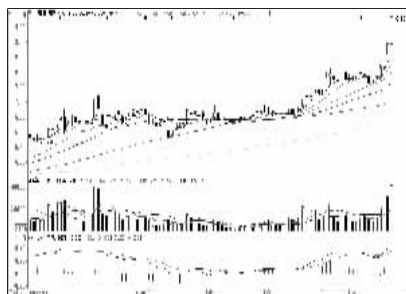
中国平安 (601318):震荡向上,逢低吸纳



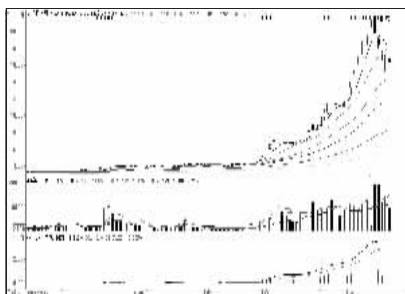
埃斯顿 (002747):买气旺盛,看高一线



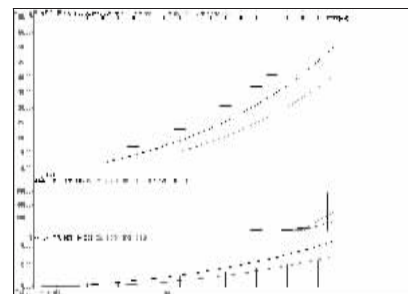
文峰股份 (601010):仍有向下空间,离场



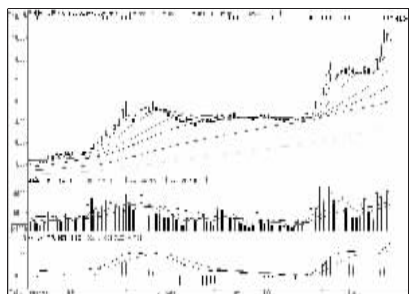
上港集团 (600018):多头市道,跟进



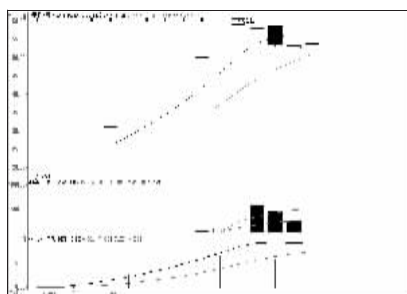
文峰股份 (601010):仍有向下空间,离场



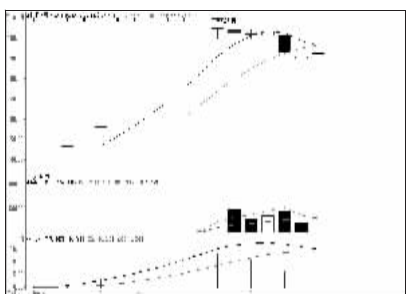
埃斯顿 (002747):买气旺盛,看高一线



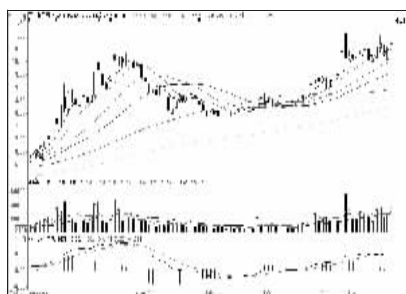
中国中铁 (601390):买盘强大,适当跟进



中泰股份 (800435):短线震荡,仍有机会



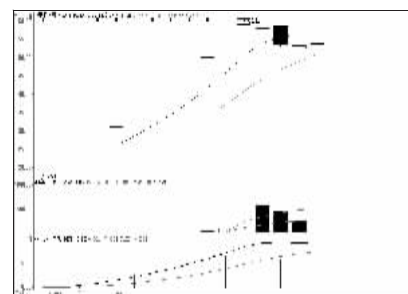
龙韵股份 (603729):短线趋弱,暂时回避



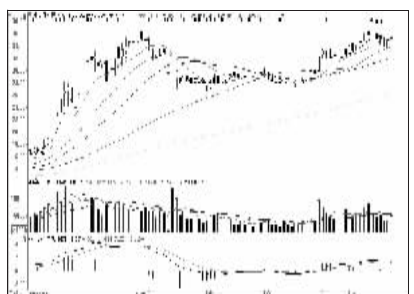
三一重工 (600031):上升形态,低吸



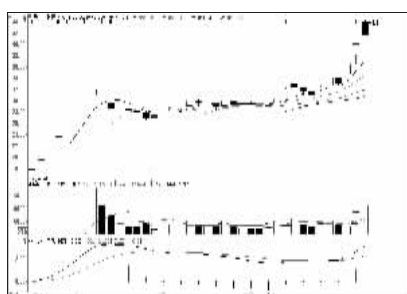
农业银行 (601288):多头格局,持股为主



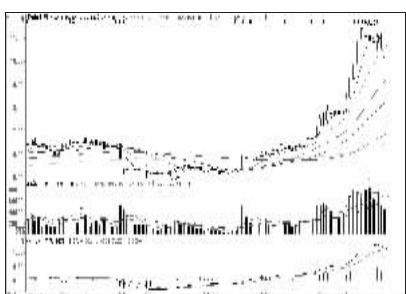
中泰股份 (800435):短线震荡,仍有机会



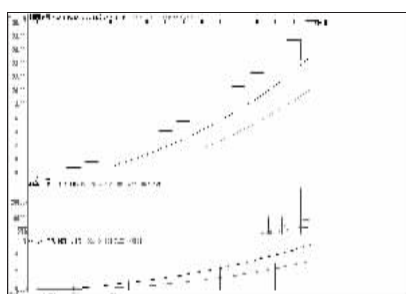
中信证券 (600030):短线趋弱,减仓观望



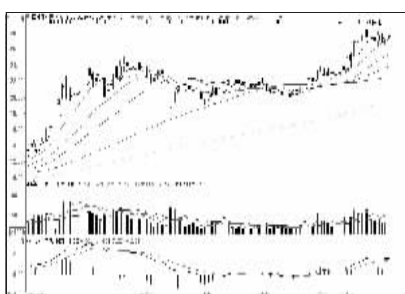
光华科技 (002741):多头格局,积极关注



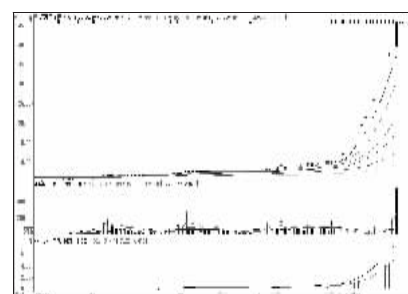
江粉磁材 (002600):仍有调整空间,减仓



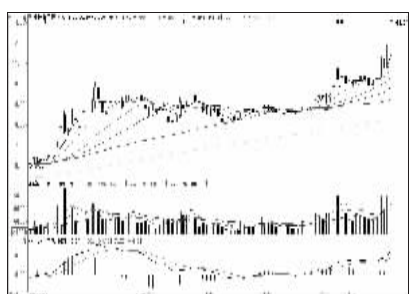
北部湾旅 (603869):升势强劲,仍有空间



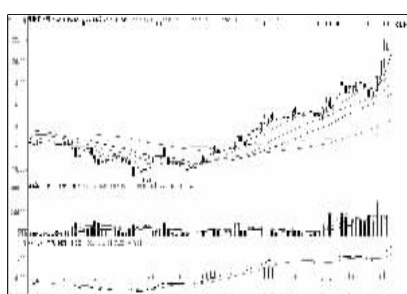
海通证券 (600837):短线承压,观望为宜



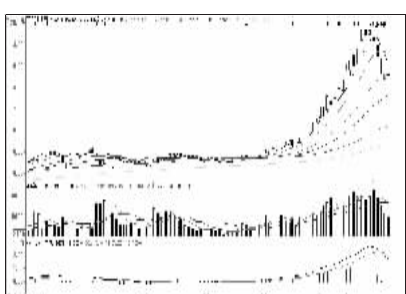
江苏三友 (002044):高位震荡,暂时观望



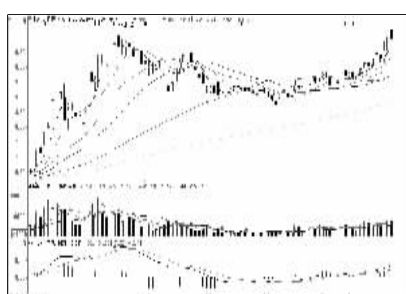
中国重工 (601989):强势格局,低吸



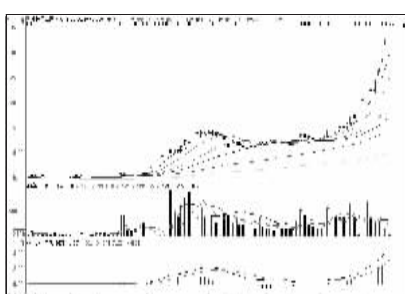
凯撒股份 (002425):均线良好,跟进



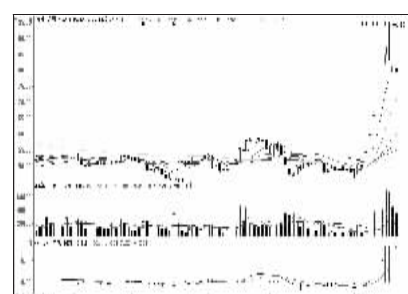
亚太科技 (002540):调整未完,减仓观望



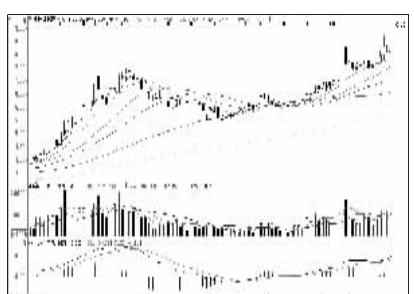
民生银行 (600016):短线承压,减仓操作



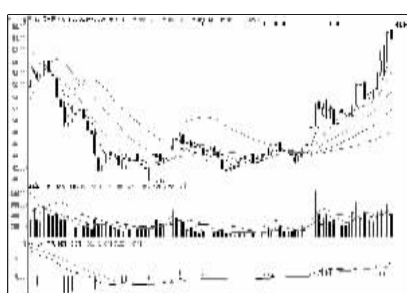
中国南车 (601766):涨幅较大,谨慎持股



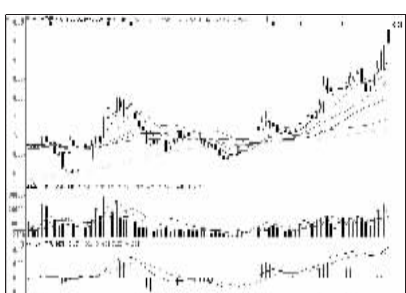
游族网络 (002174):仍有调整压力,回避



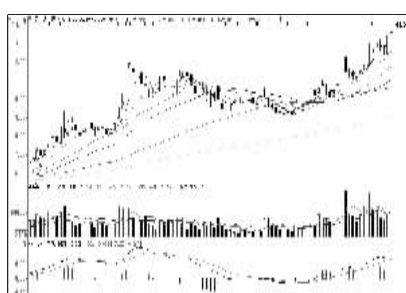
中国建筑 (601668):多头市道,择机加仓



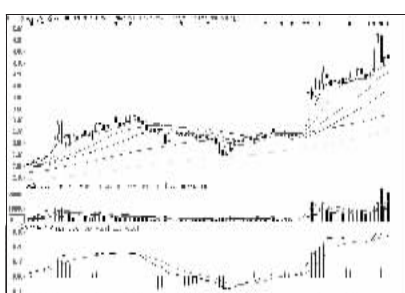
德尔汉宇 (800403):多头市道,持股为主



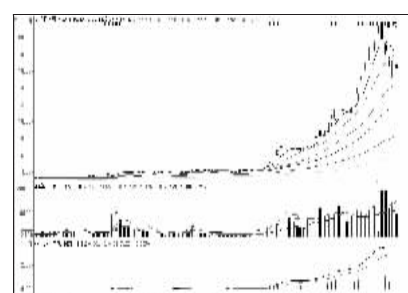
国中水务 (600187):上攻乏力,逢高出局



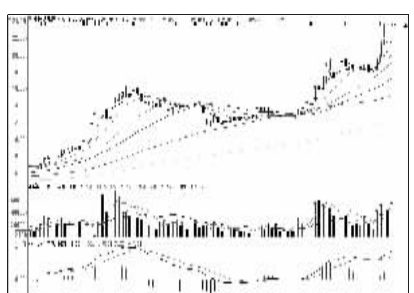
保利地产 (600048):多头格局,逢低介入



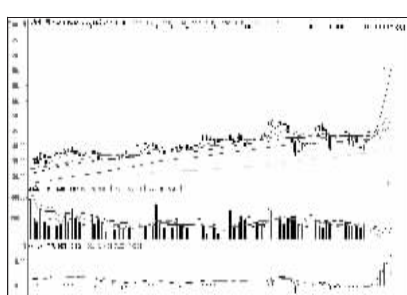
京东A (00725):震荡加剧,短线出局



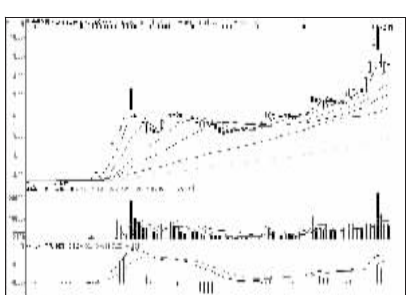
文峰股份 (601010):仍有向下空间,离场



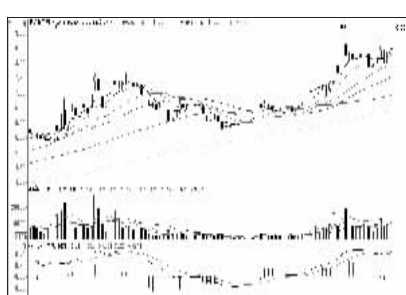
中国铁建 (601186):形态良好,持有



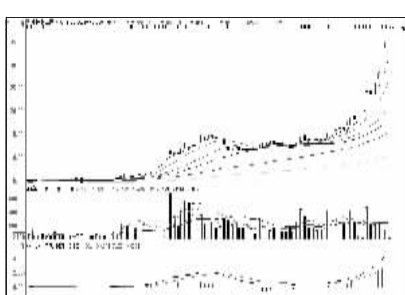
东方通 (800379):多方强大,看高一线



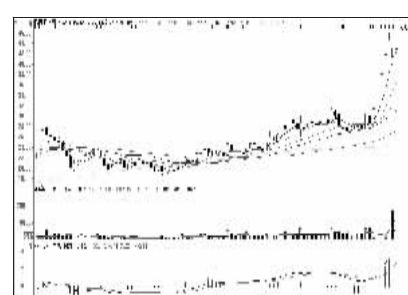
赤天化 (600227):仍需整固,短线回避



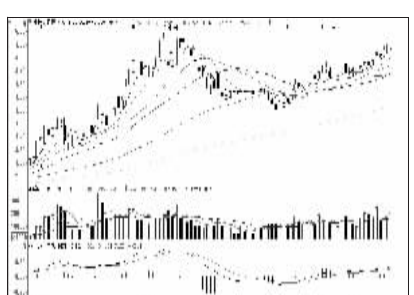
振华重工 (600320):强势格局,低吸



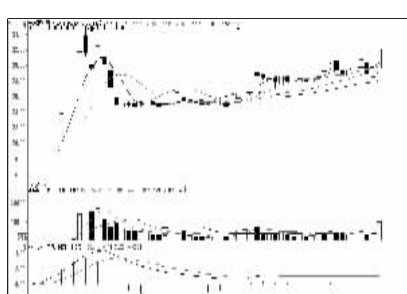
中国北车 (601299):涨幅较大,谨慎持股



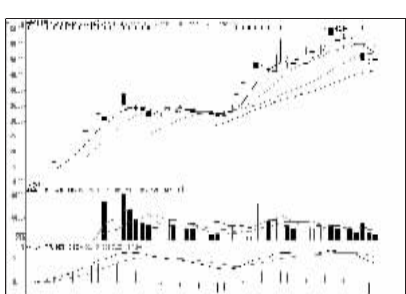
松德股份 (800173):上升格局,持股为主



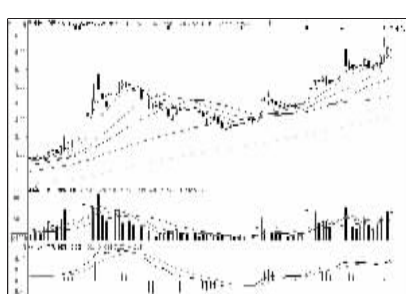
中国银行 (601988):多头格局,持股为主



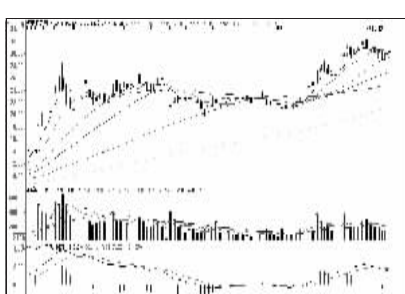
宁波高发 (603788):主力抬升,跟进



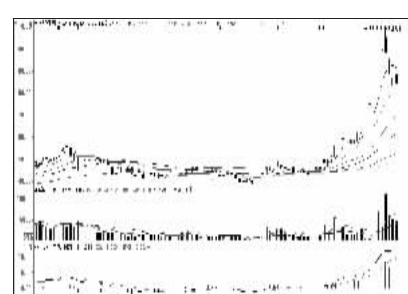
再升科技 (603601):仍有向下空间,回避



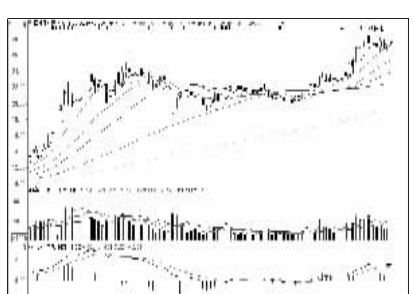
中国中冶 (601618):多头格局,逢低介入



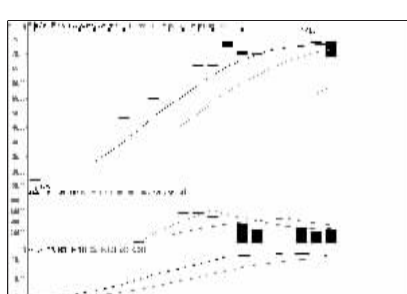
华泰证券 (601688):短线承压,观望为宜



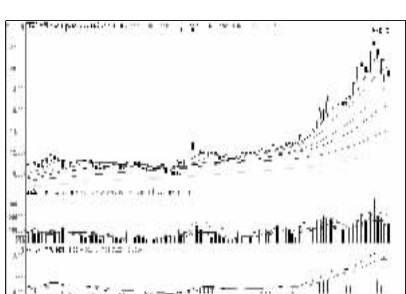
国祯环保 (800388):买盘不济,减仓



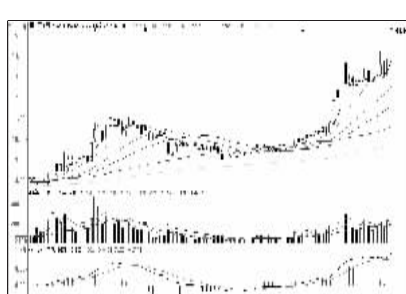
海通证券 (600837):短线承压,观望为宜



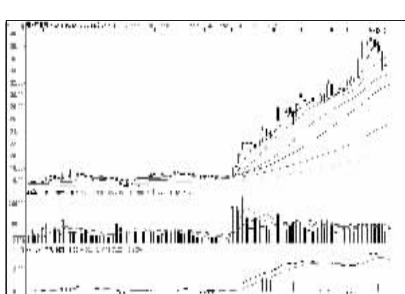
诚益通 (800430):向下空间有限,低吸



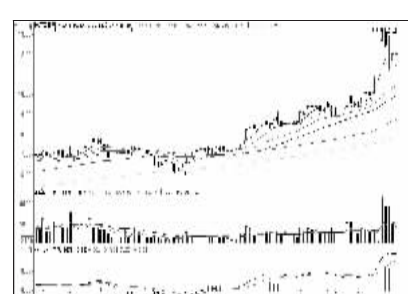
百隆东方 (601339):短线趋弱,减仓观望



海油工程 (600583):形态良好,跟进



康美药业 (600518):升势未尽,继续持股



珠江实业 (600684):多头形态,逢低加仓



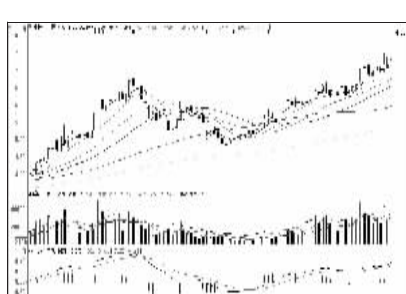
洲际油气 (600759):高位滞涨,出局为主



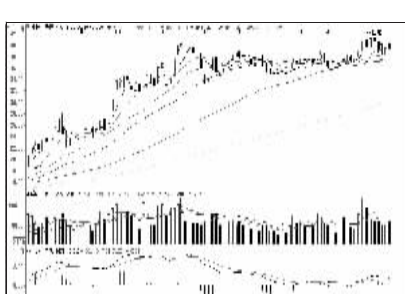
赤峰黄金 (600988):攻势减弱,短线离场



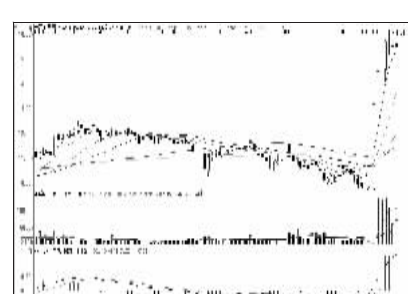
东方电缆 (603606):中期形态尚好,持股



中国铝业 (601600):拉升明显,持股不追



中国人寿 (601628):中期向好,持股为宜



洲际油气 (600759):高位滞涨,出局为主



看股票 买彩票
全搞定
大智慧手机版
d.wapgw.cn