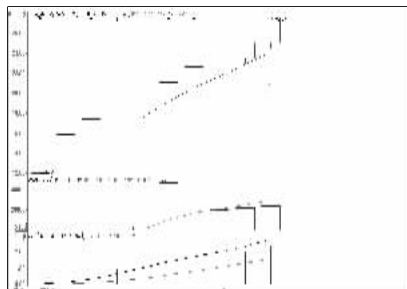


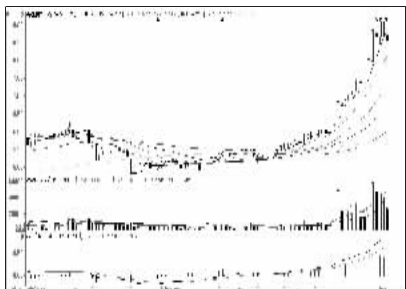
## 股东人数增减前10

股东人数减少前10



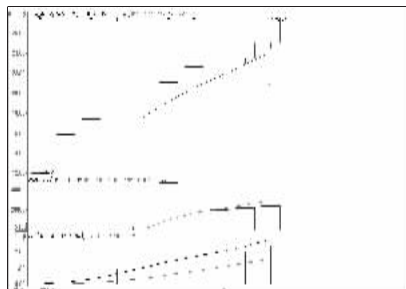
东方证券 (600958):新股,暂且持有

股东人数增加前10



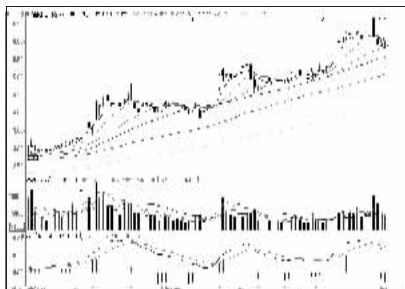
实达集团 (600734):高位回调,谨慎为宜

资金流入金额前10



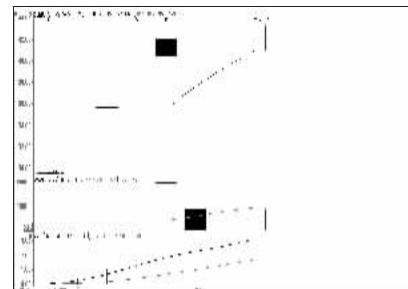
东方证券 (600958):新股,暂且持有

资金流出金额前10



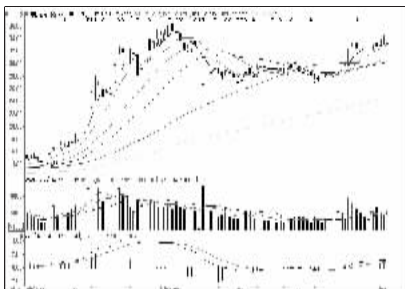
宝钢股份 (600010):买气不济,出货为宜

成交突增前10

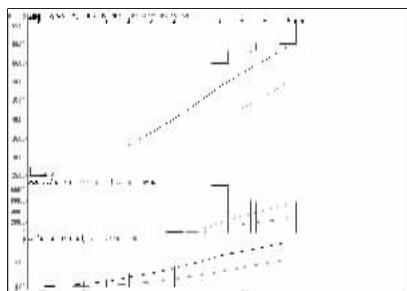


爱普股份 (603020):新股,暂且持有

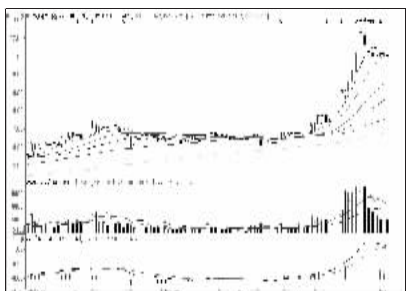
成交金额前8



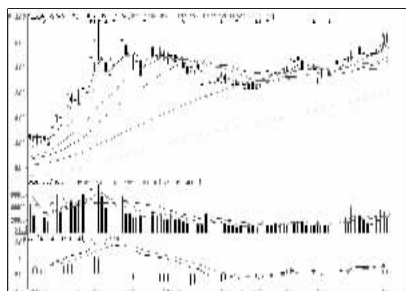
中信证券 (600030):强势特征明显



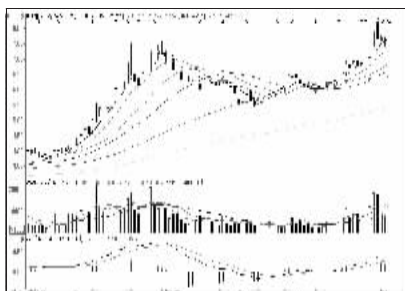
诚益通 (800430):新股,暂且持有



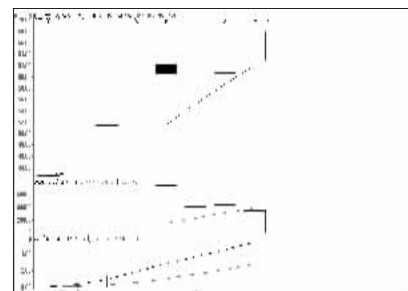
保税科技 (600794):可能跌出整理区



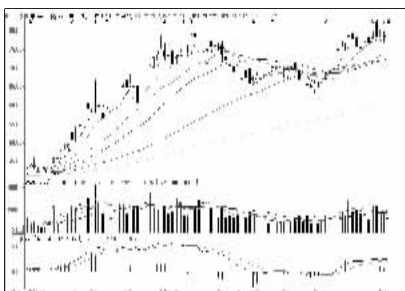
兴业证券 (601377):上行格局,继续持有



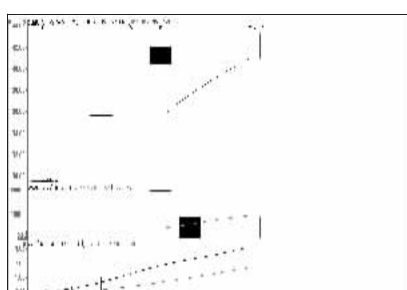
中国建筑 (601668):高位回调,注意风险



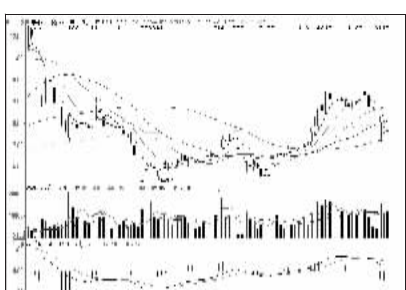
浙江鼎力 (603338):新股,暂且持有



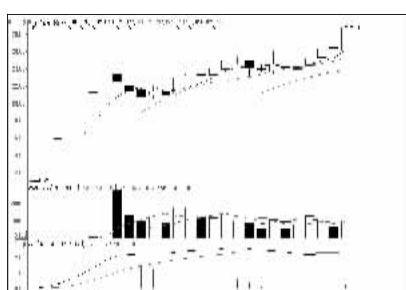
中国平安 (601318):上行可能性较大



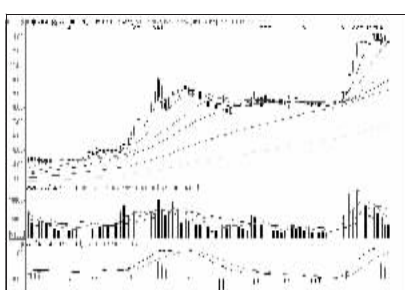
爱普股份 (603020):新股,暂且持有



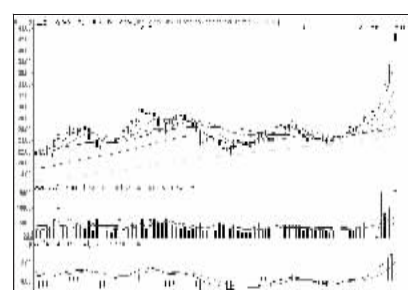
中科云网 (002306):财务堪忧,注意止损



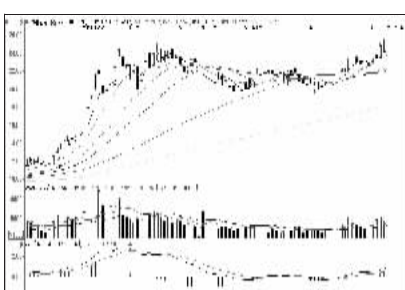
东兴证券 (601198):涨势良好,介入为主



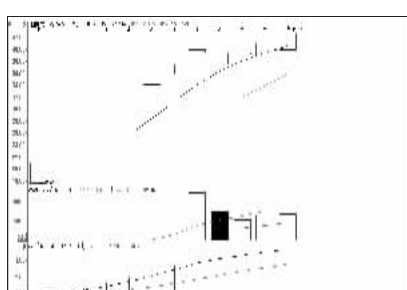
中国中铁 (601390):高位震荡,谨防调整



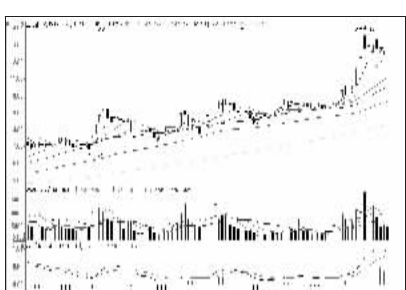
众业达 (002441):高位滞涨,落袋为安



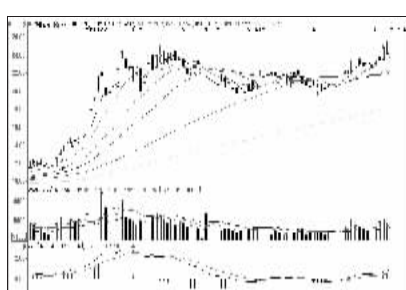
海通证券 (600837):上行趋势,持有为主



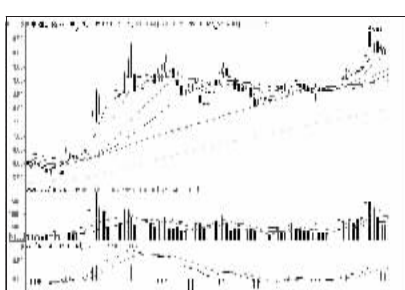
四通新材 (800428):强势格局,持有为宜



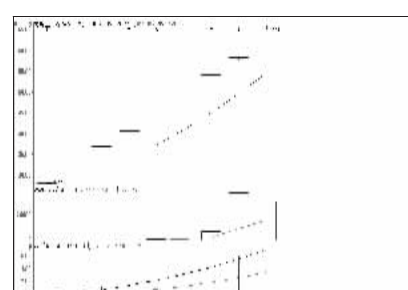
连云港 (601008):有望继续走强



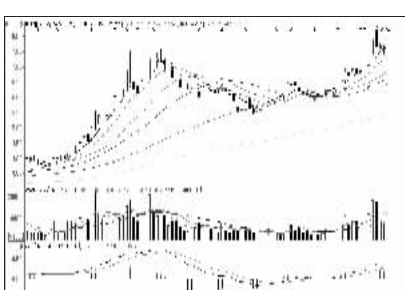
海通证券 (600837):上行趋势,持有为主



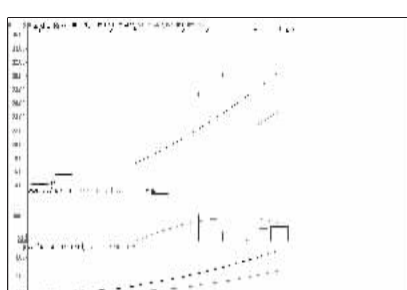
中国重工 (601989):震荡整理,观望为主



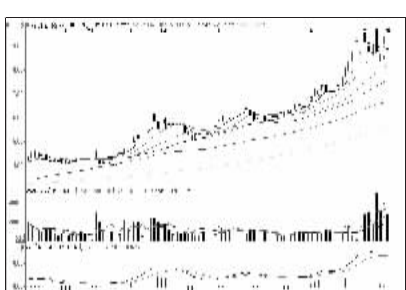
龙津药业 (002750):换手加快,逐步止盈



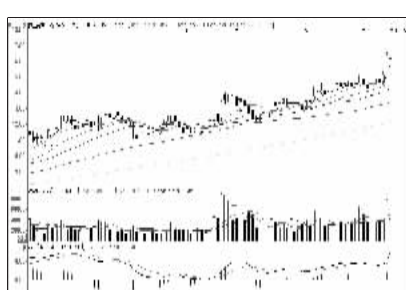
中国建筑 (601668):回调换手,观望为妙



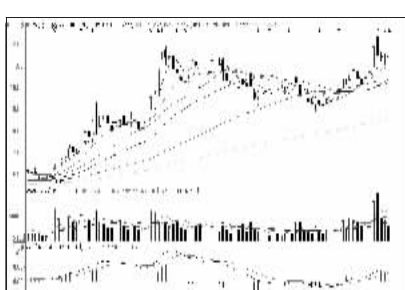
全筑股份 (603030):新股,暂且持有



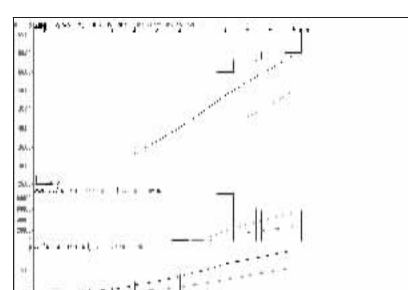
石化油服 (600871):可能继续回调



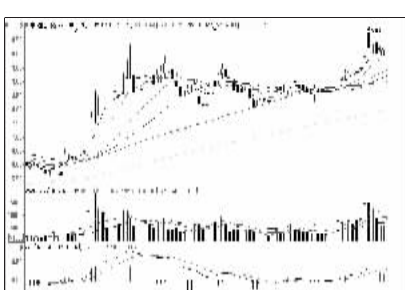
豫园商城 (600655):加速上涨,看高一线



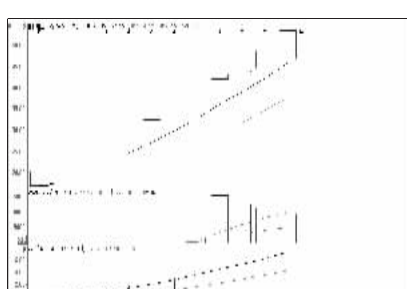
保利地产 (600048):短线回调,伺机介入



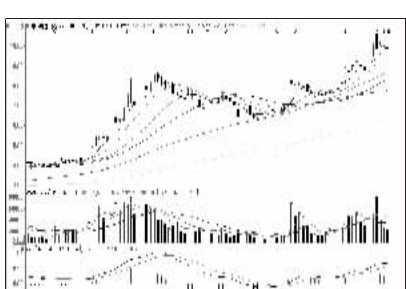
诚益通 (800430):新股,暂且持有



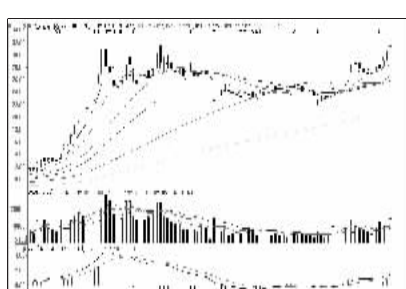
中国重工 (601989):震荡整理,观望为主



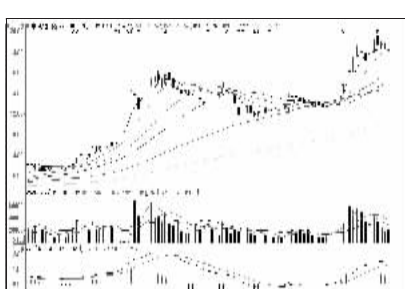
富临精工 (800432):新股,暂且持有



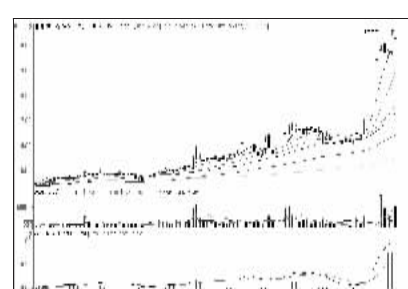
中国电建 (601669):止升回落,高抛为主



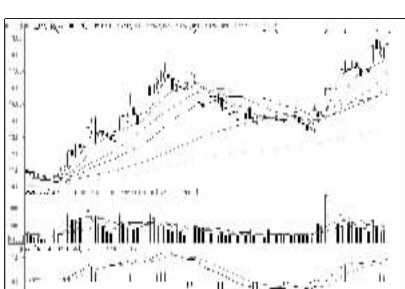
光大证券 (601788):上行趋势,持有为主



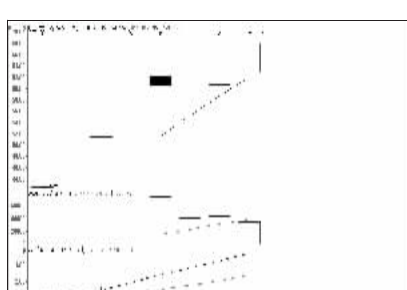
中国铁建 (601186):高位回调,注意风险



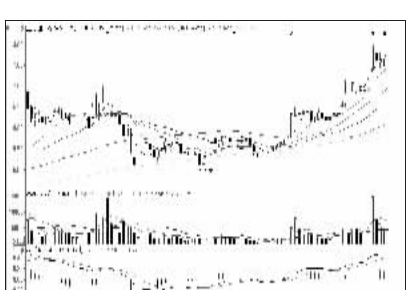
渝开发 (000514):高位震荡,谨慎为宜



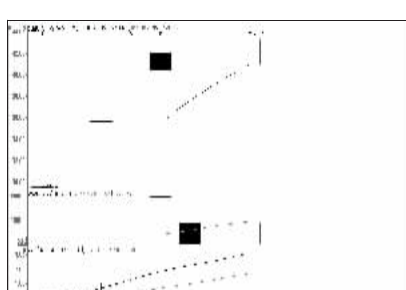
兴业银行 (601166):强势格局,持有为宜



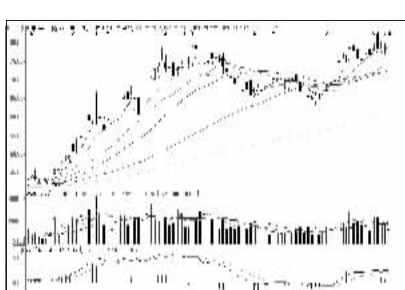
浙江鼎力 (603338):新股,暂且持有



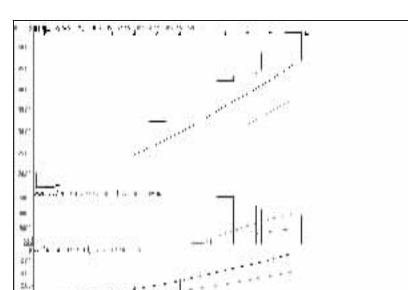
五洲交通 (600368):高位震荡,暂且观望



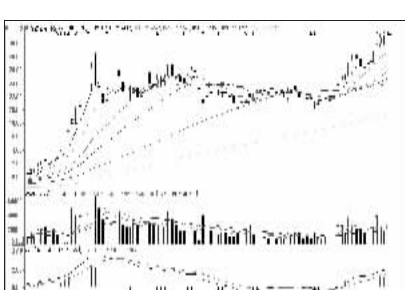
爱普股份 (603020):新股,暂且持有



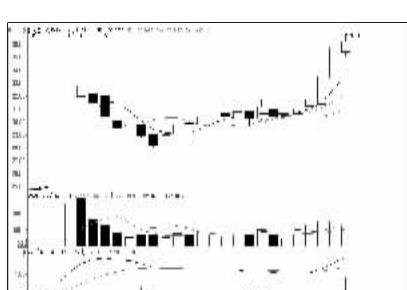
中国平安 (601318):上行可能性较大



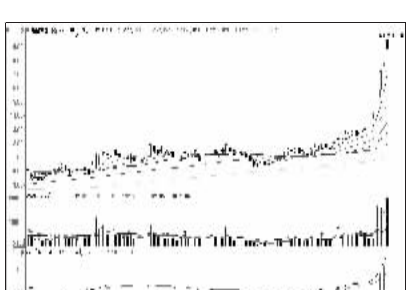
富临精工 (800432):新股,暂且持有



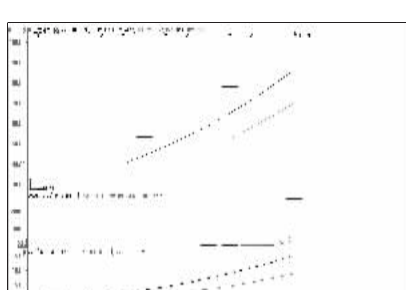
华泰证券 (601688):高位震荡,观望为主



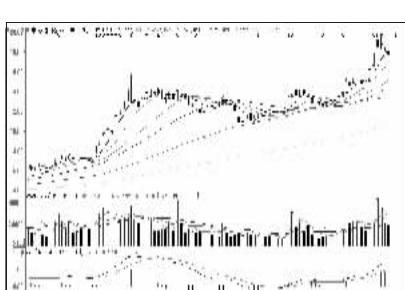
柯利达 (603828):强势格局,暂且持有



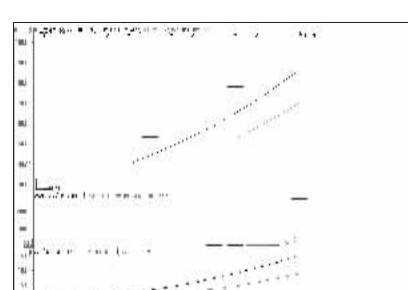
新疆城建 (600545):浮盈可观,落袋为安



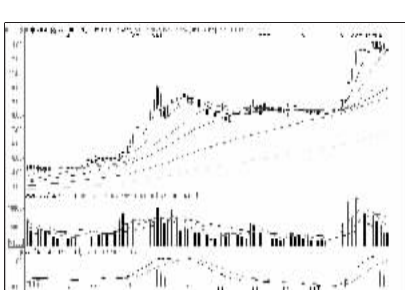
蓝思科技 (800433):高位放量,逐步止盈



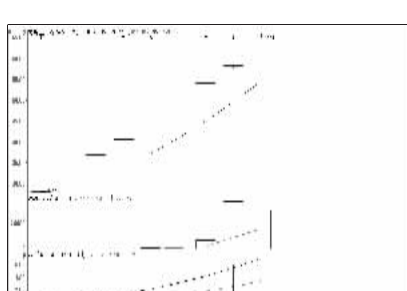
中国交建 (601800):止升回落,高抛为主



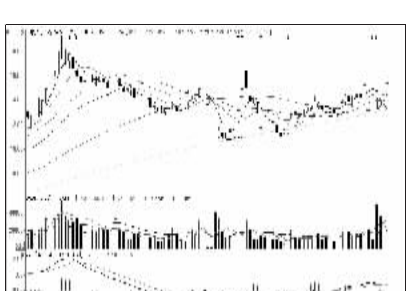
蓝思科技 (800433):高位放量,逐步止盈



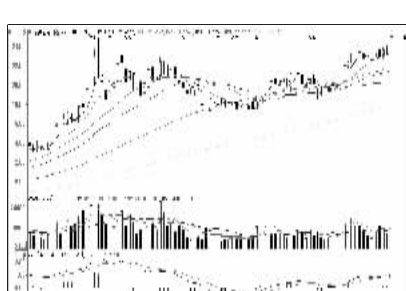
中国中铁 (601390):止升回落,不跟为主



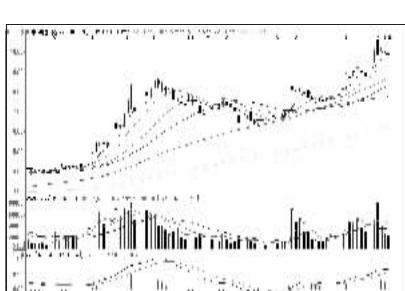
龙津药业 (002750):换手加快,逐步止盈



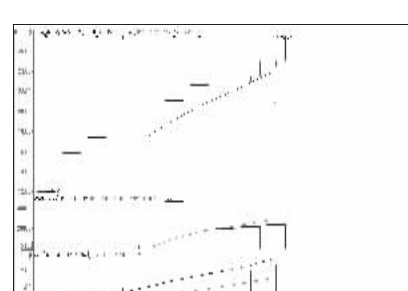
山水文化 (600234):涨势良好,介入为主



东吴证券 (601555):上行趋势,持有为主



中国电建 (601669):止升回落,高抛为主



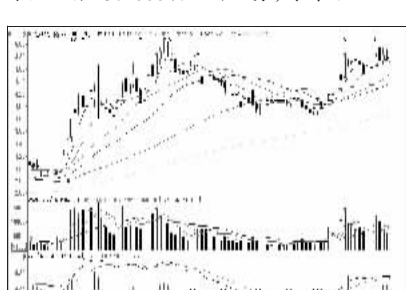
东方证券 (600958):新股,暂且持有



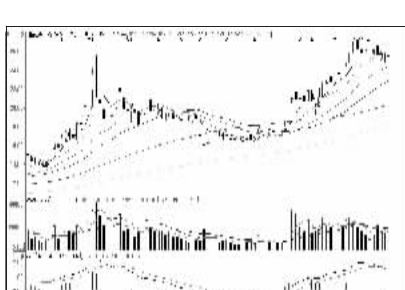
节能风电 (601016):加速上涨,持有为主



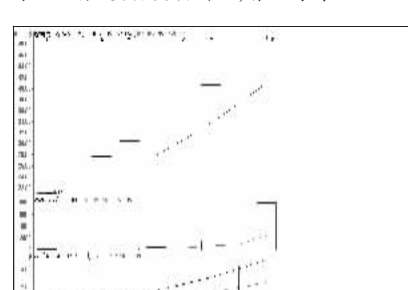
嘉化能源 (600273):有望维持上升趋势



光大银行 (601818):高位震荡,观望为主



国金证券 (600109):短线回调,观望为主



强力新材 (800429):新股,继续持有



看股票 买彩票  
全搞定  
大智慧手机版  
d.wapgw.cn