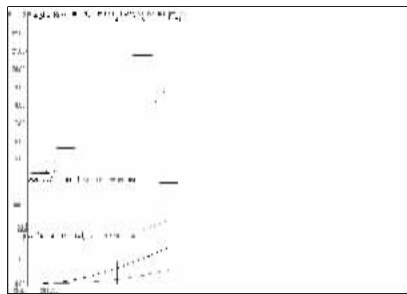


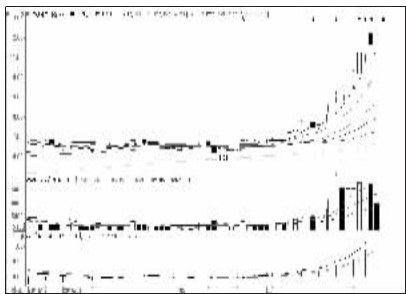
## 股东人数增减前10

股东人数减少前10

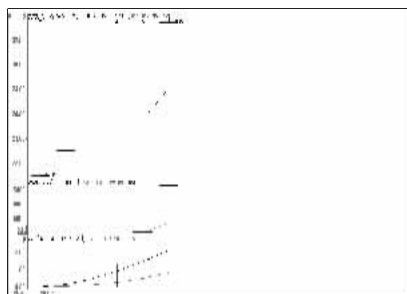


全筑股份 (603030):放量,逐步兑现

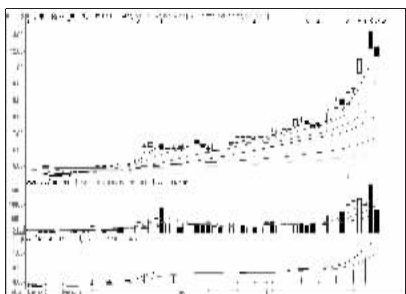
股东人数增加前10



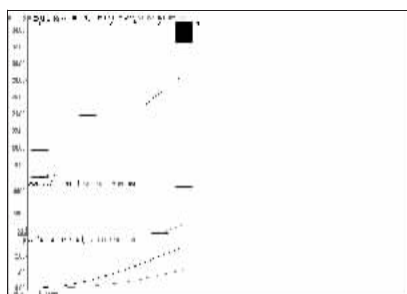
保税科技 (600794):调整未完,短线回避



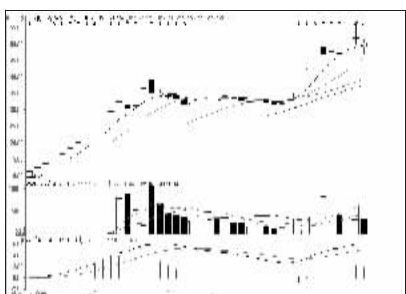
腾龙股份 (603158):放量,逐步兑现



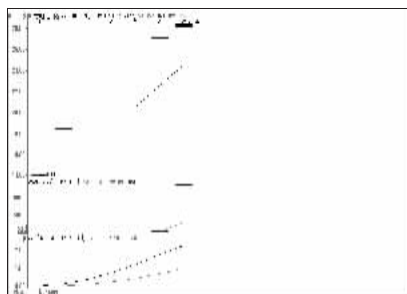
澳洋顺昌 (002245):仍需整固,观望为宜



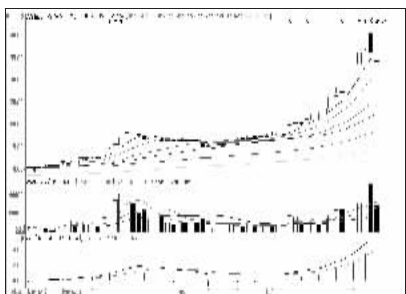
立霸股份 (603519):放量滞涨,落袋为安



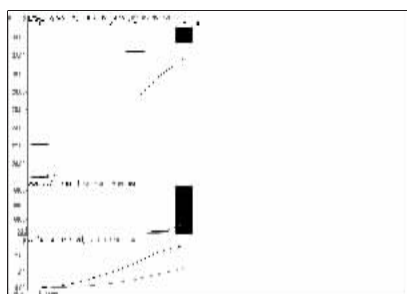
再升科技 (603601):震荡,观望



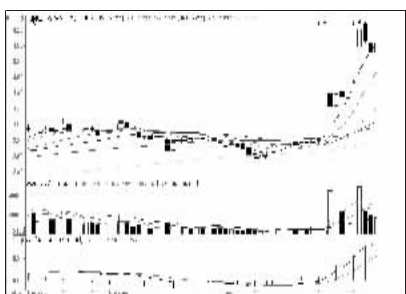
松发股份 (603268):攻势趋弱,落袋为安



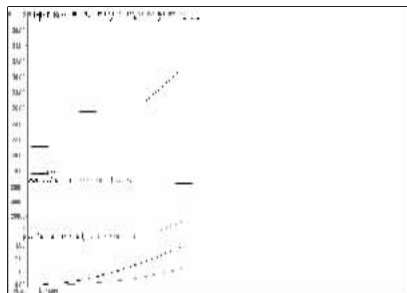
沃华医药 (002107):中期向好,短线需整固



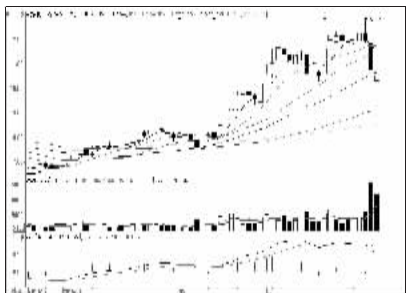
世龙实业 (002748):放量下跌,出局观望



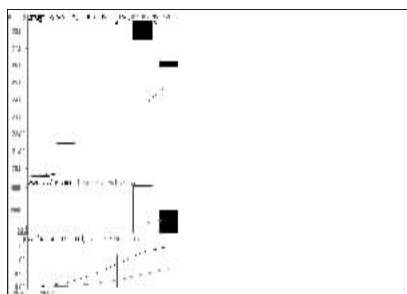
山鹰纸业 (600567):短期涨幅较大,观望



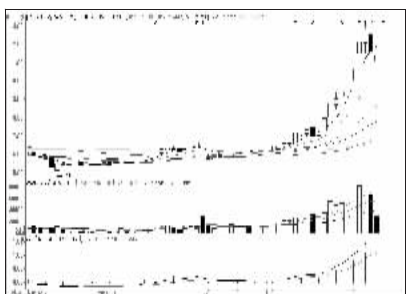
四通新材 (800428):放量,逐步兑现



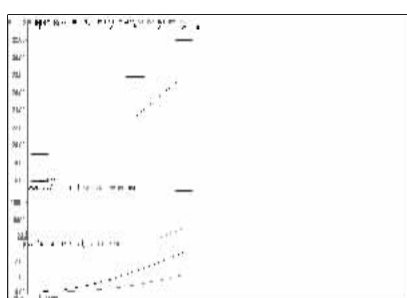
吉鑫科技 (601218):短线趋弱,离场观望



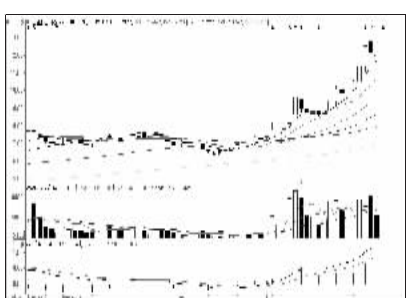
创力集团 (603012):难言止跌,观望为主



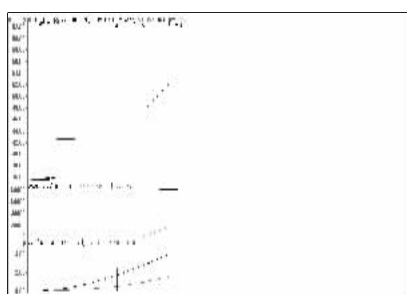
群兴玩具 (002575):仍有向下空间,回避



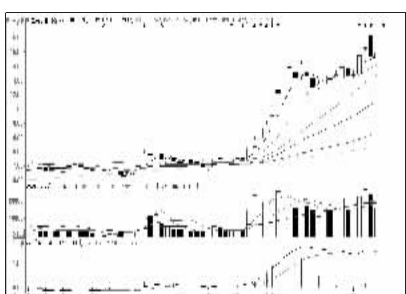
恒通科技 (800374):攻势趋弱,落袋为安



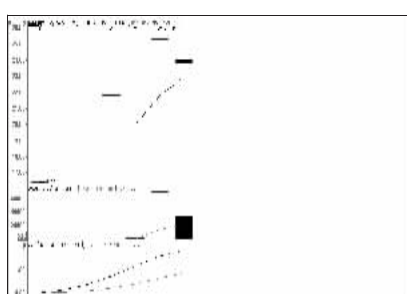
佳隆股份 (002495):短线趋弱,减仓观望



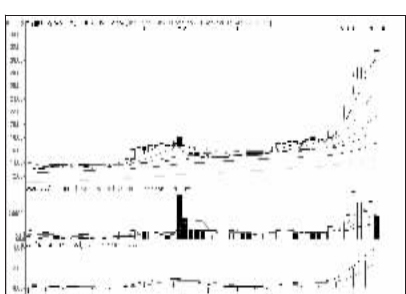
国光股份 (002749):放量,逐步兑现



盛屯矿业 (600711):整理蓄势,持股



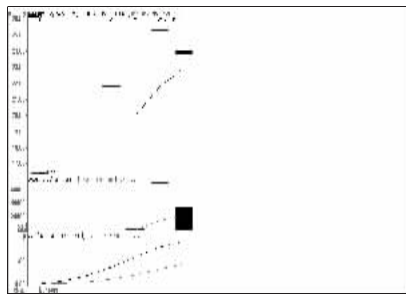
拓普集团 (601689):震荡,观望



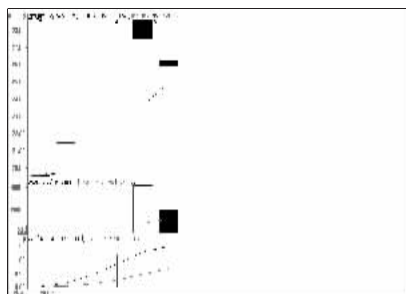
华东重机 (002685):攻势趋弱,减仓观望

## 一周资金流入流出金额前10

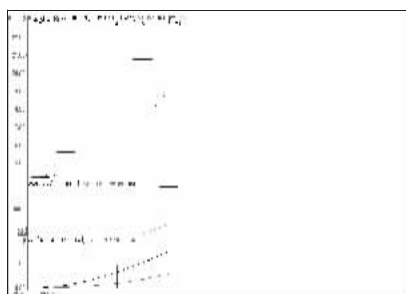
资金流入金额前10



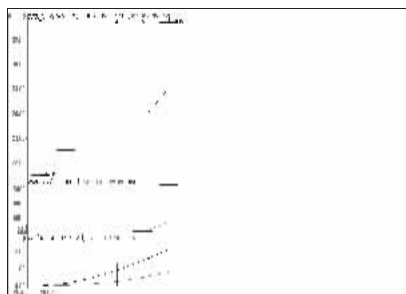
拓普集团 (601689):震荡,观望



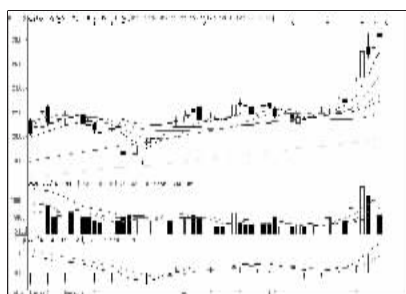
创力集团 (603012):难言止跌,观望为主



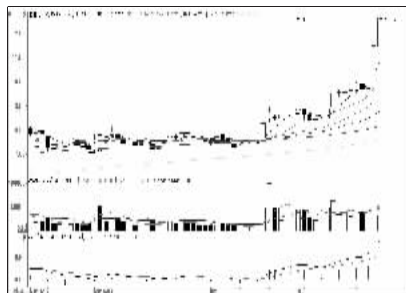
全筑股份 (603030):放量,逐步兑现



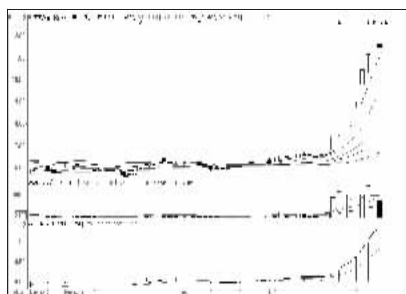
腾龙股份 (603158):放量,逐步兑现



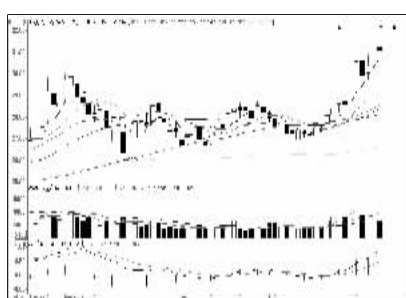
辽宁成大 (600739):多头形态,持股



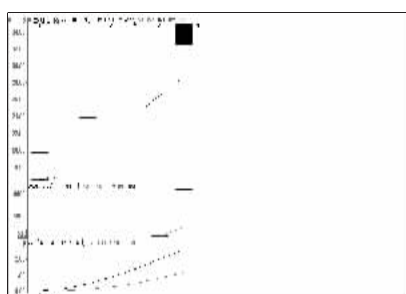
健康元 (600380):强势格局,持股



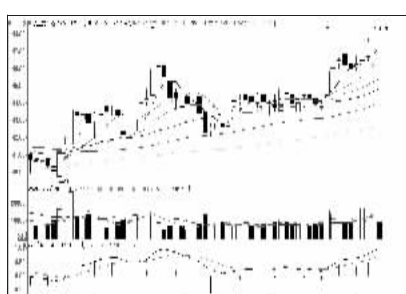
青岛双星 (000599):中期向好,逢低加仓



伊利股份 (600887):多头格局,持股

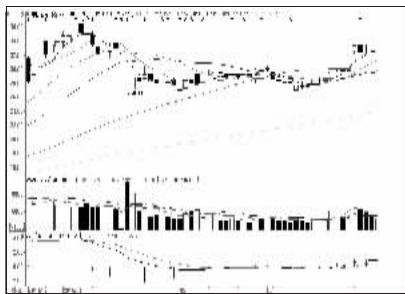


立霸股份 (603519):放量滞涨,落袋为安

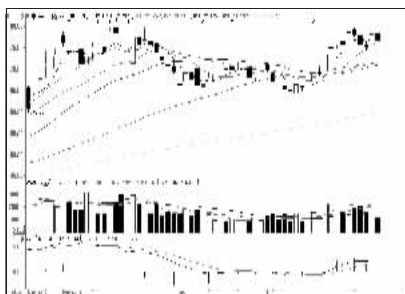


天士力 (600535):上升形态,持股

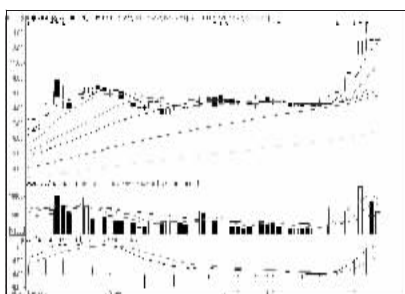
资金流出金额前10



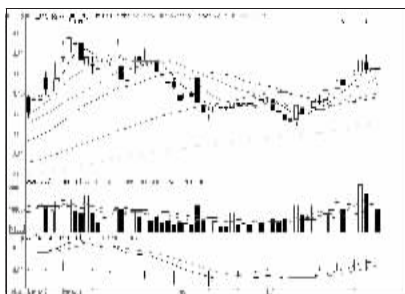
中信证券 (600030):上涨格局,持股为主



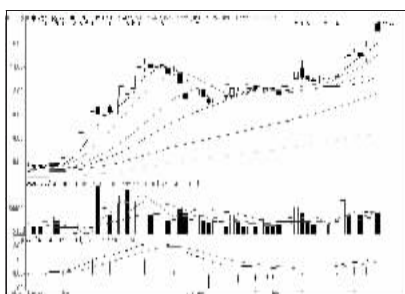
中国平安 (601318):中期向好,逢低介入



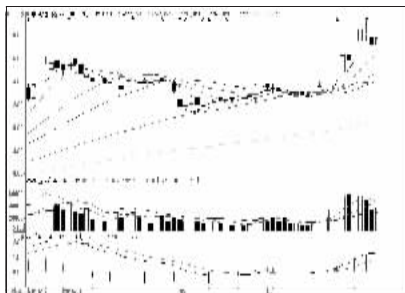
中国中铁 (601390):强势格局,低吸



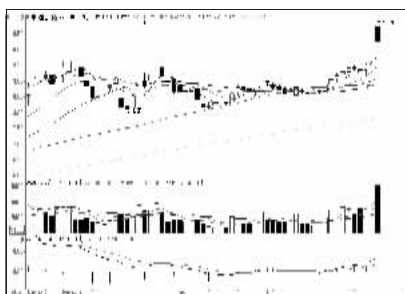
农业银行 (601288):短线承压,中线持股



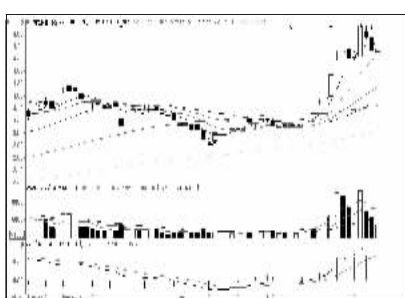
中国南车 (601766):压力新增,减仓观望



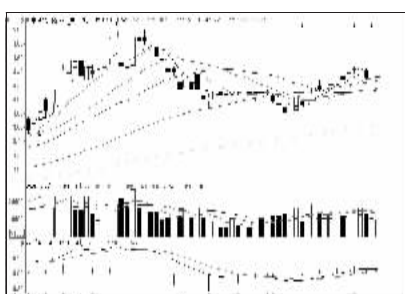
中国铁建 (601186):中期向好,逢低介入



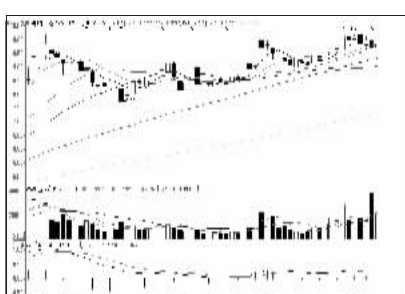
中国重工 (601989):攻势趋弱,减仓观望



海南航空 (600221):上升形态,低吸



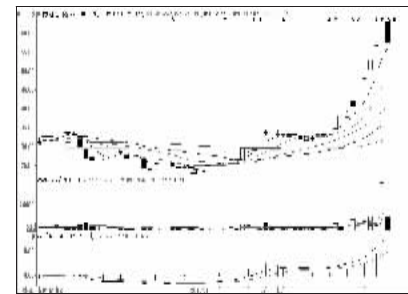
中国银行 (601988):蓄势整理,低吸



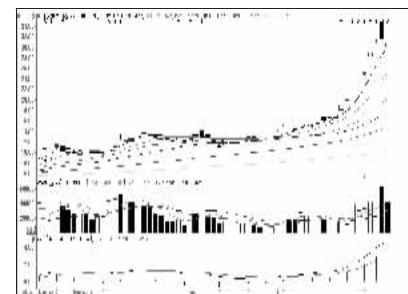
葛洲坝 (600068):多头格局,持股

## 周成交金额

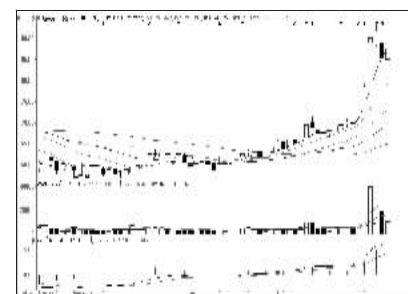
成交突增前10



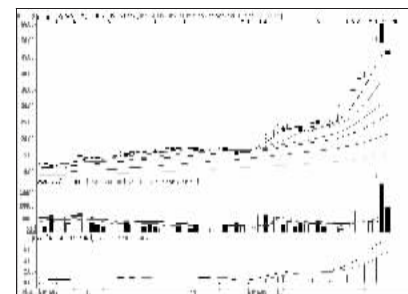
博腾股份 (800363):仍有向下空间,回避



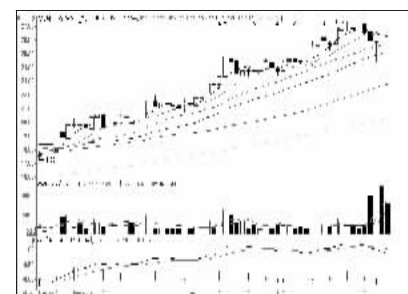
永大集团 (002622):高位放量,离场观望



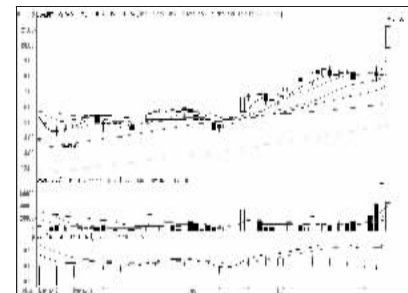
斯莱克 (800382):强势特征,跟进



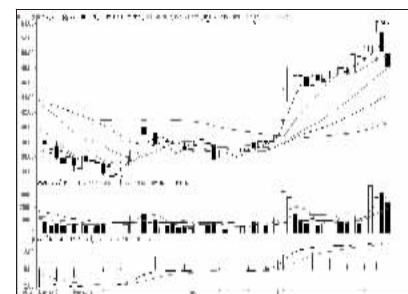
新开普 (800248):放量下跌,出局回避



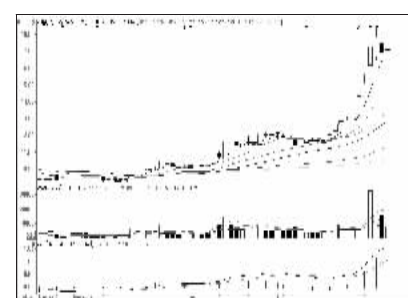
飞马国际 (002210):放量滞涨,谨慎持股



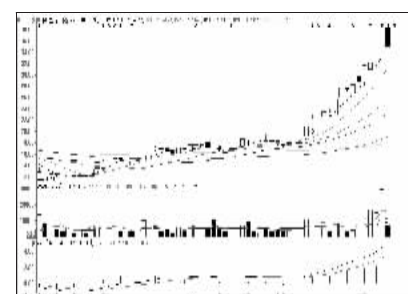
汉商集团 (600774):强势格局,逢低加仓



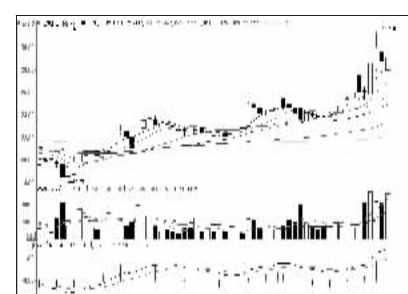
好利来 (002729):短线趋弱,减仓



永高股份 (002641):买盘下降,观望为主

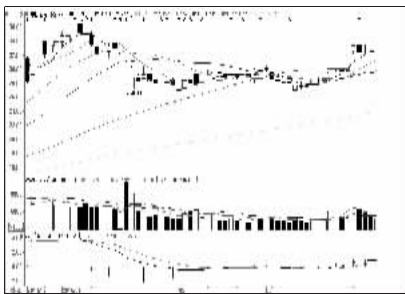


伊立浦 (002260):仍有向下空间,回避

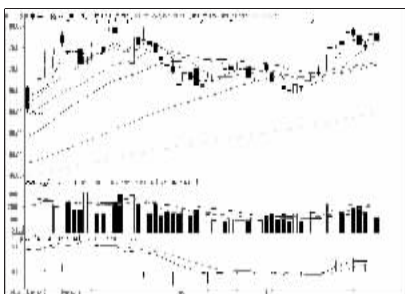


宏发股份 (600835):强势格局,跟进

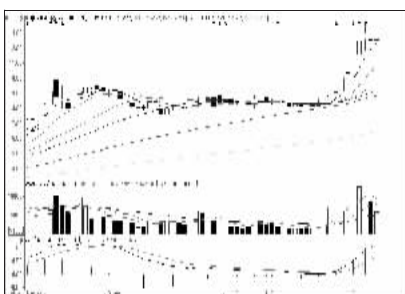
成交金额前8



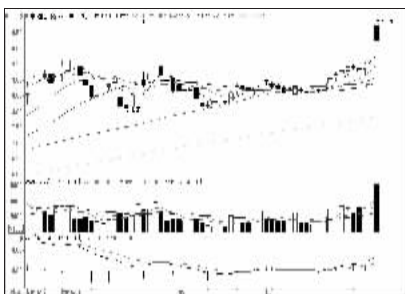
中信证券 (600030):上涨格局,持股为主



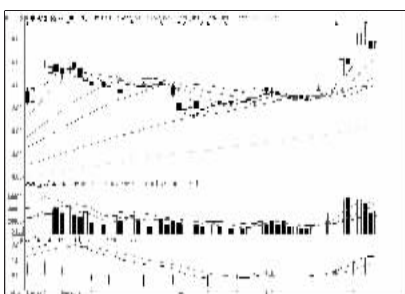
中国平安 (601318):中期向好,逢低介入



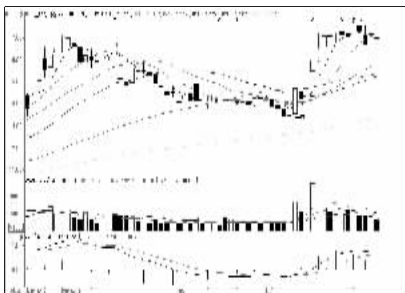
中国中铁 (601390):强势格局,低吸



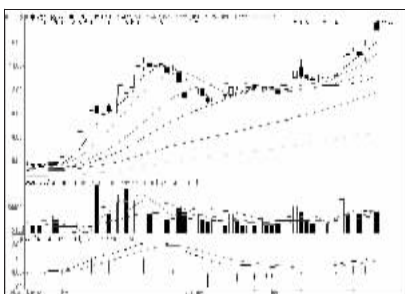
中国重工 (601989):攻势趋弱,减仓观望



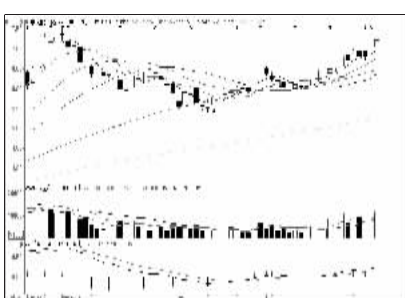
中国铁建 (601186):中期向好,逢低介入



兴业银行 (601166):仍需整固,观望



中国南车 (601766):压力新增,减仓观望



中国建筑 (601668):多头格局,低吸



看股票 买彩票  
全搞定  
大智慧手机版  
d.wapgw.cn