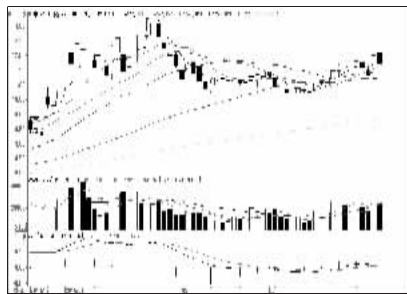


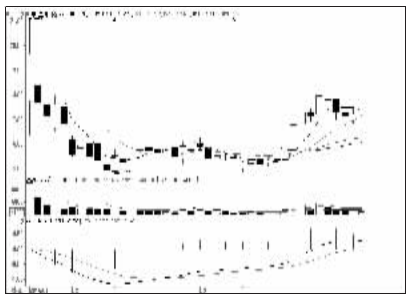
沪深10大权重股

沪市10大权重



中国石油 (601857): 空间有限, 观望为宜

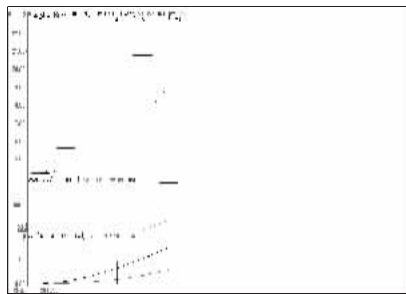
深市10大权重



中万宏源 (000166): 短线承压, 观望

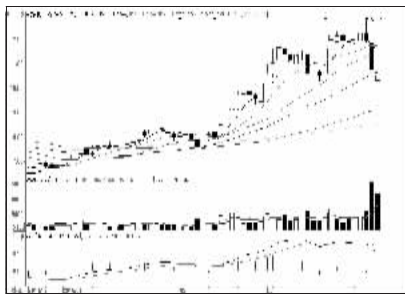
周涨跌幅前10

涨幅前10



全筑股份 (603030): 放量, 逐步兑现

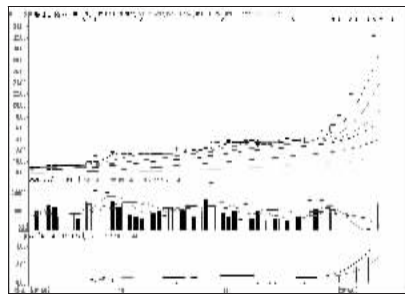
跌幅前10



吉鑫科技 (601218): 短线趋弱, 离场观望

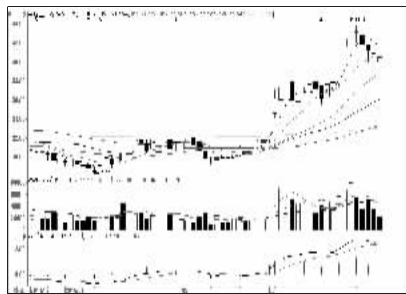
连续涨跌前10

连涨前10

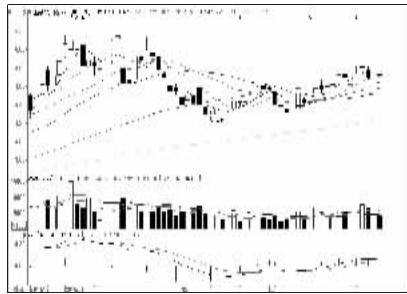


新研股份 (800159): 压力渐增, 不宜追涨

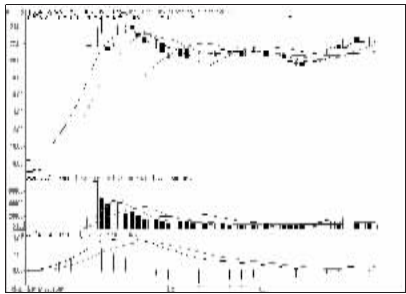
连跌前10



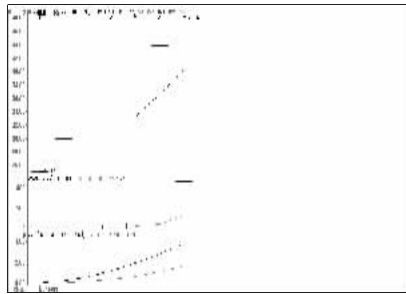
莱美药业 (800006): 多头格局, 逢低关注



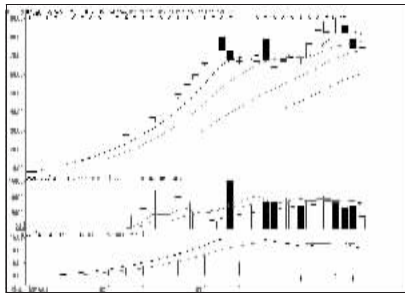
工商银行 (601398): 中期向好, 持股为主



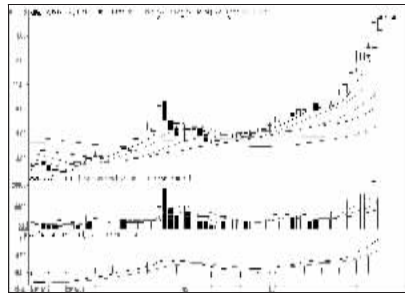
国信证券 (002736): 高位蓄势, 持股为主



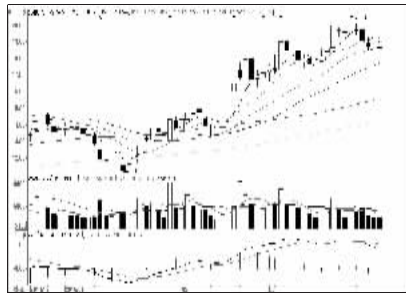
诚益通 (600430): 一字涨停, 持有



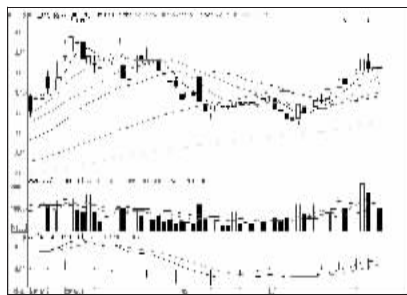
中文在线 (800364): 高位回调, 观望为主



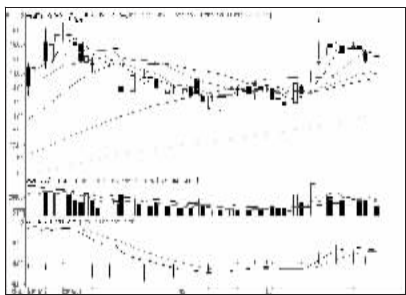
大橡塑 (600346): 上涨格局, 加仓



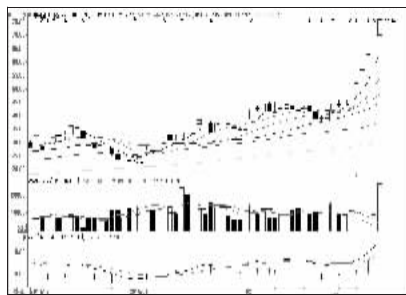
爱建股份 (600643): 短线趋弱, 减仓



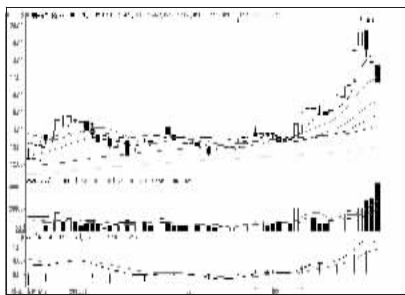
农业银行 (601288): 短线承压, 中线持股



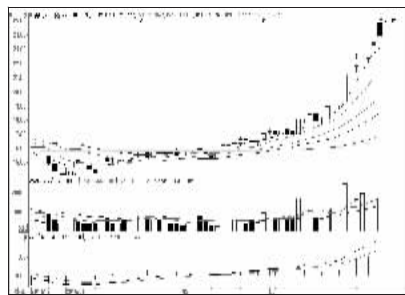
平安银行 (000001): 前高遇阻, 中线持股



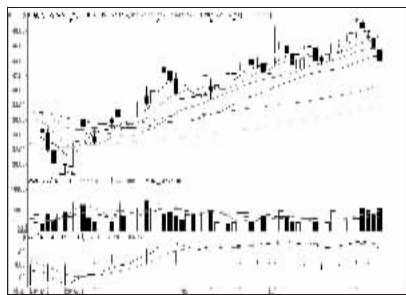
中科金财 (002657): 高位天量, 落袋为安



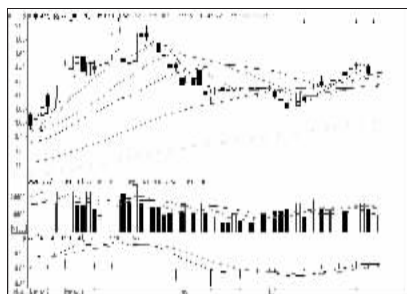
中央商场 (600280): 放量下跌, 观望



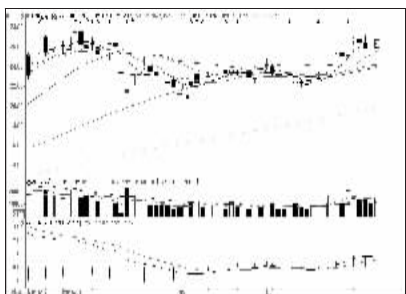
英威腾 (002334): 均线良好, 持股



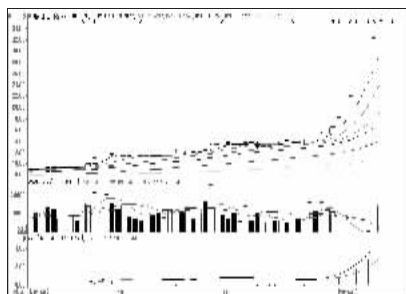
丹甫股份 (002366): 走势趋弱, 离场



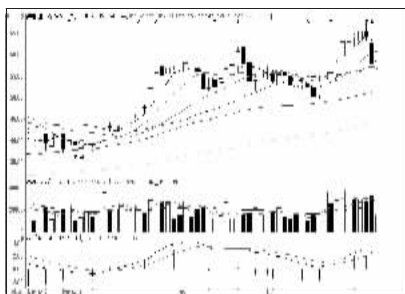
中国银行 (601988): 蓄势整理, 低吸



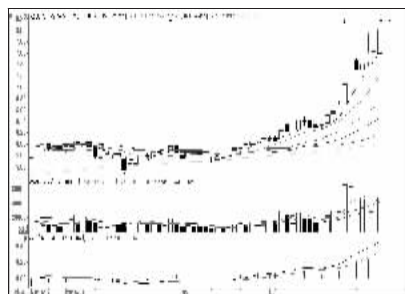
广发证券 (000776): 多头格局, 低吸



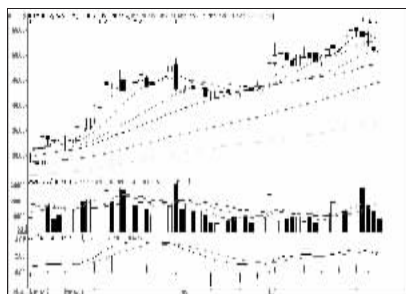
新研股份 (800159): 压力渐增, 不宜追涨



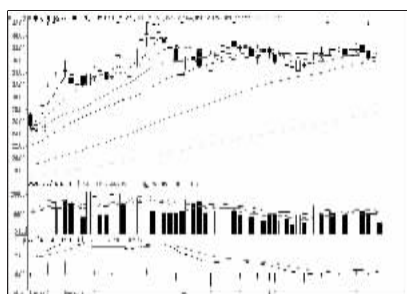
初灵信息 (800250): 中期形态尚好, 持股



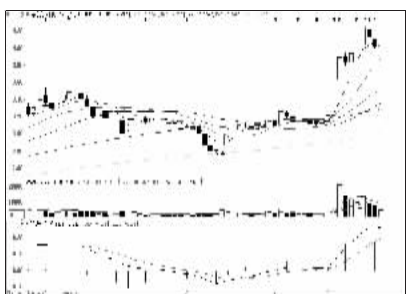
天药股份 (600488): 多头格局, 跟进



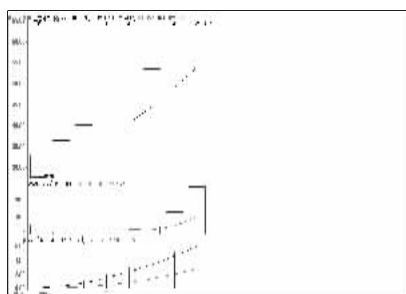
中国软件 (600536): 仍有调整空间, 回避



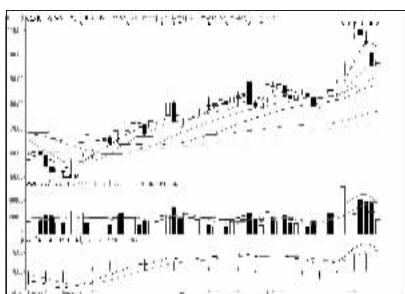
中国人寿 (601628): 窄幅整理, 持股为主



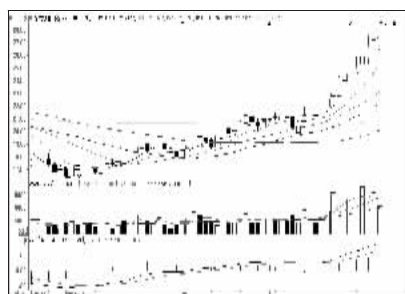
京东方A (000725): 短线整理, 中期看好



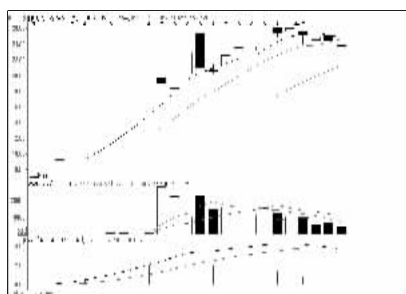
蓝思科技 (800433): 继续持有, 关注量能



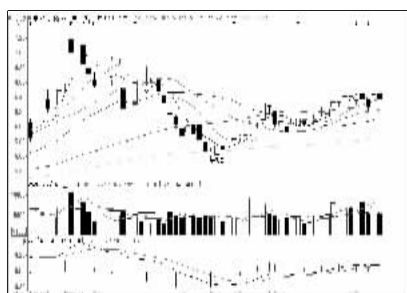
绿盟科技 (800369): 仍需整固, 暂时回避



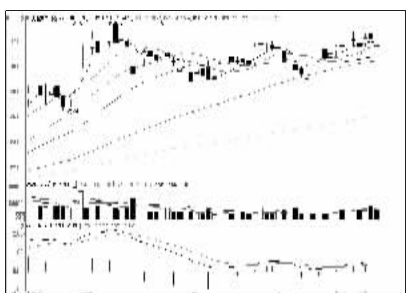
华力创通 (800045): 上升形态, 逢低加仓



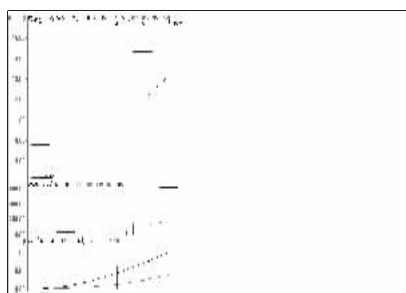
仙坛股份 (002746): 或进入阶段盘整



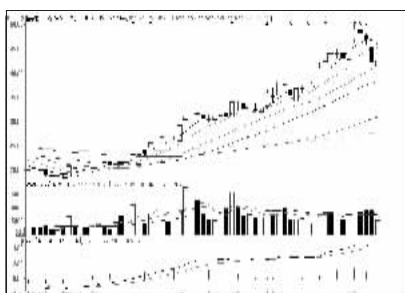
中国石化 (600028): 多头格局, 低吸持股



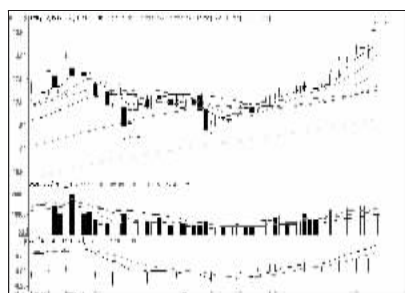
美的集团 (000333): 中期向好, 逢低吸纳



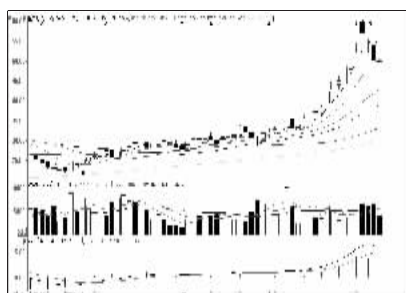
埃斯顿 (002747): 继续持有, 关注量能



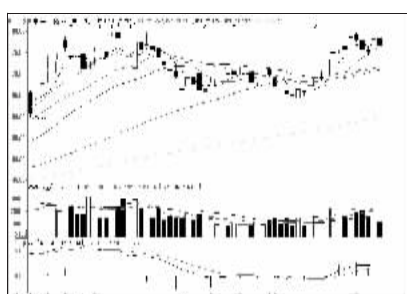
拓尔思 (800229): 有望进入阶段盘整



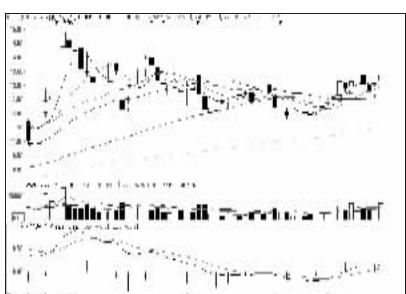
伊力特 (600197): 上升形态, 持股待涨



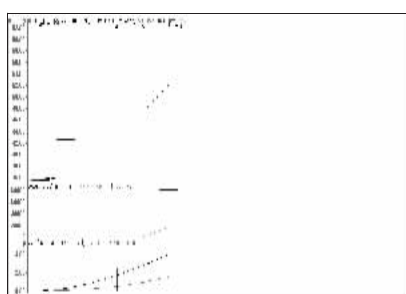
金固股份 (002488): 中期形态尚好, 持股



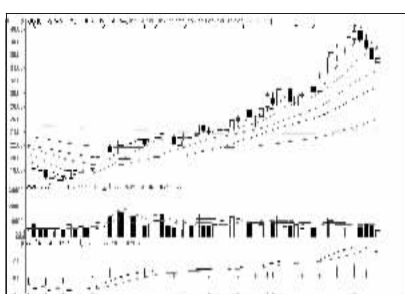
中国平安 (601318): 中期向好, 逢低介入



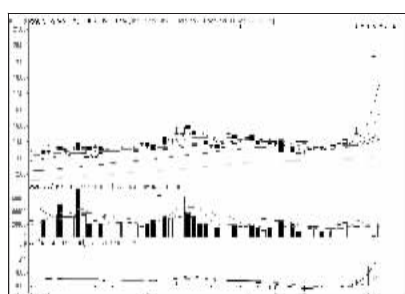
万科A (000002): 超升形态, 跟进



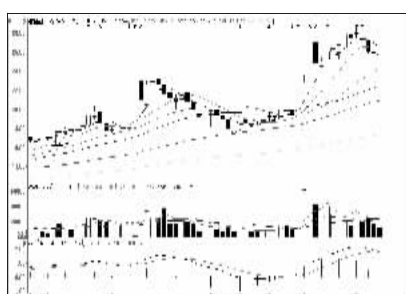
国光股份 (002749): 放量, 逐步兑现



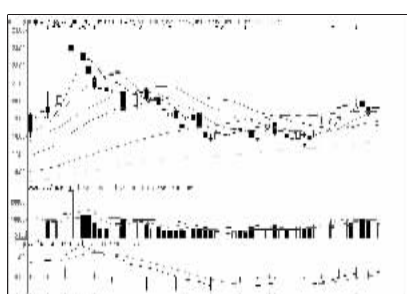
天玑科技 (800245): 中期向上形态, 低吸



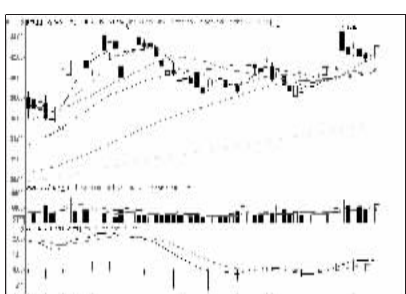
双钱股份 (600623): 卖方惜售, 持股



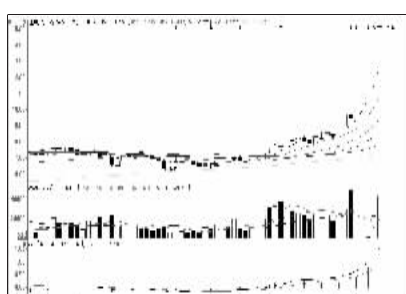
刚泰控股 (600687): 仍有后劲, 低吸



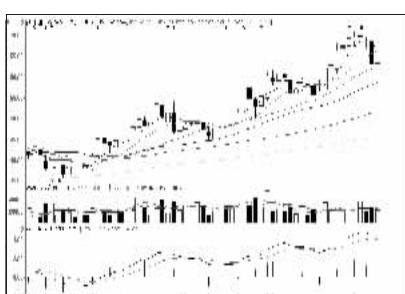
中国神华 (601088): 中期有走好迹象



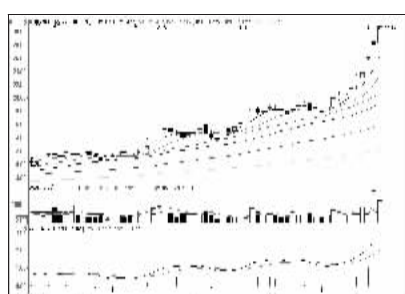
格力电器 (000651): 强势格局, 持股为主



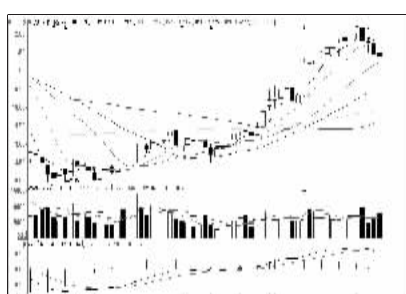
朗源股份 (800175): 量能放大, 持股不追



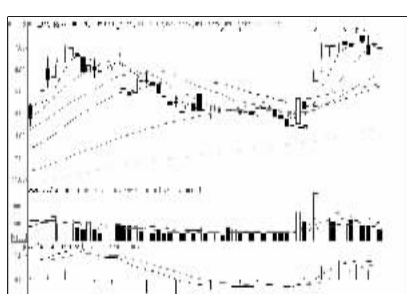
神州信息 (000555): 上升形态, 持股为主



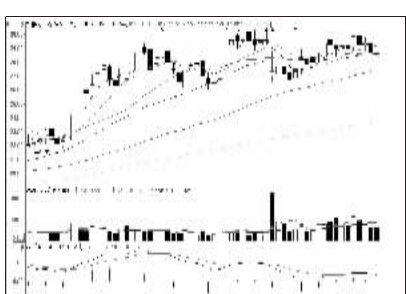
中天城投 (000540): 强势特征明显, 介入



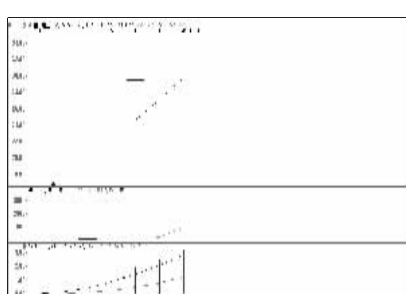
天晟新材 (800169): 攻势趋弱, 观望



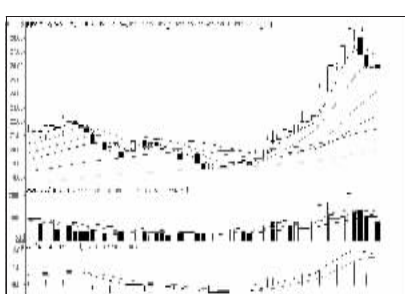
兴业银行 (601166): 仍需整固, 观望



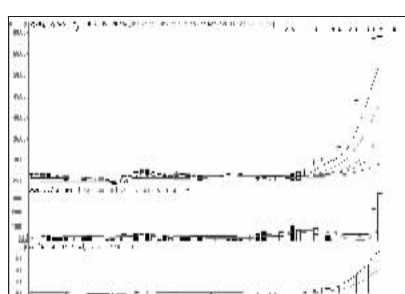
海康威视 (002415): 空间有限, 高抛



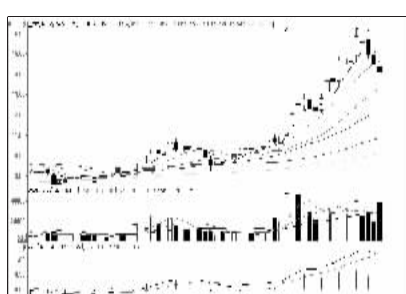
富临精工 (800432): 继续持有, 关注量能



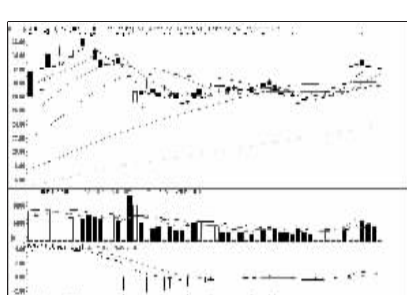
青青稞酒 (002646): 买气减弱, 短线离场



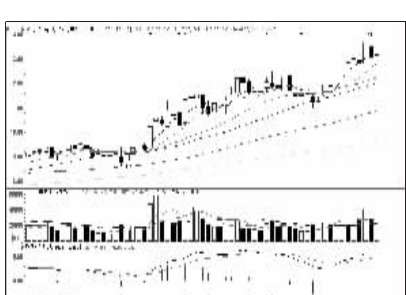
宋城演艺 (800144): 高位放量, 落袋为安



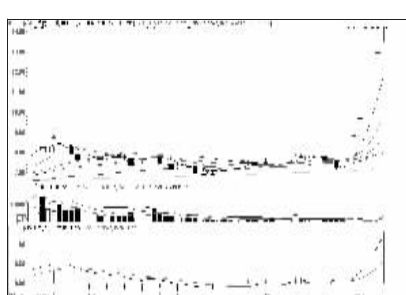
上海九百 (600838): 中期向好, 短线回避



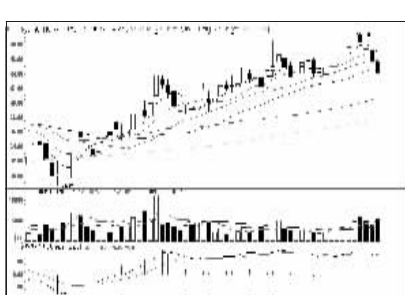
中信证券 (600030): 上涨格局, 持股为主



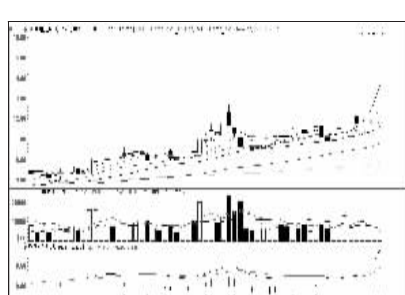
苏宁云商 (002024): 形态良好, 谨慎持股



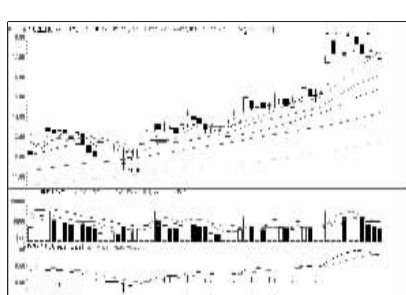
深华发A (000020): 量能放大, 持股不追



丹甫股份 (002366): 走势趋弱, 离场观望



西藏旅游 (600749): 一字涨停, 继续持股



东方创业 (600278): 高位回调, 逢低关注