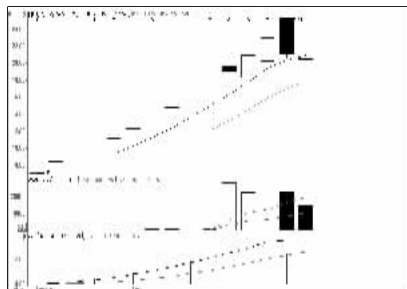


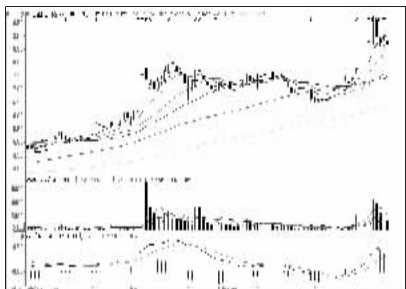
股东人数增减前10

股东人数减少前10



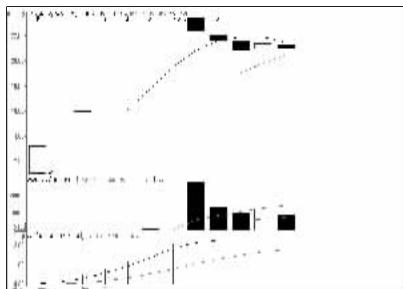
仙坛股份 (002746): 仍有调整空间, 回避

股东人数增加前10



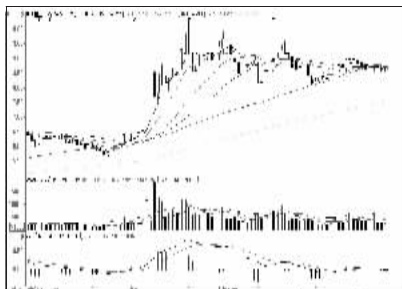
佳隆股份 (002495): 走势趋弱, 离场观望

资金流入金额前10



东兴证券 (601198): 震荡蓄势, 暂时观望

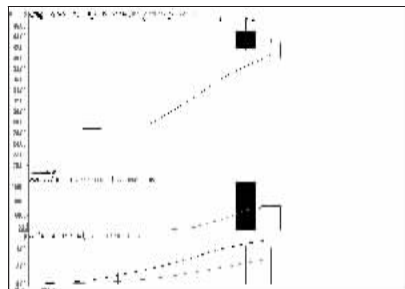
资金流出金额前10



中国重工 (601989): 窄幅整理, 观望为主

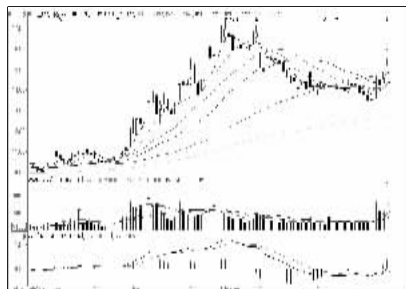
周成交金额

成交突增前10

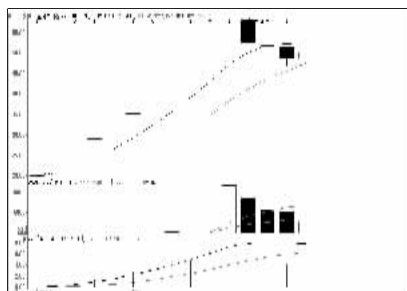


维力医疗 (603309): 新股震荡, 谨慎持股

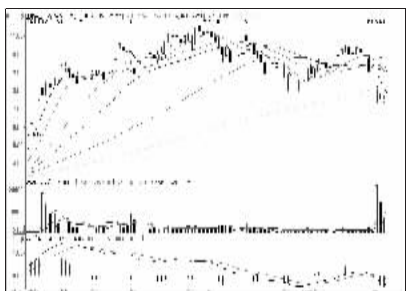
成交金额前8



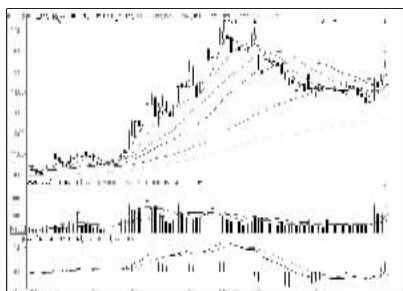
兴业银行 (601166): 前高遇阻, 暂不追涨



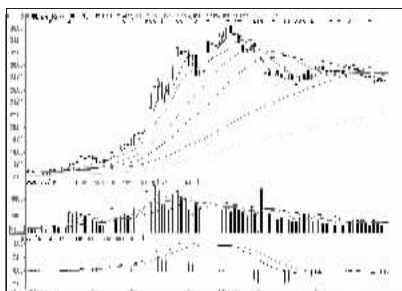
环能科技 (800425): 难言企稳, 观望



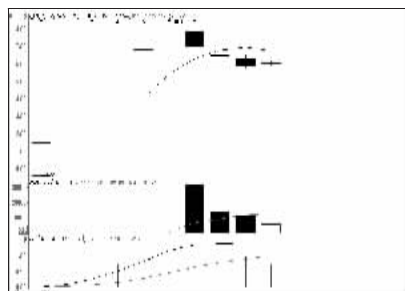
江泉实业 (600212): 仍需稳固, 观望



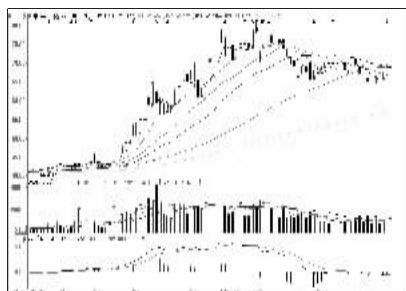
兴业银行 (601166): 前高遇阻, 暂不追涨



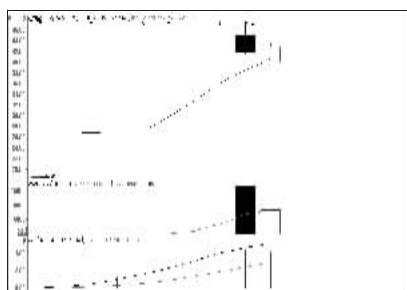
中信证券 (600030): 整理格局, 观望为宜



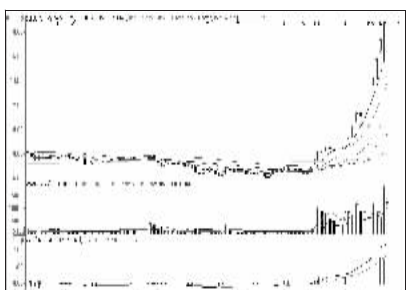
继峰股份 (603997): 新股震荡, 观望为主



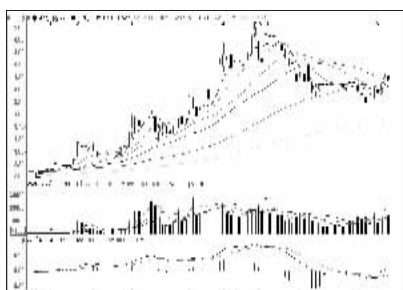
中国平安 (601318): 短线承压, 中期看好



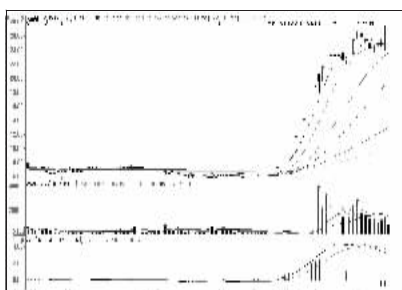
维力医疗 (603309): 新股震荡, 谨慎持股



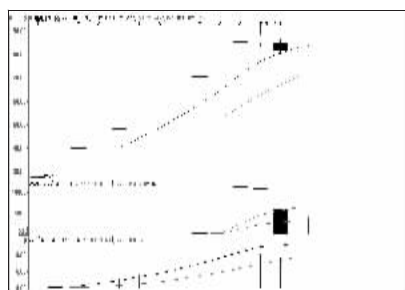
爱使股份 (600652): 多头形态, 逢低关注



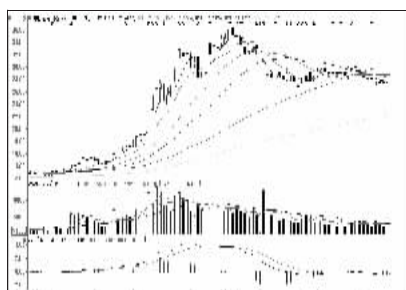
中国银行 (601988): 震荡向上, 持股



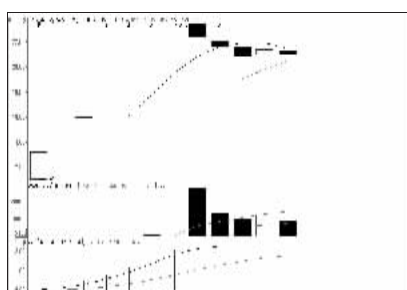
大智慧 (601519): 平台整理, 观望为主



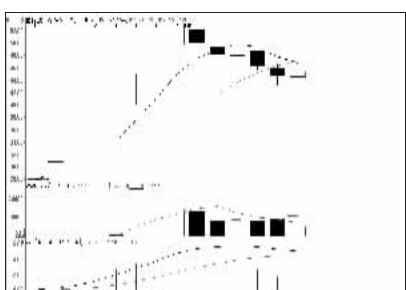
唐德影视 (800426): 新股震荡, 观望为主



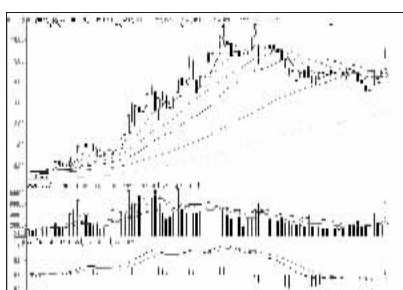
中信证券 (600030): 整理格局, 观望为宜



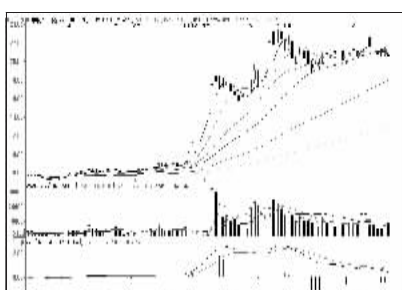
东兴证券 (601198): 震荡蓄势, 暂时观望



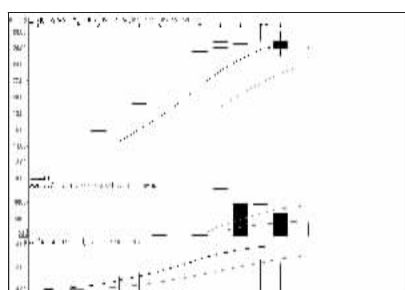
益丰药房 (603939): 仍需稳固, 观望为主



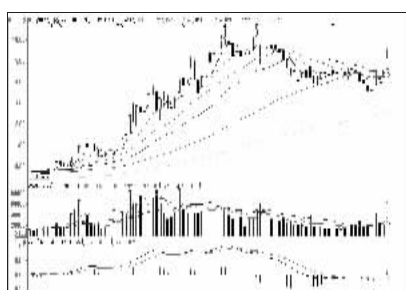
浦发银行 (600000): 多头行情, 持股为主



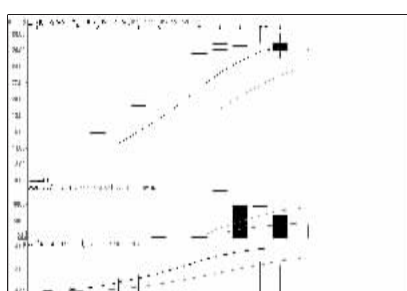
中航资本 (600705): 整理充分, 低吸



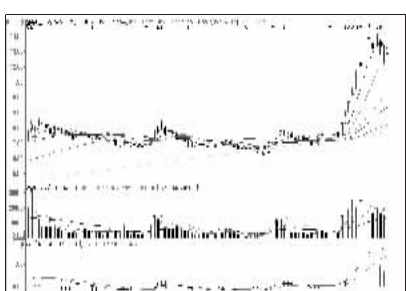
五洋科技 (800420): 新股震荡, 观望为主



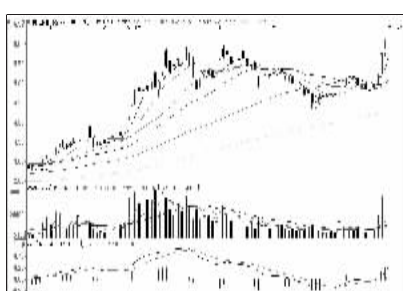
浦发银行 (600000): 多头行情, 持股为主



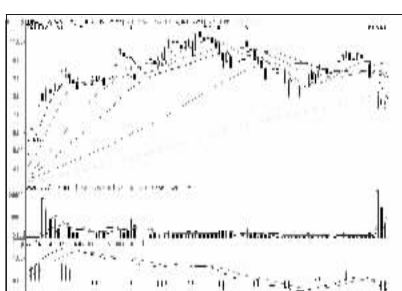
五洋科技 (800420): 新股震荡, 观望为主



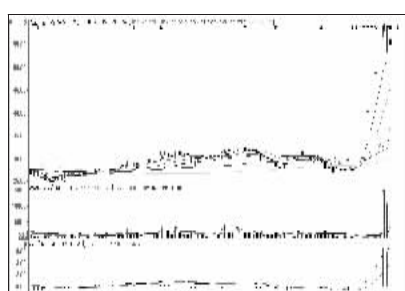
盛屯矿业 (600711): 强势格局, 逢低介入



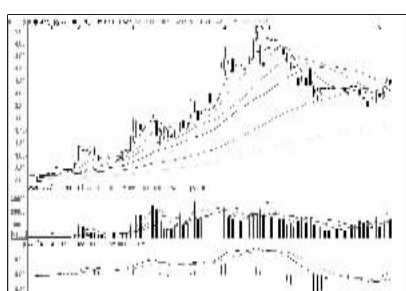
南方航空 (600029): 强势拉抬, 跟进



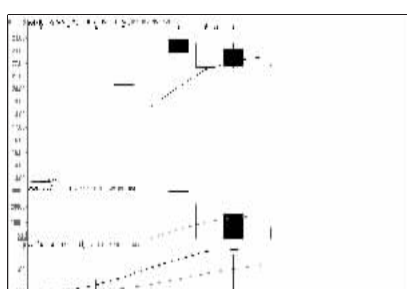
江泉实业 (600212): 仍需稳固, 观望



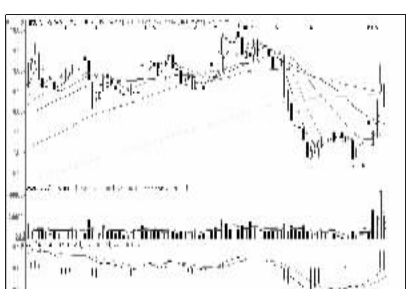
联创节能 (800343): 高位放量, 落袋为安



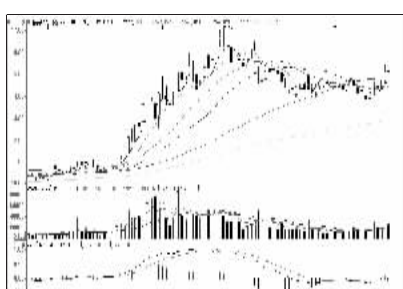
中国银行 (601988): 震荡向上, 持股



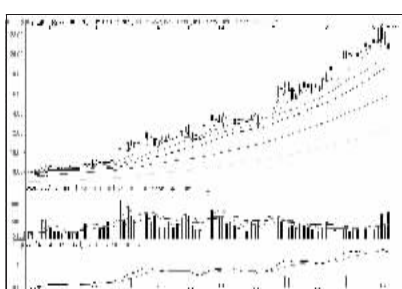
弘讯科技 (603015): 新股震荡, 观望为主



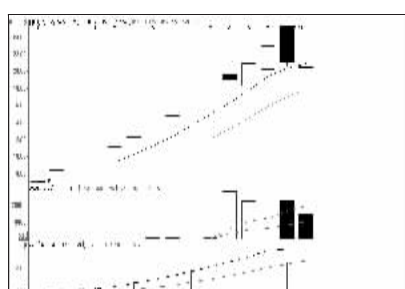
国发股份 (600538): 有望重拾升势, 关注



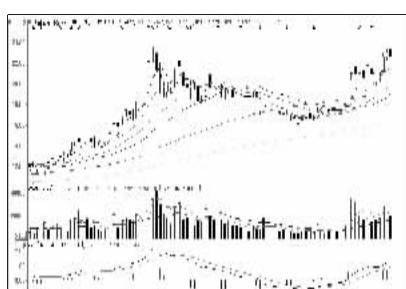
招商银行 (600036): 买气提升, 持股为主



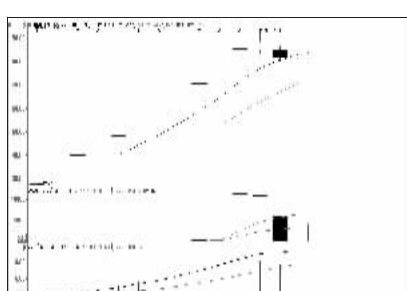
张江高科 (600895): 涨幅较大, 适当兑现



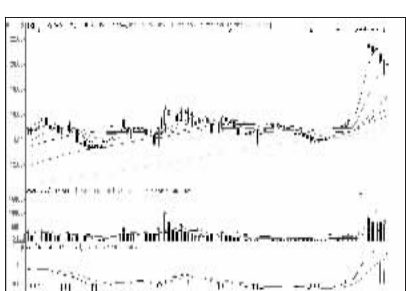
仙坛股份 (002746): 仍有调整空间, 回避



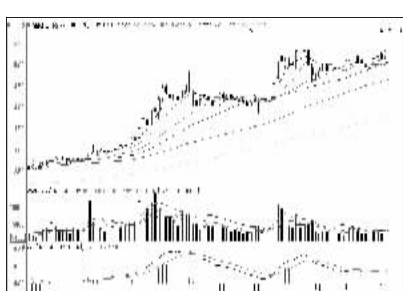
国金证券 (600109): 偏强震荡, 持股



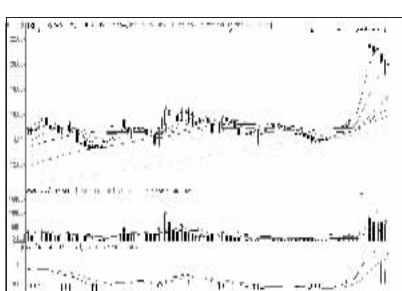
唐德影视 (800426): 新股震荡, 观望为主



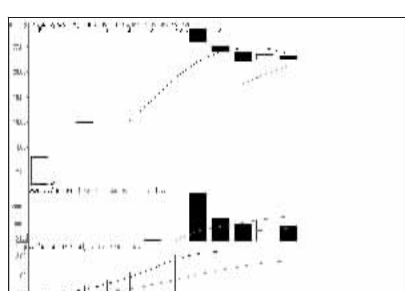
菲达环保 (600526): 短线趋弱, 减仓观望



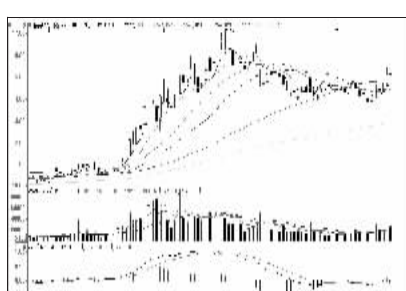
包钢股份 (600010): 价升量增, 看高一线



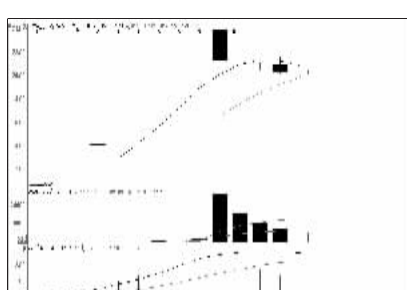
菲达环保 (600526): 短线趋弱, 减仓观望



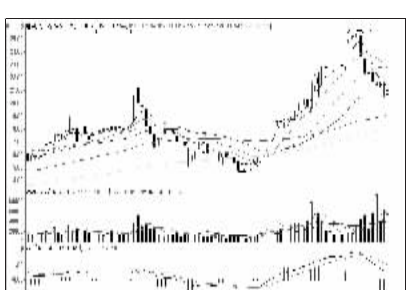
东兴证券 (601198): 震荡蓄势, 暂时观望



招商银行 (600036): 买气提升, 持股为主



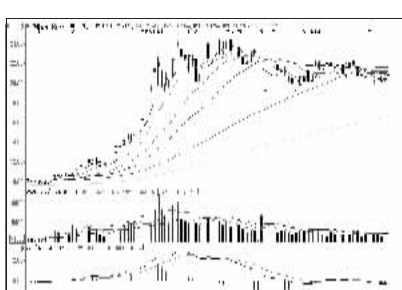
济民制药 (603222): 向下空间有限, 关注



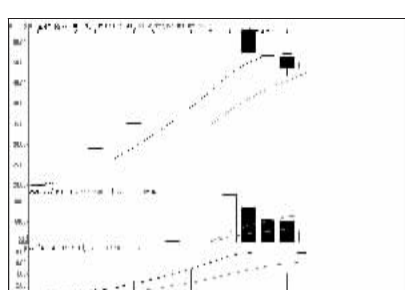
顺威股份 (002676): 形态变差, 离场



光大银行 (601818): 买气提升, 持股为主



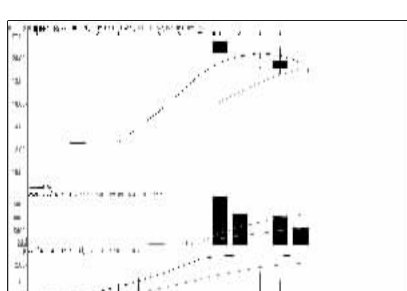
海通证券 (600837): 震荡格局, 观望为主



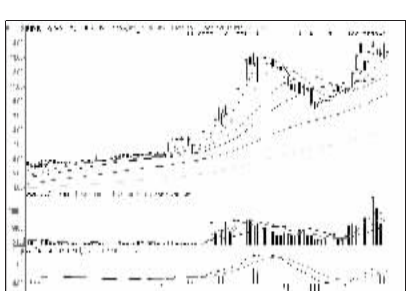
环能科技 (800425): 难言企稳, 观望



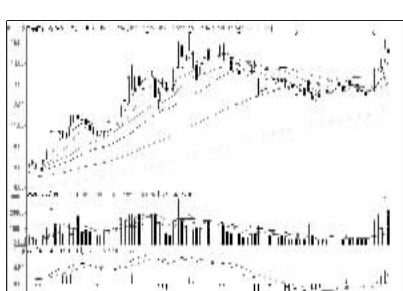
民生银行 (600016): 走势偏弱, 换股操作



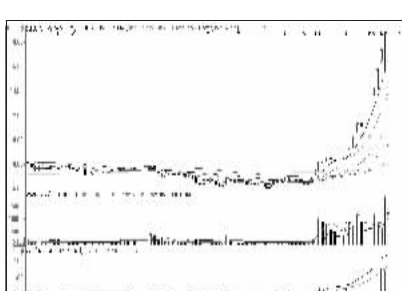
富煌钢构 (002743): 尚未企稳, 观望



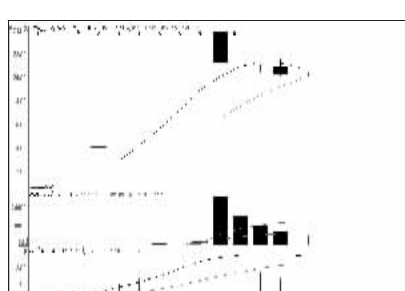
赛象科技 (002337): 平台整理, 观望为主



南京银行 (601009): 挑战前高, 逢低关注



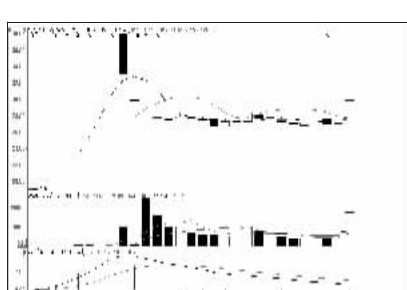
爱使股份 (600652): 多头形态, 逢低关注



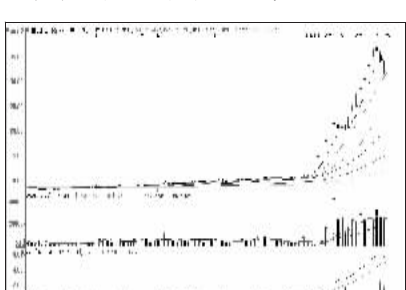
济民制药 (603222): 向下空间有限, 关注



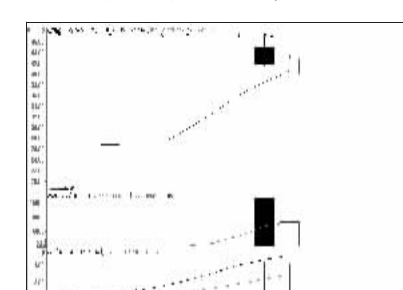
富煌钢构 (002743): 尚未企稳, 观望



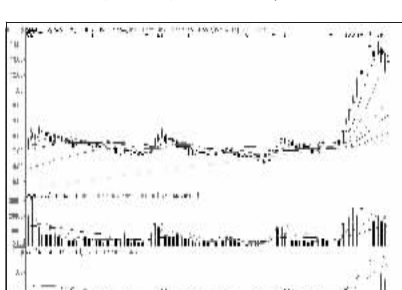
晨光文具 (603899): 拉抬明显, 跟进



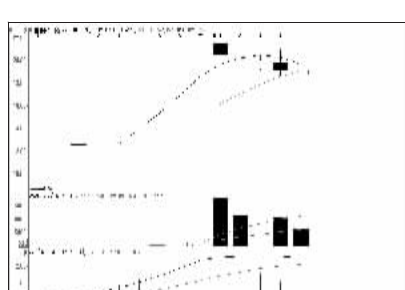
巢东股份 (600318): 高位回调, 暂时回避



维力医疗 (603309): 新股震荡, 谨慎持股



盛屯矿业 (600711): 强势格局, 逢低介入



富煌钢构 (002743): 尚未企稳, 观望



看股票 买彩票
全搞定
大智慧手机版
d.wapgw.cn