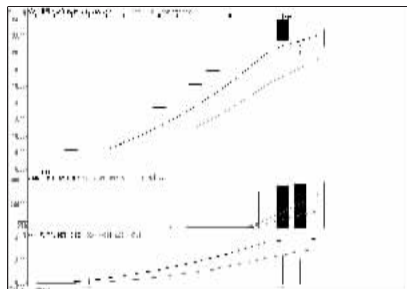


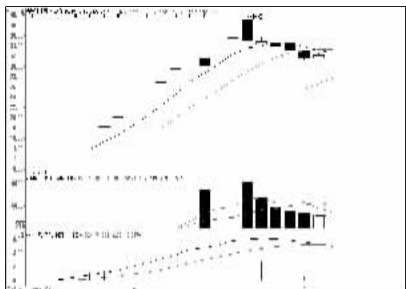
股东人数增减前10

股东人数减少前10



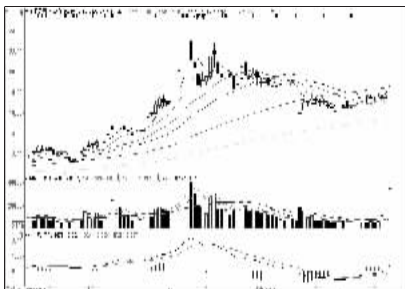
华友钴业 (603799): 买气趋弱, 落袋为安

股东人数增加前10



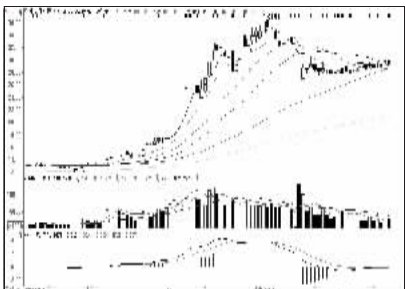
再升科技 (603601): 短线趋弱, 减仓观望

资金流入金额前10



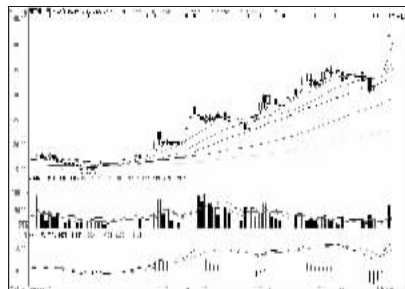
国金证券 (600109): 强势特征明显, 低吸

资金流出金额前10



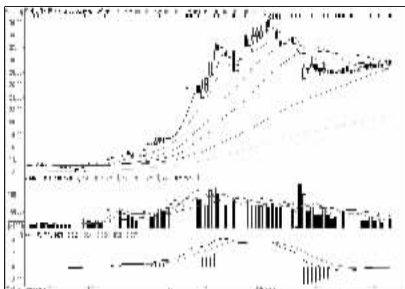
中信证券 (600030): 阻力较大, 暂不介入

成交突增前10

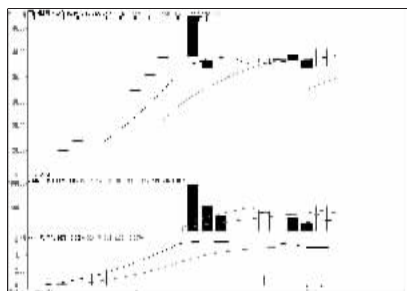


新开普 (600248): 上攻形态, 跟进

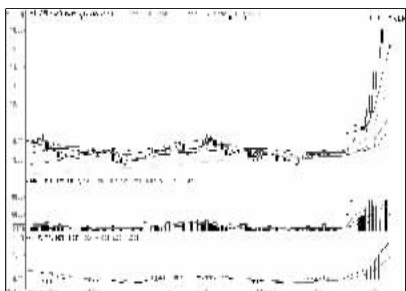
成交金额前8



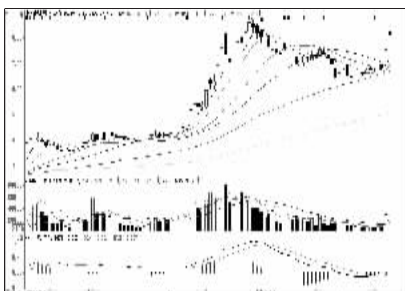
中信证券 (600030): 阻力较大, 暂不介入



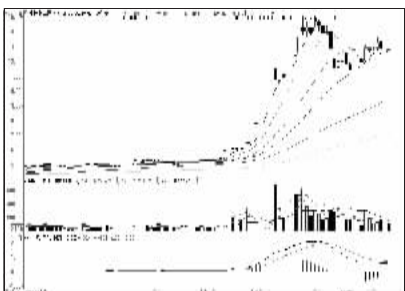
苏试试验 (800416): 买气减弱, 落袋为安



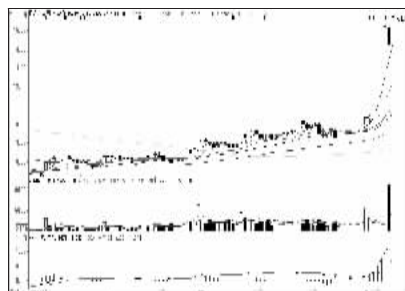
广电网络 (600831): 压力渐增, 持股不追



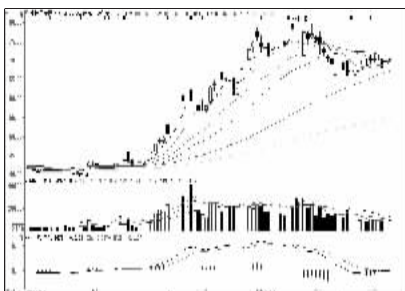
中国电建 (601669): 谨防回调, 持股不追



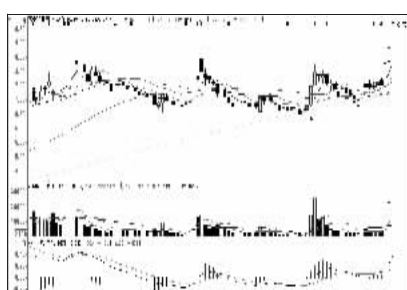
中国北车 (601299): 整理格局, 观望为宜



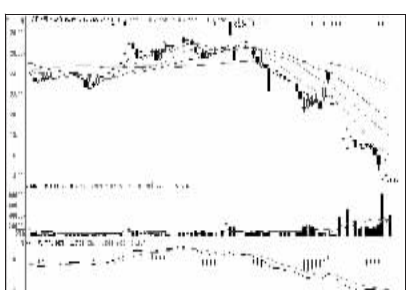
物产中大 (600704): 强势格局, 低吸



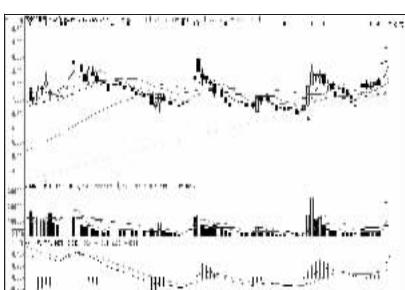
中国平安 (601318): 高位蓄势, 适当跟进



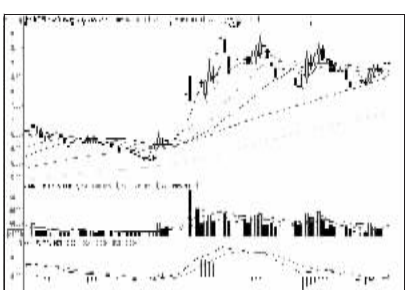
盛屯矿业 (600711): 攻势强劲, 看高一线



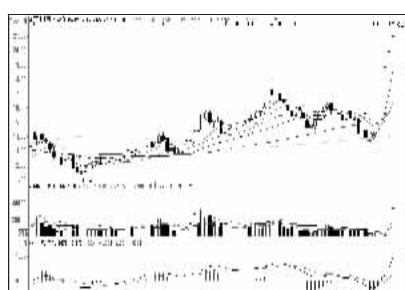
威华股份 (002240): 弱势难改, 回避



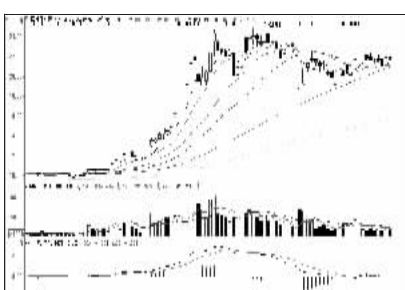
盛屯矿业 (600711): 攻势强劲, 看高一线



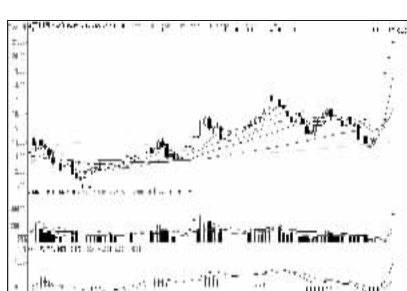
中国重工 (601989): 平台整理, 观望为主



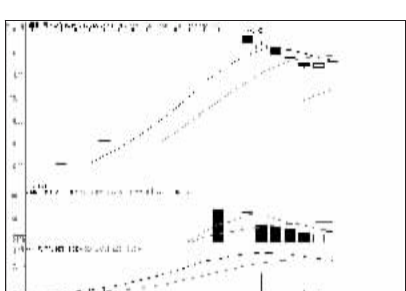
金亚科技 (600028): 强势拉升, 持股为主



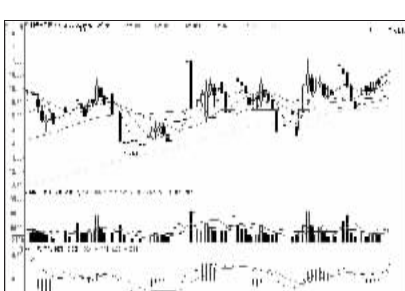
海通证券 (600837): 均线支持较强, 持股



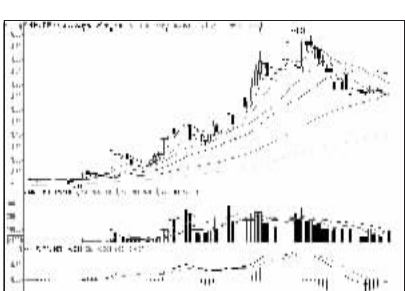
金亚科技 (600028): 强势拉升, 持股为主



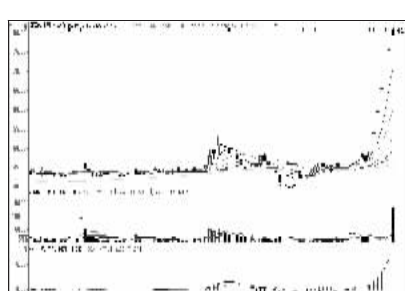
西部黄金 (601069): 上攻乏力, 落袋为安



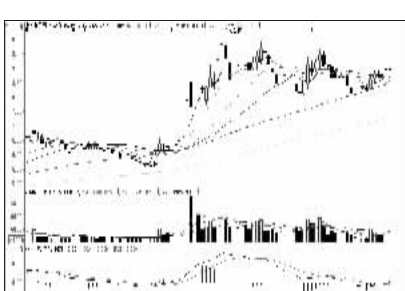
航天电子 (600879): 强势突破, 跟进为宜



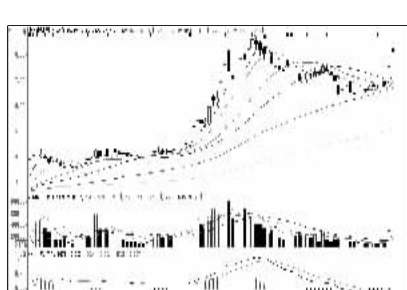
中国银行 (601988): 买盘不济, 减仓



海隆软件 (602195): 形态需整固, 观望



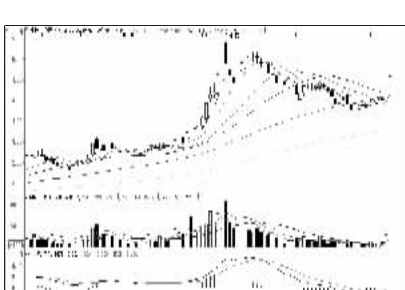
中国重工 (601989): 平台整理, 观望为主



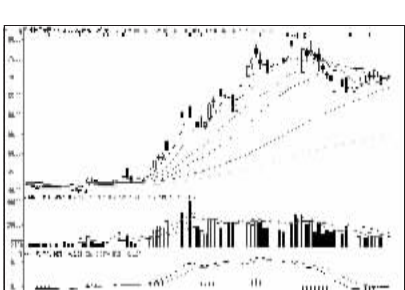
中国电建 (601669): 谨防回调, 持股不追



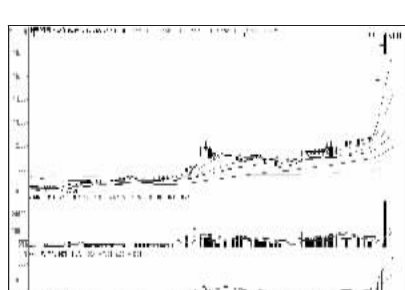
海润光伏 (600401): 短线止跌, 观望为主



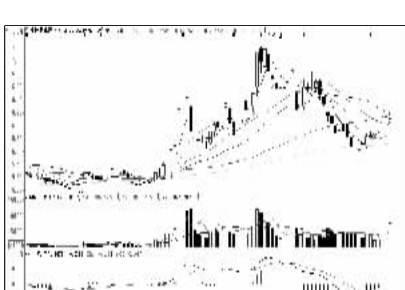
中国中冶 (601618): 谨防回调, 短线不追



中国平安 (601318): 高位蓄势, 适当跟进



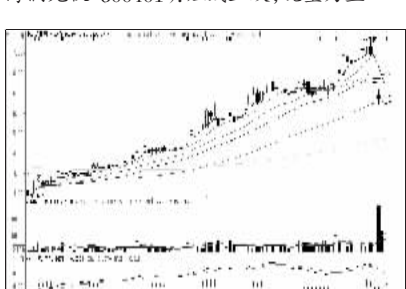
中原环保 (000544): 中期向上, 持股



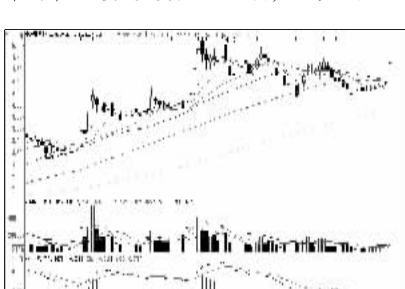
中国石化 (600028): 多头格局, 择机加仓



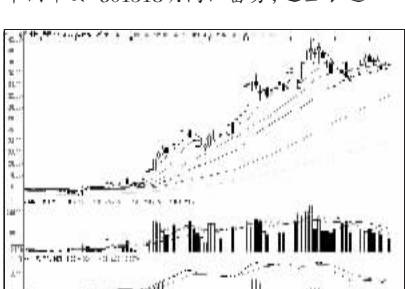
苏交科 (800284): 仍有向上空间, 持股



中润资源 (000506): 难言企稳, 回避



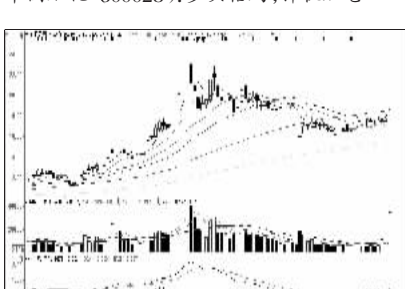
宁波港 (601018): 看高一线, 持股



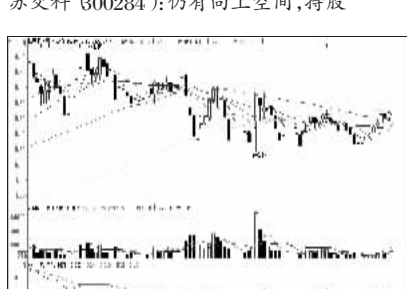
中国人寿 (601628): 平台整理, 观望为主



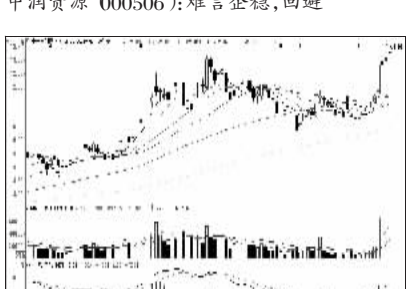
众合机电 (000925): 放量下跌, 择机出局



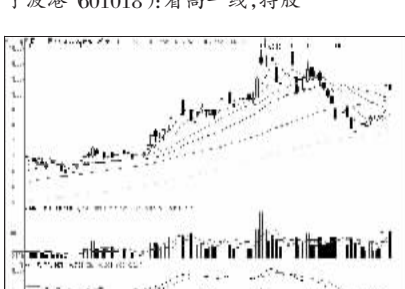
国金证券 (600109): 强势特征明显, 低吸



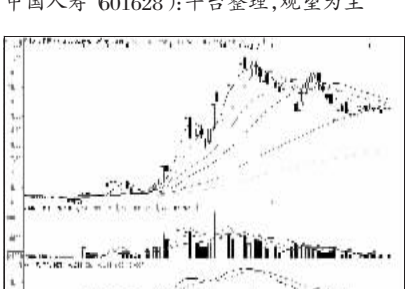
曙光股份 (600303): 攻势强劲, 看高一线



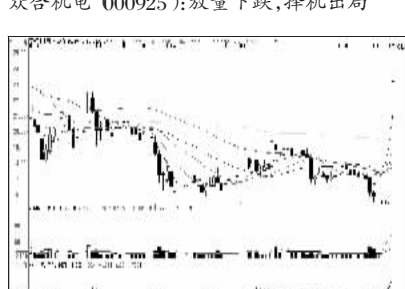
安徽水利 (600502): 攻势趋弱, 不宜追涨



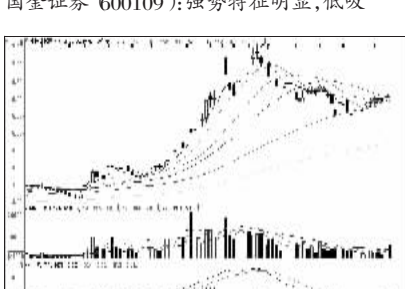
南山铝业 (600219): 上方压力大, 减仓



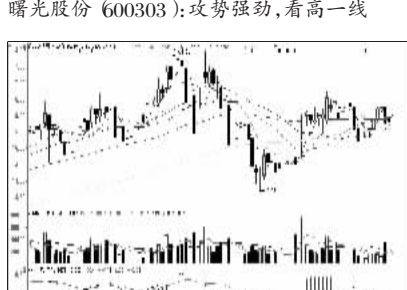
民生银行 (600016): 弱势盘整, 观望



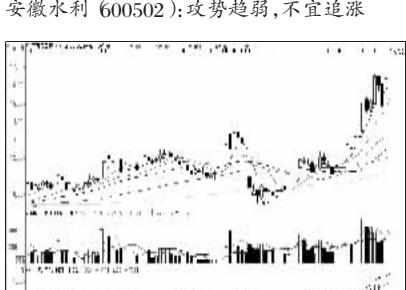
掌趣科技 (800315): 多头市道, 适当跟进



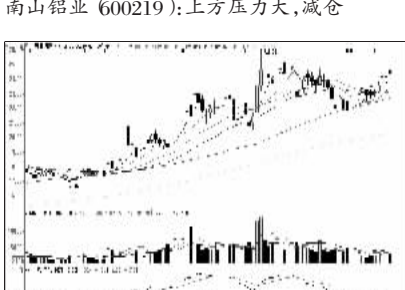
中国建筑 (601668): 多头市道, 持股



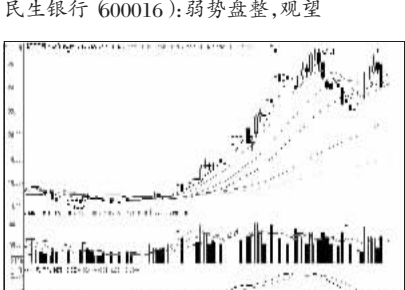
宜昌交运 (600627): 有望突破, 适当介入



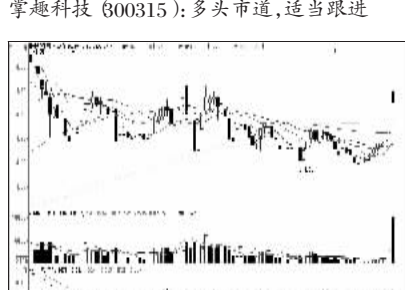
三五互联 (600051): 均线良好, 持股观望



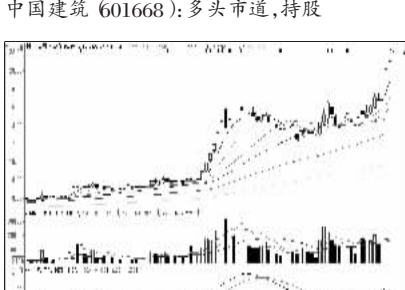
上汽集团 (600104): 多头格局, 择机加仓



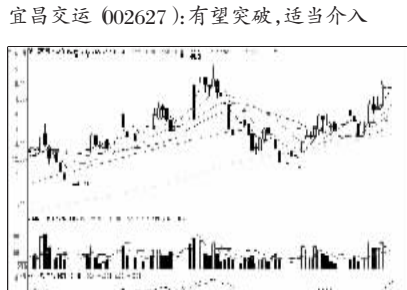
浙江龙盛 (600352): 买盘趋弱, 减仓为宜



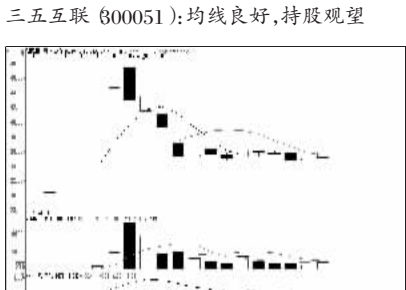
鲁丰环保 (002379): 看高一线, 低吸



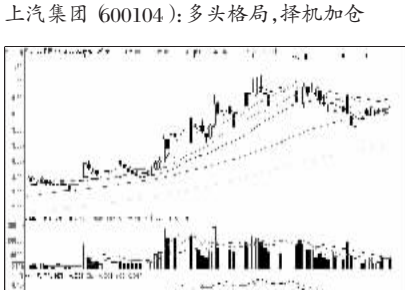
中铁二局 (600528): 攻势强劲, 择机跟进



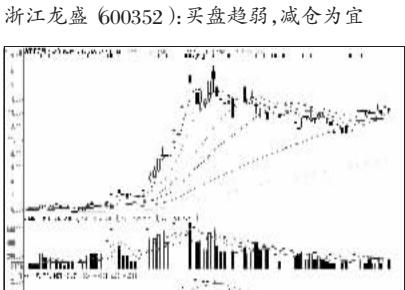
第一医药 (600833): 均线良好, 持股



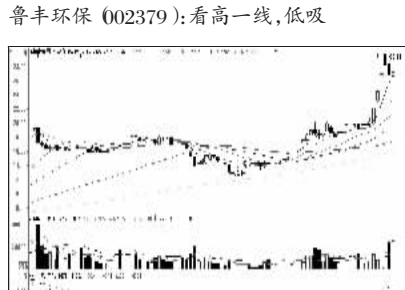
健盛集团 (603558): 整理走势, 观望为宜



北京银行 (601169): 中期向好, 逢低介入



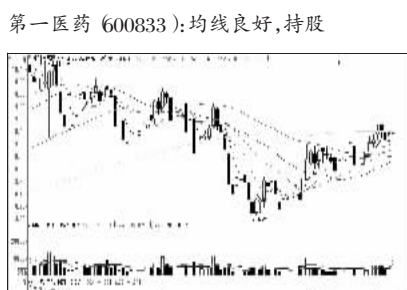
方正证券 (601901): 弱势盘整, 回避



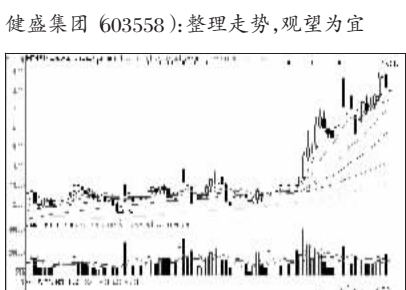
东源电器 (002074): 中期向好, 短线需整固



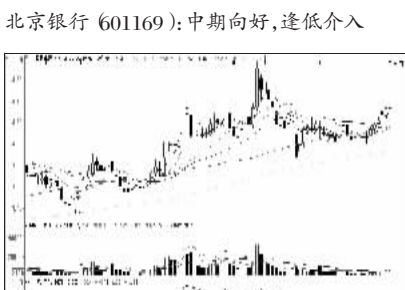
盛屯矿业 (600711): 攻势强劲, 看高一线



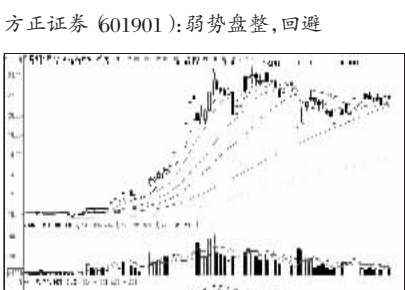
中科电气 (800035): 放量拉升, 看高一线



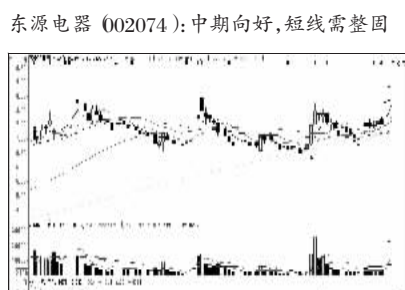
瑞茂通 (600180): 多头格局, 持股



上海石化 (600688): 强势上攻, 看高一线



海通证券 (600837): 均线支持较强, 持股



盛屯矿业 (600711): 攻势强劲, 看高一线



看股票 买彩票
全搞定
大智慧手机版
d.wapgw.cn