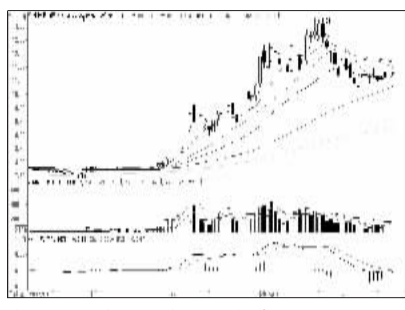
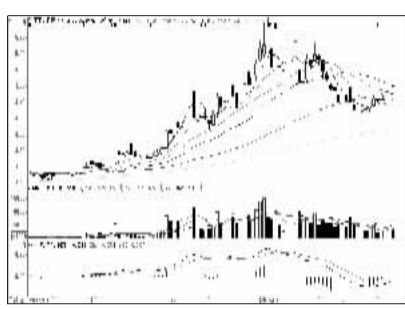


沪深10大权重股

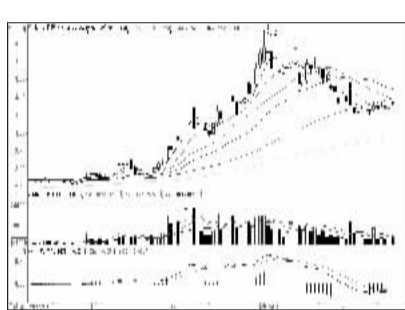
沪市10大权重



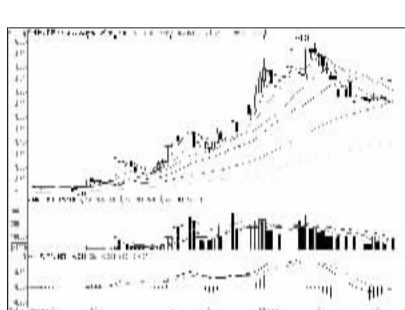
中国石油 (601857): 整理走势, 短线观望



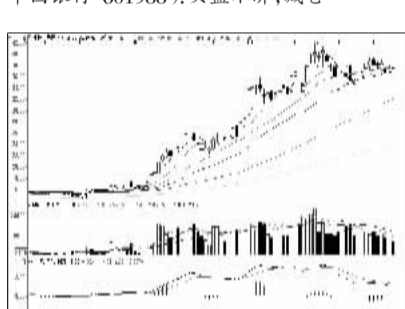
工商银行 (601398): 短线承压, 减仓观望



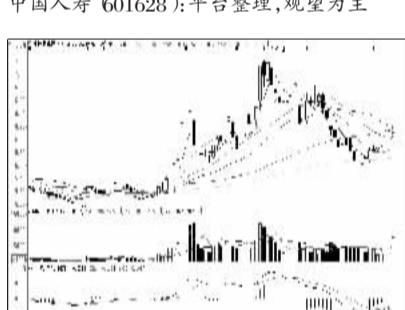
农业银行 (601288): 反弹阻力大, 减磅



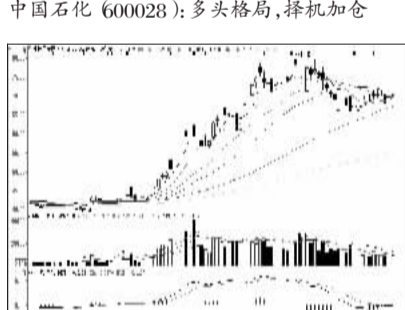
中国银行 (601988): 买盘不济, 减仓



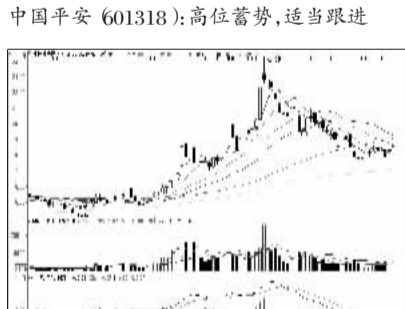
中国人寿 (601628): 平台整理, 观望为主



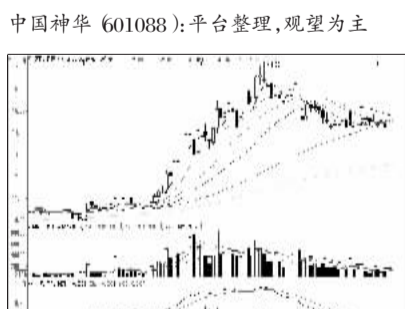
中国石化 (600028): 多头格局, 择机加仓



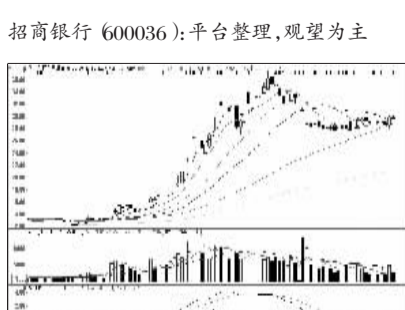
中国平安 (601318): 高位蓄势, 适当跟进



中国神华 (601088): 平台整理, 观望为主

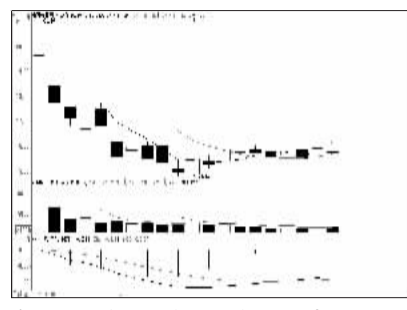


招商银行 (600036): 平台整理, 观望为主

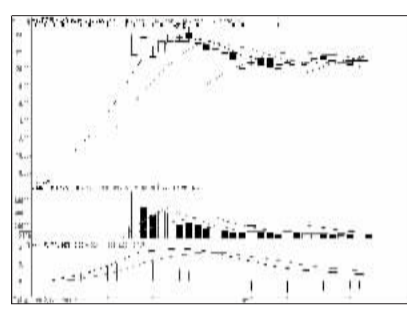


中信证券 (600030): 阻力较大, 暂不介入

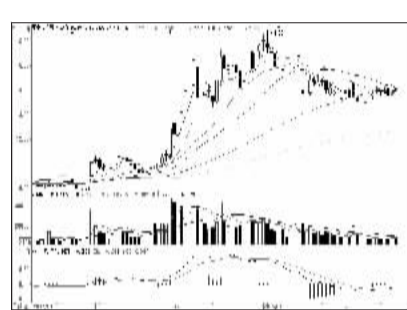
深市10大权重



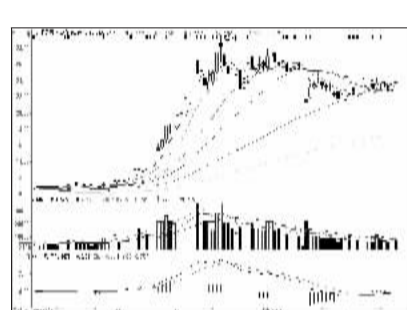
中万宏源 (000166): 调整未完, 逢高减仓



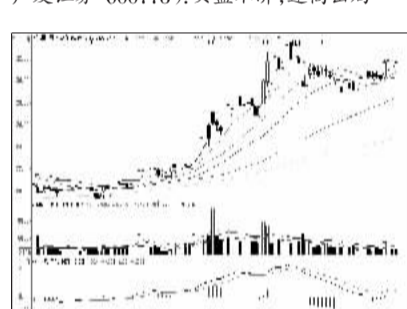
国信证券 (002736): 仍有向下压力, 减仓



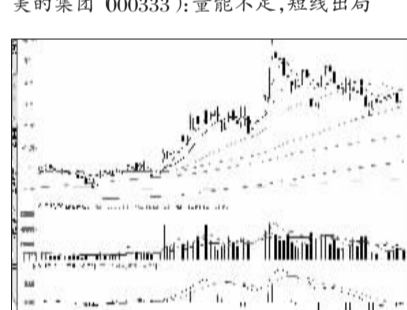
平安银行 (000001): 上有阻力, 减仓观望



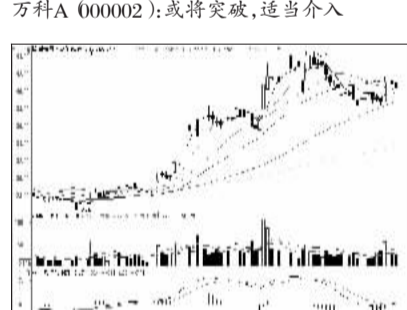
广发证券 (000776): 买盘不济, 逢高出局



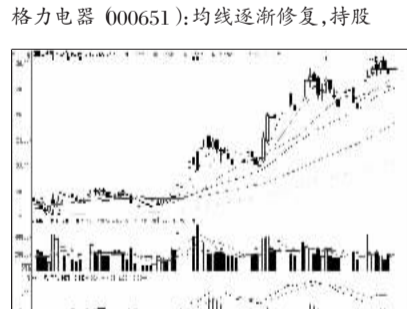
美的集团 (000333): 量能不足, 短线出局



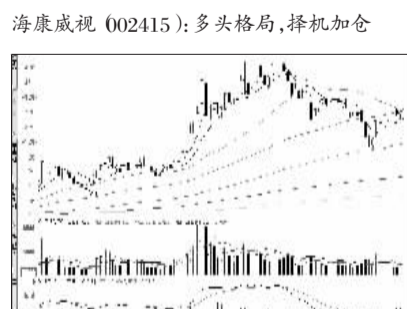
万科A (000002): 或将突破, 适当介入



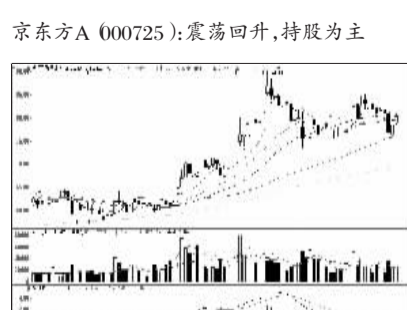
格力电器 (000651): 均线逐渐修复, 持股



海康威视 (002415): 多头格局, 择机加仓



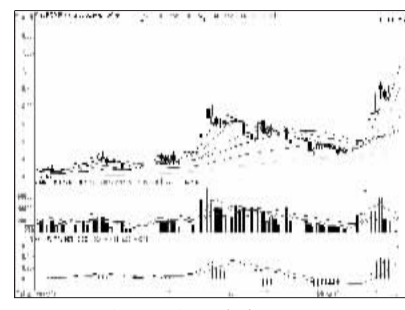
京东方A (000725): 震荡回升, 持股为主



洋河股份 (002304): 中期形态向好, 持股

周涨跌幅前10

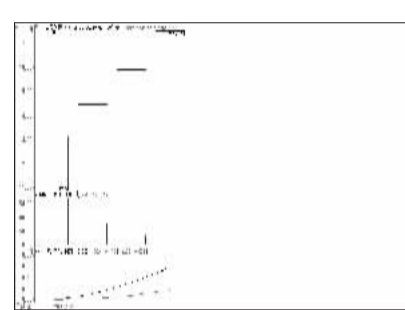
涨幅前10



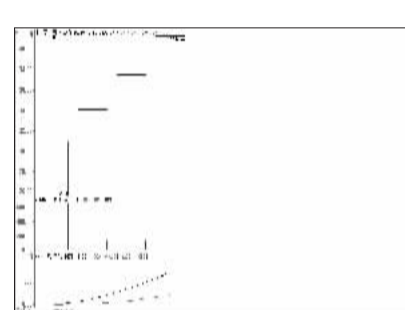
沙钢股份 (002075): 强势特征, 积极关注



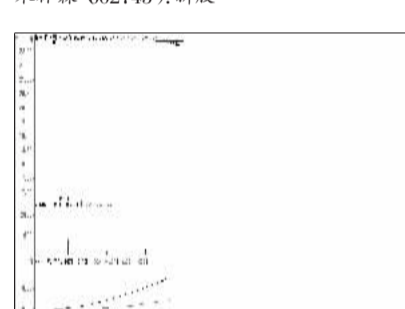
掌趣科技 (300315): 多头市道, 适当跟进



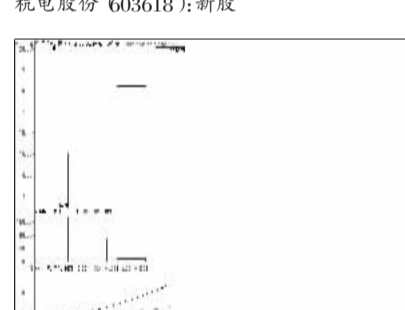
力星股份 (800421): 新股



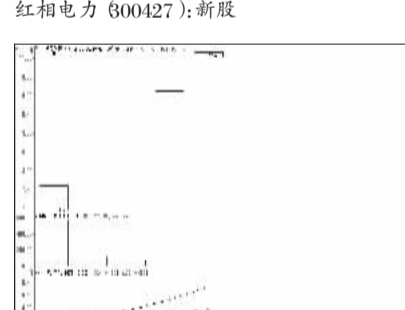
木林森 (002745): 新股



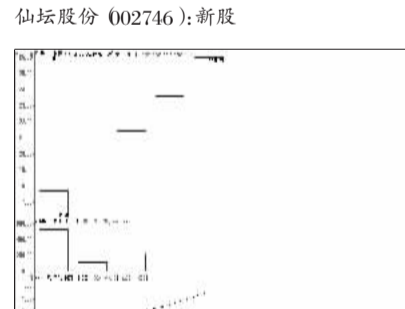
杭电股份 (603618): 新股



红相电力 (800427): 新股



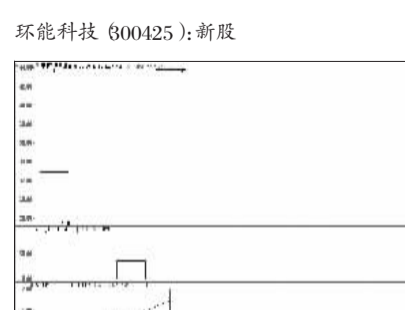
仙坛股份 (002746): 新股



光华科技 (800271): 新股



环能科技 (800425): 新股

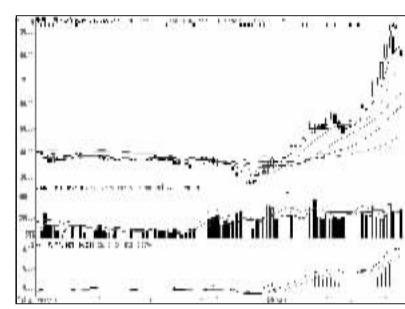


唐德影视 (800426): 新股

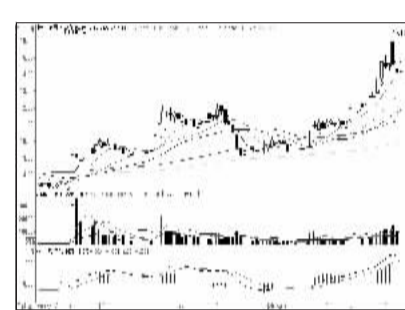
跌幅前10



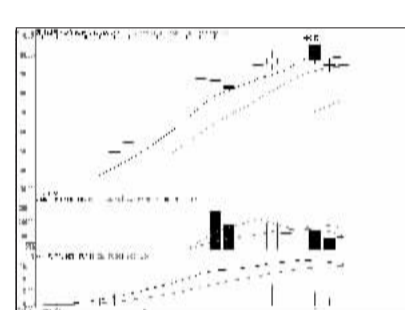
众合机电 (000925): 放量下跌, 择机出局



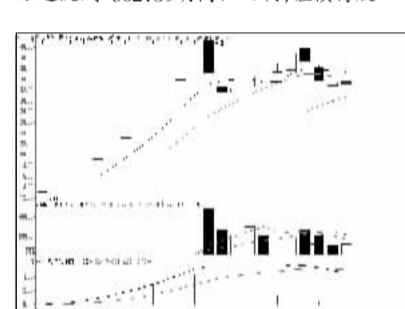
乐视网 (300104): 攻势趋弱, 离场为宜



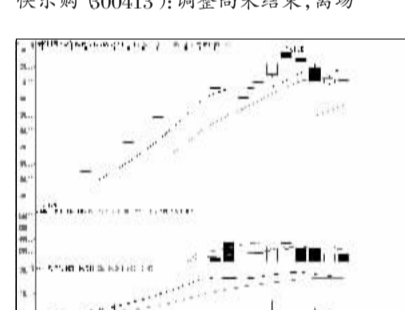
中电广通 (600764): 强势特征, 逢低加仓



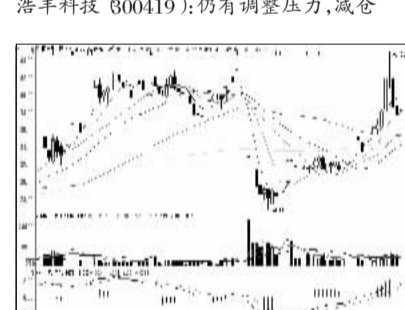
万达院线 (002739): 高位回调, 谨慎持股



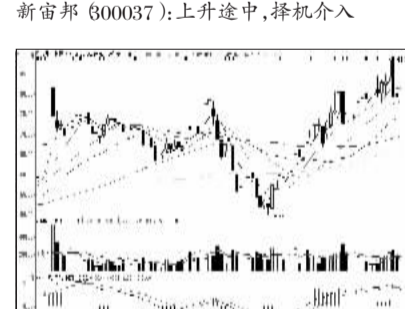
快乐购 (300413): 调整尚未结束, 离场



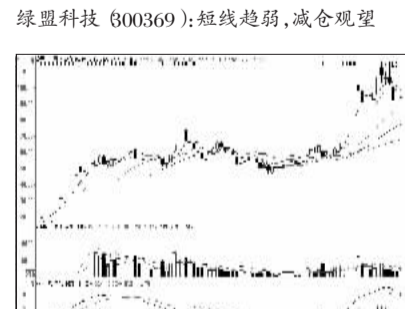
浩丰科技 (300419): 仍有调整压力, 减仓



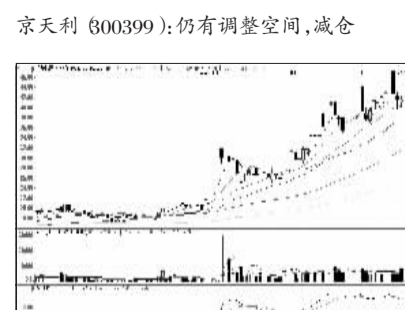
新宙邦 (300037): 上升途中, 择机介入



绿盟科技 (300369): 短线趋弱, 减仓观望



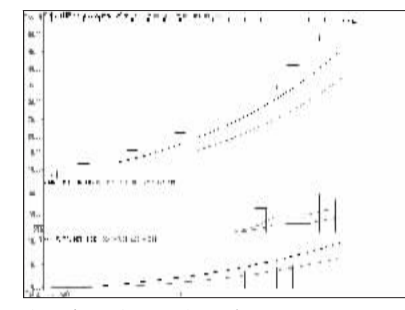
京天利 (300399): 仍有调整空间, 减仓



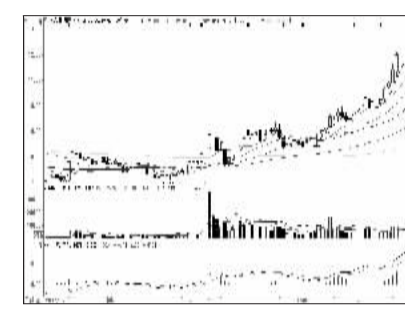
信维达 (600571): 多头格局, 持股

连续涨跌前10

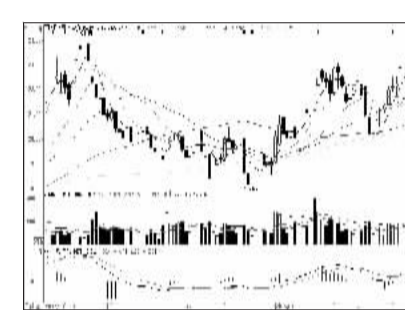
连涨前10



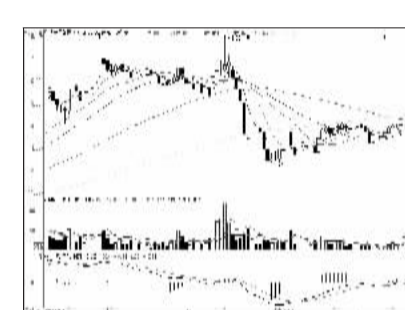
中文在线 (300364): 攻势趋弱, 落袋为安



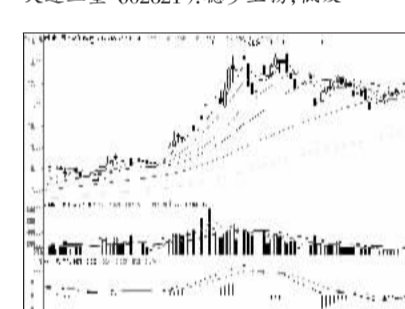
齐心集团 (002301): 多头格局, 持股为主



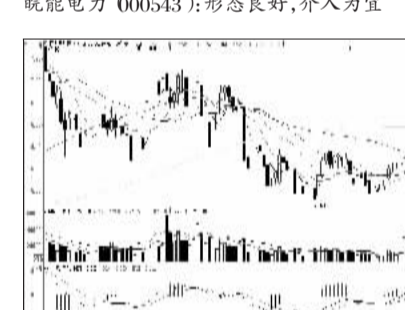
亚厦股份 (002375): 上攻形态, 择机跟进



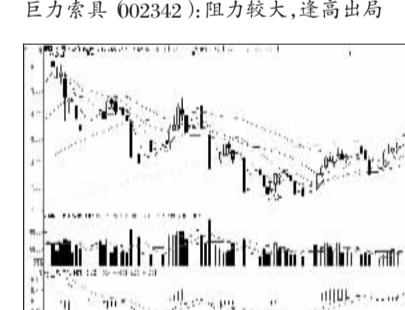
大连三垒 (002621): 稳步上扬, 低吸



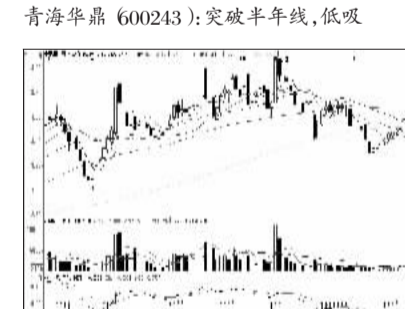
皖能电力 (000543): 形态良好, 介入为宜



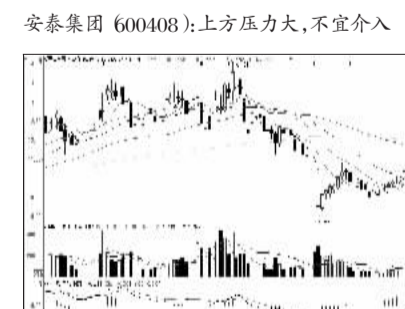
巨力索具 (002342): 阻力较大, 逢高出局



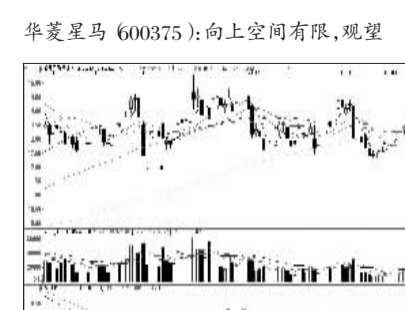
青海华鼎 (600243): 突破半年线, 低吸



安泰集团 (600408): 上方压力大, 不宜介入

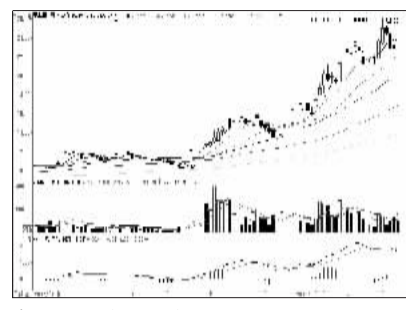


华菱星马 (600375): 向上空间有限, 观望

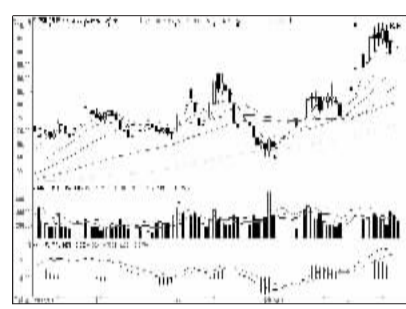


辉隆股份 (002556): 有望挑战箱顶, 关注

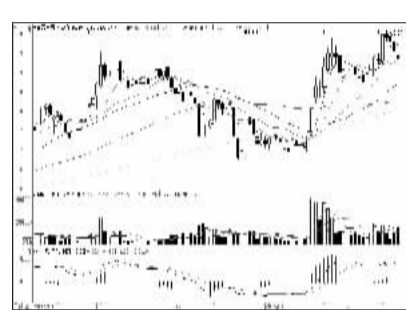
连跌前10



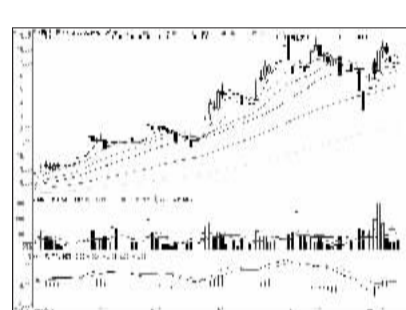
泰禾集团 (000732): 短线趋弱, 减仓观望



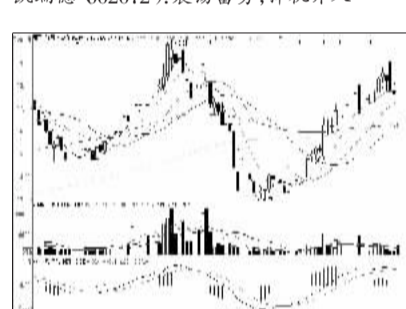
石基信息 (002153): 仍需整固, 短线观望



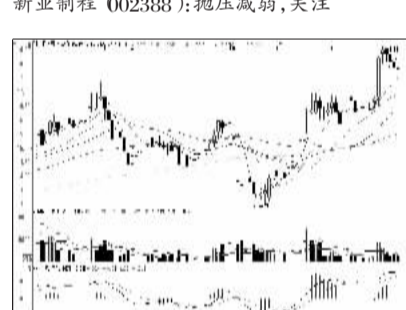
国旅联合 (600358): 向下空间有限, 持股



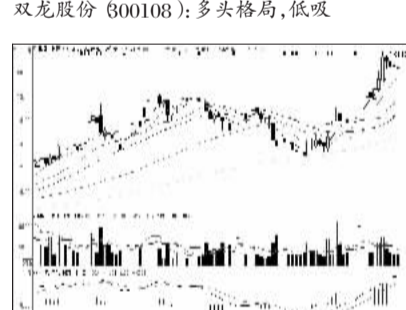
凯瑞德 (002072): 震荡蓄势, 择机介入



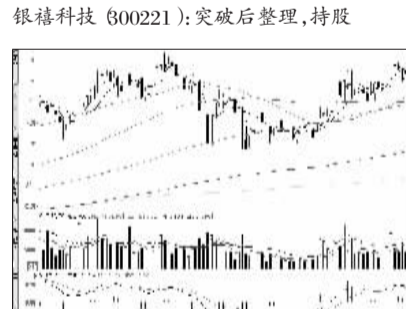
新亚制程 (002388): 抛压减弱, 关注



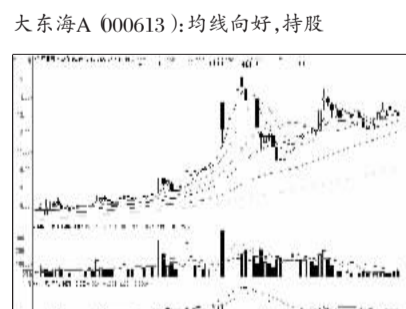
双龙股份 (300108): 多头格局, 低吸



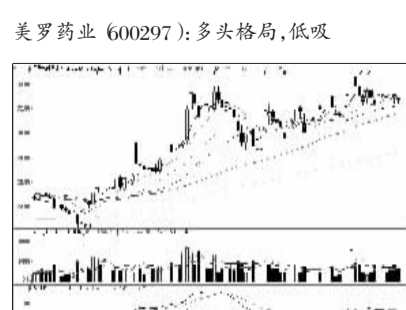
银禧科技 (300221): 突破后整理, 持股



大东海A (000613): 均线向好, 持股



美罗药业 (600297): 多头格局, 低吸



正泰电器 (601877): 走势偏弱, 观望为主