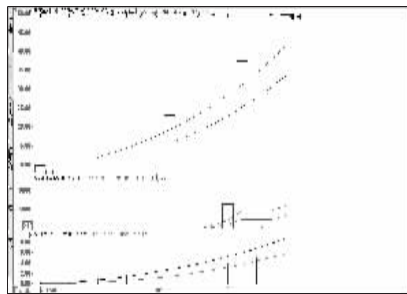


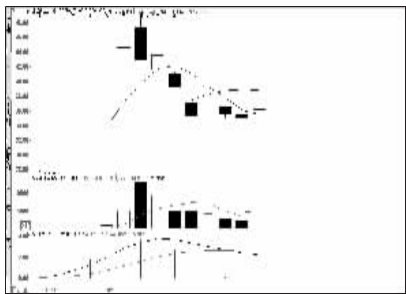
股东人数增减前10

股东人数减少前10



中文在线 (800364): 浮盈可观, 适时减磅

股东人数增加前10



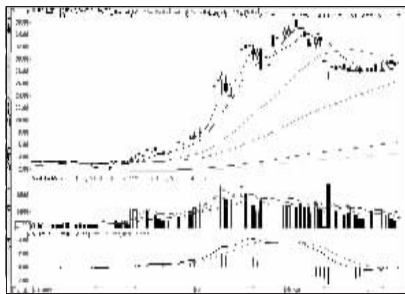
健盛集团 (603558): 震荡整理, 持有为主

资金流入金额前10



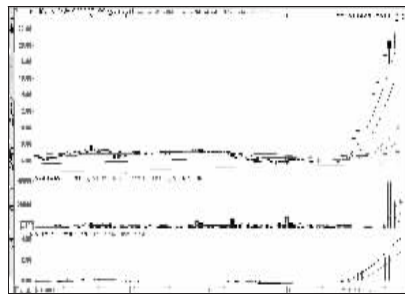
康美药业 (600518): 强势拉升, 持股观望

资金流出金额前10



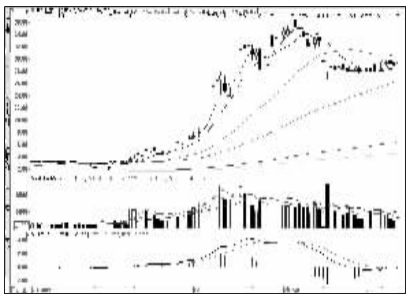
中信证券 (600030): 震荡蓄势, 继续持有

成交突增前10

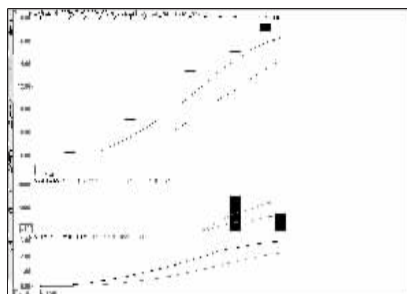


大智慧 (601519): 分歧加剧, 落袋为安

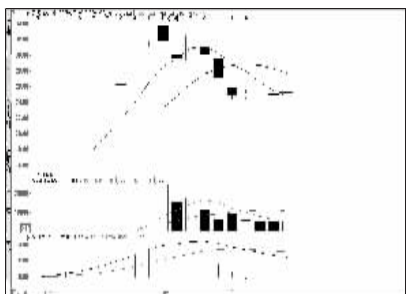
成交金额前8



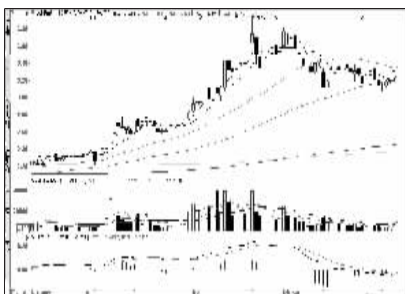
中信证券 (600030): 震荡蓄势, 继续持有



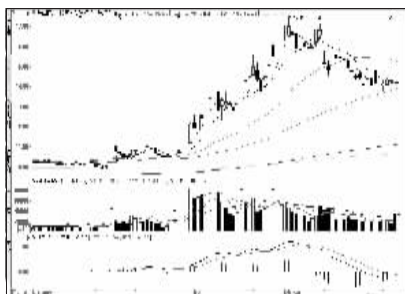
西部黄金 (601069): 高位震荡, 适当减磅



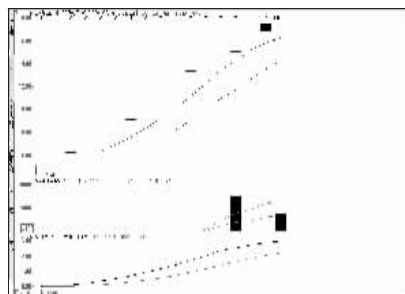
宁波高发 (603788): 震荡整理, 持有为主



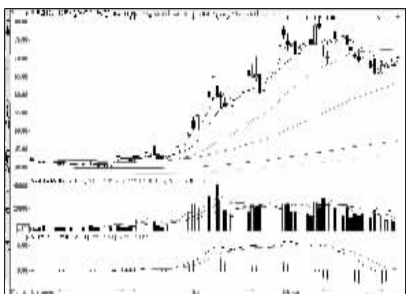
武钢股份 (600005): 主力实力强大, 入货



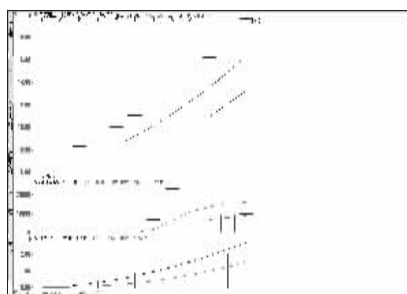
兴业银行 (601166): 走势偏弱, 谨防下跌



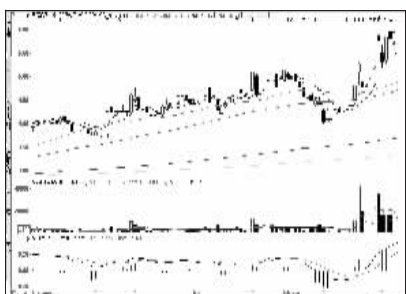
西部黄金 (601069): 高位震荡, 适当减磅



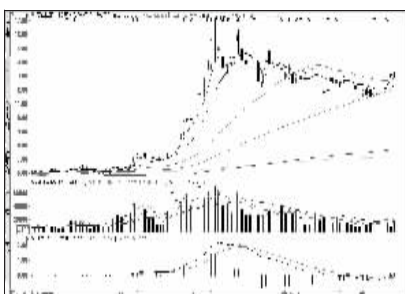
中国平安 (601318): 量能不齐, 谨防调整



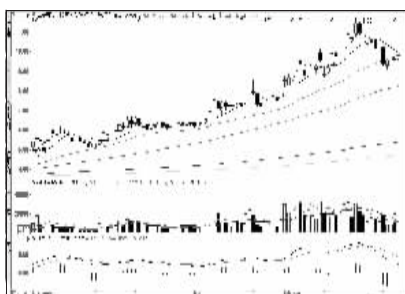
华友钴业 (603799): 连续涨停, 继续持有



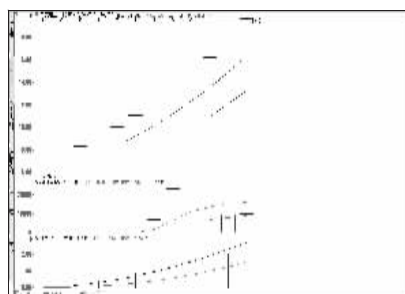
吉电股份 (000875): 涨幅可观, 落袋为安



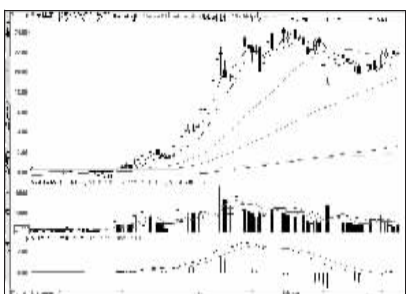
方正证券 (601901): 主力实力不强, 出货



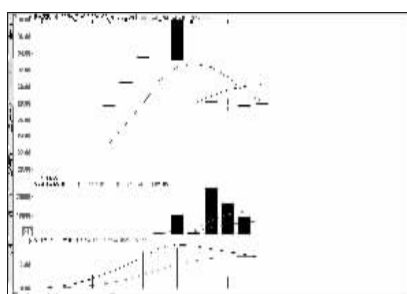
上海电气 (601727): 整理蓄势格局, 观望



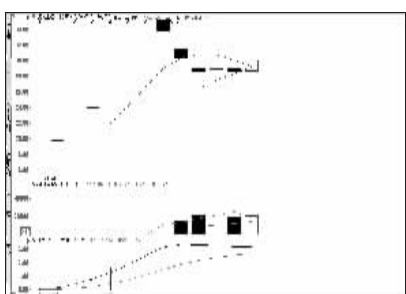
华友钴业 (603799): 连续涨停, 继续持有



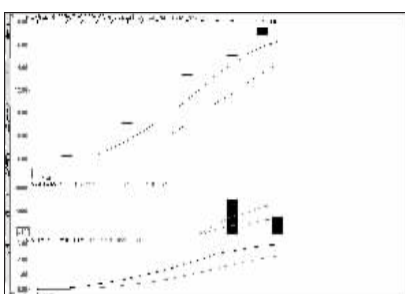
海通证券 (600837): 震荡形态, 观望为主



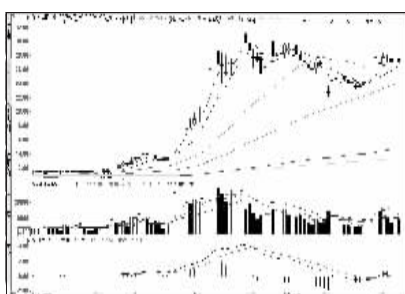
晨光文具 (603899): 回调整理, 观望为主



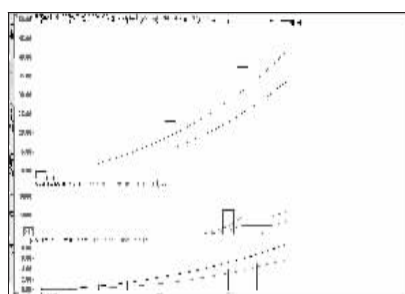
航天工程 (603698): 震荡整理, 继续持有



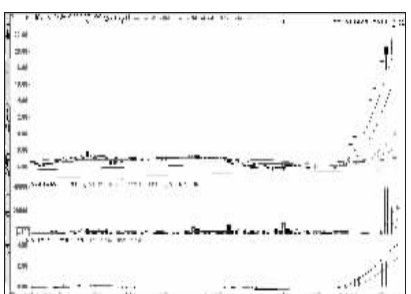
西部黄金 (601069): 高位震荡, 适当减磅



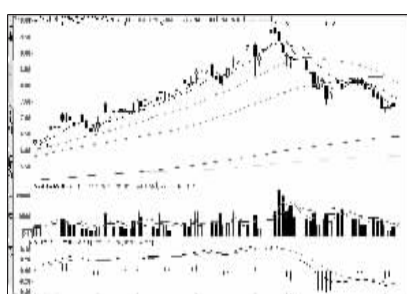
招商证券 (600999): 盘整为主, 短期观望



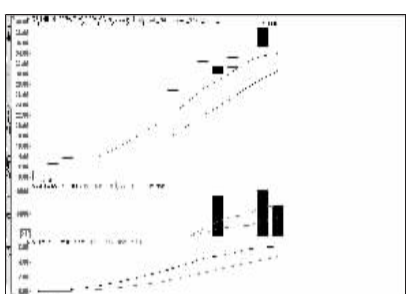
中文在线 (800364): 浮盈可观, 适时减磅



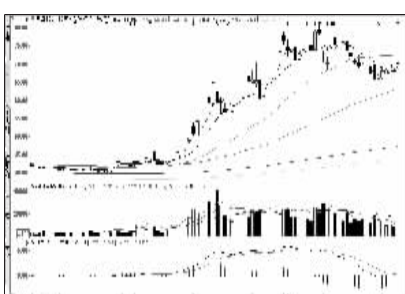
大智慧 (601519): 分歧加剧, 落袋为安



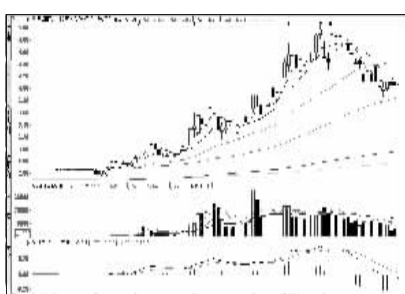
上峰水泥 (000672): 强势特征明显, 跟进



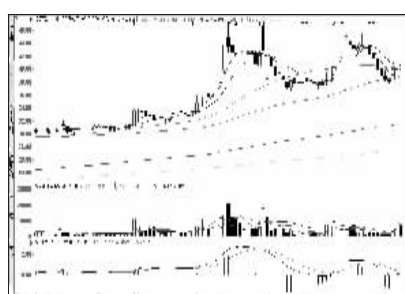
再升科技 (603601): 止升回落, 出货为主



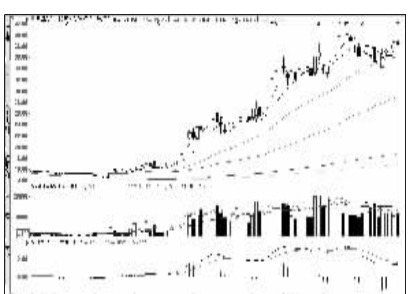
中国平安 (601318): 量能不齐, 谨防调整



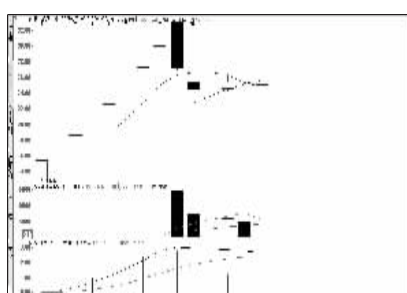
中国银行 (601988): 盘整为主, 短期观望



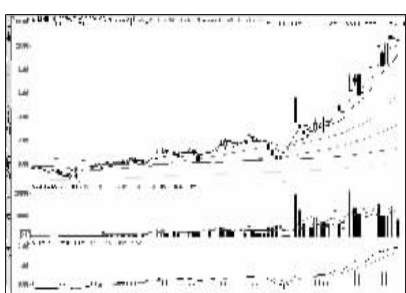
浩宁达 (002356): 涨势未尽, 逢低进场



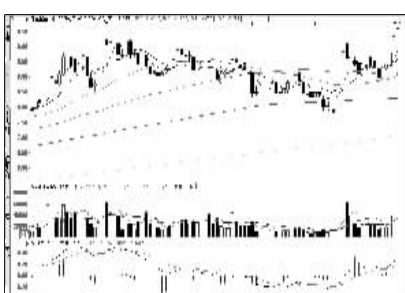
中国人寿 (601628): 上行有阻力, 出货



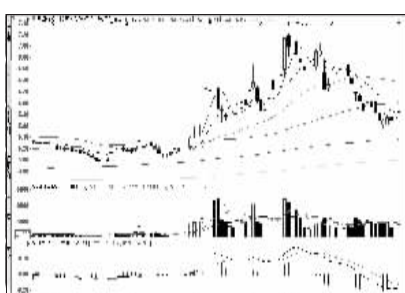
利民股份 (002734): 震荡行情, 持股观望



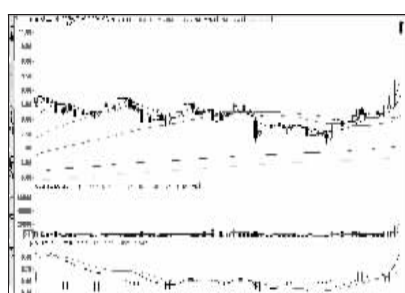
麦捷科技 (600319): 维持上扬格局, 增仓



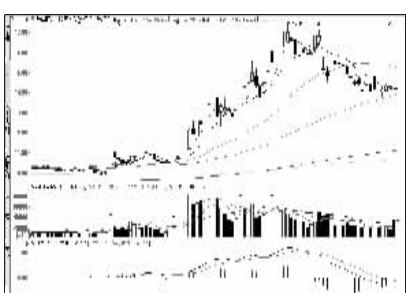
强生控股 (600662): 涨势良好, 介入为主



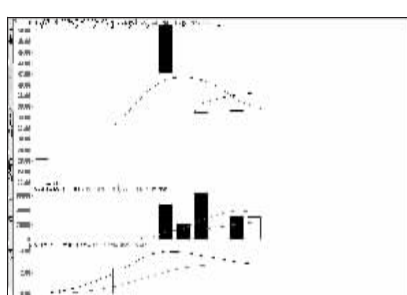
中国石化 (600028): 买入意义不大, 观望



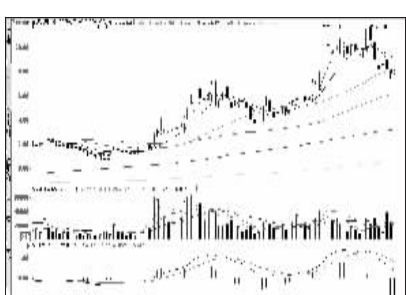
百大集团 (600865): 多方占据主动, 跟入



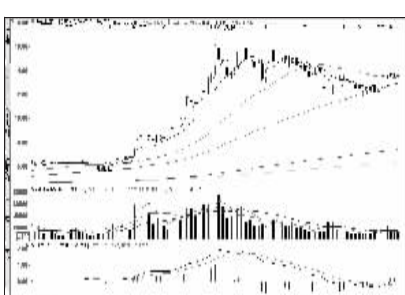
兴业银行 (601166): 走势偏弱, 谨防下跌



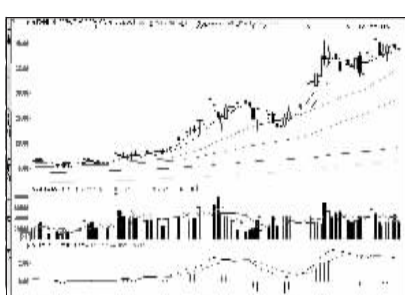
诺力股份 (603611): 回调整理, 持股观望



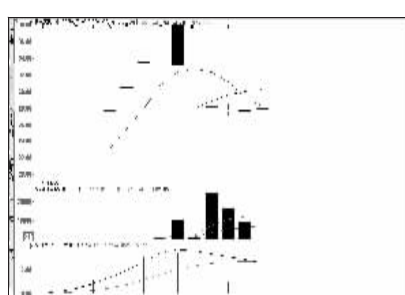
廊坊发展 (600149): 继续震荡格局, 观望



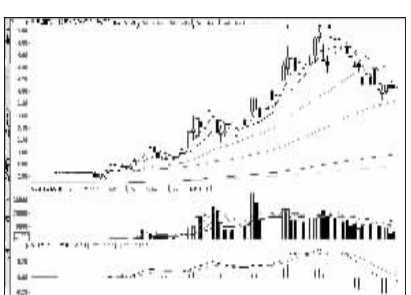
兴业证券 (601377): 上攻力度减弱, 不跟



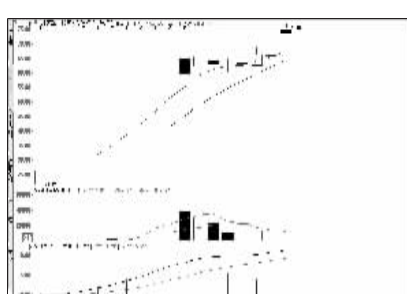
用友网络 (600588): 上行有阻力, 出货



晨光文具 (603899): 回调整理, 观望为主



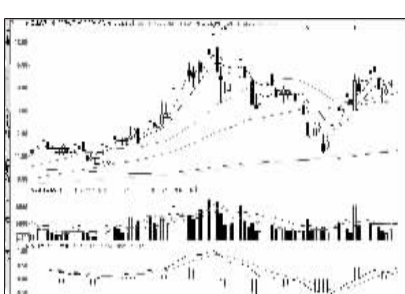
中国银行 (601988): 盘整为主, 短期观望



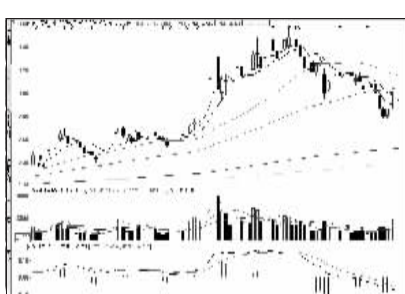
春秋航空 (601021): 获利可观, 谨防调整



易联众 (600096): 止升回落, 出货为主



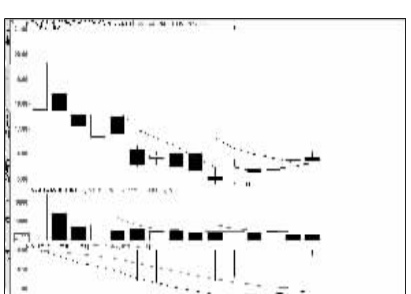
爱建股份 (600643): 主力抬抬明显, 追入



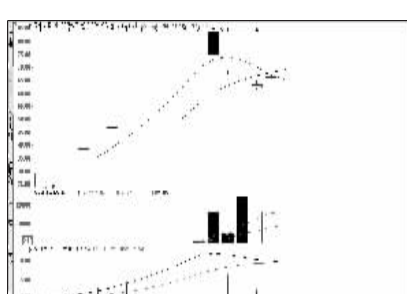
京东方A (000725): 整理为主, 不入为宜



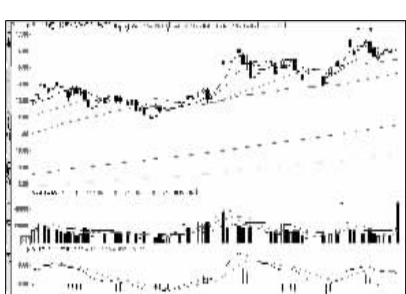
浙江震元 (000705): 涨势过快, 透支前景



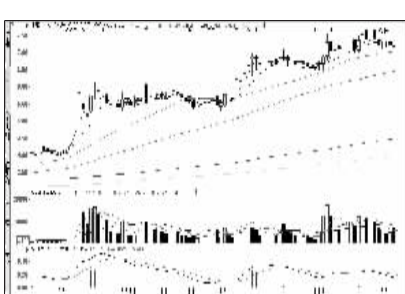
申万宏源 (600166): 盘整行情, 观望为宜



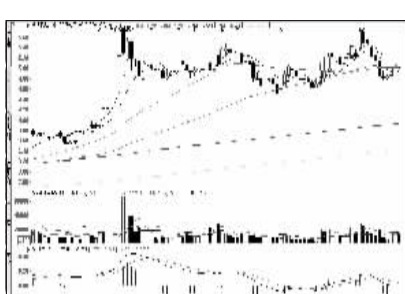
昆仑万维 (600418): 买气减弱, 谨防调整



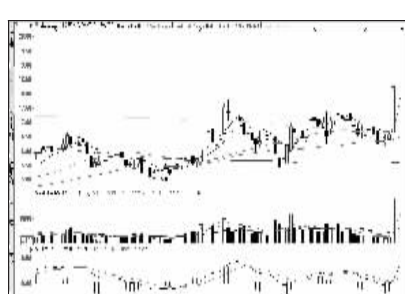
广东明珠 (600382): 有回调压力, 不跟



九龙山 (600555): 市场关注度低, 不跟



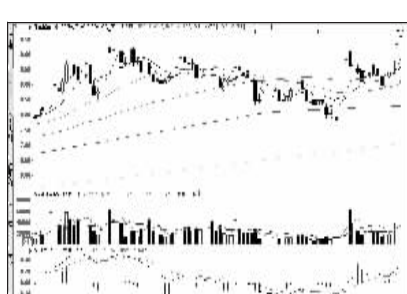
四川长虹 (600839): 参与者不积极, 不跟



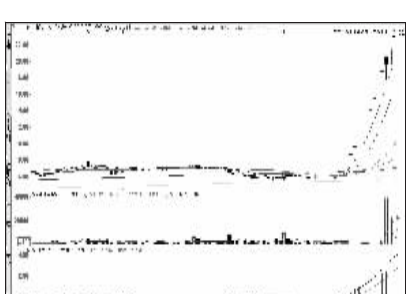
康美药业 (600518): 强势拉升, 持股观望



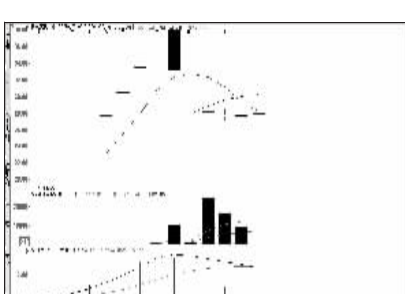
永艺股份 (603600): 回调整理, 暂时观望



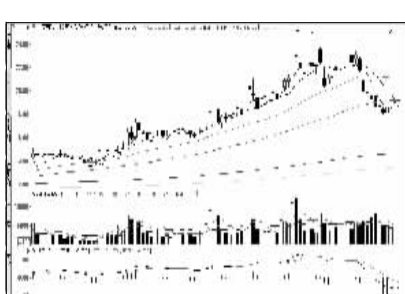
强生控股 (600662): 涨势良好, 介入为主



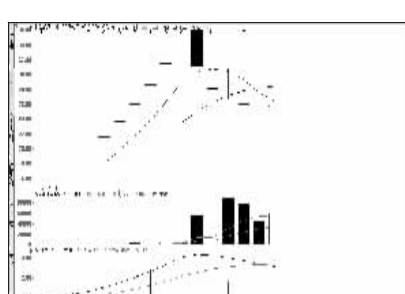
大智慧 (601519): 分歧加剧, 落袋为安



晨光文具 (603899): 回调整理, 观望为主



东方电气 (600875): 横向整理, 观望为宜



永艺股份 (603600): 回调整理, 暂时观望



看股票 买彩票
全搞定
大智慧手机版
d.wapgw.cn