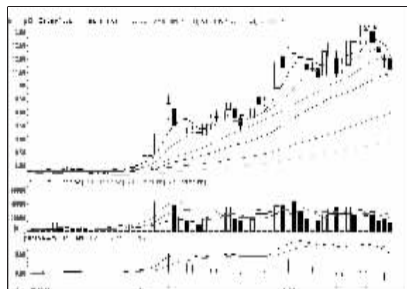


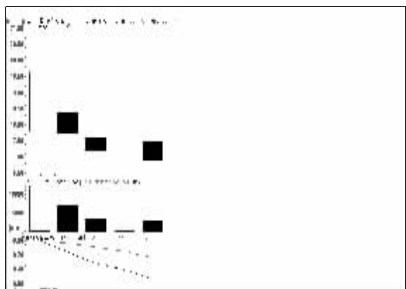
## 沪深10大权重股

沪市10大权重



中国石油 (601857):震荡格局,观望为主

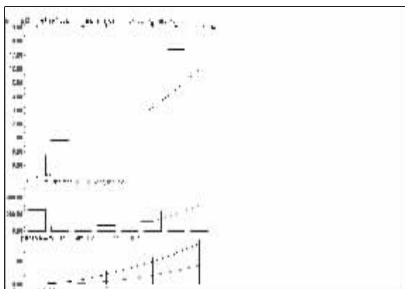
深市10大权重



中万宏源 (000166):仍需整固,反弹离场

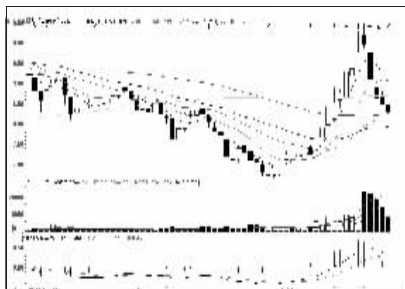
## 周涨跌幅前10

涨幅前10



中文在线 (800364):新股

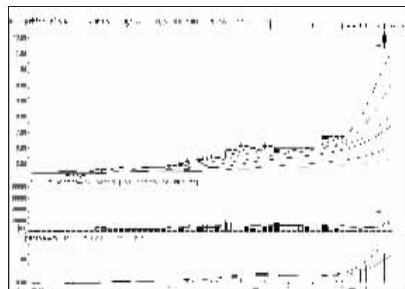
跌幅前10



海润光伏 (600401):跌势趋缓,观望为主

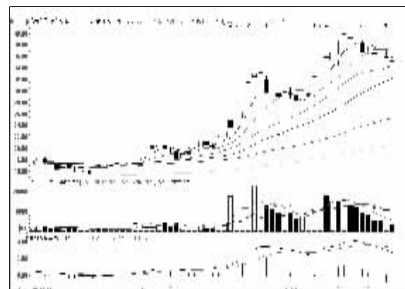
## 连续涨跌前10

连涨前10

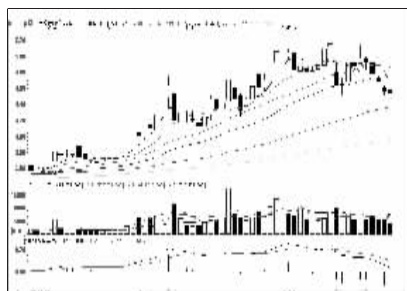


科达股份 (600986):高位放量,谨慎持股

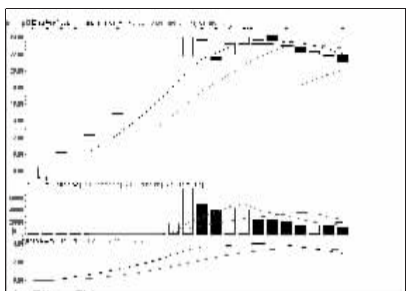
连跌前10



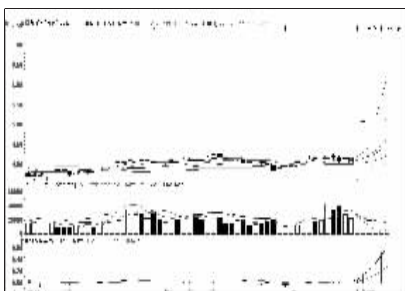
永大集团 (002622):攻势趋弱,减仓



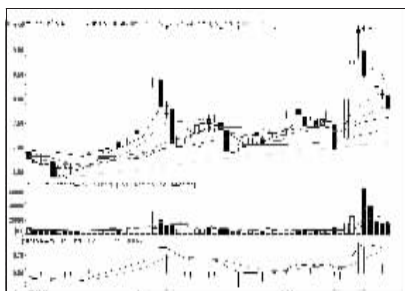
工商银行 (601398):仍有压力,暂时回避



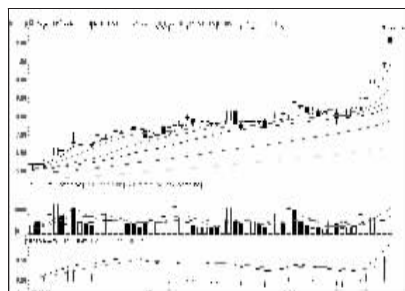
国信证券 (602736):仍有调整空间,观望



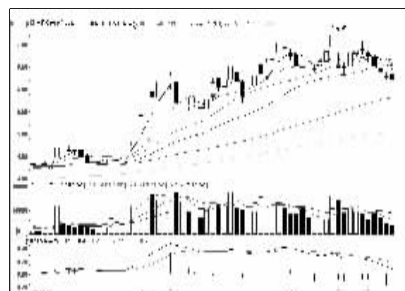
汇鸿股份 (600981):成交放大,逐步兑现



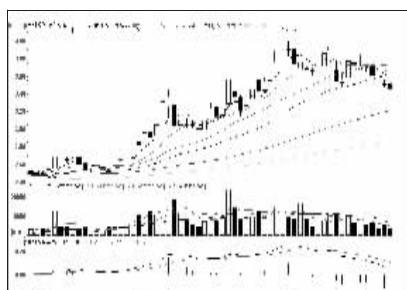
大江股份 (600695):中期形态尚好,低吸



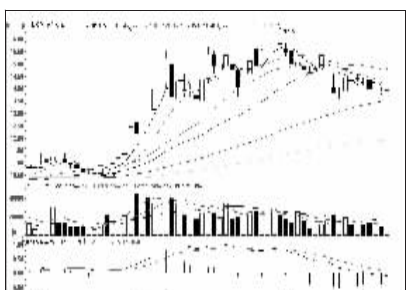
上海电力 (600021):多头格局,逢低加仓



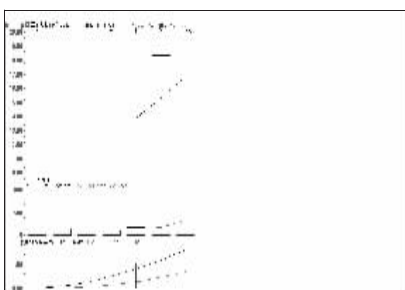
交通银行 (601328):短线偏弱,暂不介入



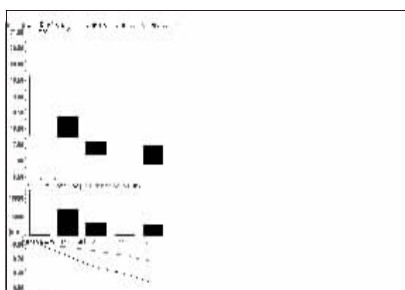
农业银行 (601288):形态趋弱,离场观望



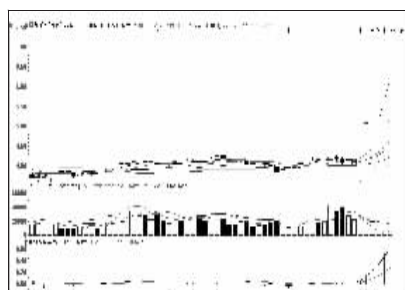
平安银行 (000001):震荡格局,保持观望



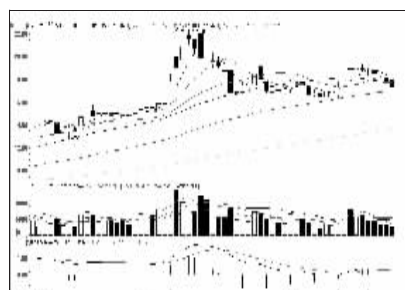
再升科技 (603601):新股



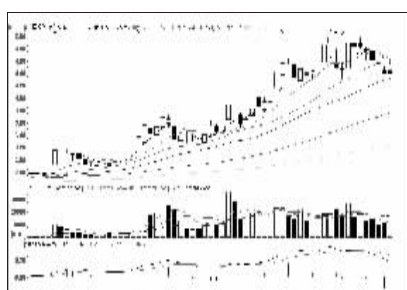
中万宏源 (000166):仍需整固,反弹离场



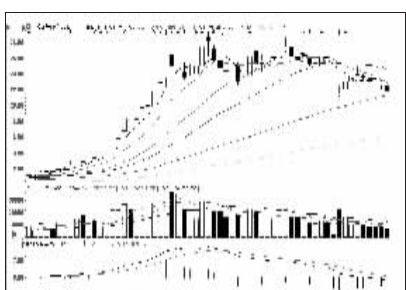
汇鸿股份 (600981):成交放大,逐步兑现



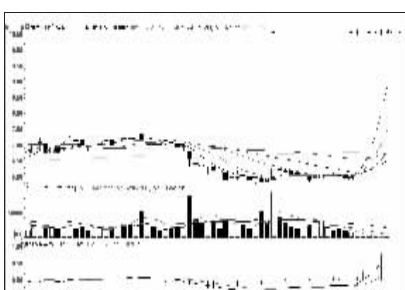
天津港 (600717):盘整走势,减仓观望



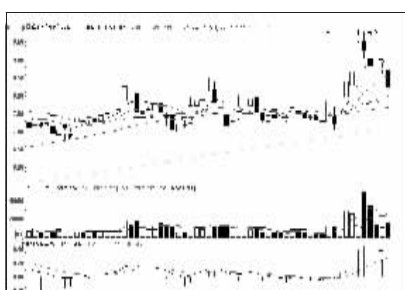
中国银行 (601988):仍需整理,暂不介入



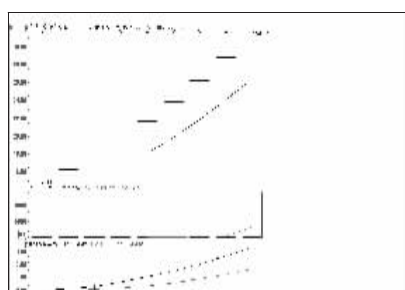
广发证券 (000776):持续走软,反弹出局



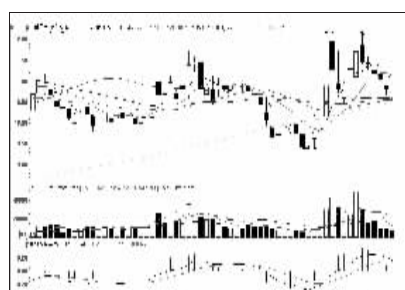
大智慧 (601519):卖方惜售,持股观望



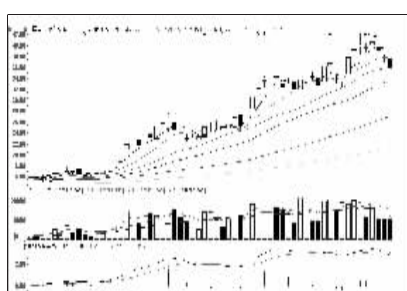
华升股份 (600156):下跌空间有限,低吸



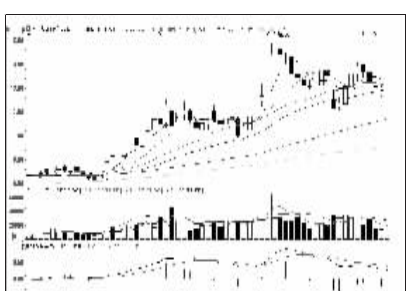
宁波高发 (603788):新股



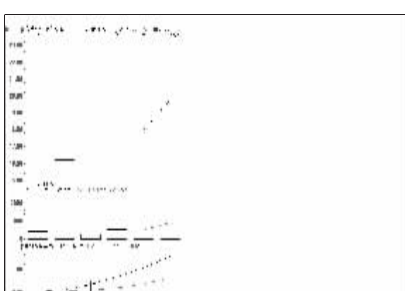
赤峰黄金 (600988):回调到位,适当吸纳



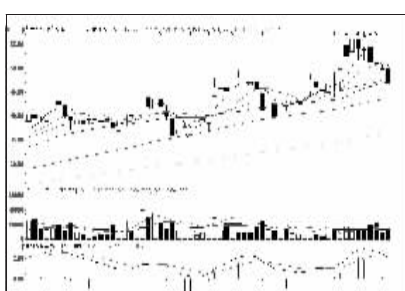
中国人寿 (601628):高位震荡,减仓观望



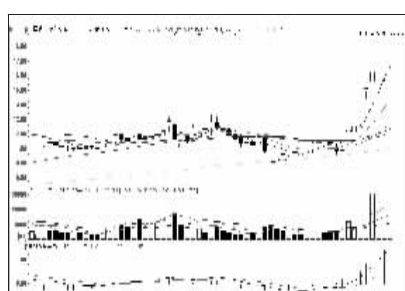
万科A (000002):多头格局,持股为主



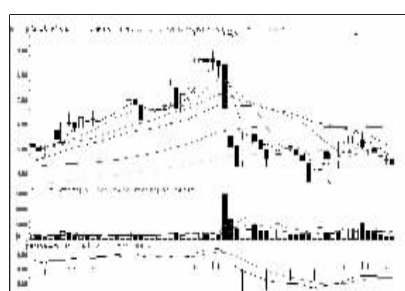
永艺股份 (603600):新股



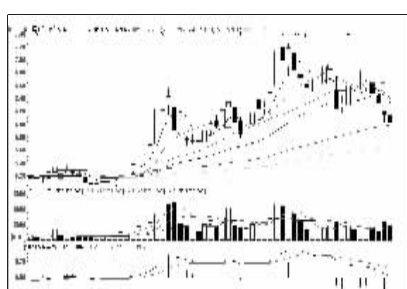
汇金股份 (600368):上升通道未破,关注



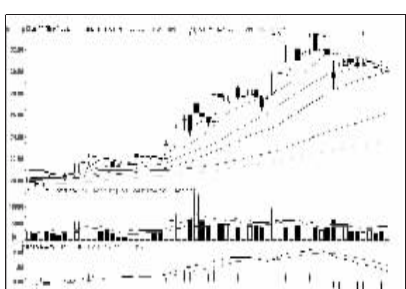
中国武夷 (600797):中期向好,逢低介入



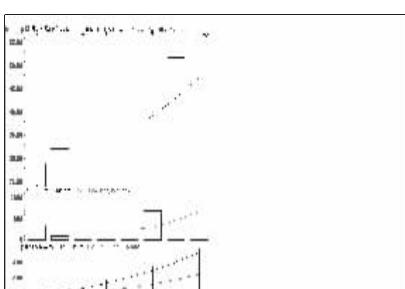
东阳光科 (600673):弱势盘整,减仓回避



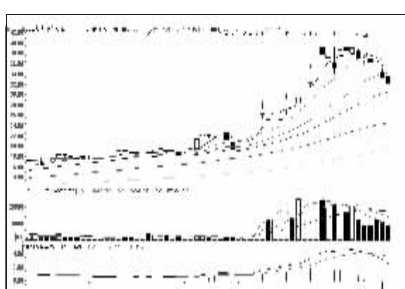
中国石化 (600028):60日线附近有望企稳



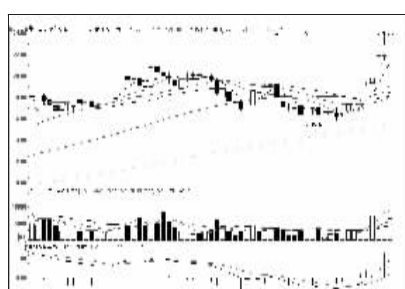
美的集团 (000333):中期向好,逢低吸纳



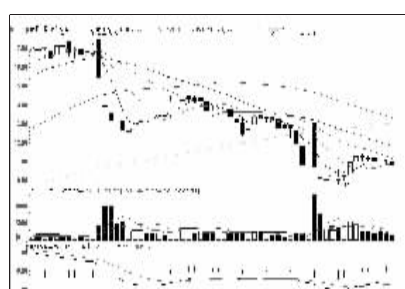
昆仑万维 (600418):新股



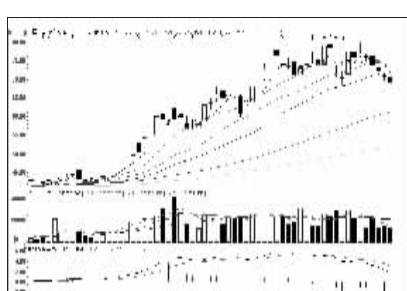
赛象科技 (002337):趋势走弱,减仓观望



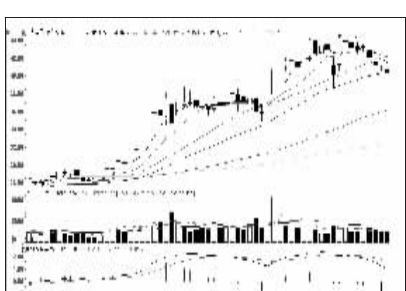
浙江众成 (002522):多头市道,增仓



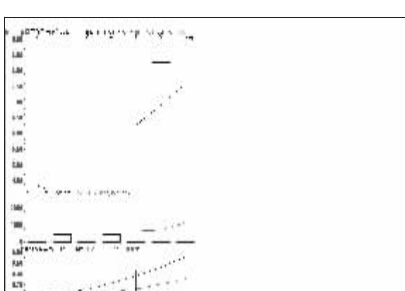
鹏欣资源 (600490):空头市道,回避



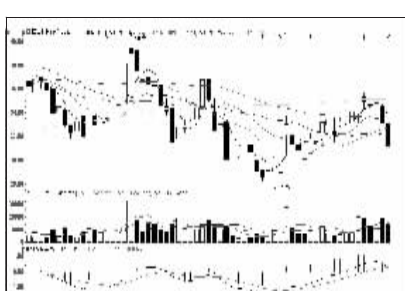
中国平安 (601318):高位震荡,减仓观望



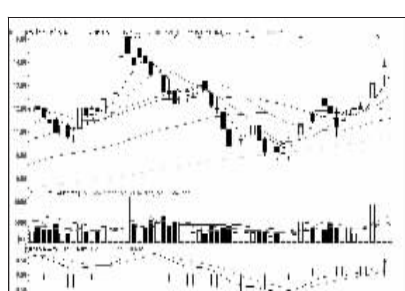
格力电器 (000651):中期看好,逢低关注



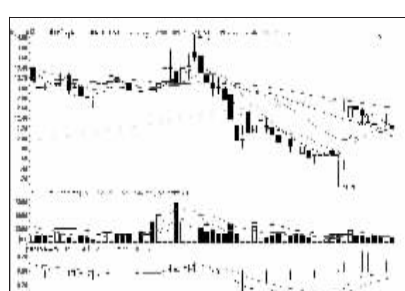
西部黄金 (601069):新股



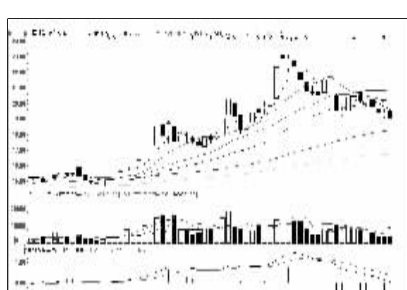
国瓷材料 (600285):上方压力大,观望



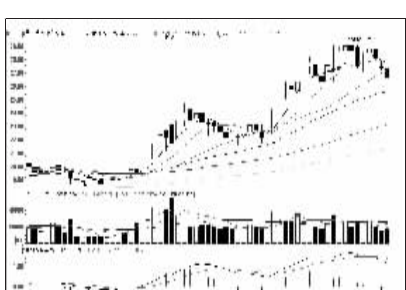
双林股份 (600100):中期向好,积极关注



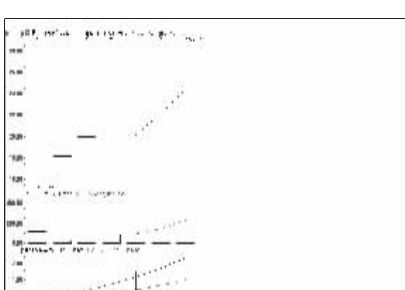
广东甘化 (000576):压力重重,不宜介入



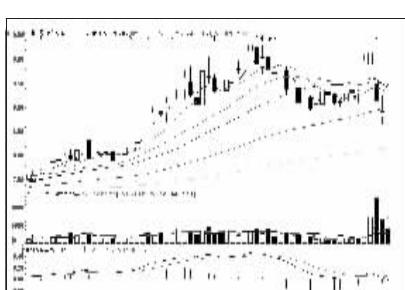
中国神华 (601088):弱势格局,回避



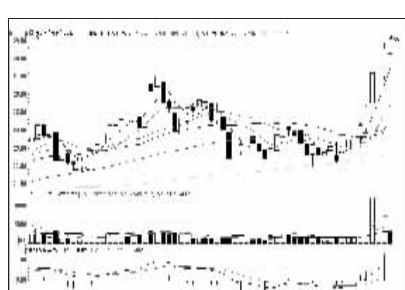
海康威视 (002415):短线趋弱,减仓观望



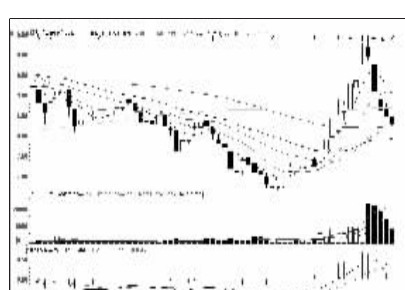
苏试试验 (800416):新股



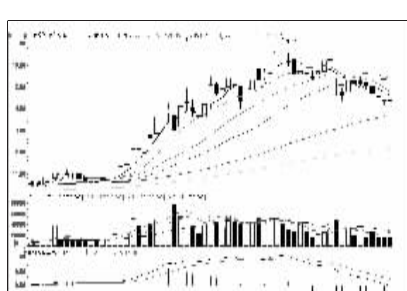
深圳惠程 (002168):放量下挫,离场为宜



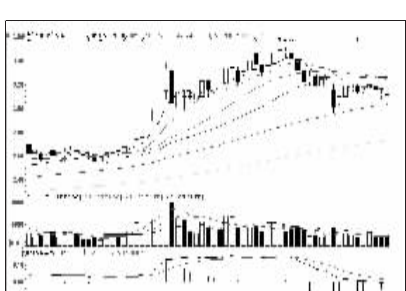
朗姿股份 (002612):攻势强劲,择机介入



海润光伏 (600401):跌势趋缓,观望为主



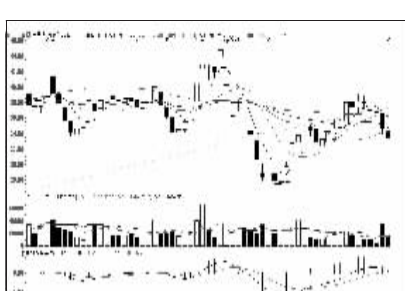
招商银行 (600036):高位回调,反弹减仓



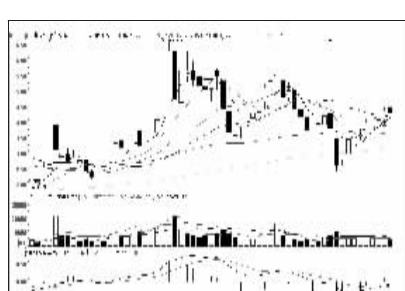
京东方A (000725):走势趋弱,离场为宜



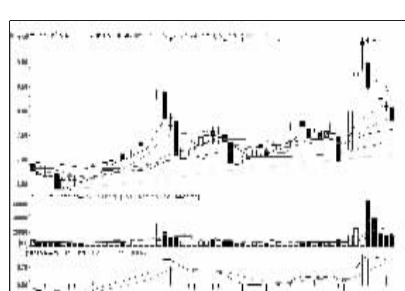
南华仪器 (800417):新股



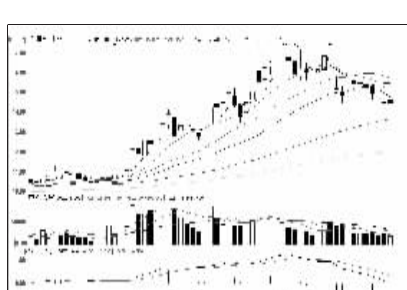
百圆裤业 (002640):弱势格局,回避



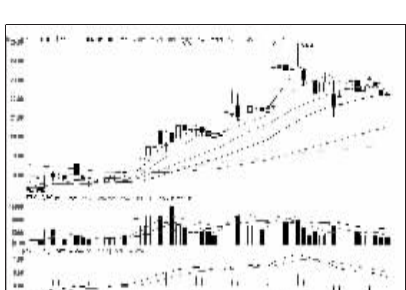
中洲控股 (000042):盘整走势,观望为主



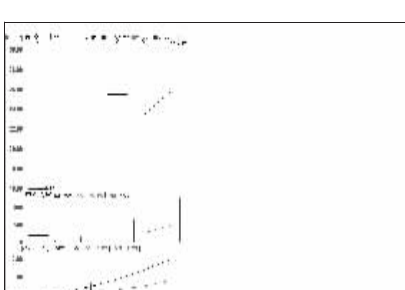
大江股份 (600695):中期形态尚好,低吸



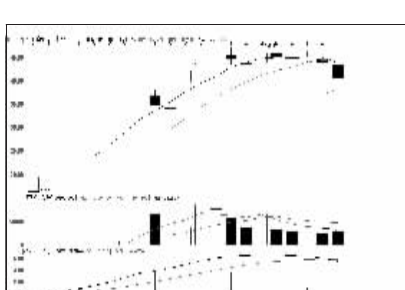
兴业银行 (601166):形态变差,短线回避



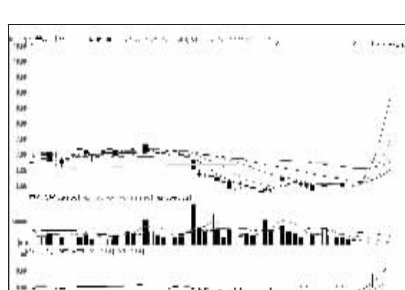
五粮液 (000858):窄幅整理,持股观望



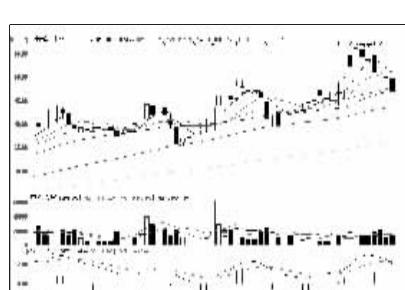
伊之密 (800415):新股



迦南科技 (600412):仍有向下空间,回避



大智慧 (601519):卖方惜售,持股观望



汇金股份 (600368):上升通道未破,关注