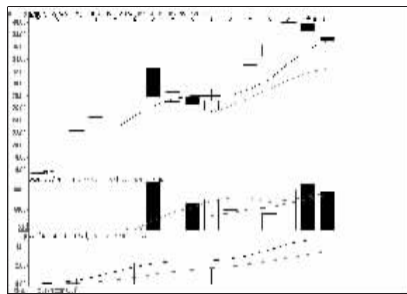


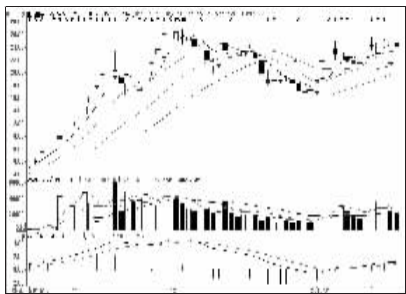
## 股东人数增减前10

股东人数减少前10



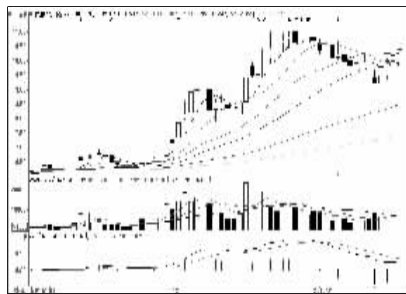
金盾股份(800411):调整未完,兑现离场

股东人数增加前10



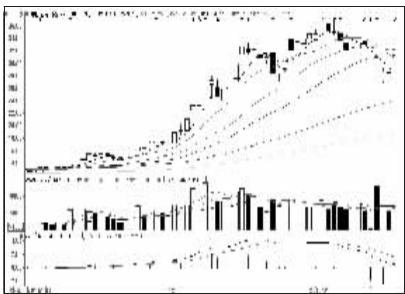
兰石重装(603169):面临回调,出局为宜

资金流入金额前10



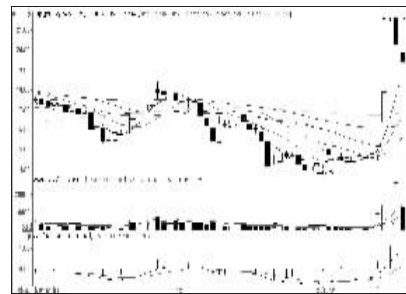
民生银行(600016):强势震荡,持股为主

资金流出金额前10



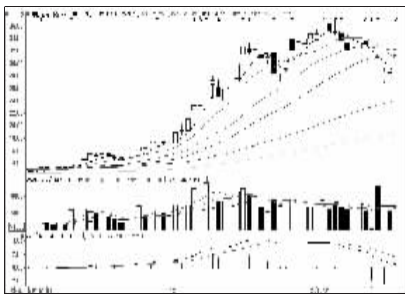
中信证券(600030):调整格局,观望

成交突增前10

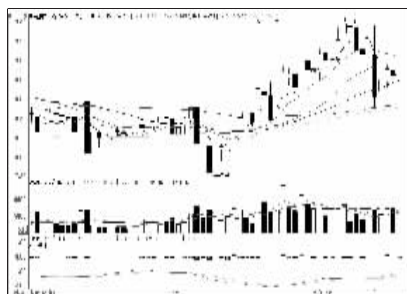


云意电气(800304):回调压力大,回避

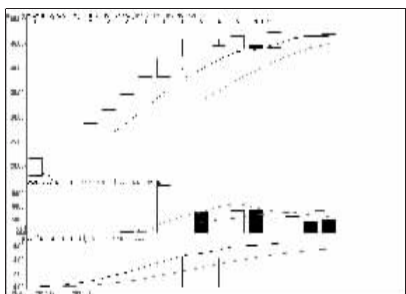
成交金额前8



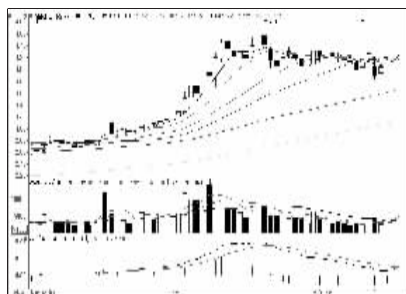
中信证券(600030):调整格局,观望



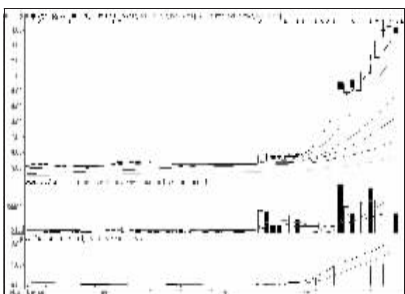
中百集团(000759):震荡盘升,持股为主



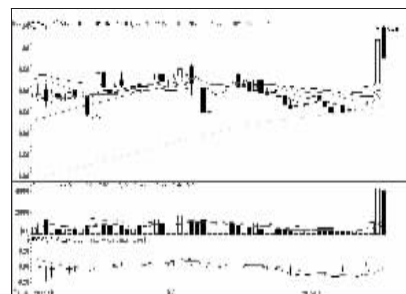
南威软件(603636):压力渐增,兑现离场



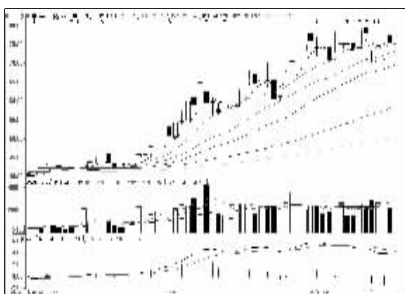
包钢股份(600010):需要整固,持股不追



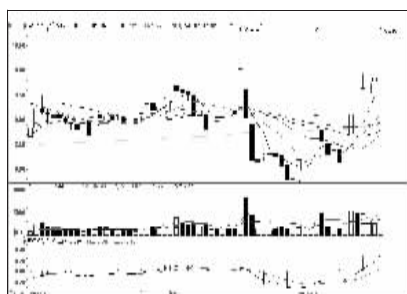
中国南车(601766):涨幅过大,离场观望



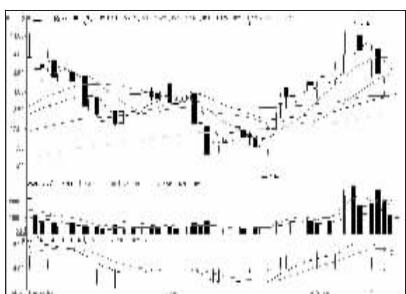
金新农(002548):多头进场,持股



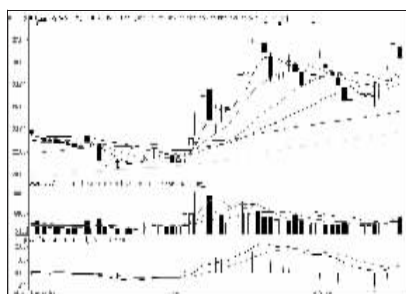
中国平安(601318):中期向好,持股为宜



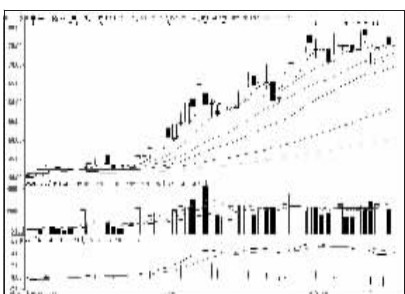
中达股份(600626):放量突破,逢低吸纳



上工申贝(600843):震荡走势,观望为主



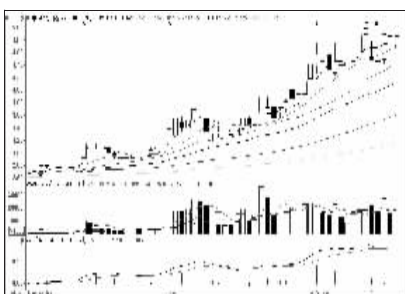
中国卫星(600118):量能不济,减仓回避



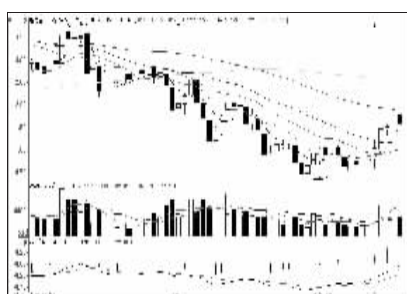
中国平安(601318):中期向好,持股为宜



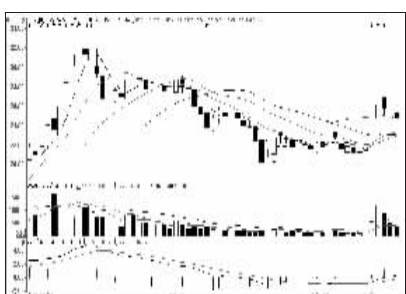
达意隆(002209):震荡向上,持股不追



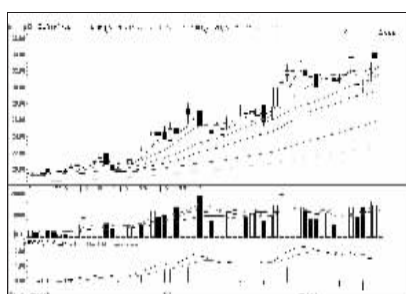
中国银行(601988):窄幅整理,观望为主



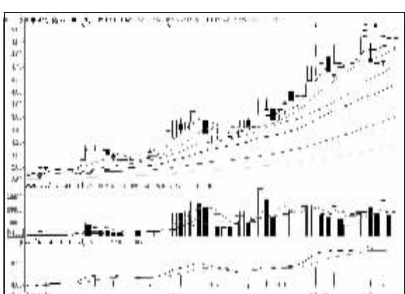
惠博普(002554):上档压力大,短线高抛



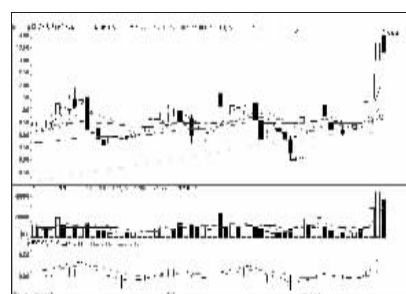
东方电缆(603606):买气不足,逢高出局



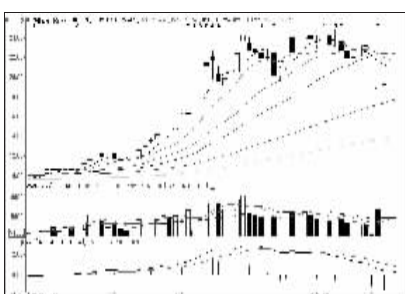
中国太保(601601):多头格局,持股为主



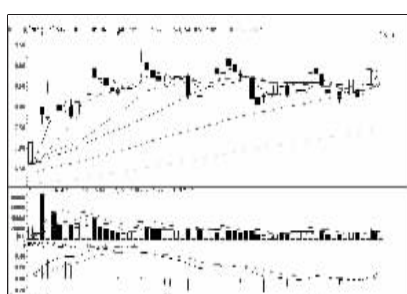
中国银行(601988):窄幅整理,观望为主



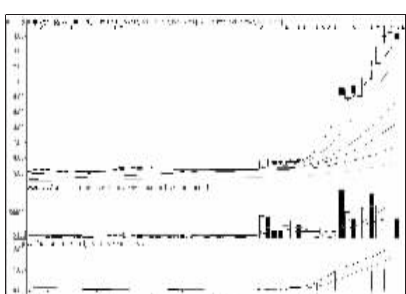
瑞泰科技(002066):突破平台,逢低吸纳



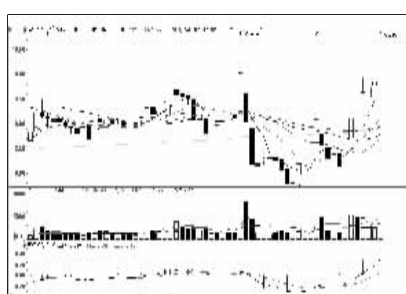
海通证券(600837):整理未完,暂时回避



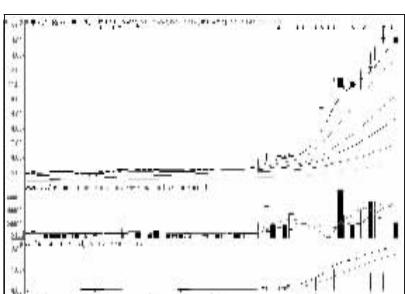
交运股份(600676):放量涨停,看高一线



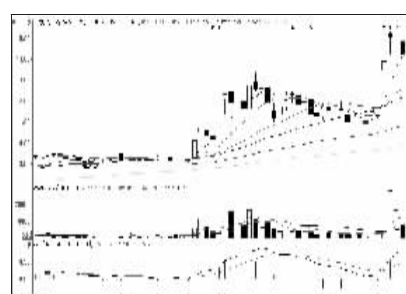
中国南车(601766):涨幅过大,离场观望



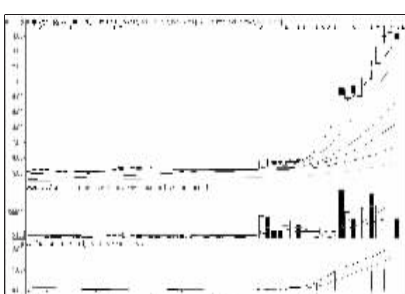
中达股份(600626):放量突破,逢低吸纳



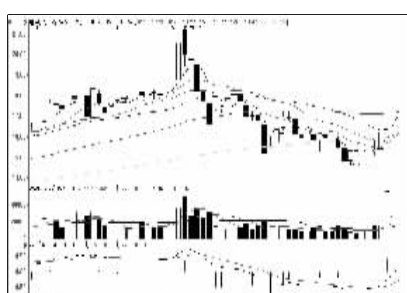
中国北车(601299):买盘趋弱,减仓观望



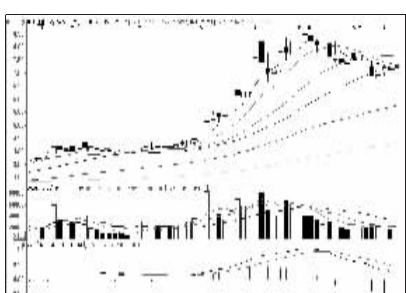
广博股份(002103):仍需整固,持股观望



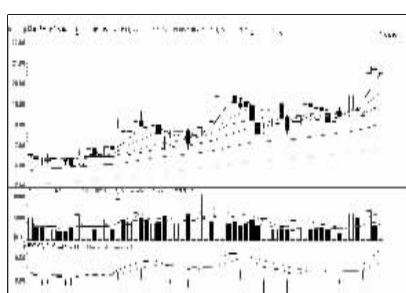
中国南车(601766):涨幅过大,离场观望



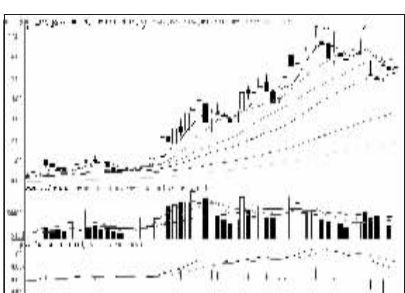
顺威股份(002676):强势拉升,持股为主



中国电建(601669):调整走势,短线离场



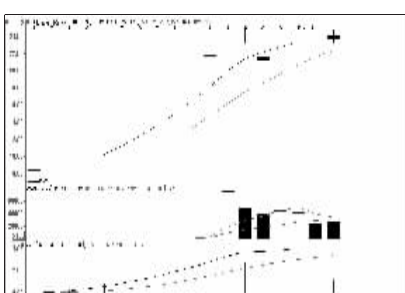
鹏博士(600804):均线多头排列,持股



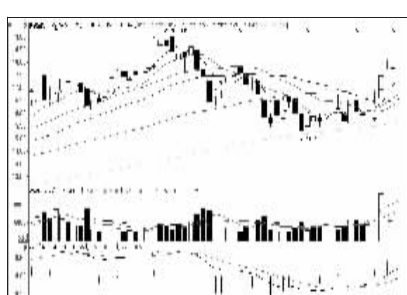
兴业银行(601166):走势趋弱,减仓观望



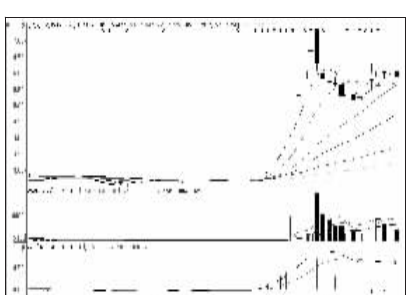
潍柴重机(000880):有望重拾升势,低吸



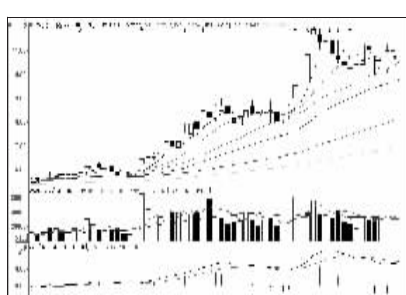
国信证券(002736):短线趋弱,减仓观望



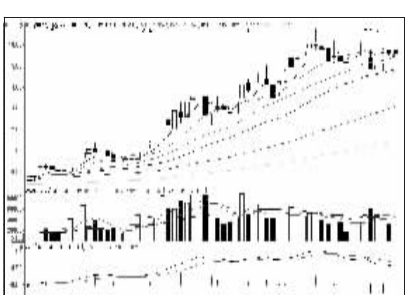
赛轮金宇(601058):量价配合较好,持股



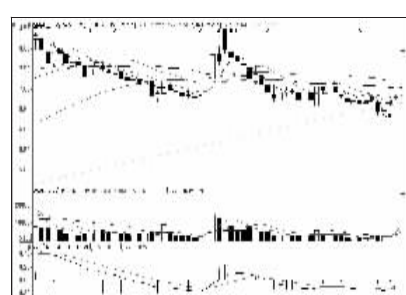
赤天化(600227):回调压力大,逢高出局



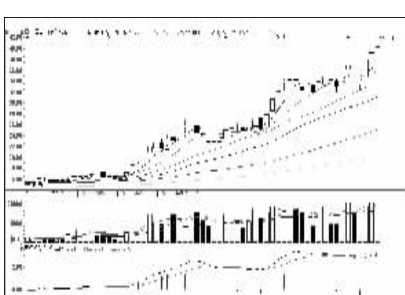
保利地产(600048):强势震荡,持股为主



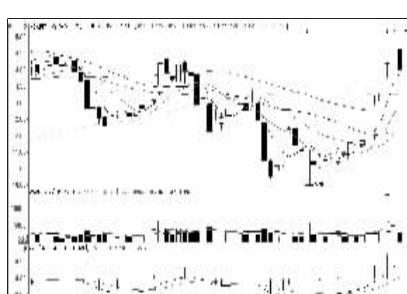
浦发银行(600000):窄幅整理,观望为主



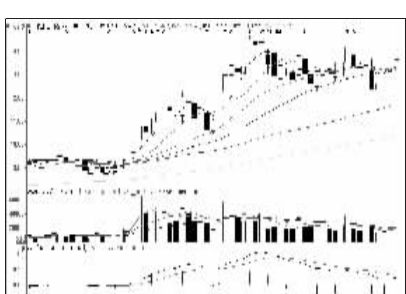
盛屯矿业(600711):调整压力增大,不追



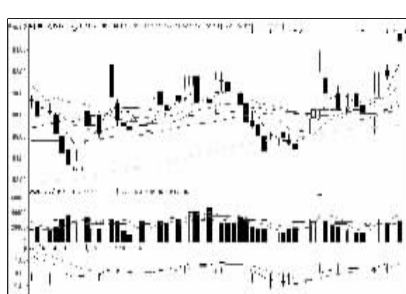
中国人寿(601628):强势特征,逢低介入



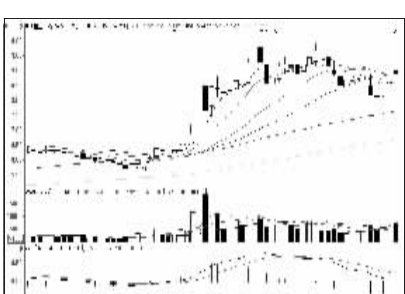
长城集团(600089):多头格局,持股为主



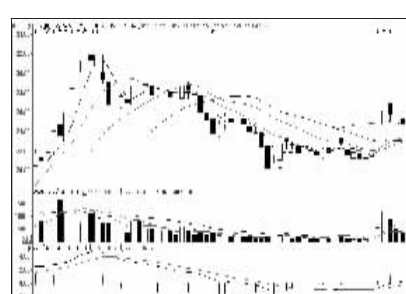
一拖股份(601038):震荡走势,观望为主



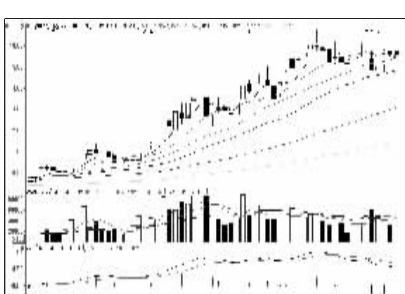
片仔癀(600436):震荡走强,中线持股



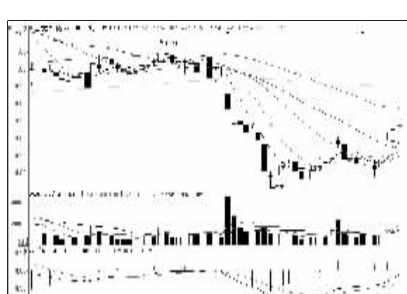
中国重工(601989):整体走势,观望为主



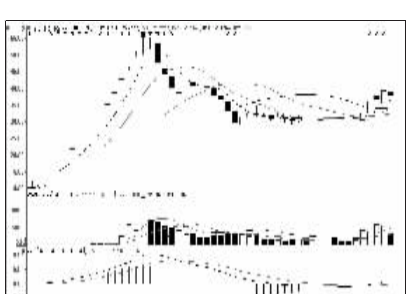
东方电缆(603606):买气不足,逢高出局



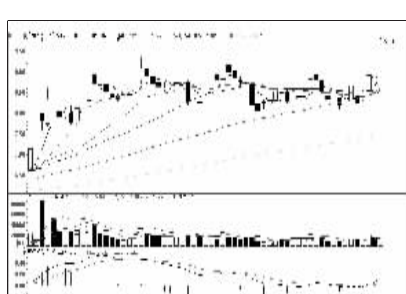
浦发银行(600000):窄幅整理,观望为主



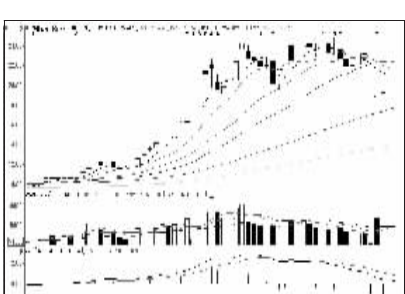
上海物贸(600822):年线附近或需整固



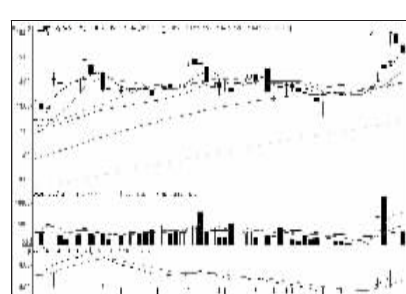
宁波精达(603088):仍有调整压力,减仓



交运股份(600676):放量涨停,看高一线



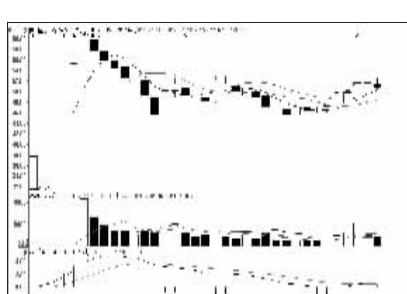
海通证券(600837):整理未完,暂时回避



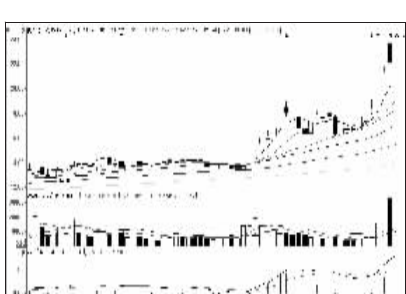
日上集团(002593):止步前高,减仓观望



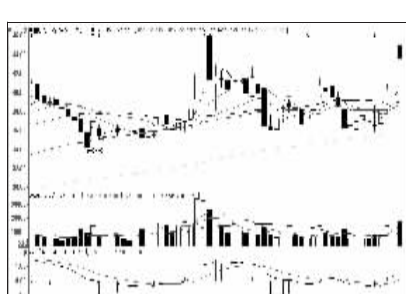
南京港(002040):多头格局,逢低介入



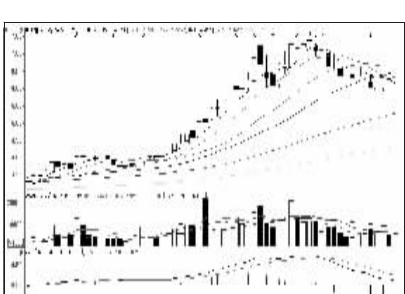
柳州医药(603368):上攻管力,减仓操作



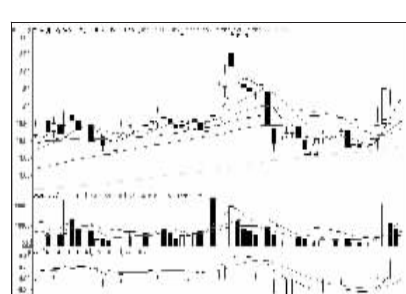
贵人鸟(603555):需要整固,持股不追



中直股份(600038):强势格局,持股为主



中国建筑(601668):走势偏弱,短线回避



南京港(002040):多头格局,逢低介入



看股票 买彩票  
全搞定  
大智慧手机版  
d.wapgw.cn