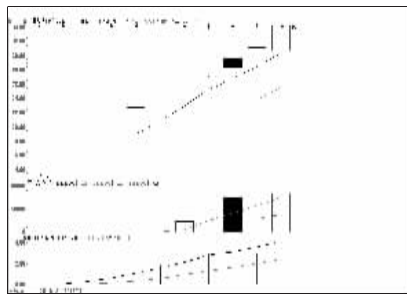


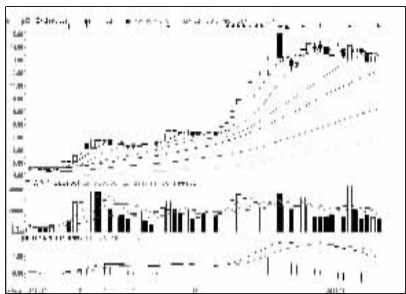
## 股东人数增减前10

股东人数减少前10



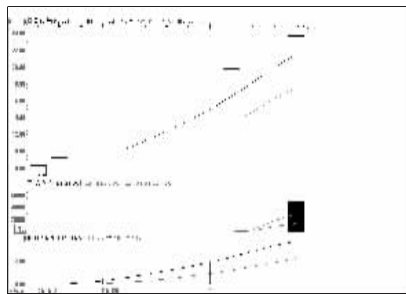
正业科技 (000410):短线涨幅大,谨慎

股东人数增加前10



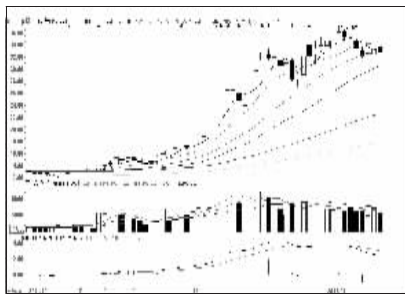
中国交建 (601800):整理为主,观望为主

资金流入金额前10



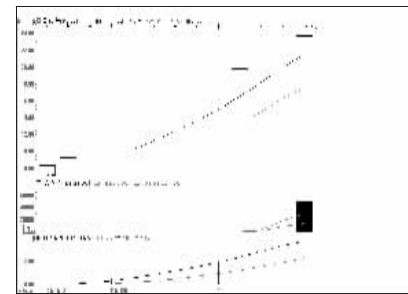
国信证券 (002736):回调整理可能性大

资金流出金额前10



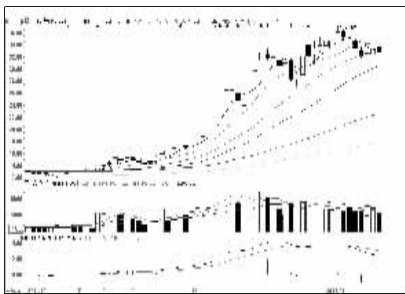
中信证券 (600030):上行能量萎缩,出货

成交突增前10

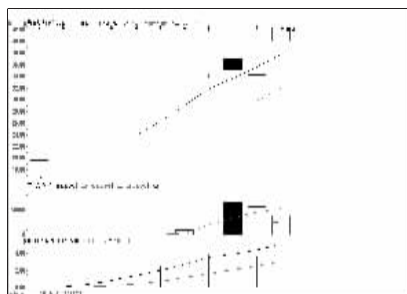


国信证券 (002736):回调整理可能性大

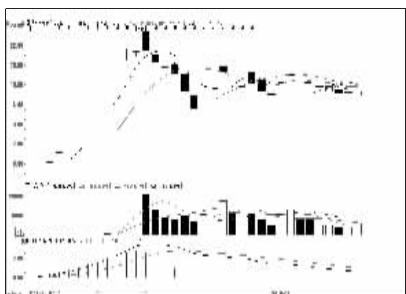
成交金额前8



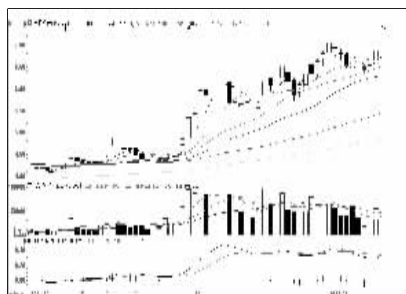
中信证券 (600030):上行能量萎缩,出货



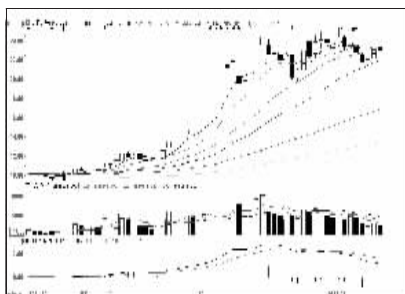
迎南科技 (000412):短线涨幅大,谨慎



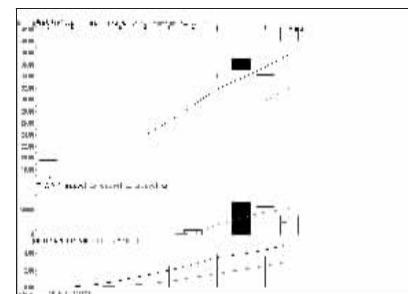
福达股份 (603166):弱势格局,减仓离场



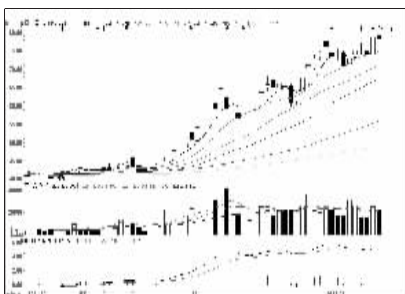
交通银行 (601328):谨防回调,不追涨



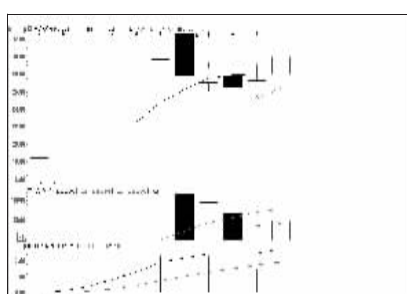
海通证券 (600837):短线机会仍不大



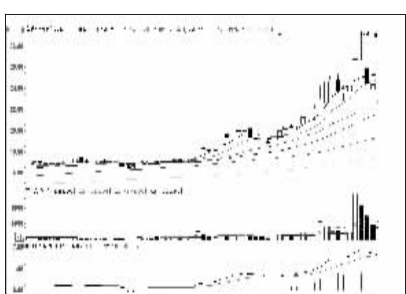
迎南科技 (000412):短线涨幅大,谨慎



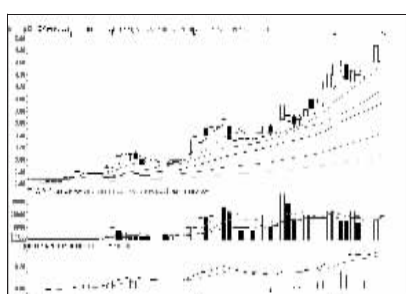
中国平安 (601318):冲高回落,谨防调整



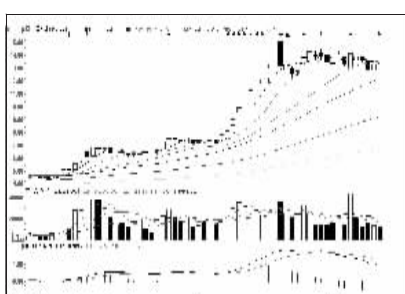
金盾股份 (000411):震荡换手,观望为宜



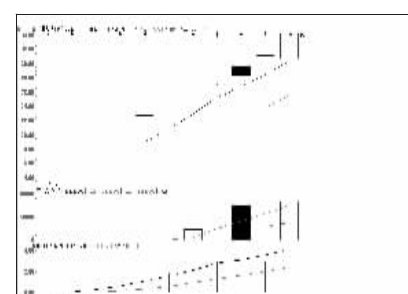
宝诚股份 (600892):上升趋势将维持



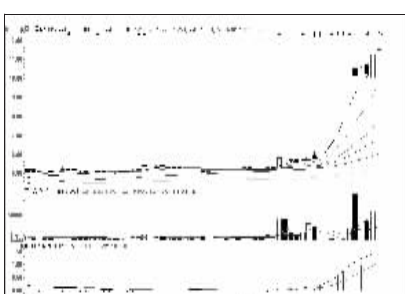
中国银行 (601988):多头市道,继续持有



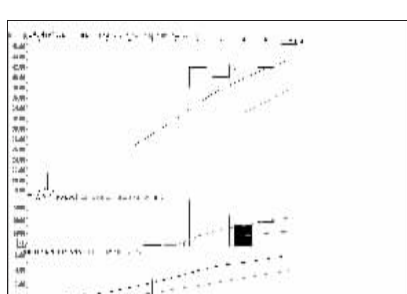
中国交建 (601800):整理为主,观望为主



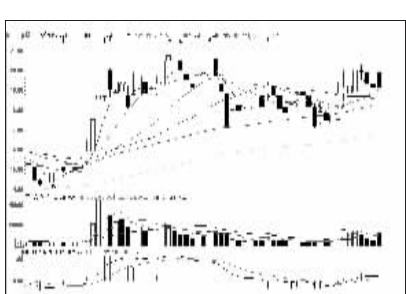
正业科技 (000410):短线涨幅大,谨慎



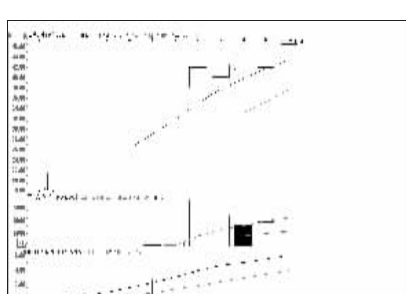
中国南车 (601766):强势格局,继续持有



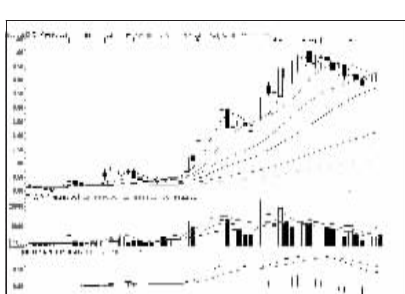
南威软件 (603636):买气减弱,强弩之末



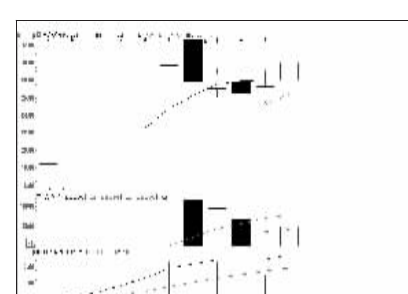
应流股份 (603308):短线止升回落



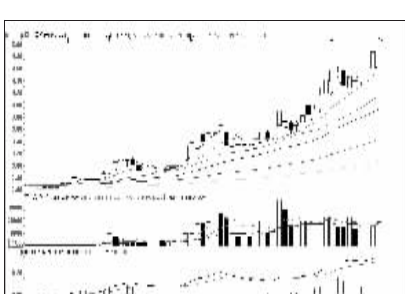
南威软件 (603636):买气减弱,强弩之末



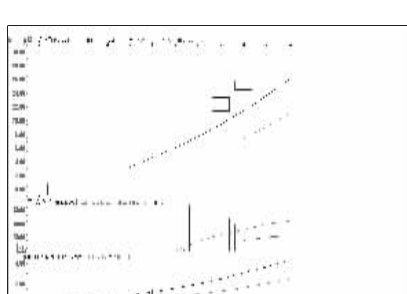
民生银行 (600016):回调企稳,短线观望



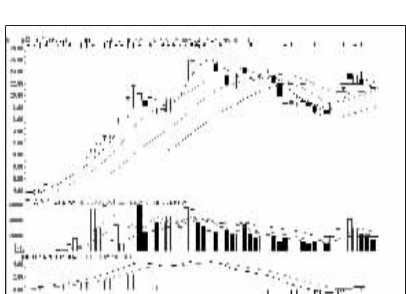
金盾股份 (000411):震荡换手,观望为宜



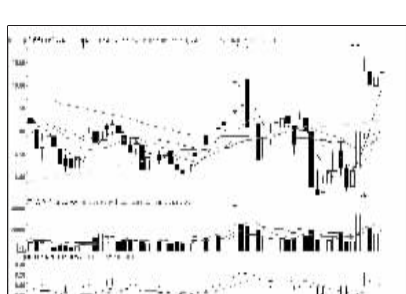
中国银行 (601988):多头市道,继续持有



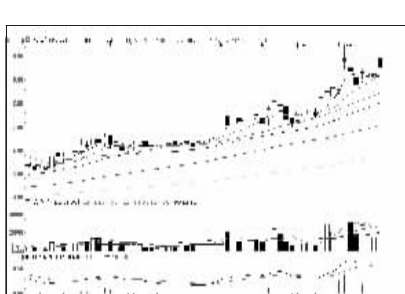
中矿资源 (002738):连续涨停,继续持有



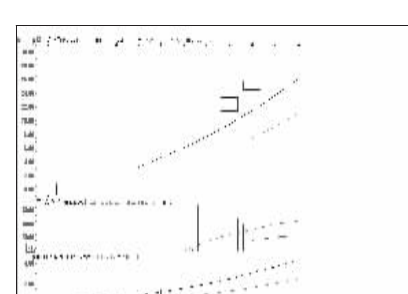
兰石重装 (603169):主力实力强大



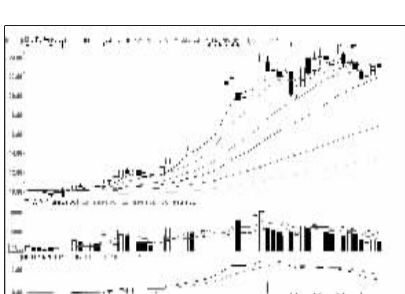
宁波韵升 (603666):有望继续走强,关注



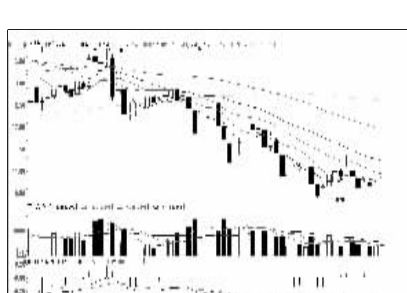
上海电气 (601727):短线或有回调



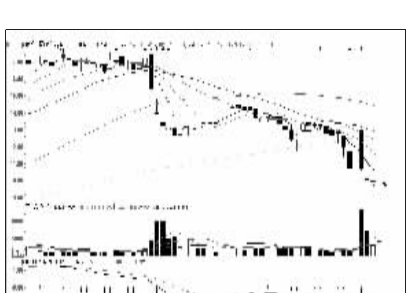
中矿资源 (002738):连续涨停,继续持有



海通证券 (600837):短线机会仍不大



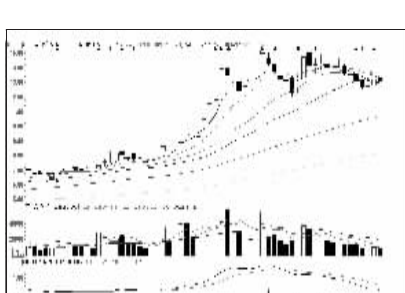
惠博普 (002554):短期仍将走弱,离场



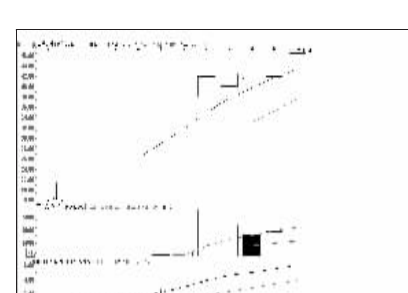
鹏欣资源 (600490):有望反弹,暂时观望



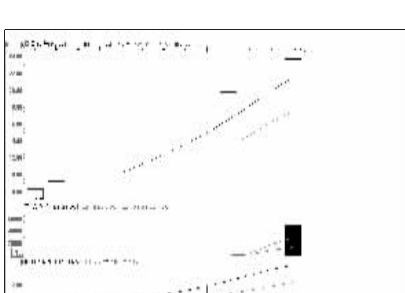
三安光电 (600703):上涨格局,持有为宜



太平洋 (601099):弱势格局,离场为宜



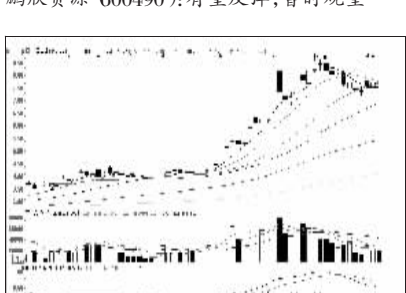
南威软件 (603636):买气减弱,强弩之末



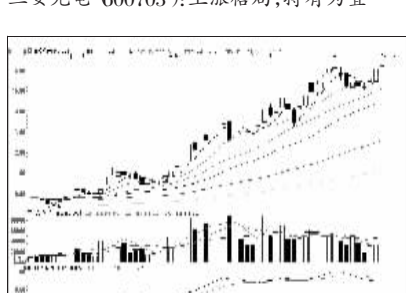
国信证券 (002736):回调整理可能性大



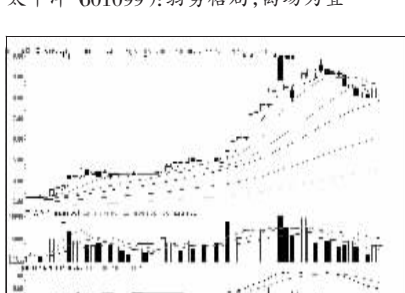
海博股份 (600708):形态需要巩固,持有



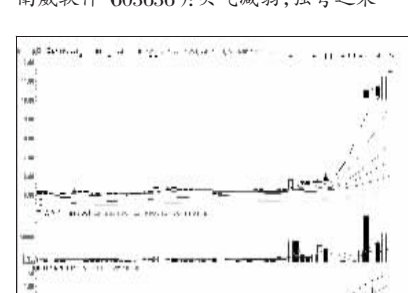
中国电建 (601669):上涨回调,逢低介入



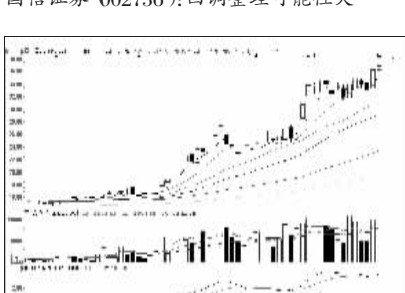
浦发银行 (600000):多头格局,跟进为主



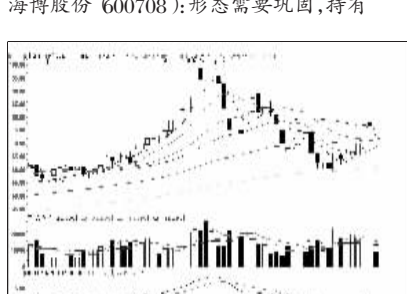
中国中铁 (601390):整理为主,观望为宜



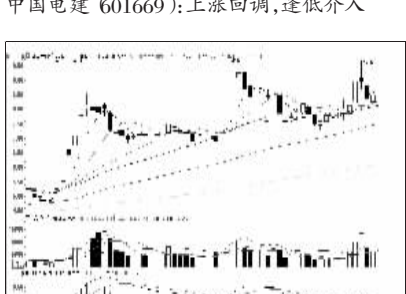
中国南车 (601766):强势格局,继续持有



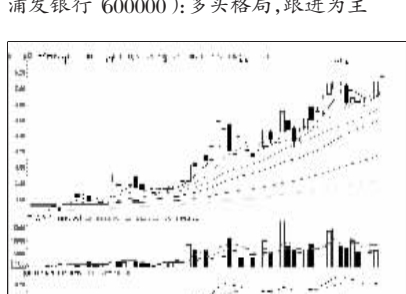
中国人寿 (601628):突破上行,持有为宜



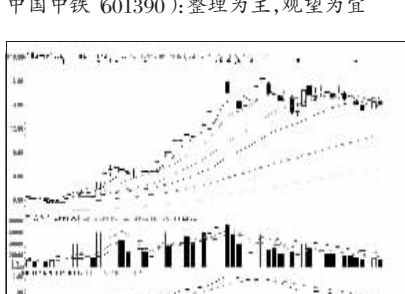
安硕信息 (000380):上有压力,逢高离场



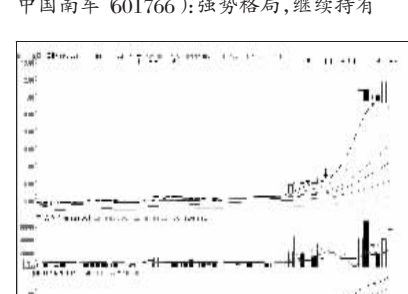
连云港 (601008):震荡盘整态势,不跟



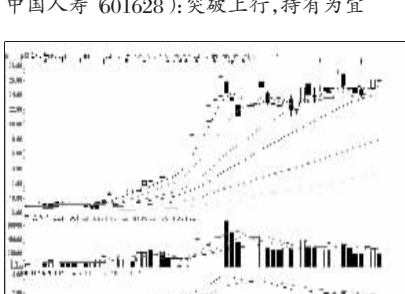
工商银行 (601398):携量上行,持有为宜



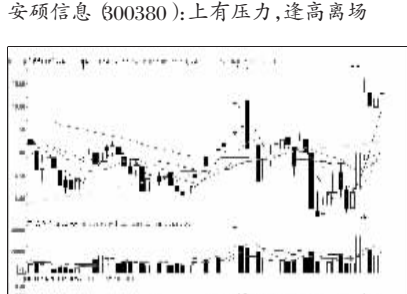
兴业证券 (601377):横盘整理,观望为宜



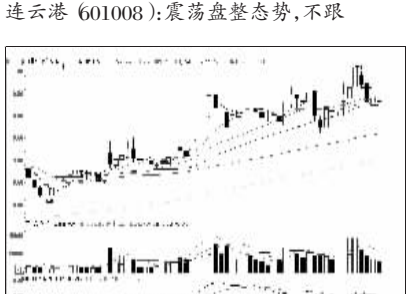
中国北车 (601299):强势格局,继续持有



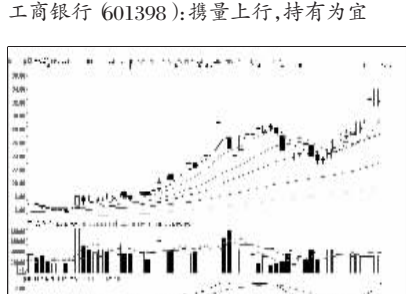
华泰证券 (601688):上攻能量不足,出货



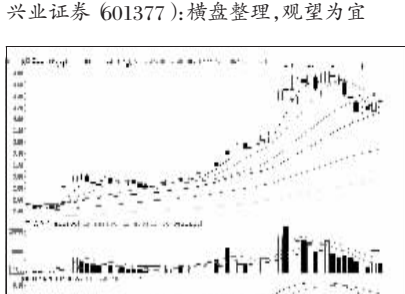
宁波韵升 (603666):有望继续走强,关注



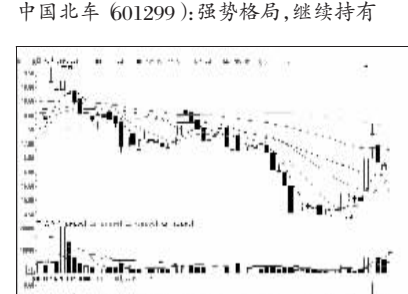
水井坊 (600779):主力小幅洗盘,吸纳



用友软件 (600588):量能萎缩,兑现收益



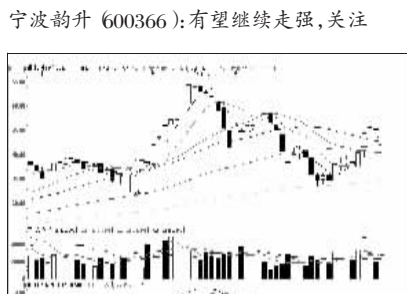
国电电力 (600795):短期走弱,出局为宜



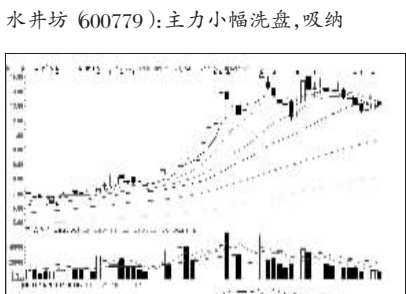
上海普天 (600680):上涨态势良好,持有



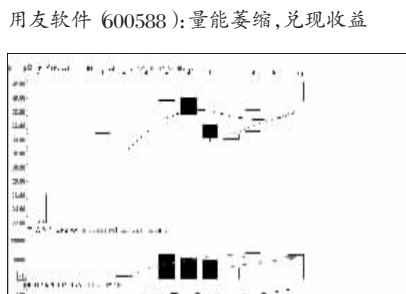
精华制药 (002349):涨势未尽,可入为主



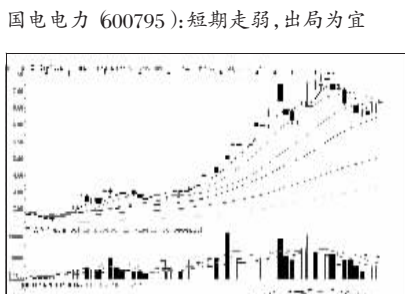
鼎捷软件 (000378):多头格局,建议介入



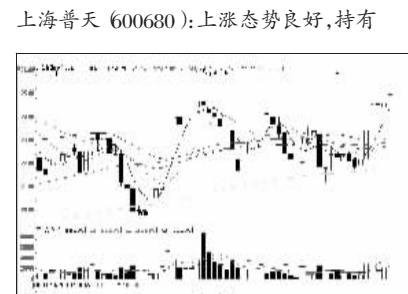
太平洋 (601099):弱势格局,离场为宜



高能环境 (603588):涨幅较大,短线谨慎



中国建筑 (601668):整理为主,近期观望



精华制药 (002349):涨势未尽,可入为主

看股票 买彩票 全搞定 大智慧手机版 d.wapgw.cn