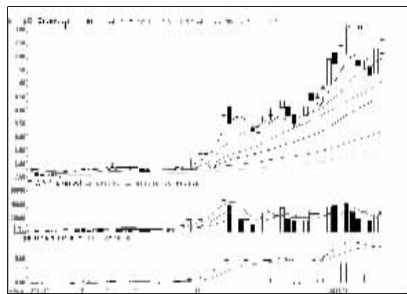


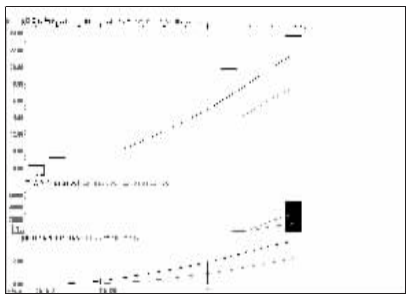
沪深10大权重股

沪市10大权重

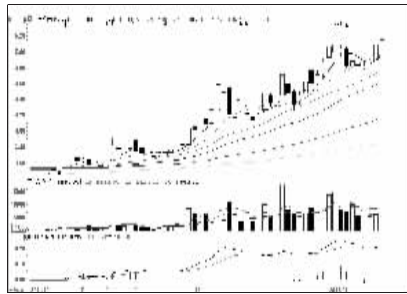


中国石油(601857):谨防回调,短线不跟

深市10大权重



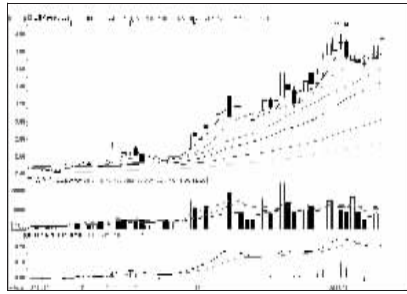
国信证券(002736):回调整理可能性大



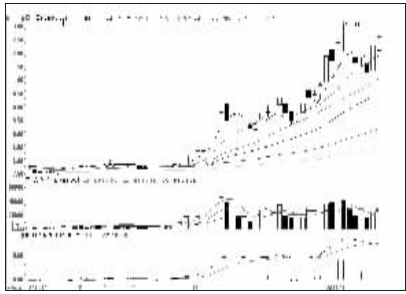
工商银行(601398):携量上行,持有为宜



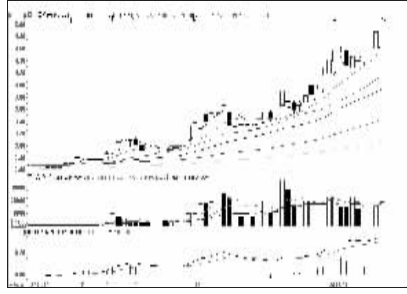
平安银行(000001):上攻量能不足,观望



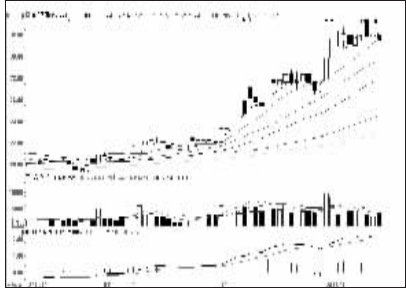
农业银行(601288):小阳连涨,看高一线



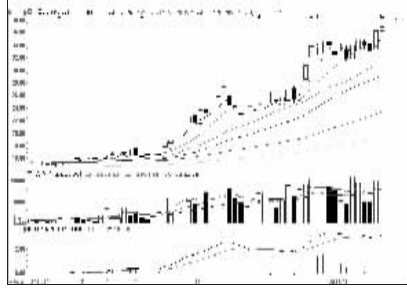
广发证券(000776):横盘整理,观望为宜



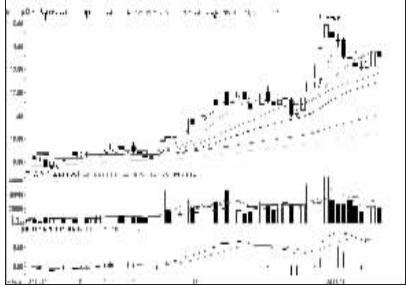
中国银行(601988):多头市道,继续持有



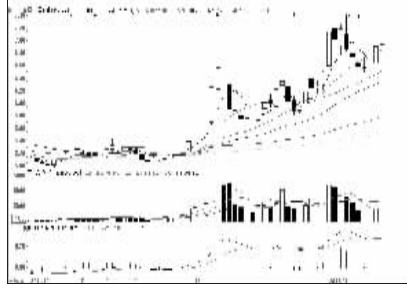
美的集团(000333):高位盘整,持股观望



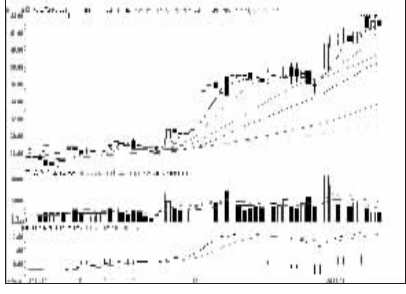
中国人寿(601628):突破上行,持有为宜



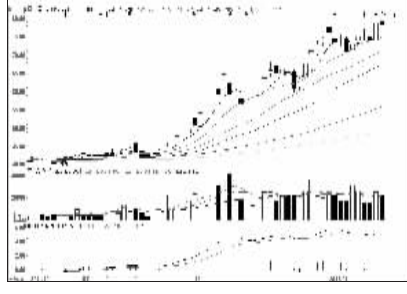
万科A(000002):上攻量能不足,观望



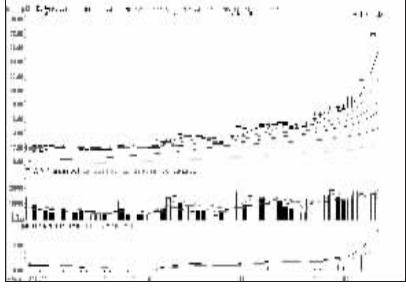
中国石化(600028):关注量能,观望为宜



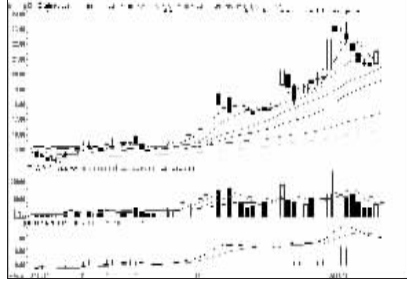
格力电器(000651):高位盘整,持股观望



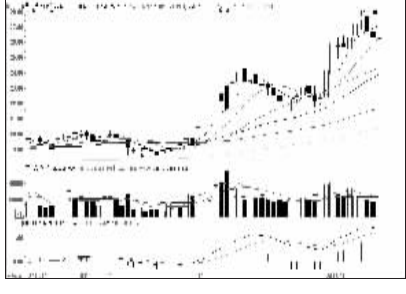
中国平安(601318):冲高回落,谨防调整



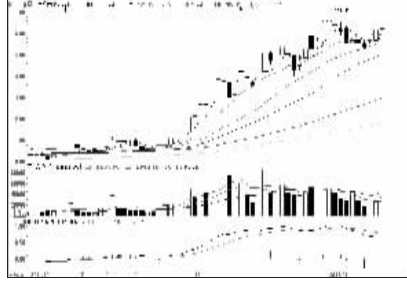
宏源证券(000562):连续停牌



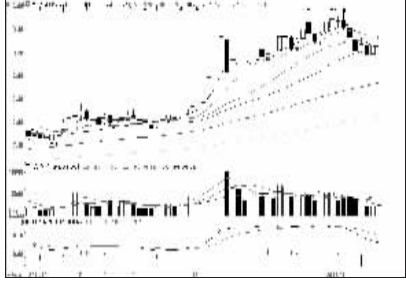
中国神华(601088):上涨无力,谨慎为宜



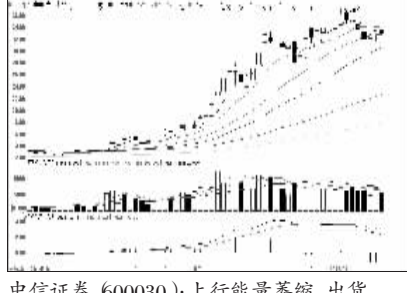
海康威视(002415):高位震荡,谨防回调



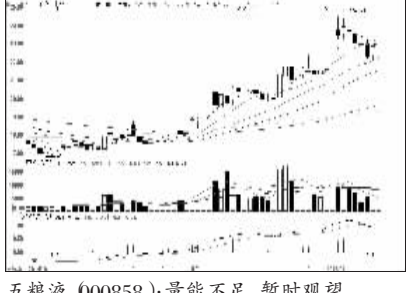
招商银行(600036):上行有阻力,高抛



京东方A(000725):买气不足,短期观望



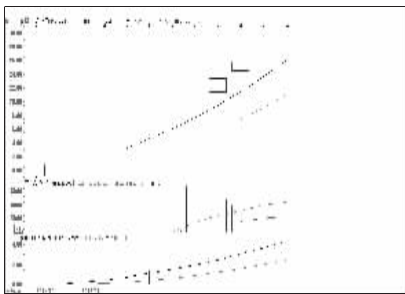
中信证券(600030):上行能量萎缩,出货



五粮液(000858):量能不足,暂时观望

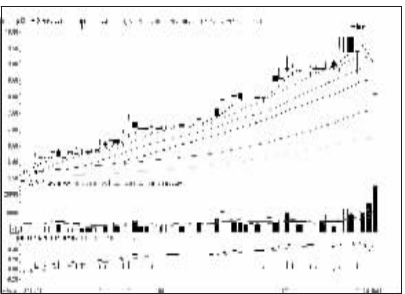
周涨跌幅前10

涨幅前10

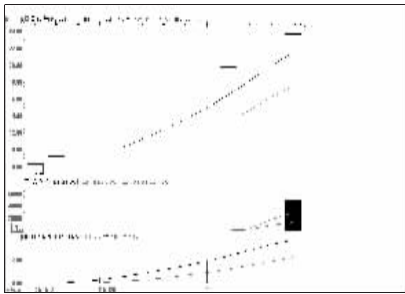


中矿资源(002738):连续涨停,继续持有

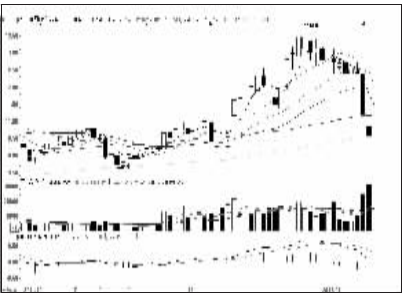
跌幅前10



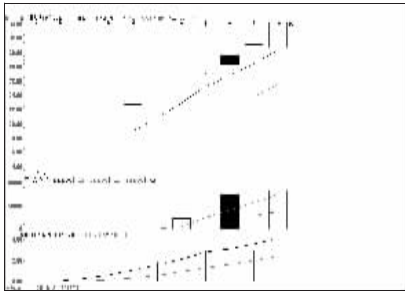
合金投资(000633):或将企稳,博弈反弹



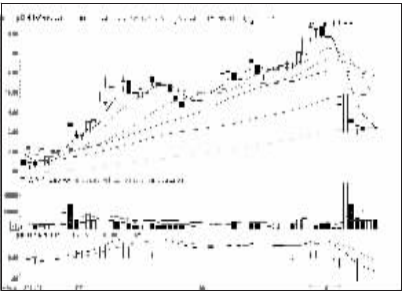
国信证券(002736):回调整理可能性大



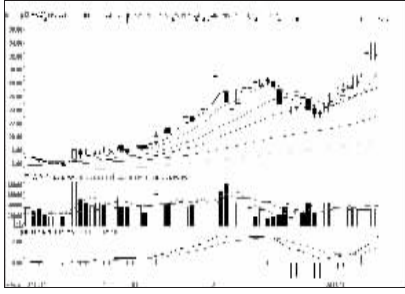
合康变频(000048):有望企稳,低位介入



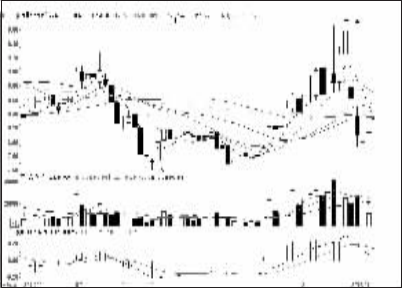
正业科技(000410):短线涨幅大,谨慎



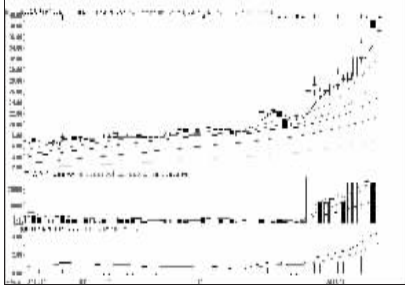
准油股份(002207):下跌格局,出局为宜



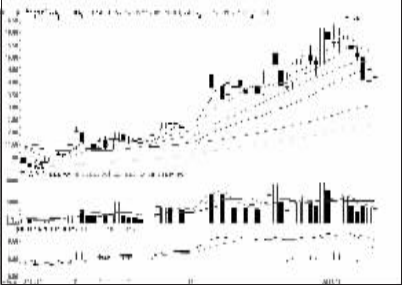
用友软件(600588):量能萎缩,兑现收益



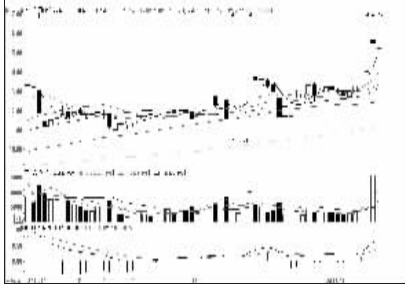
凤凰股份(600716):弱势格局,换股操作



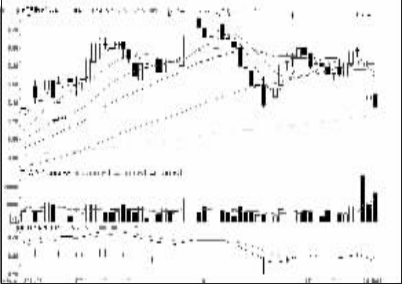
迦南科技(000412):短线涨幅大,谨慎



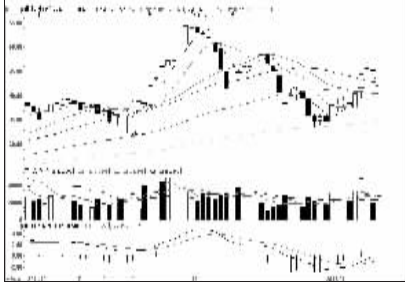
中色股份(000758):回调充分,博弈反弹



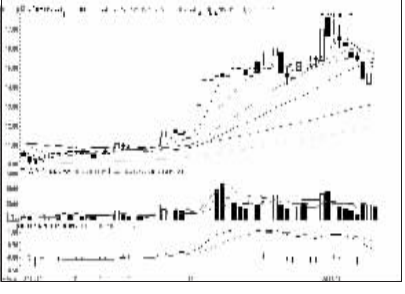
如意集团(000626):形态良好,持有为宜



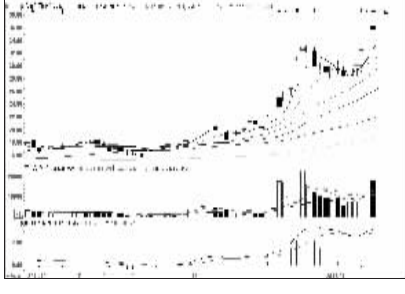
莱茵置业(000558):下跌格局,注意止损



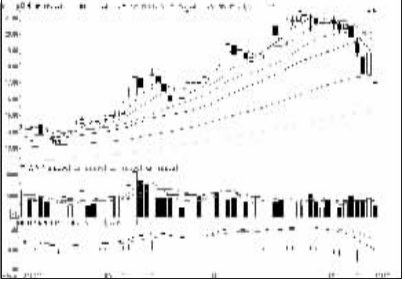
鼎捷软件(000378):多头格局,建议介入



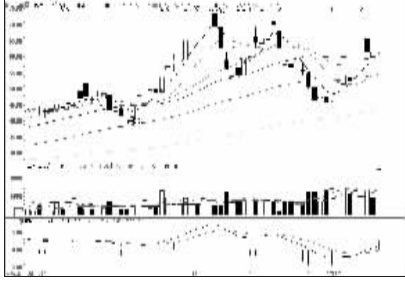
铜陵有色(000630):回调充分,或将企稳



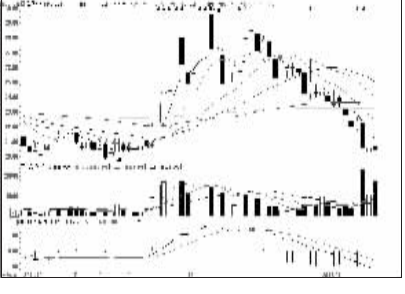
永大集团(002622):多头格局,介入为主



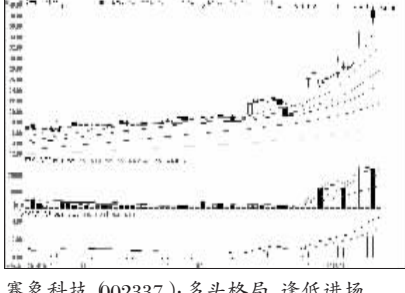
漫步者(002351):重组生变,注意止损



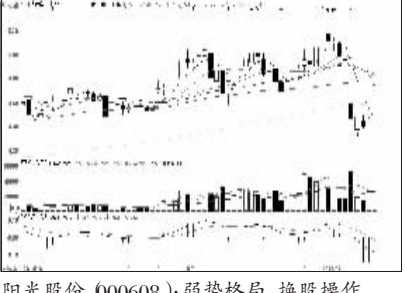
中科金财(002657):形态需要巩固,建议持有



华泽钴镍(000693):低位放量,或将企稳



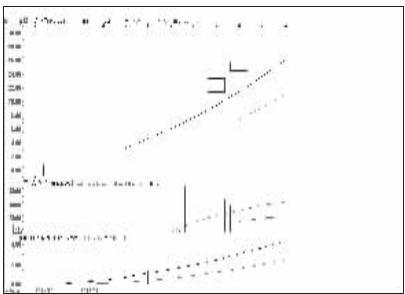
赛象科技(002337):多头格局,逢低进场



阳光股份(000608):弱势格局,换股操作

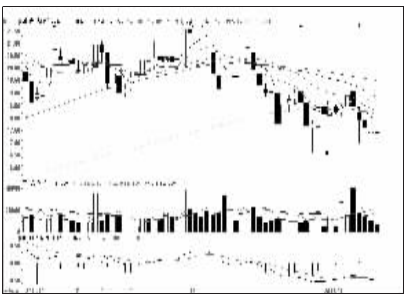
连续涨跌前10

连涨前10

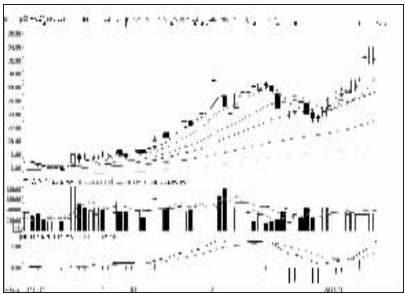


中矿资源(002738):连续涨停,继续持有

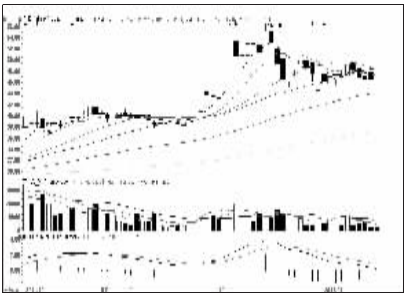
连跌前10



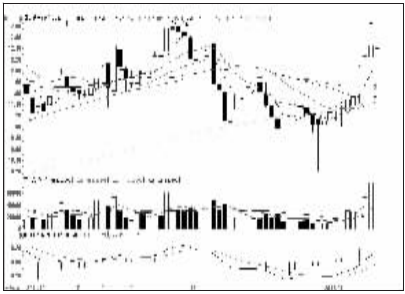
美欣达(002034):弱势格局,离场为主



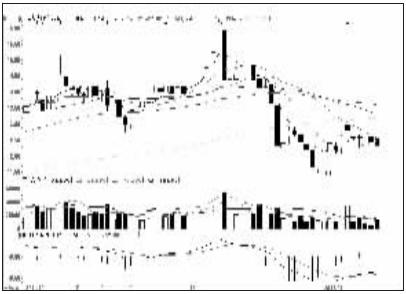
用友软件(600588):量能萎缩,兑现收益



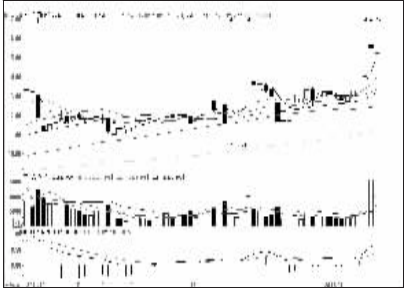
兴源过滤(000266):下跌格局,出局为宜



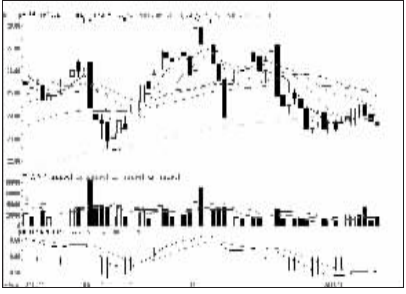
渤海活塞(600960):趋势向好,近期跟入



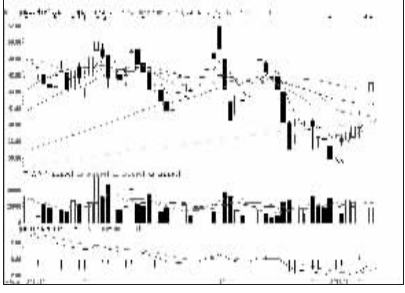
万安科技(002590):继续看淡,出局观望



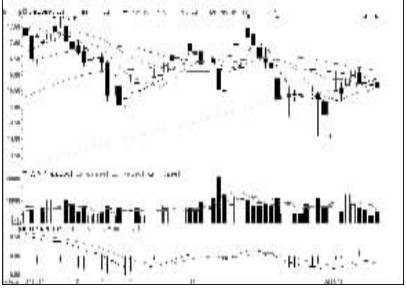
如意集团(000626):形态良好,持有为宜



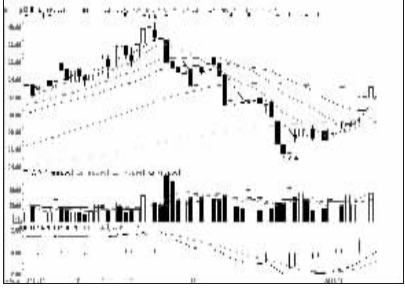
金达威(002626):有继续下行可能



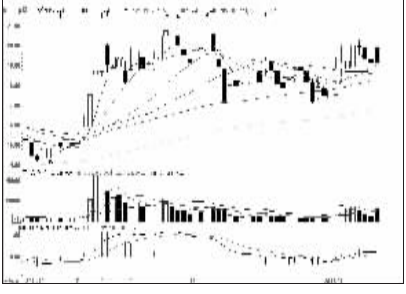
华宇软件(000271):或将突破,可以关注



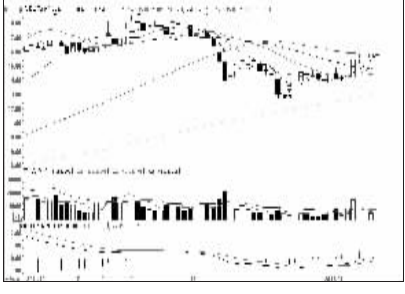
海南海药(000566):盘整态势,近期观望



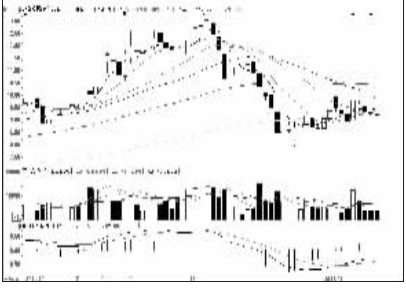
荣之联(002642):强势特征明显



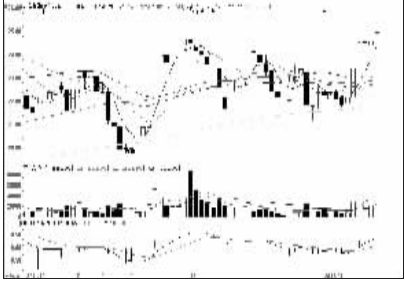
应流股份(603308):短线止升回落



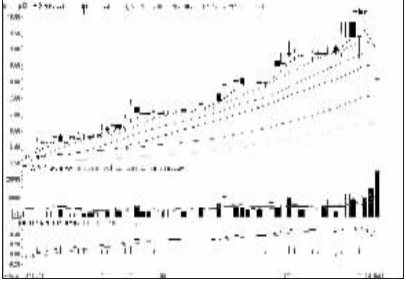
东源电器(002074):多方力量强大,跟进



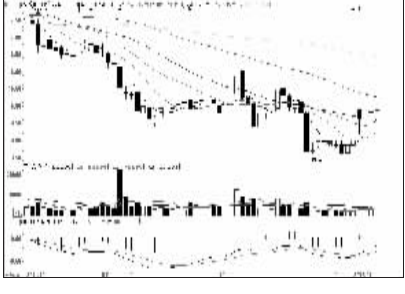
高新发展(000628):横盘整理,观望为主



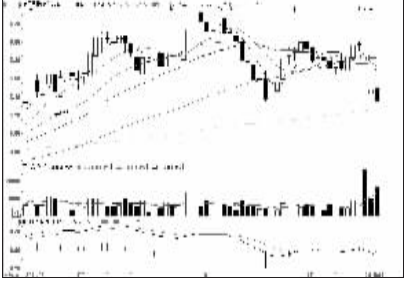
精华制药(002349):涨势未尽,可入为主



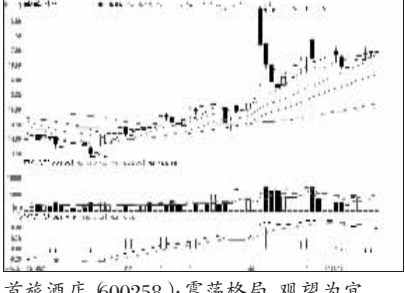
合金投资(000633):或将企稳,博弈反弹



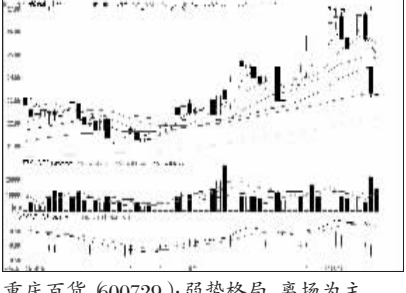
蒙发利(002614):有上行空间,关注



莱茵置业(000558):下跌格局,注意止损



首旅酒店(600258):震荡格局,观望为宜



重庆百货(600729):弱势格局,离场为主