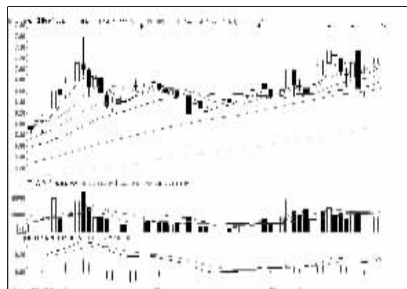


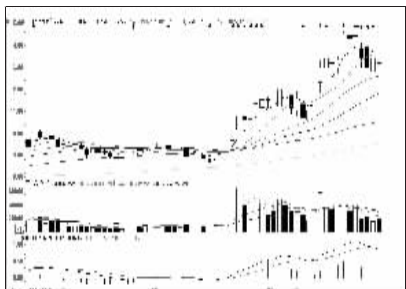
股东人数增减前10

股东人数减少前10



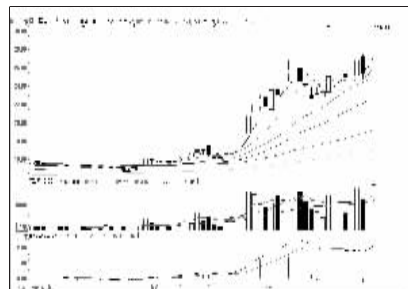
迪康药业 (600466):蓄势充分,建议持有

股东人数增加前10



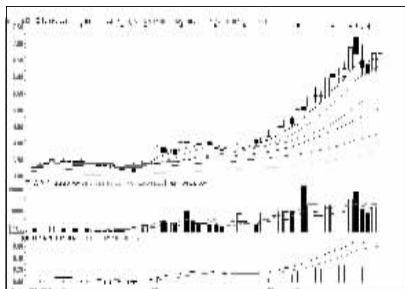
一拖股份 (601038):有继续调整可能

资金流入金额前10



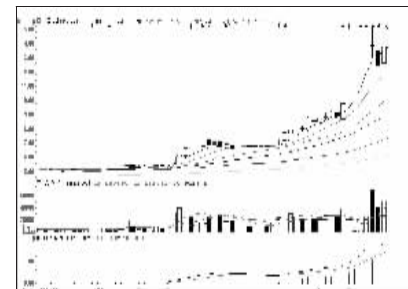
中国人寿 (601628):携量上行,持有所宜

资金流出金额前10



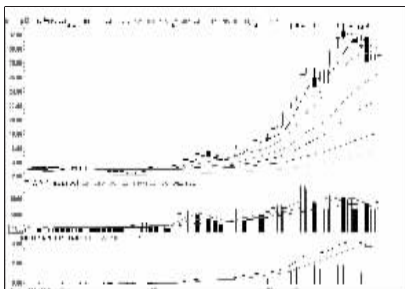
中国建筑 (601668):强势格局,持有所宜

成交突增前10

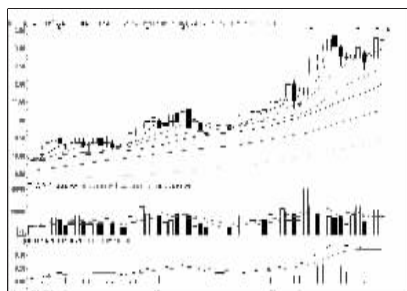


中国铁建 (601186):涨幅可观,持股观望

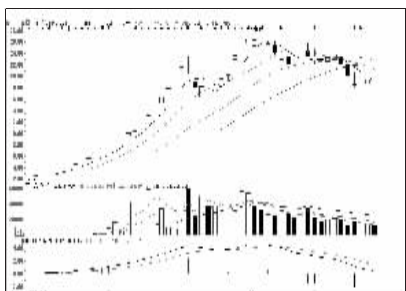
成交金额前8



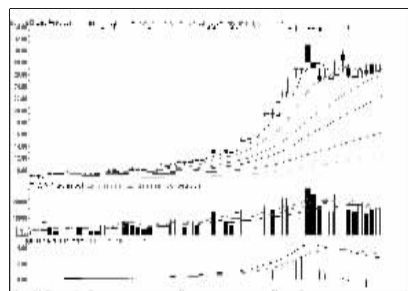
中信证券 (600030):强势格局,持有所宜



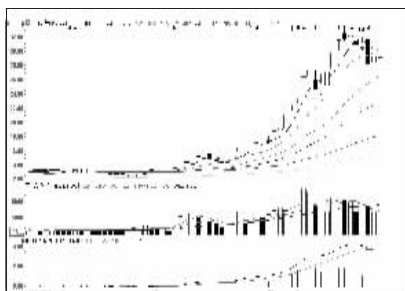
万年青 (000789):强势格局,看高一线



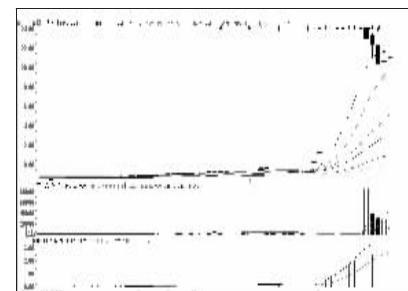
兰石重装 (603169):形态走坏,短期谨慎



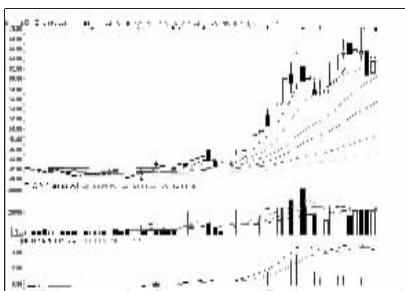
光大证券 (601788):重启升势,持有所宜



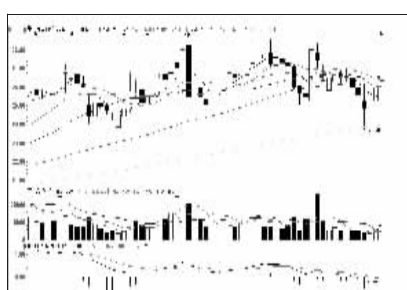
中信证券 (600030):强势格局,持有所宜



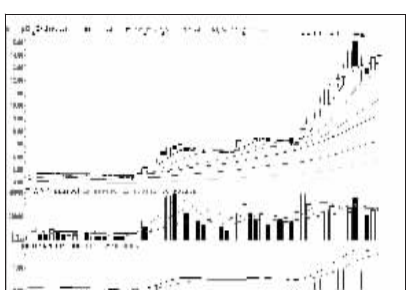
广州友谊 (000987):多方力量强大,关注



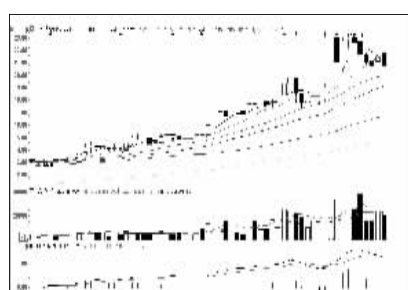
中国平安 (601318):强势格局,看高一线



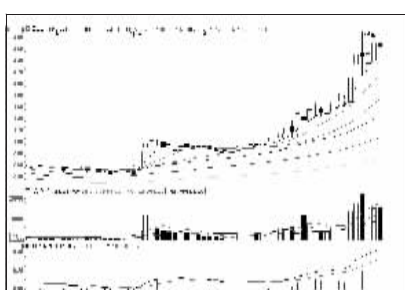
浙江世宝 (002703):蓄势充分,低位介入



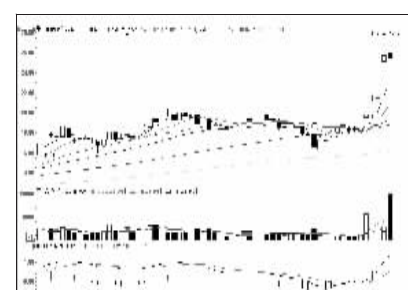
中国交建 (601800):涨幅可观,适当止盈



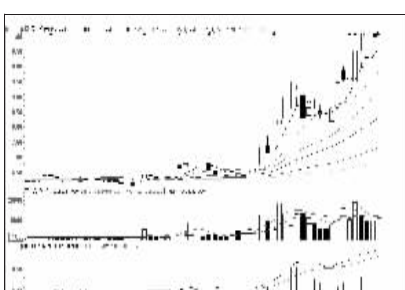
刚泰控股 (600687):回调换手,持有所宜



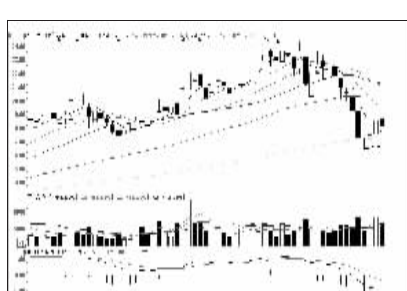
国电电力 (600795):涨幅可观,持股观望



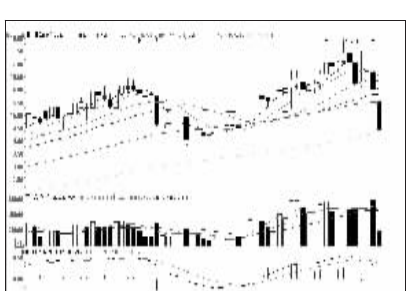
浙江美大 (002677):高位放量,谨慎回调



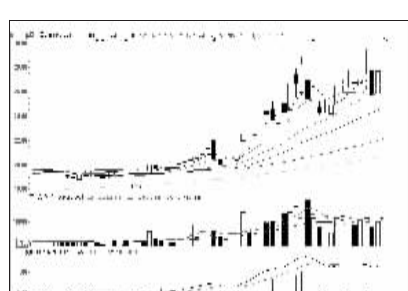
民生银行 (600016):涨幅可观,适当止盈



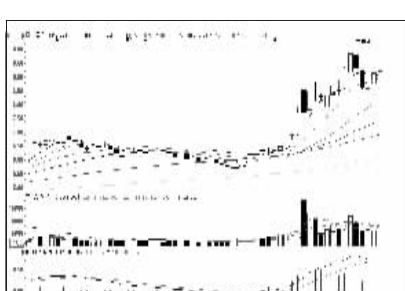
达刚路机 (800103):半年线有支撑,关注



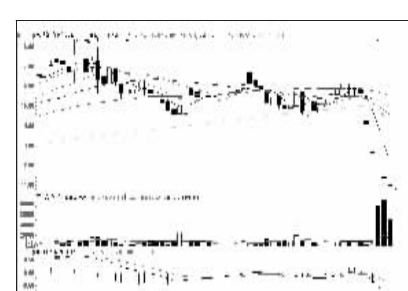
复旦复华 (600624):形态走坏,注意止损



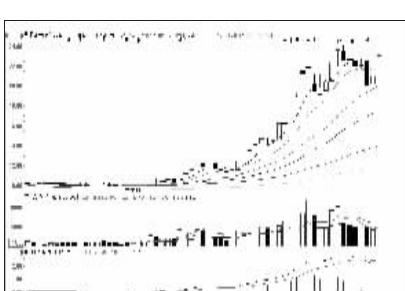
中国太保 (601601):重启升势,继续持有



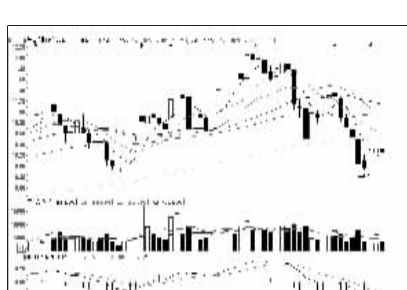
中国重工 (601989):强势格局,持有所宜



铁岭新城 (000809):调整充分,或将企稳



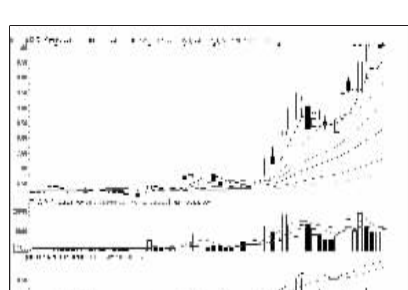
海通证券 (600837):重拾升势,持股观望



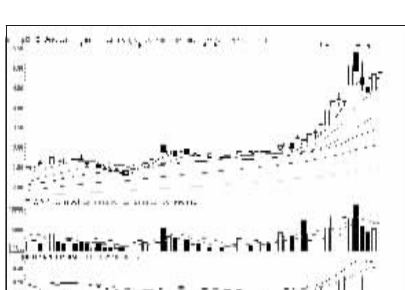
澳洋顺昌 (002245):回调充分,观望为宜



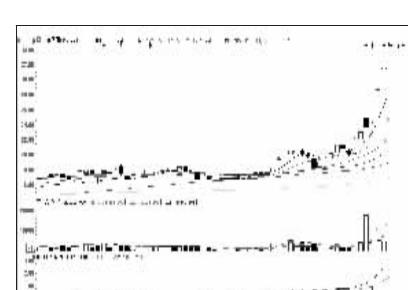
龙建股份 (600853):冲高回落,观望为宜



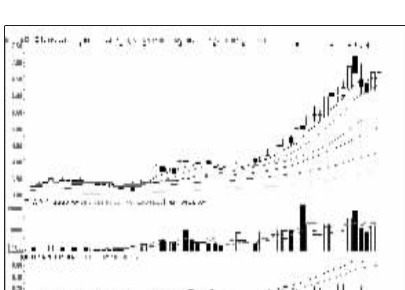
民生银行 (600016):涨幅可观,适当止盈



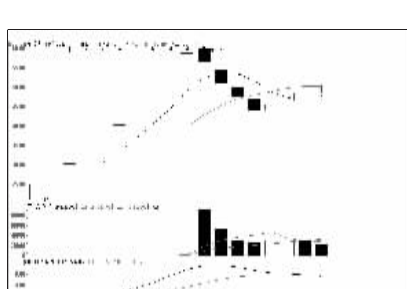
中国中冶 (601618):或将会跳,止盈为主



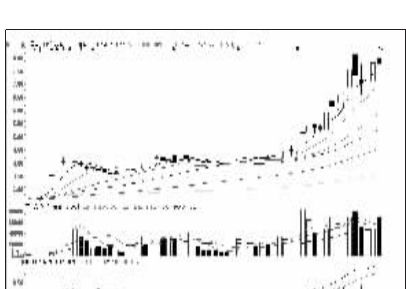
永大集团 (002622):盈利可观,逢高兑现



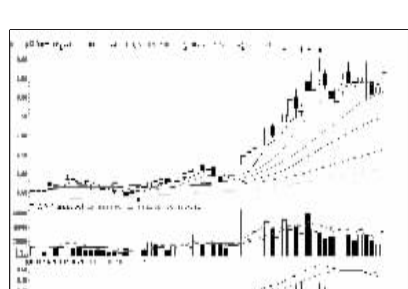
中国建筑 (601668):强势格局,持有所宜



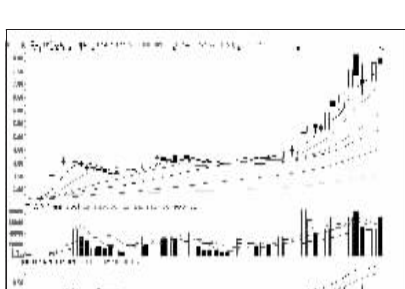
道氏技术 (800409):震荡整理,暂时观望



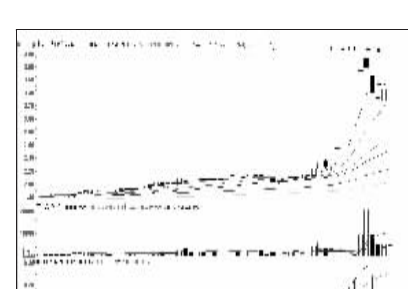
中国电建 (601669):涨幅可观,适当止盈



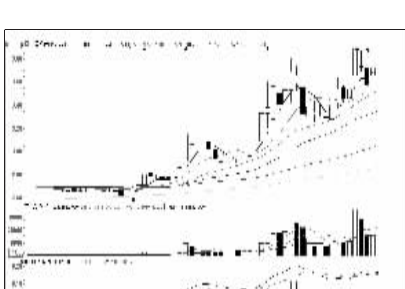
保利地产 (600048):高位震荡,持股观望



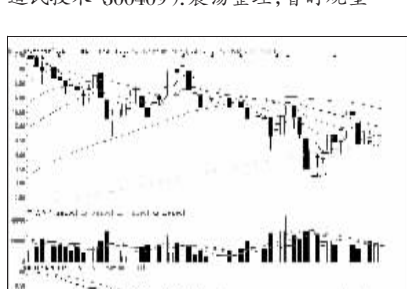
中国电建 (601669):涨幅可观,适当止盈



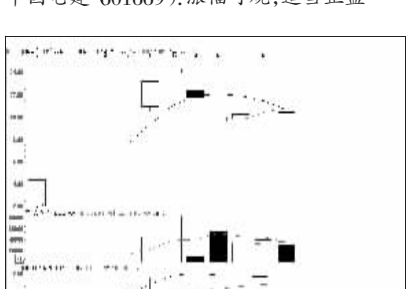
安阳钢铁 (600569):有调整可能,谨慎



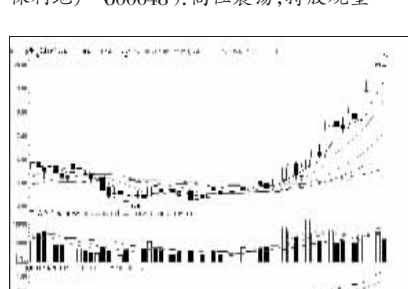
中国银行 (601988):强势格局,继续持有



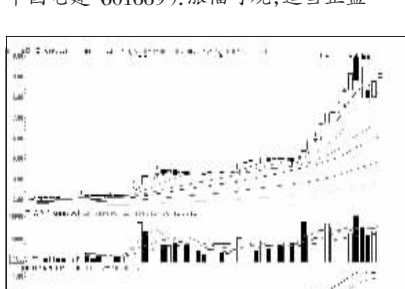
森远股份 (800210):蓄势整理,暂时观望



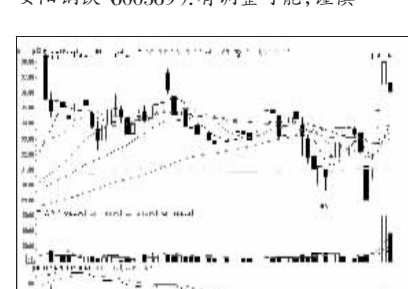
华电重工 (601226):震荡整理,观望为宜



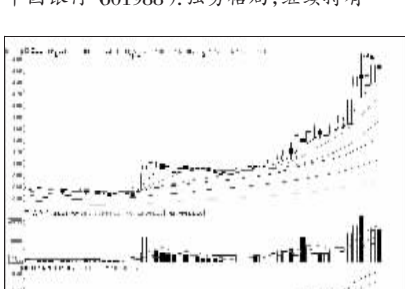
浙江龙盛 (600352):量能萎缩,建议止盈



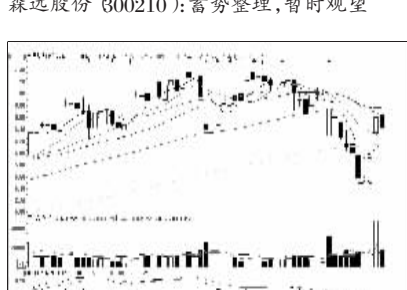
中国中铁 (601390):涨幅可观,适当止盈



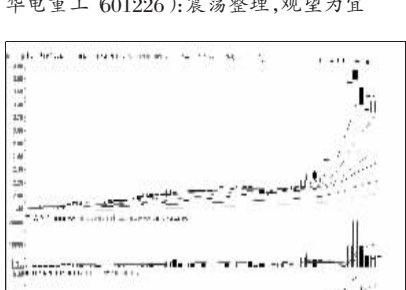
联建光电 (800269):宽幅震荡,观望为宜



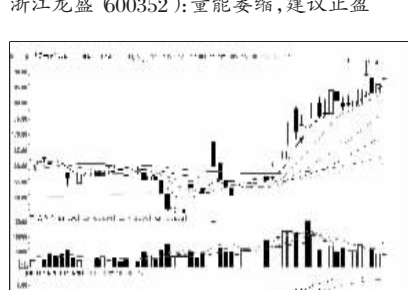
国电电力 (600795):涨幅可观,持股观望



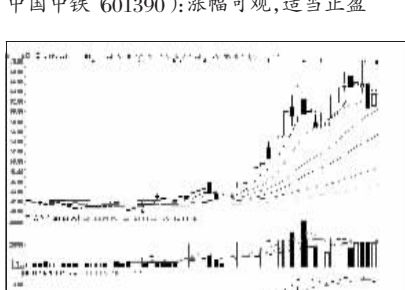
恒星科技 (002132):挑战60日均线,观望



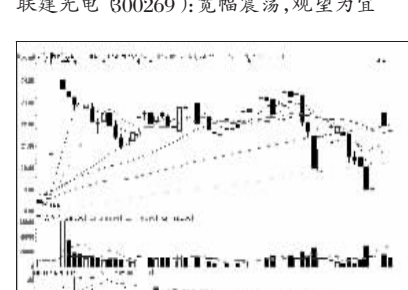
安阳钢铁 (600569):有调整可能,谨慎



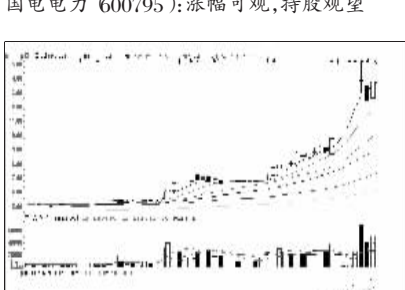
贵州茅台 (600519):上行趋势,继续持有



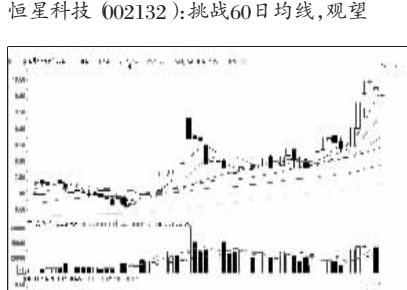
中国平安 (601318):强势格局,看高一线



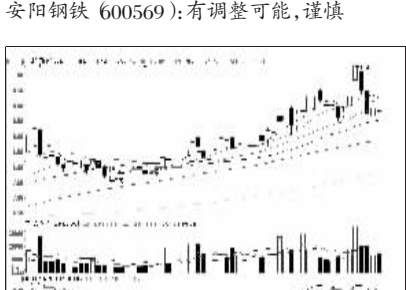
天润乳业 (600419):宽幅震荡,观望为宜



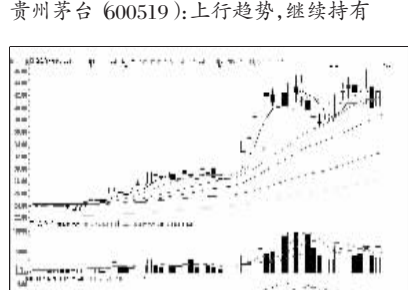
中国铁建 (601186):涨幅可观,持股观望



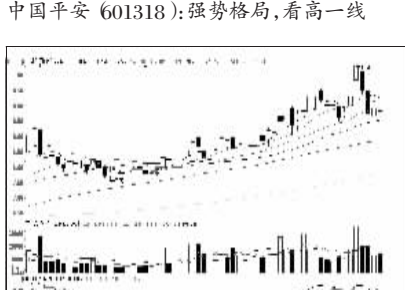
桐昆股份 (601233):强势格局,持有所宜



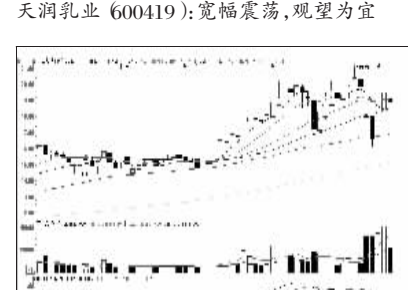
亚盛集团 (600108):回调换手,持股观望



新华保险 (601336):重启升势,看高一线



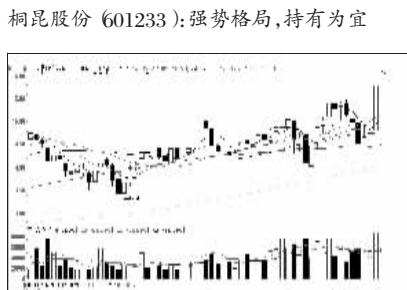
亚盛集团 (600108):回调换手,持股观望



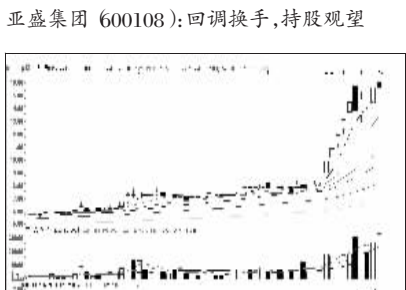
亚太科技 (002540):高位蓄势,暂时观望



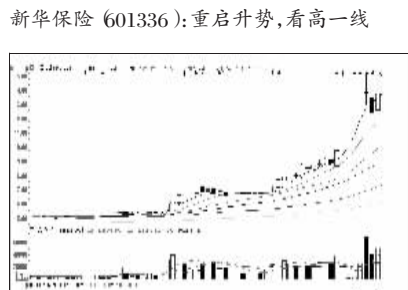
杭州解百 (600814):高位震荡,观望为宜



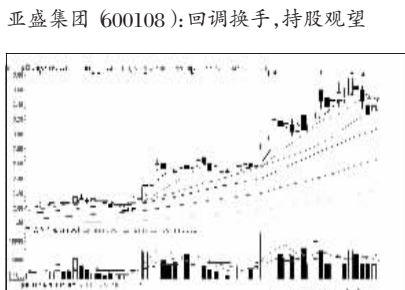
黄山旅游 (600054):蓄势充分,继续持有



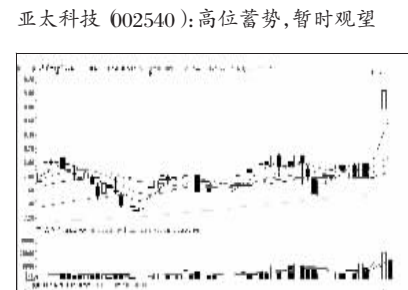
中铁二局 (600528):涨幅可观,适当止盈



中国铁建 (601186):涨幅可观,持股观望



海南航空 (600221):上行趋势,持有所宜



杭州解百 (600814):高位震荡,观望为宜



看股票 买彩票 全搞定 大智慧手机版 d.wapgw.cn