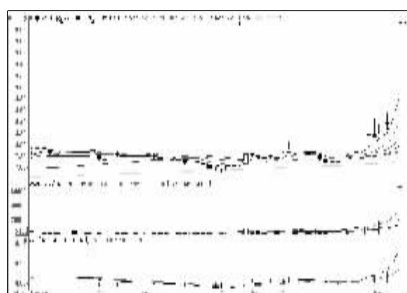


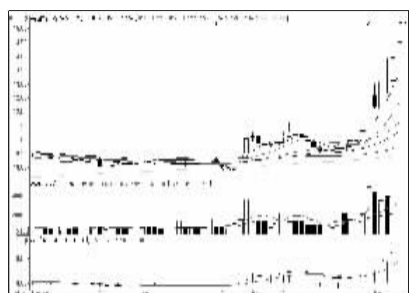
沪深10大权重股

沪市10大权重

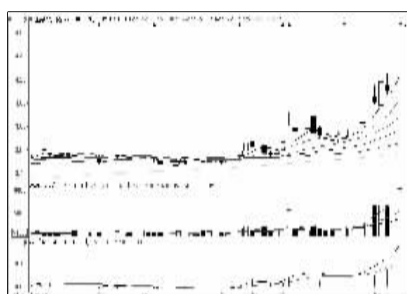


中国石油 (601857): 短线压力增大, 不追

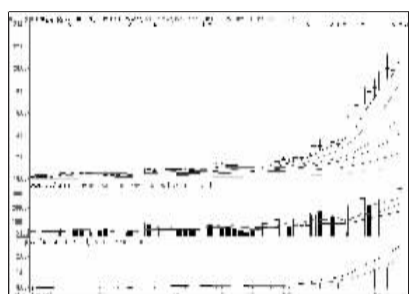
深市10大权重



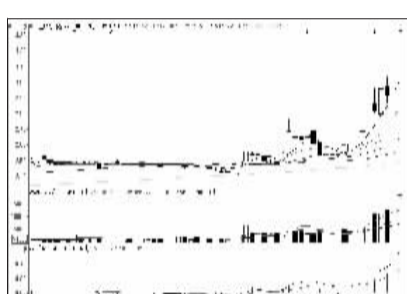
平安银行 (000001): 多头市道, 持股为主



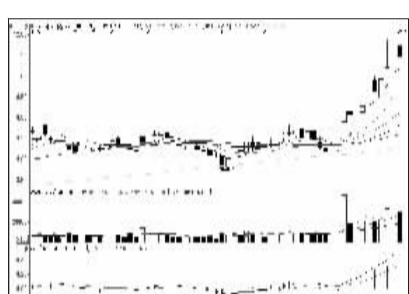
工商银行 (601398): 中线持有, 短线不追



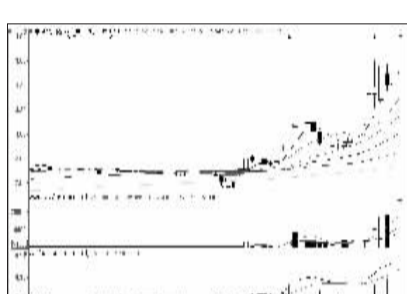
广发证券 (000776): 中线持股, 回调加仓



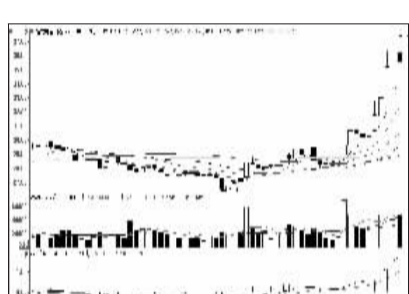
农业银行 (601288): 有回调压力, 持股观望



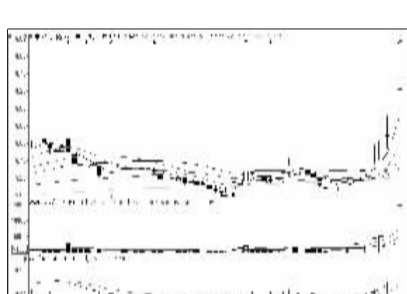
万科A (000002): 多头形态, 逢低介入



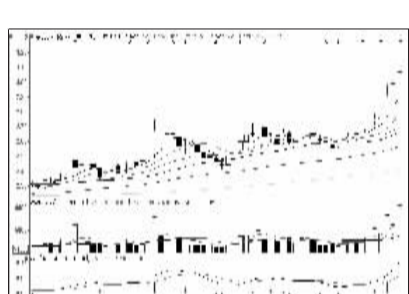
中国银行 (601988): 有回调压力, 持股观望



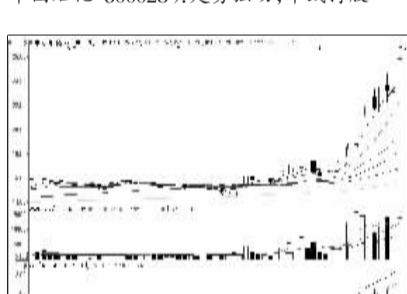
格力电器 (000651): 短线承压, 中线持有



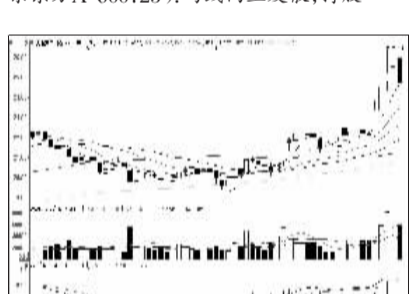
中国石化 (600028): 走势强劲, 中线持股



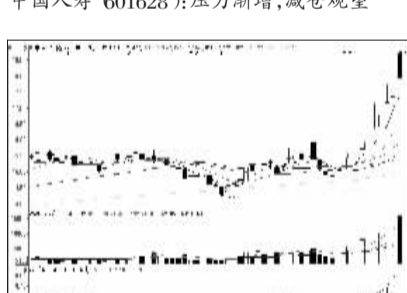
京东方A (000725): 均线向上发散, 持股



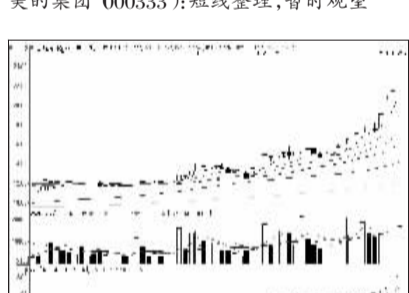
中国人寿 (601628): 压力渐增, 减仓观望



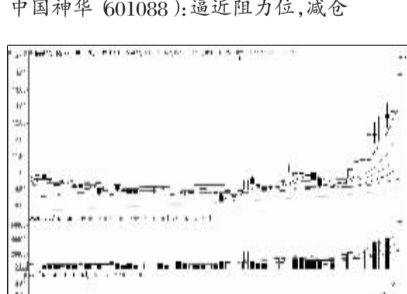
美的集团 (000333): 短线整理, 暂时观望



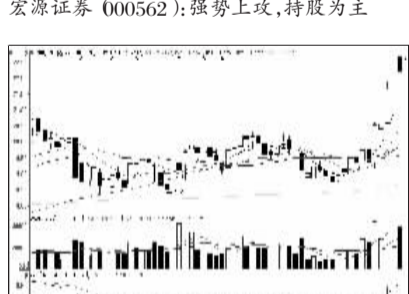
中国神华 (601088): 逼近阻力位, 减仓



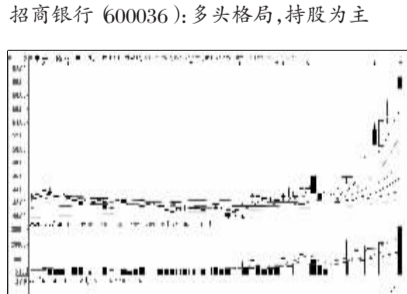
宏源证券 (000562): 强势上攻, 持股为主



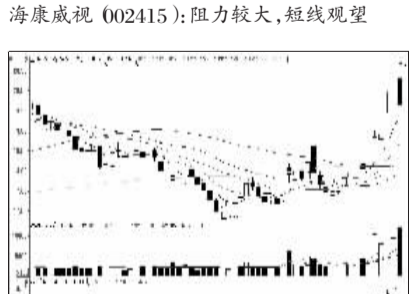
招商银行 (600036): 多头格局, 持股为主



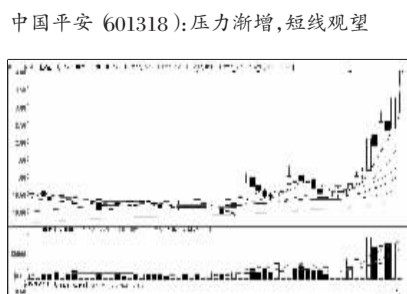
海康威视 (002415): 阻力较大, 短线观望



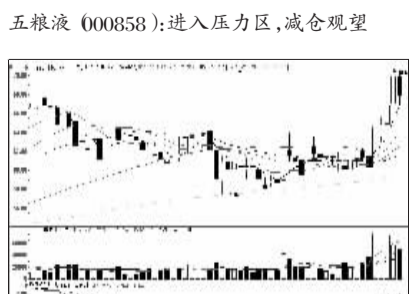
中国平安 (601318): 压力渐增, 短线观望



五粮液 (000858): 进入压力区, 减仓观望



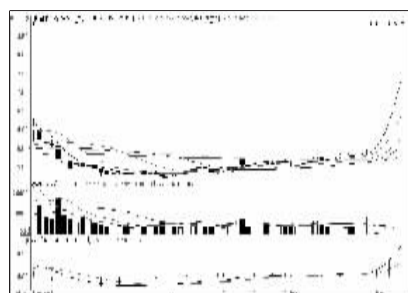
兴业银行 (601166): 多头格局, 中线持股



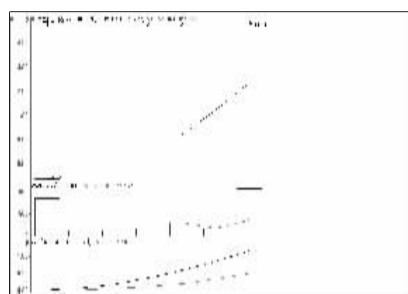
洋河股份 (002304): 上升形态, 持股

周涨跌幅前10

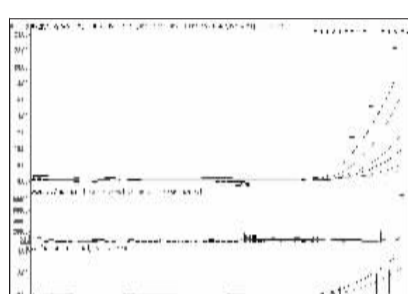
涨幅前10



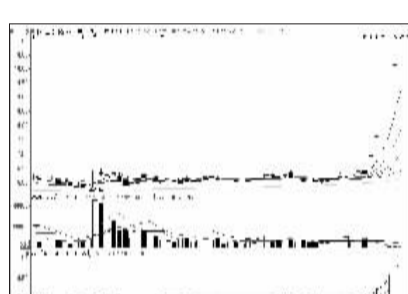
四川金顶 (600678): 一字涨停, 持股



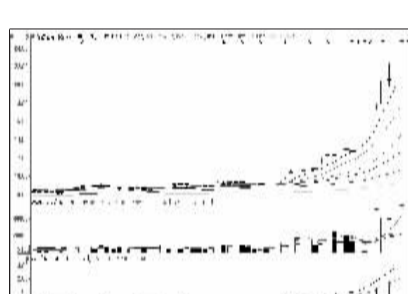
福达股份 (603166): 新股一字板, 持股



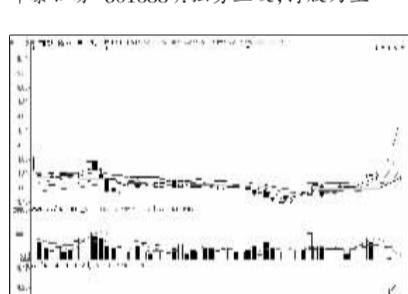
中纺投资 (600061): 放出天量, 落袋为安



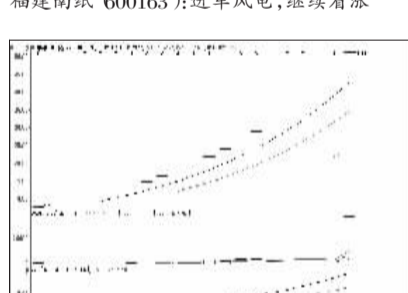
四川圣达 (000835): 走势强劲, 继续看涨



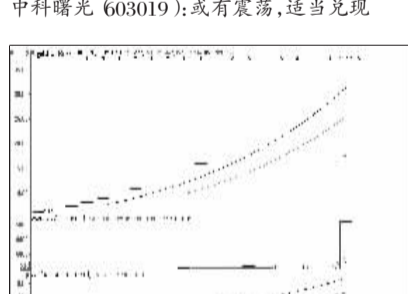
华泰证券 (601688): 强势上攻, 持股为主



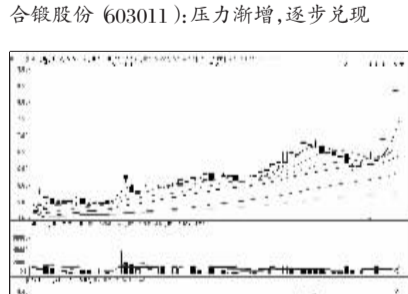
福建南纸 (600163): 进军风电, 继续看涨



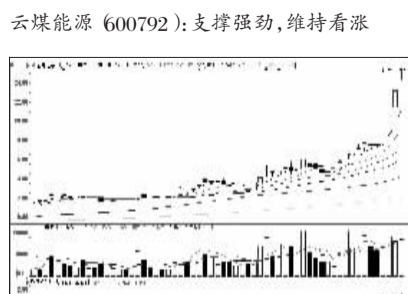
中科曙光 (603019): 或有震荡, 适当兑现



合锻股份 (603011): 压力渐增, 逐步兑现

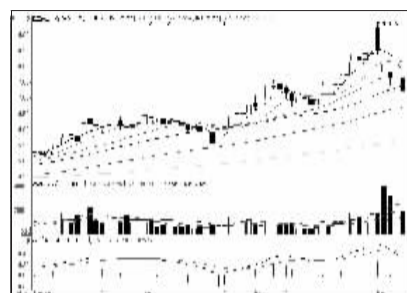


云煤能源 (600792): 支撑强劲, 维持看涨

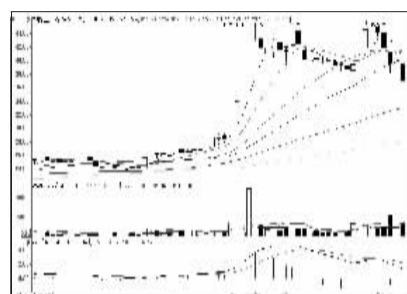


宏源证券 (000562): 强势上攻, 持股为主

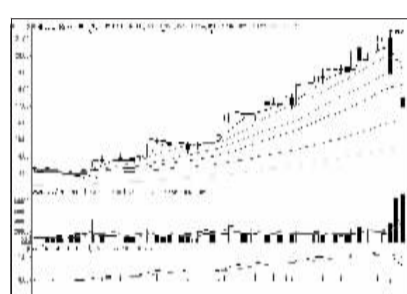
跌幅前10



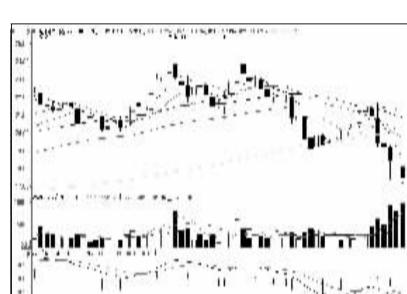
恒立实业 (000622): 仍需震荡, 短线离场



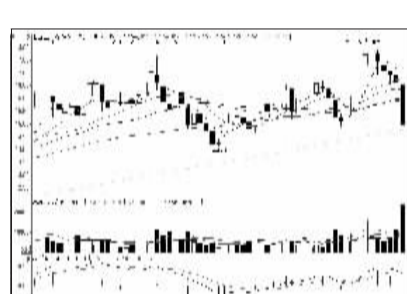
西藏药业 (600211): 缩量下跌, 或有反弹



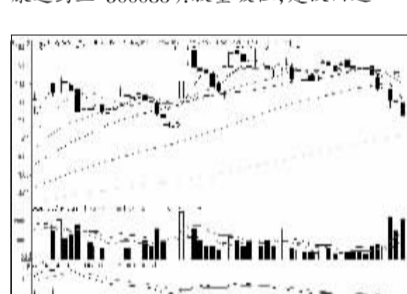
通化东宝 (600867): 放量下挫, 出局为主



当升科技 (600073): 形态破坏, 回避



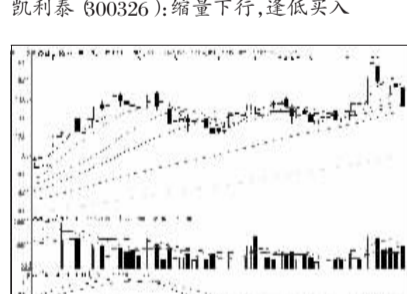
康芝药业 (600086): 放量破位, 建议回避



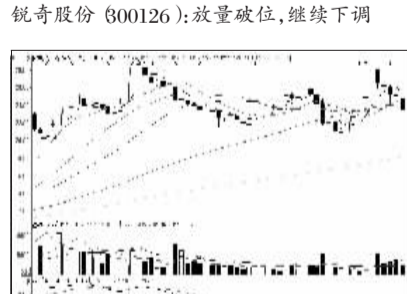
东方能源 (000958): 压力释放, 短线企稳



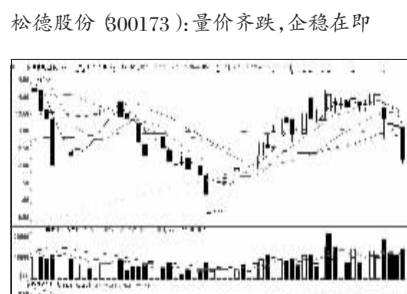
凯利泰 (600326): 缩量下行, 逢低买入



锐奇股份 (600126): 放量破位, 继续下调



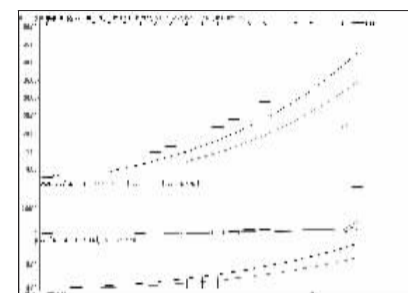
松德股份 (600173): 量价齐跌, 企稳在即



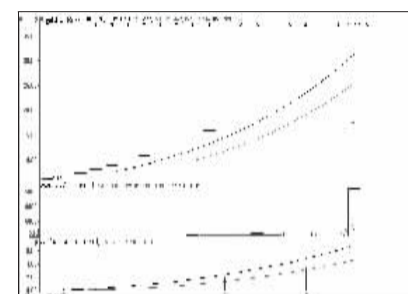
鸿利光电 (600219): 单日长阴, 短线观察

连续涨跌前10

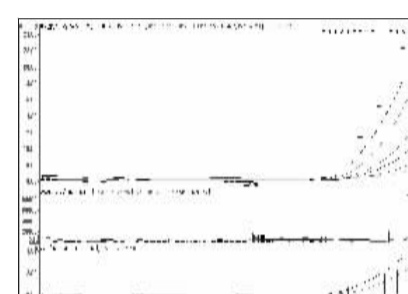
连涨前10



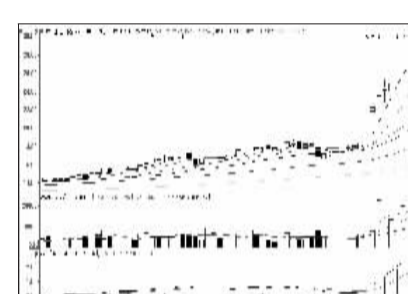
中科曙光 (603019): 或有震荡, 适当兑现



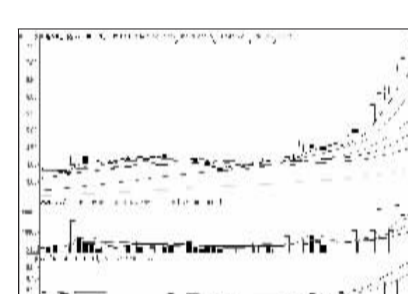
合锻股份 (603011): 压力渐增, 逐步兑现



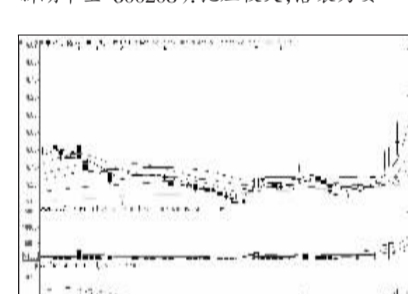
中纺投资 (600061): 放出天量, 落袋为安



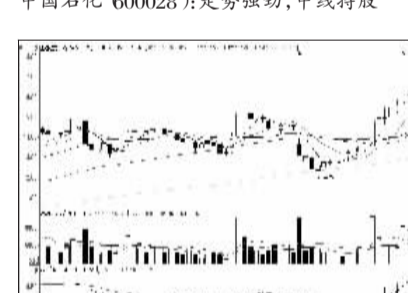
辉丰股份 (002496): 起买严重, 注意风险



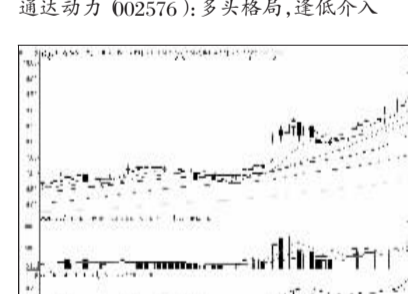
新湖中宝 (600208): 抛压较大, 落袋为安



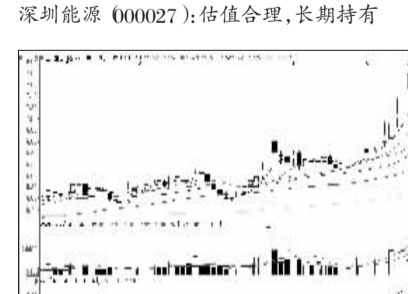
中国石化 (600028): 走势强劲, 中线持股



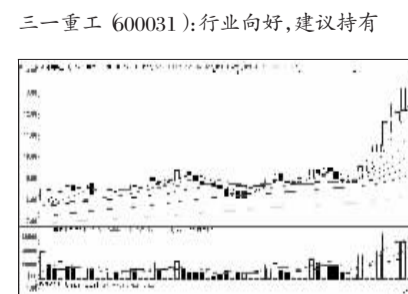
通达动力 (002576): 多头格局, 逢低介入



深圳能源 (000027): 估值合理, 长期持有

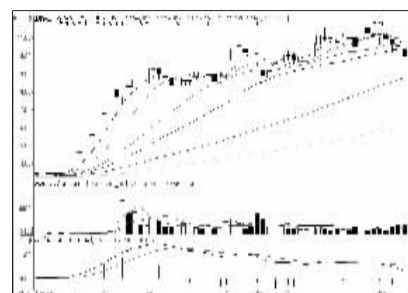


三一重工 (600031): 行业向好, 建议持有

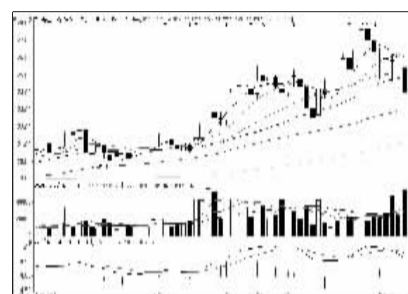


兖州煤业 (600188): 均线向上发散, 加仓

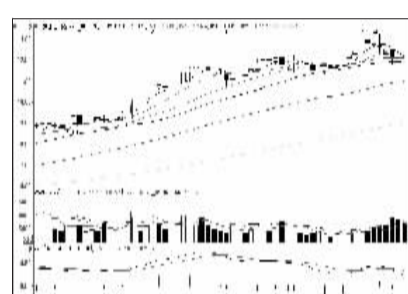
连跌前10



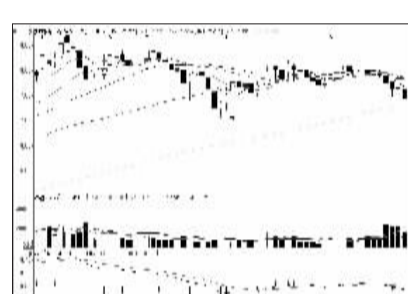
江泉实业 (600212): 盈利堪忧, 继续观察



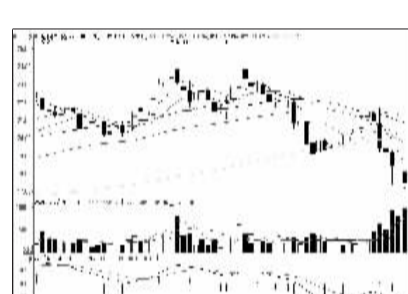
南方泵业 (600145): 短线调整, 逢低吸入



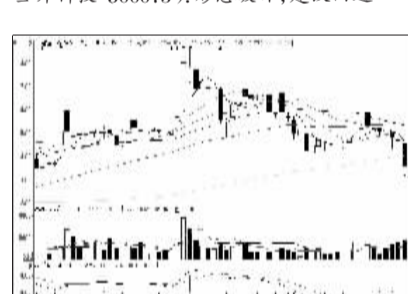
北玻股份 (002613): 盘中破位, 继续调整



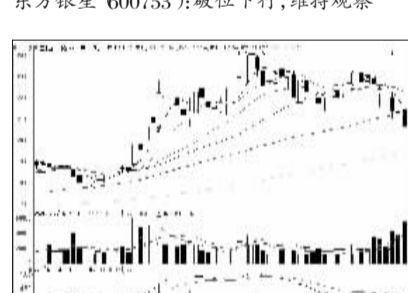
秦岭水泥 (600217): 估值堪忧, 建议回避



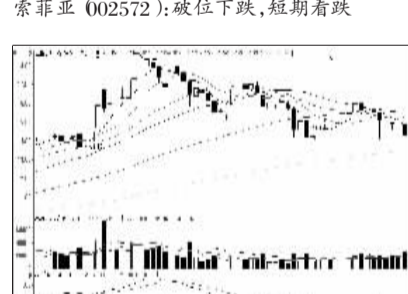
当升科技 (600073): 形态破坏, 建议回避



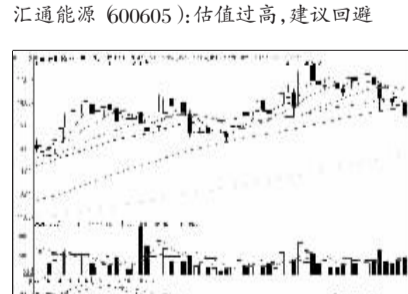
东方银星 (600753): 破位下行, 维持观察



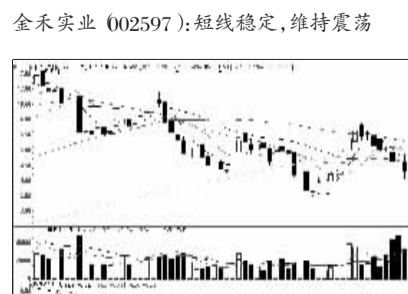
索菲亚 (002572): 破位下跌, 短期看跌



汇通能源 (600605): 估值过高, 建议回避



金禾实业 (002597): 短线稳定, 维持震荡



和顺电气 (600141): 缩量下跌, 企稳有望