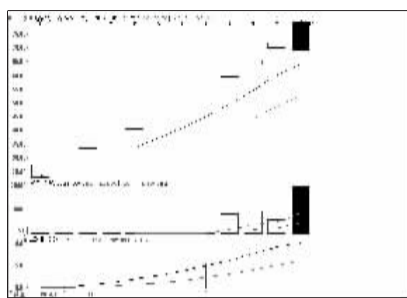


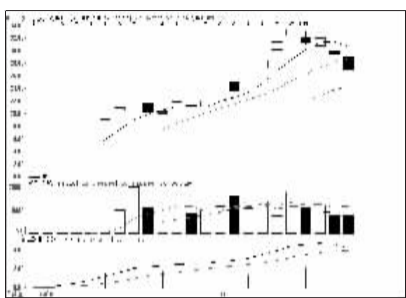
股东人数增减前10

股东人数减少前10



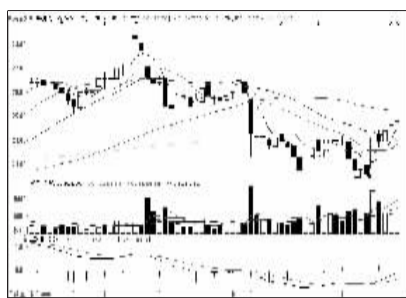
地尔汉宇 (800403): 打开涨停, 止盈为主

股东人数增加前10



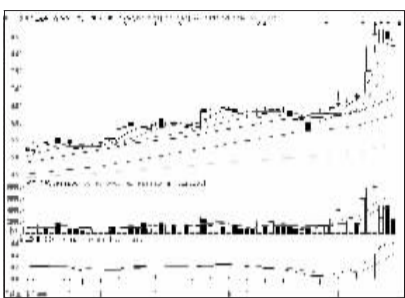
东方电缆 (603606): 调整后仍将上行

资金流入金额前10



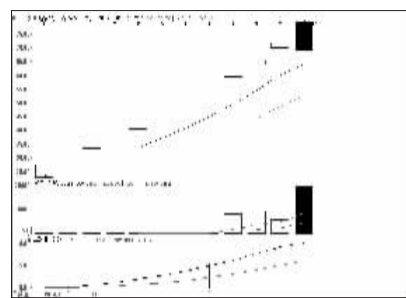
伊利股份 (600887): 上涨态势良好, 跟进

资金流出金额前10



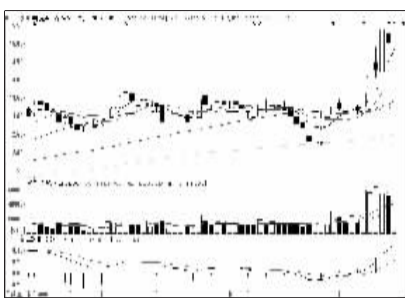
兴业证券 (601377): 均线反压, 落袋为安

成交突增前10

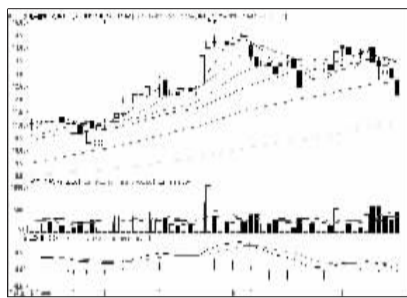


地尔汉宇 (800403): 打开涨停, 止盈为主

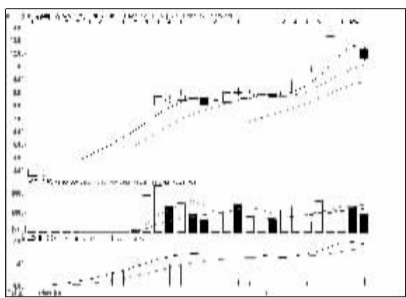
成交金额前8



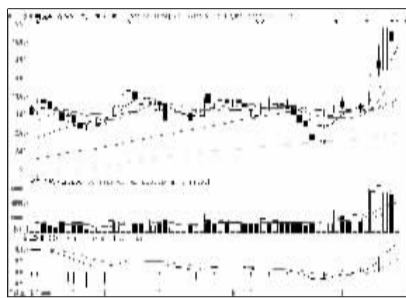
中信证券 (600030): 强势格局, 看高一线



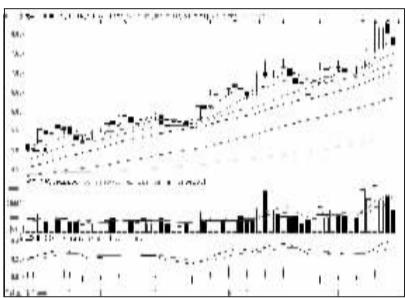
潍柴重机 (000880): 弱势特征明显, 出局



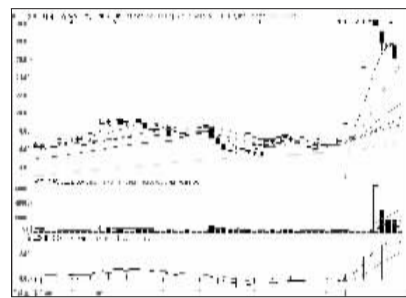
节能风电 (601016): 快速调整, 静观其变



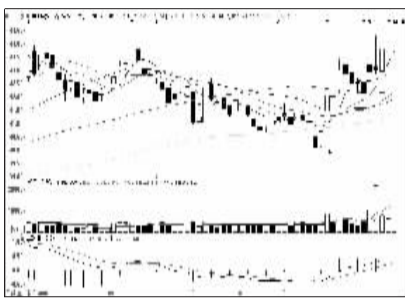
中信证券 (600030): 强势格局, 看高一线



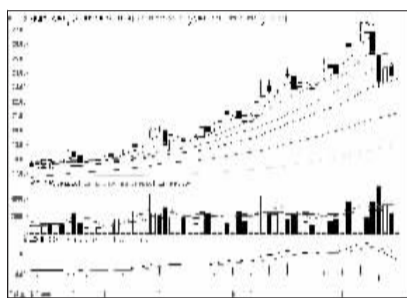
太平洋 (601099): 短线震荡, 持股观望



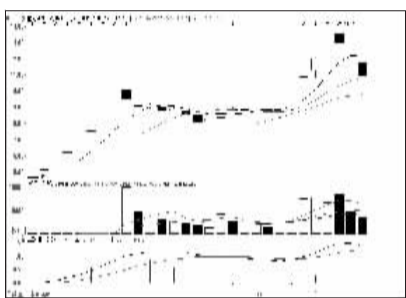
广船国际 (600685): 强势震荡, 逢低吸纳



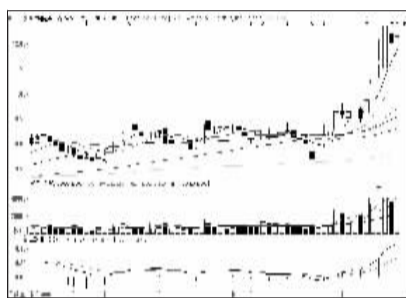
中国平安 (601318): 量能萎缩, 或有震荡



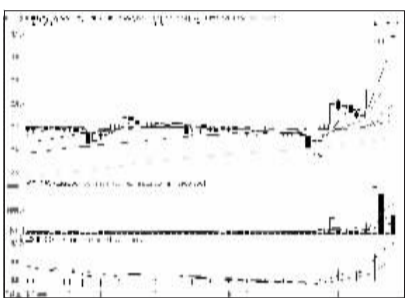
长青集团 (002616): 短线看跌, 离场为宜



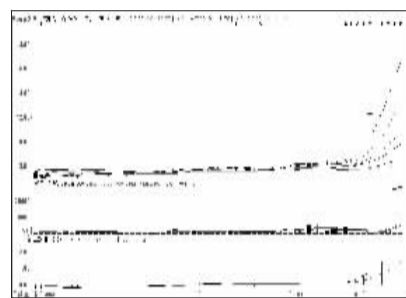
重庆燃气 (600917): 仍有向上空间



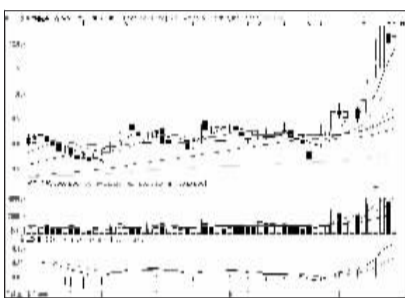
海通证券 (600837): 继续看好, 回调介入



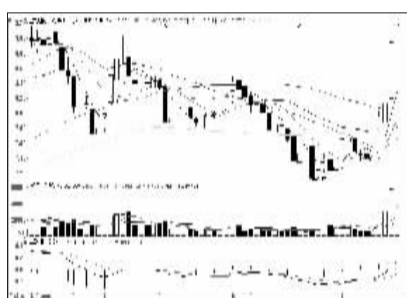
中国银行 (601988): 强势格局, 暂且持有



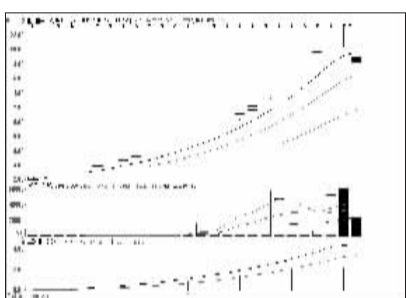
常发股份 (002413): 连续涨停, 暂且持有



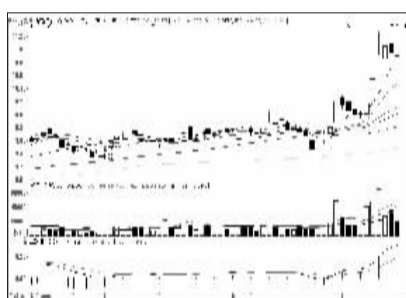
海通证券 (600837): 继续看好, 回调介入



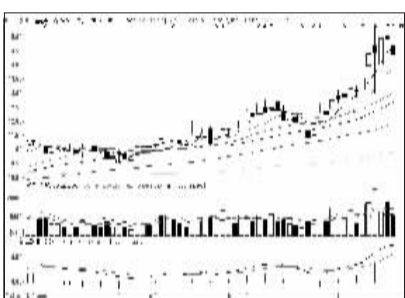
宝硕股份 (600155): 短线冲高, 或有震荡



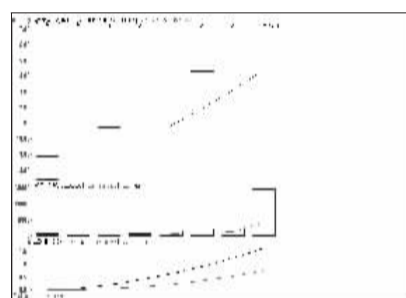
兰石重装 (603169): 冲高回落, 暂且观望



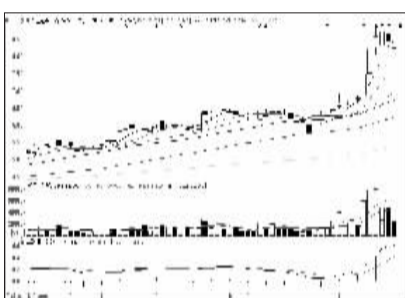
浦发银行 (600000): 震荡整固, 继续持有



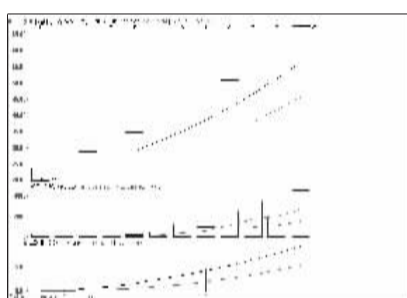
国金证券 (600109): 温和上扬, 继续持有



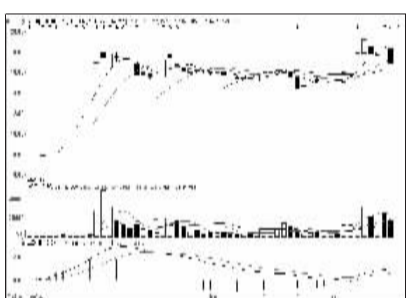
陕西黑猫 (601015): 显著放量, 谨防有变



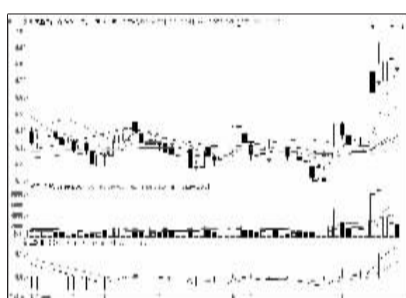
兴业证券 (601377): 均线反压, 落袋为安



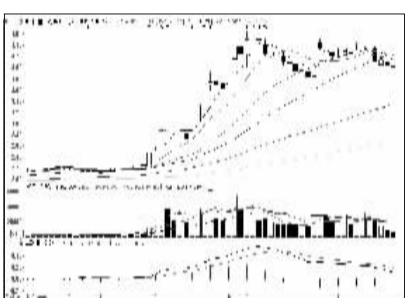
科隆精化 (800405): 涨幅可观, 逐步止盈



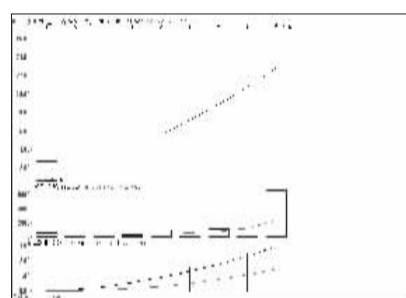
长白山 (603099): 上涨回调, 近期低吸



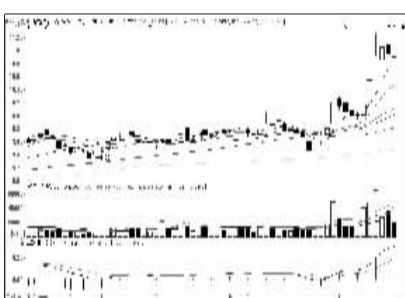
民生银行 (600016): 转向震荡, 观望为宜



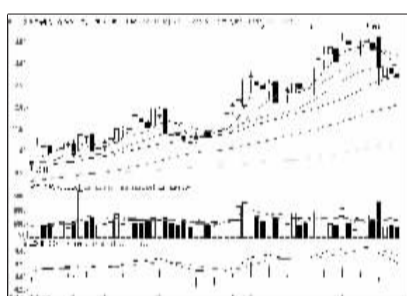
中国一重 (601106): 趋势走弱, 近期看淡



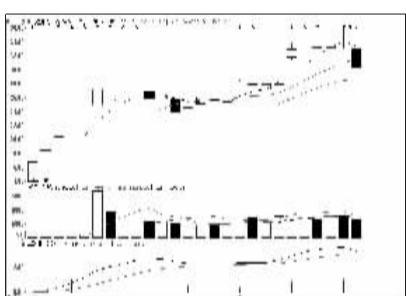
海洋王 (002724): 量能放大, 分歧加剧



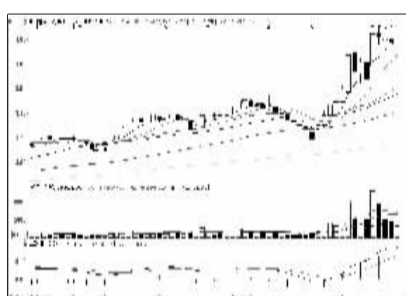
浦发银行 (600000): 震荡整固, 继续持有



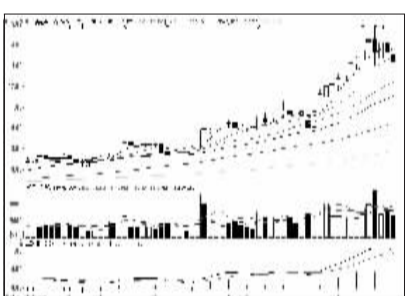
华帝股份 (002035): 短线走弱, 离场为主



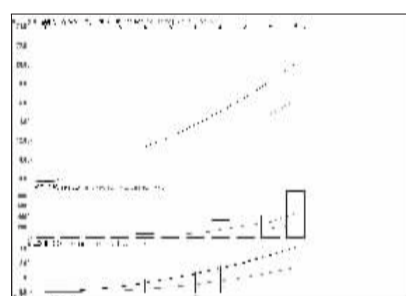
万盛股份 (603010): 下行空间不大, 低吸



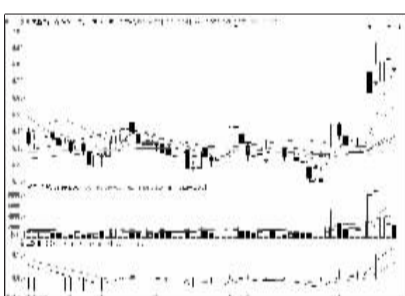
中国建筑 (601668): 上涨趋势, 逢低进场



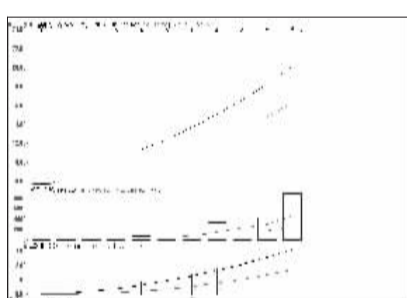
东吴证券 (601555): 回调换手, 暂且持有



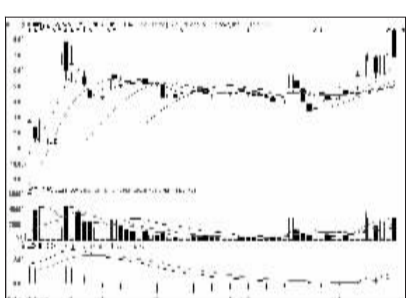
石英股份 (603688): 涨幅可观, 逐步止盈



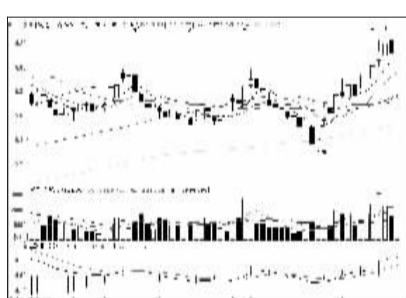
民生银行 (600016): 转向震荡, 观望为宜



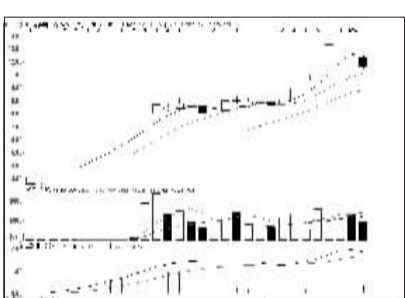
石英股份 (603688): 涨幅可观, 逐步止盈



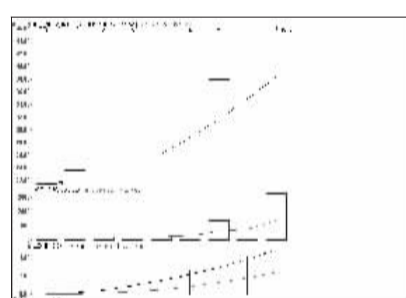
中材节能 (603126): 下行空间不大, 吸纳



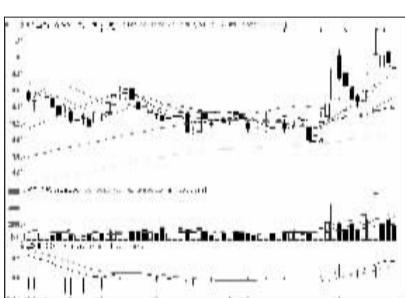
保利地产 (600048): 逼近前高, 压力渐增



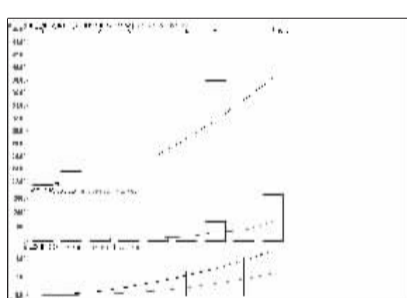
节能风电 (601016): 快速调整, 静观其变



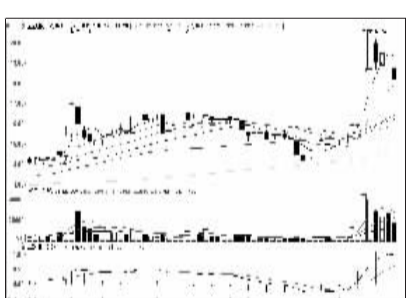
中电电机 (603988): 成交放量, 分歧加剧



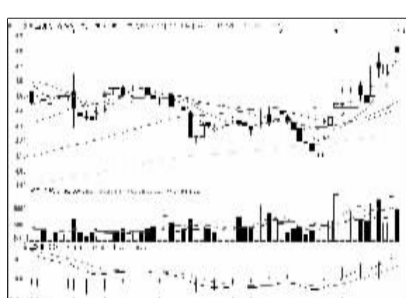
兴业银行 (601166): 止升回落, 近期高抛



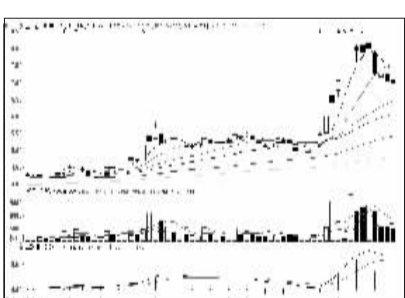
中电电机 (603988): 成交放量, 分歧加剧



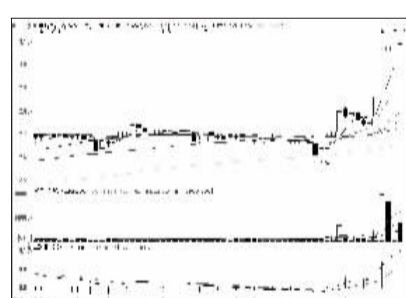
应流股份 (603308): 回调幅度不大



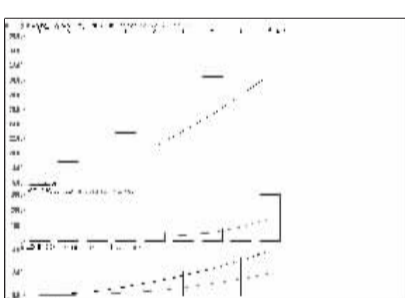
宝钢股份 (600019): 震荡上行, 继续持有



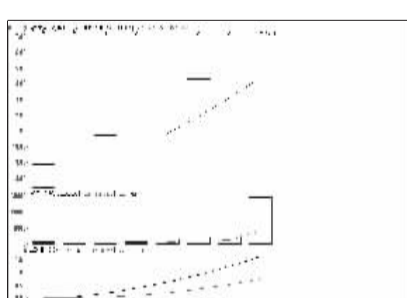
连云港 (601008): 连续回调, 观望为主



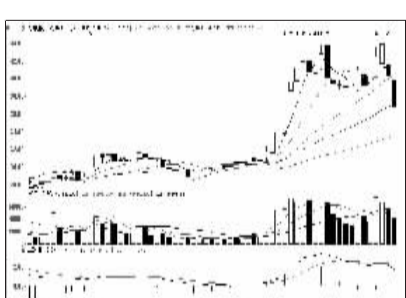
中国银行 (601988): 强势格局, 暂且持有



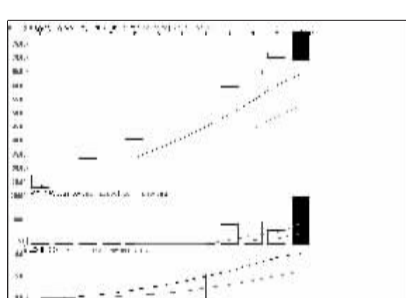
中国建筑 (601668): 上涨趋势, 逢低进场



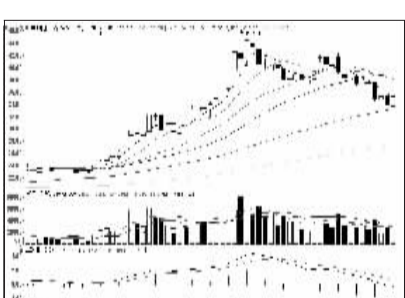
陕西黑猫 (601015): 显著放量, 谨防有变



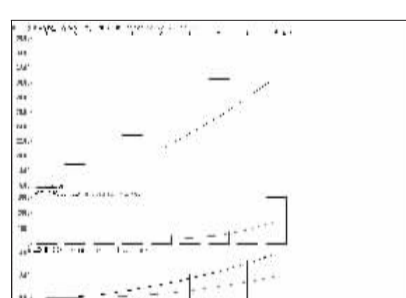
联明股份 (603006): 仍有向上空间



地尔汉宇 (800403): 打开涨停, 止盈为主



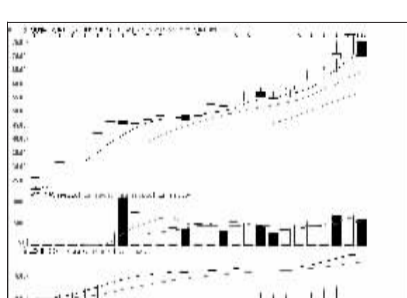
中国船舶 (600150): 有望反弹, 低吸为主



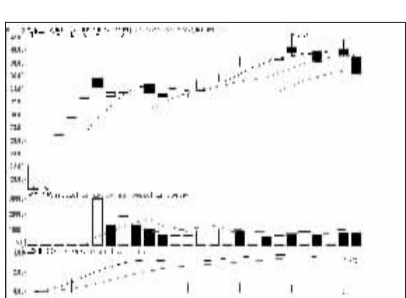
萃华珠宝 (002731): 浮盈可观, 适当兑现



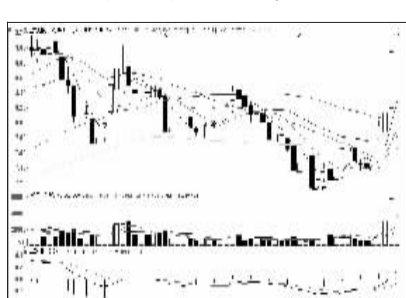
科隆精化 (800405): 涨幅可观, 逐步止盈



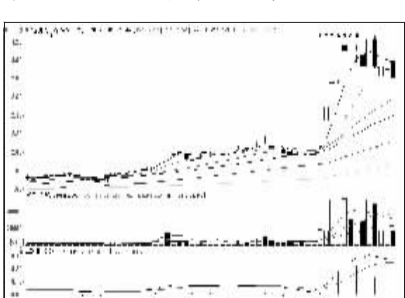
飞凯材料 (800398): 上涨回调, 逢低吸纳



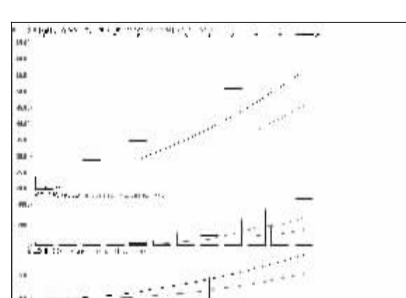
九洲药业 (603456): 回调幅度不大, 吸纳



宝硕股份 (600155): 短线冲高, 或有震荡



马钢股份 (600808): 量能萎缩, 出货为主



科隆精化 (800405): 涨幅可观, 逐步止盈



看股票 买彩票 全搞定 大智慧手机版 d.wapgw.cn