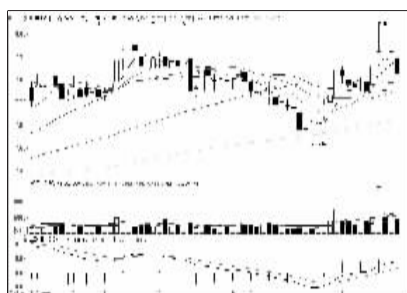
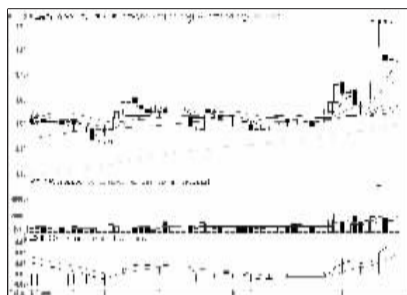


沪深10大权重股

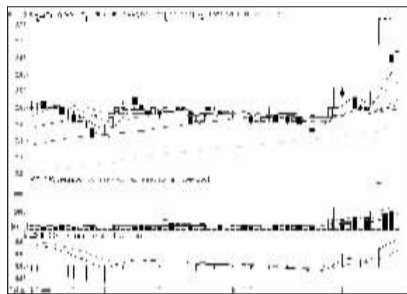
沪市10大权重



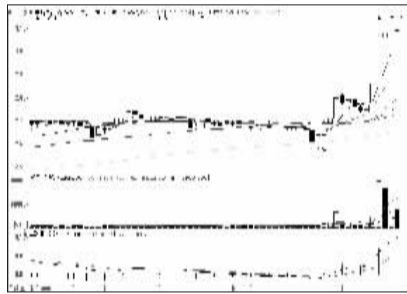
中国石油 (601857): 震荡整固, 持股观望



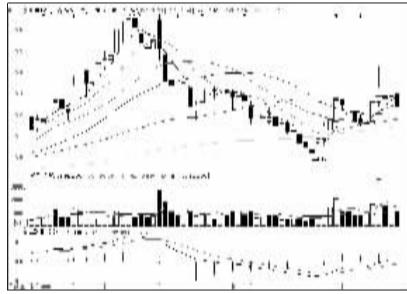
工商银行 (601398): 多头行情可望维持



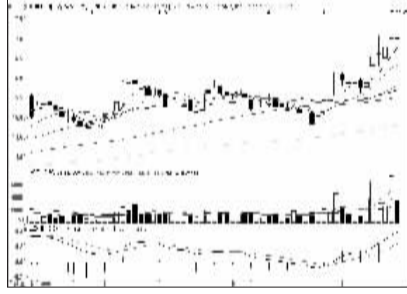
农业银行 (601288): 中期有走好迹象



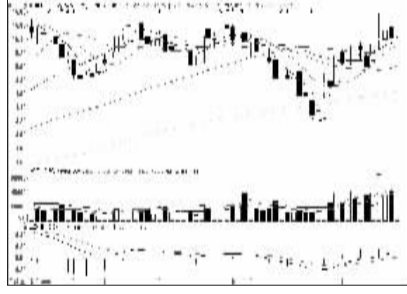
中国银行 (601988): 强势格局, 暂且持有



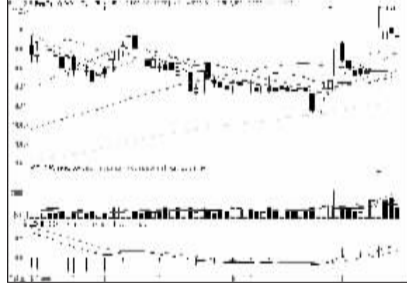
中国石化 (600028): 震荡格局, 观望为宜



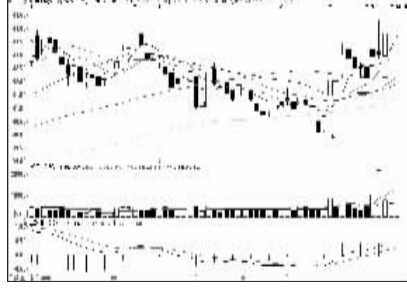
中国人寿 (601628): 买气不济, 出货为宜



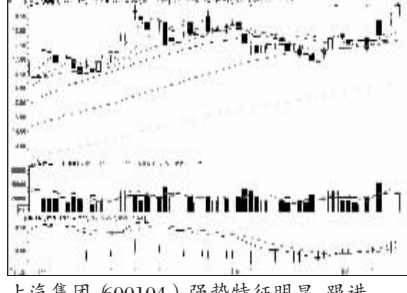
中国神华 (601088): 多头进场, 近期加仓



招商银行 (600036): 上攻能量不足, 高抛

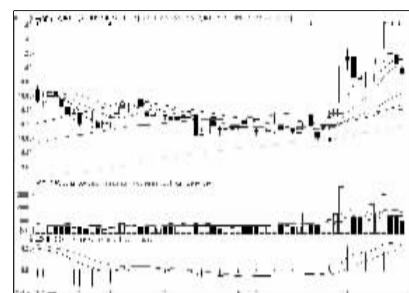


中国平安 (601318): 量能萎缩, 或有震荡

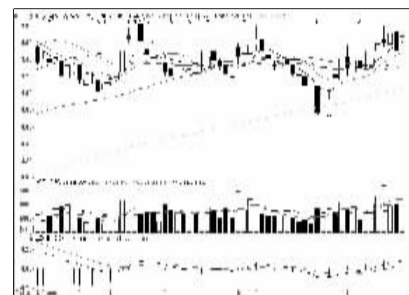


上汽集团 (600104): 强势特征明显, 跟进

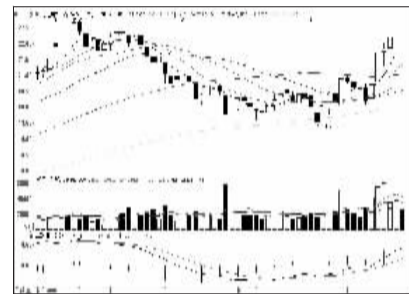
深市10大权重



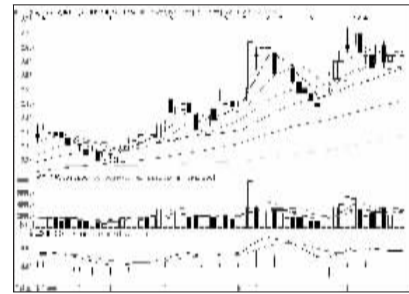
平安银行 (000001): 震荡回调, 谨慎为宜



万科A (000002): 多头市道, 近期跟入



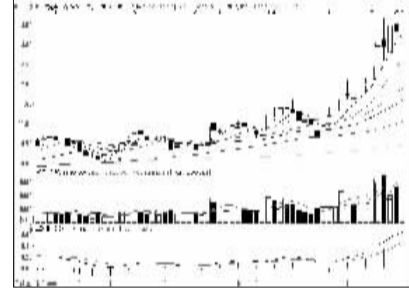
美的集团 (000333): 量能萎缩, 或有震荡



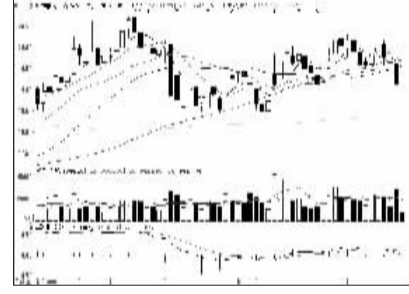
京东方A (000725): 多头进场, 近期介入



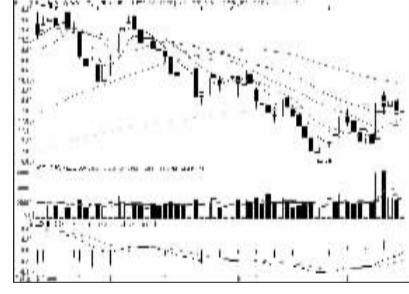
格力电器 (000651): 上行可能性较大



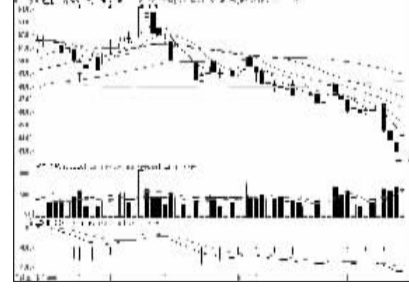
广发证券 (000776): 继续看好, 回调介入



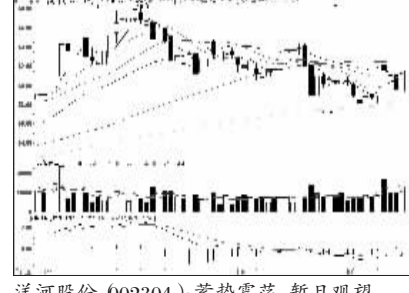
海康威视 (002415): 弱势格局, 注意止损



五粮液 (000858): 向上挑战半年线



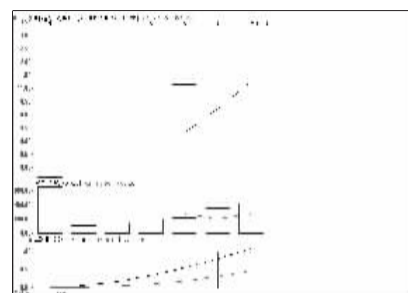
比亚迪 (002594): 弱势格局, 注意止损



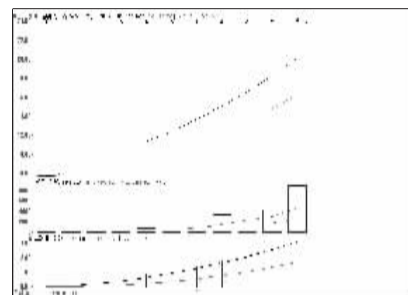
洋河股份 (002304): 蓄势震荡, 暂且观望

周涨跌幅前10

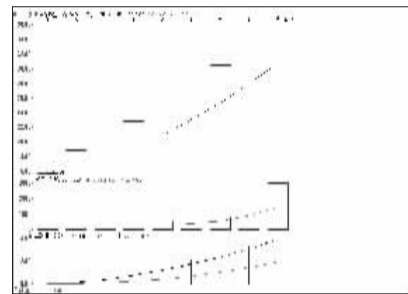
涨幅前10



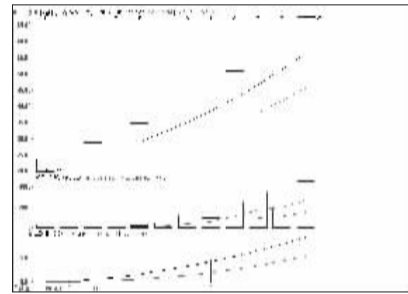
中科曙光 (603019): 新股, 连续涨停



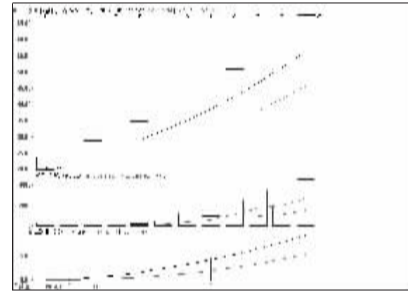
石英股份 (603688): 涨幅可观, 逐步止盈



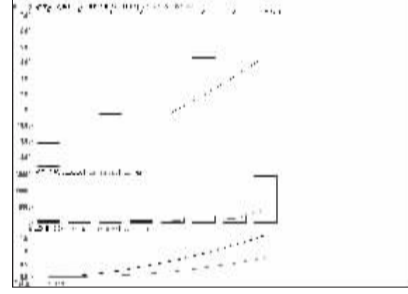
萃华珠宝 (002731): 浮盈可观, 适当兑现



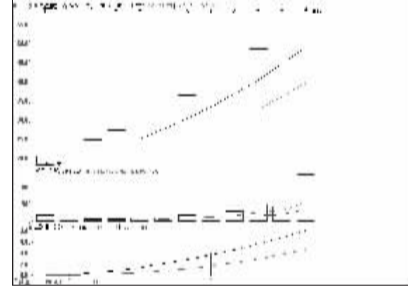
中电电机 (603988): 成交量, 分歧加剧



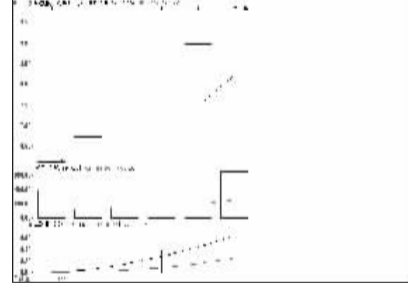
科隆精化 (800405): 涨幅可观, 逐步止盈



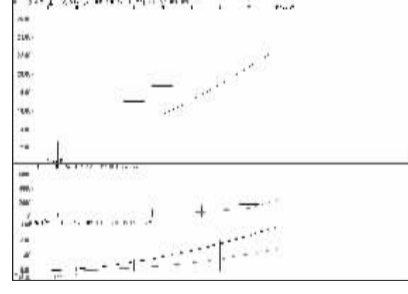
陕西黑猫 (601015): 显著放量, 谨防有变



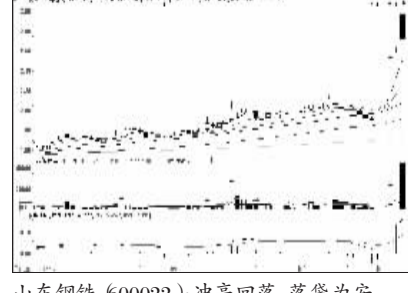
九强生物 (800406): 新股, 连续涨停



合锻股份 (603011): 新股, 连续涨停

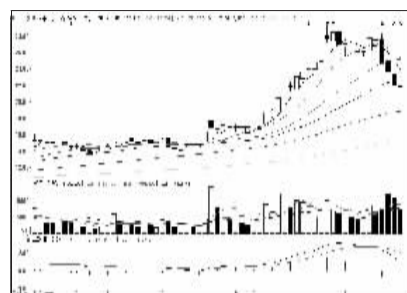


海洋王 (002724): 成交量, 分歧加剧

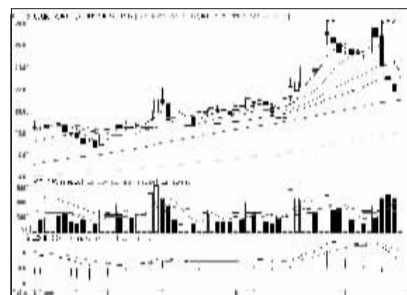


山东钢铁 (600022): 冲高回落, 落袋为安

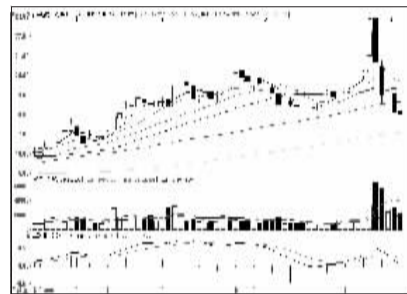
跌幅前10



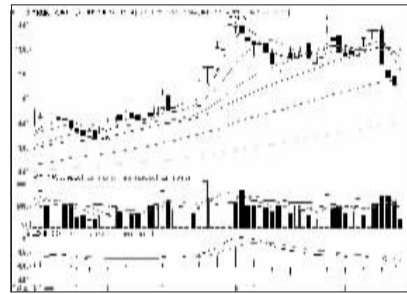
长春一东 (600148): 回调充分, 或将企稳



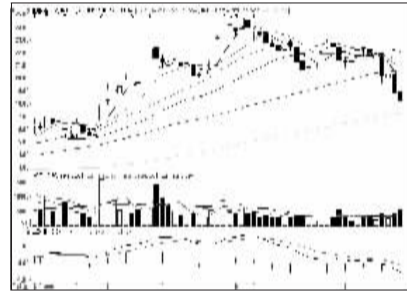
北方股份 (600262): 均线支持, 有望企稳



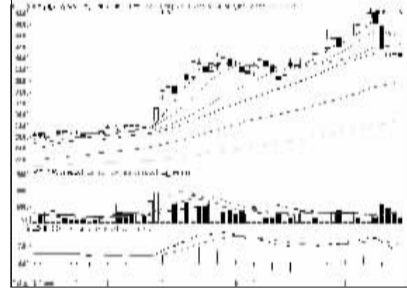
新莱应材 (600260): 仍将走弱, 出局为主



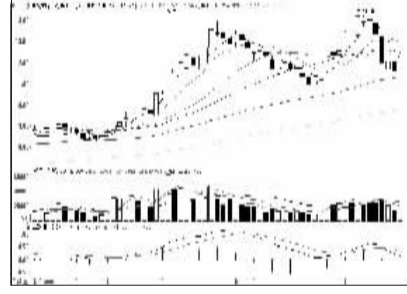
西仪股份 (002265): 下跌格局, 出局为主



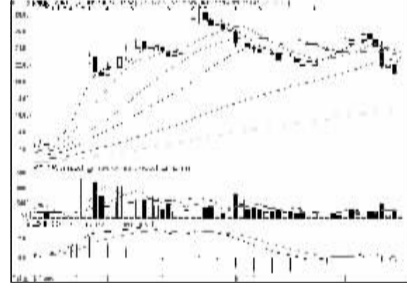
捷顺科技 (002609): 短线超跌, 反弹出局



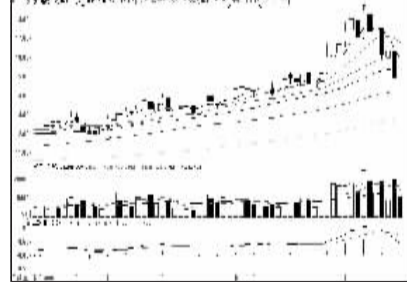
华东电脑 (600850): 有下行压力, 逢高离场



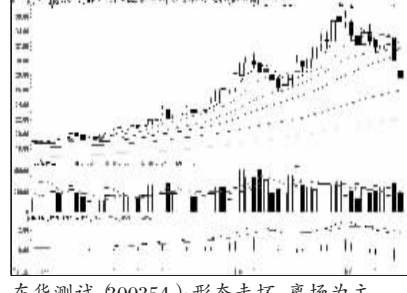
中航黑豹 (600760): 空头占据主动, 离场



松德股份 (600173): 弱势格局, 离场为主



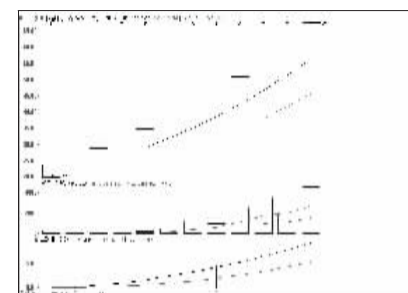
博云新材 (002297): 回调充分, 或将企稳



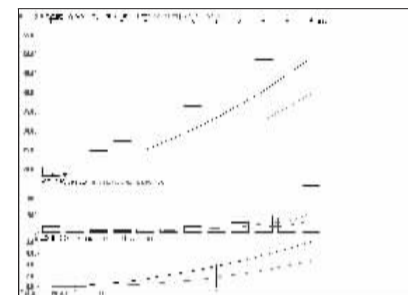
东华测试 (600354): 形态走坏, 离场为主

连续涨跌前10

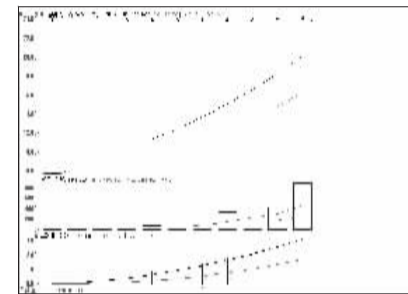
连涨前10



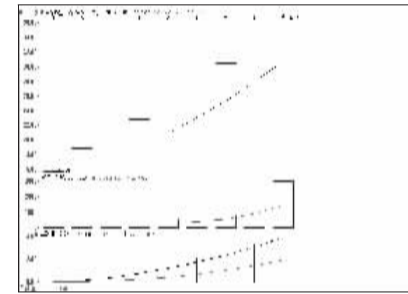
科隆精化 (800405): 涨幅可观, 逐步止盈



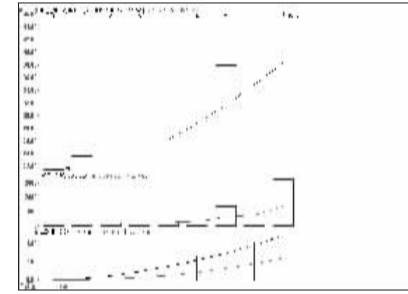
九强生物 (800406): 新股, 连续涨停



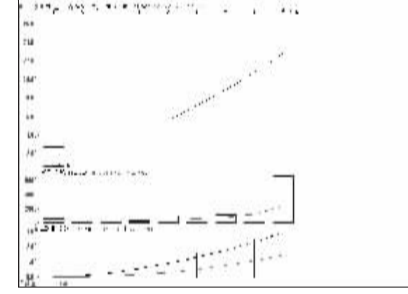
石英股份 (603688): 涨幅可观, 逐步止盈



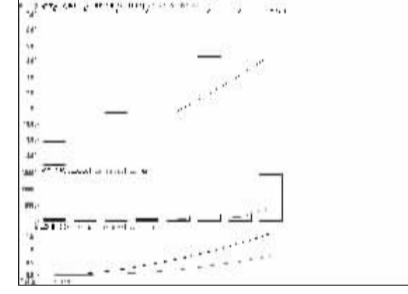
萃华珠宝 (002731): 浮盈可观, 适当兑现



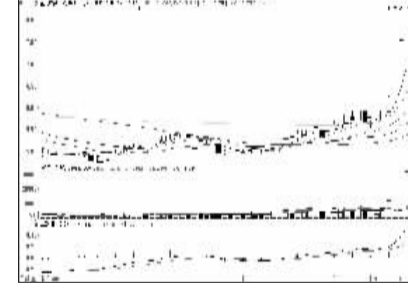
中电电机 (603988): 成交量, 分歧加剧



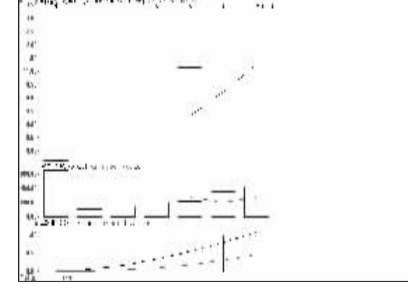
海洋王 (002724): 成交量, 分歧加剧



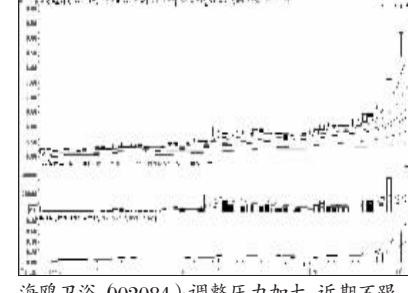
陕西黑猫 (601015): 显著放量, 谨防有变



星美联合 (000892): 高位放量, 不追涨

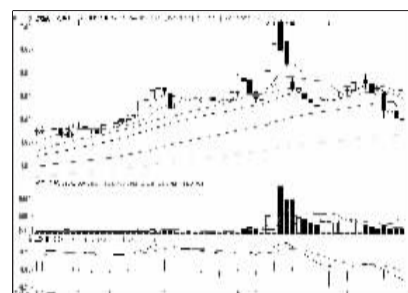


中科曙光 (603019): 新股, 连续涨停

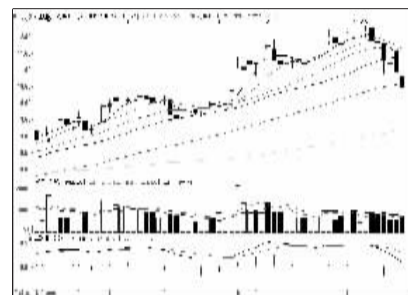


海鸥卫浴 (002084): 调整压力加大, 近期不跟

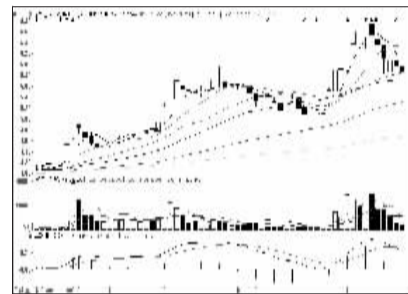
连跌前10



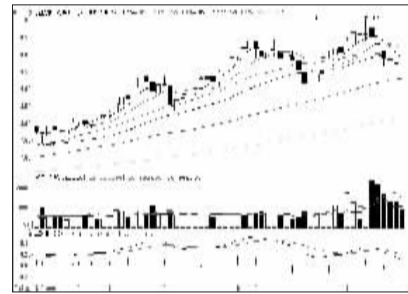
欣龙控股 (000955): 弱势格局, 出局为宜



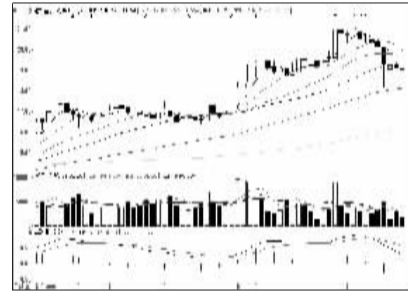
乐通股份 (002319): 跌势较急, 离场为主



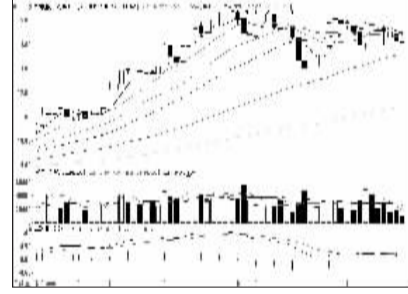
深南电A (000037): 上攻能量不足, 出货



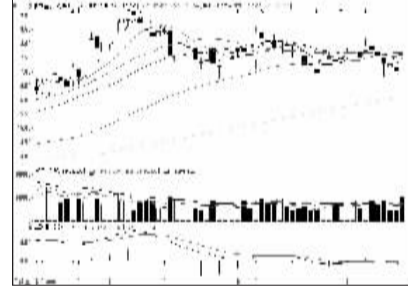
方圆支承 (002147): 仍应看淡, 离场为妙



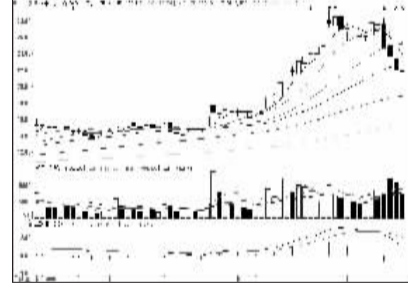
达华智能 (002512): 走势较弱, 离场观望



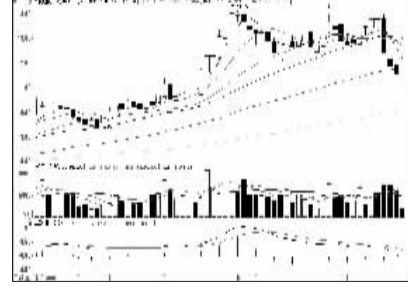
海德股份 (000567): 弱势明显, 建议止损



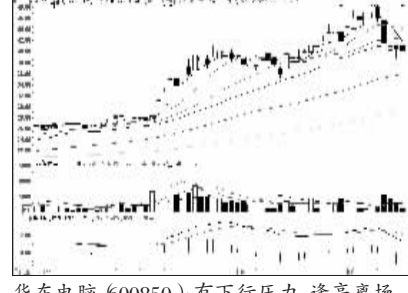
赛为智能 (600044): 弱势格局, 换股操作



长春一东 (600148): 回调充分, 或将企稳



西仪股份 (002265): 下跌格局, 出局为主



华东电脑 (600850): 有下行压力, 逢高离场