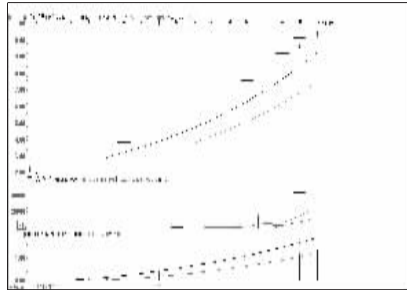


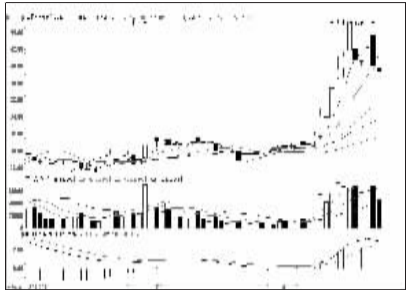
股东人数增减前10

股东人数减少前10



兰石重装 (603169): 风险加剧, 兑现盈利

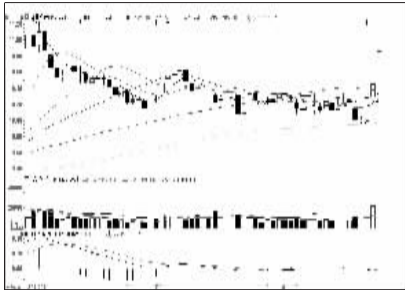
股东人数增加前10



联明股份 (603006): 短线止升回落, 不跟

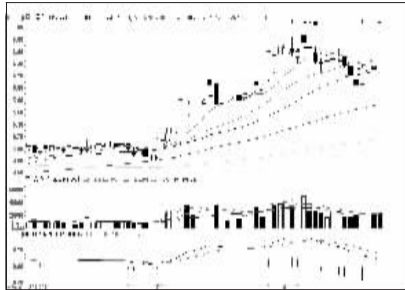
一周资金流入流出金额前10

资金流入金额前10



兴业银行 (601166): 谨防回调, 中线看多

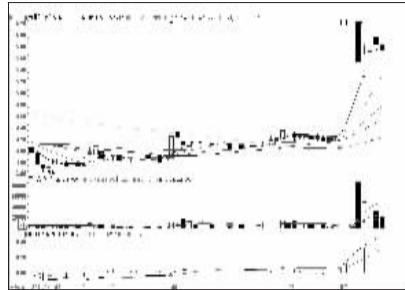
资金流出金额前10



中国重工 (601989): 仍有下调压力, 离场

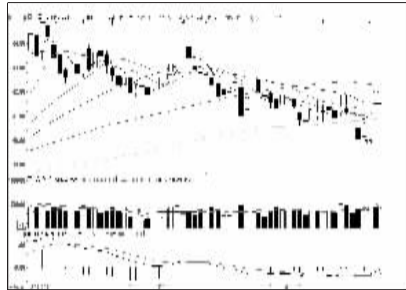
周成交金额

成交突增前10

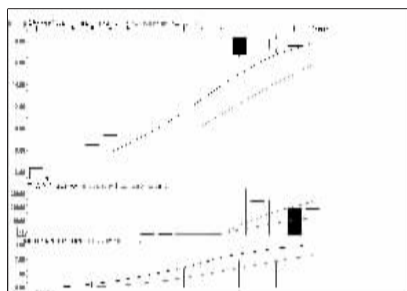


武昌鱼 (600275): 买气不济, 出货为主

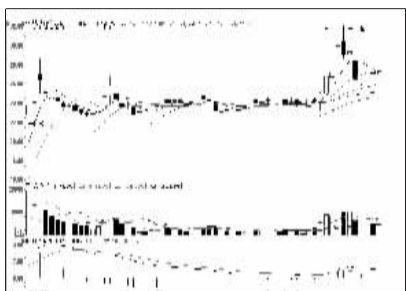
成交金额前8



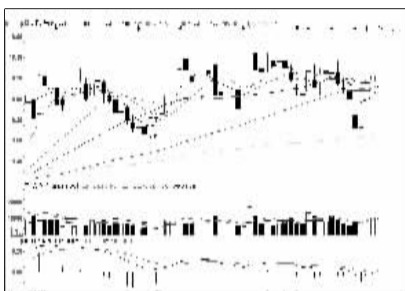
中国平安 (601318): 形态需要巩固, 持有



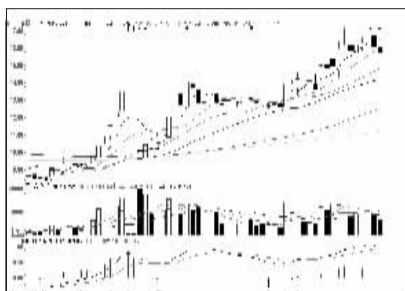
宝色股份 (800402): 重启升势, 暂时不跟



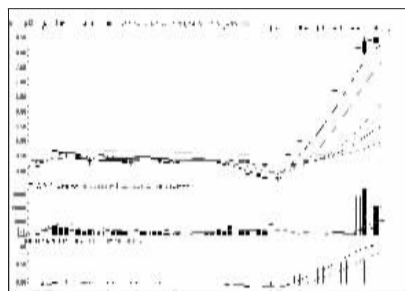
北特科技 (603009): 整理形态, 建议观望



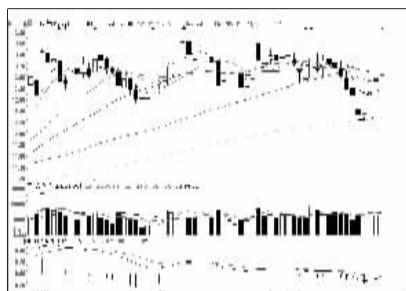
海通证券 (600837): 连续上攻多日, 观望



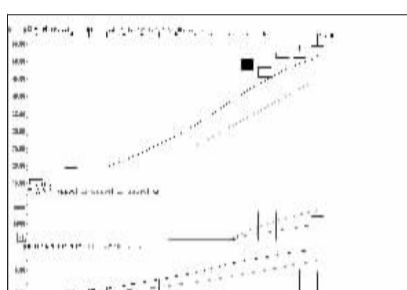
中体产业 (600158): 上行有阻力, 出货为主



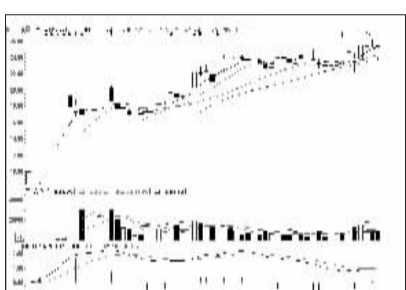
*ST新材 (600299): 控制仓位, 兑现浮盈



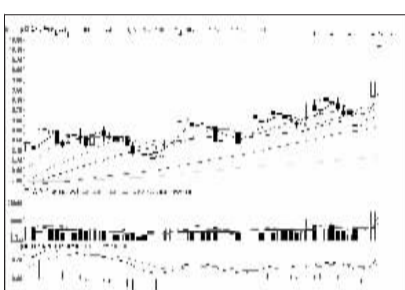
中信证券 (600030): 反弹难改下行趋势



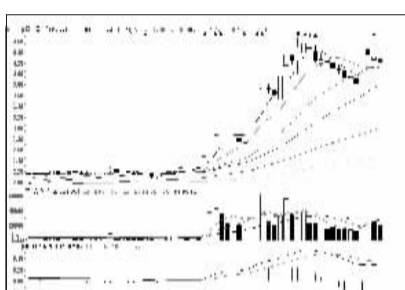
京天利 (800399): 冲高回落, 谨防调整



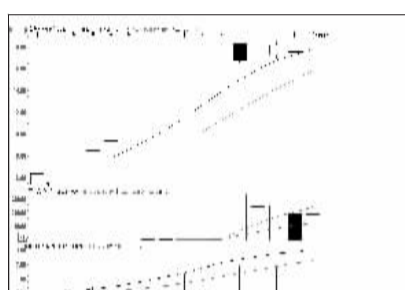
康尼机电 (603111): 可能继续回调, 高抛



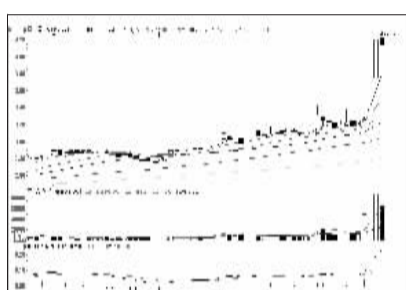
华泰证券 (601688): 有回调压力, 不追



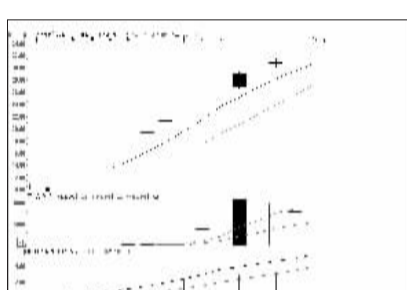
中国一重 (601106): 买气减弱, 近期高抛



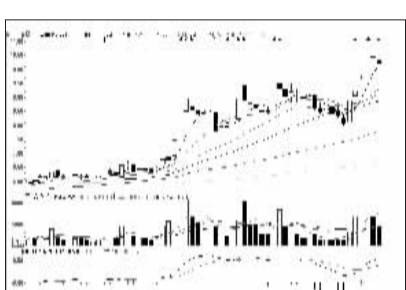
宝色股份 (800402): 重启升势, 暂时不跟



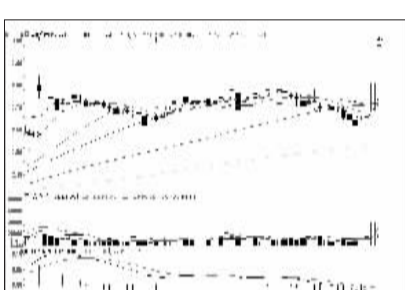
中国中铁 (601390): 主力退却, 建议出货



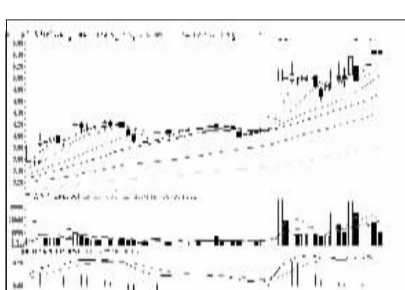
劲拓股份 (800400): 博弈风险高, 观望



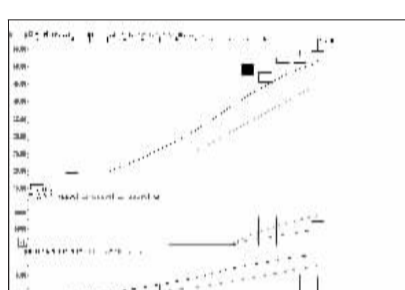
天津海运 (600751): 冲高回落, 落袋为安



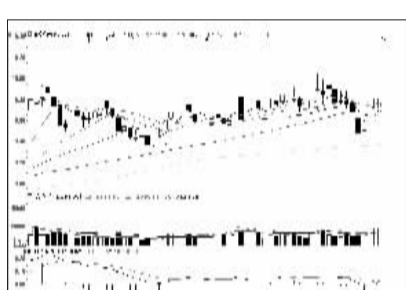
光大银行 (601818): 有回调压力, 谨慎



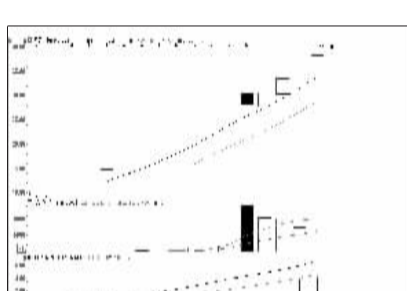
方正科技 (600601): 买气有所减弱, 高抛



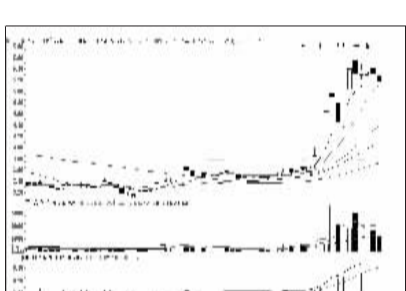
京天利 (800399): 冲高回落, 谨防调整



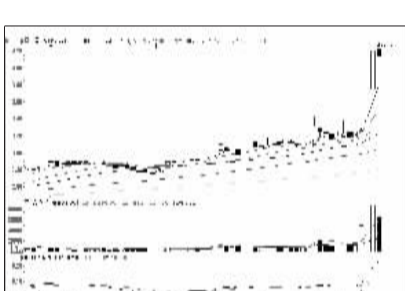
浦发银行 (600000): 有回调压力, 近期不跟



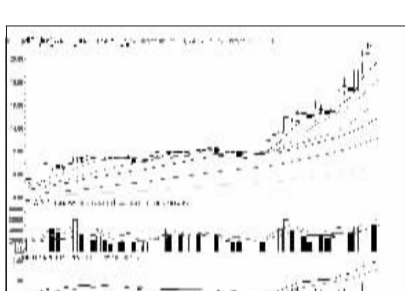
花园生物 (800401): 风险加剧, 适当减仓



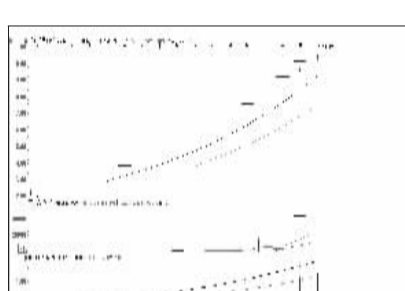
嘉麟杰 (002486): 短线止升回落, 不跟



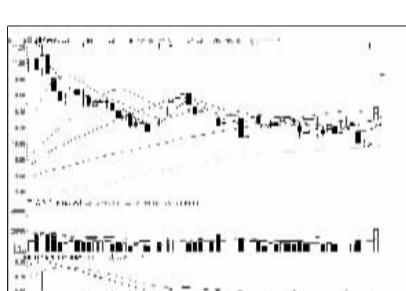
中国中铁 (601390): 主力退却, 建议出货



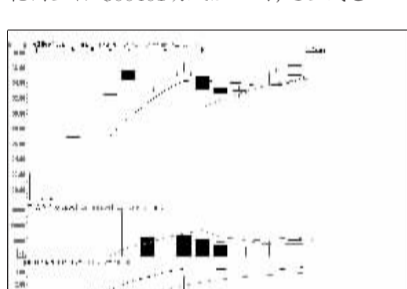
晋西车轴 (600495): 中线上升趋势, 介入



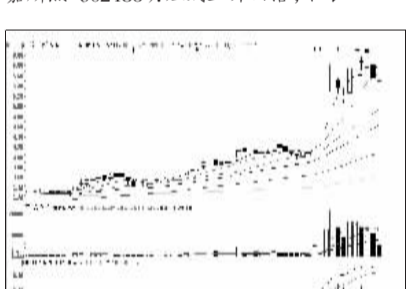
兰石重装 (603169): 风险加剧, 兑现盈利



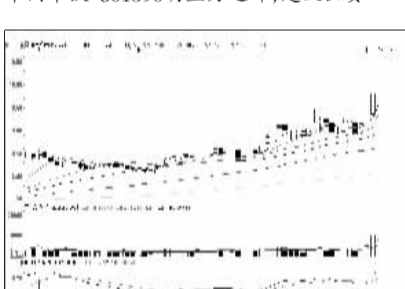
兴业银行 (601166): 谨防回调, 中线看多



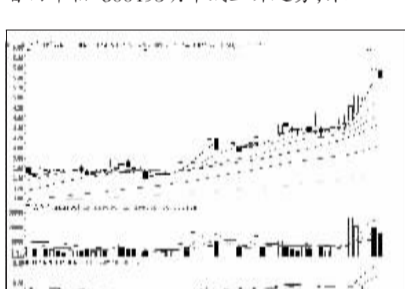
九州药业 (603456): 形态较好, 持有为主



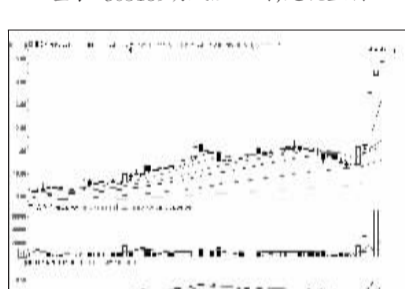
九龙山 (600555): 趋势向好, 近期介入



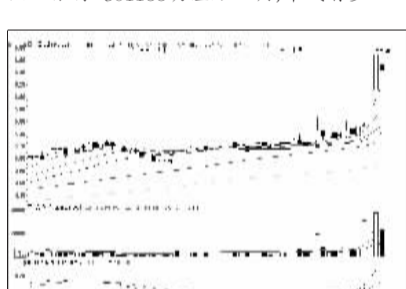
南京银行 (601009): 有回调压力, 观望



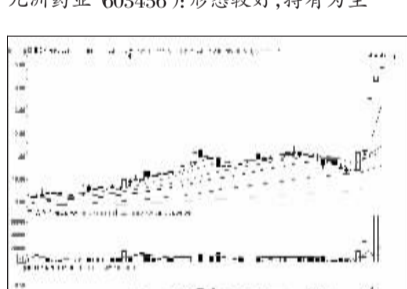
太原重工 (600169): 买气有所不济, 不跟



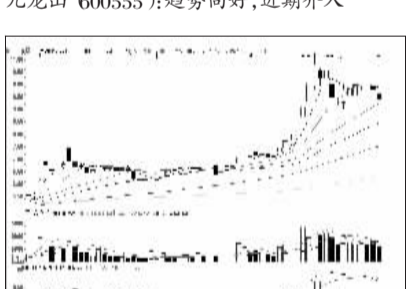
界龙实业 (600836): 谨防回调, 逢高派现



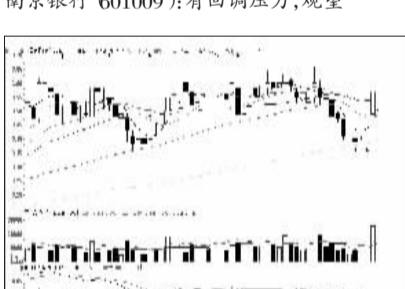
中国铁建 (601186): 高位震荡, 动能不足



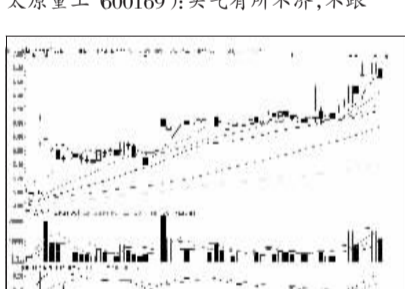
界龙实业 (600836): 谨防回调, 逢高派现



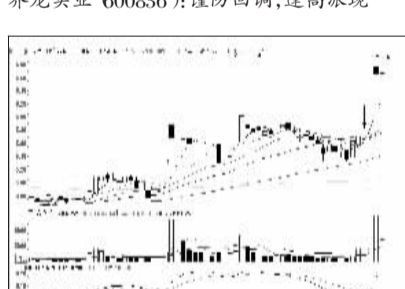
鲁抗医药 (600789): 上攻能量不足, 出货



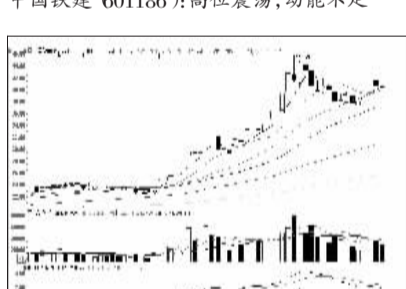
中国联通 (600050): 多方力量强大, 介入



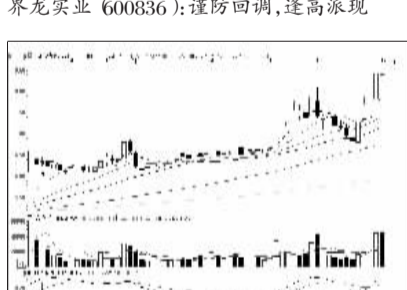
隧道股份 (600820): 上攻能量不足, 不跟



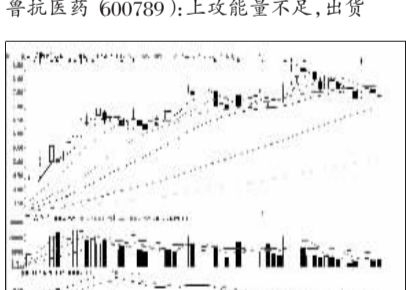
珠海港 (000507): 上攻能量不足, 高抛



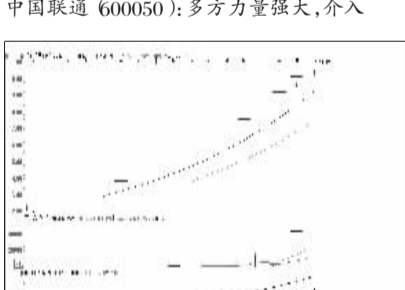
中国船舶 (600150): 上行能量萎缩, 高抛



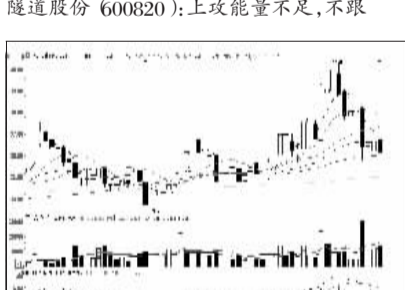
东湖高新 (600133): 强势特征明显, 介入



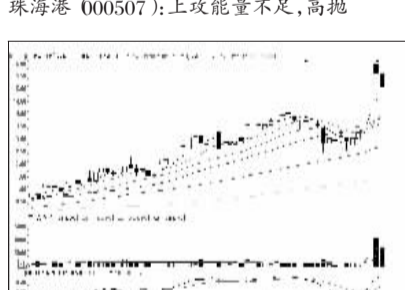
盛屯矿业 (600711): 有继续下行可能



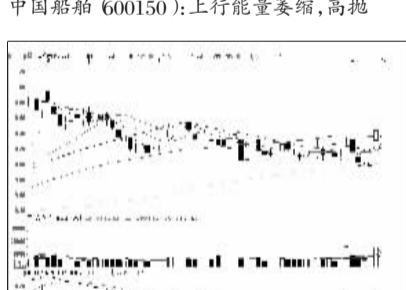
兰石重装 (603169): 风险加剧, 兑现盈利



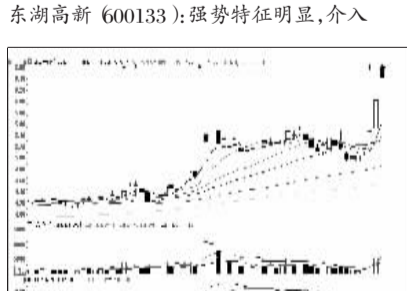
上海家化 (600315): 弱势整理, 观望为主



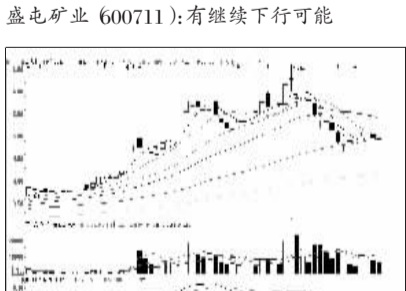
中能电气 (800062): 上行有阻力, 高抛



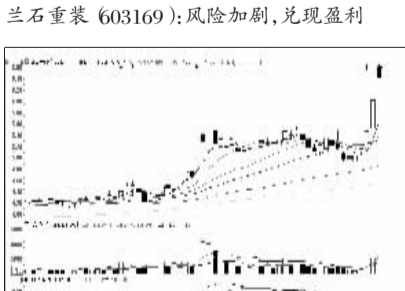
平安银行 (000001): 谨防回调, 中线看多



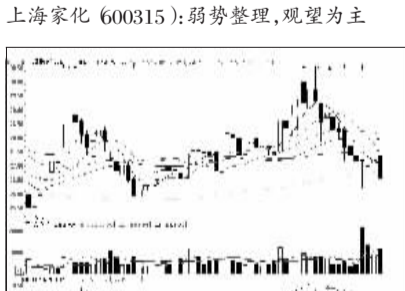
连云港 (601008): 连续上攻多日, 持有



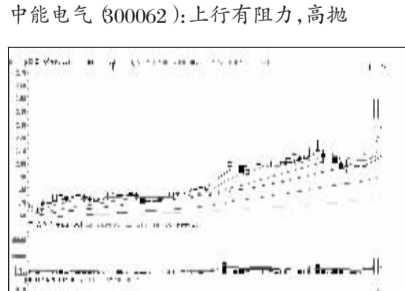
鑫科材料 (600255): 弱势格局, 建议离场



连云港 (601008): 连续上攻多日, 持有



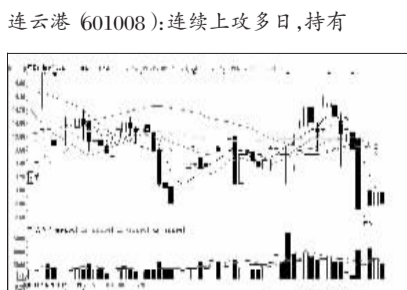
康缘药业 (600557): 弱势特征明显, 止损



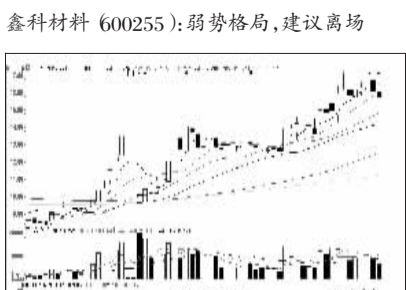
马钢股份 (600808): 显著放量, 增添变数



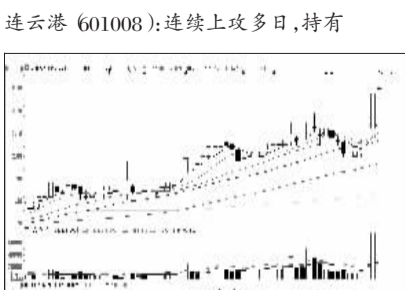
交运股份 (600676): 主力洗盘, 低吸为宜



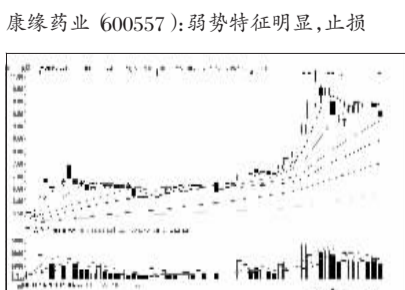
通源石油 (800164): 低位震荡, 观望为主



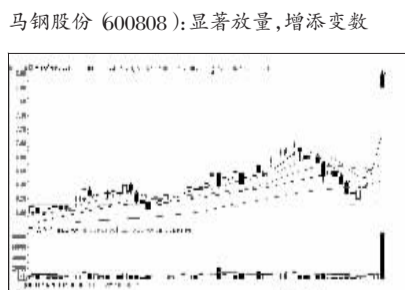
中体产业 (600158): 上行有阻力, 出货为主



海南航空 (600221): 回调幅度不大, 低吸



鲁抗医药 (600789): 上攻能量不足, 出货



交运股份 (600676): 主力洗盘, 低吸为宜



看股票 买彩票 全搞定 大智慧手机版 d.wapgw.cn