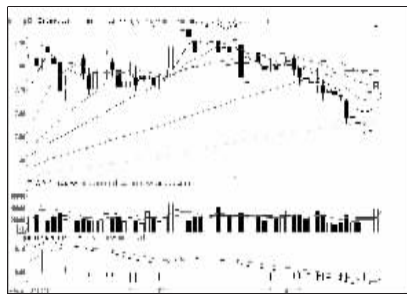


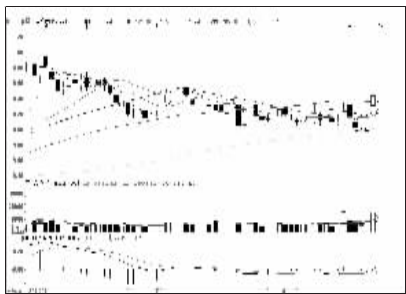
沪深10大权重股

沪市10大权重



中国石油(601857):上试60日线,关注

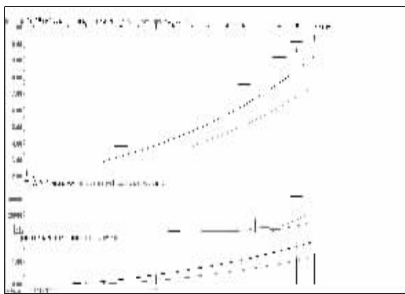
深市10大权重



平安银行(000001):谨防回调,中线看多

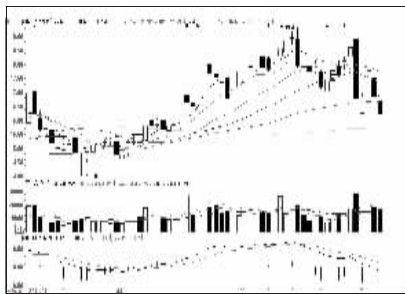
周涨跌幅前10

涨幅前10



兰石重装(603169):风险加剧,兑现盈利

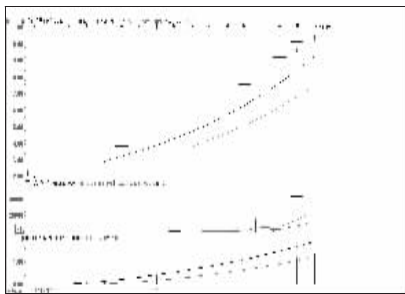
跌幅前10



华平股份(600074):重启跌势,止损为宜

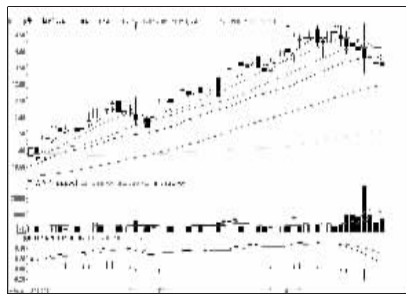
连续涨跌前10

连涨前10

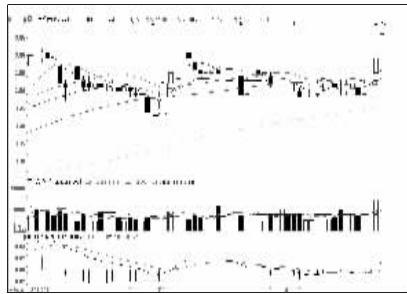


兰石重装(603169):风险加剧,兑现盈利

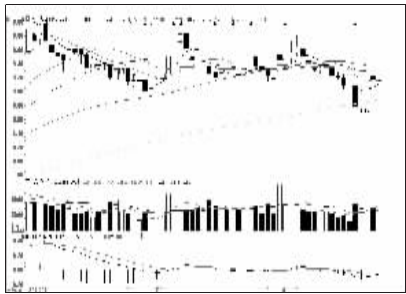
连跌前10



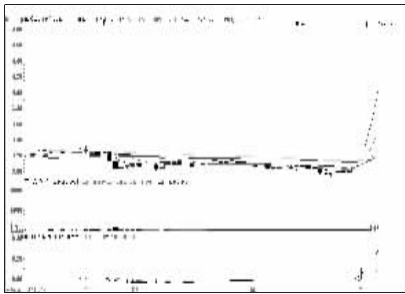
浙江永强(002489):仍有下调压力,减磅



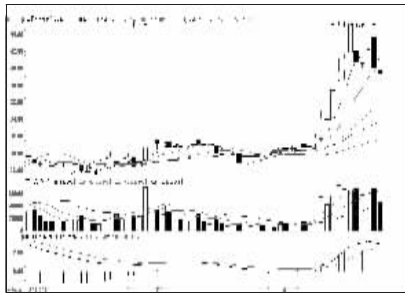
工商银行(601398):量价配合,看高一线



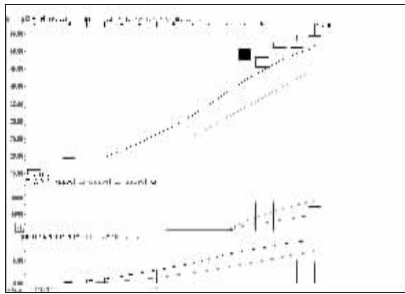
万科A(000002):弱势反弹,不追涨



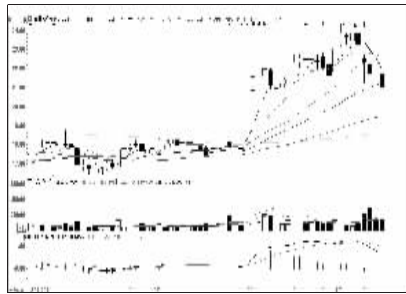
华银电力(600744):短线涨幅大,不追



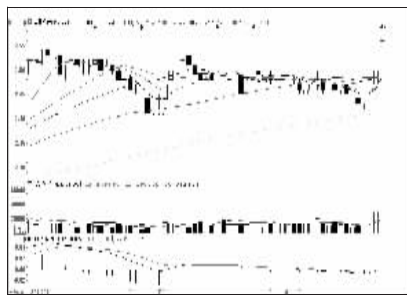
联明股份(603006):止升回落,不跟为主



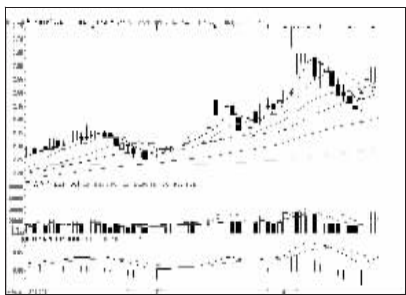
京天利(600399):冲高回落,谨防调整



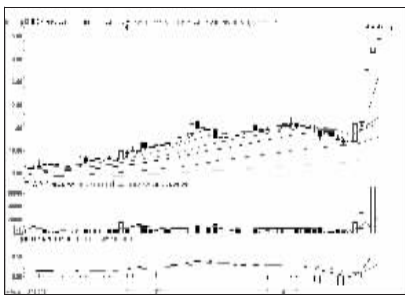
亚厦股份(002375):逆势下跌,关注支撑



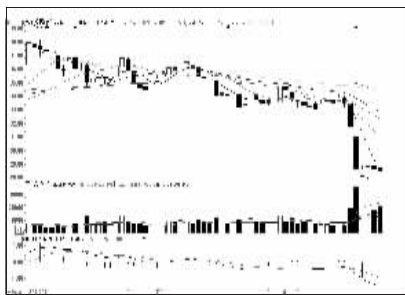
农业银行(601288):连续上攻多日,观望



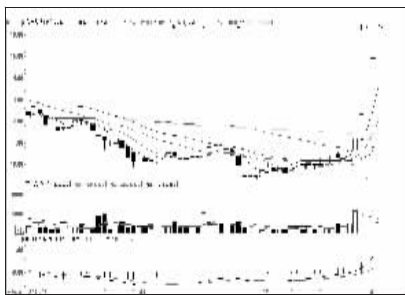
京东方A(000725):逼近前高,继续持有



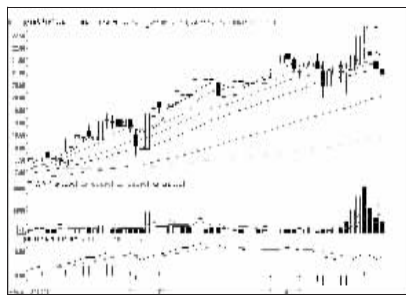
界龙实业(600836):谨防回调,逢高派现



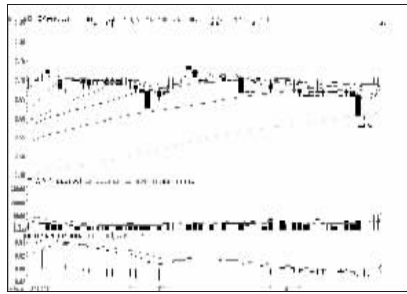
双汇发展(000895):走势偏弱,换股操作



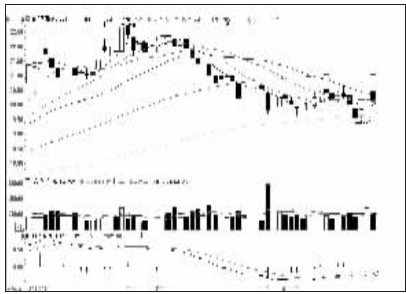
东土科技(600353):连续涨停,继续持有



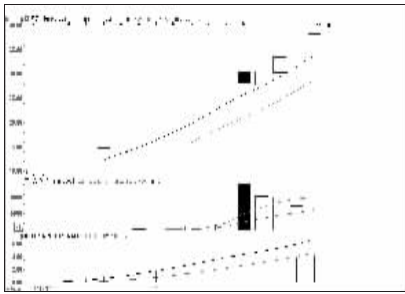
雅克科技(002409):主力惜售,适当低吸



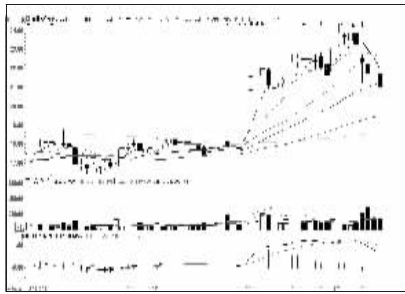
中国银行(601988):连续上攻多日,不追涨



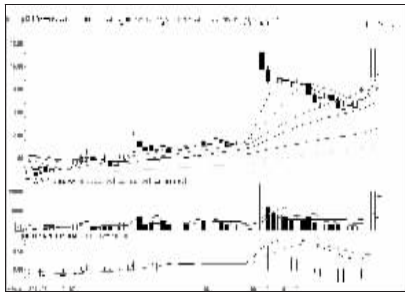
美的集团(000333):上有压制,谨慎为妙



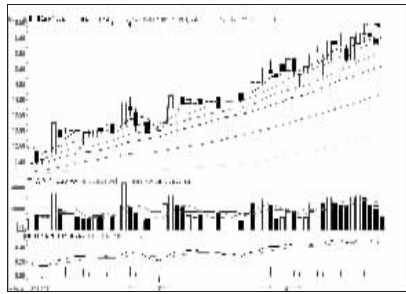
花园生物(600401):风险加剧,适当减仓



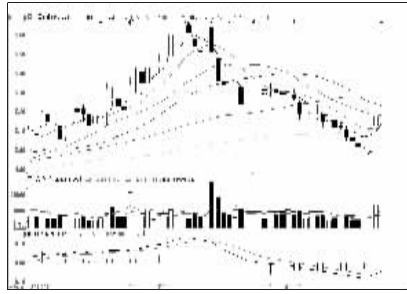
亚厦股份(002375):逆势下跌,关注支撑



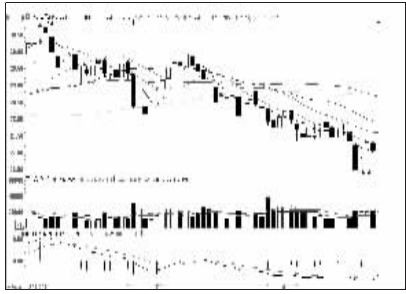
北部湾港(000582):形态良好,可以跟进



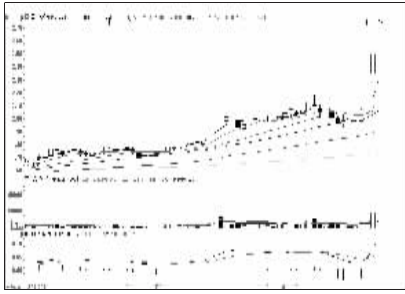
复旦复华(600624):仍有上行空间,关注



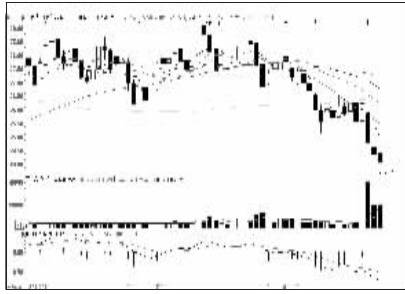
中国石化(600028):底部反弹,暂时观望



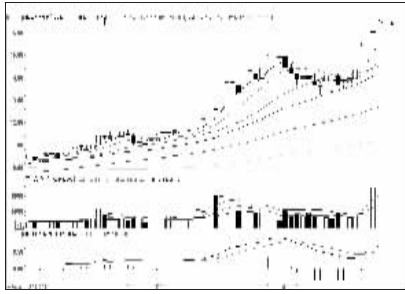
格力电器(000651):上有压制,建议观望



马钢股份(600808):显著放量,增添变数



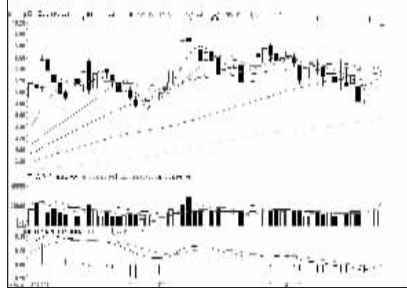
广联达(002410):下跌趋势,止损为宜



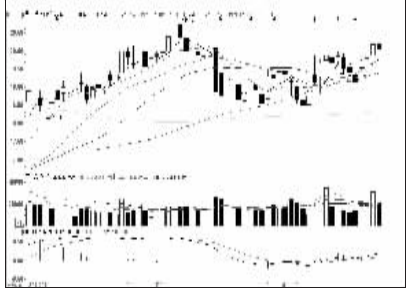
华声股份(002670):仍有上行空间,吸纳



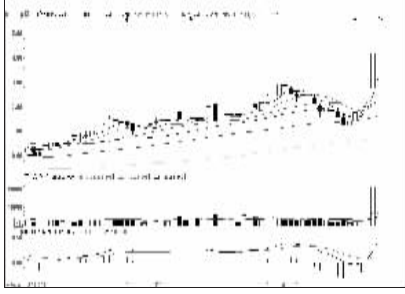
广联达(002410):下跌趋势,止损为宜



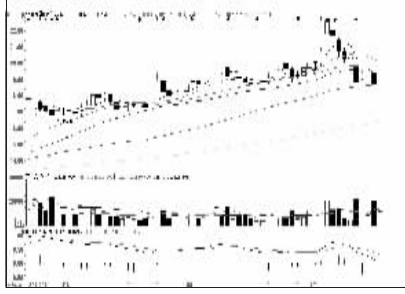
中国人寿(601628):短线或有回调压力



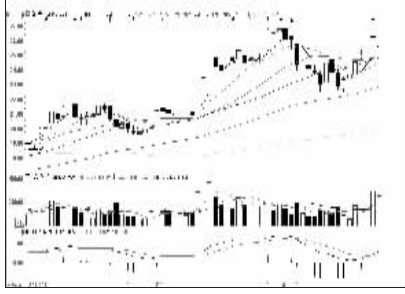
海康威视(002415):震荡盘升,持有为主



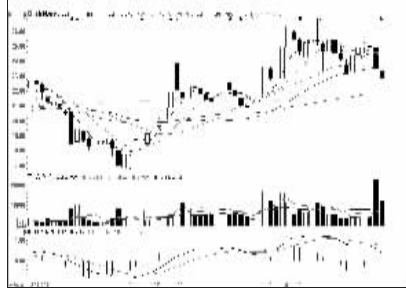
双环传动(002472):浮盈较重,兑现盈利



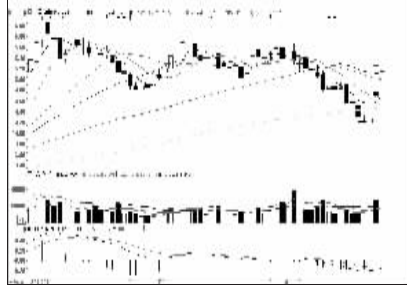
北大医药(000788):回调整理,低位关注



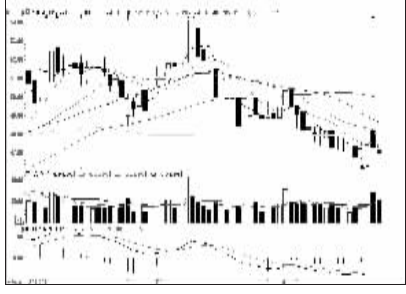
新大陆(000997):强势特征明显,跟进



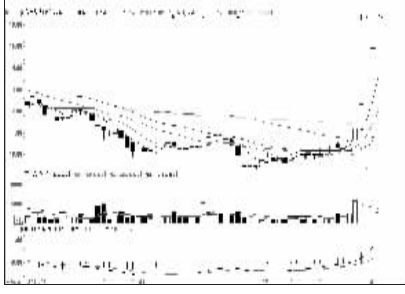
信邦制药(002390):窄幅震荡,换股操作



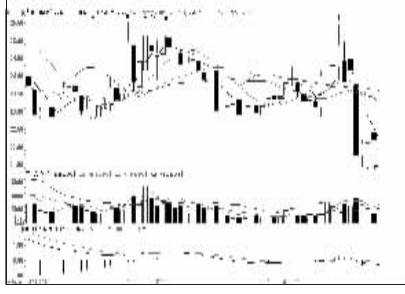
中国神华(601088):上有压力,逢高离场



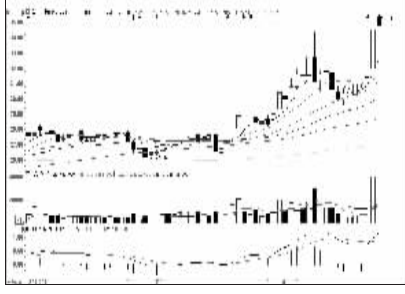
比亚迪(002594):有破位苗头,建议止损



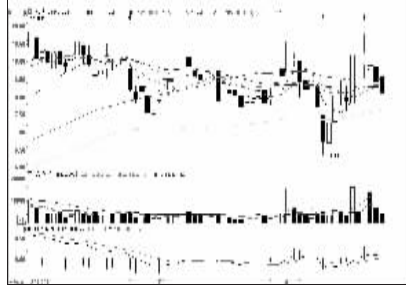
东土科技(600353):连续涨停,继续持有



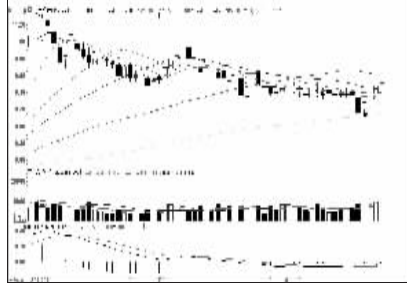
龙大肉食(002726):横盘震荡,离场为宜



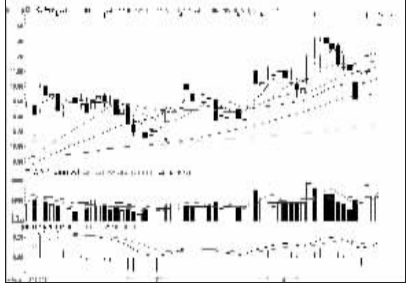
华兰生物(002007):仍有向上空间,吸纳



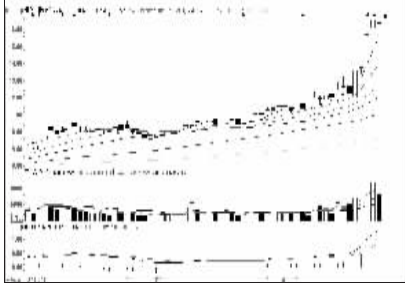
上海普天(600680):仍有向上空间,低吸



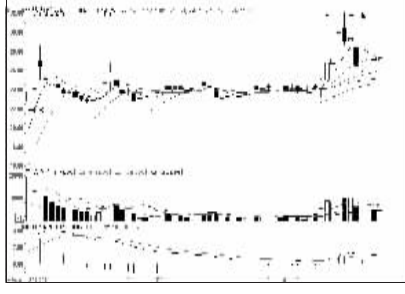
招商银行(600036):连续上攻多日,观望



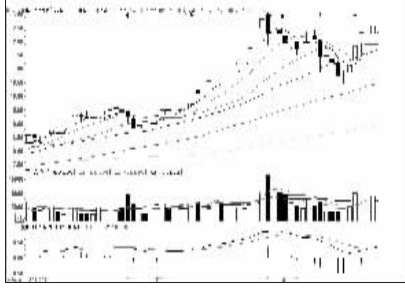
广发证券(000776):或有回调,中线看多



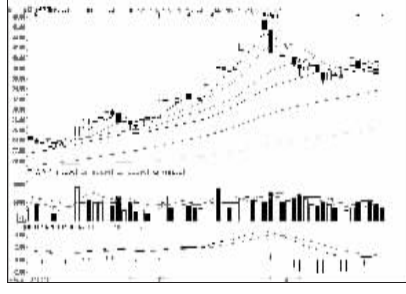
晋亿实业(601002):高位震荡,谨防调整



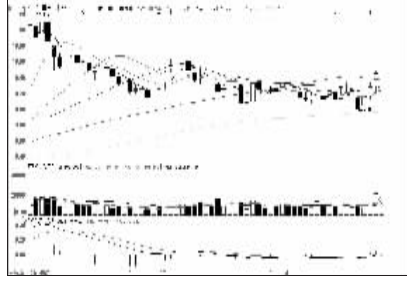
北特科技(603009):整理形态,建议观望



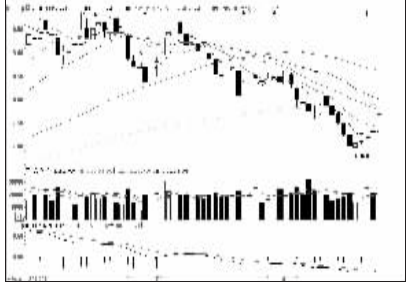
华伍股份(600095):量能不齐,建议不跟



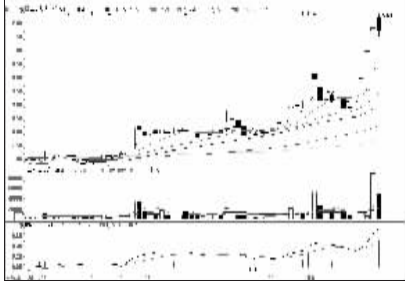
信威集团(600485):走势较弱,离场为妙



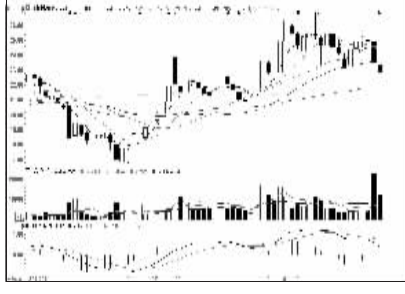
兴业银行(601166):谨防回调,中线看多



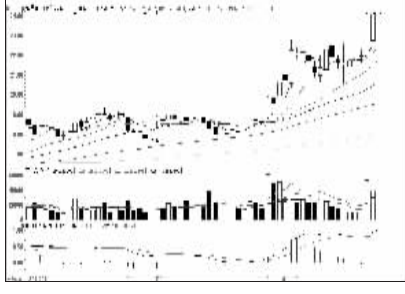
五粮液(000858):下跌中途反弹,不跟



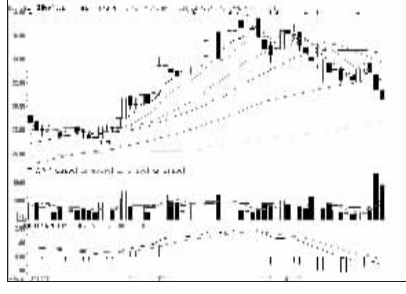
泰豪科技(600590):回调幅度不大,低吸



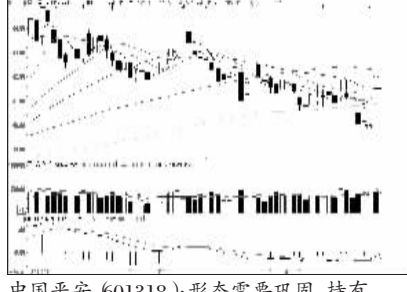
信邦制药(002390):窄幅震荡,换股操作



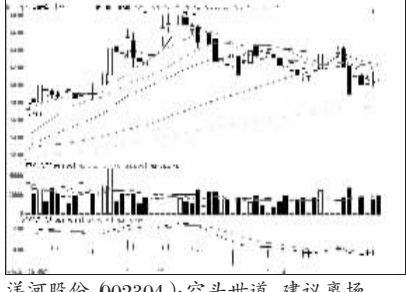
索菲亚(002572):量能萎缩,谨防回调



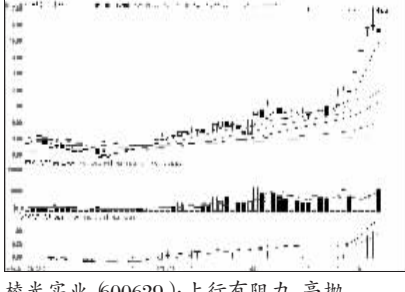
鑫富药业(002019):有超跌反弹可能



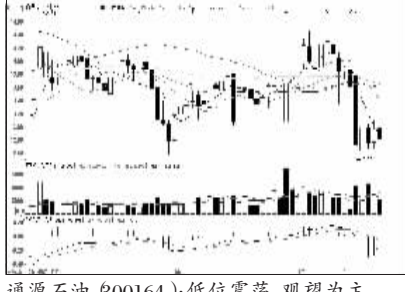
中国平安(601318):形态需要巩固,持有



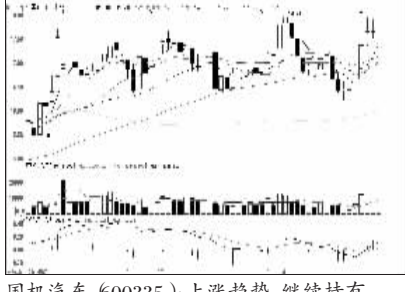
洋河股份(002304):空头世道,建议离场



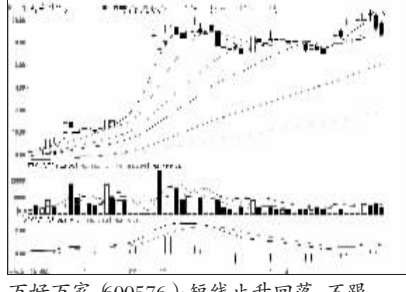
棱光实业(600629):上行有阻力,高抛



通源石油(600164):低位震荡,观望为主



国机汽车(600335):上涨趋势,继续持有



万好万家(600576):短线止升回落,不跟