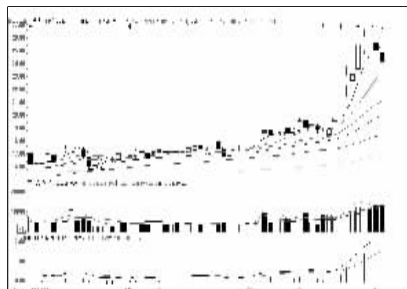


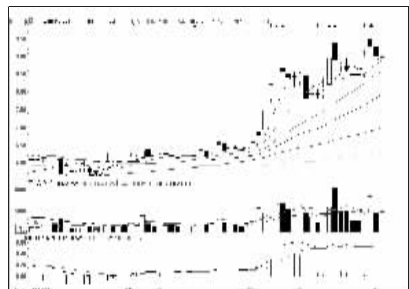
股东人数增减前10

股东人数减少前10



光韵达 (300227): 短线趋弱, 观望为主

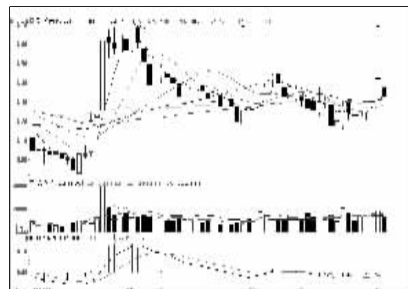
股东人数增加前10



天津海运 (600751): 震荡蓄势, 短线回避

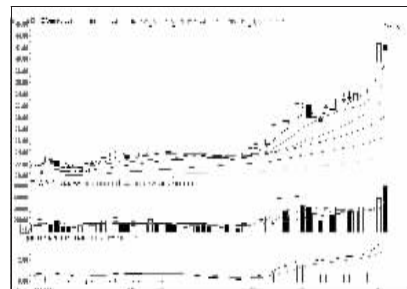
一周资金流入流出金额前10

资金流入金额前10



民生银行 (600016): 弱势格局, 回避

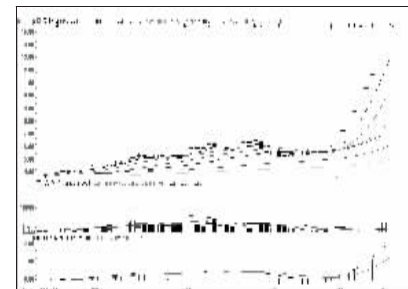
资金流出金额前10



中国船舶 (600150): 多头格局, 短线不追

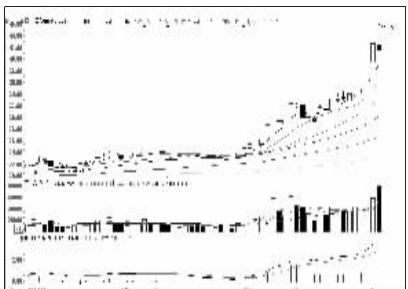
周成交金额

成交突增前10

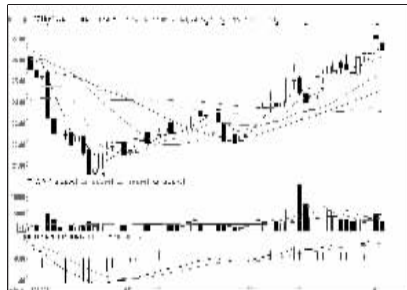


闽福发A (000547): 高位天量, 落袋为安

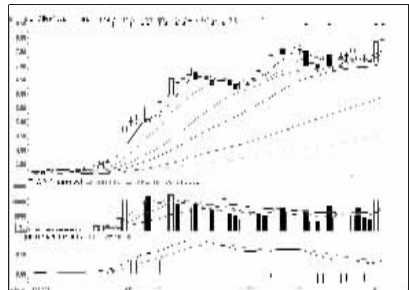
成交金额前8



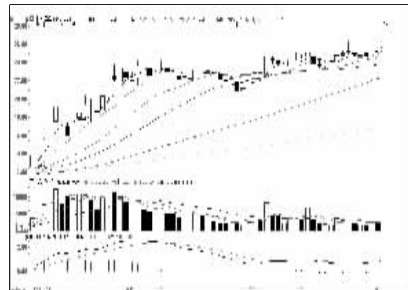
中国船舶 (600150): 多头格局, 短线不追



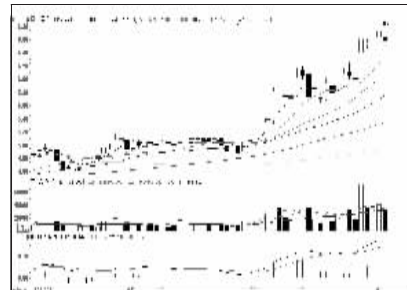
中瑞思创 (800078): 中期向好, 逢低介入



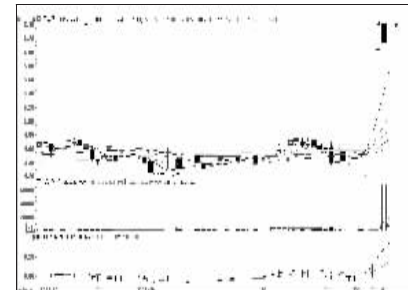
盛屯矿业 (600711): 放量上攻, 持股



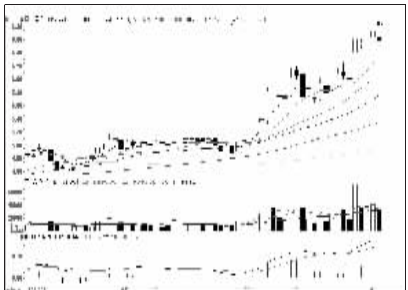
北方导航 (600435): 强势特征明显, 介入



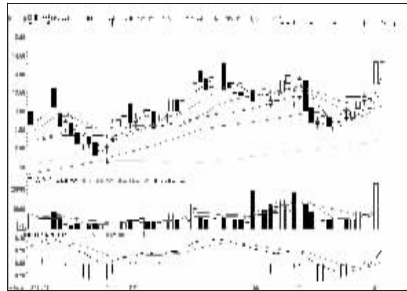
中国重工 (601989): 攻势趋弱, 不宜追涨



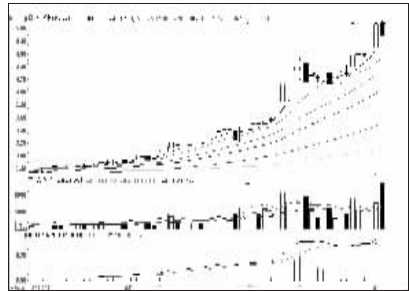
西安民生 (000564): 强势特征, 择机介入



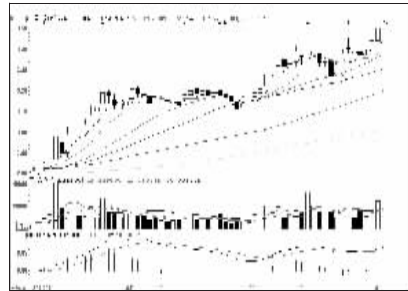
中国重工 (601989): 攻势趋弱, 不宜追涨



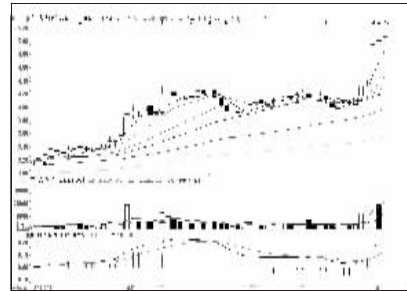
英唐智控 (800131): 重拾升势, 择机介入



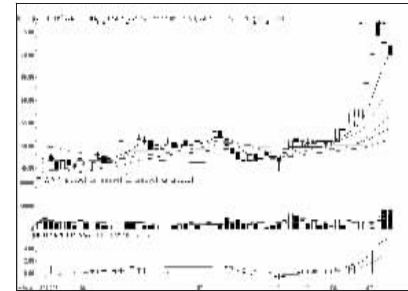
四川路桥 (600039): 多头格局, 逢低吸纳



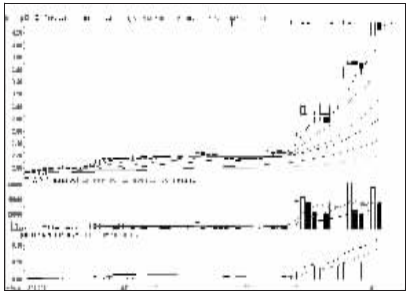
中国建筑 (601668): 走势稳健, 持股



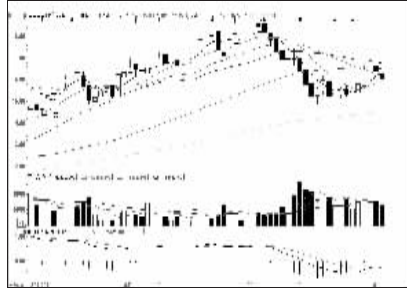
方正科技 (600601): 强势特征, 持股为主



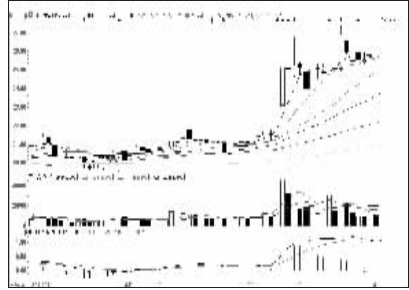
石基信息 (002153): 出货迹象, 离场



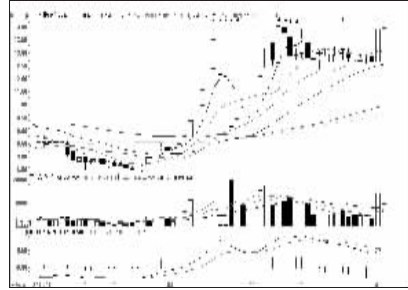
中国一重 (601106): 压力新增, 逢高减仓



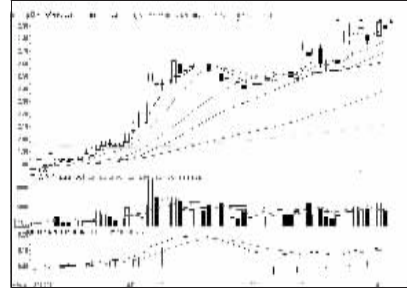
瑞丰光电 (800241): 反弹遇阻, 短线回避



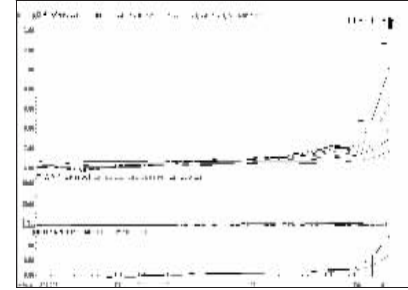
浙江世宝 (002703): 蓄势上攻, 看高一线



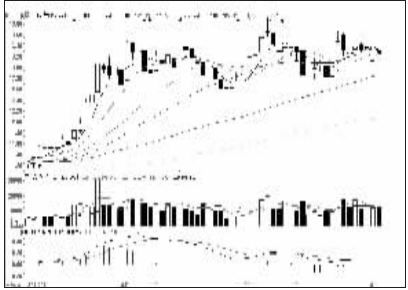
中体产业 (600158): 有望重拾升势, 关注



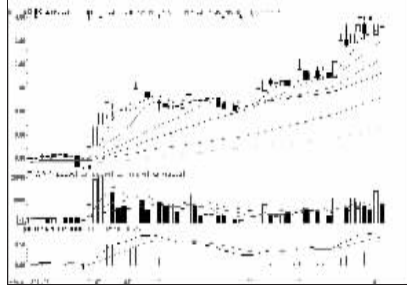
宝钢股份 (600010): 稳步向上, 持股



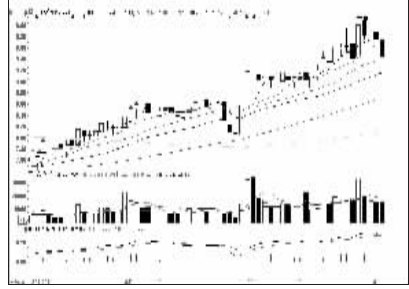
禾嘉股份 (600093): 谨防回调, 落袋为安



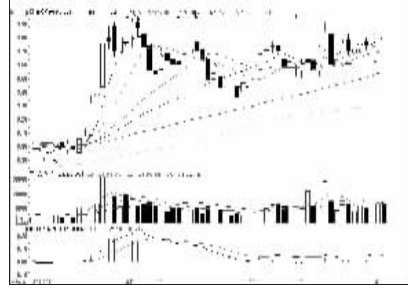
中信证券 (600030): 窄幅整理, 观望为主



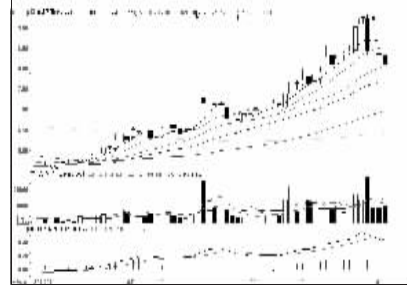
圣银高科 (800087): 压力增大, 减仓观望



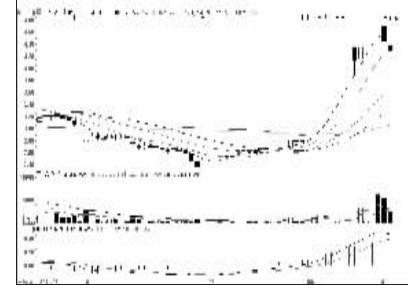
一拖股份 (601038): 短线趋弱, 减仓观望



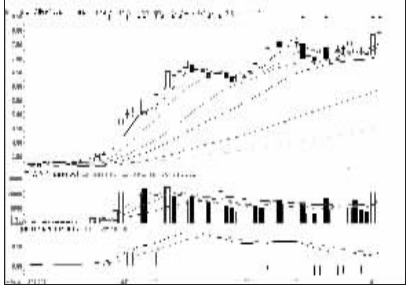
浦发银行 (600000): 均线支撑较强, 持股



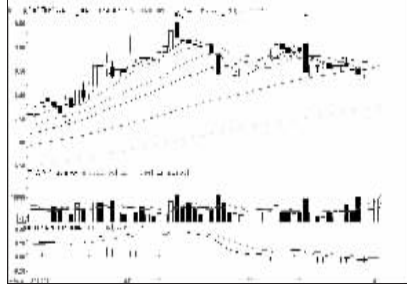
亚盛集团 (600108): 短线趋弱, 减仓观望



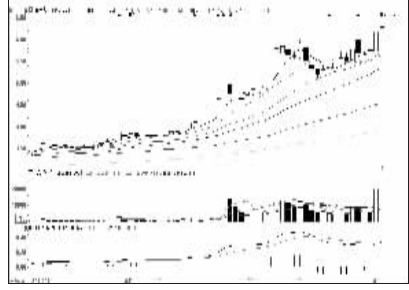
*ST仪化 (600871): 走势趋弱, 离场观望



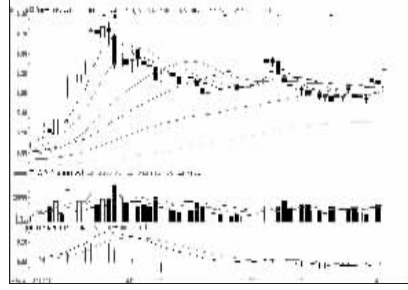
盛屯矿业 (600711): 放量上攻, 持股



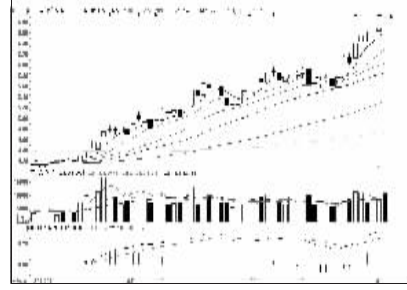
方大集团 (000055): 价升量增, 看高一线



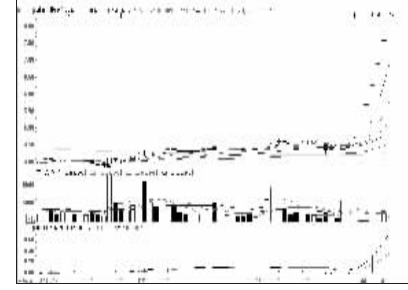
鑫科材料 (600255): 有出货迹象, 离场



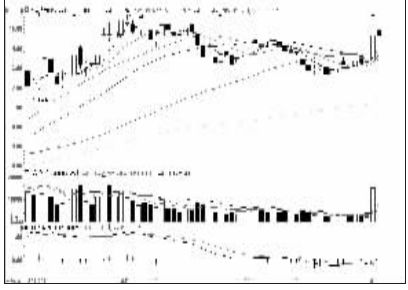
保利地产 (600048): 买气增加, 关注



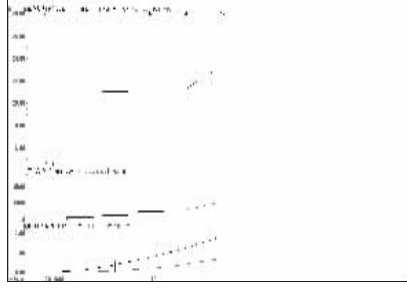
太平洋 (601099): 有出货迹象, 离场



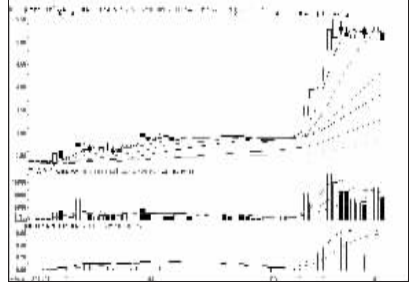
美利纸业 (000815): 无量涨停, 继续持有



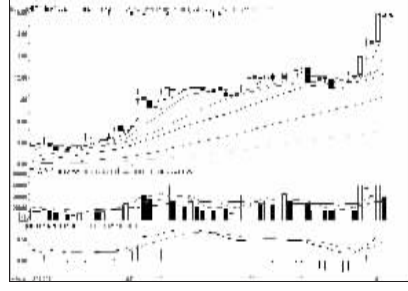
万向钱潮 (000559): 下方支撑较强, 持股



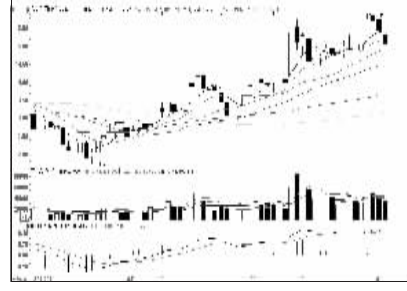
华懋科技 (603306): 一字涨停, 继续持股



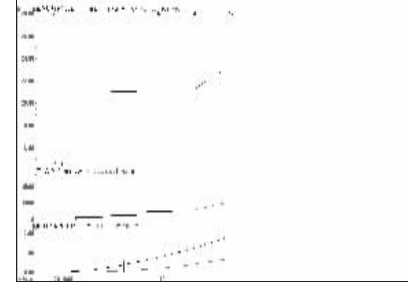
新能泰山 (000720): 仍需调整, 暂时回避



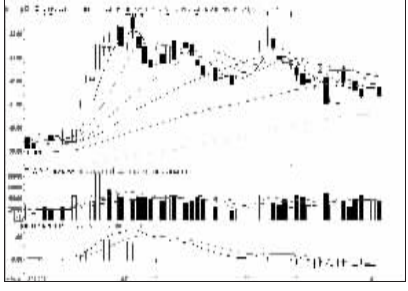
晋西车轴 (600495): 多头格局, 择机加仓



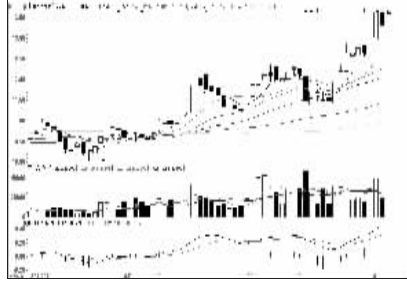
东软集团 (600718): 中期形态尚好, 关注



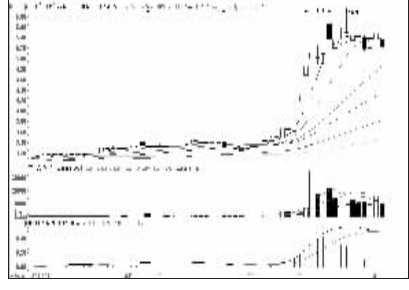
华懋科技 (603306): 一字涨停, 继续持股



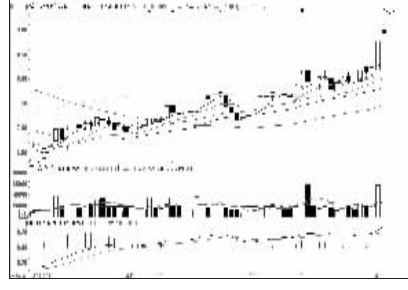
中国平安 (601318): 年线支撑较强, 持股



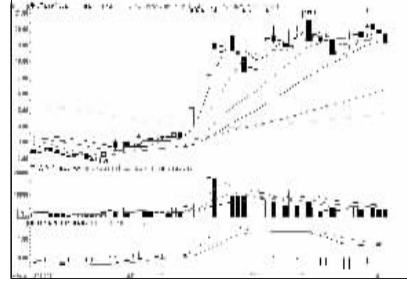
安利股份 (800218): 多头格局, 持股为主



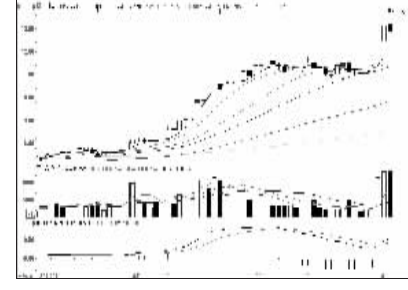
中信重工 (601608): 上攻乏力, 逢高出局



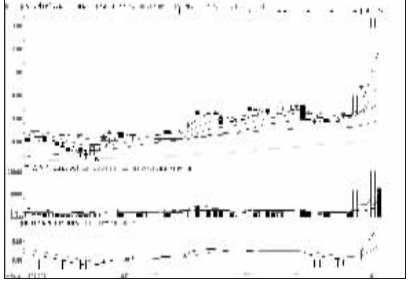
强生控股 (600662): 上方阻力较大, 观望



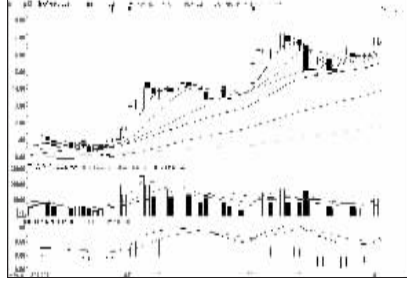
浙报传媒 (600633): 弱势特征, 出局



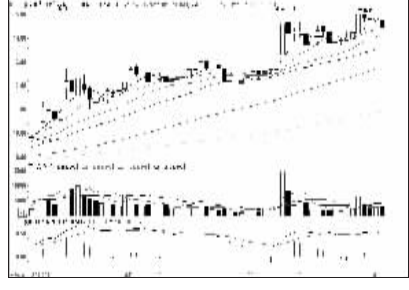
康强电子 (002119): 下方支撑较强, 持股



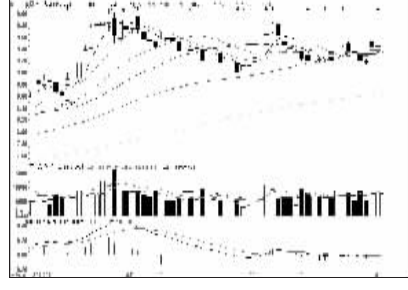
榕基软件 (002474): 上行趋势, 逢低介入



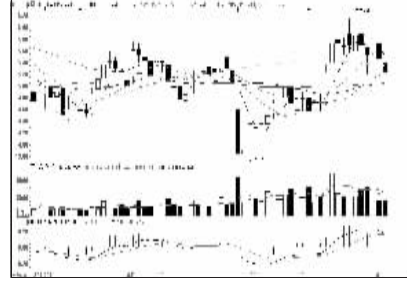
拓邦股份 (002139): 谨防回调, 持股不追



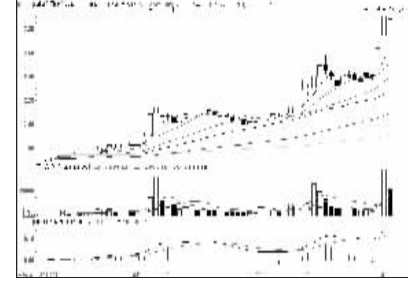
亿利达 (002686): 买气减弱, 兑现离场



万科A (000002): 蓄势突破, 持股待涨



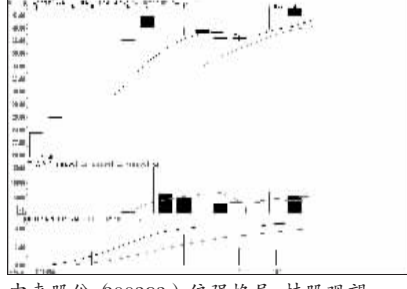
浙江龙盛 (600352): 走势趋弱, 离场观望



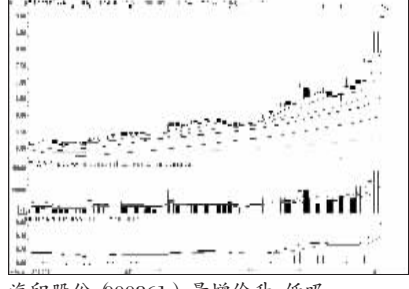
美好集团 (000667): 多头格局, 逢低吸纳



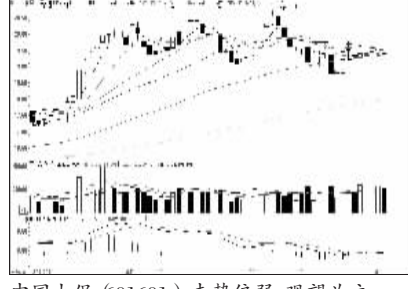
新华制药 (000756): 中期向好, 逢低介入



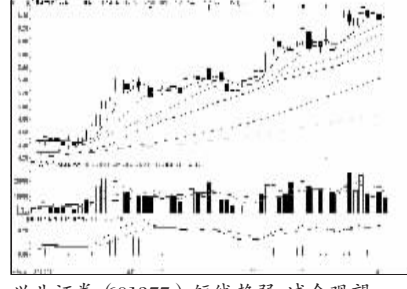
中来股份 (800393): 偏强格局, 持股观望



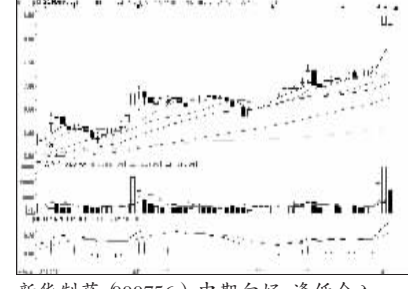
海印股份 (000861): 量增价升, 低吸



中国太保 (601601): 走势偏弱, 观望为主



兴业证券 (601377): 短线趋弱, 减仓观望



新华制药 (000756): 中期向好, 逢低介入



看股票 买彩票
全搞定
大智慧手机版
d.wapgw.cn