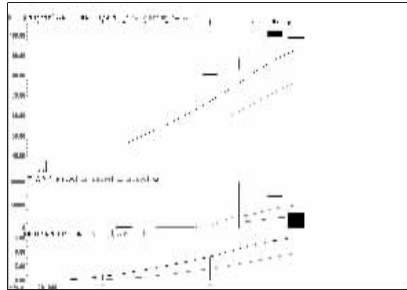


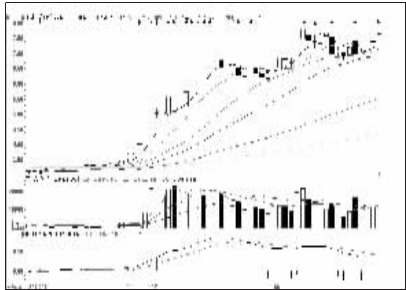
股东人数增减前10

股东人数减少前10



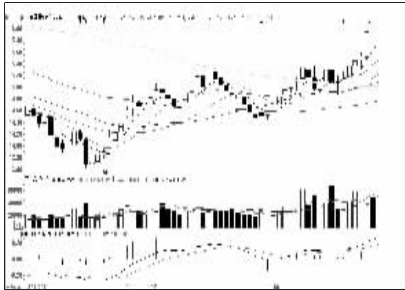
腾信股份 (800392):打开涨停,适当兑现

股东人数增加前10



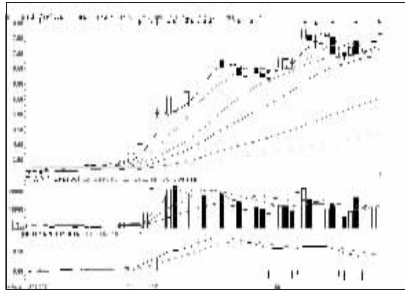
盛屯矿业 (600711):弱势格局,离场为主

资金流入金额前10



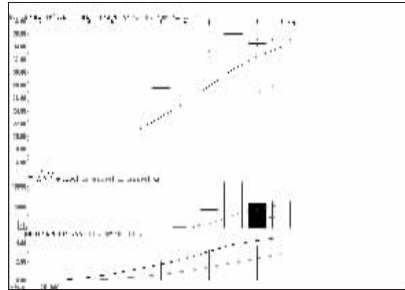
康美药业 (600518):上行可能性较大

资金流出金额前10



盛屯矿业 (600711):弱势格局,离场为主

成交突增前10

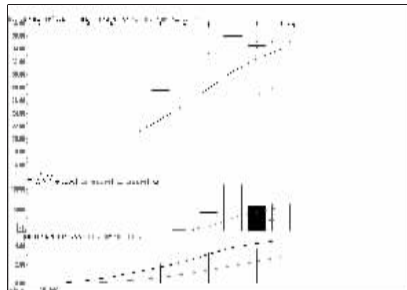


好利来 (002729):打开涨停,逐步止盈

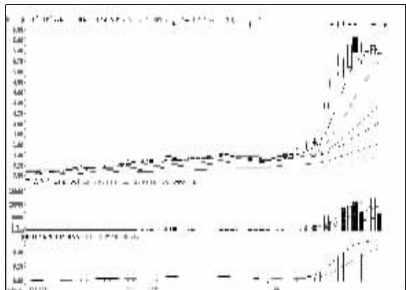
成交金额前8



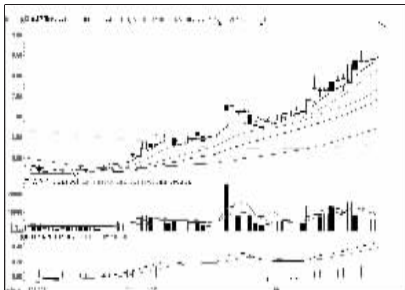
中信证券 (600030):强势震荡,持股观望



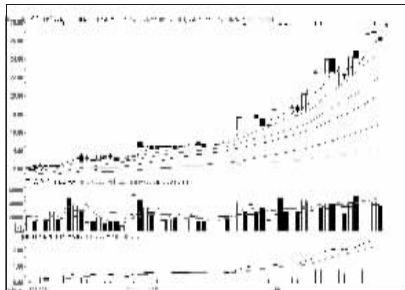
好利来 (002729):打开涨停,逐步止盈



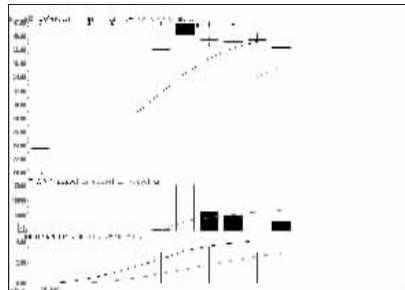
中信重工 (601608):趋势向好,伺机介入



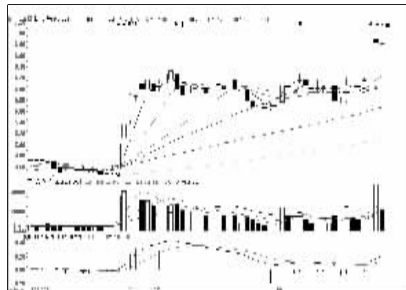
亚盛集团 (600108):调整压力加大



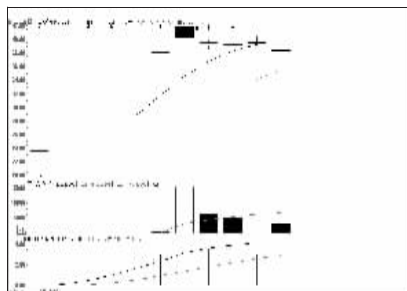
中航重机 (600765):上攻能量不足,高抛



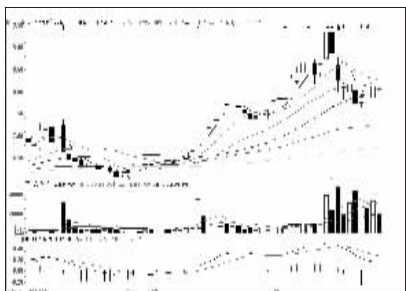
中采股份 (800393):高位震荡,落袋为安



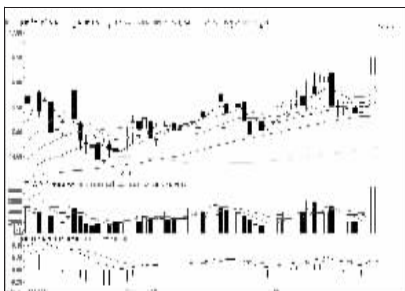
长江证券 (000783):趋势向好,持有为宜



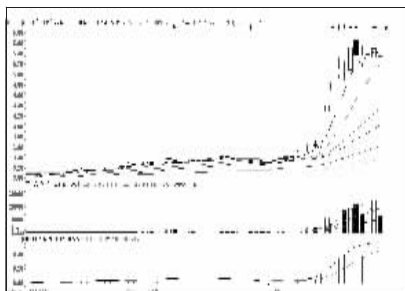
中采股份 (800393):高位震荡,落袋为安



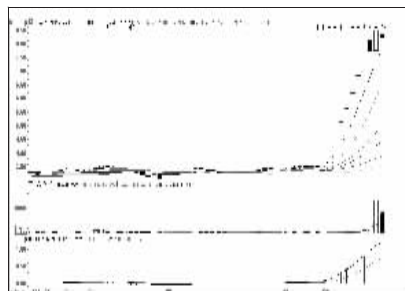
青松股份 (600132):走势较弱,离场观望



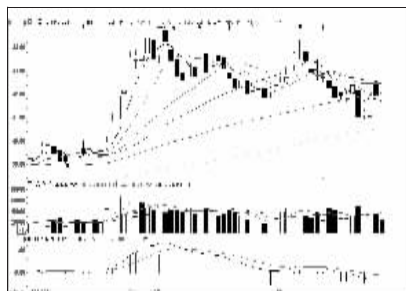
鹏博士 (600804):上涨格局,逢低进场



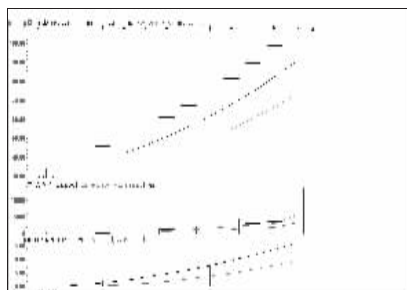
中信重工 (601608):趋势向好,伺机介入



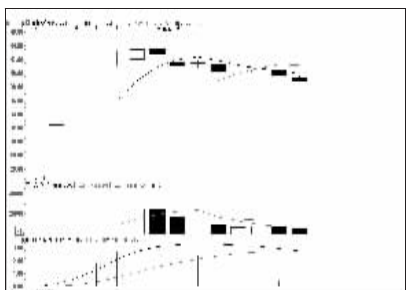
江泉实业 (600212):买气减弱,出货为主



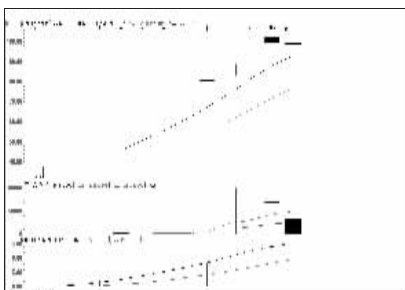
中国平安 (601318):短线企稳,观望为宜



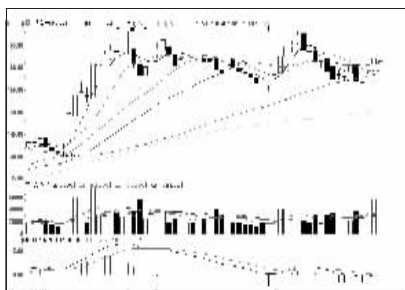
天和防务 (800397):止盈增多,谨防回调



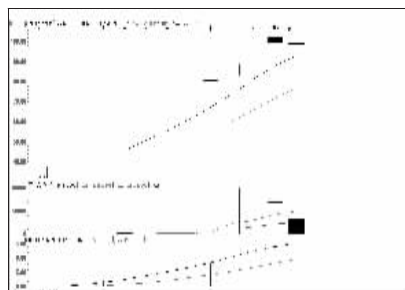
亚邦股份 (603188):或将企稳,观望为主



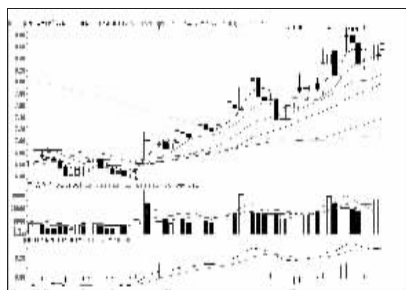
腾信股份 (800392):打开涨停,适当兑现



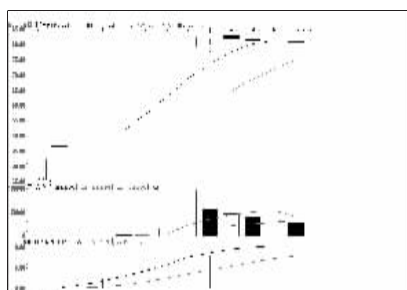
贵州茅台 (600519):趋势向好,近期加仓



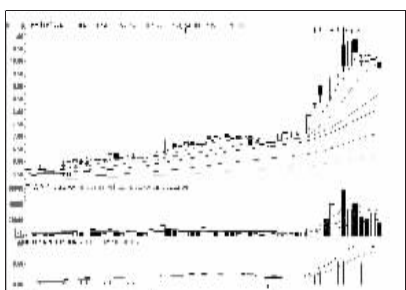
腾信股份 (800392):打开涨停,适当兑现



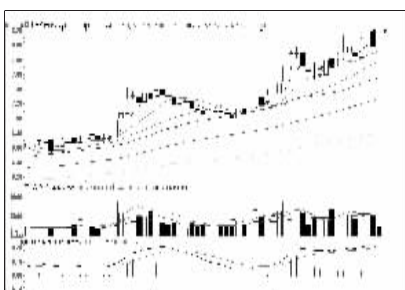
苏宁云商 (002024):上行趋势,持有为主



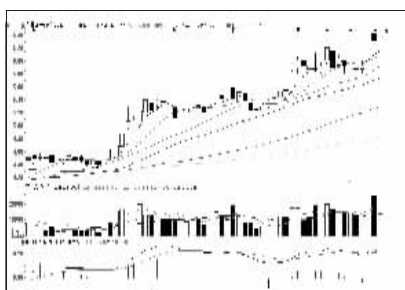
迪瑞医疗 (800396):高位震荡,部分止盈



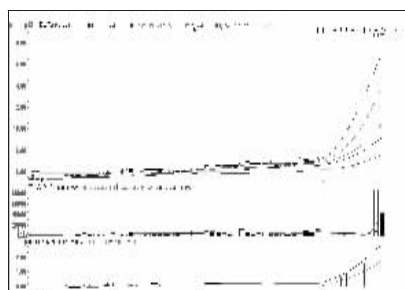
三联商社 (600898):买气不济,出货为主



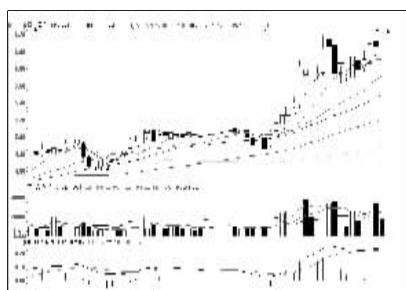
北京银行 (601169):形态尚好,观望为主



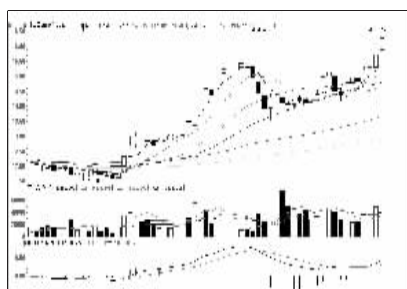
兴业证券 (601377):下跌趋势,注意风险



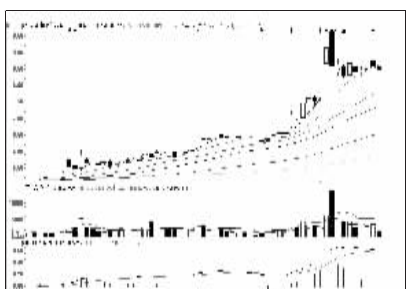
东源电器 (002074):高位震荡,持股观望



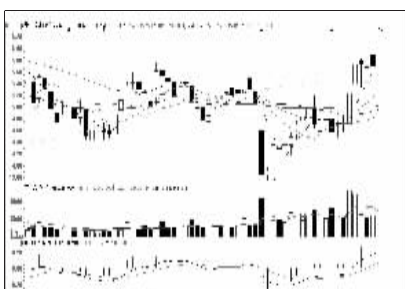
中国重工 (601989):强势格局,继续看好



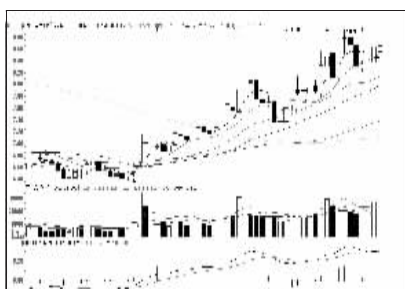
郴电国际 (600969):多方强大,跟进为主



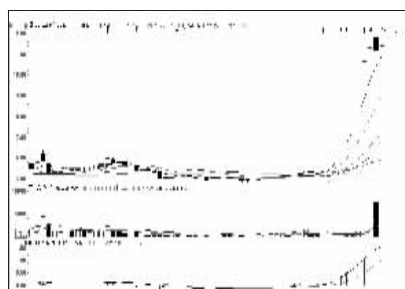
红旗连锁 (002697):弱势特征明显,减仓



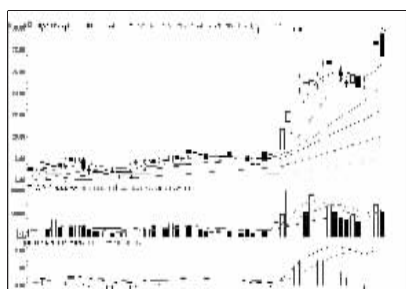
浙江龙盛 (600352):蓄势震荡,持股观望



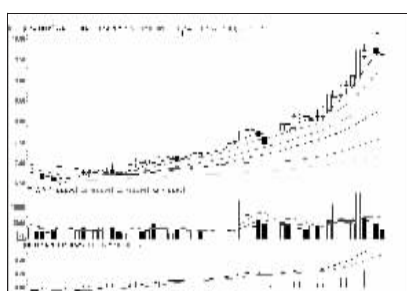
苏宁云商 (002024):上行趋势,持有为主



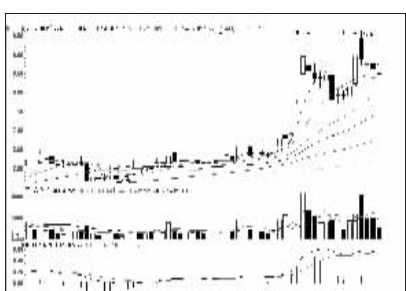
福成五丰 (600965):高位震荡,持股观望



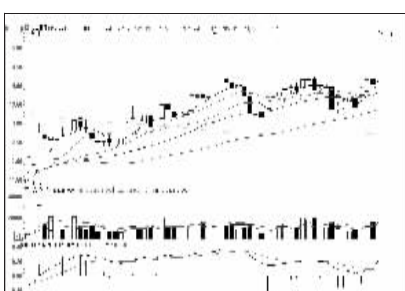
洪都航空 (600316):买气减弱,出货为主



惠泉啤酒 (600573):量能萎缩,不宜追高



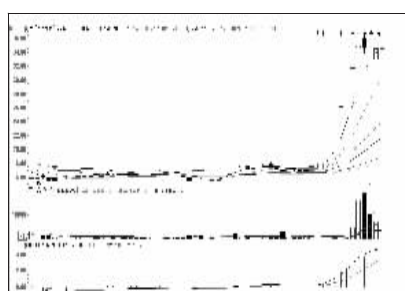
天津海运 (600751):买气减弱,高抛为主



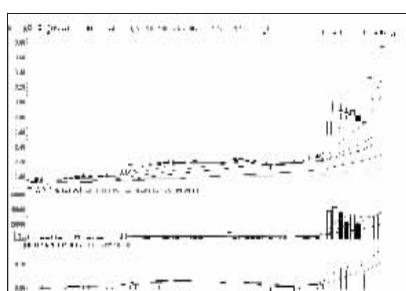
烽火通信 (600498):或有回调,持股观望



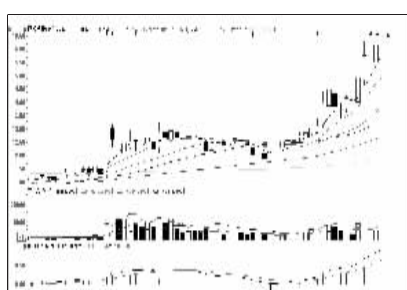
民生银行 (600016):表现乏力,换股操作



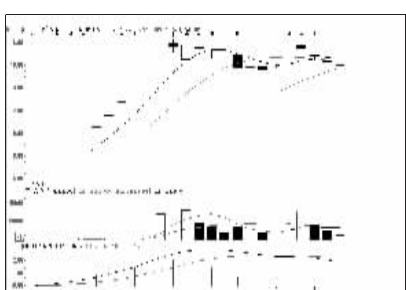
百润股份 (002568):继续看好,逢低进场



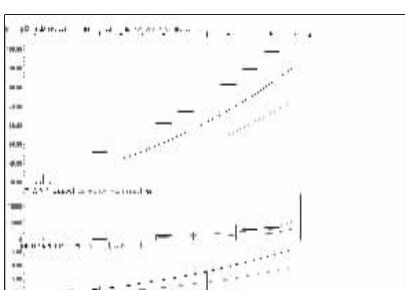
中国一重 (601106):形态需巩固,不追涨



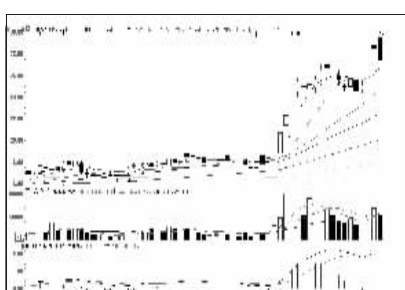
闽发铝业 (002578):多头进场,吸纳为主



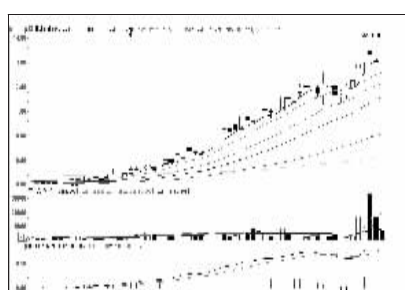
长白山 (603099):多头行情可望维持



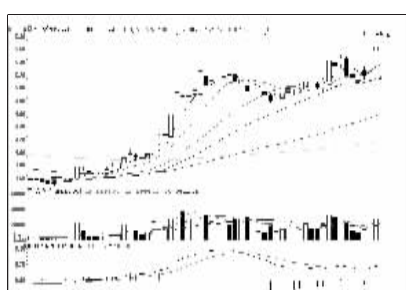
天和防务 (800397):止盈增多,谨防回调



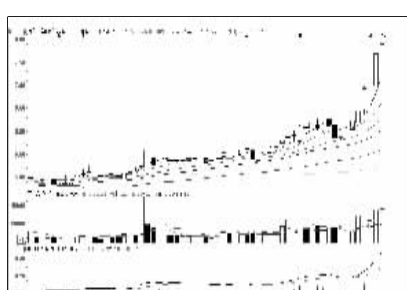
洪都航空 (600316):买气减弱,出货为主



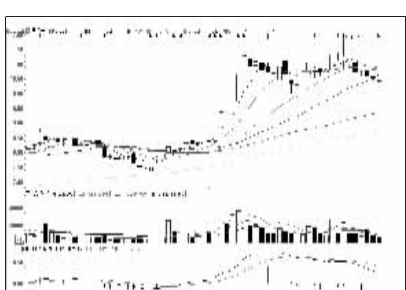
荣盛石化 (002493):中期升势,继续持有



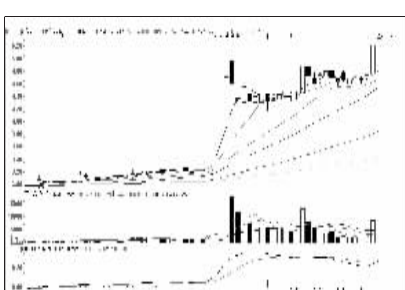
包钢股份 (600010):上升趋势,看高一线



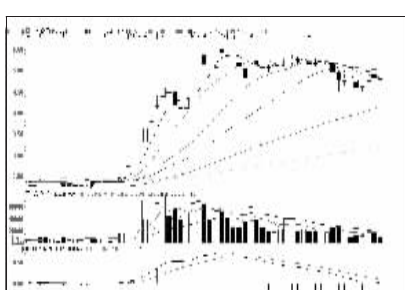
茂化实华 (000637):涨势良好,持有为主



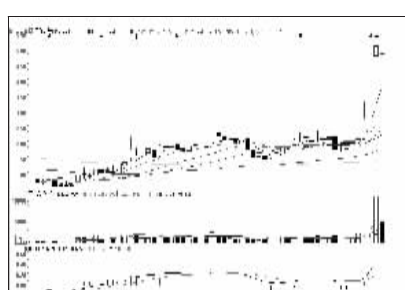
荣乐金 (600247):走势较弱,离场为主



东风汽车 (600006):强势格局,持有为主



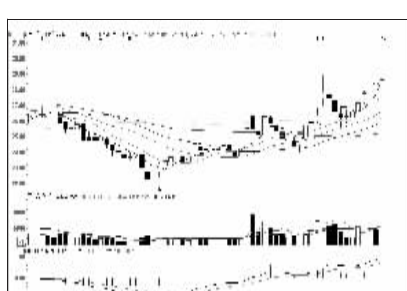
永泰能源 (600157):弱势格局,出局观望



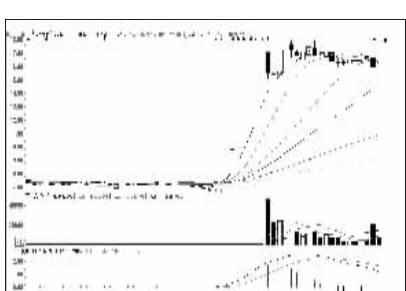
西部证券 (002673):高位震荡,持股观望



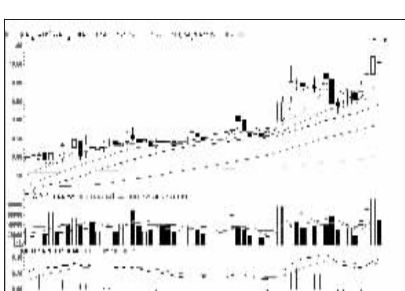
南通科技 (600862):形态需要巩固,持有



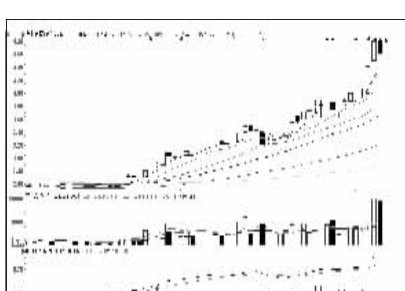
新文化 (800336):调整压力加大,谨慎



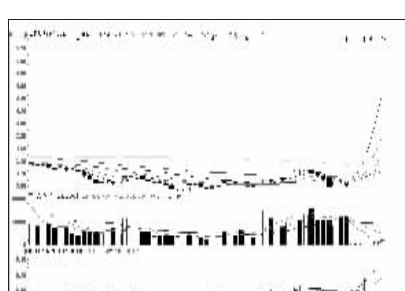
中技控股 (600634):弱势特征明显,离场



航天机电 (600151):冲高回落,谨防回调



湖北能源 (000883):跌势难持久,观望



南通科技 (600862):形态需要巩固,持有



看股票 买彩票 全搞定 大智慧手机版 d.wapgw.cn