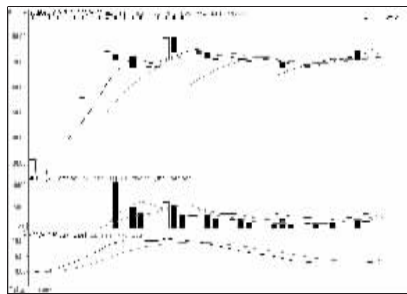


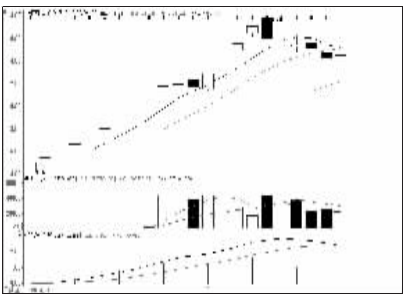
## 股东人数增减前10

股东人数减少前10



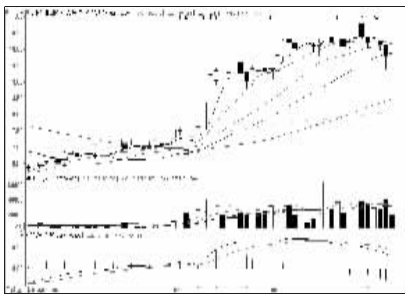
莎普爱思 (603168):多头格局,入货为宜

股东人数增加前10



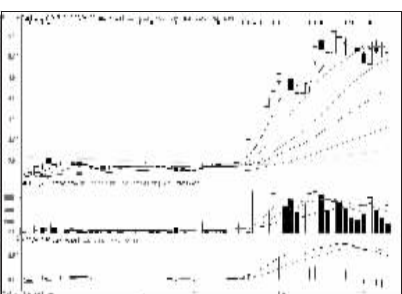
中材节能 (603126):涨势未尽,近期介入

资金流入金额前10



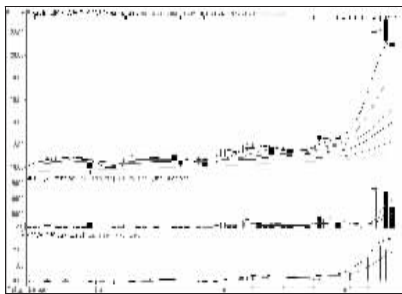
运盛实业 (600767):整理蓄势,近期观望

资金流出金额前10



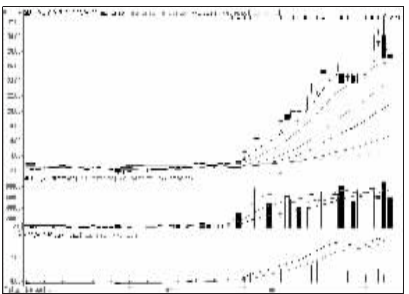
永泰能源 (600157):关键位置,谨慎观望

成交突增前10



松德股份 (600173):买气减弱,出货为主

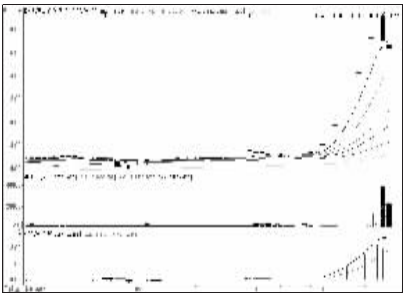
成交金额前8



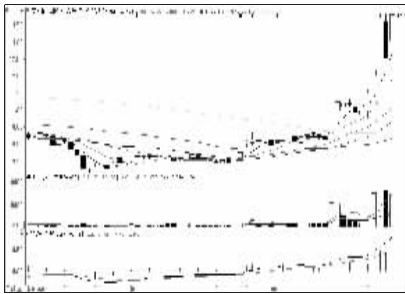
深天马A (000050):止升回落,不跟为主



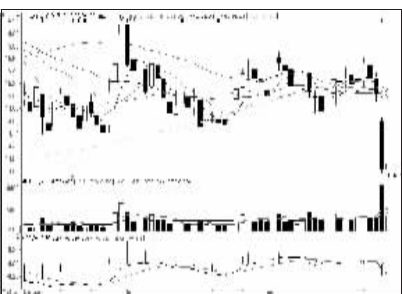
秦川发展 (600837):平台整理,近期观望



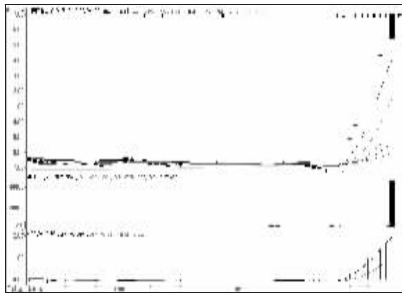
松辽汽车 (600715):高位回调,兑现获利



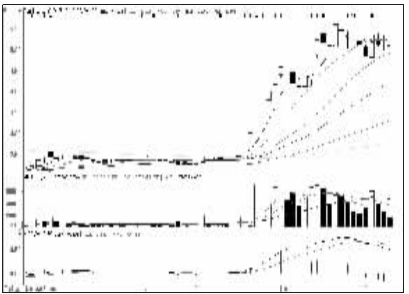
友阿股份 (002277):多头格局,介入为主



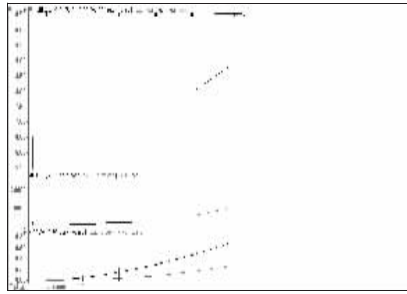
浙江龙盛 (600352):跌破平台,谨慎为妙



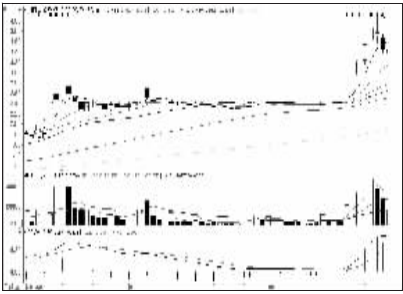
中技控股 (600634):有回调压力,观望



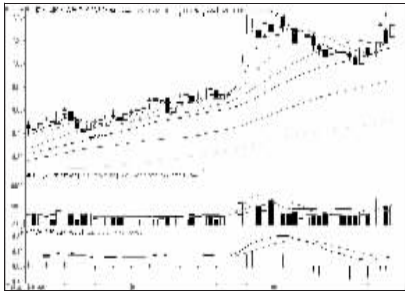
永泰能源 (600157):关键位置,谨慎观望



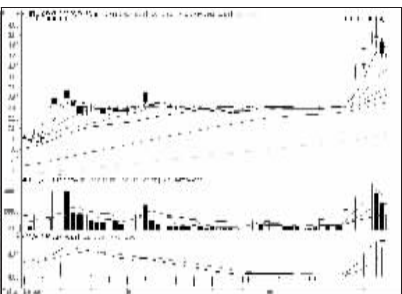
长白山 (603099):连续涨停,关注量能



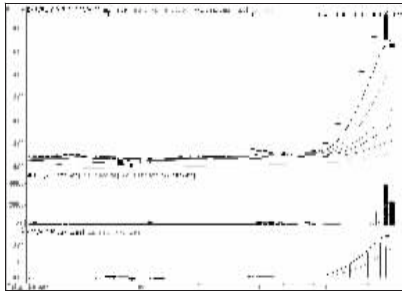
营口港 (600317):多头市道,持有为主



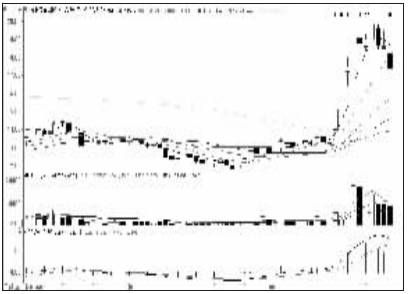
北京银行 (601169):上涨态势良好,持有



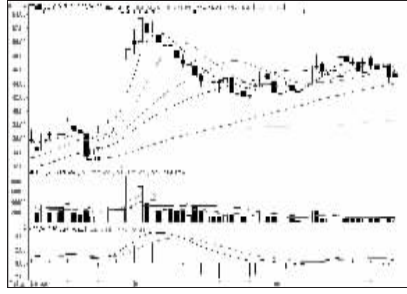
营口港 (600317):多头市道,持有为主



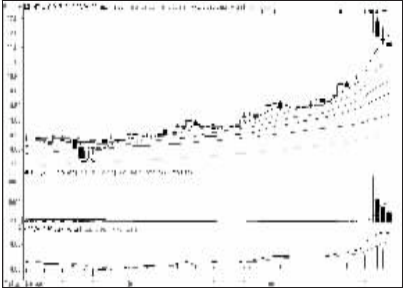
松辽汽车 (600715):高位回调,兑现获利



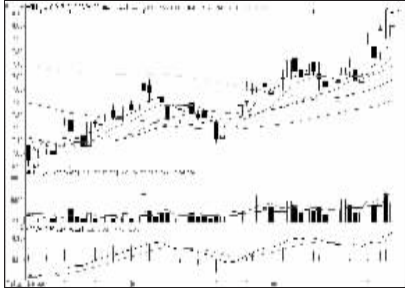
浙报传媒 (600633):主力惜售,持股观望



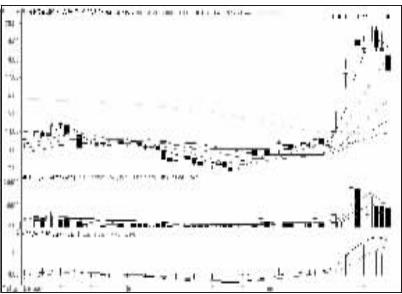
安硕信息 (600380):走势转弱,近期卖出



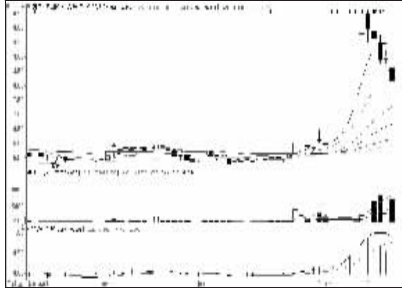
鑫科材料 (600255):上攻力度减弱,不跟



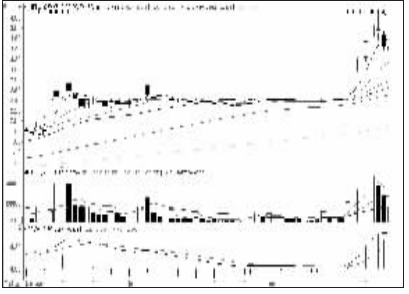
海油工程 (600583):有望继续走强,持有



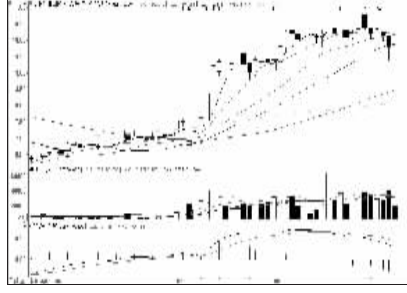
浙报传媒 (600633):主力惜售,持股观望



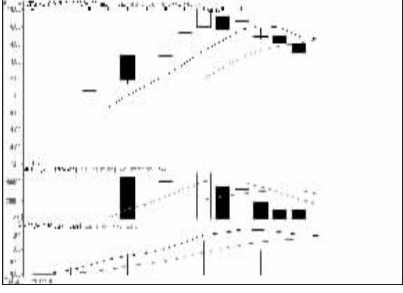
焦作万方 (000612):回调幅度不大,低吸



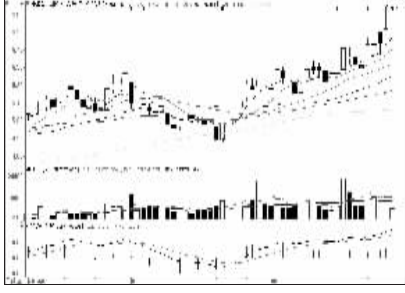
营口港 (600317):多头市道,持有为主



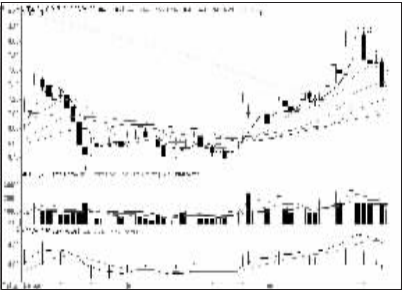
运盛实业 (600767):整理蓄势,近期观望



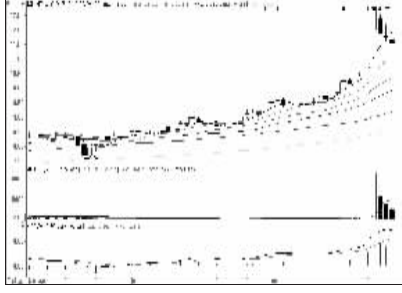
禾丰牧业 (603609):量能低迷,震荡走势



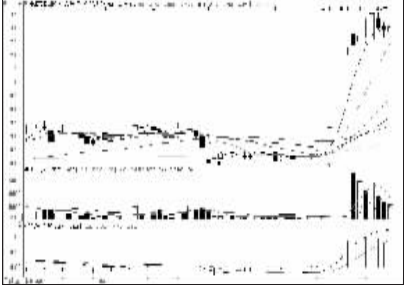
中国石化 (600283):趋势向上,继续持有



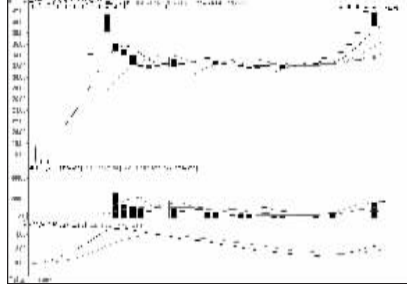
苏宁云商 (002024):整理蓄势格局,观望



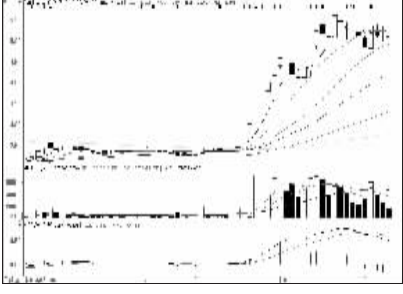
鑫科材料 (600255):上攻力度减弱,不跟



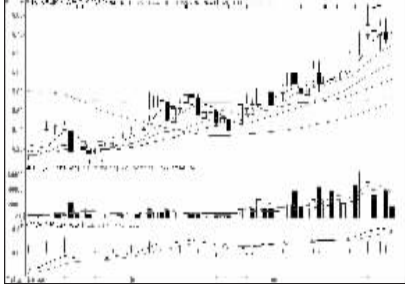
中国宝安 (000009):多头市道,近期跟入



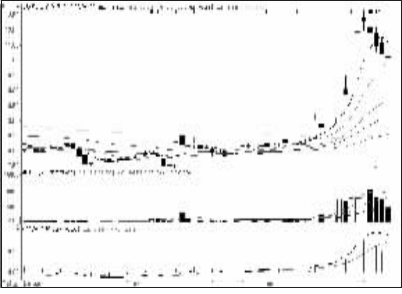
一心堂 (002727):多头格局,加入为主



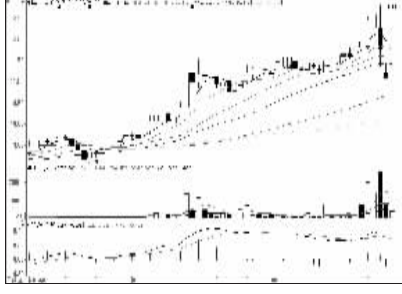
永泰能源 (600157):关键位置,谨慎观望



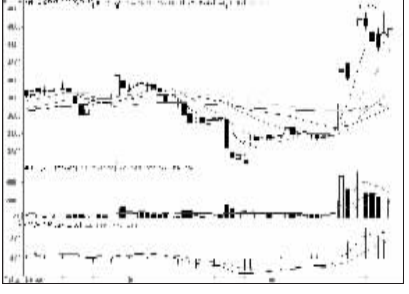
巨力索具 (002342):多头进场,近期跟入



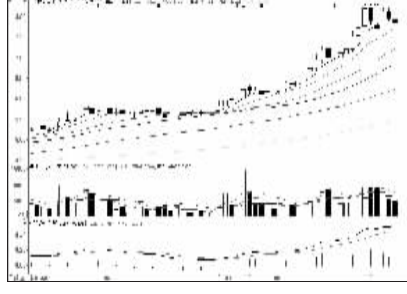
新华传媒 (600825):上攻能量不足,高抛



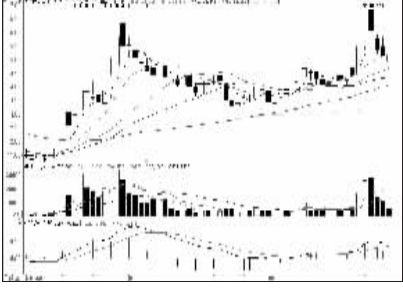
爱仕达 (002403):仍应看淡,出局为主



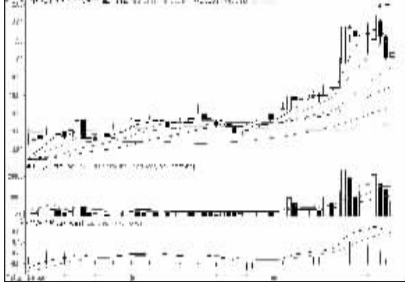
人民网 (603000):上扬格局,继续持有



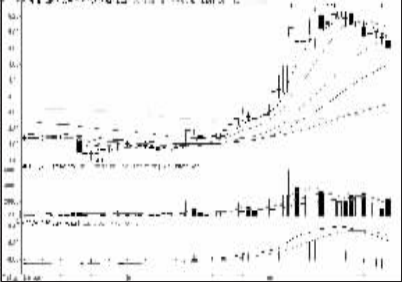
万泽股份 (600534):或继续回调,高抛



应流股份 (603308):上扬格局,逢低进场



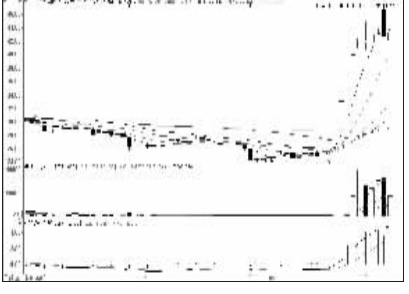
金自天正 (600560):多头行情可望维持



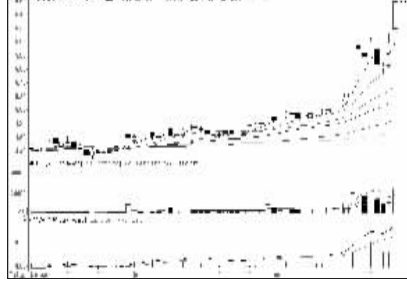
宝钢股份 (600010):短期走弱,减磅为主



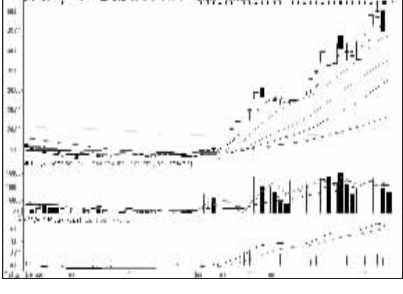
世联行 (002285):暂时多头格局,加仓



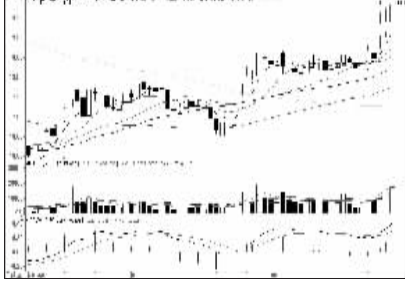
北斗星通 (002151):高位震荡,谨慎观望



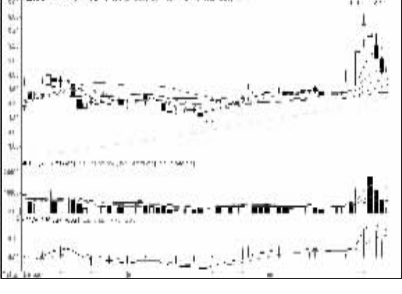
金马股份 (600980):谨防回调,不追涨



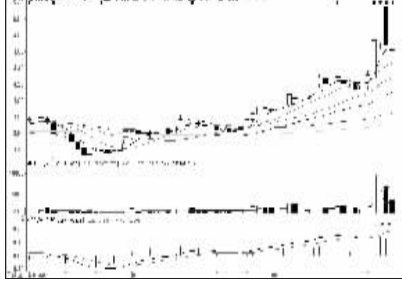
百圆裤业 (002640):上升趋势将维持,加仓



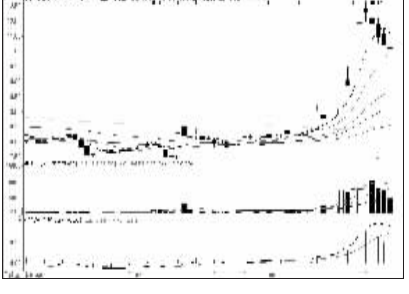
中海油服 (601808):多头市道,建议介入



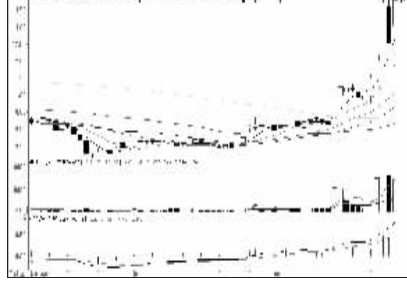
唐山港 (601000):中期有走好迹象,持有



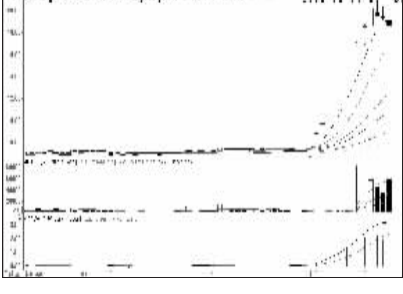
惠天热电 (600692):上行有阻力,高抛



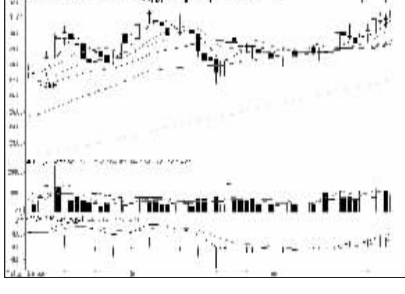
新华传媒 (600825):上攻能量不足,高抛



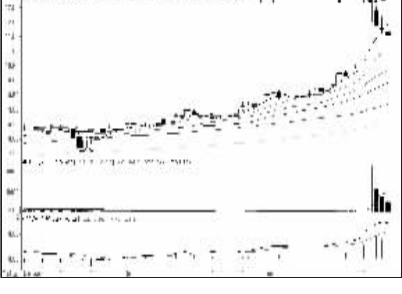
友阿股份 (002277):多头格局,介入为主



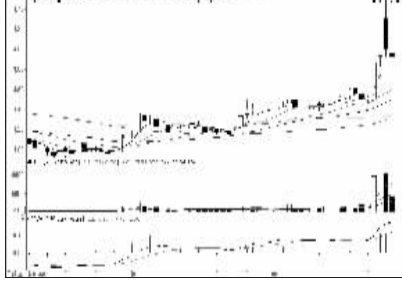
西南药业 (600666):止升回落,出货为主



恒生电子 (600570):继续看好,积极关注



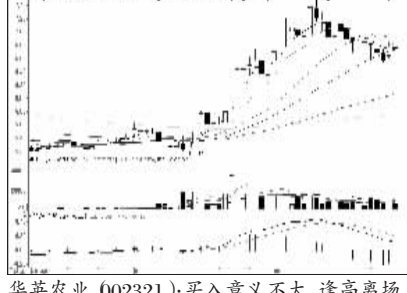
鑫科材料 (600255):上攻力度减弱,不跟



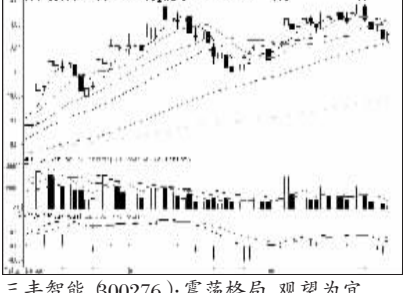
太阳纸业 (002078):上行有阻力,高抛



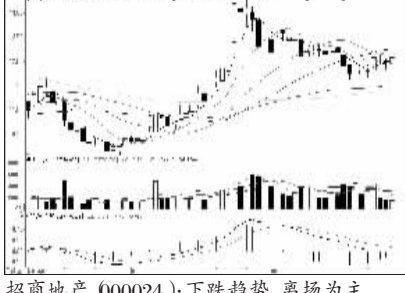
宁波热电 (600982):均线压制,后市谨慎



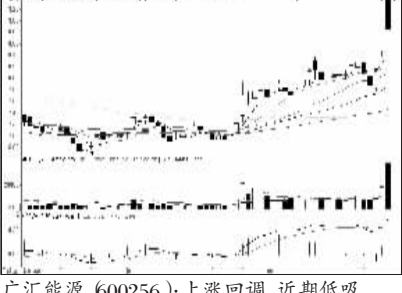
华英农业 (002321):买入意义不大,逢高离场



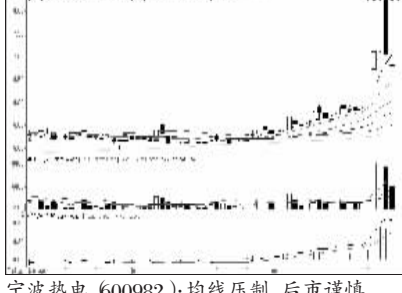
三丰智能 (600276):震荡格局,观望为宜



招商地产 (000024):下跌趋势,离场为主



广汇能源 (600256):上涨回调,近期低吸



宁波热电 (600982):均线压制,后市谨慎



看股票 买彩票  
全搞定  
大智慧手机版  
d.wapgw.cn