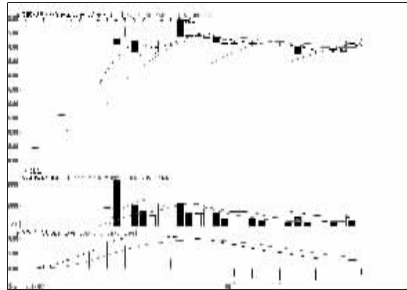


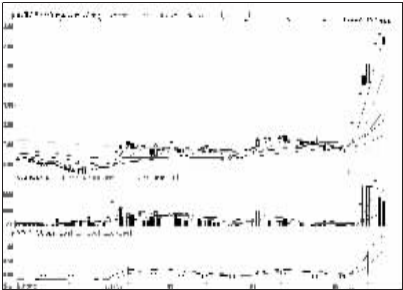
股东人数增减前10

股东人数减少前10



莎普爱思 (603168):空间有限,观望为主

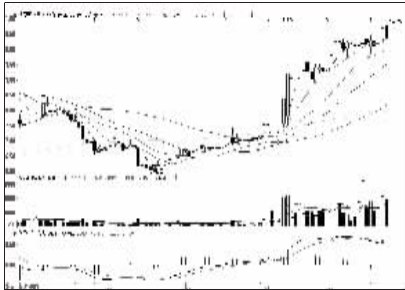
股东人数增加前10



赤峰黄金 (600988):累积升幅过大,离场

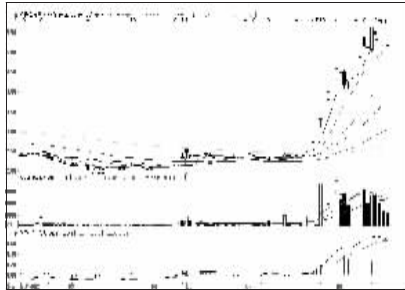
一周资金流入流出金额前10

资金流入金额前10



运盛实业 (600767):上升形态,择机介入

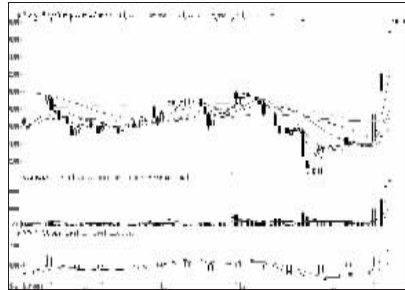
资金流出金额前10



永泰能源 (600157):回调压力增大,观望

周成交金额

成交突增前10

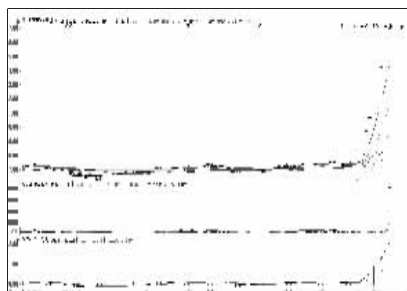


人民网 (603000):短线需要整固,观望

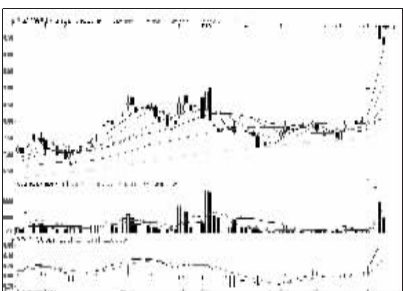
成交金额前8



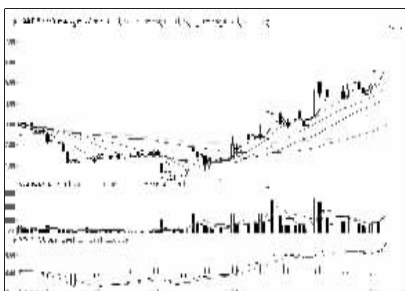
浙报传媒 (600633):回调压力增大,观望



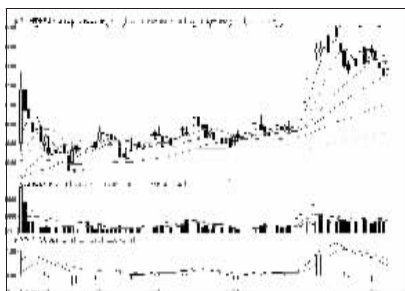
西南药业 (600666):高位放量,不宜追涨



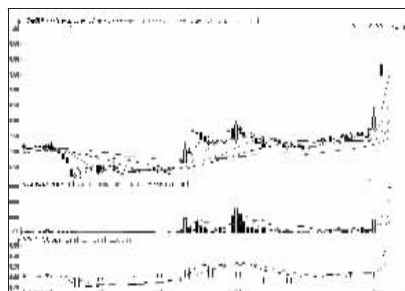
龙生股份 (602625):调整趋势,离场观望



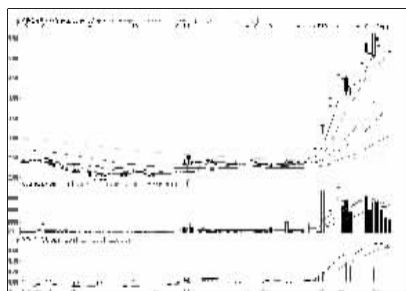
中航重机 (600765):强势拉升,暂不追涨



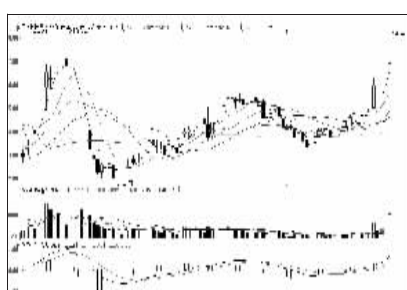
中国平安 (601318):仍需整固,暂时回避



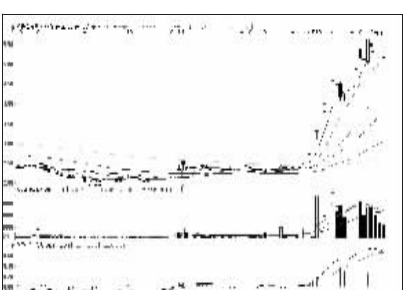
出版传媒 (601999):强势格局,择机介入



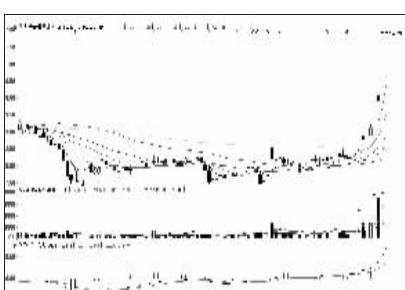
永泰能源 (600157):回调压力增大,观望



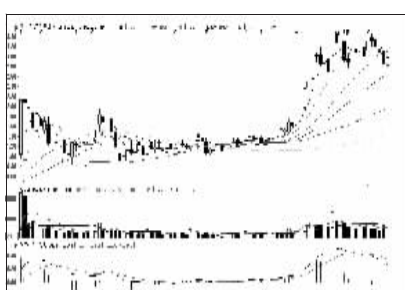
荣科科技 (800290):强势上攻,回调关注



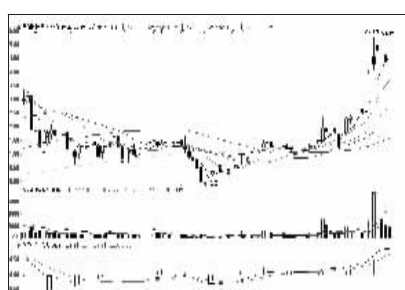
永泰能源 (600157):回调压力增大,观望



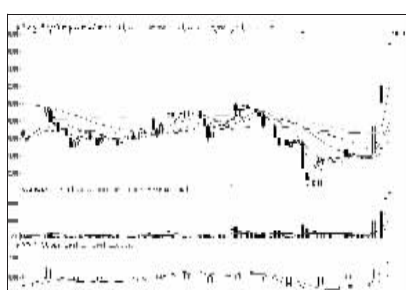
新华传媒 (600825):需要整固,等待回调



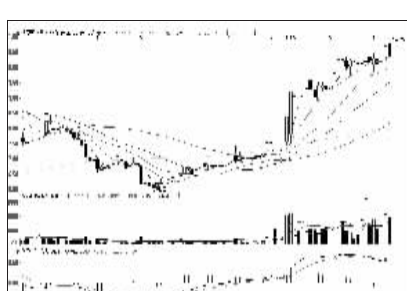
中信证券 (600030):震荡盘整,观望为主



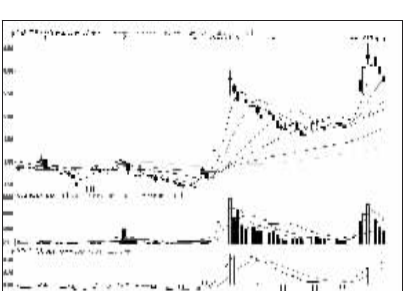
万润科技 (002654):需要整固,减仓观望



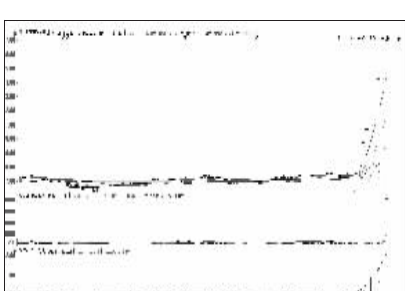
人民网 (603000):短线需要整固,观望



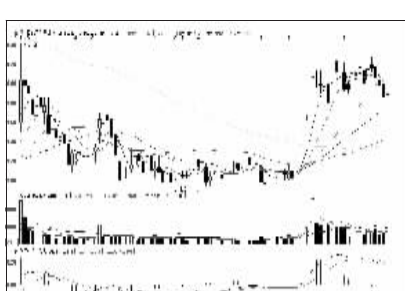
运盛实业 (600767):上攻形态,择机介入



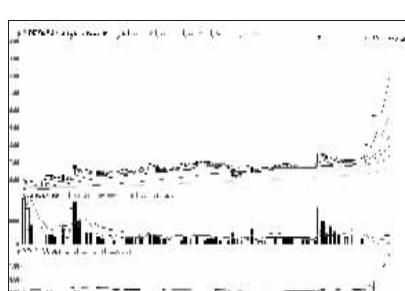
华塑控股 (000509):量能萎缩,离场观望



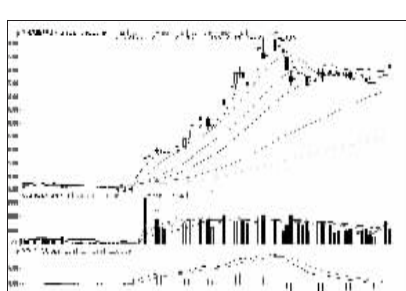
西南药业 (600666):高位放量,不宜追涨



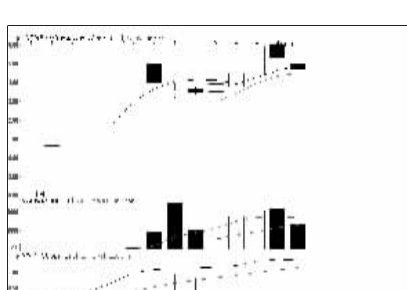
海通证券 (600837):仍需整固,回避为宜



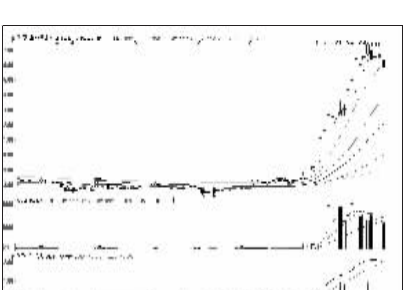
松辽汽车 (600715):一字涨停,持股观望



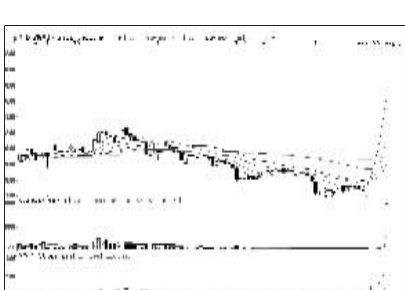
成飞集成 (002190):高位调整,择机离场



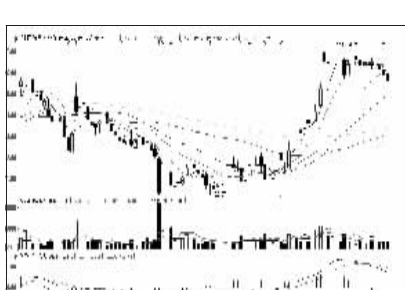
川仪股份 (603100):新股整固,观望为主



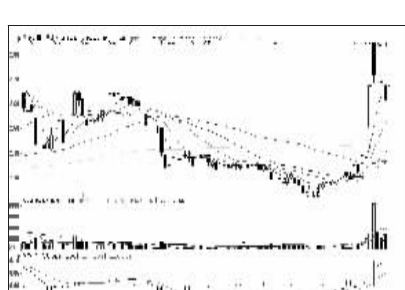
盛屯矿业 (600711):走势趋弱,出局观望



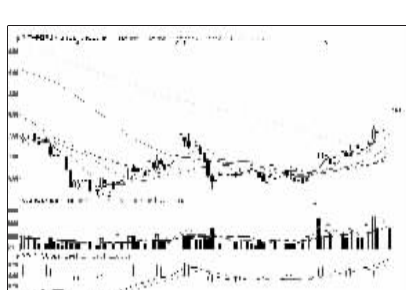
北斗星通 (002151):有回调需求,暂观望



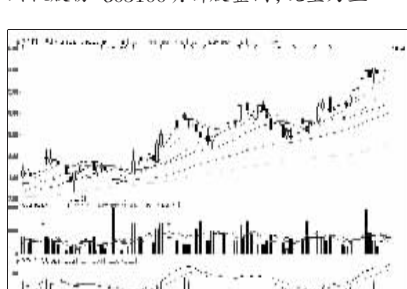
伊利股份 (600887):走势趋弱,减仓观望



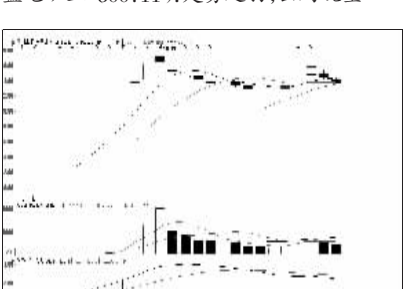
TCL集团 (000100):仍需整固,暂时观望



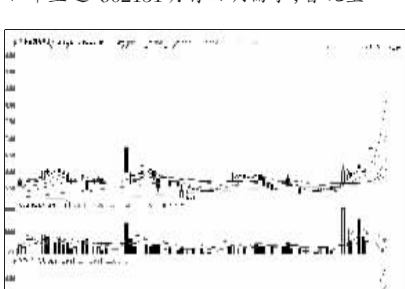
苏宁云商 (002024):有望走强,择机介入



欣旺达 (800207):形态良好,继续持股



北特科技 (603009):买盘不济,不宜介入



焦作万方 (000612):一字涨停,持股观望



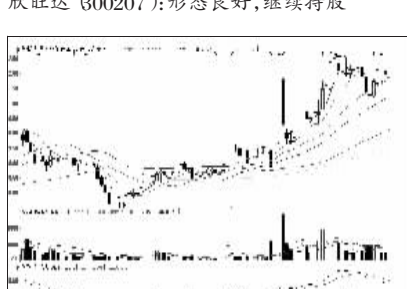
浦发银行 (600000):横盘震荡,观望为主



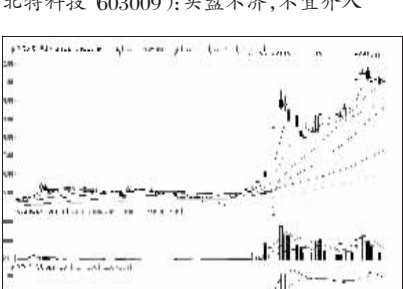
红星发展 (600367):强势格局,择机介入



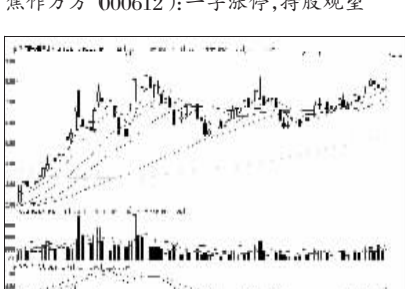
中国平安 (601318):仍需整固,暂时回避



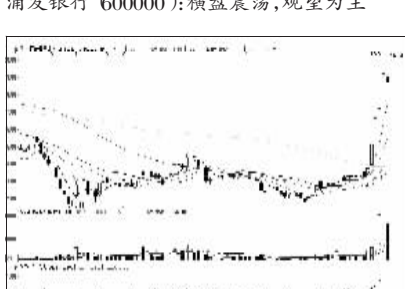
乐凯胶片 (600135):多头格局,看高一线



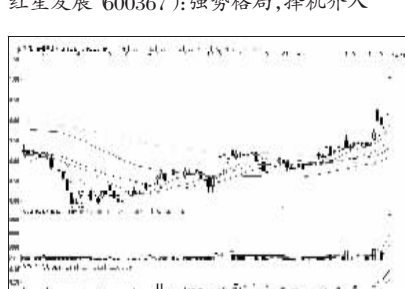
盈方微 (000670):震荡向上,逢低介入



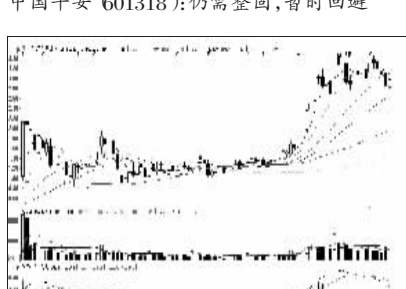
四维图新 (002405):或需回调,不宜追涨



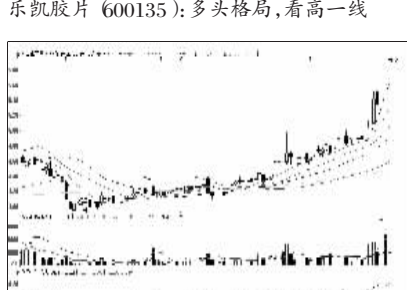
浙报传媒 (600633):回调压力增大,观望



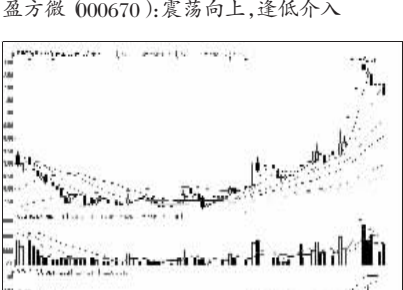
凤凰传媒 (601928):强势格局,择机介入



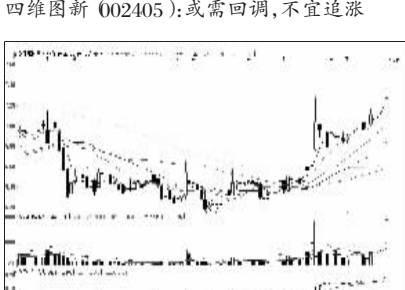
中信证券 (600030):震荡盘整,观望为主



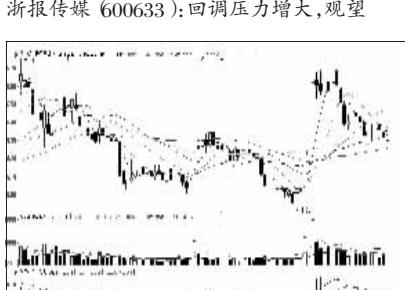
龙星化工 (002442):均线向上,适当介入



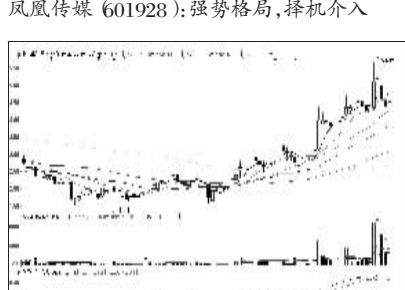
凌云股份 (600480):仍需整固,暂时回避



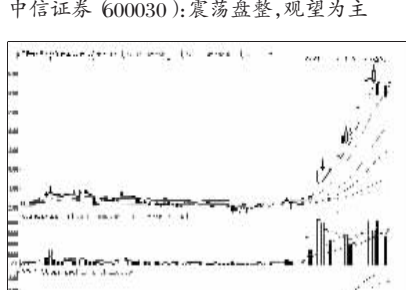
张江高科 (600895):均线向上,持股为主



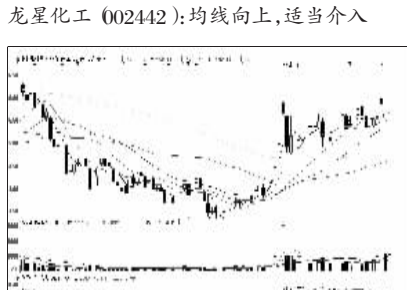
民生银行 (600016):窄幅整理,观望为主



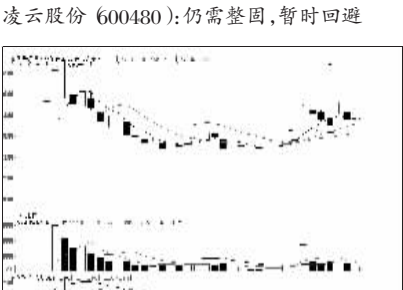
利尔化学 (002258):上升形态,择机介入



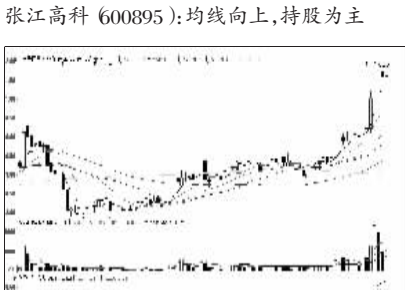
深天马A (000050):强势整固,继续持股



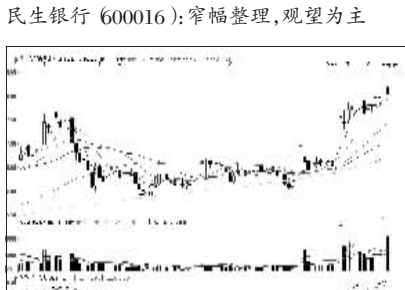
北新建材 (000786):有望突破年线,持股



依顿电子 (603328):多头格局,看高一线



金自天正 (600560):向上突破,适度跟进



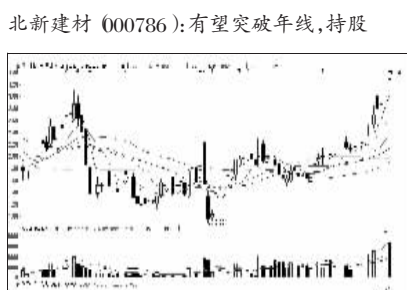
中储股份 (600787):仍需整固,回避为宜



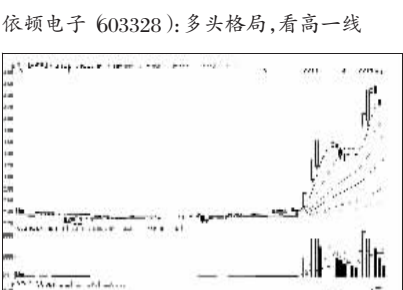
吉林高速 (601518):强势整理,看高一线



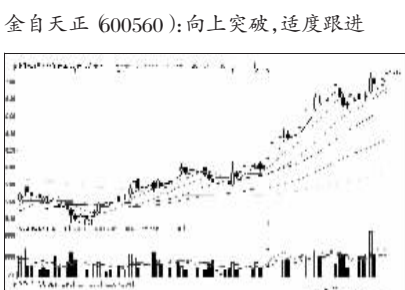
深华新 (000010):有望走强,择机介入



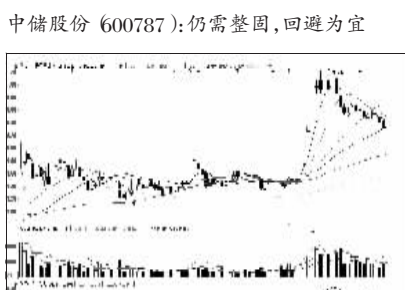
湖北广电 (000665):上有压力,观望为主



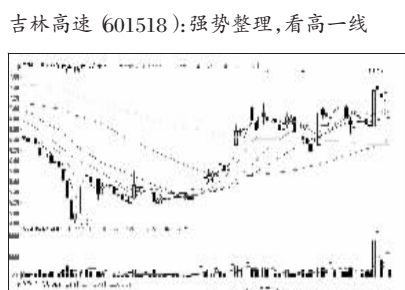
东北电气 (000585):仍需整固,离场观望



长江电力 (600900):上升形态,择机介入



兴业银行 (601166):尚未企稳,观望为宜



深华新 (000010):有望走强,择机介入

