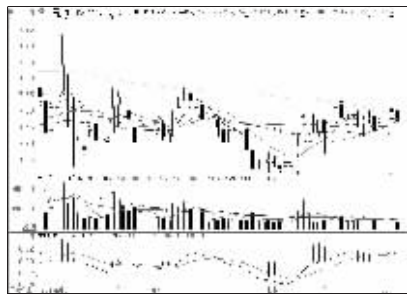


## 沪深10大权重股

沪市10大权重



中国石油(601857):横盘震荡,暂宜回避

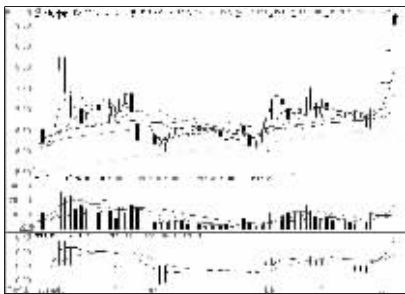
深市10大权重



平安银行(000001):弱势格局,观望

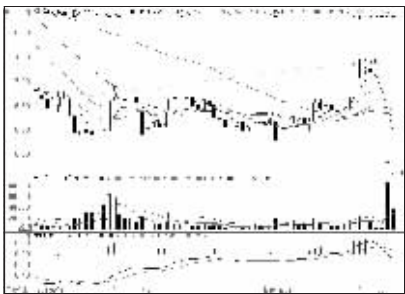
## 周涨跌幅前10

涨幅前10



阳谷华泰(800121):冲高回落,逢高减仓

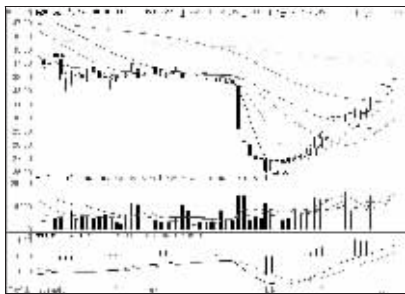
跌幅前10



华天酒店(000428):静待企稳,仍有上攻

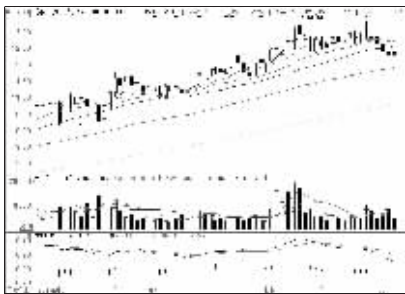
## 连续涨跌前10

连涨前10

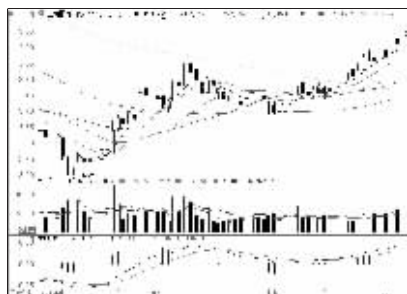


南大光电(800346):上行通道中,继续持有

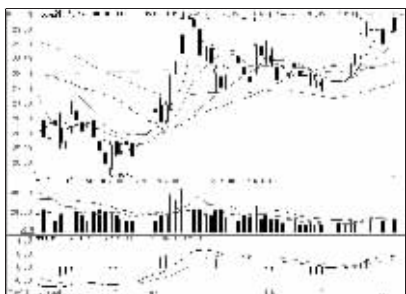
连跌前10



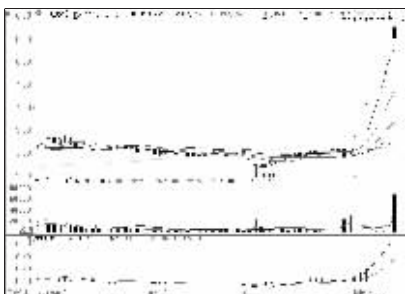
东阳光科(600673):持续回调,暂宜回避



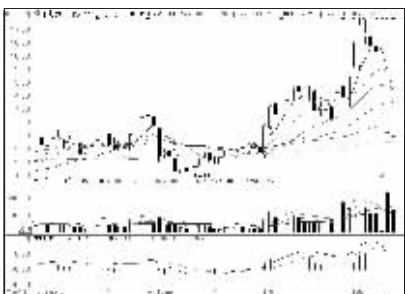
工商银行(601398):冲高回落,逢高减仓



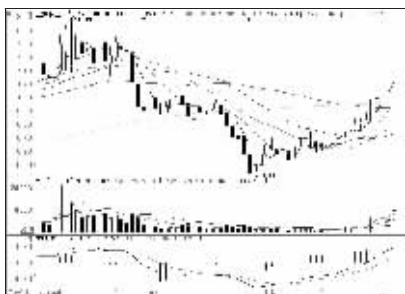
格力电器(000651):短线反弹或延续



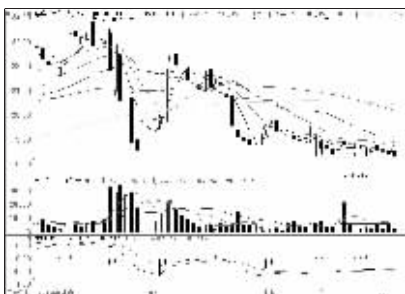
中达股份(600074):高位回调,落袋为安



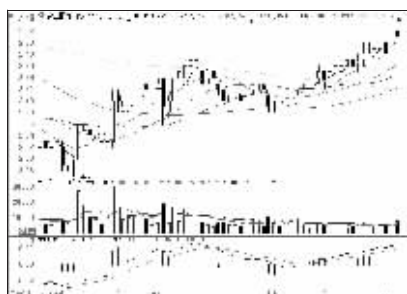
多氟多(002407):静待企稳,或有上攻



三变科技(002112):上涨势能弱化



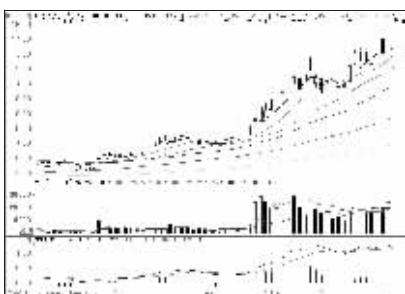
联华合纤(600617):弱势格局,观望



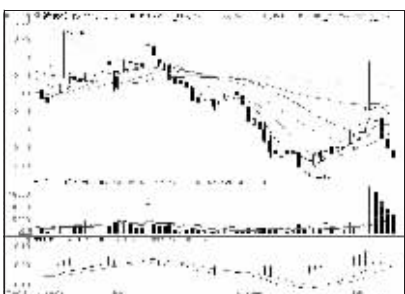
农业银行(601288):冲高回落,逢高减仓



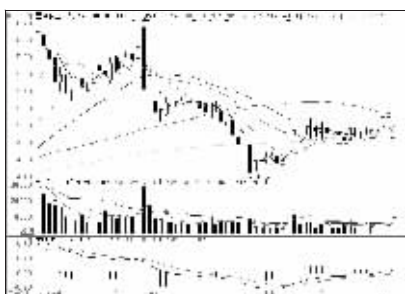
万科A(000002):短线或有回调



山水文化(600234):强势格局,持股观望



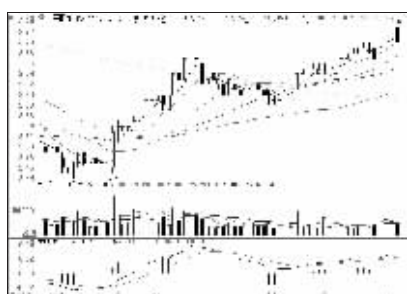
新钢股份(600782):持续回调,暂宜回避



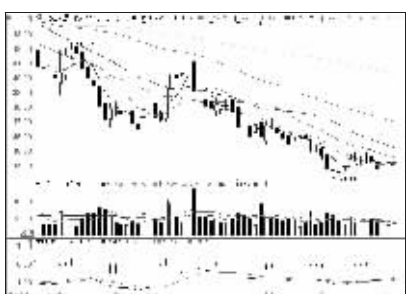
星湖科技(600866):强势格局,持股观望



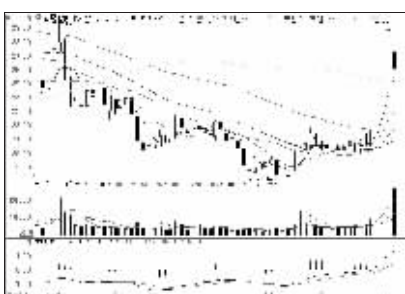
多氟多(002407):静待企稳,或有上攻



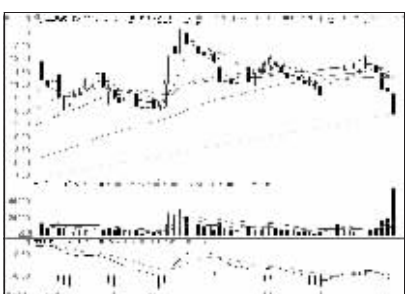
中国银行(601988):高位回调,落袋为安



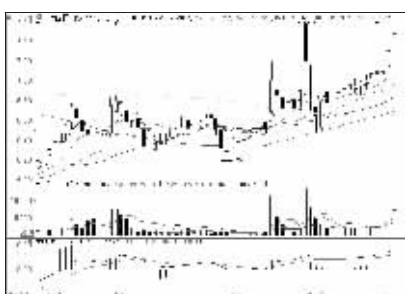
双汇发展(000895):低位整理格局延续



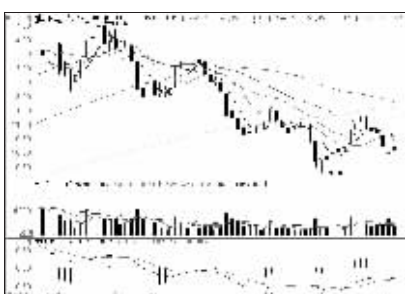
潜能恒信(800191):短线或继续回调



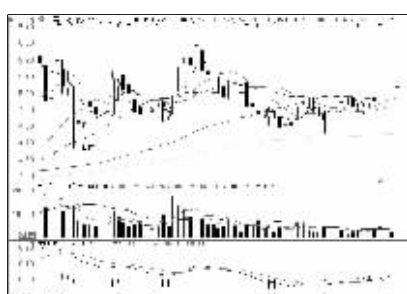
嘉应制药(002198):上方压力大



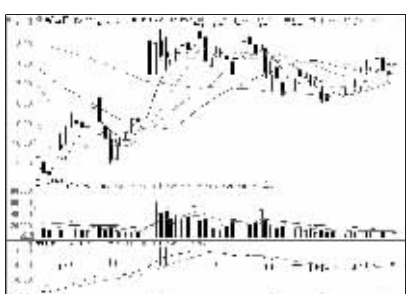
东百集团(600693):短期谨防回调



爱康科技(002610):下行通道中,不宜介入



中国石化(600028):横盘整理概率大



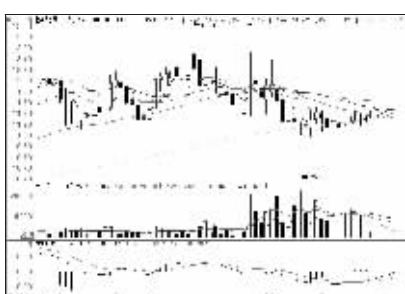
美的集团(000333):温和上扬或延续



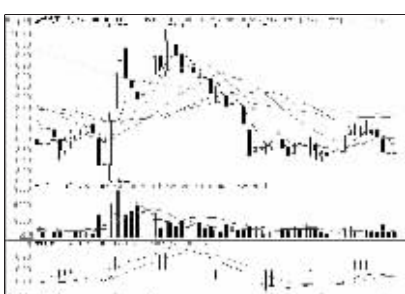
长园集团(600525):下方空间不大



天龙光电(800029):低位震荡或延续



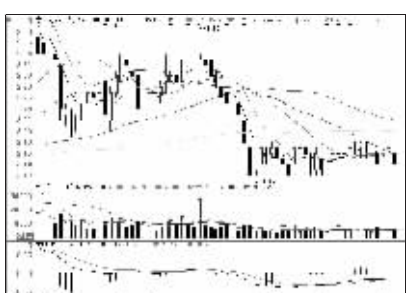
铁岭新城(000809):量能萎缩,谨防回调



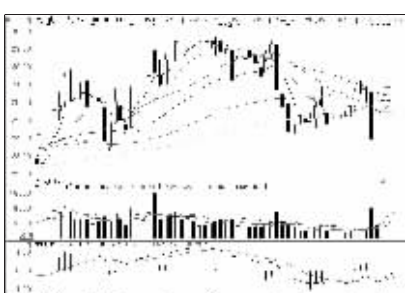
泰禾集团(000732):弱势格局,回避



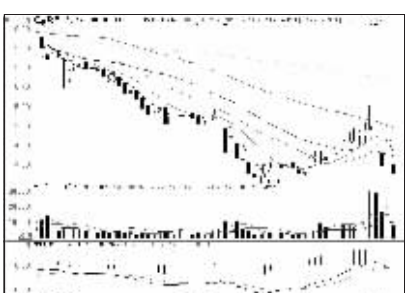
中国人寿(601628):短期受压



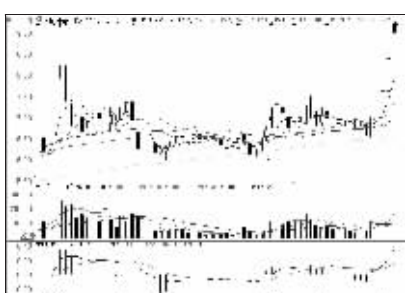
京东方A(000725):横盘整理或延续



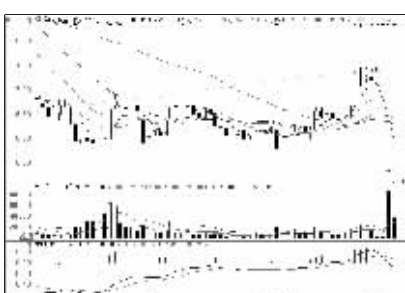
新文化(800336):上涨势能弱化



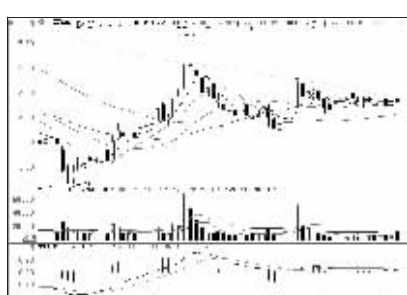
通宝能源(600780):跌幅已大,观望为宜



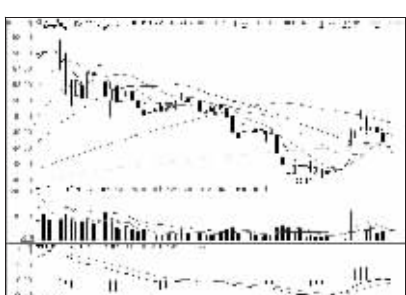
阳谷华泰(800121):冲高回落,暂宜观望



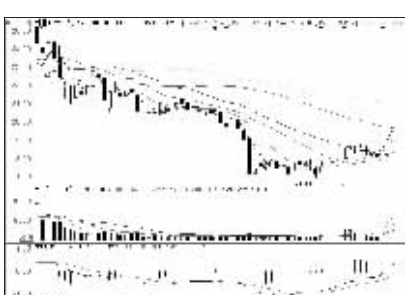
华天酒店(000428):静待企稳,仍有上攻



中国神华(600088):窄幅震荡概率大



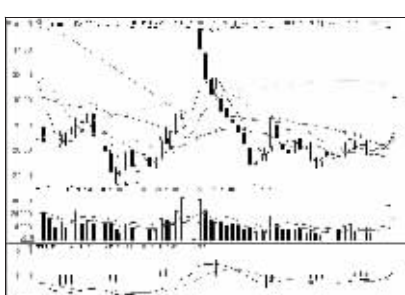
比亚迪(002594):短线或有反弹



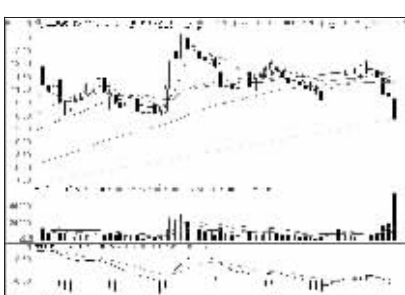
科林环保(002499):短线仍或上攻



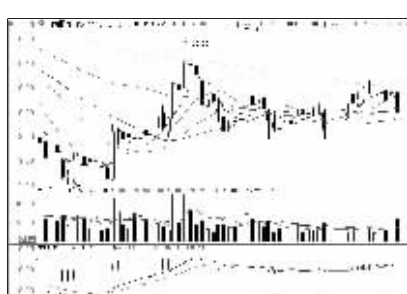
上海钢联(800226):弱势格局,回避



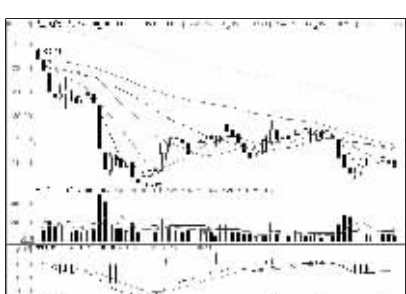
中青宝(800052):放量冲高,或有反复



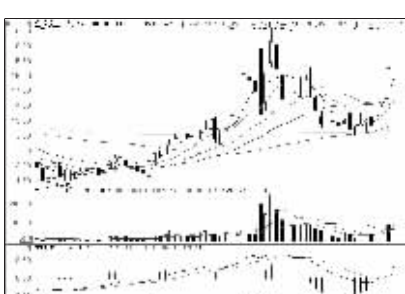
嘉应制药(002198):上方压力大



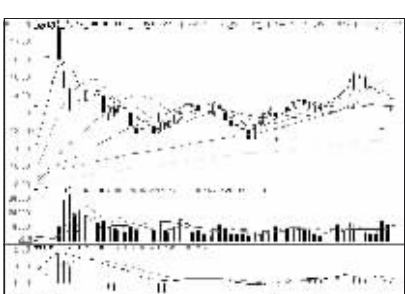
招商银行(600036):短线或有反弹



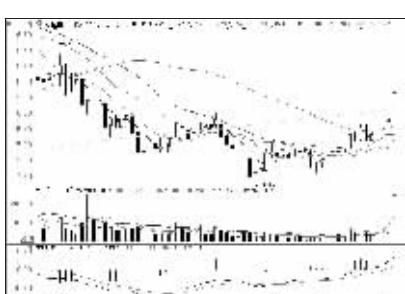
海康威视(002415):低位整理格局延续



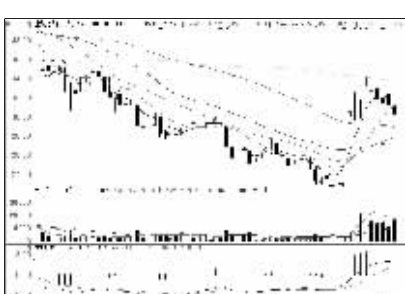
皇氏乳业(002329):短线谨防回调



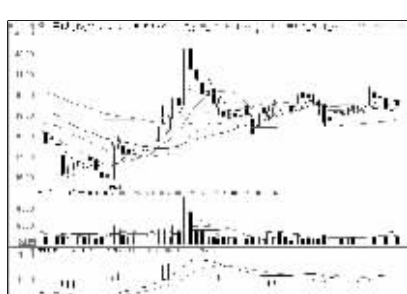
赛为智能(800044):或有技术性反弹



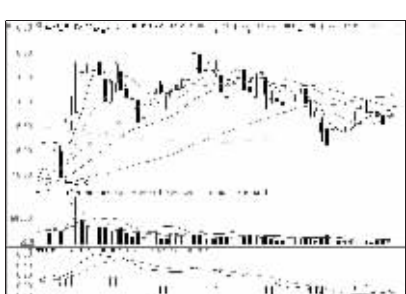
海伦哲(800201):上方空间收窄



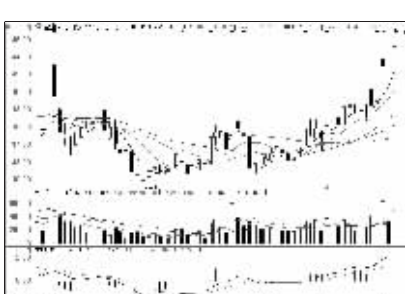
上海新阳(800236):短期仍将回调



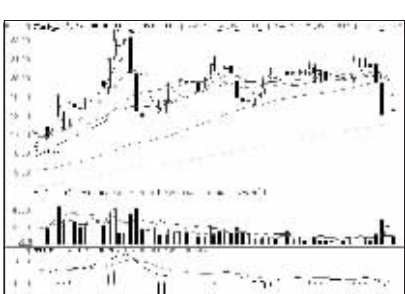
中国平安(601318):短线或维持震荡



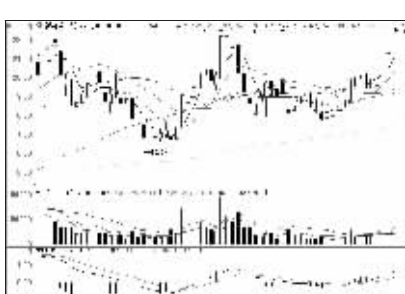
五粮液(000858):震荡上涨概率大



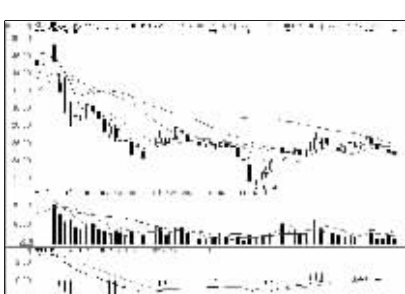
全通教育(800359):冲高回落,谨防回调



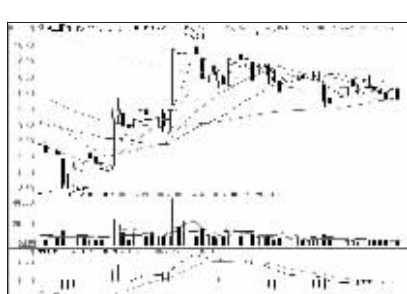
大立科技(002214):破位下行,回避



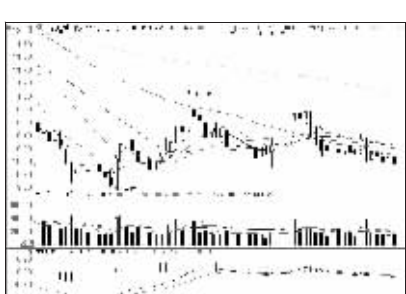
新南洋(600661):涨幅已大,不宜追高



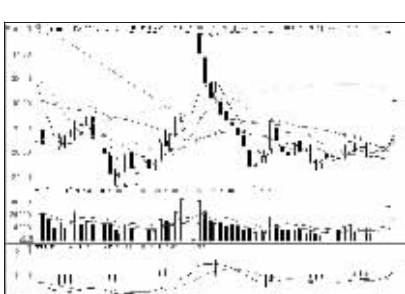
天赐材料(002709):破位下行,观望



兴业银行(601166):横盘整理或持续



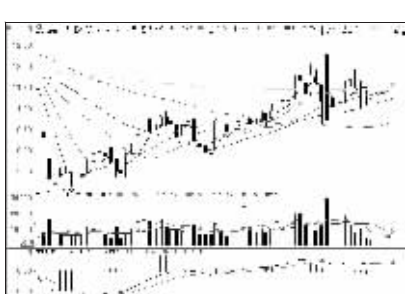
广发证券(000776):弱势格局,回避



中青宝(800052):放量冲高,或有反复



新赛股份(600540):持续回调,暂宜回避



天立环保(800156):炒作热烈,静观后市



深赤湾A(000022):弱势格局难改变