

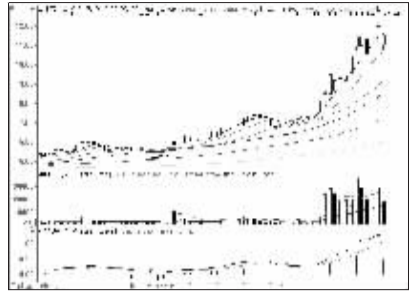
股东人数增减前10

股东人数减少前10



亚太科技 (002540): 区间震荡, 有望反弹

股东人数增加前10



山水文化 (600234): 短线或有震荡

一周资金流入流出金额前10

资金流入金额前10



北巴传媒 (600386): 接近前高, 或有反复

资金流出金额前10



国金证券 (600109): 仍有回调空间

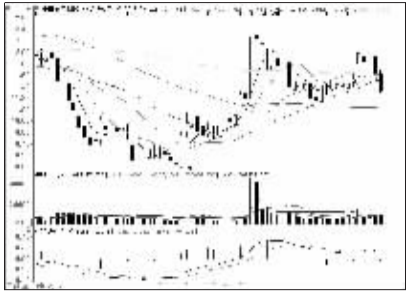
周成交金额

成交突增前10



兴业矿业 (000426): 短期或反复震荡

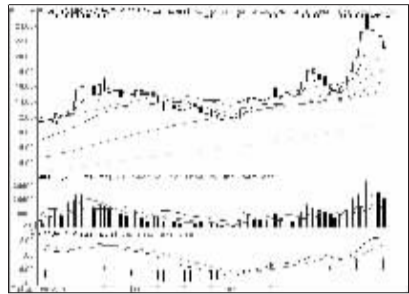
成交金额前8



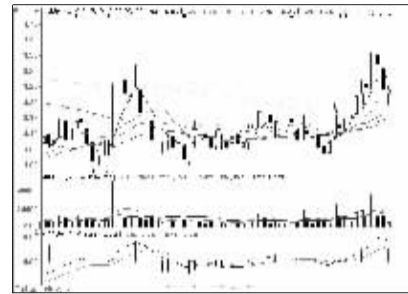
中信证券 (600030): 破位下行, 观望



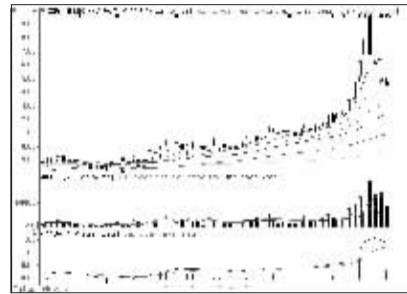
汇金股份 (800368): 高位回调, 落袋为安



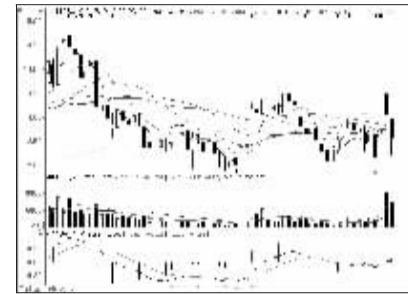
华泽钴镍 (000693): 镍价回落, 防范风险



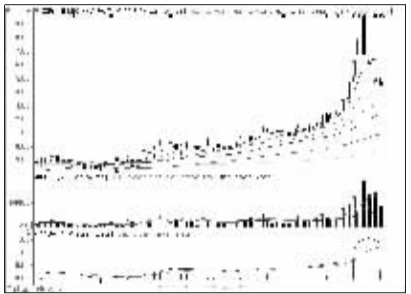
中国联通 (600050): 低位震荡, 观望



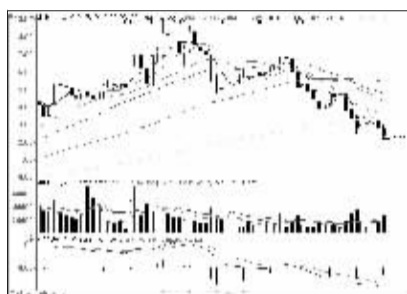
吉恩镍业 (600432): 短线或横盘震荡



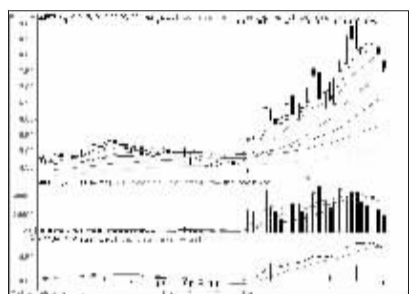
金河生物 (002688): 区间震荡, 观望



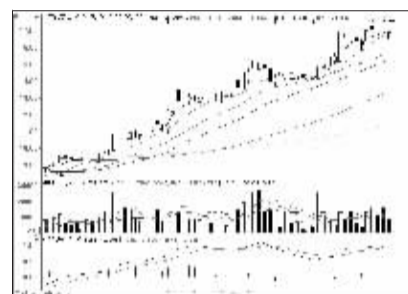
吉恩镍业 (600432): 短线或横盘震荡



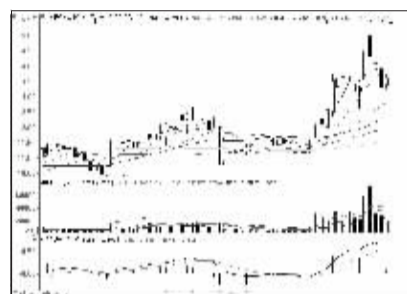
西陇化工 (002584): 弱势格局, 观望



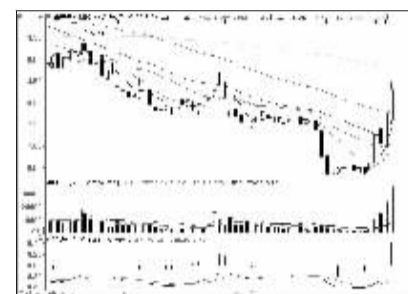
摩恩电气 (002451): 仍或回调, 短线观望



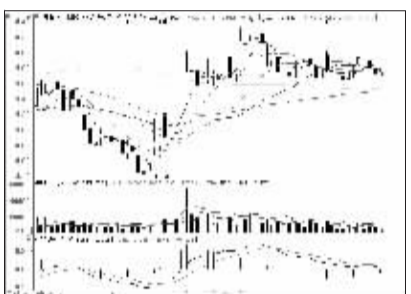
万向德农 (600371): 多头趋势, 持股待涨



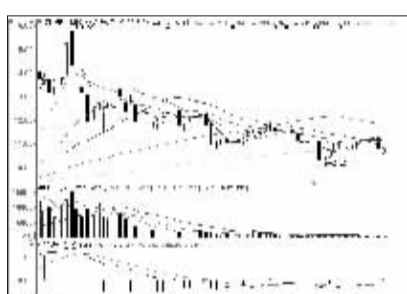
三爱富 (600636): 区间震荡概率大



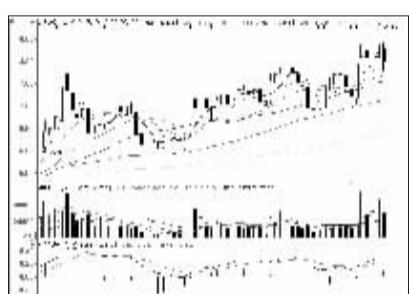
山东墨龙 (002490): 涨势未尽, 继续持有



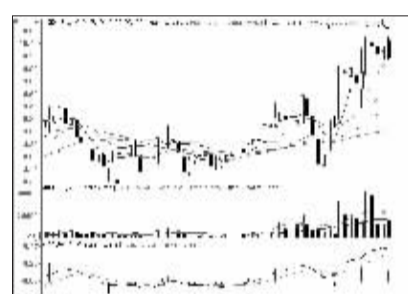
浦发银行 (600000): 横盘整理, 观望



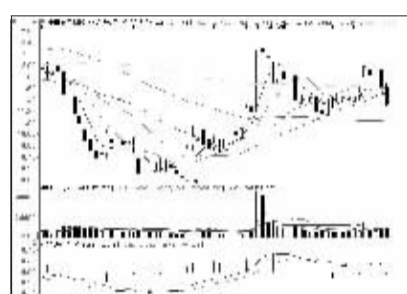
方正电机 (002196): 回调后或有反弹



天汽模 (002510): 仍有震荡上涨可能



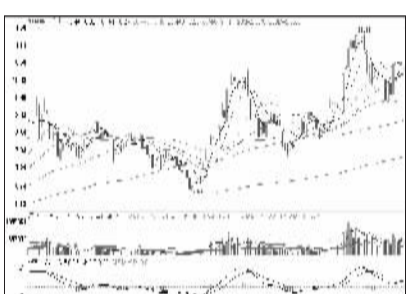
全柴动力 (600218): 有望突破前高



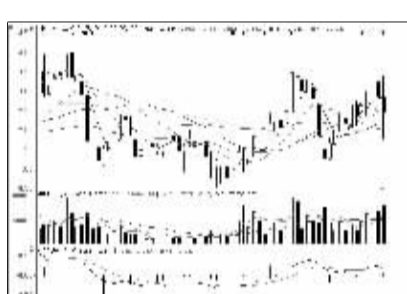
中信证券 (600030): 破位下行, 观望



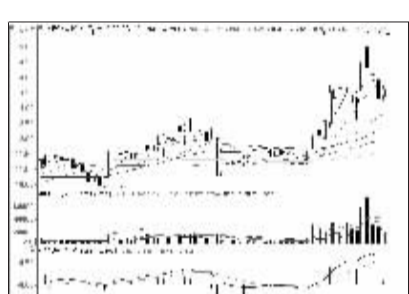
太钢不锈 (000825): 短线或有反抽



中体产业 (600158): 有望震荡上行



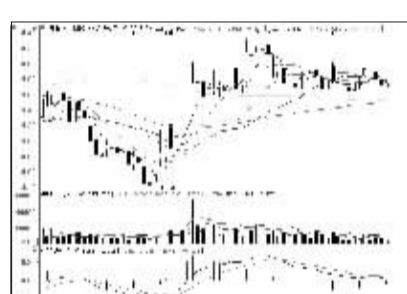
同花顺 (800033): 区间震荡, 观望



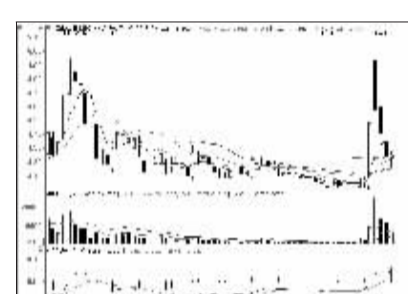
三爱富 (600636): 区间震荡概率大



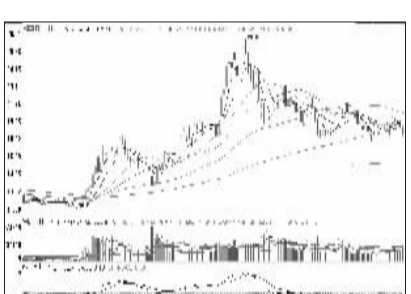
外高桥 (600648): 短线反弹有望持续



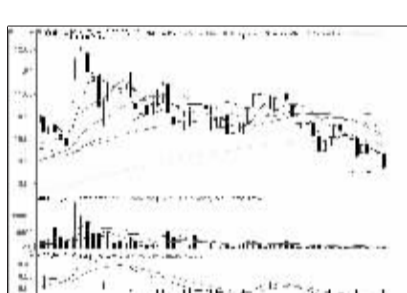
浦发银行 (600000): 横盘整理, 观望



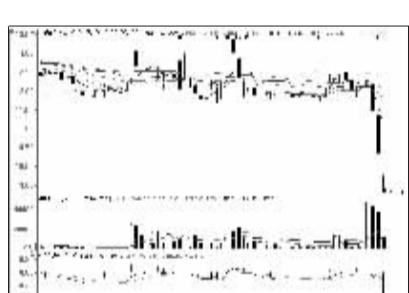
陕西煤业 (601225): 弱势格局, 观望



国金证券 (600109): 仍有回调空间



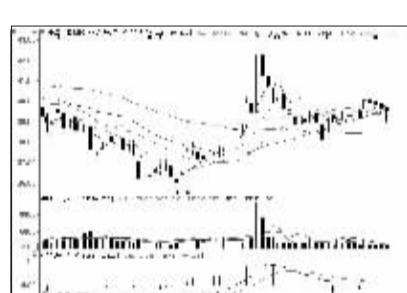
喜临门 (603008): 破位下行, 观望



中兴商业 (000715): 破位下行, 回避



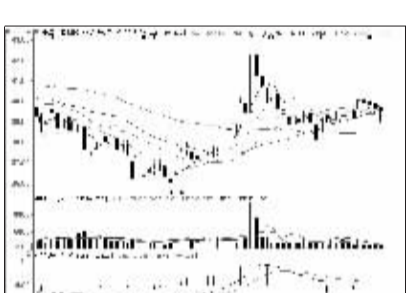
中航投资 (600705): 短线反弹或有反复



中国平安 (601318): 或延续横盘整理



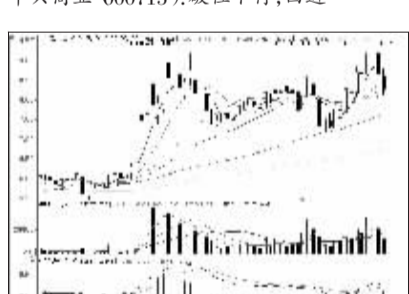
厦工股份 (600815): 仍有反弹可能



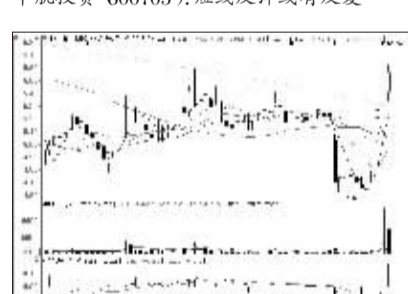
中国平安 (601318): 横盘整理或延续



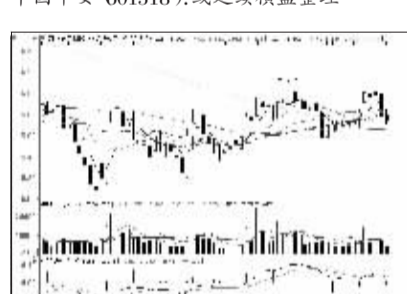
华贸物流 (603128): 短线有望延续反弹



中化岩土 (002542): 短线或横盘整理



巨化股份 (600160): 短线或横盘震荡



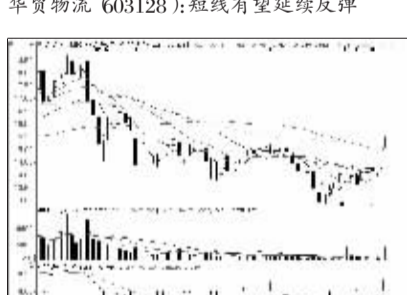
方正证券 (601901): 多空胶着, 观望



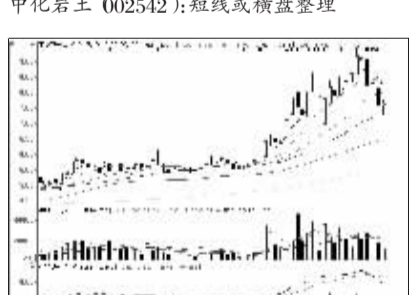
南宁糖业 (000911): 短线谨防回调



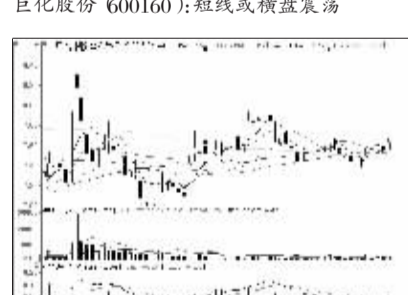
格林美 (002340): 区间震荡格局延续



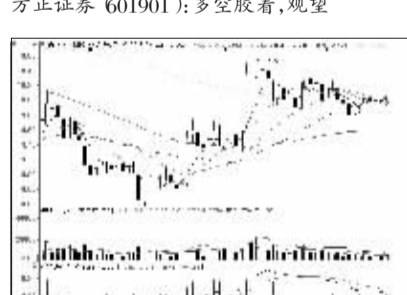
光韵达 (800227): 仍有反弹空间



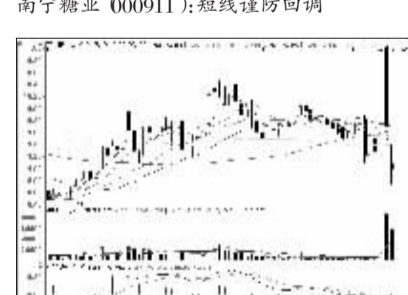
厦华电子 (600870): 高位回调, 获利了结



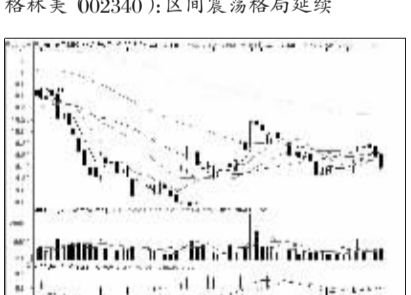
北京银行 (601169): 区间震荡格局, 观望



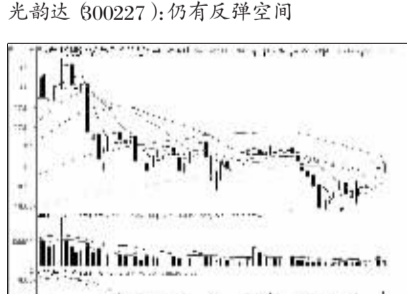
兴业银行 (601166): 区间震荡格局不改



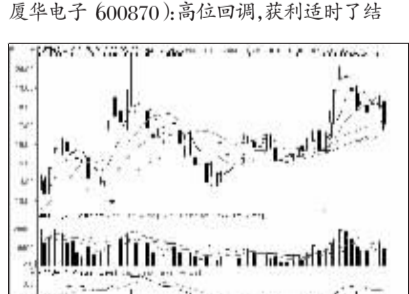
宝利来 (000008): 破位下行, 回避



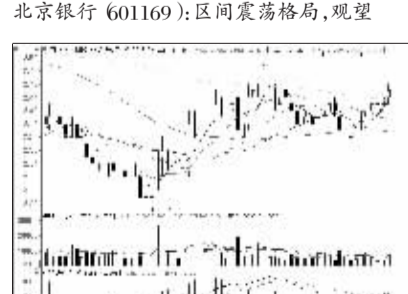
海通证券 (600837): 弱势格局, 回避



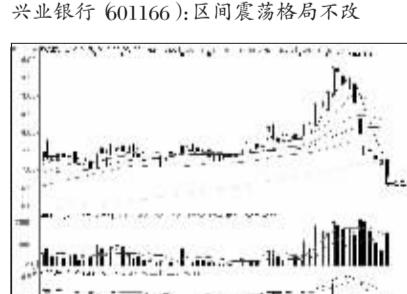
万润科技 (002654): 有望继续反弹



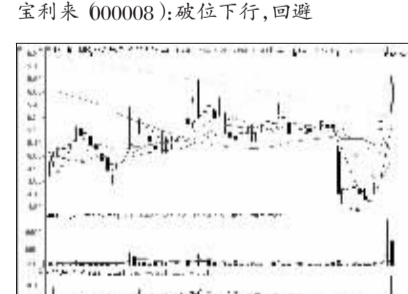
光洋股份 (002708): 弱势格局, 观望



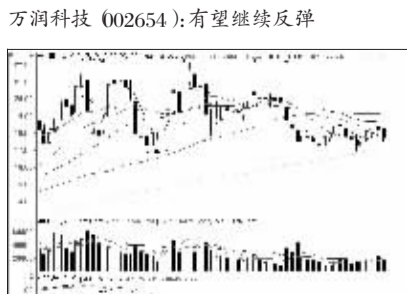
农业银行 (601288): 温和上扬, 继续持有



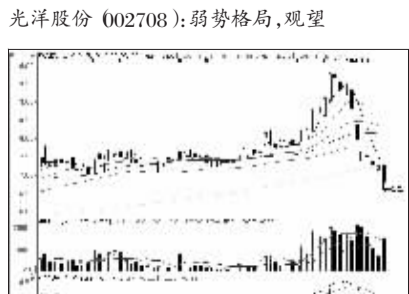
华芳纺织 (600273): 跌势加速, 出局



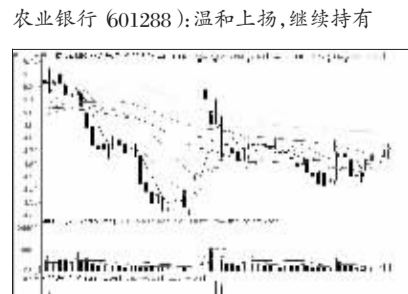
巨化股份 (600160): 短线震荡, 观望



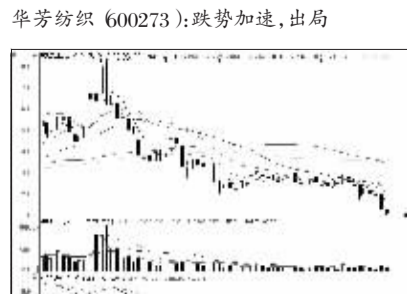
海兰信 (800065): 区间震荡格局, 观望



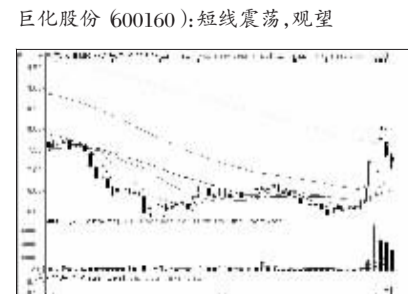
华芳纺织 (600273): 跌势加速, 出局观望



上港集团 (600018): 反弹有望延续



东软集团 (600718): 弱势格局, 回避



兖州煤业 (600188): 或延续区间震荡格局



看股票 买彩票 全搞定 大智慧手机版 d.wapgw.cn