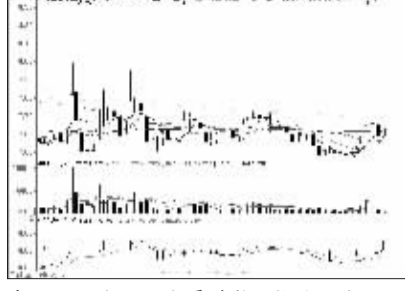


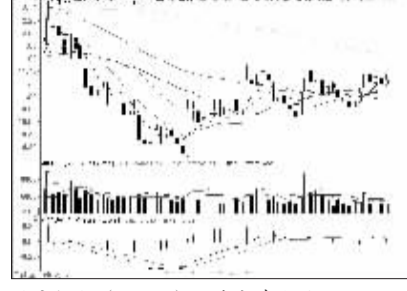
沪深10大权重股

沪市10大权重



中国石油 (601857): 震荡整理格局延续

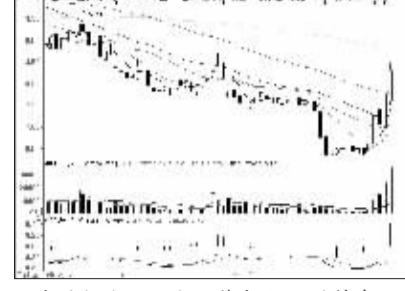
深市10大权重



平安银行 (000001): 短线或有上攻

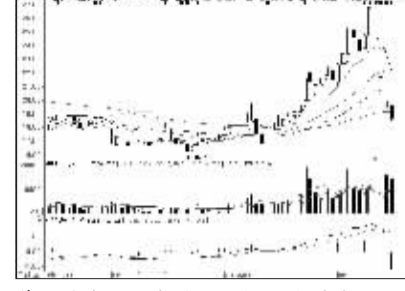
周涨跌幅前10

涨幅前10



山东墨龙 (002490): 涨势未尽, 继续持有

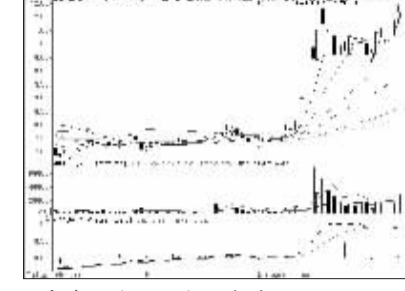
跌幅前10



荣之联 (002642): 破位下行, 观望为宜

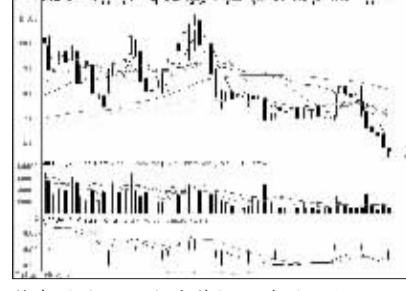
连续涨跌前10

连涨前10

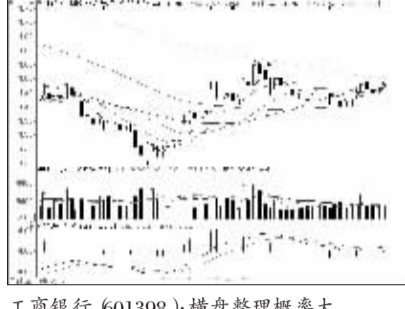


西部资源 (600139): 短线谨防回调

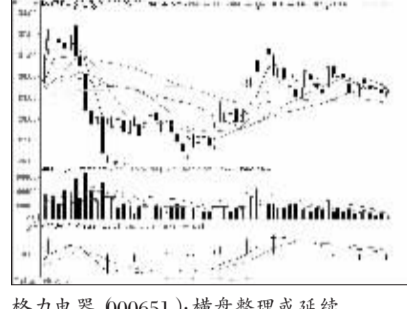
连跌前10



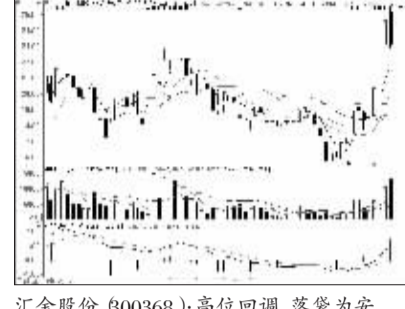
梅泰诺 (600038): 走势较弱, 暂宜观望



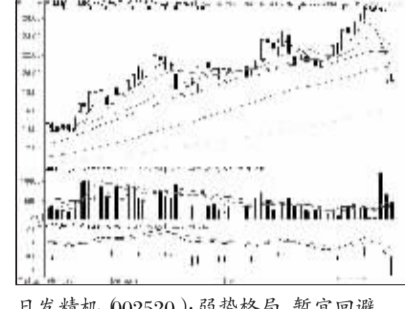
工商银行 (601398): 横盘整理概率大



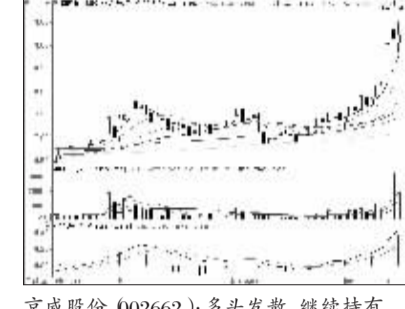
格力电器 (000651): 横盘整理或延续



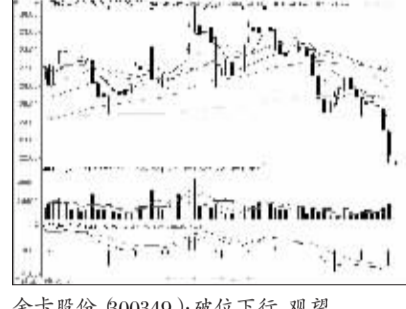
汇金股份 (800368): 高位回调, 落袋为安



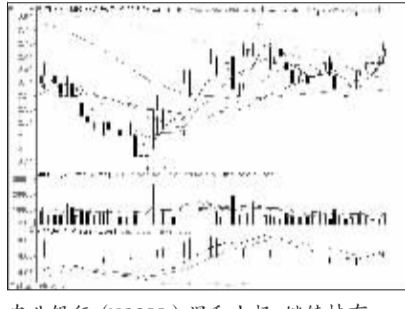
日发精机 (002520): 弱势格局, 暂宜回避



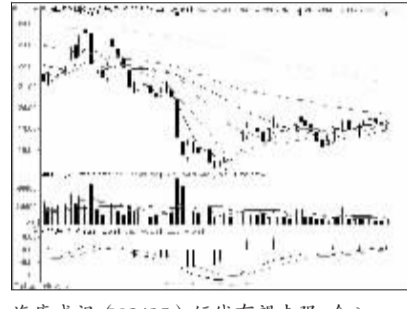
京威股份 (002662): 多头发散, 继续持有



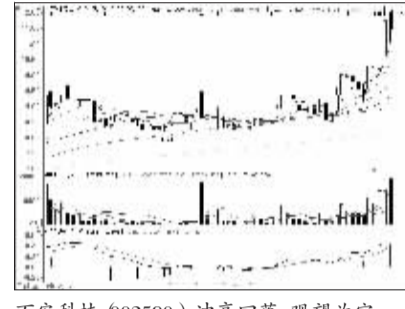
金卡股份 (600349): 破位下行, 观望



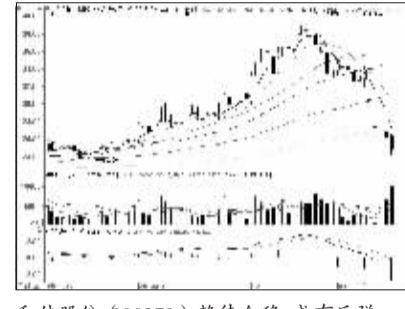
农业银行 (601288): 温和上扬, 继续持有



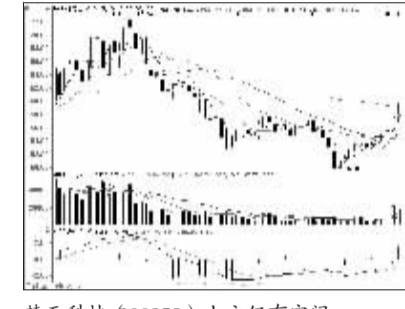
海康威视 (002415): 短线有望走强, 介入



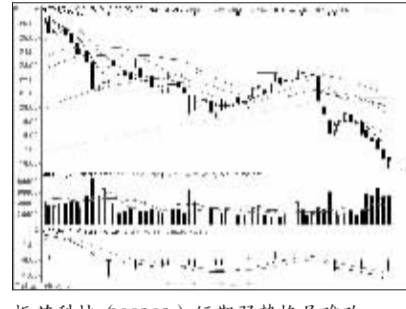
万安科技 (002590): 冲高回落, 观望为宜



和佳股份 (600273): 静待企稳, 或有反弹



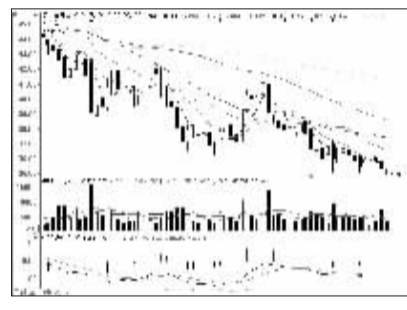
楚天科技 (600358): 上方仍有空间



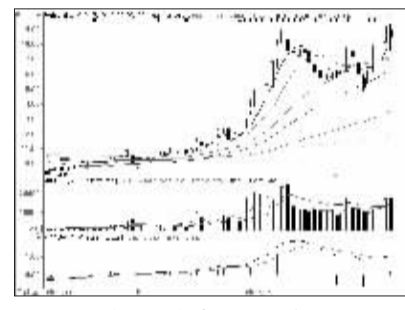
振芯科技 (600101): 短期弱势格局难改



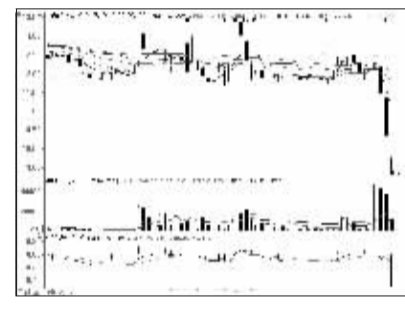
中国银行 (601988): 温和上行概率大



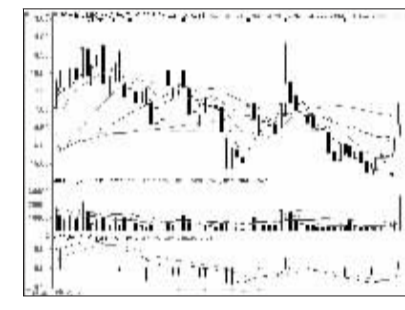
双汇发展 (000895): 低位整理格局延续



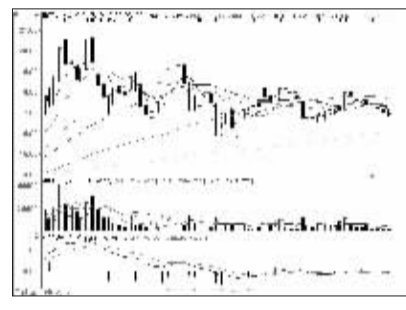
千山药机 (800216): 高位整理, 暂宜观望



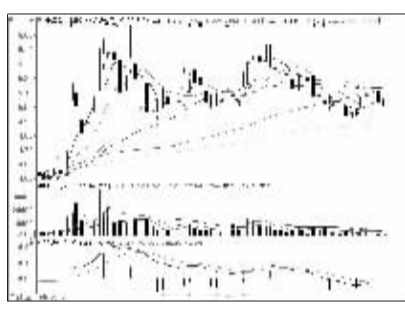
中兴商业 (000715): 破位下行, 回避



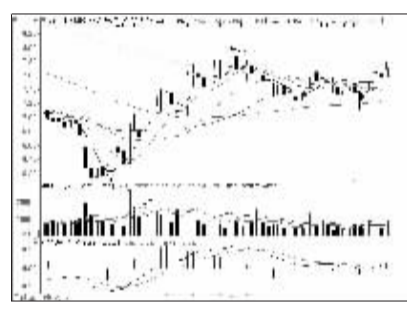
渤海股份 (000605): 上涨势能弱化



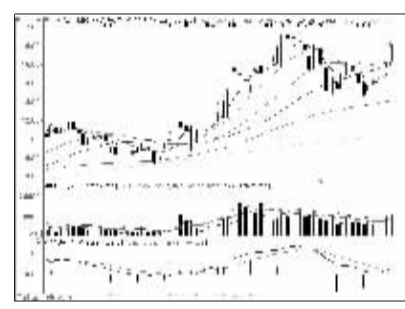
福安药业 (600194): 下行压力未尽



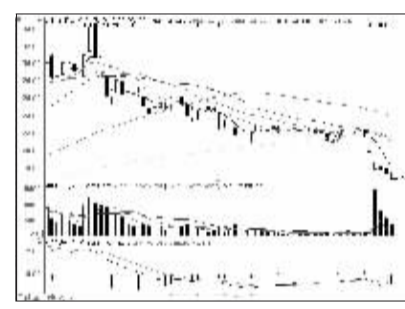
中国石化 (600028): 短线或震荡回调



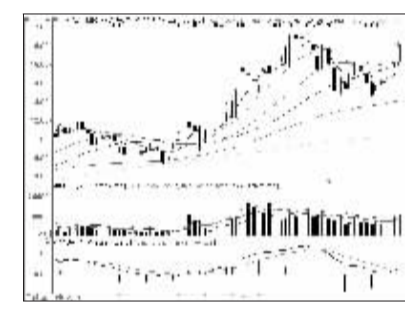
万科A (000002): 短线或反复, 观望



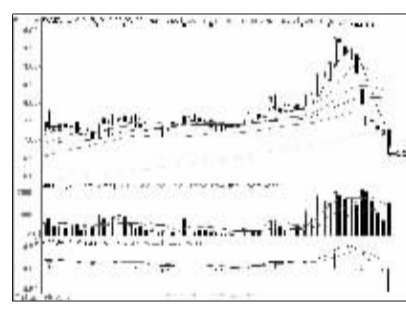
利亚德 (800296): 上行通道中, 继续持有



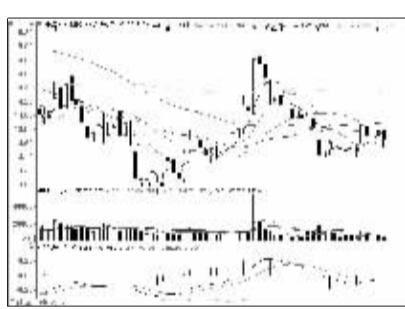
天瑞仪器 (600165): 静待企稳, 或有反弹



利亚德 (800296): 短期仍或上攻



华芳纺织 (600273): 跌势加速, 出局观望



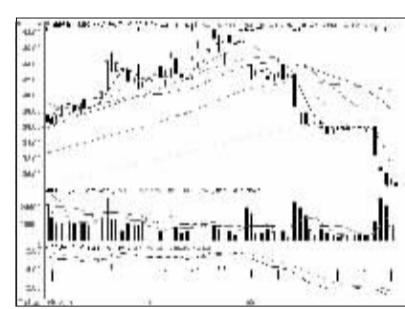
中国人寿 (601628): 震荡整理格局延续



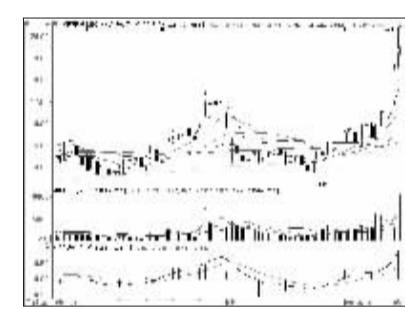
京东方A (000725): 下行态势或延续



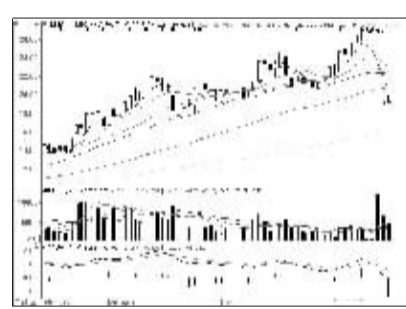
南宁糖业 (000911): 短线谨防回调



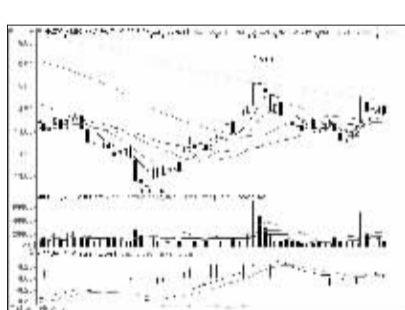
南风股份 (600004): 破位下行, 暂宜观望



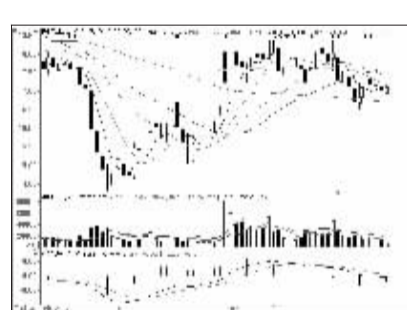
汉成电子 (600007): 冲高回落, 暂宜观望



日发精机 (002520): 弱势格局, 暂宜回避



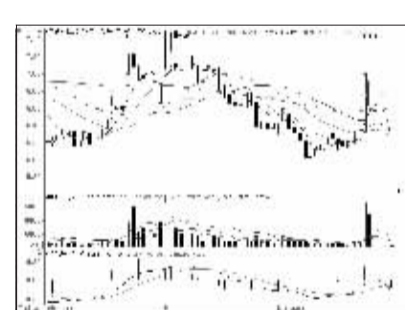
中国神华 (601088): 短线或横盘整理



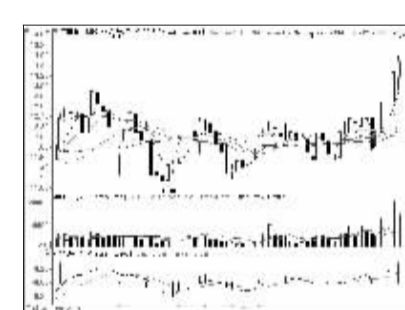
美的集团 (000333): 价量配合不佳, 观望



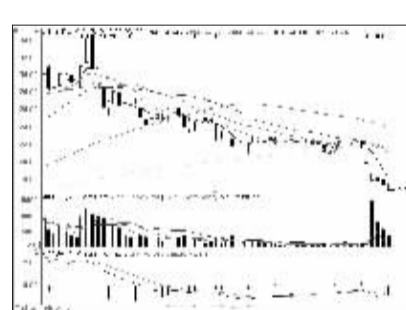
美晨科技 (600237): 冲高回落, 谨防回调



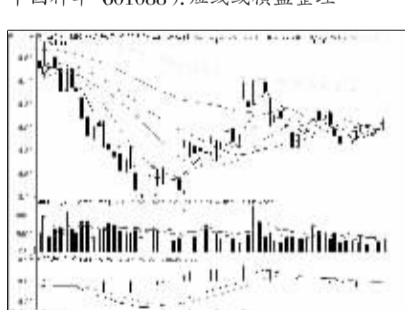
*ST新业 (600075): 抛压沉重, 观望



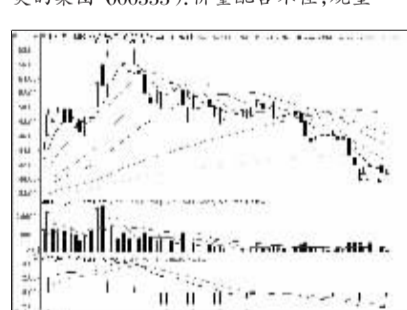
贵航股份 (600523): 强势格局, 继续持有



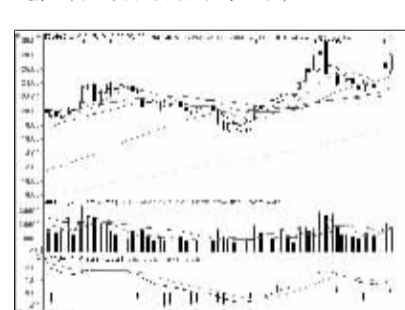
天瑞仪器 (600165): 静待企稳, 或有反弹



招商银行 (600036): 上方压力大



比亚迪 (002594): 下行趋势或延续



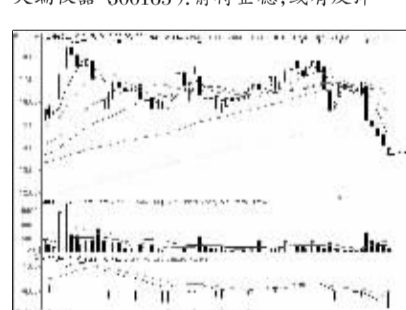
威华股份 (002240): 均线支撑力度强



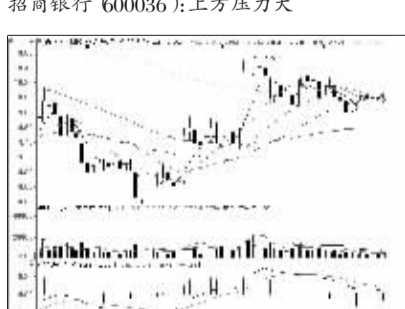
万邦达 (600055): 底部未到, 静观后市



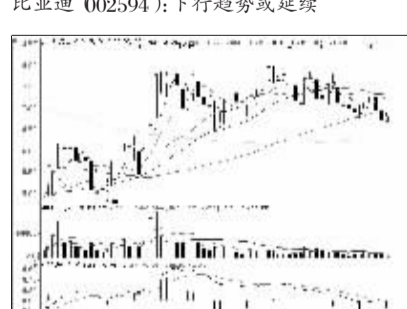
合众思壮 (602383): 短线谨防回调



风范股份 (601700): 跌势放缓, 观望为宜



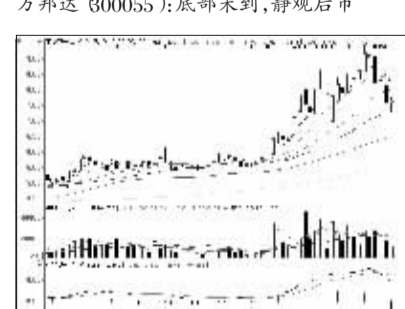
兴业银行 (601166): 仍有下行压力



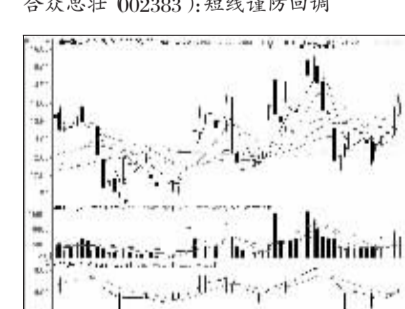
五粮液 (000858): 成交低迷, 观望



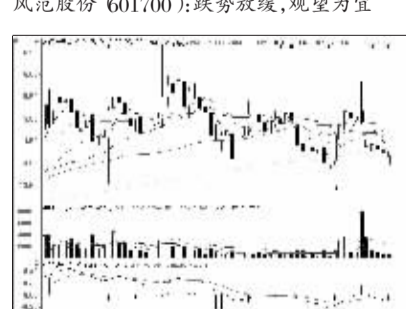
兴业矿业 (000426): 短期或反复震荡



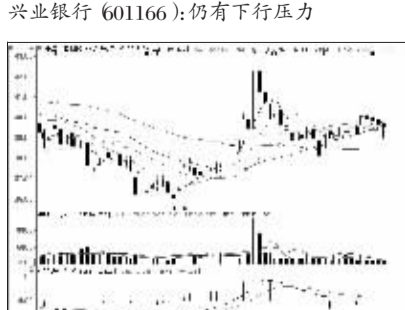
厦华电子 (600870): 高位回调, 获利适时了结



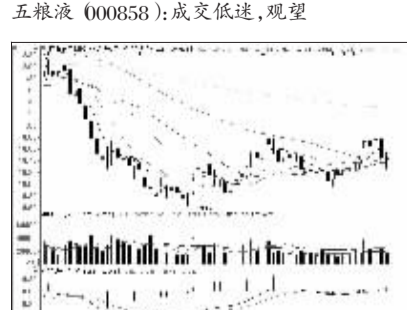
金山开发 (600679): 短线或有震荡



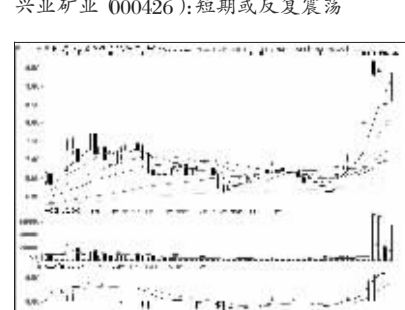
大连三垒 (002621): 震荡整理概率大



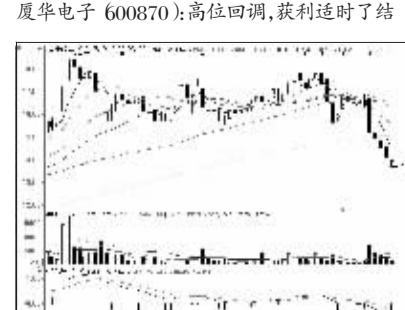
中国平安 (601318): 横盘整理或延续



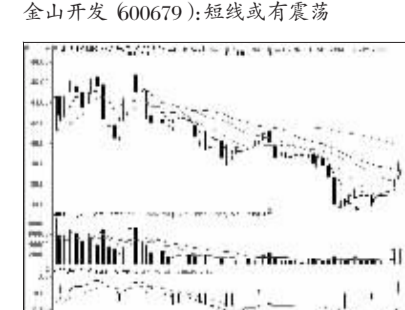
广发证券 (000776): 短期或继续下行



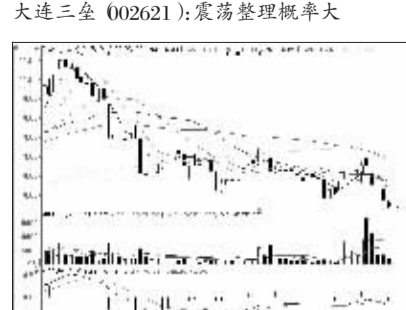
恒顺电气 (800208): 有望继续上攻



风范股份 (601700): 跌势放缓, 观望为宜



炬华科技 (600360): 短期仍或上攻



帝龙新材 (002247): 破位下跌, 暂宜回避