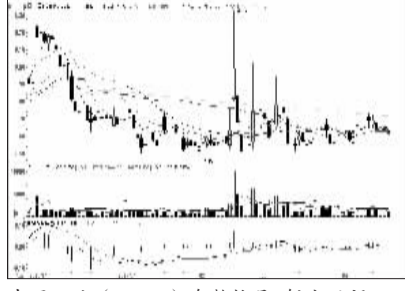


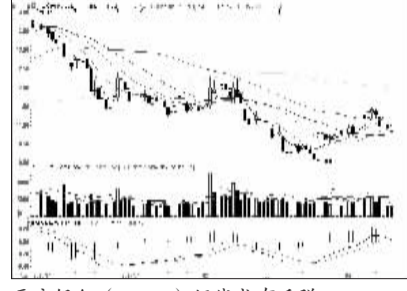
### 沪深10大权重股

沪市10大权重

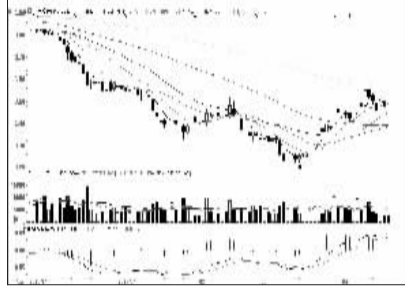


中国石油 (601857): 盘整格局, 暂宜观望

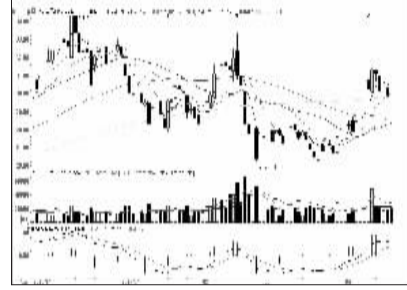
深市10大权重



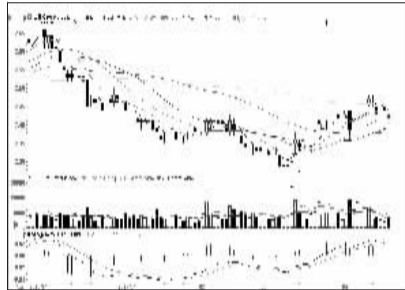
平安银行 (000001): 短线或有反弹



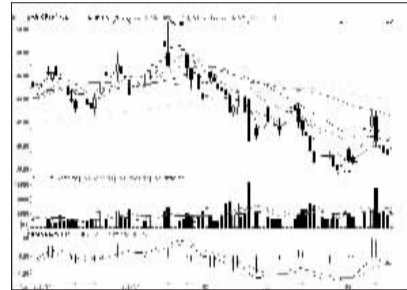
工商银行 (601398): 缩量回调, 观望



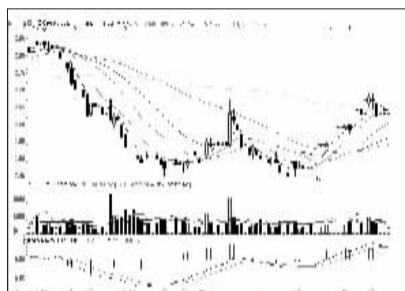
格力电器 (000651): 回调整理概率大



农业银行 (601288): 弱势格局, 暂宜观望



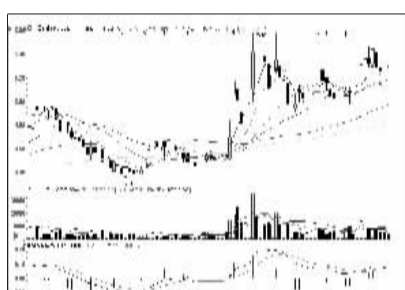
双汇发展 (000895): 短线或维持震荡



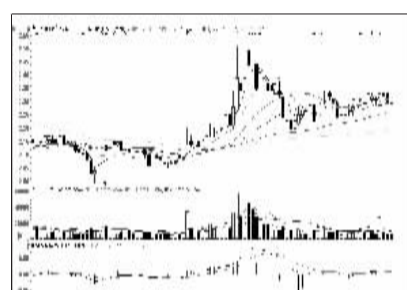
中国银行 (601988): 短线或横盘整理



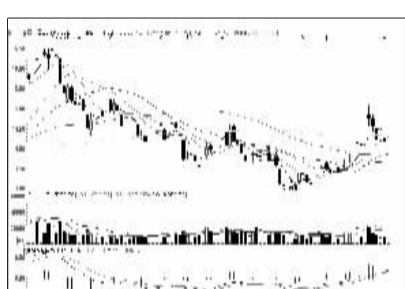
美的集团 (000333): 有望重拾升势



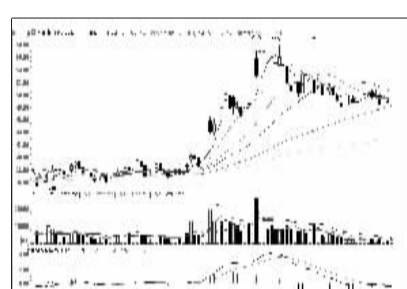
中国石化 (600028): 调整格局或延续



京东方A (000725): 获均线支撑, 继续持有



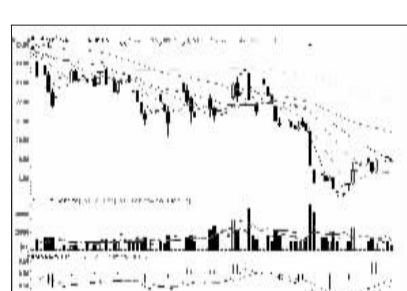
中国人寿 (601628): 短期或有反弹



比亚迪 (002594): 上涨动能不足



中国神华 (601088): 下行通道中, 回避



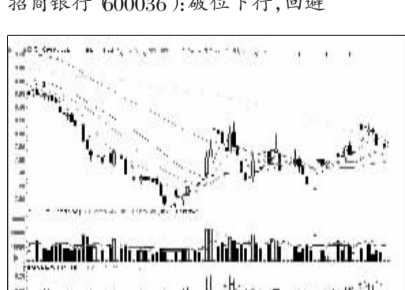
海尔威视 (002415): 温和上扬或延续



招商银行 (600036): 破位下行, 回避



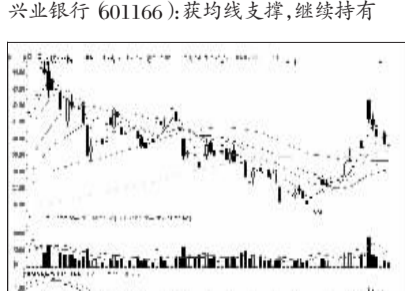
万科A (000002): 下行通道中, 回避



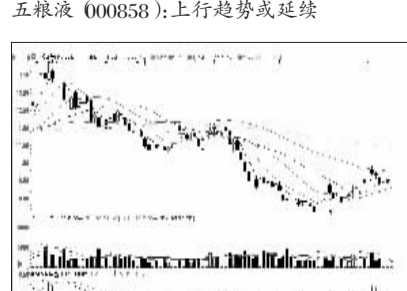
兴业银行 (601166): 获均线支撑, 继续持有



五粮液 (000858): 上行趋势或延续



中国平安 (601318): 缩量回调, 观望



广发证券 (000776): 温和上扬或延续

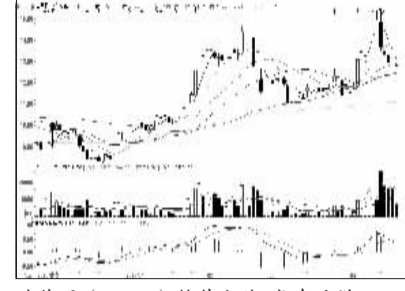
### 周涨跌幅前10

涨幅前10

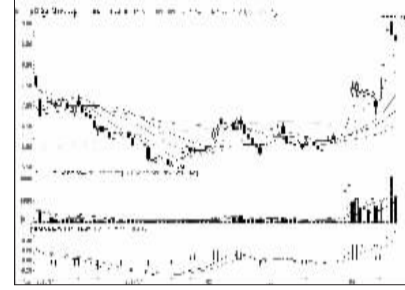


杭萧钢构 (600477): 涨幅已大, 不宜追高

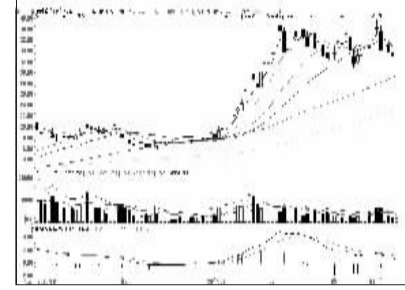
跌幅前10



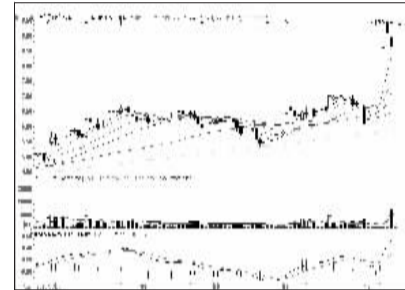
瑞茂通 (600180): 静待企稳, 或有反弹



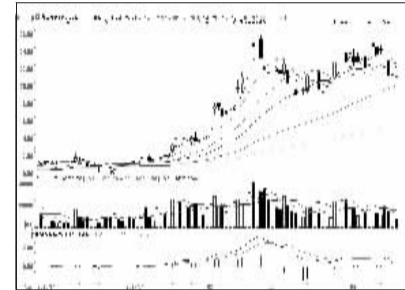
新疆城建 (600545): 高位回调, 落袋为安



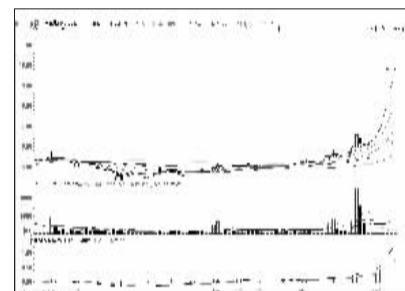
互动娱乐 (000043): 下行通道中, 回避



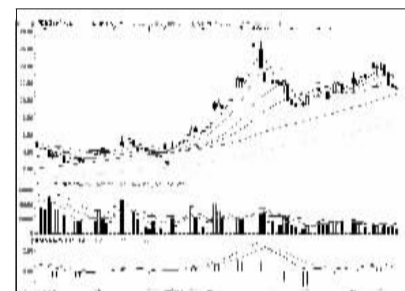
长百集团 (600856): 高位整理, 观望为宜



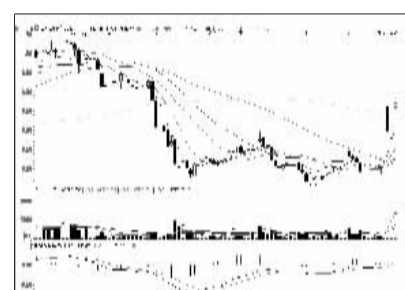
九安医疗 (002432): 行情偏弱, 回避



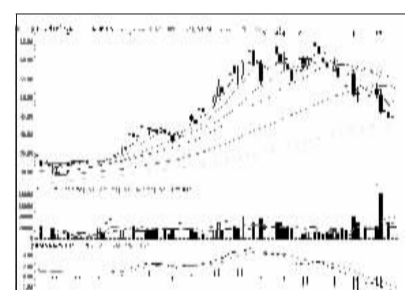
高金食品 (002143): 静待复牌, 或有反复



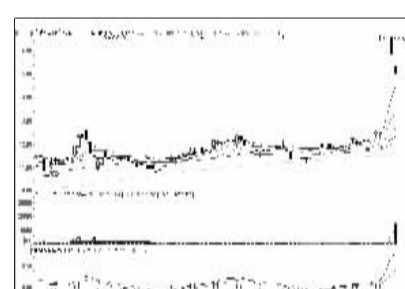
仟源制药 (600254): 下行趋势或延续



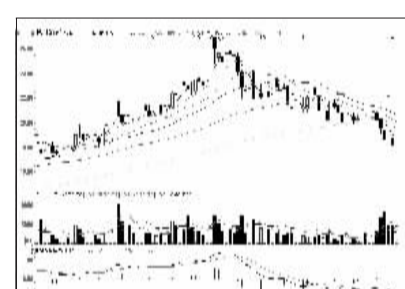
宝泰隆 (601011): 短线或有震荡



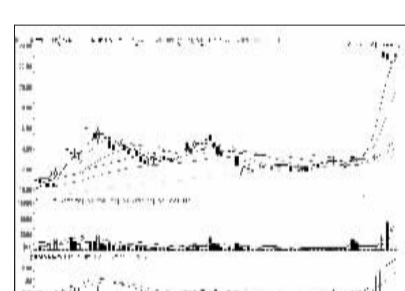
卫宁软件 (002523): 横盘整理概率大



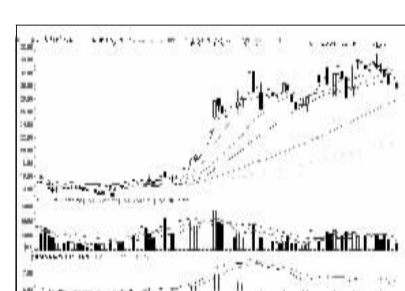
宁波热电 (600982): 短期小幅反弹可期



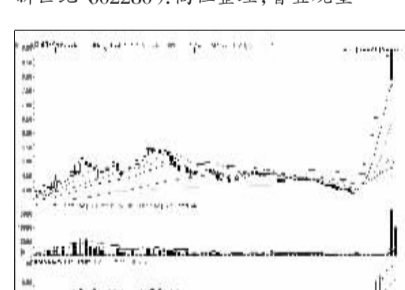
上海绿新 (002565): 弱势格局, 回避



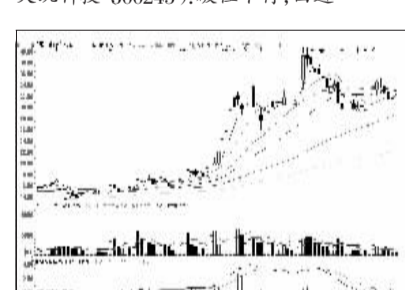
新世纪 (002280): 高位整理, 暂宜观望



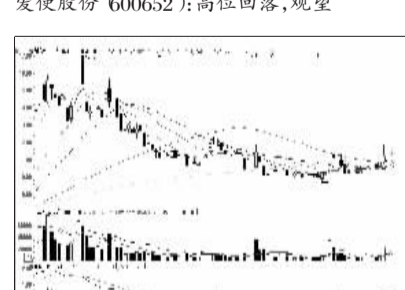
天玑科技 (00245): 破位下行, 回避



爱使股份 (600652): 高位回落, 观望



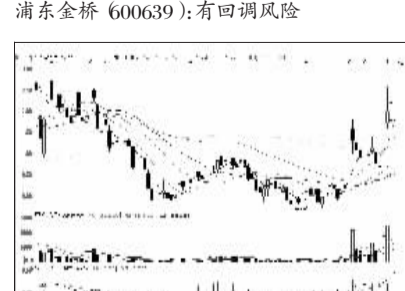
兴源过滤 (002266): 成交低迷, 观望



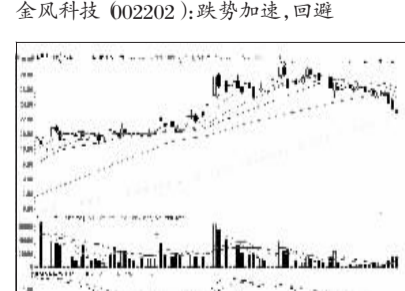
浦东金桥 (600639): 有回调风险



金风科技 (002202): 跌势加速, 回避



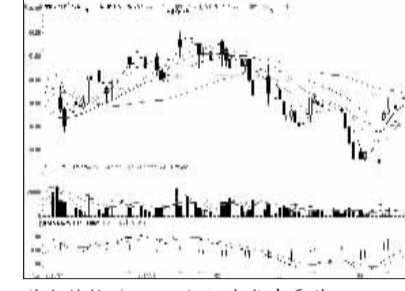
北部湾港 (000582): 上涨空间收窄



圣莱达 (002473): 空头格局, 回避

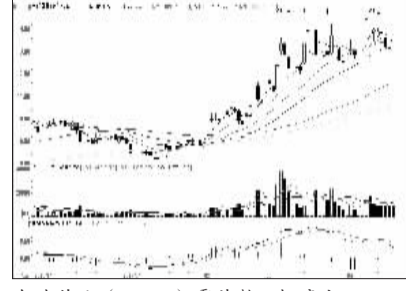
### 连续涨跌前10

连涨前10

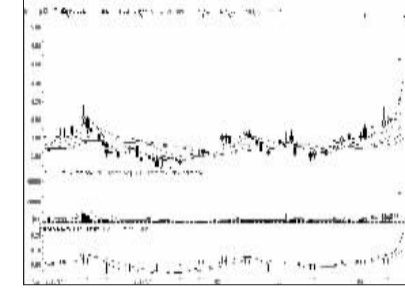


苏大维格 (600331): 短线或有震荡

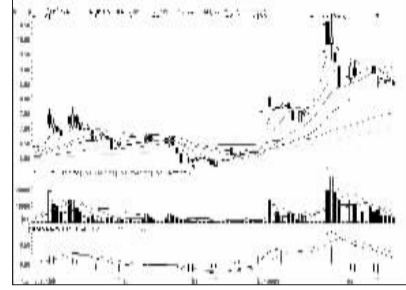
连跌前10



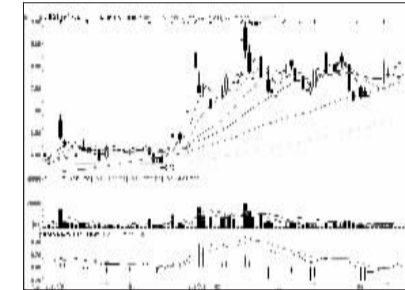
金陵药业 (000919): 震荡整理概率大



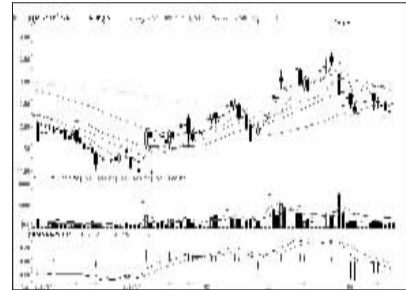
杭萧钢构 (600477): 涨幅已大, 不宜追高



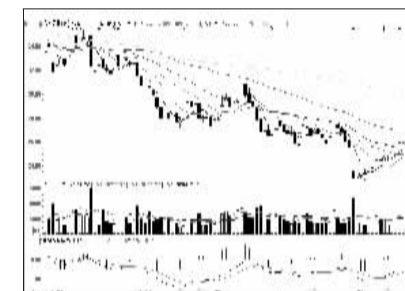
拓中建设 (002346): 弱势格局暂难改变



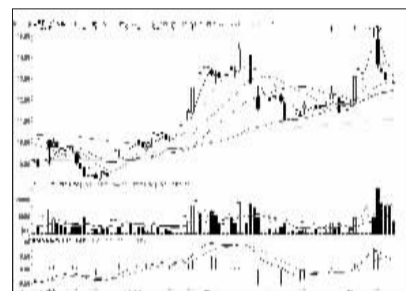
天晟新材 (600169): 稳步上扬, 持有



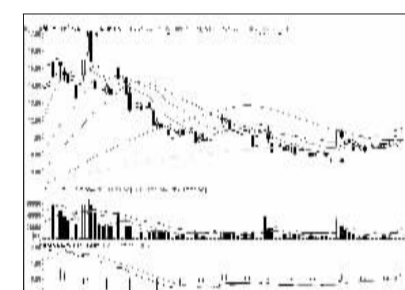
朗泰控股 (600687): 下行通道中, 回避



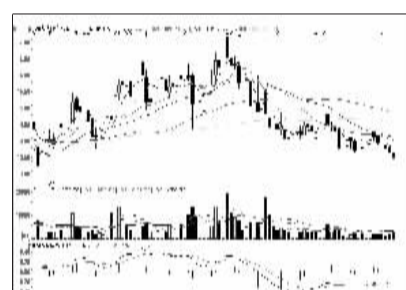
东方园林 (002310): 价量配合不佳, 观望



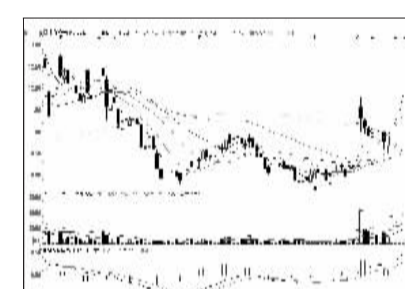
瑞茂通 (600180): 弱势格局, 观望



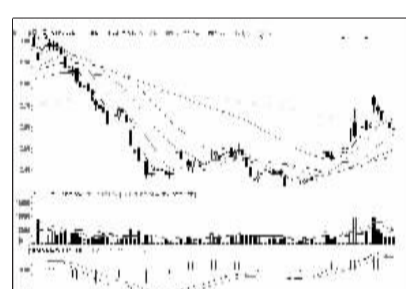
浦东金桥 (600639): 有回调风险



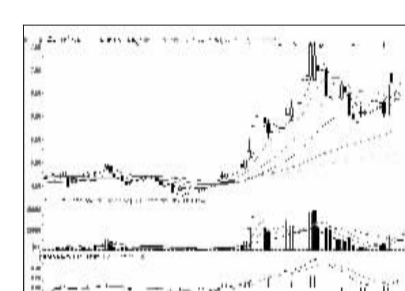
佳都科技 (600728): 弱势格局延续



北部湾港 (000582): 上涨空间收窄



中国中铁 (601390): 静待企稳, 或有反弹



万马电缆 (002276): 仍有震荡上涨可能



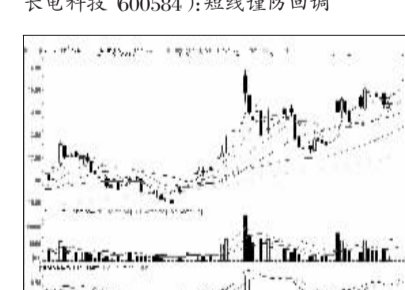
小商品城 (600415): 下行趋势或延续



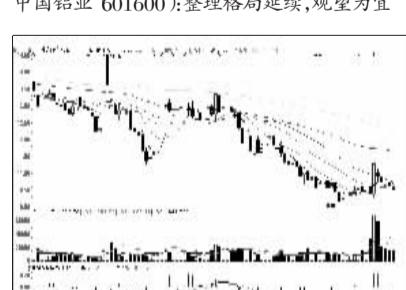
长电科技 (600584): 短线谨防回调



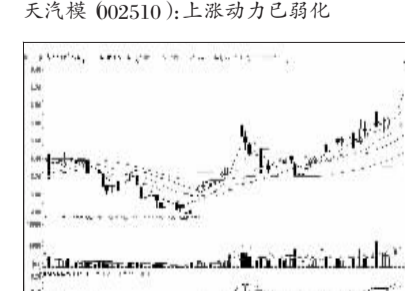
中国铝业 (601600): 整理格局延续, 观望为宜



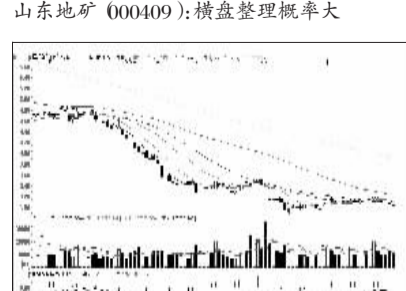
天汽模 (002510): 上涨动力已弱化



山东地矿 (000409): 横盘整理概率大



林海股份 (600099): 放量冲高, 谨防回调



国投新集 (601918): 弱势格局暂难改变