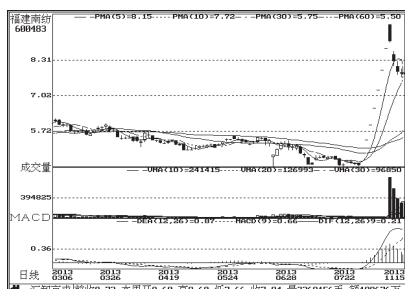


## 股东人数增减前10

股东人数减少前10



福建南纺 (600483):震落后仍有上涨空间

股东人数增加前10



美亚光电 (002690):短线谨防回调

资金流入金额前10



中国卫星(600118):短期强势,继续持有

资金流出金额前10



浦发银行(600000):维持弱势震荡

成交突增前10



联信永益(002373):短线回调,观望

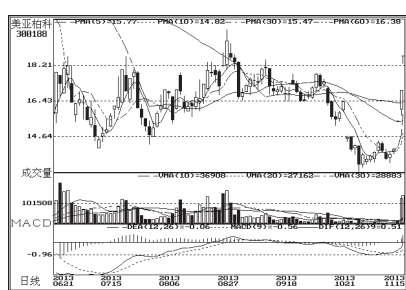
成交金额前8



华谊兄弟(300027):维持震荡



一拖股份 (601038):上涨空间较大



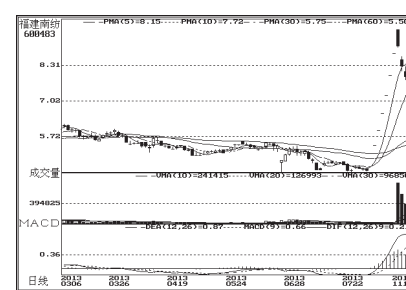
美亚柏科 (600188):短期上攻态势,持有



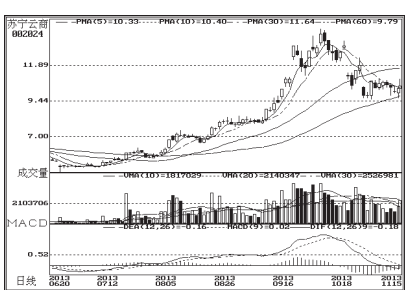
中国平安(601318):继续持有



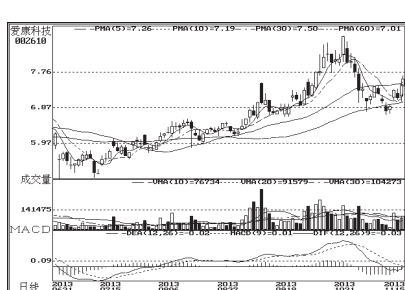
包钢稀土(600111):维持震荡



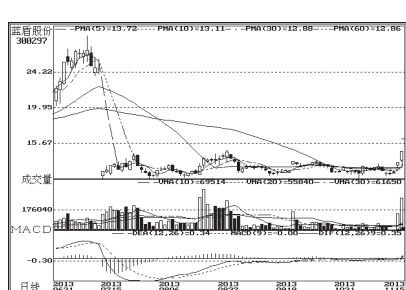
福建南纺(600483):短线回调,观望



苏宁云商(002024):考验60日均线支撑



爱康科技 (002610):反弹延续概率大



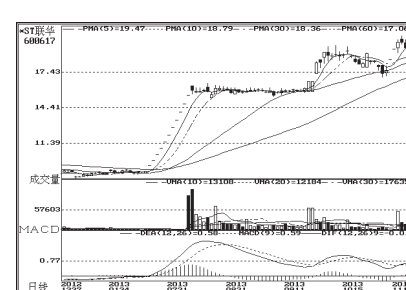
蓝盾股份 (600297):均线多头发散,买入



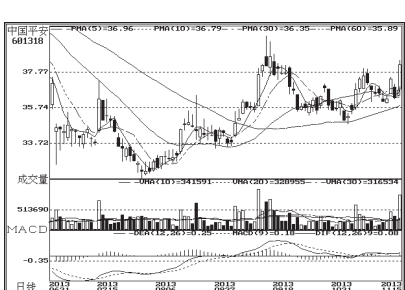
四川长虹(600839):短期强势,继续持有



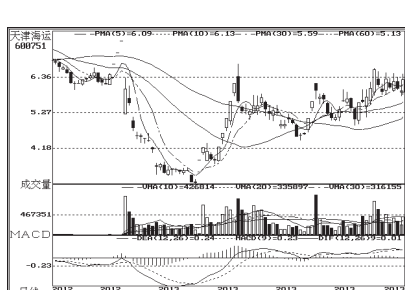
民生银行(600016):均线空头排列,减仓



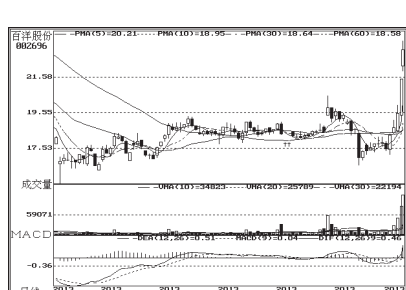
\*ST联华(600617):维持震荡



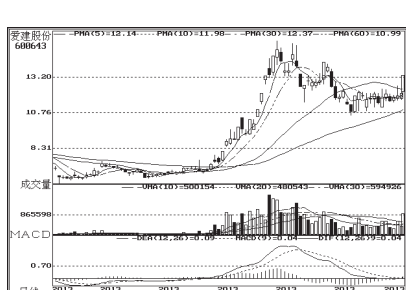
中国平安(601318):继续持有



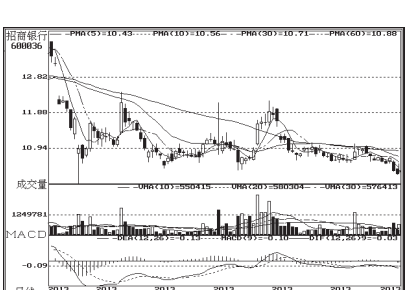
天津海运 (600751):或继续向上拓展



百洋股份 (002696):短线或回调



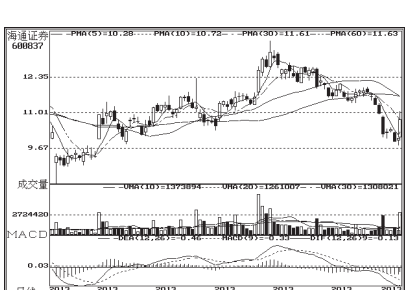
爱建股份(600643):继续持有



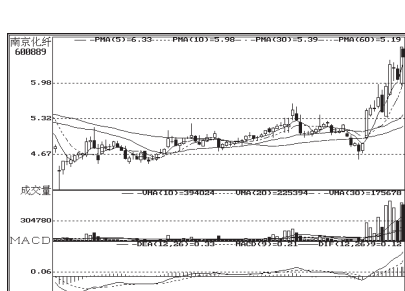
招商银行(600036):均线弱势下行,观望



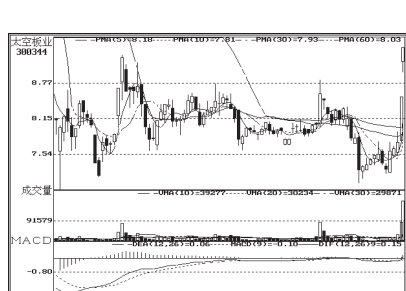
锐奇股份(300126):继续持有



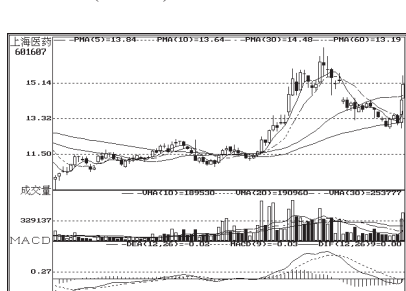
海通证券(600837):逼近压力区域



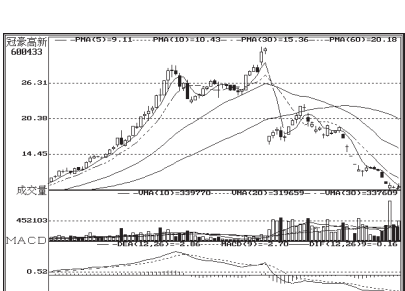
南京化纤 (600889):短线回调无碍反弹趋势



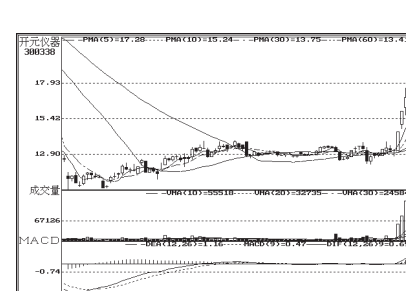
大空板业 (600344):短线或有震荡



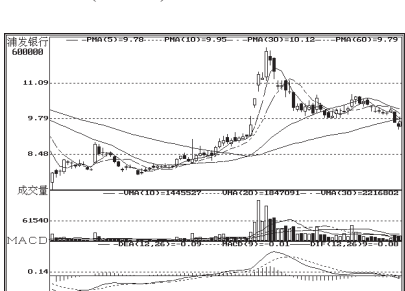
上海医药(601607):短期强势,继续持有



冠豪高新(600433):均线遭遇阻挡,卖出



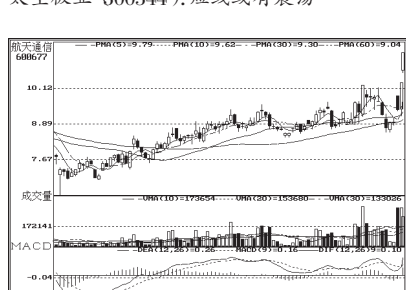
开元仪器(300338):短期强势,继续持有



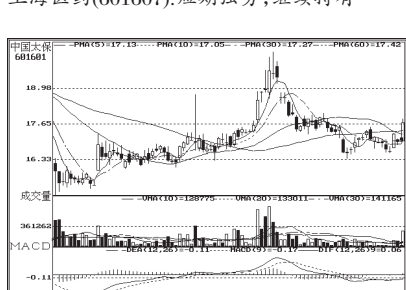
浦发银行(600000):维持弱势震荡



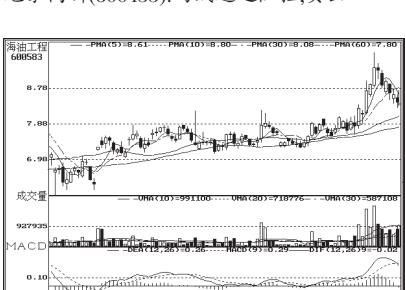
龙宇燃油 (603003):反弹可期,持有



航天通信 (600677):仍有上涨可能



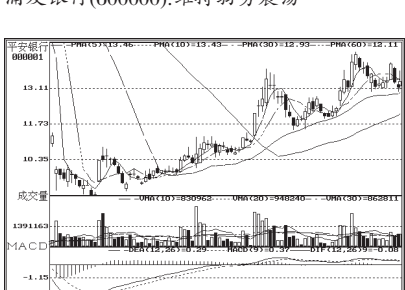
中国太保(601601):逼近压力区域



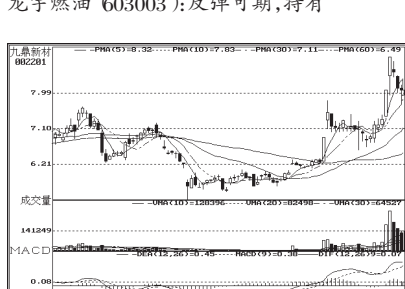
海油工程(600583):有资金出逃迹象,减仓



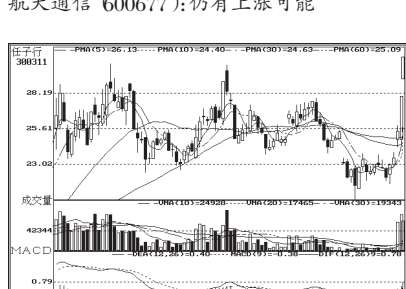
瑞丰新材(300243):短期强势,继续持有



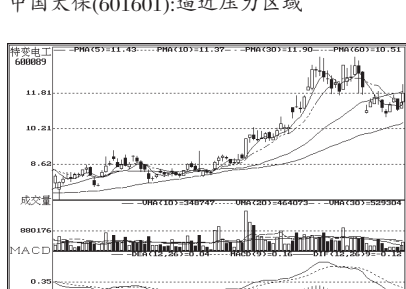
平安银行(000001):维持震荡,观望



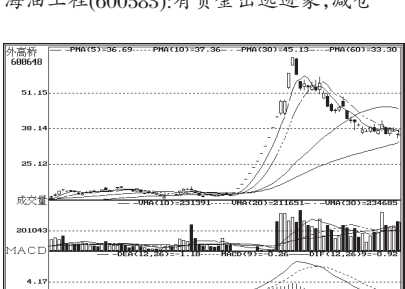
九鼎新材 (002201):短线回调,仍或上涨



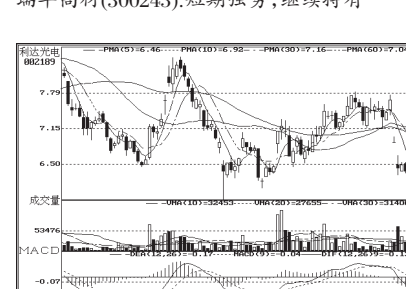
任子行 (600311):震荡上行概率大



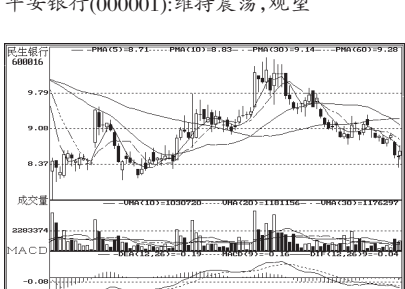
特变电工(600089):保持观望



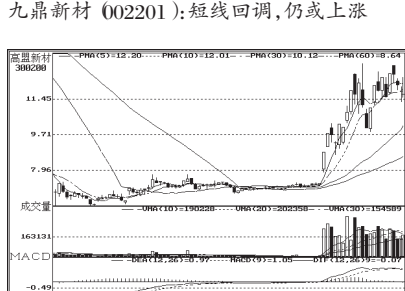
外高桥(600648):考验60均线支撑



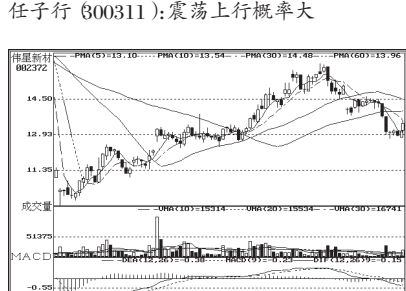
利达光电(002189):维持震荡



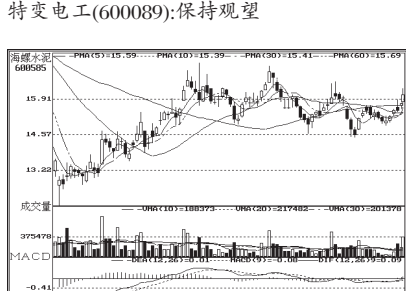
民生银行(600016):均线空头排列,减仓



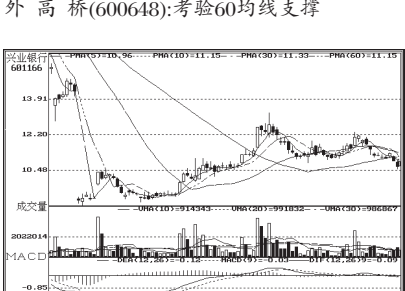
高盟新材 (600200):震荡上涨概率大



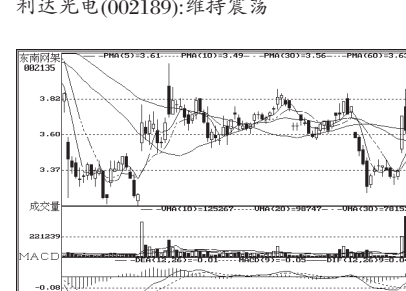
伟星新材 (002372):反弹料延续



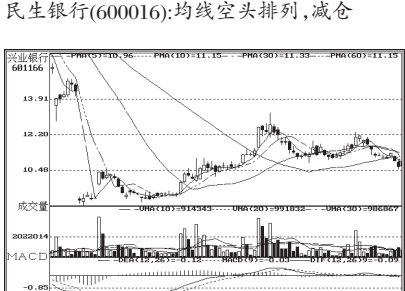
海螺水泥(600585):逼近压力区域



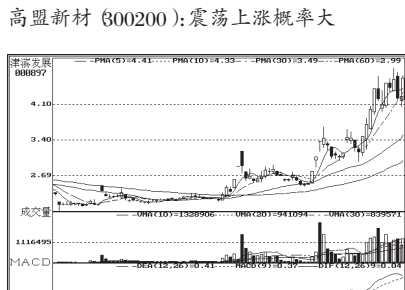
TCL集团(000100):维持弱势震荡



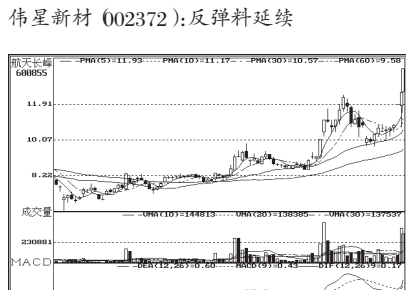
禾盛新材(002290):维持震荡



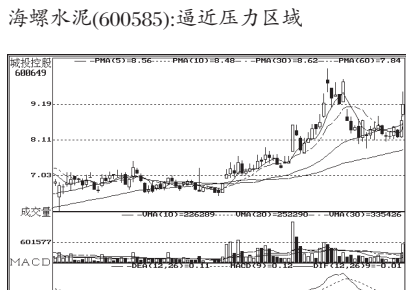
红宇新材(300345):逼近压力区域



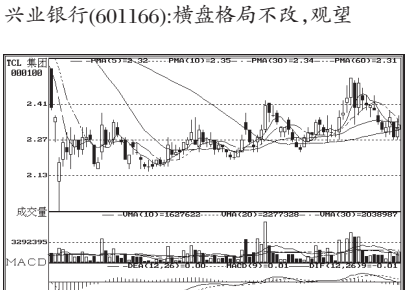
津滨发展 (600897):仍有上涨空间



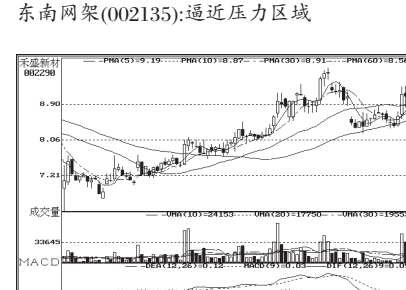
航天长峰 (600855):仍有上涨空间



城投控股(600649):维持震荡



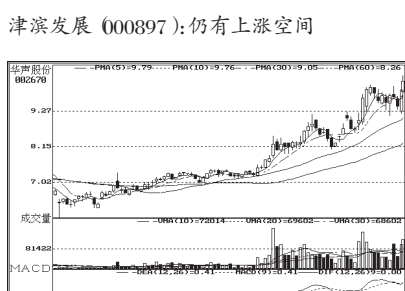
TCL集团(000100):维持弱势震荡



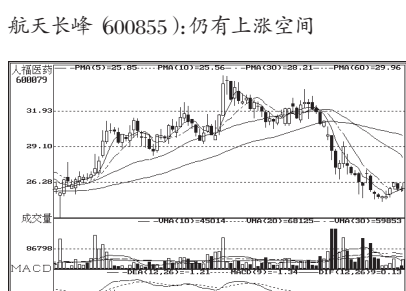
禾盛新材(002290):维持震荡



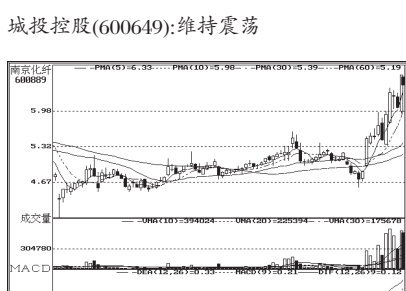
红宇新材(300345):逼近压力区域



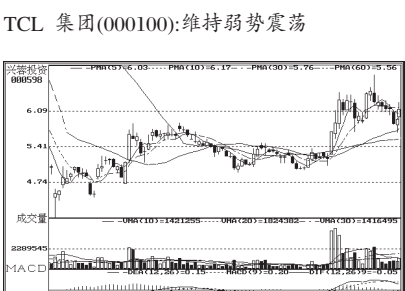
华声股份(002670):强势格局,持有



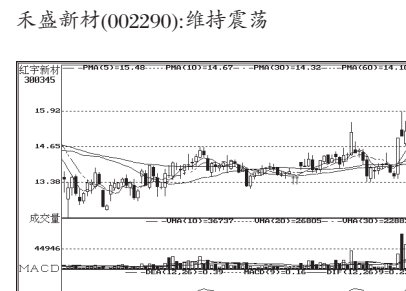
人福医药 (600079):短线反弹可期



南京化纤(600889):高位回调,观望



兴蓉投资(000598):维持震荡



红宇新材(300345):逼近压力区域

北京汇智高科倾情打造——

**汇智京求**

《证券资讯传播系统》

(全媒体版)现启动:

全面升级、全新合作!

新老客户垂询电话:  
010-82710517\18 (或) 18001150095