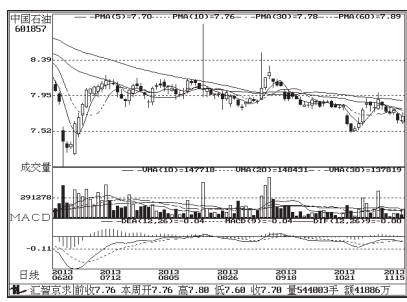
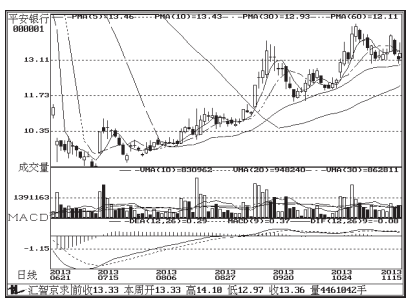


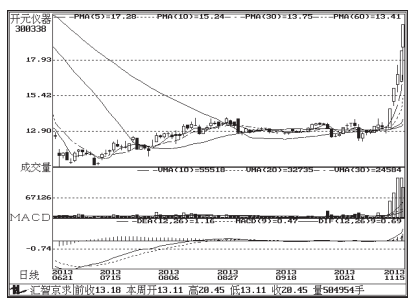
沪深10大权重股



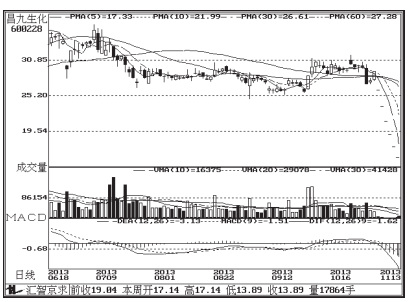
中国石油(601857):均线震荡下行,观望



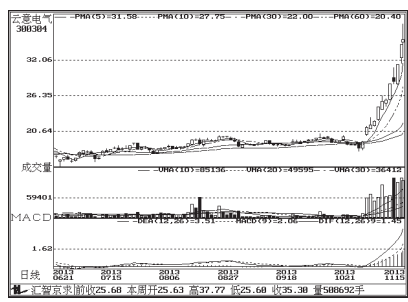
平安银行(000001):维持震荡,观望



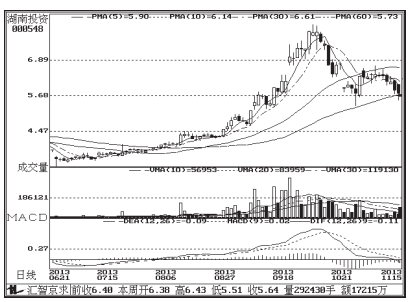
开元仪器 800338):短期强势,继续持有



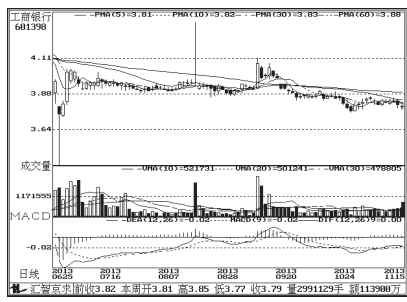
昌九生化(600228):均线明显受压,卖出



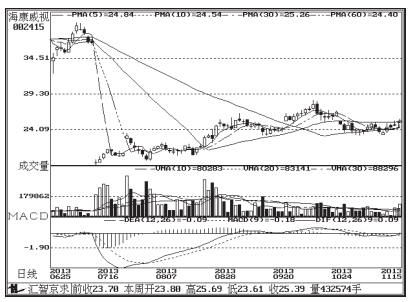
云意电气(300304):短线上攻较猛,持有



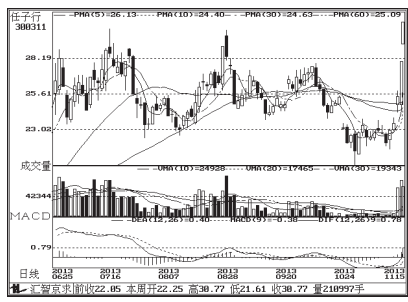
湖南投资(000548):面临下调压力,观望



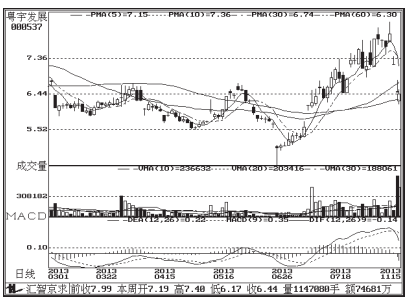
工商银行(601398):处于底部整理,观望



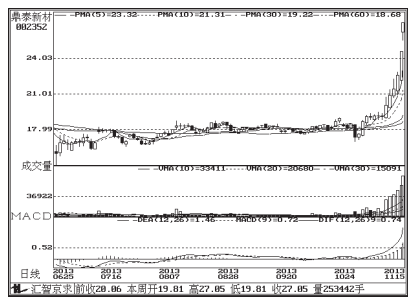
海康威视(002415):上行能量稍弱,观望



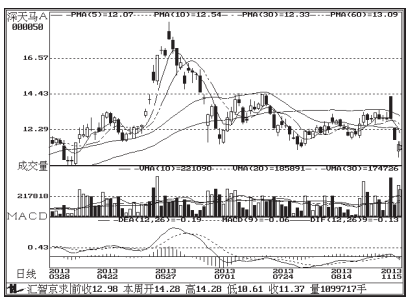
任子行(300311):震荡上行概率大



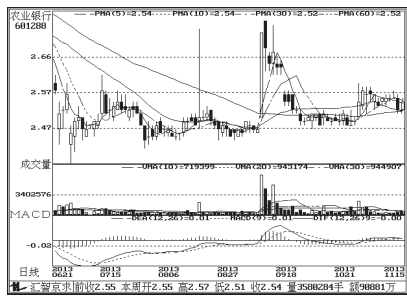
广宇发展(000537):盘中大单打压,观望



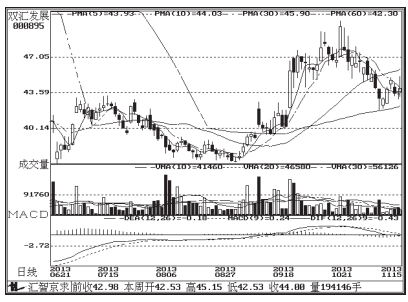
鼎泰新材(002352):延续上行态势,持有



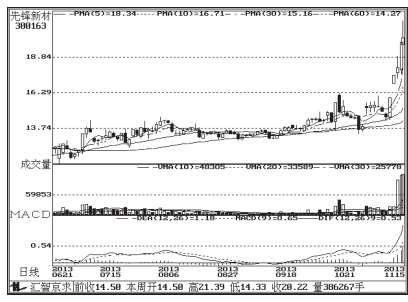
深天马A(000050):均线下行明显,观望



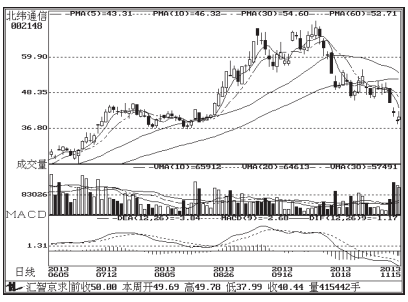
农业银行(601288):低档反复整理,观望



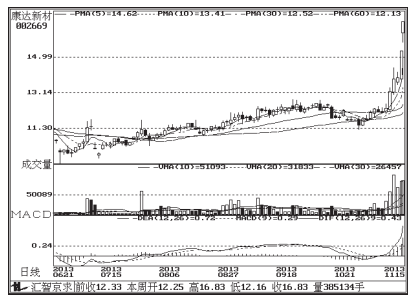
双汇发展(000895):短期或向上突破,持有



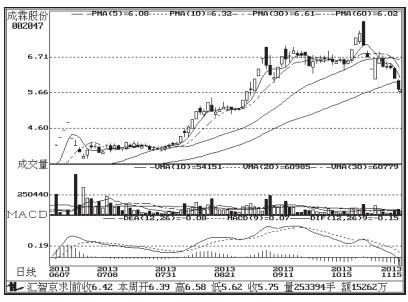
先锋新材(300163):均线助涨明显,买入



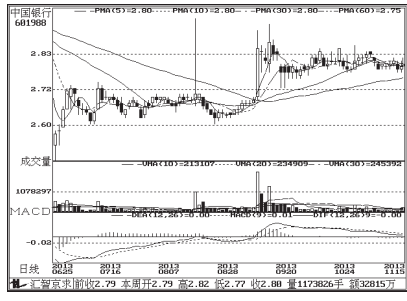
北纬通信(002148):均线空头排列,减磅



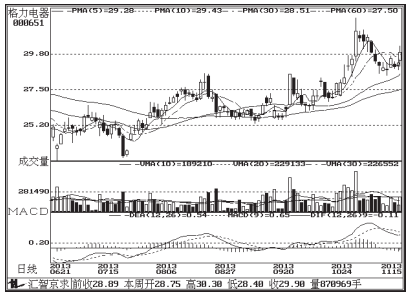
康达新材(002669):均线助涨有力,持有



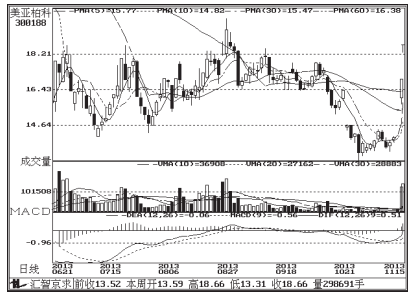
*ST威震(002047): 有一定止跌迹象,买入



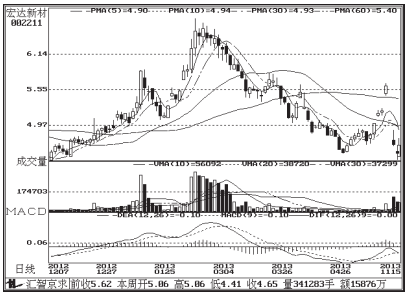
中国银行(601988):盘整态势持续,观望



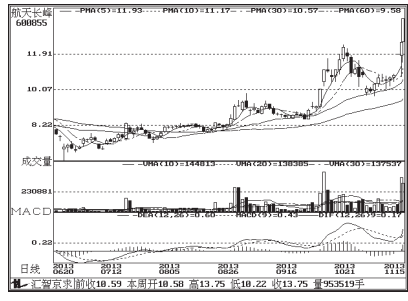
格力电器(000651):均线有下行压力,卖出



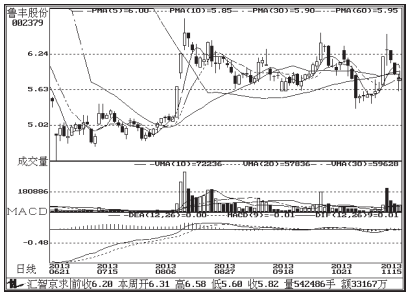
美亚柏科(300188):仍有上涨空间



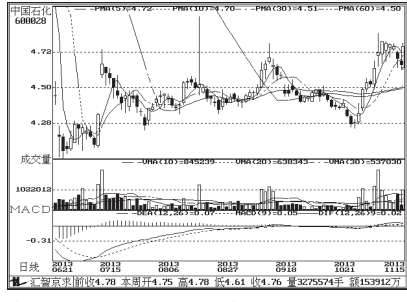
宏达新材(002211):均线掉头向下,观望



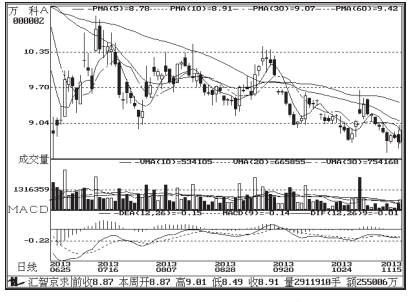
航天长峰(600855):仍有上涨空间



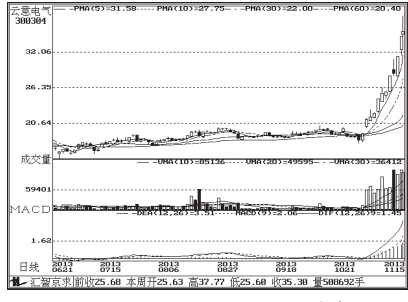
鲁丰股份(002379):短期仍将走弱,观望



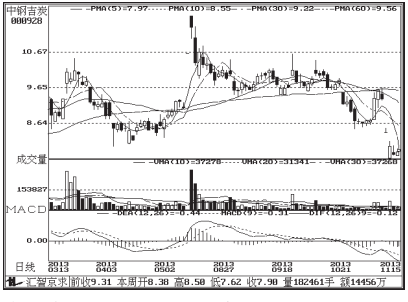
中国石化(600028):均线多头排列,买入



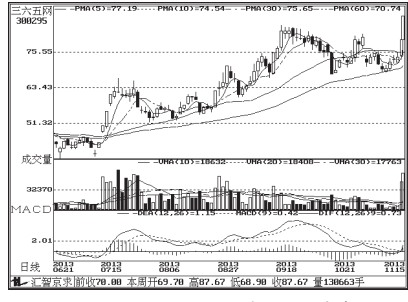
万科A(000002):均线空头排列,卖出



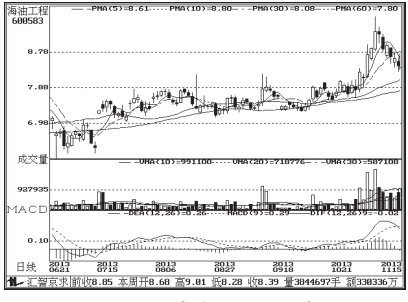
云意电气(300304):短线上攻较猛,持有



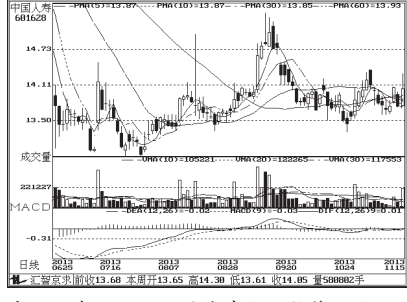
中钢吉炭(000928):均线震荡下行,观望



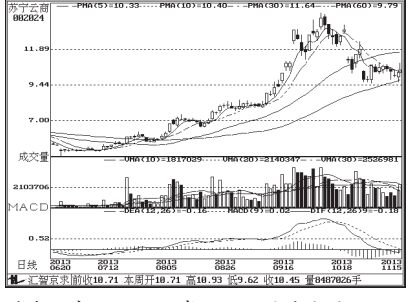
三六五网(300295):上行态势明显,持有



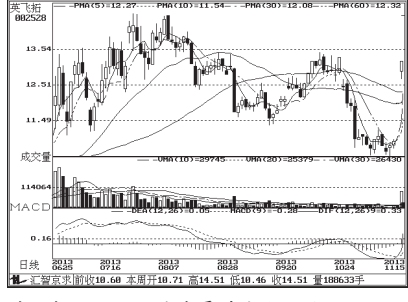
海油工程(600583):有资金出逃迹象,减仓



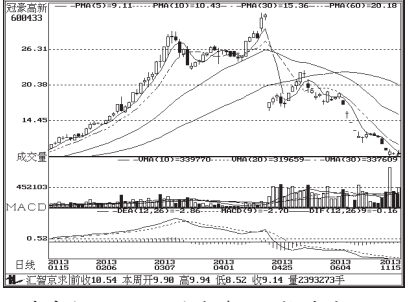
中国人寿(601628):均线有上翘趋势,观望



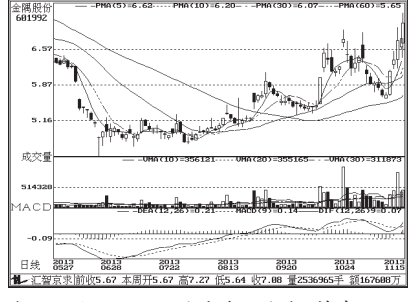
苏宁云商(002024):考验60日均线支撑



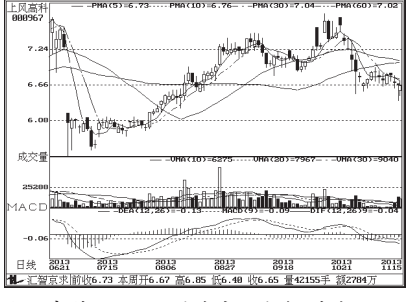
英飞拓(002528):均线震荡向上,观望



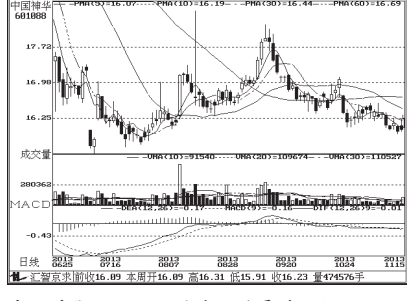
冠豪高新(600433):均线遭遇阻挡,卖出



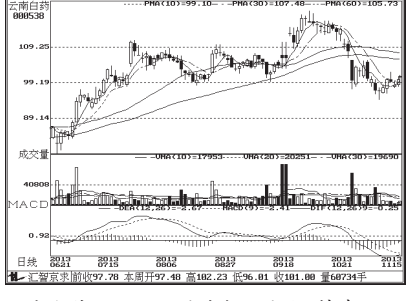
金隅股份(601992):均线多头发散,持有



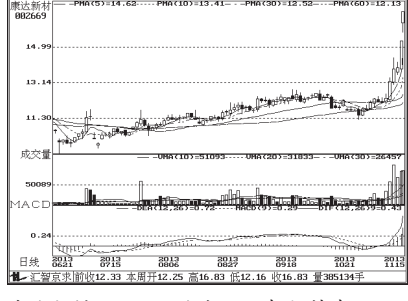
上风高科(000967):均线空头发散,减仓



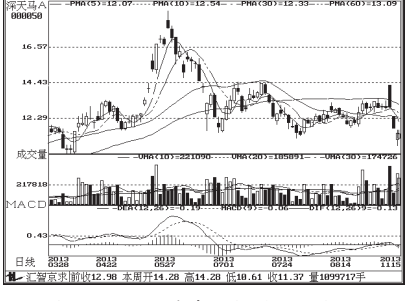
中国神华(601088):均线继续震荡下行,观望



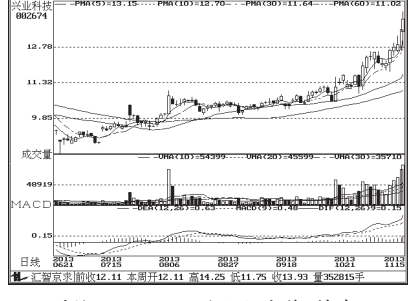
云南白药(000538):均线拐头向上,持有



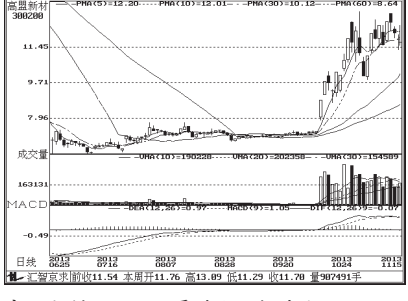
康达新材(002669):均线助涨有力,持有



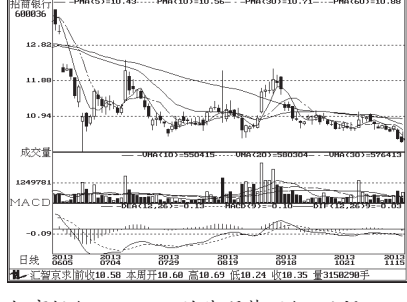
深天马A(000050):均线下行明显,观望



兴业科技(002674):延续上行态势,持有



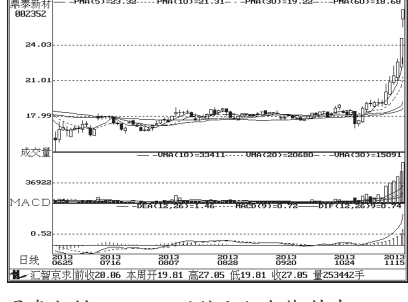
高盟新材(300200):震荡上涨概率大



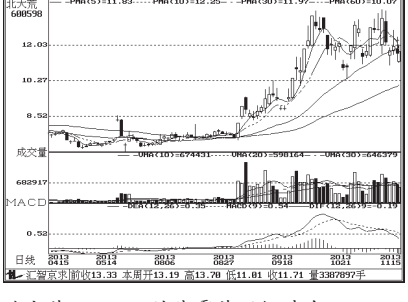
招商银行(600036):均线弱势下行,观望



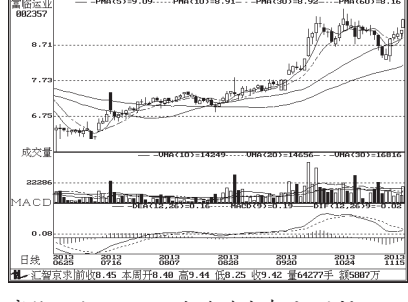
广发证券(000776):继续底部盘整格局,观望



鼎泰新材(002352):延续上行态势,持有



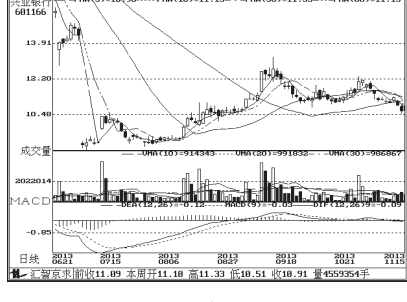
北大荒(600598):均线震荡下行,减仓



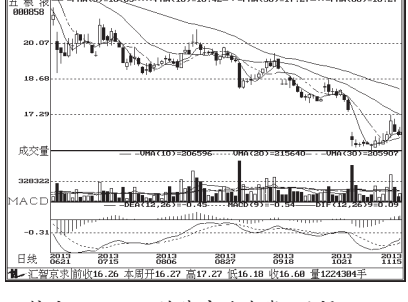
富临运业(002357):上攻动力有限,观望



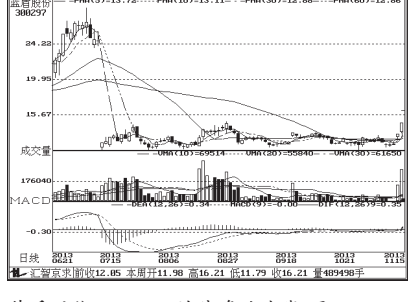
远方光电(300306):均线震荡向上,持有



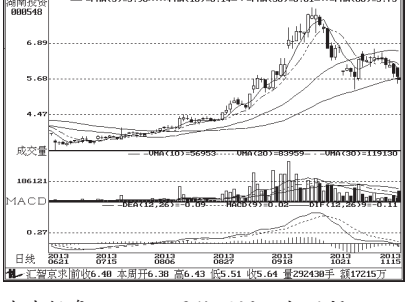
兴业银行(601166):横盘格局不改,观望



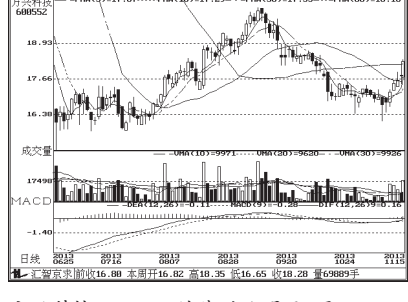
五粮液(000858):均线空头发散,观望



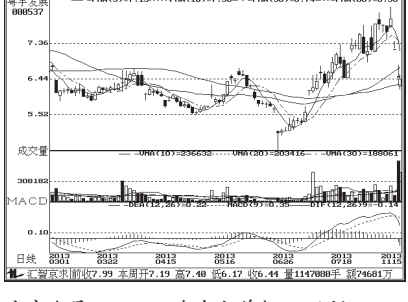
蓝盾股份(300297):均线多头发散,买入



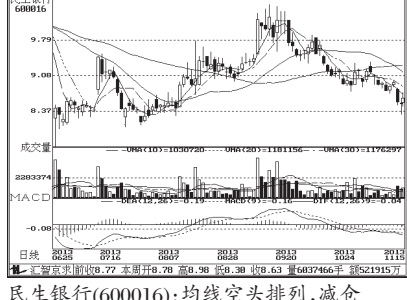
湖南投资(000548):面临下调压力,观望



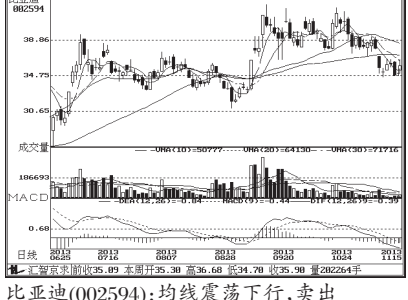
方兴科技(600552):均线助涨明显,买入



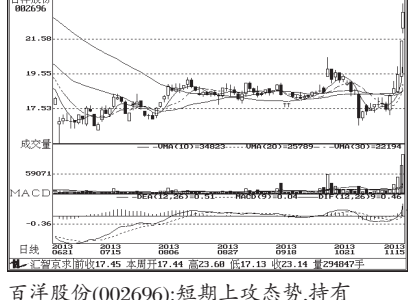
广宇发展(000537):盘中大单打压,观望



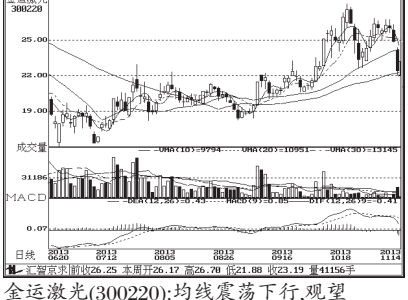
民生银行(600016):均线空头排列,减仓



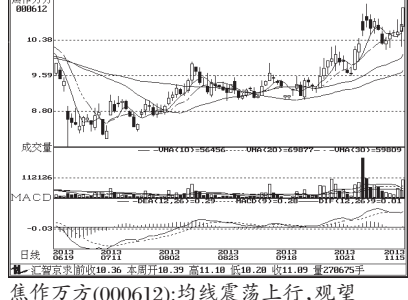
比亞迪(002594):均线震荡下行,卖出



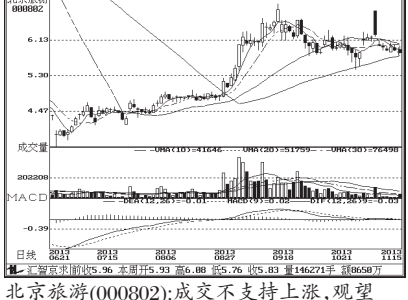
百洋股份(002696):短期上攻态势,持有



金运激光(300220):均线震荡下行,观望



焦万方(000612):均线震荡上行,观望



北京旅游(000802):成交不支持上涨,观望