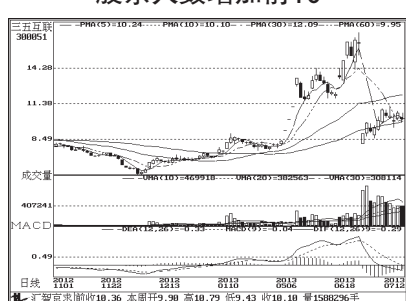


股东人数增减前10

股东人数减少前10



股东人数增加前10



一周资金流入流出金额前10

资金流入金额前10

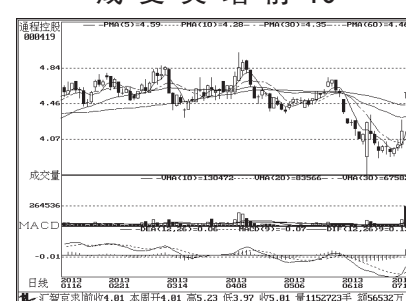


资金流出金额前10

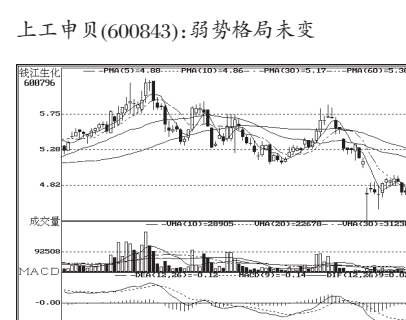
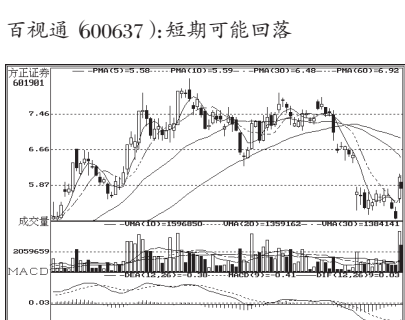
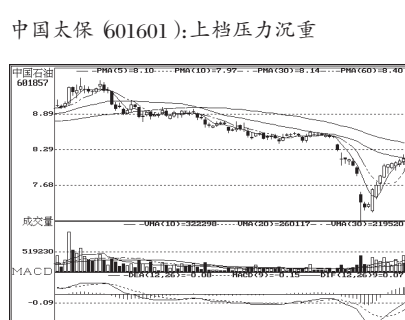
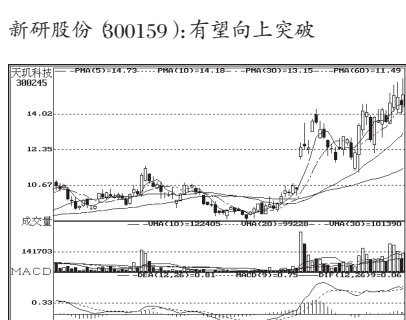
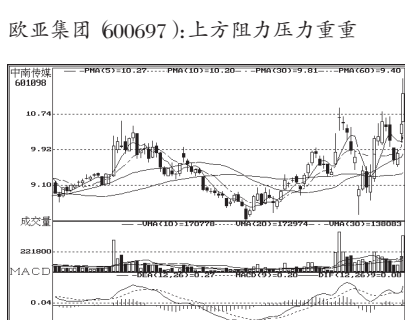
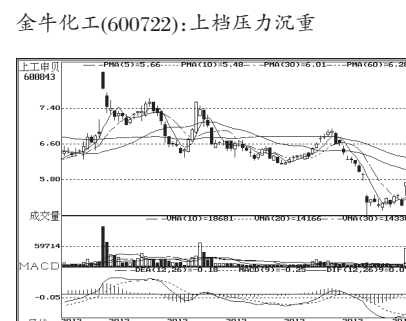
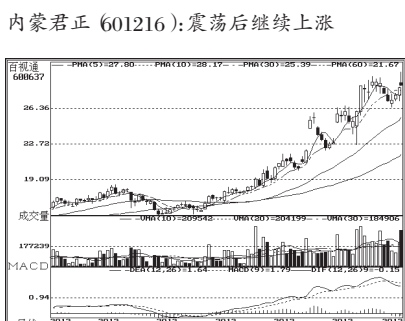
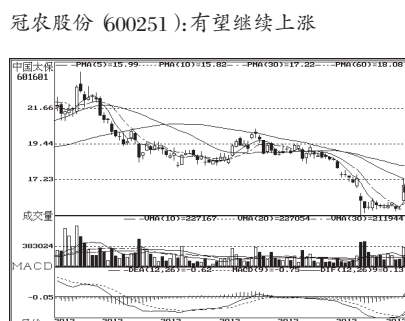
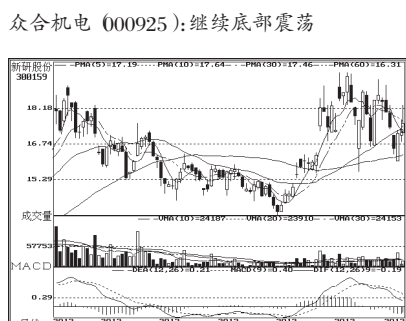
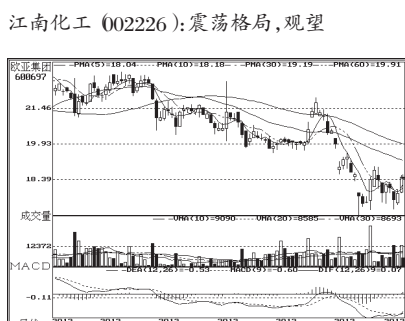
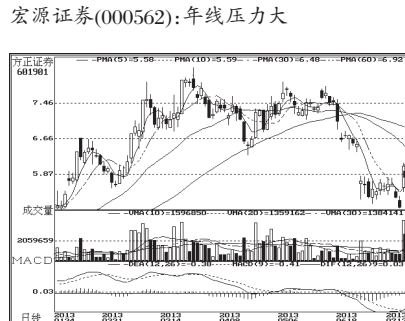
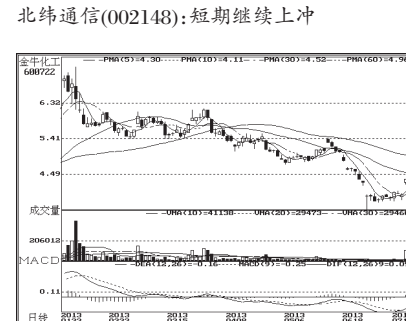
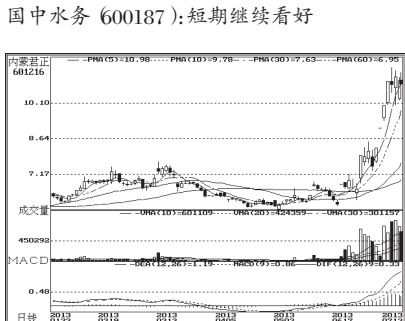
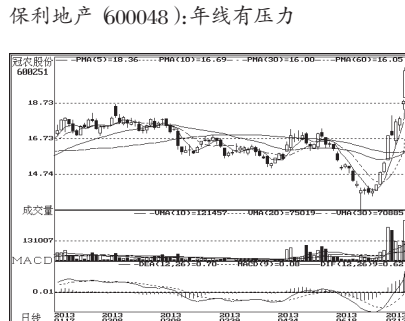
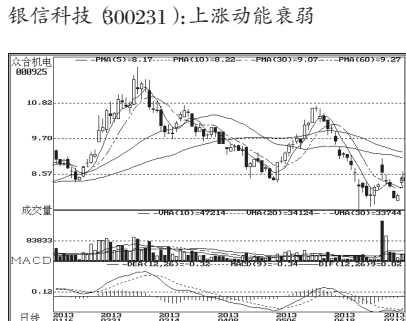
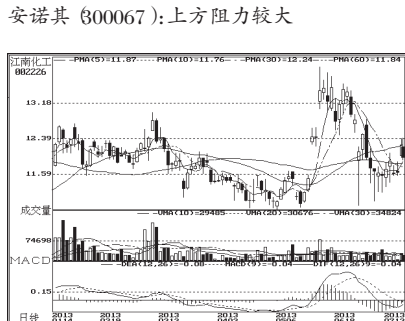
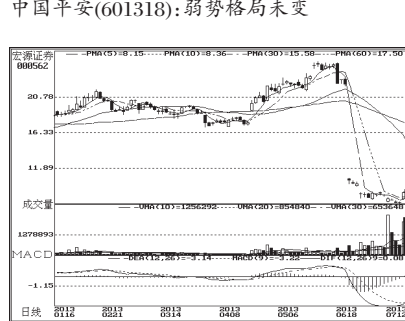
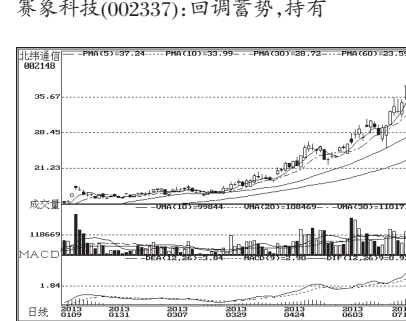
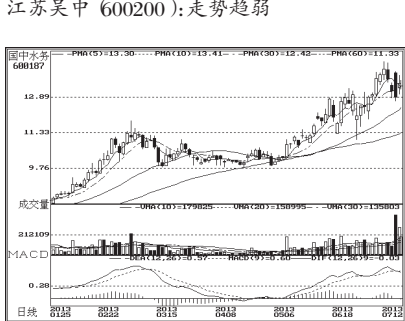
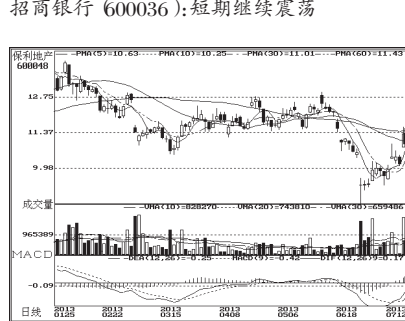
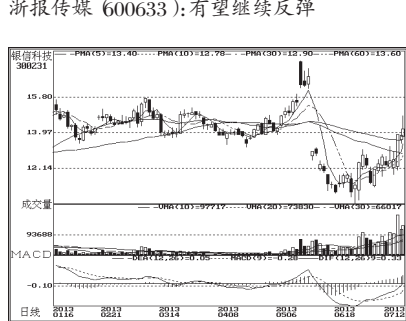
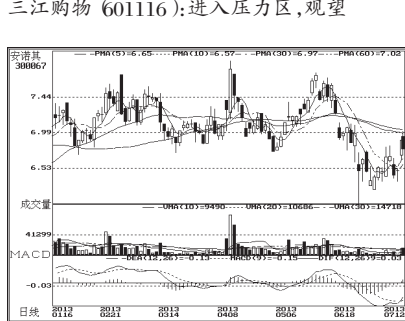
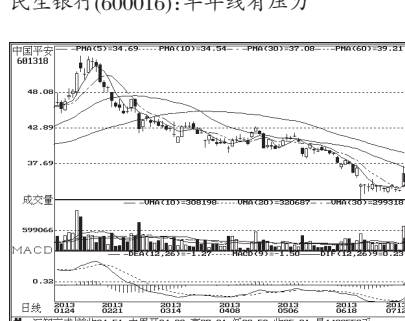
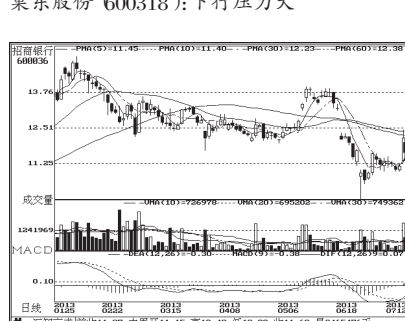
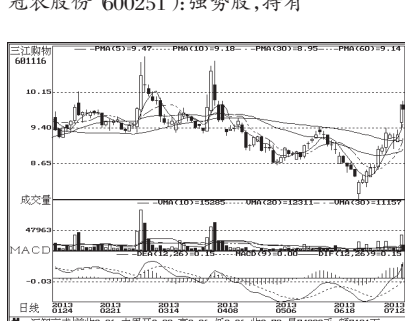
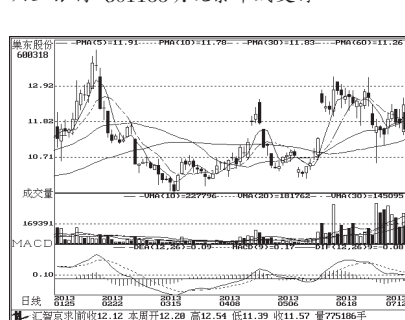
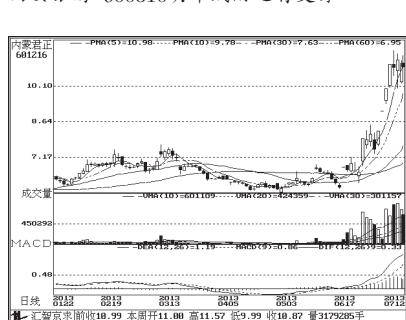
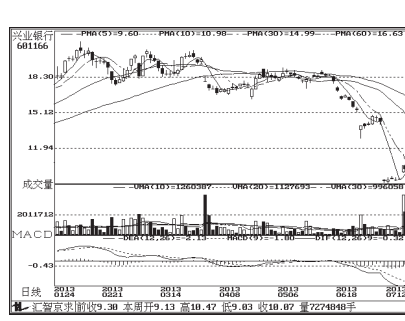
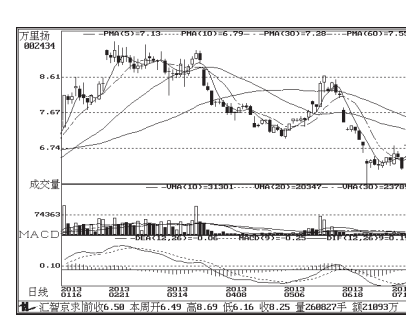
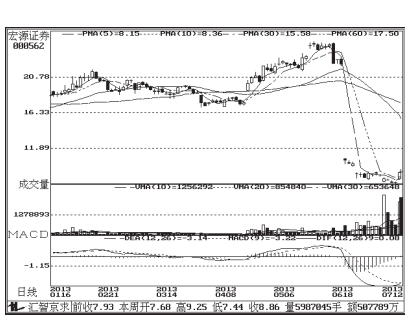
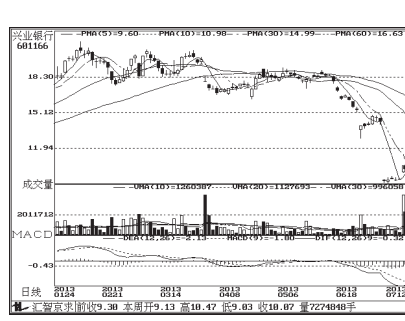
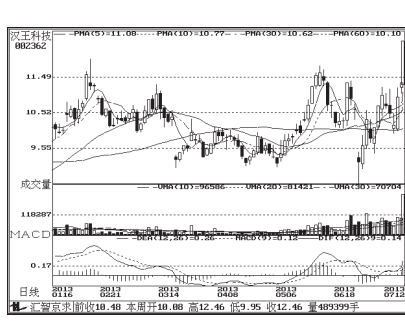
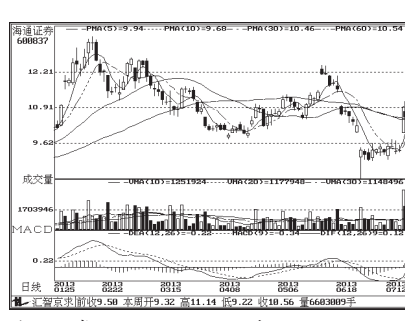
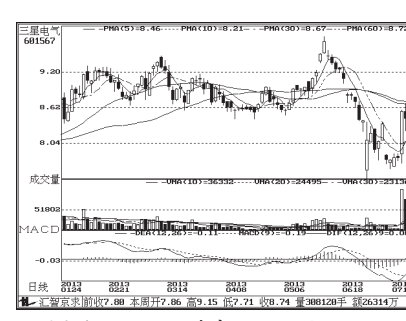
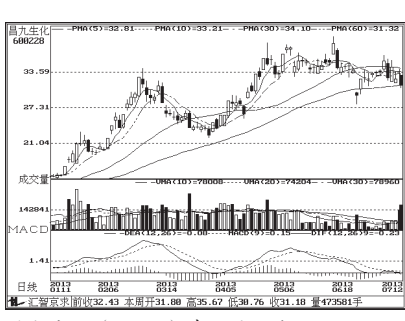
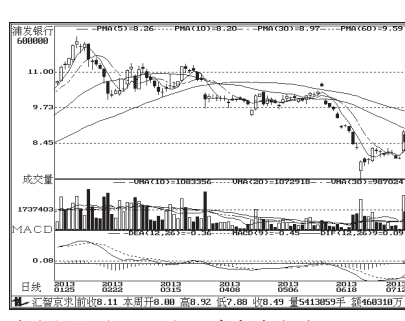
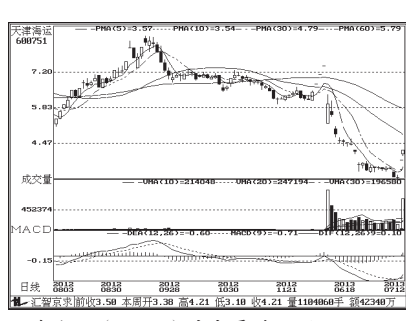
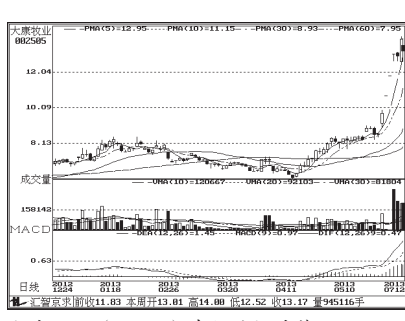
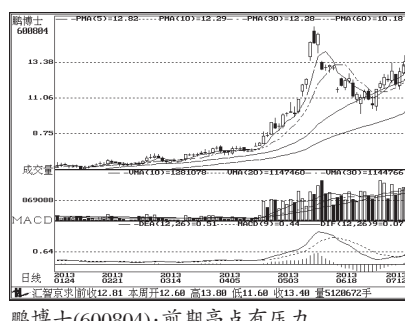
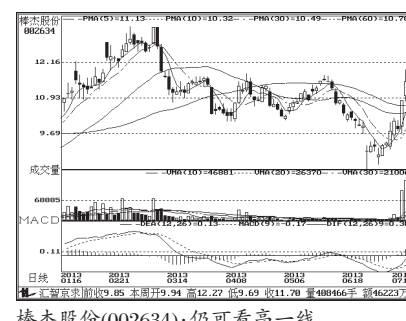
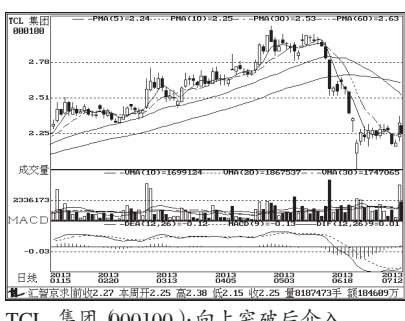
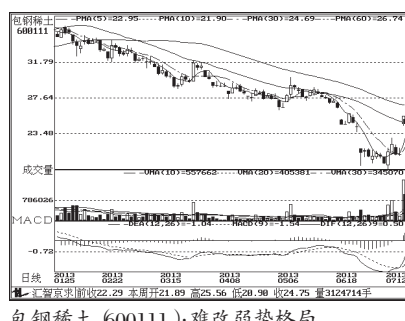
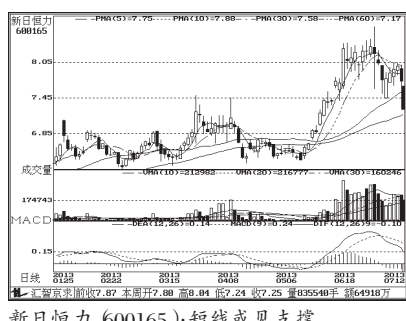
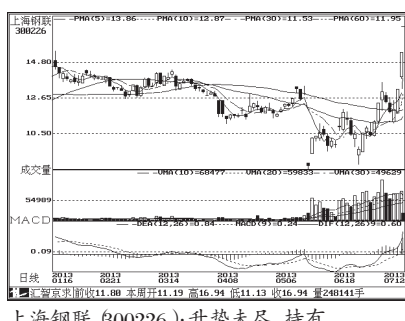


周成交金额

成交突增前10



成交金额前8



北京汇智高科倾情打造——

汇智京求

《证券资讯传播系统》

(全媒体版) 现启动:

全面升级、全新合作!

新老客户咨询电话:
010-82710517\18 (或) 18001150095