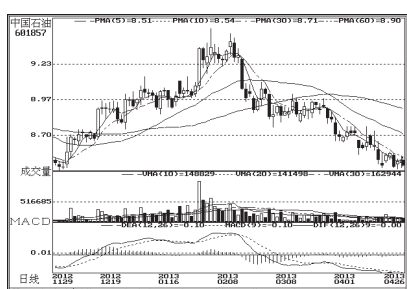
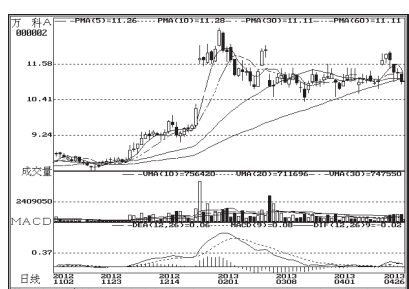


沪深10大权重股



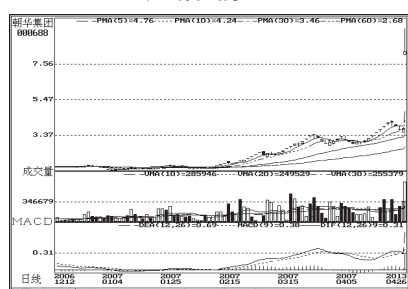
中国石油 601857:震荡格局未变



万科A 000002:继续持有

周涨跌幅前10

涨幅前10



朝华集团 000688:复牌首日,待观察

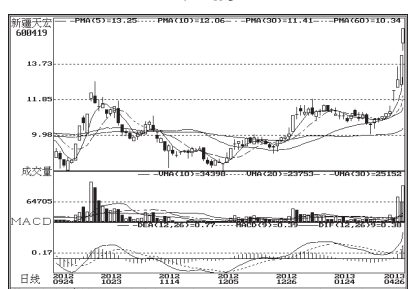
跌幅前10



宁波联合 600051:下跌幅道,观望

连续涨跌前10

连涨前10

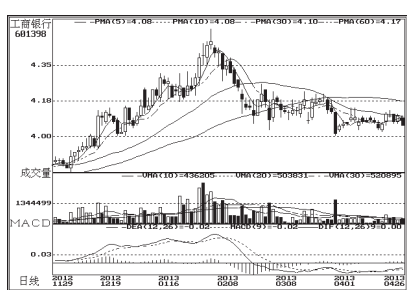


新疆天宏 600419:逼近压力区域,观望

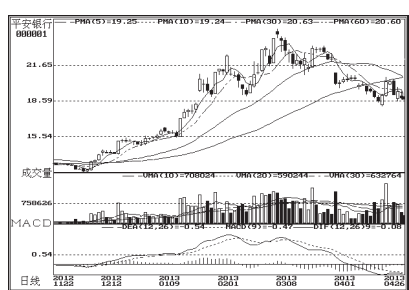
连跌前10



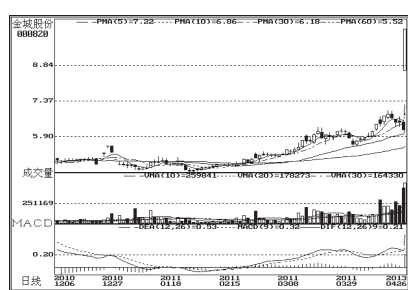
金发科技 600143:考验半年线支撑



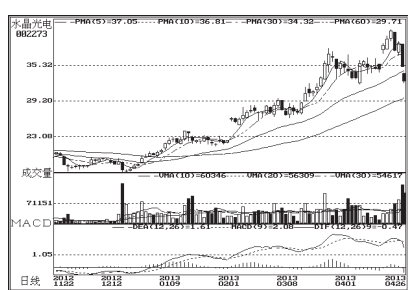
工商银行 601398:震荡格局未变



平安银行 000001:短线有强支撑



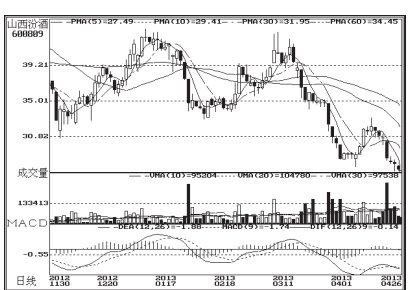
*ST金城 000820:复牌首日,待观察



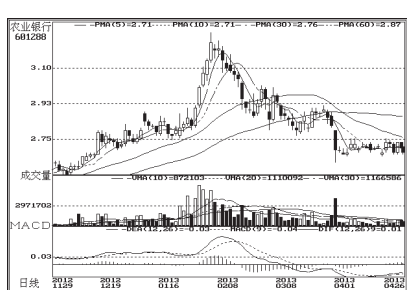
水晶光电 002273:短线弱势,回避



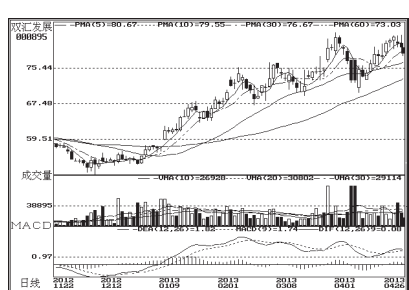
华润锦华 000810:后市待观察



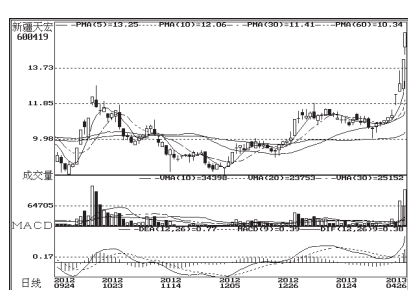
山西汾酒 600809:短线弱势,回避



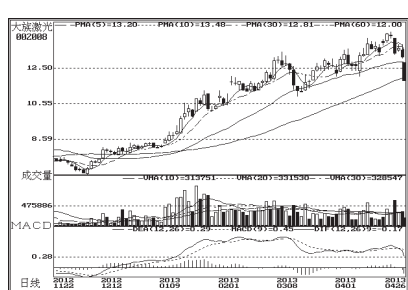
农业银行 601288:短线有强支撑



双汇发展 000895:继续持有



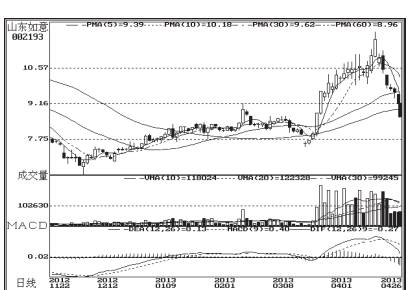
新疆天宏 600419:逼近压力区域,观望



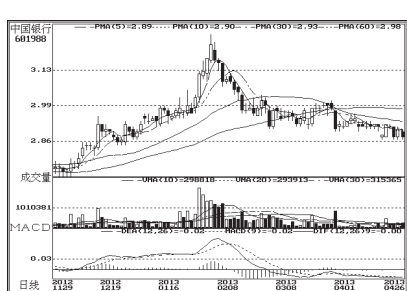
大族激光 002008:短线弱势,回避



丰华股份 600615:上升趋势中,持有



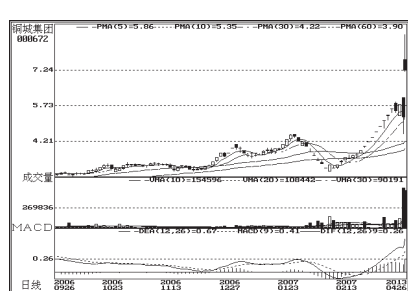
山东如意 002193:考验半年线支撑



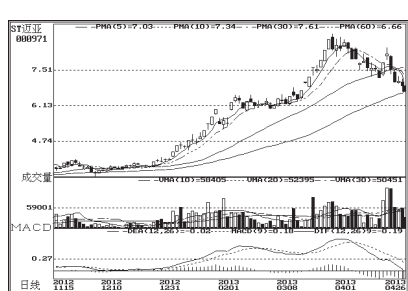
中国银行 601988:短线有强支撑



五粮液 000858:震荡格局未变



上峰水泥 000672:复牌首日,待观察



蓝鼎控股 000971:继续横盘震荡,观望



银之杰 800085:逼近压力区域,观望



金科股份 000656:下跌幅道,观望



中国石化 600028:下跌空间有限



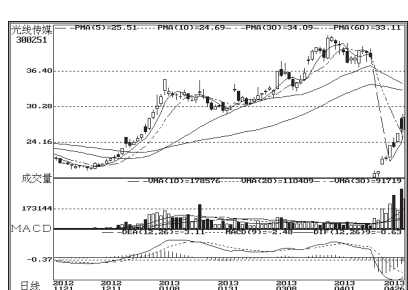
格力电器 000651:短线有强支撑



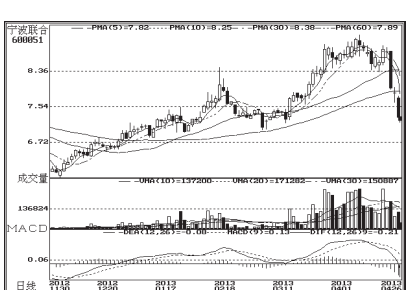
华润锦华 000810:后市待观察



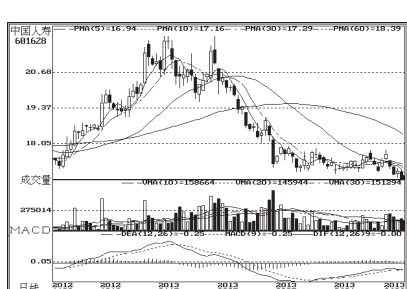
山东如意 002193:考验半年线支撑



光线传媒 800251:短期强势,持有



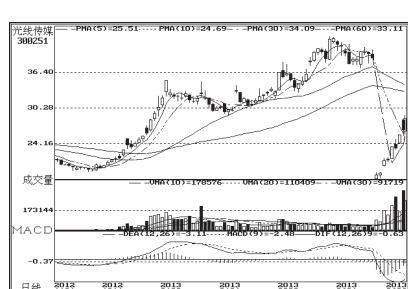
宁波联合 600051:下跌幅道,观望



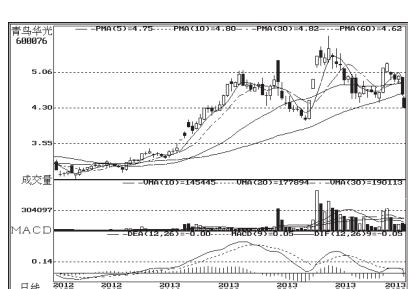
中国人寿 601628:横向震荡格局未变



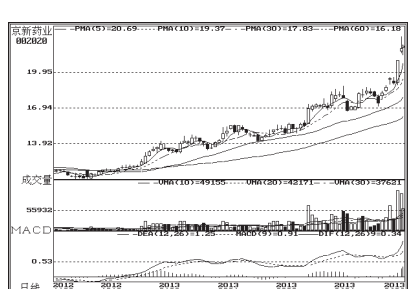
广发证券 000776:面临均线压力,观望



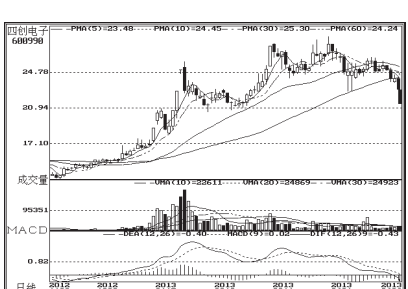
光线传媒 800251:短线强势,持有



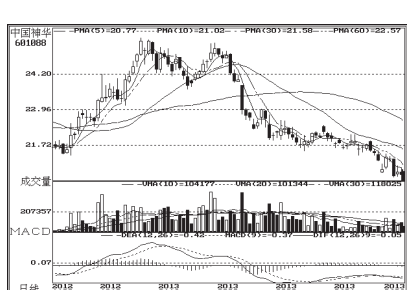
青岛华光 600076:继续横盘震荡,观望



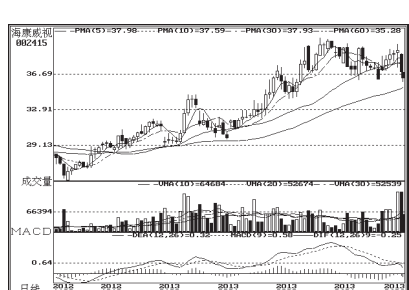
京新药业 002020:逼近压力区域,观望



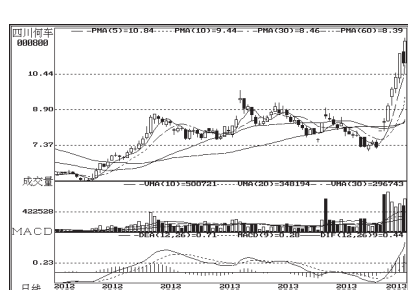
四创电子 600990:短线弱势,回避



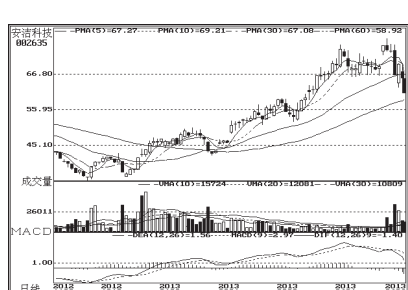
中国神华 601088:面临均线压力,观望



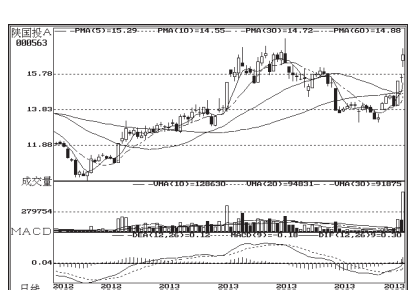
海康威视 002415:仍有下跌空间



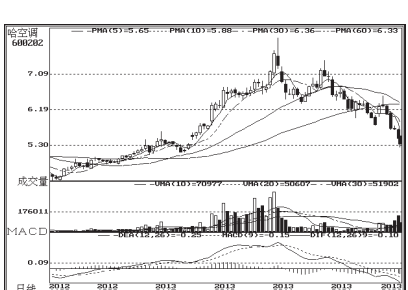
一汽轿车 000800:上升趋势中,持有



安洁科技 002635:继续横盘震荡,观望



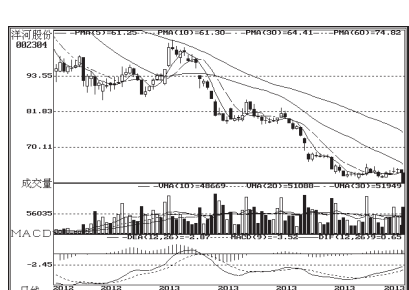
陕西国投 000563:短期强势,持有



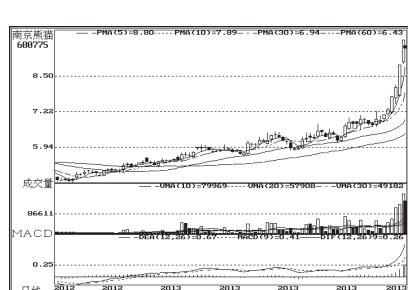
哈空调 600202:考验半年线支撑



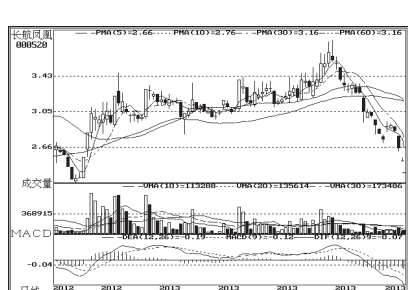
兴业银行 601166:震荡格局未变



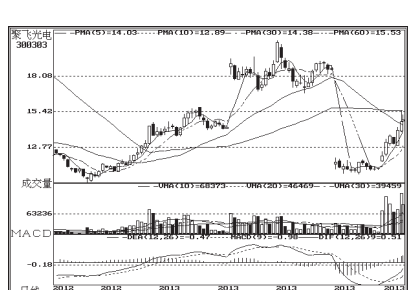
洋河股份 002304:短线弱势,观望



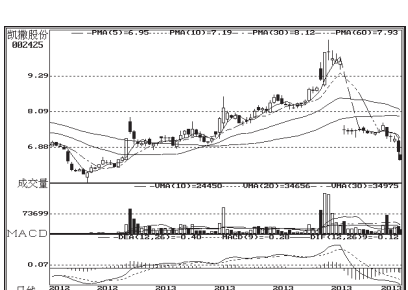
南京熊猫 600775:逼近压力区域,观望



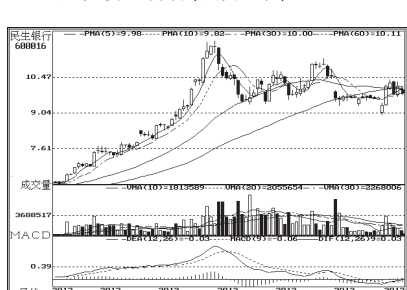
*ST凤凰 000520:下跌幅道,观望



聚飞光电 800303:逼近压力区域,观望



凯撒股份 002425:短线有强支撑



民生银行 600016:震荡格局未变



云南白药 000538:继续持有



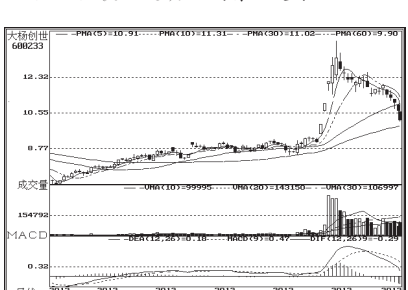
美锦能源 000723:逼近压力区域,观望



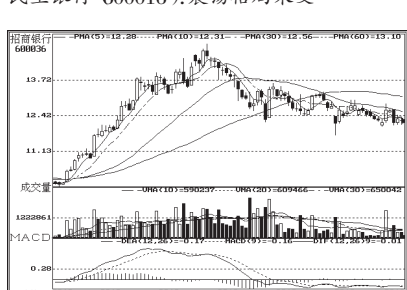
百洋股份 002696:下跌幅道,观望



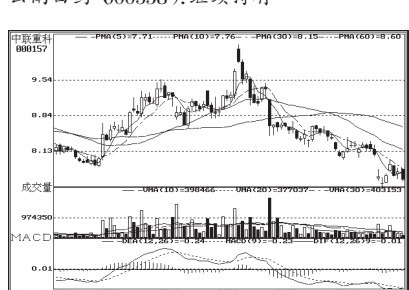
登海种业 002041:高位放巨量,谨慎



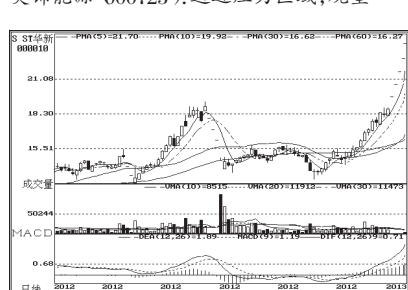
大杨创世 600233:下跌幅道,观望



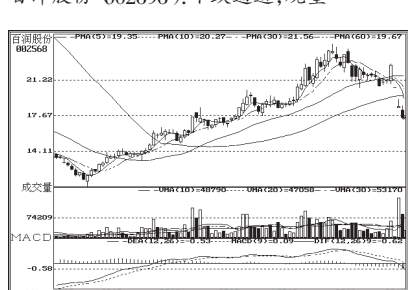
招商银行 600036:震荡格局未变



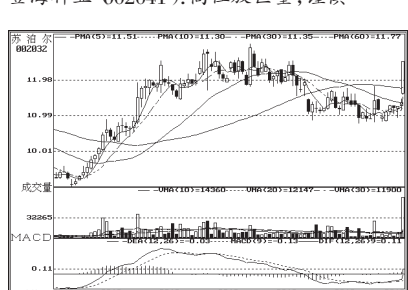
中联重科 000157:逢低关注



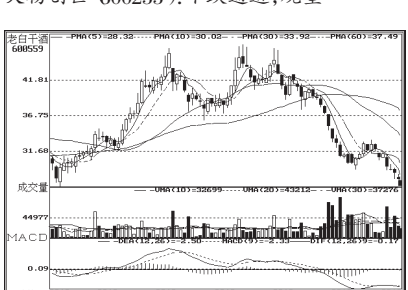
SST华新 000010:后市待观察



百润股份 002568:考验半年线支撑



苏泊尔 002032:上升趋势中,持有



老白干酒 600559:短线弱势,回避