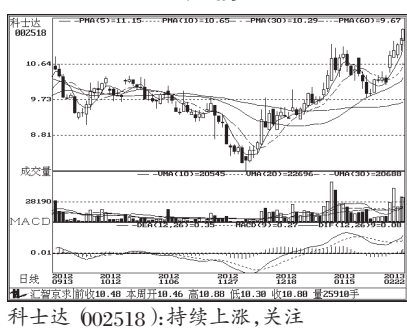


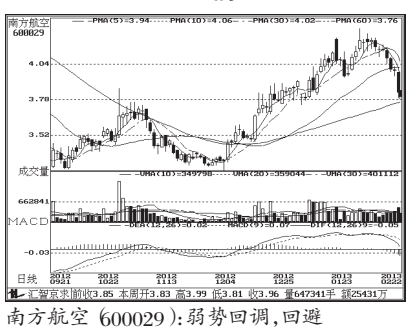
## 连续涨跌前10

连涨前10



科士达 (002518):持续上涨,关注

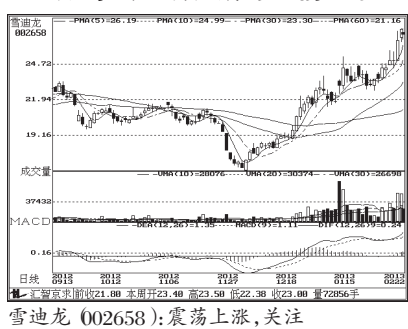
连跌前10



南方航空 600029):弱势回调,回避

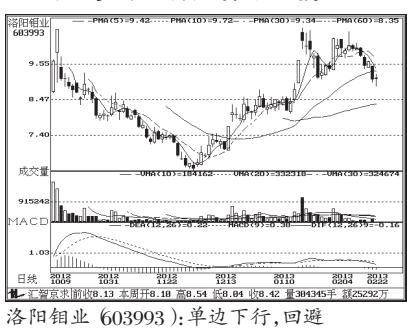
## 股东人数增减前10

股东人数减少前10



雪迪龙 (002658):震荡上涨,关注

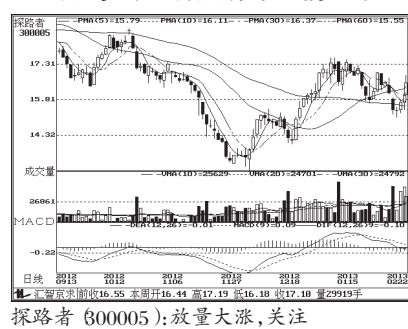
股东人数增加前10



洛阳钼业 603993):单边下行,回避

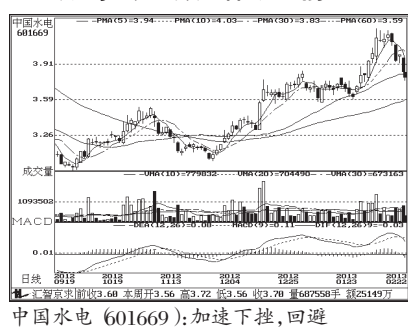
## 基金重仓股股东人数增减前10

股东人数减少前10

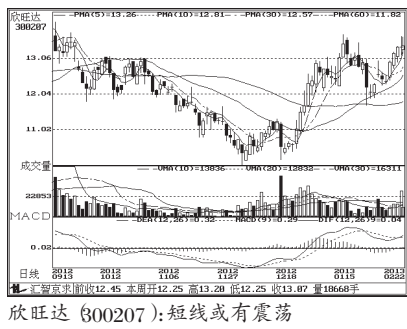


探路者 (800005):放量大涨,关注

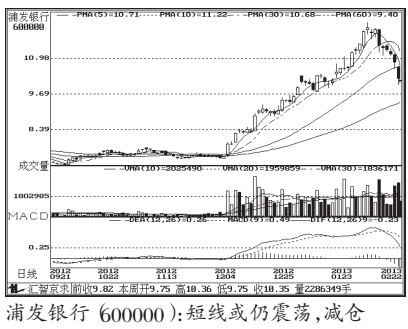
股东人数增加前10



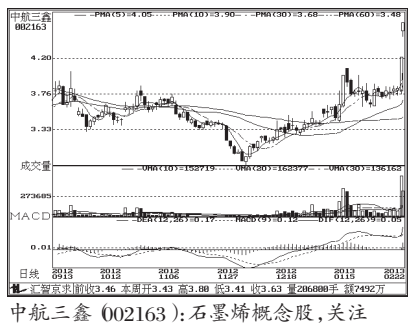
中国水电 601669):加速下挫,回避



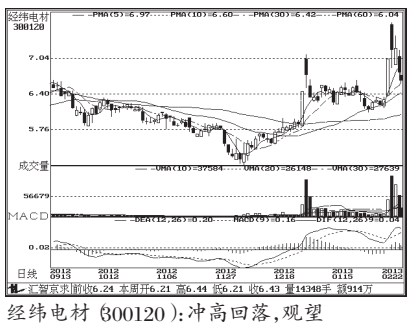
欣旺达 (800207):短线或有震荡



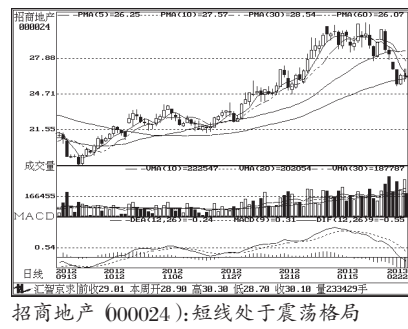
浦发银行 (600000):短线或仍震荡,减仓



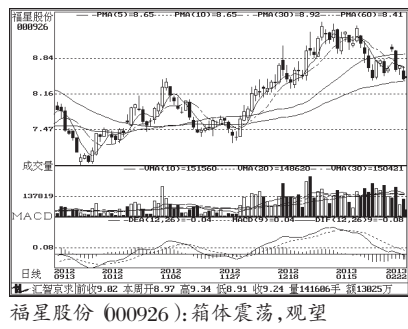
中航三鑫 (002163):石墨烯概念股,关注



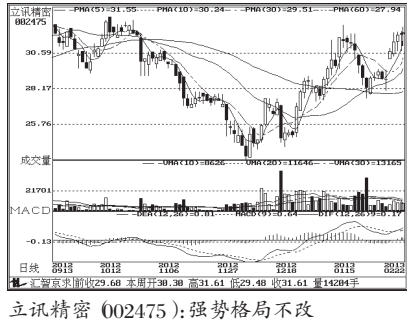
经纬电材 (800120):冲高回落,观望



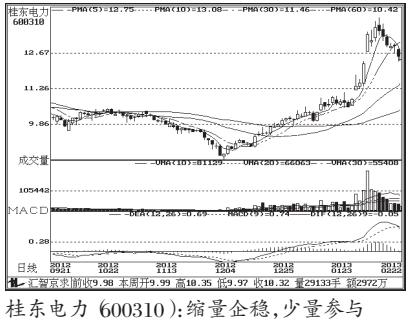
招商地产 (000024):短线处于震荡格局



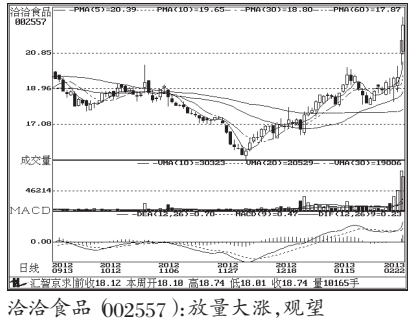
福星股份 (000926):箱体震荡,观望



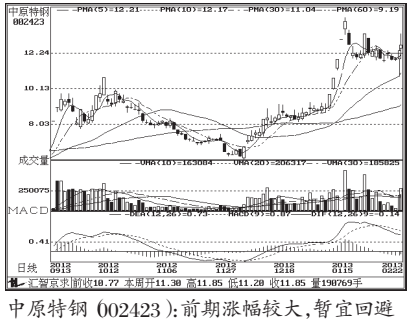
立讯精密 (002475):强势格局不改



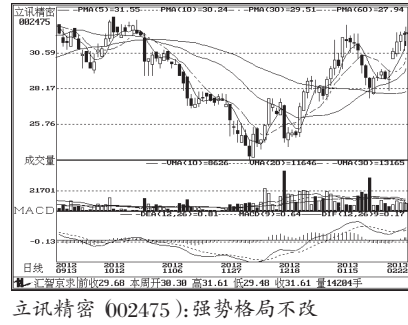
桂东电力 (600310):缩量企稳,少量参与



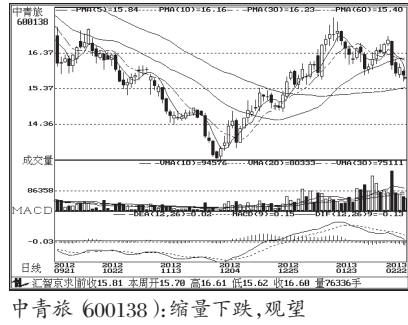
洽洽食品 (002557):放量大涨,观望



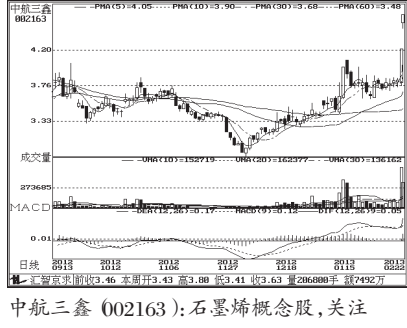
中原特钢 (002423):前期涨幅较大,暂宜回避



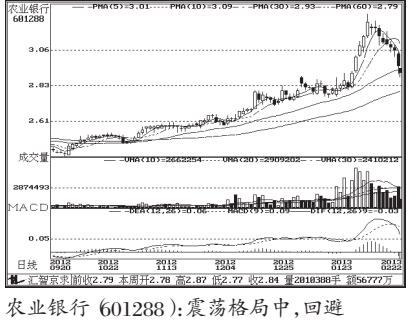
立讯精密 (002475):强势格局不改



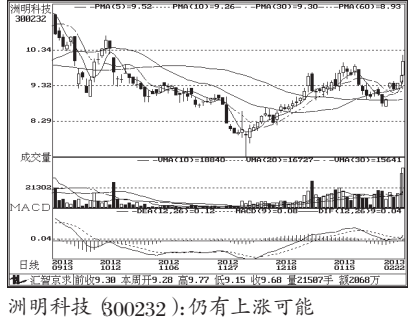
中青旅 (600138):缩量下跌,观望



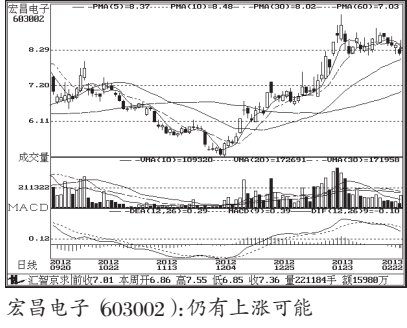
中航三鑫 (002163):石墨烯概念股,关注



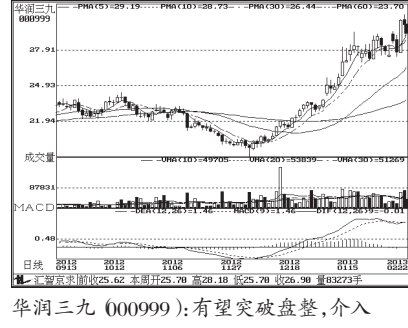
农业银行 (601288):震荡格局中,回避



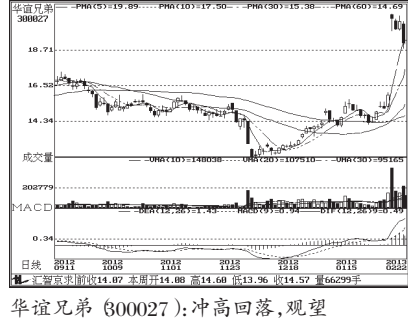
洲明科技 (800232):仍有上涨可能



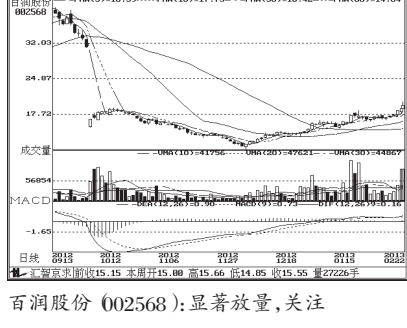
宏昌电子 (603002):仍有上涨可能



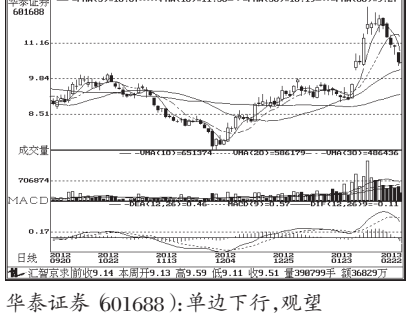
华润三九 (000999):有望突破盘整,介入



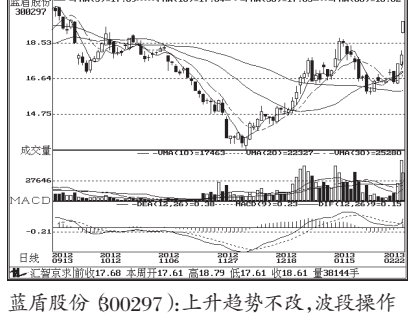
华谊兄弟 (800027):冲高回落,观望



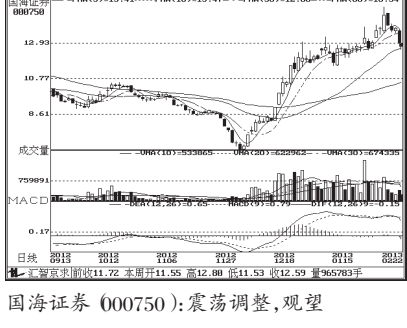
百润股份 (002568):显著放量,关注



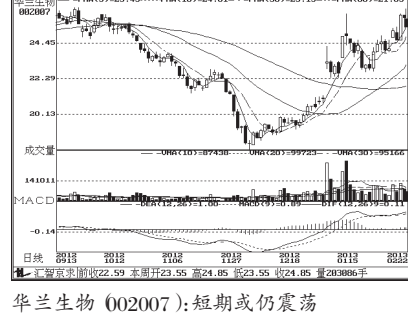
华泰证券 (601688):单边下行,观望



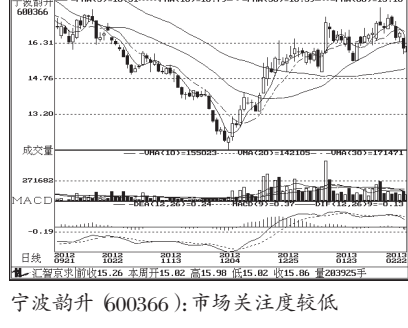
蓝盾股份 (800297):上升趋势不改,波段操作



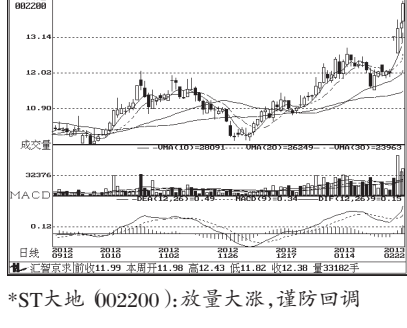
国海证券 (000750):震荡调整,观望



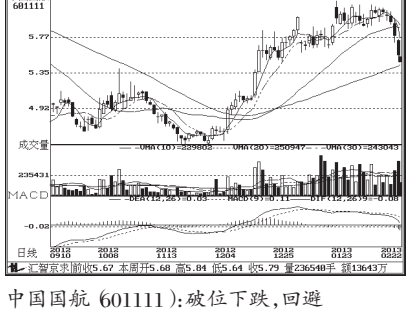
华兰生物 (002007):短期或仍震荡



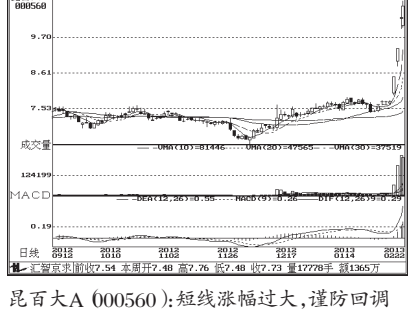
宁波韵升 (600366):市场关注度较低



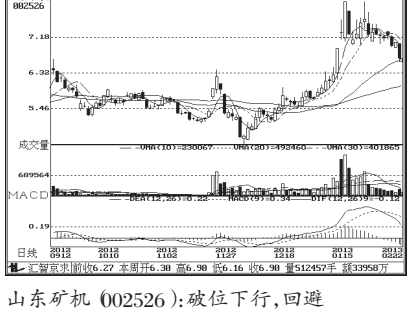
\*ST大地 (002200):放量大涨,谨防回调



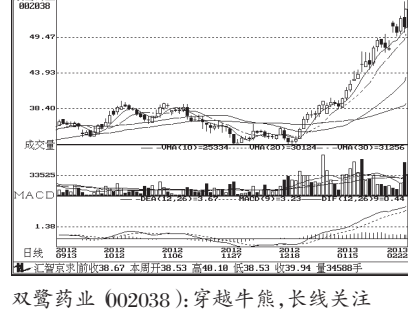
中国国航 (601111):破位下跌,回避



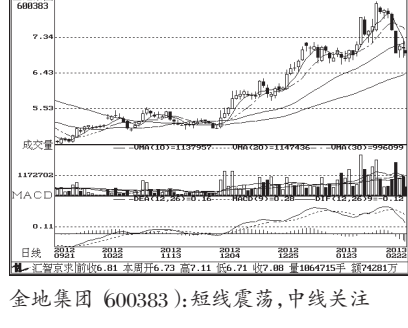
昆百大A (000560):短线涨幅过大,谨防回调



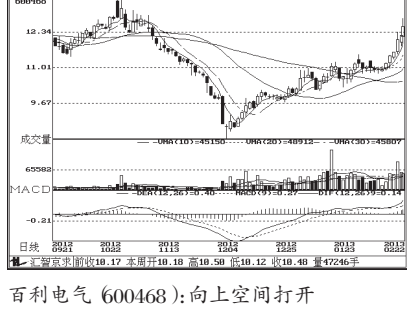
山东矿机 (002526):破位下行,回避



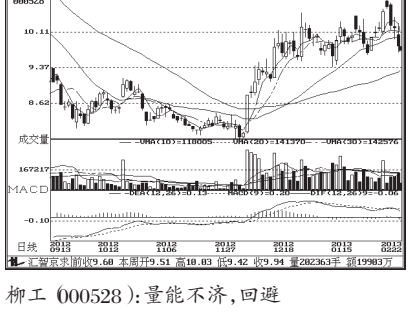
双鹭药业 (002038):穿越牛熊,长线关注



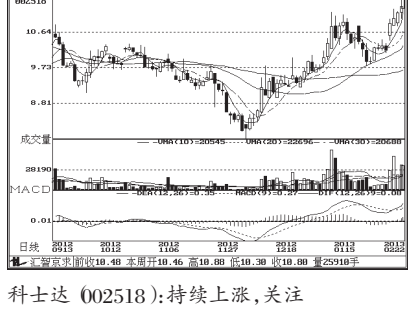
金地集团 (600383):短线震荡,中线关注



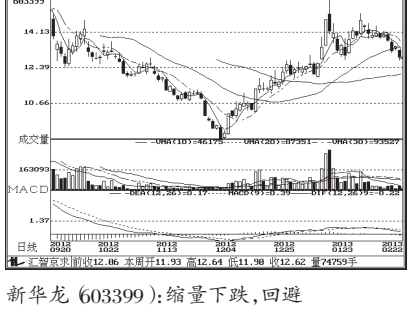
百利电气 (600468):向上空间打开



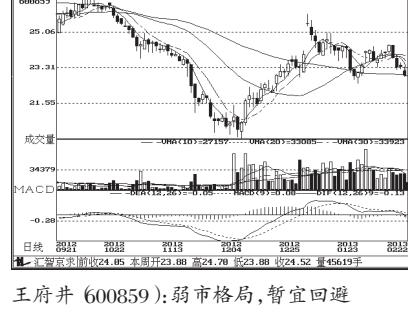
柳工 (000528):量能不齐,回避



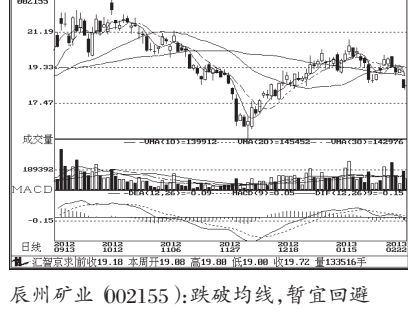
科士达 (002518):持续上涨,关注



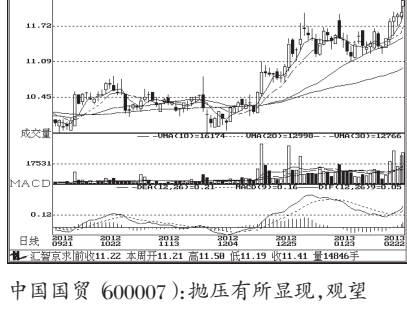
新华龙 (603399):缩量下跌,回避



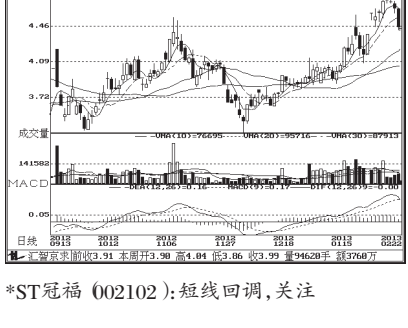
王府井 (600859):弱市格局,暂宜回避



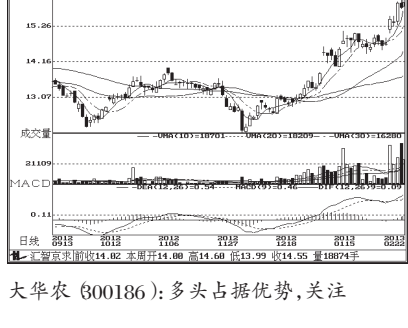
辰州矿业 (002155):跌破均线,暂宜回避



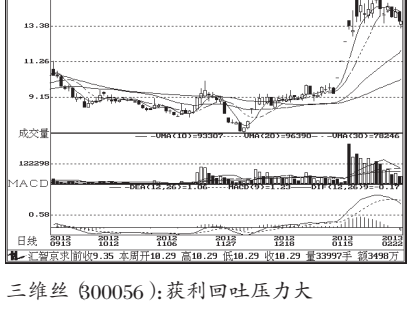
中国国贸 (600007):抛压有所显现,观望



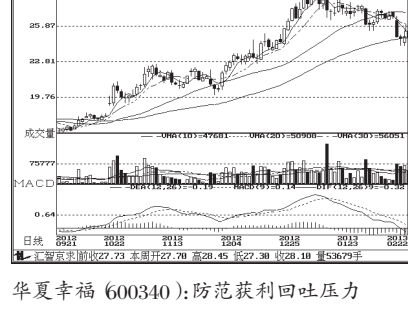
\*ST冠福 (002102):短线回调,关注



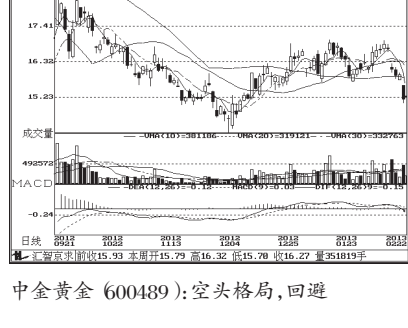
大华农 (800186):多头占据优势,关注



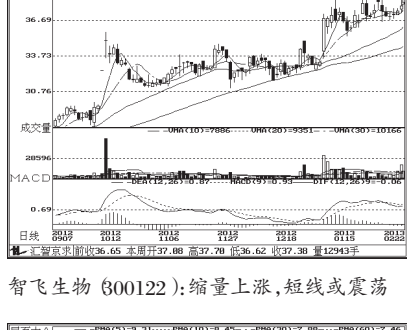
三维丝 (800056):获利回吐压力大



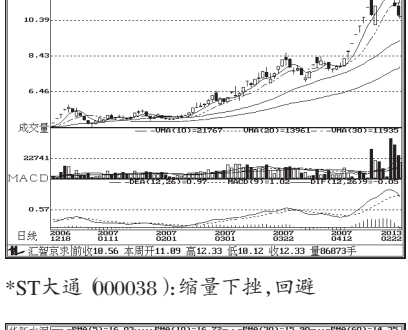
华夏幸福 (600340):防范获利回吐压力



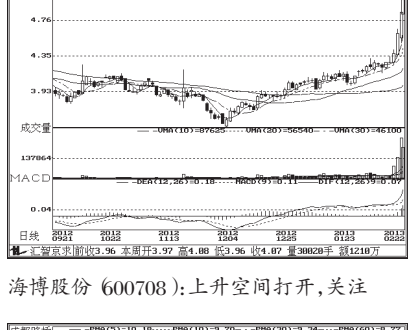
中金黄金 (600489):空头格局,回避



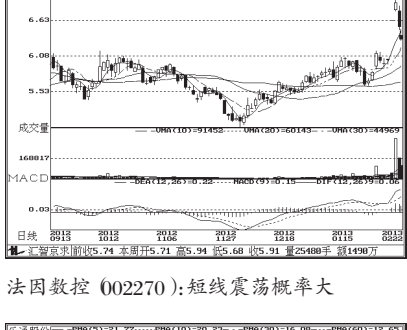
智飞生物 (800122):缩量上涨,短线或震荡



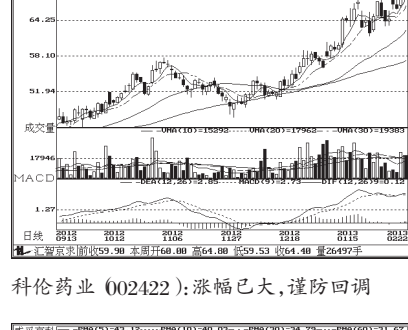
\*ST大通 (000038):缩量下挫,回避



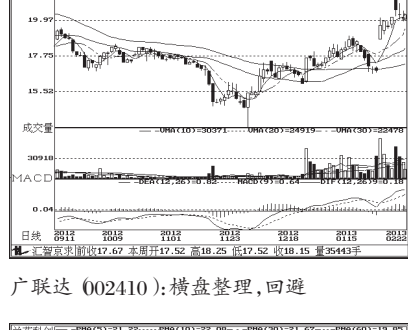
海博股份 (600708):上升空间打开,关注



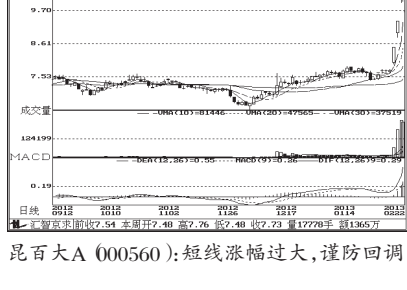
法因数控 (002270):短线震荡概率大



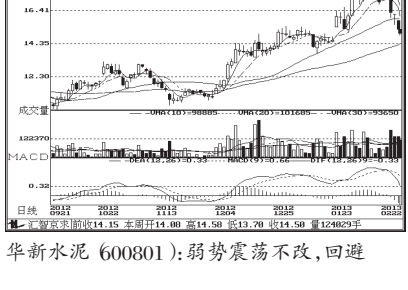
科伦药业 (002422):涨幅已大,谨防回调



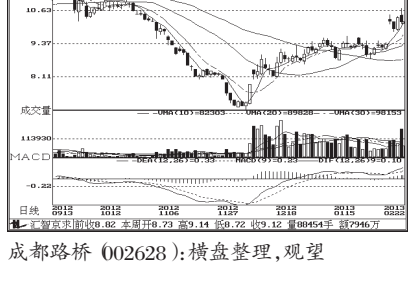
广联达 (002410):横盘整理,回避



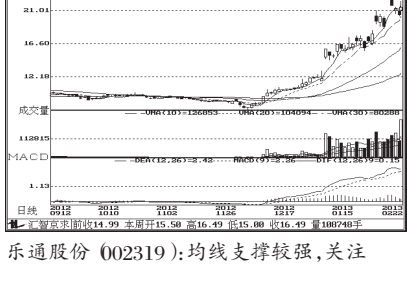
昆百大A (000560):短线涨幅过大,谨防回调



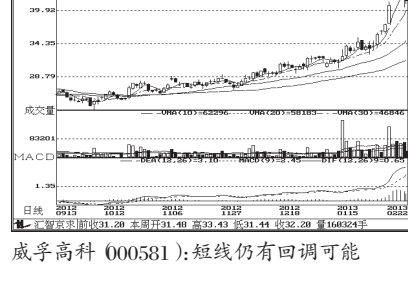
华新水泥 (600801):弱势震荡不改,回避



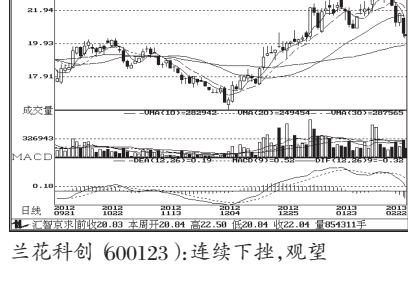
成都路桥 (002628):横盘整理,观望



乐通股份 (002319):均线支撑较强,关注



威孚高科 (000581):短线仍有回调可能



兰花科创 (600123):连续下挫,观望