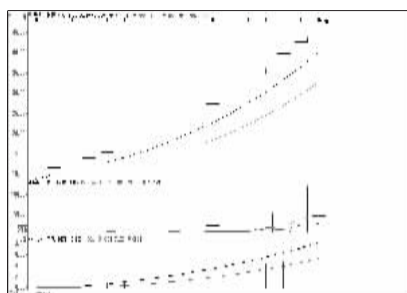
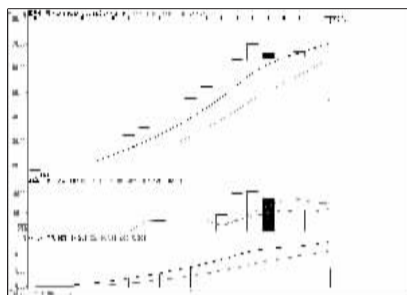


股东人数增减前10

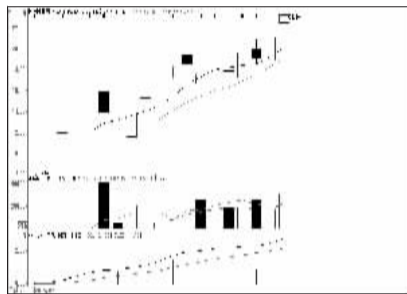
股东人数减少前10



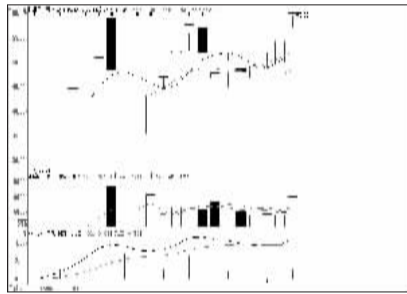
光力科技 (800480): 涨幅可观, 落袋为安



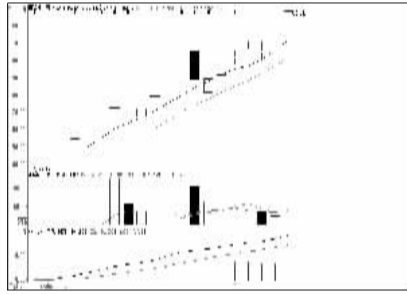
真视通 (002771): 获利盘较大, 逐步止盈



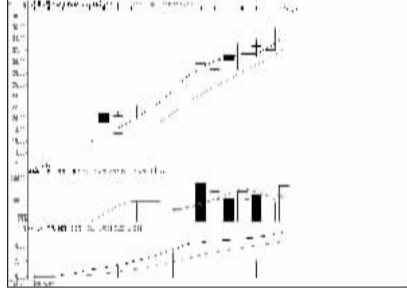
科迪乳业 (002770): 买盘强劲, 逢低介入



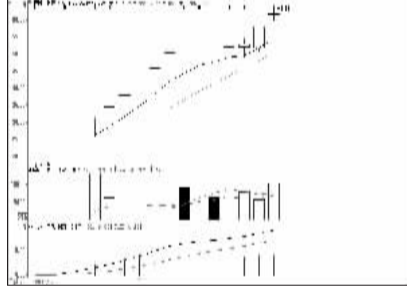
柏堡龙 (002776): 多头市道, 看高一线



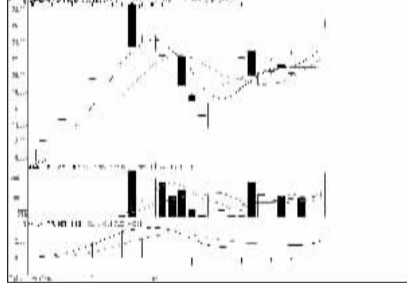
普通股 (002769): 涨幅可观, 逐步兑现



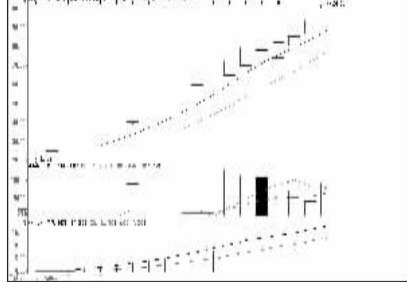
东杰智能 (800486): 涨幅可观, 持股不追



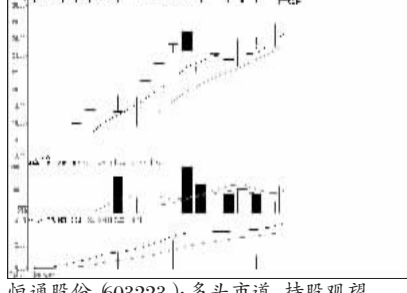
蓝晓科技 (800487): 攻势趋弱, 落袋为安



蓝黛传动 (002765): 买盘强大, 看高一线

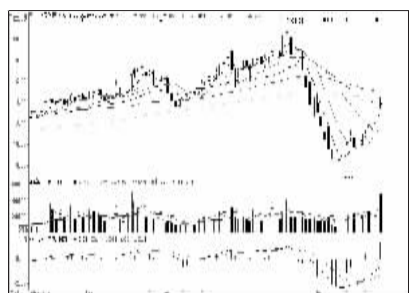


万孚生物 (800482): 涨幅可观, 落袋为安

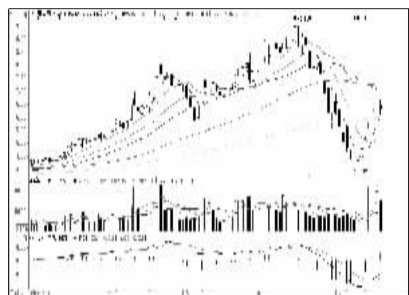


恒通股份 (603223): 多头市道, 持股观望

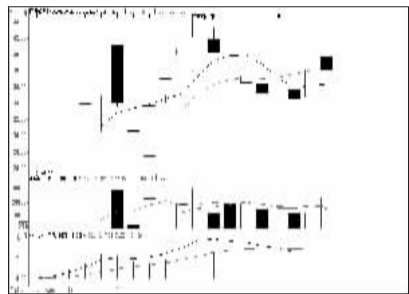
股东人数增加前10



一拖股份 (601038): 均线压制, 短线离场



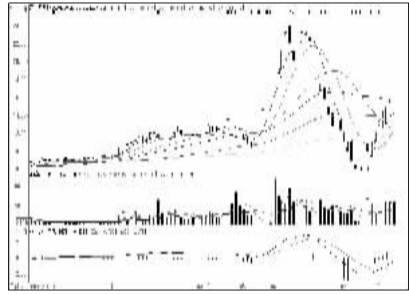
腾达建设 (600512): 短线趋弱, 离场观望



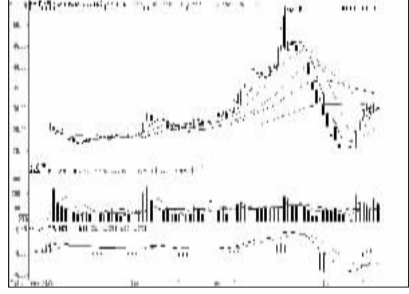
红蜻蜓 (603116): 宽幅震荡, 观望为主



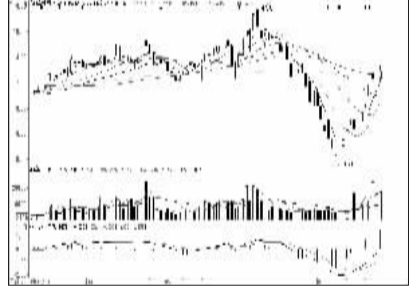
中航黑豹 (600760): 强势格局, 持股不追



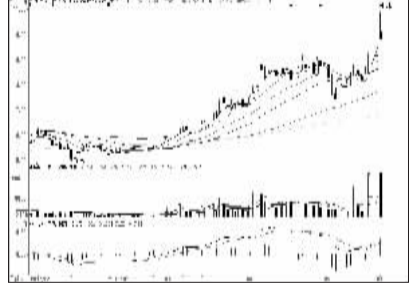
匹凸匹 (600696): 反弹近尾声, 减仓



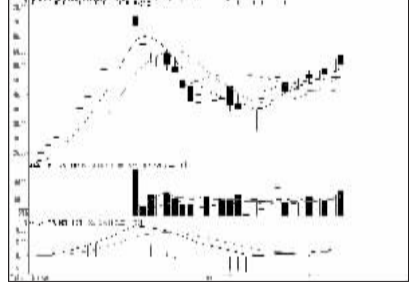
杭电股份 (603618): 短线趋弱, 适度减仓



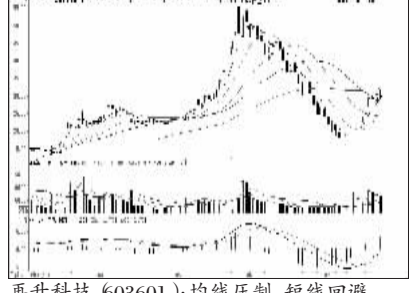
晋西车轴 (600495): 逼近压力区, 减仓



中孚实业 (600595): 高位震荡, 出局观望



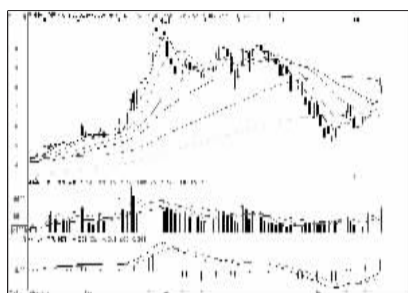
永创智能 (603901): 上攻乏力, 观望为主



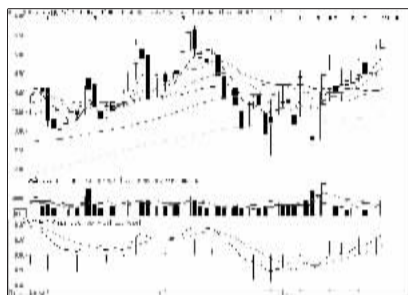
再升科技 (603601): 均线压制, 短线回避

一周资金流入流出金额前10

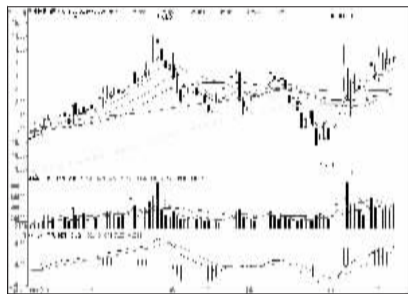
资金流入金额前10



中国中冶 (601618): 震荡向上, 谨慎持股



万科A (000002): 多头格局, 持股为主



中国石油 (601857): 横盘态势, 观望为宜



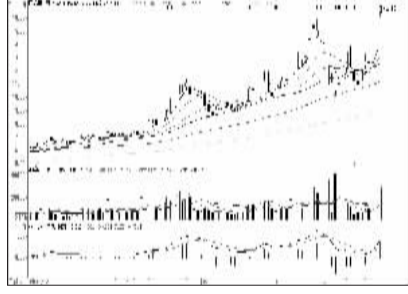
海油工程 (600583): 挑战均线, 持股为主



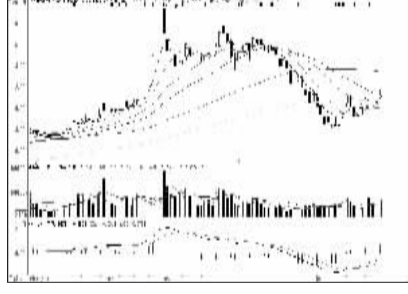
中国铝业 (601600): 承压半年线, 暂回避



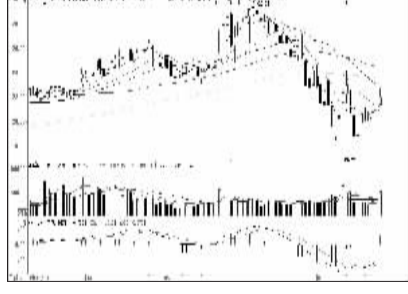
中煤能源 (601898): 承压半年线, 暂回避



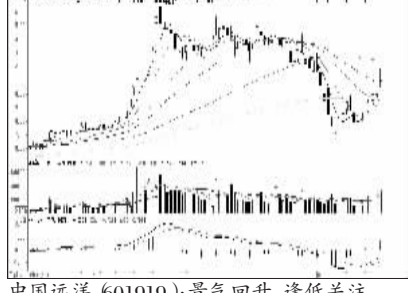
际华集团 (601718): 再创新高, 逢低跟进



中国电建 (601669): 盘整蓄势, 逢低关注



万华化学 (600309): 震荡筑底, 适当布局

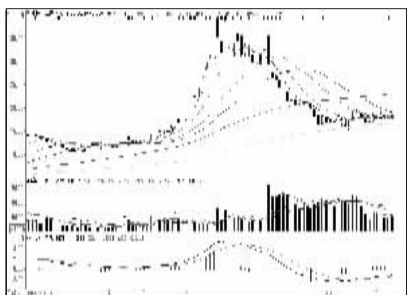


中国远洋 (601919): 景气回升, 逢低关注

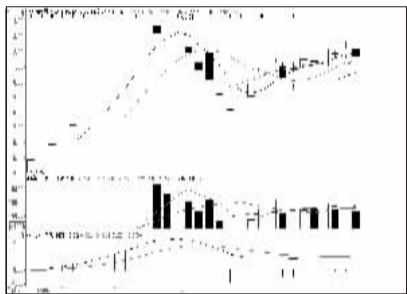
资金流出金额前10



中国重工 (601989): 短线休整, 观望为主



中国中车 (601766): 横盘运行, 观望为主



中国核电 (601985): 横盘整理, 观望



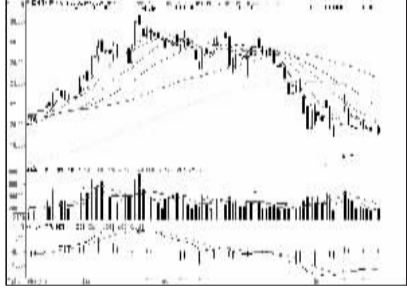
中信证券 (600030): 弱势格局, 谨慎观望



中国平安 (601318): 短线难有突破, 观望



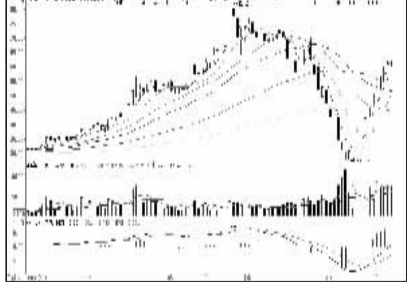
国投新集 (601918): 反弹近尾声, 减仓



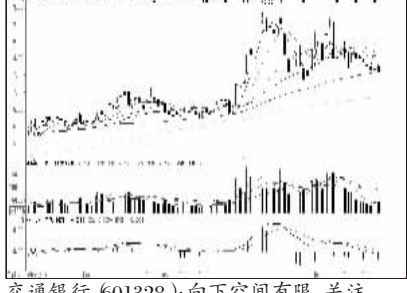
海通证券 (600837): 或将考验年线支撑



恒生电子 (600570): 反弹乏力, 出局



中航动力 (600893): 短线涨幅可观, 减仓



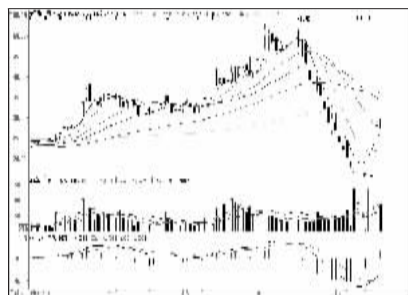
交通银行 (601328): 向下空间有限, 关注

周成交金额

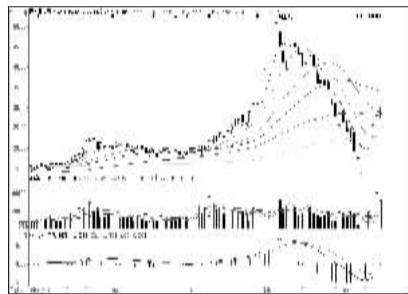
成交突增前10



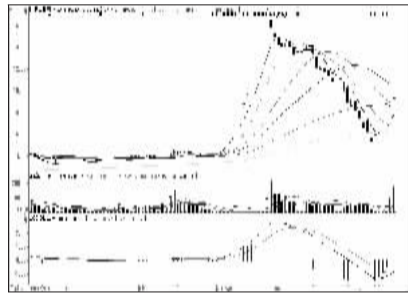
天宝股份 (002220): 半年线附近或现震荡



安科瑞 (800286): 或在年线附近横盘整理



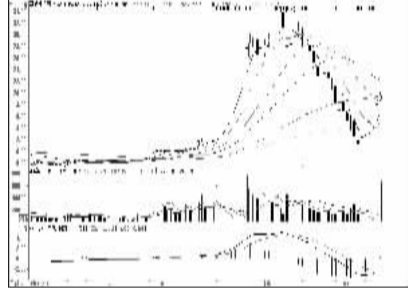
赛为智能 (600044): 反弹近尾声, 短线减仓



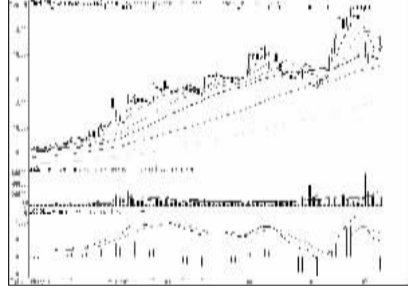
世纪星源 (000005): 连续反弹, 持股不追



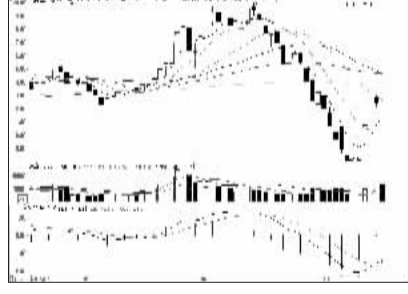
赢时胜 (800377): 抛压沉重, 回避为宜



奥维通信 (002231): 反弹多日, 持股不追



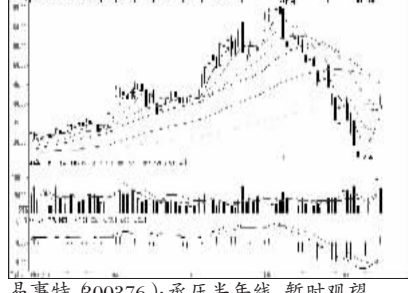
汇源通信 (000586): 买气不足, 不宜介入



丰原药业 (000153): 进入压力区, 减仓

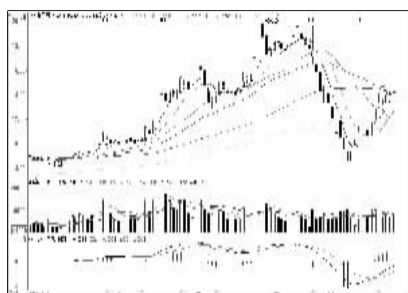


三特索道 (002159): 高位震荡, 不宜追涨

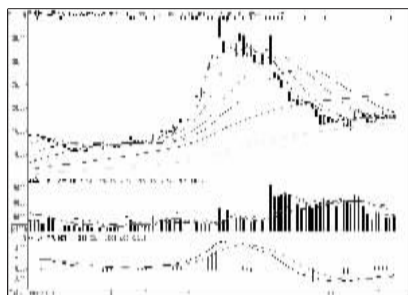


易事特 (800376): 承压半年线, 暂时观望

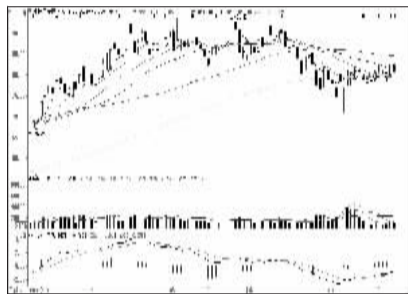
成交金额前8



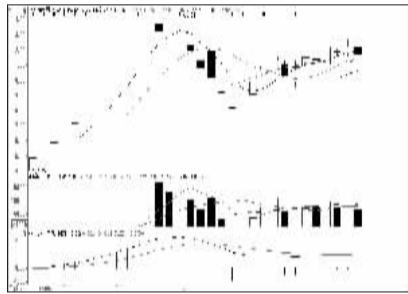
中国重工 (601989): 短线休整, 观望为主



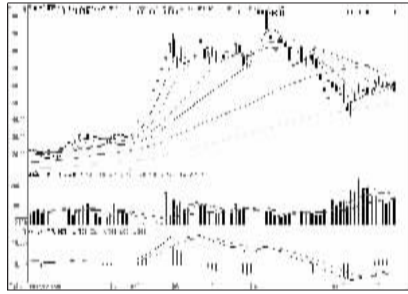
中国中车 (601766): 横盘运行, 观望为主



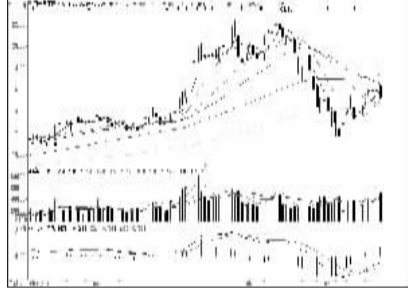
中国平安 (601318): 短线难突破, 观望



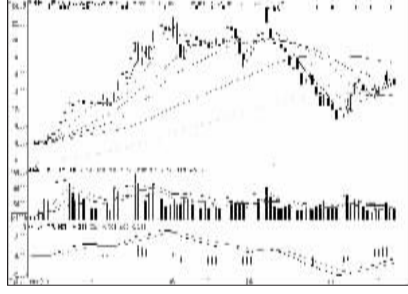
中国核电 (601985): 横盘整理, 观望



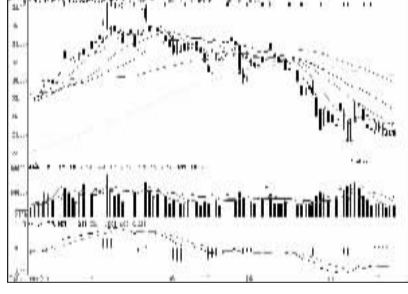
东方财富 (800059): 短线谨慎, 中线关注



苏宁云商 (002024): 买盘不济, 短线离场



中国中铁 (601390): 震荡格局, 观望为宜



中信证券 (600030): 弱势格局, 谨慎观望



看股票 买彩票 全搞定 大智慧手机版 d.wapgw.cn