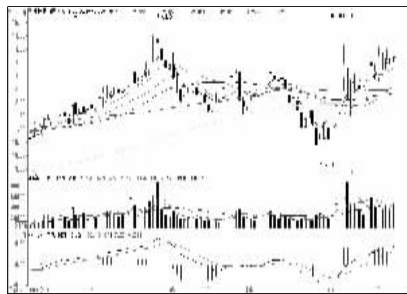


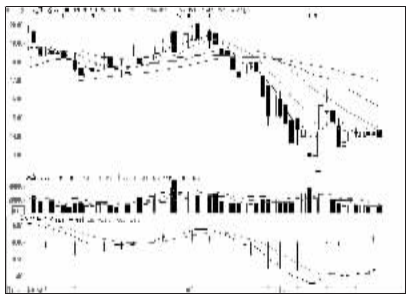
沪深10大权重股

沪市10大权重

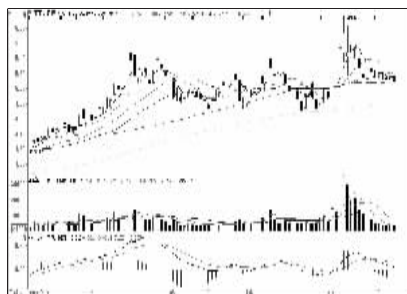


中国石油 (601857):横盘态势,观望为宜

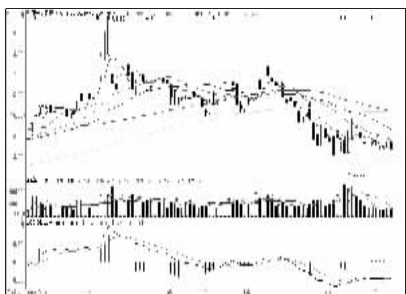
深市10大权重



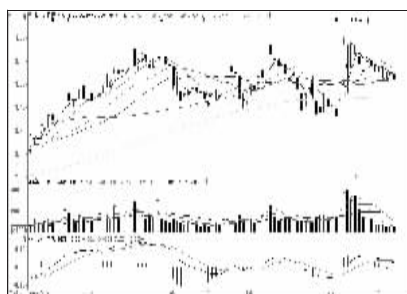
中万宏源 (000166):均线压制,谨慎为宜



工商银行 (601398):短线风险不大,持股



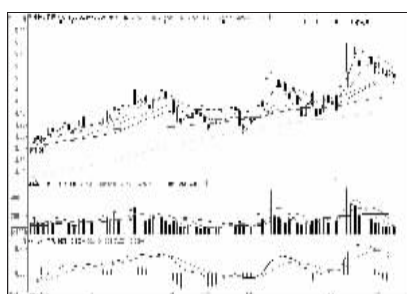
平安银行 (000001):上下两难,观望为主



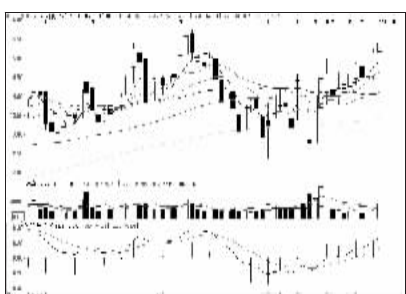
农业银行 (601288):跌破半年线,减仓



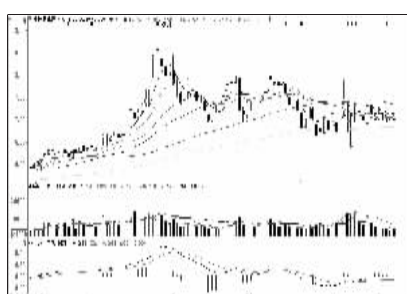
国信证券 (002736):欲振乏力,短期谨慎



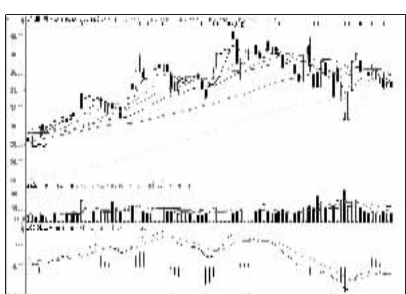
中国银行 (601983):均线支持较强,持股



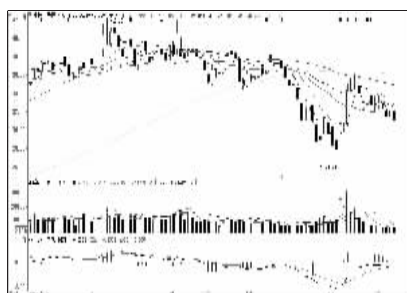
万科A (000002):多头格局,持股为主



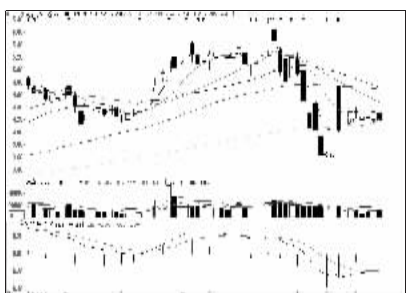
中国石化 (600028):横盘态势,安全品种



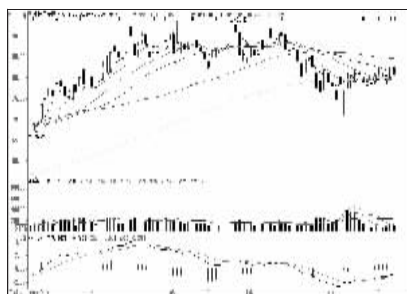
美的集团 (000333):回踩半年线,持股观望



中国人寿 (601628):上方压力大,观望



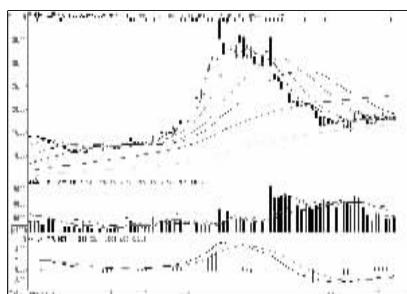
京东方A (000725):仍需整固,谨慎持股



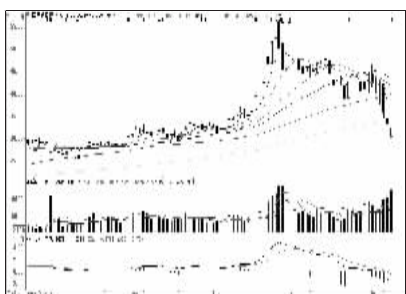
中国平安 (601318):短线难有突破,观望



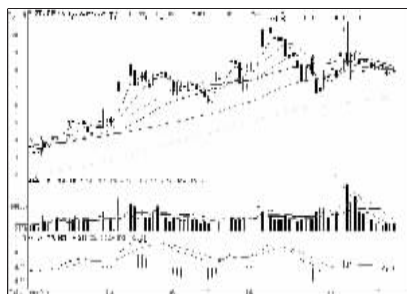
格力电器 (000651):业绩支撑,持股为宜



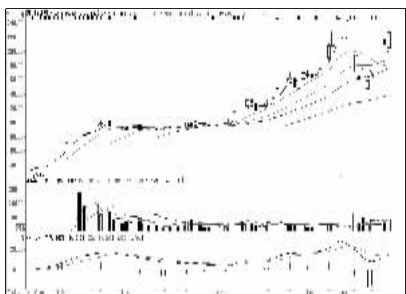
中国中车 (601766):横盘运行,观望为主



海康威视 (002415):持续停牌中



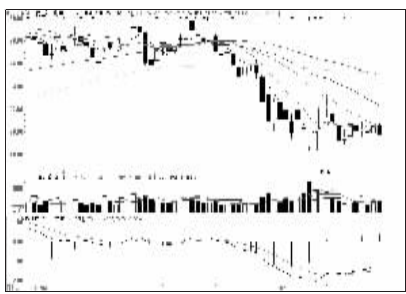
招商证券 (600036):窄幅震荡,持股观望



万达院线 (002739):反弹可观,适度减仓



中国神华 (601088):量能不足,观望为宜



广发证券 (000776):窄幅整理,谨慎观望

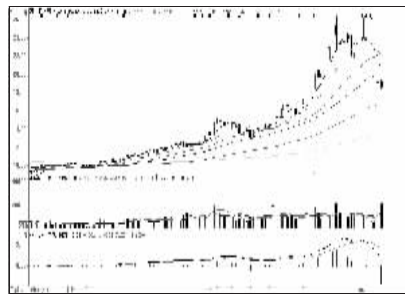
周涨跌幅前10

涨幅前10

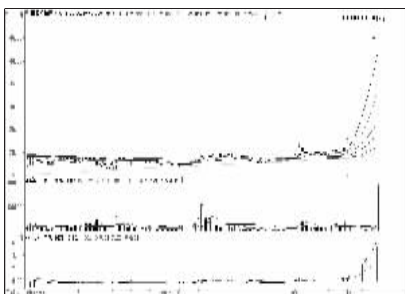


花园生物 (600401):逼近压力区,谨慎持股

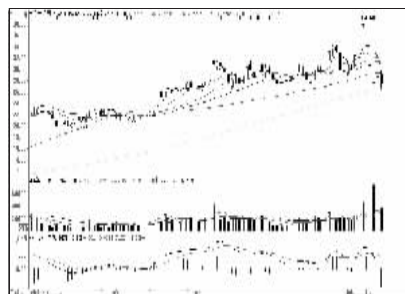
跌幅前10



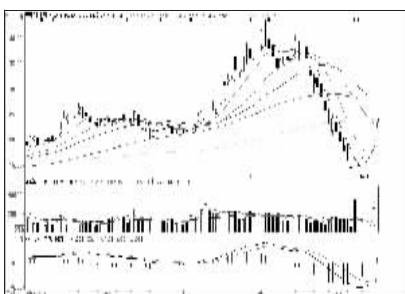
万顺股份 (600057):短期走弱,反弹减仓



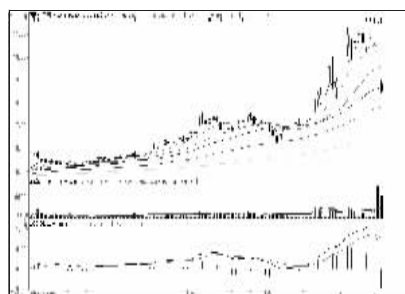
黄海机械 (002680):强势上攻,持股观望



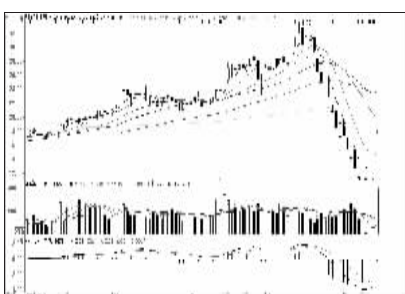
国投安信 (600061):仍有向下空间,回避



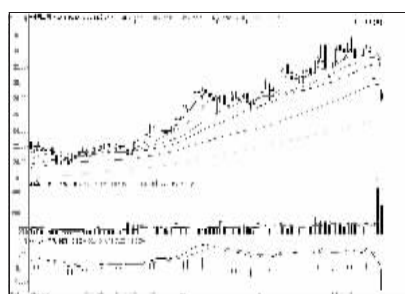
天玑科技 (800245):压力渐增,逐步兑现



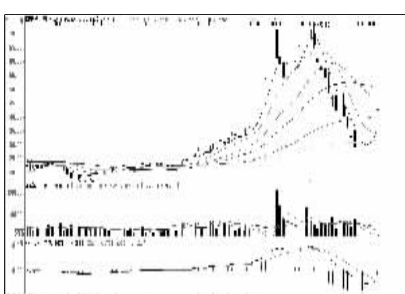
南风化工 (000737):放量下挫,反弹出局



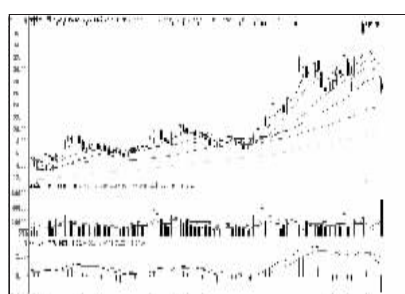
新纶科技 (002341):强势反弹,持股为主



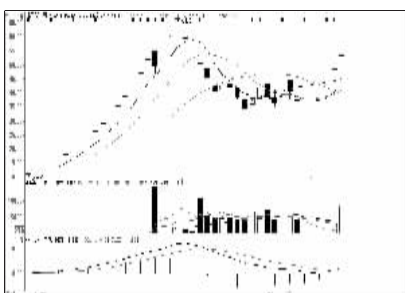
国机汽车 (600335):抛盘沉重,逢高减仓



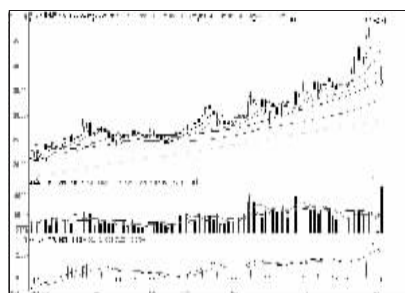
梅泰诺 (600038):强势上攻,持股为主



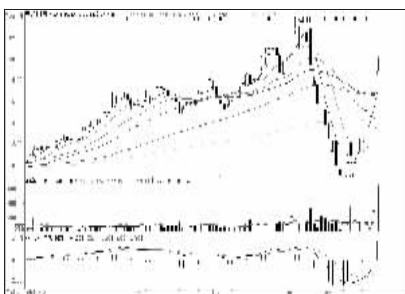
安居宝 (800155):仍有调整空间,减仓



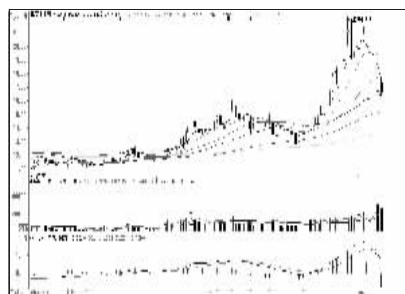
浙江金科 (800459):连续上涨,持股观望



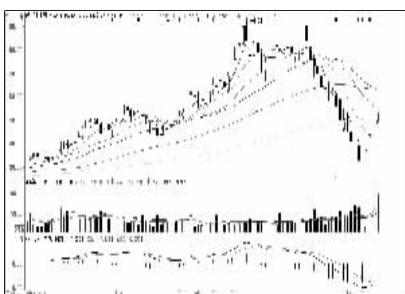
华胜天成 (600410):获利盘巨大,反弹离场



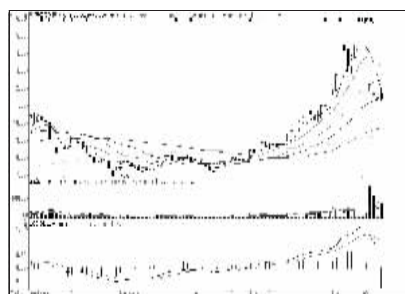
鹿港科技 (601599):获利可观,适时兑现



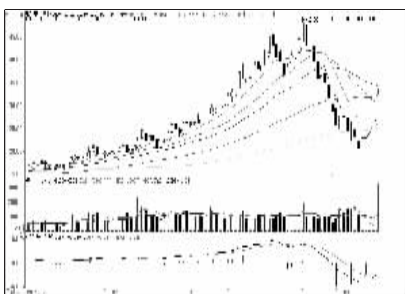
海联科技 (600084):有望企稳,谨慎持股



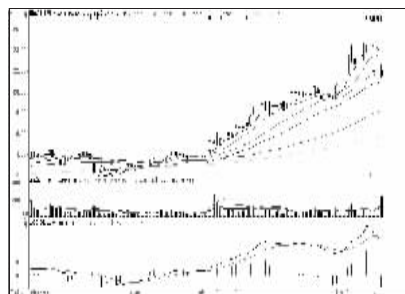
光一科技 (800356):放量上涨,看高一线



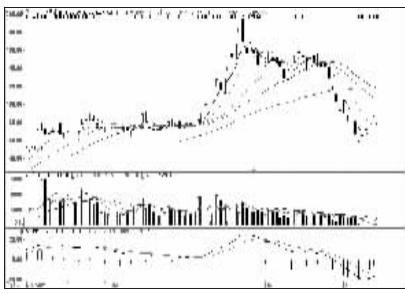
万泽股份 (000534):难言止跌,逢高减仓



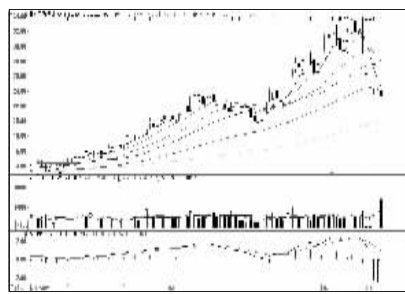
凯利泰 (600326):压力渐增,逐步兑现



模塑科技 (000700):或现震荡,观望为主



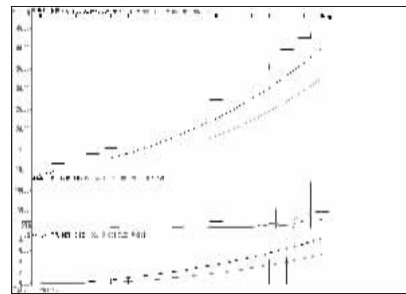
中文在线 (800364):卖方惜售,持股为主



亚厦股份 (002375):半年线支撑较强

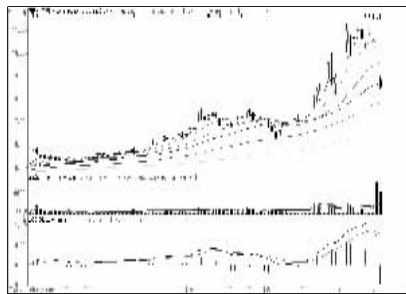
连续涨跌前10

连涨前10

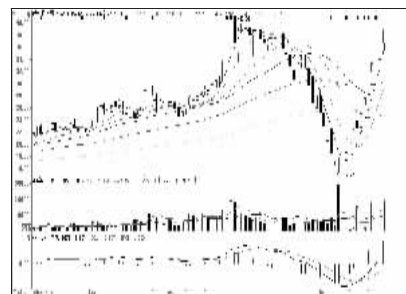


光力科技 (800480):涨幅可观,落袋为安

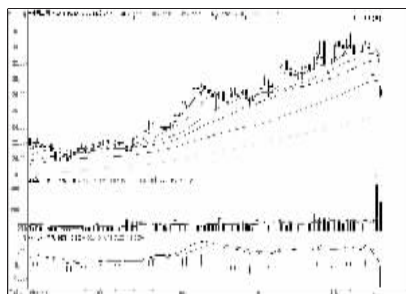
连跌前10



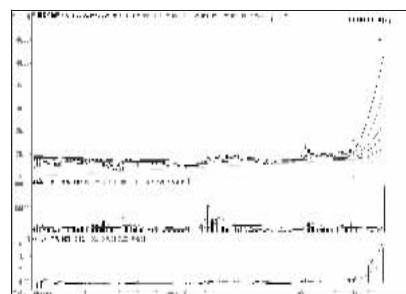
南风化工 (000737):放量下挫,反弹出局



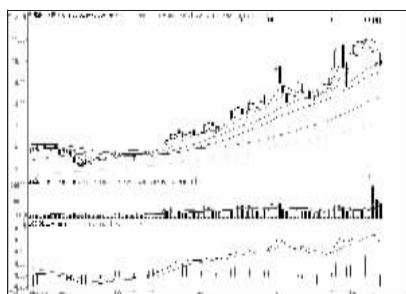
光电股份 (600184):攻势趋弱,减仓观望



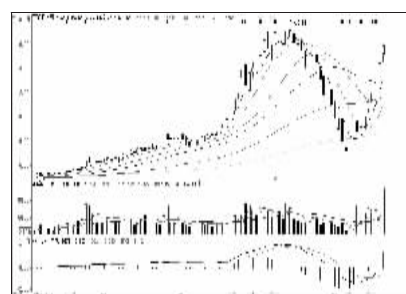
国机汽车 (600335):抛盘沉重,逢高减仓



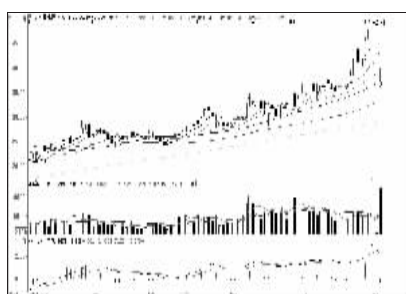
黄海机械 (002680):强势上攻,持股观望



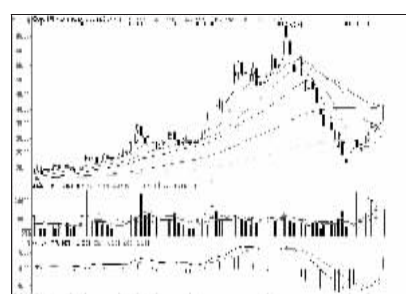
粤电力A (000539):跌势未尽,减仓观望



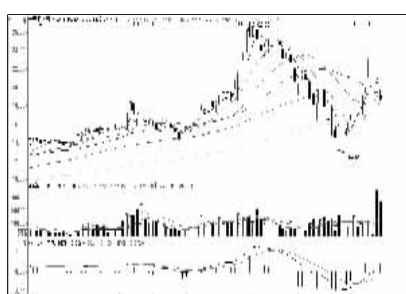
亚星锚链 (601890):升势强劲,持股为主



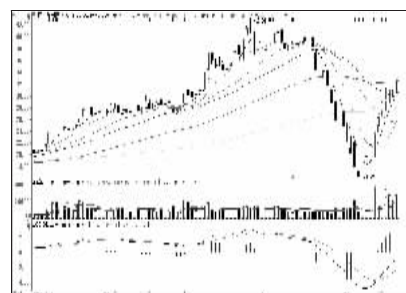
华胜天成 (600410):获利盘巨大,反弹离场



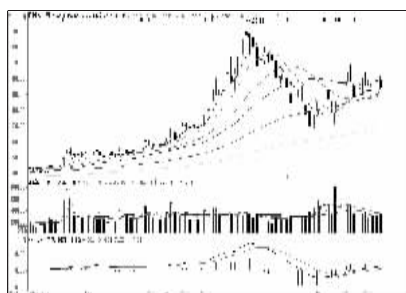
超图软件 (800036):60日均线压力较大



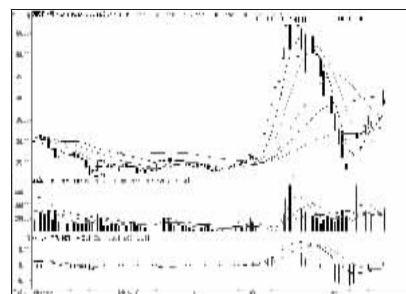
宝光股份 (600379):放量下跌,择机出局



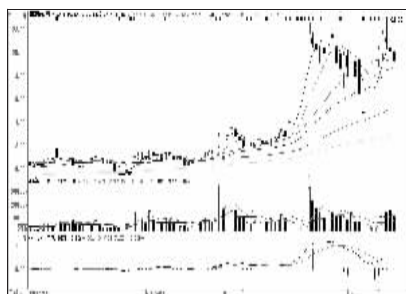
四川九洲 (000801):反弹幅度已大,谨慎



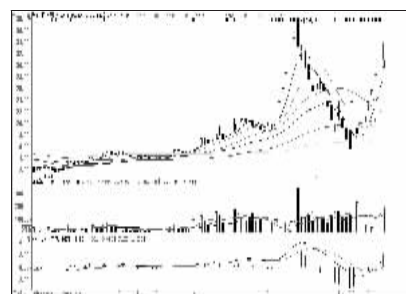
机器人 (600024):买盘支撑,谨慎持股



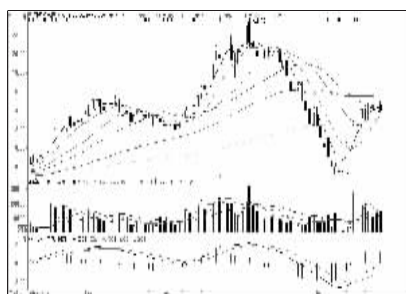
万盛股份 (603010):蓄势冲高,持股为宜



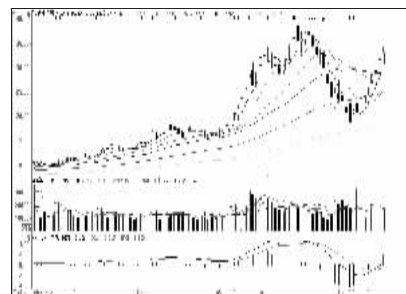
海南瑞泽 (002596):双头形态,回避为宜



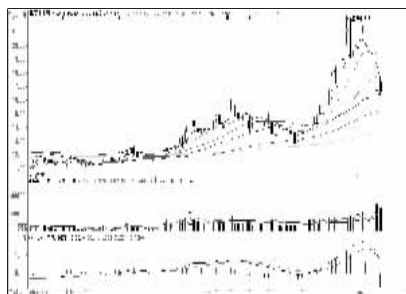
骅威股份 (002502):涨势趋弱,逢高减仓



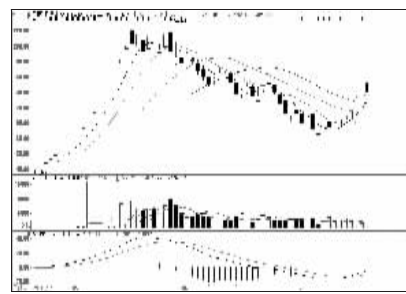
科新机电 (600092):趋弱迹象,减仓观望



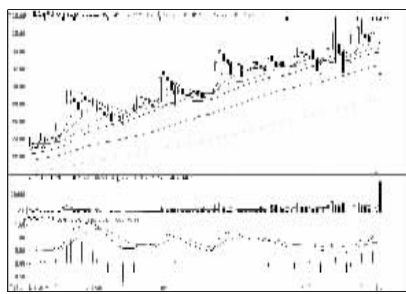
信维通信 (600136):带量回升,看高一线



海联科技 (600084):有望企稳,谨慎持股



美康生物 (600439):放量滞涨,择机出局



金鸿能源 (000669):抛压沉重,观望为主