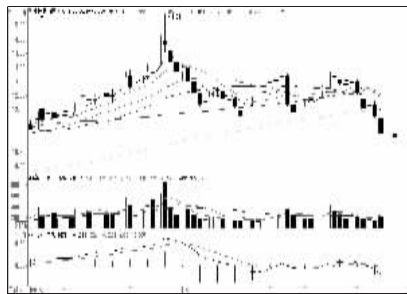


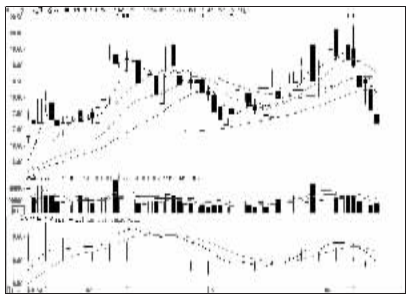
## 沪深10大权重股

沪市10大权重

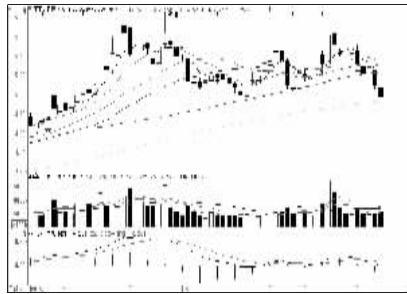


中国石油(601857):跌破半年线,谨慎

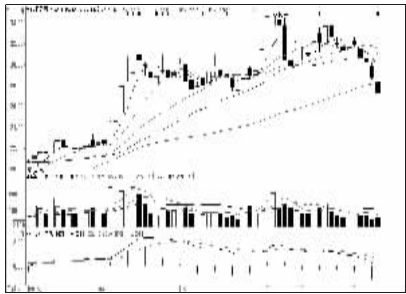
深市10大权重



中万宏源(000166):触及区间下沿,观望



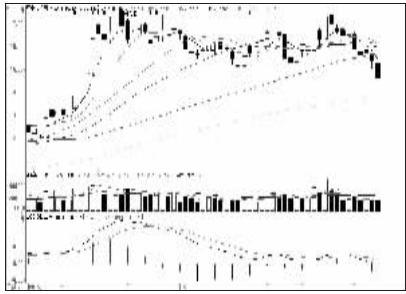
工商银行(601398):关注半年线支撑



国信证券(002736):触及区间下沿,观望



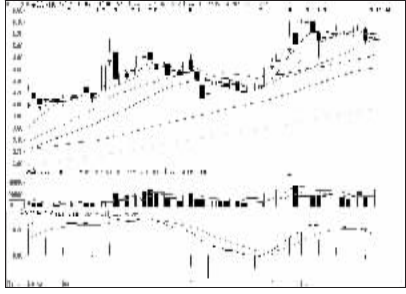
农业银行(601288):跌破半年线,谨慎



平安银行(000001):跌破半年线,谨慎



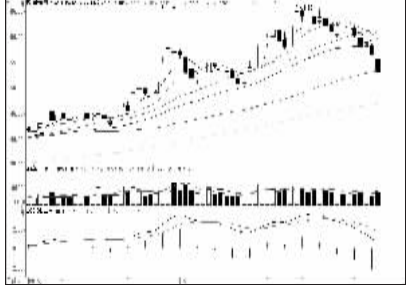
中国银行(601988):缩量下跌,关注均线支撑



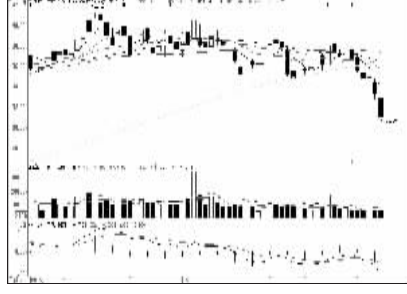
京东方A(000725):横盘震荡,表现抗跌



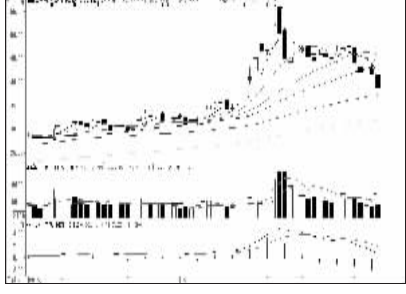
中国石化(600028):关注半年线支撑



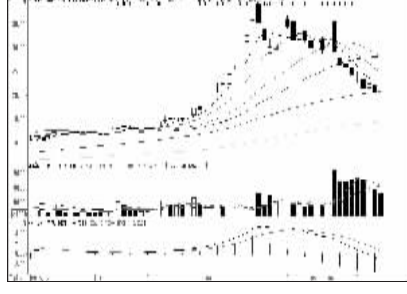
格力电器(000651):连续下挫,短期谨慎



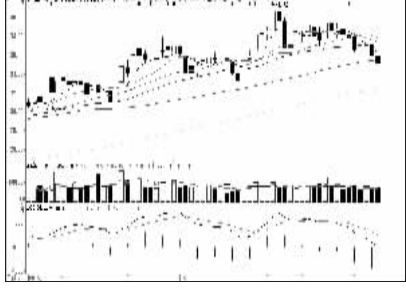
中国人寿(601628):调整充分,伺机吸筹



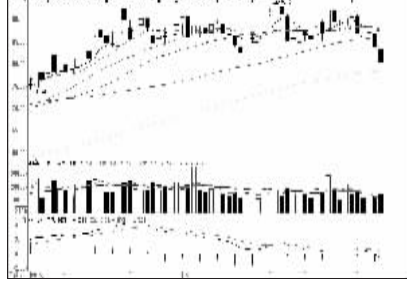
海康威视(002415):关注下方均线支撑



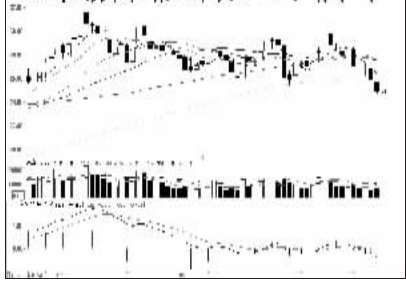
中国中车(601766):调整充分,或将企稳



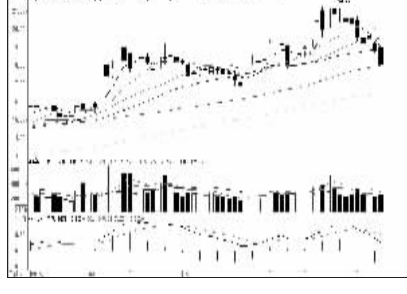
美的集团(000333):均线具备支撑,关注



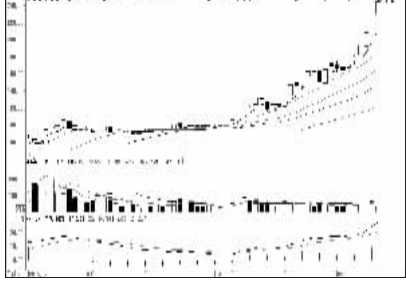
中国平安(601318):关注下方均线支撑



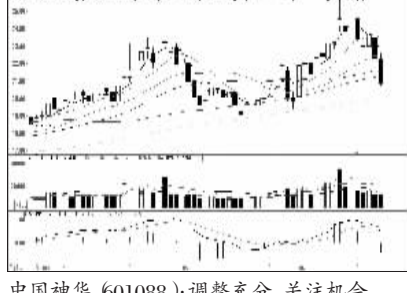
广发证券(000776):跌破震荡区间,谨慎



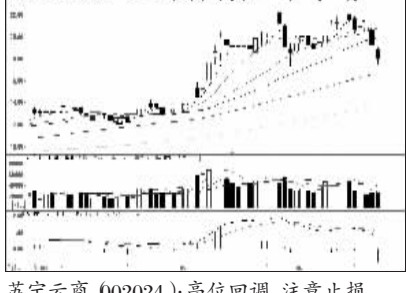
招商银行(600036):关注下方均线支撑



万达院线(002739):长期停牌



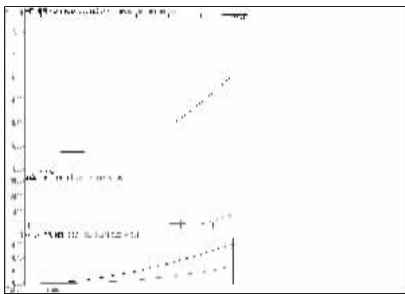
中国神华(601088):调整充分,关注机会



苏宁云商(002024):高位回调,注意止损

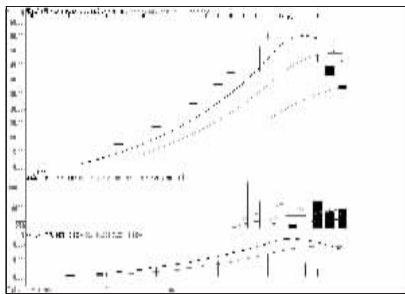
## 周涨跌幅前10

涨幅前10

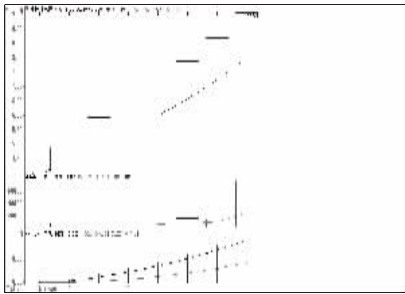


宝钢包装(601968):新股,持股观望

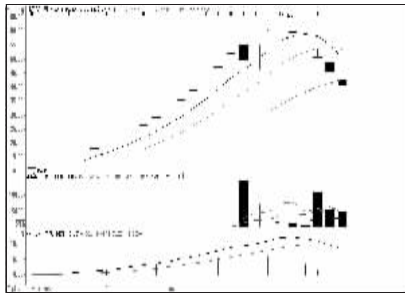
跌幅前10



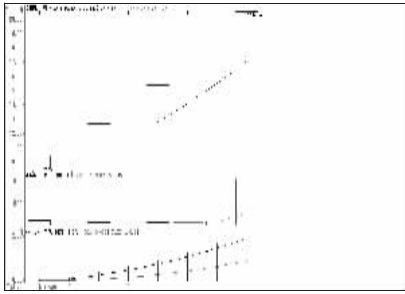
惠伦晶体(300460):次新股,谨慎为妙



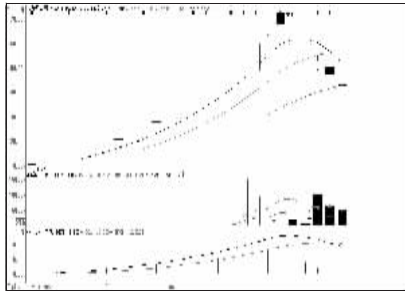
中国核电(601985):新股,持股观望



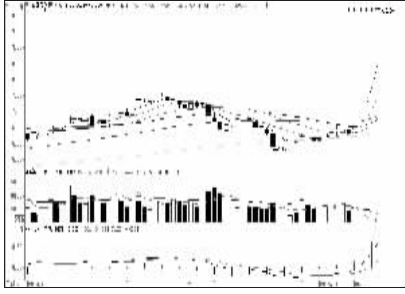
浙江金科(300459):次新股,谨慎为妙



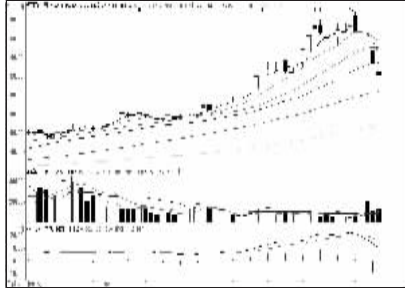
多喜爱(002761):新股,持股观望



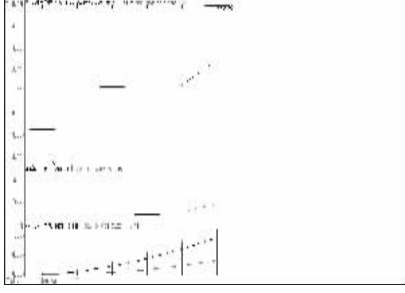
东方新星(002755):次新股,谨慎为妙



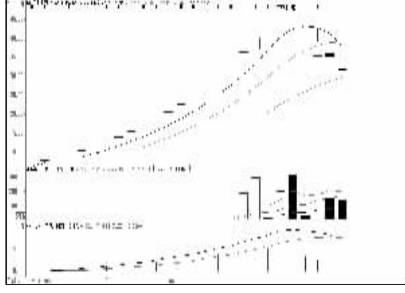
金鹰股份(600232):复牌连续涨停,观望



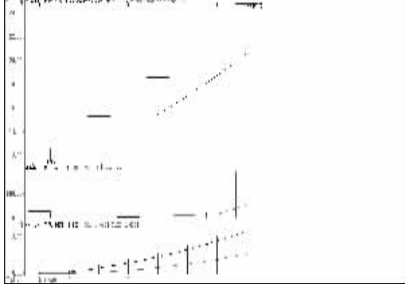
华鹏飞(300350):强势股回调,离场



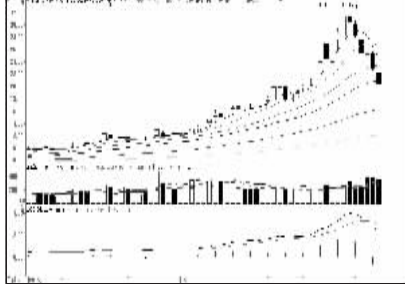
绿城水务(601368):新股,持股观望



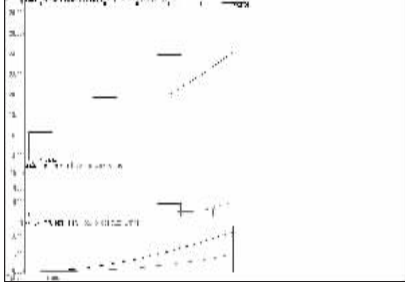
雪峰科技(603227):次新股,谨慎为妙



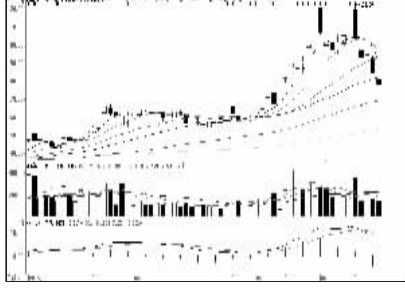
聚隆科技(300475):新股,持股观望



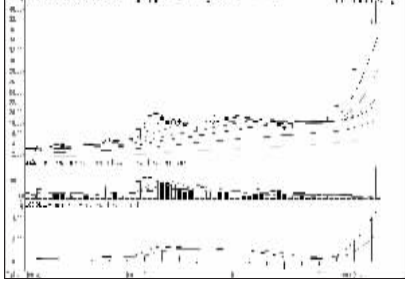
广聚能源(000096):强势股回调,离场



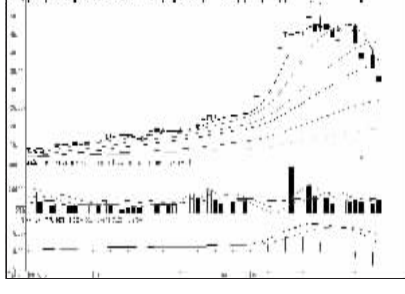
韩建河山(603616):新股,持股观望



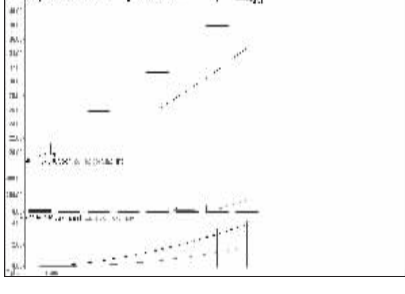
跨境通(002640):强势股回调,离场



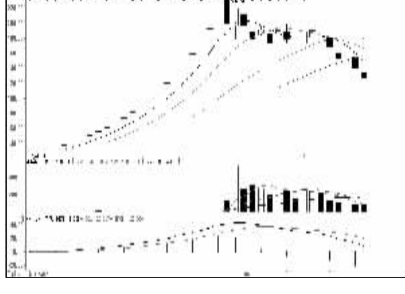
英特集团(000411):高位放量,谨防回调



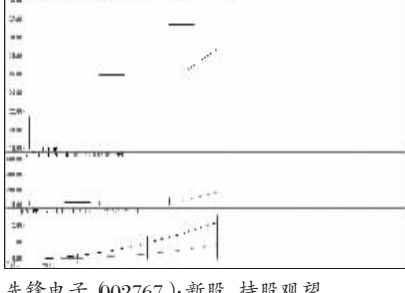
汉鼎股份(300300):放量下跌,及时止损



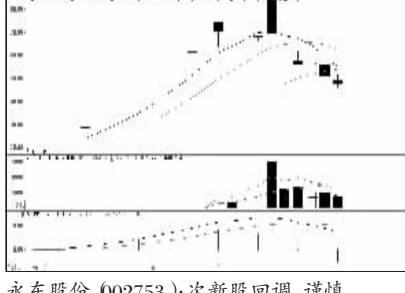
杭州高新(300478):新股,持股观望



康斯特(300445):次新股回调,谨慎



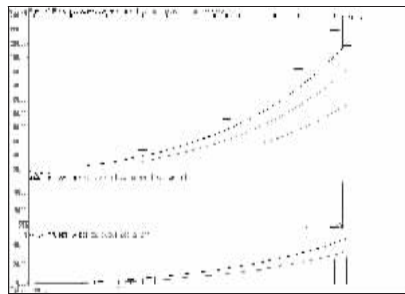
先锋电子(002767):新股,持股观望



永东股份(002753):次新股回调,谨慎

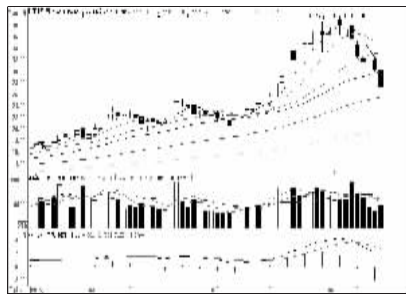
## 连续涨跌前10

连涨前10

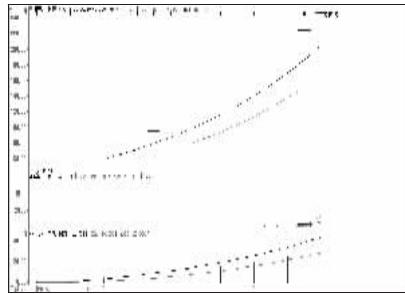


创业软件(300451):高位放量,谨防调整

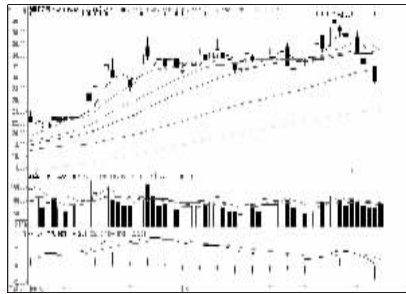
连跌前10



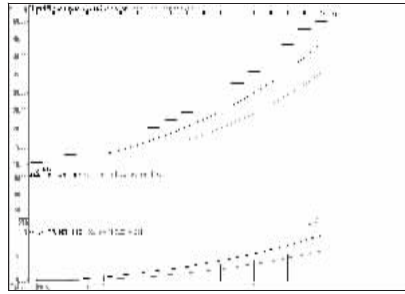
理工监测(002322):回调充分,低位介入



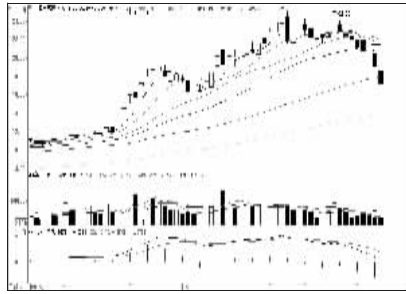
迅游科技(300467):涨幅较大,逐步止盈



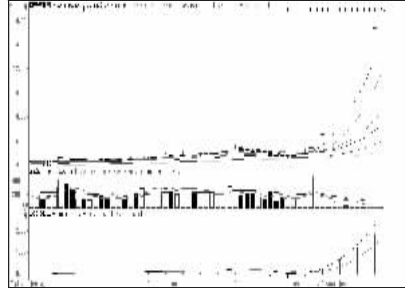
西部证券(002673):回调充分,低位介入



引力传媒(603598):高位放量,落袋为安



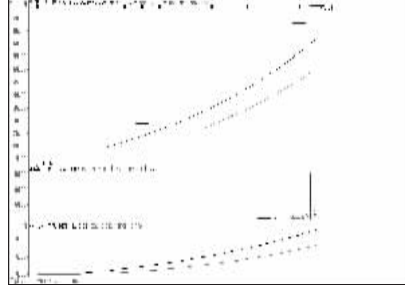
上海电气(601727):回调充分,低位介入



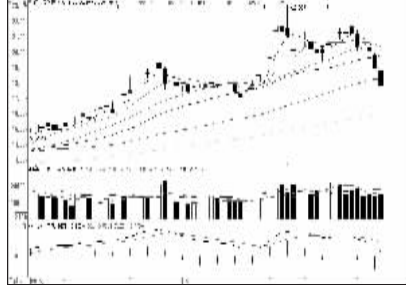
恒天天鹅(000687):连续涨停,持股观望



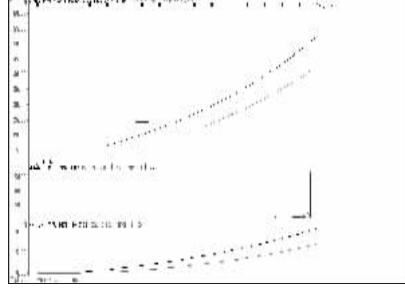
中核科技(000777):连续下挫,谨慎观望



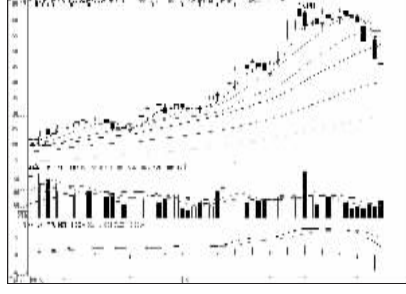
高伟达(300465):涨幅较大,落袋为安



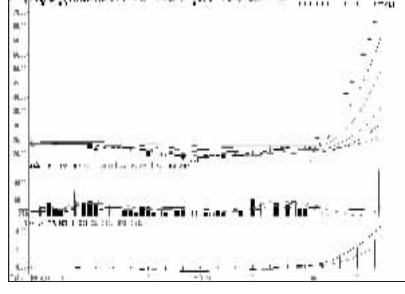
伊利股份(600887):关注下方均线支撑



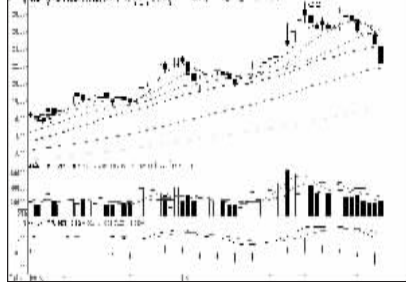
金桥信息(603918):涨幅较大,落袋为安



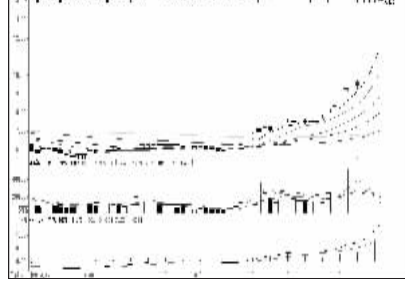
金信诺(00252):强势股回调,谨慎



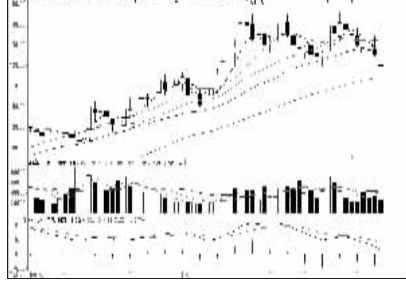
中瑞思创(300078):涨幅较大,落袋为安



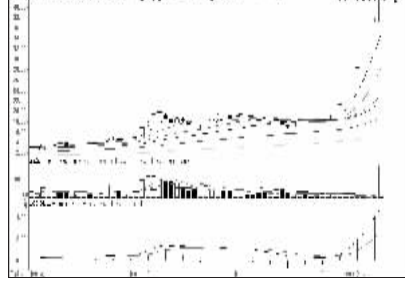
南京高科(600064):关注下方均线支撑



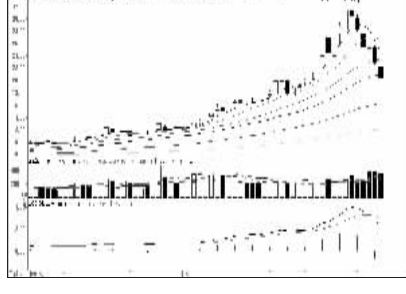
大洋电机(002249):连续涨停,持股观望



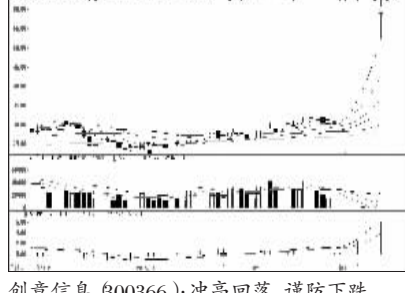
春秋航空(601021):关注均线支撑



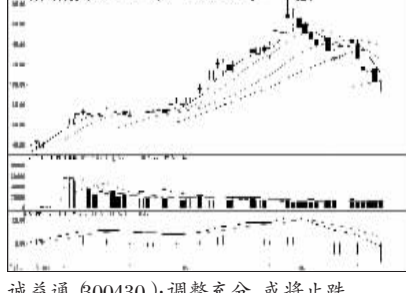
英特集团(000411):高位放量,谨慎为妙



广聚能源(000096):放量下跌,谨慎为宜



创意信息(300366):冲高回落,谨防下跌



诚益通(300430):调整充分,或将止跌