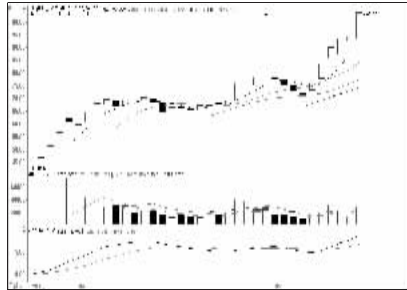


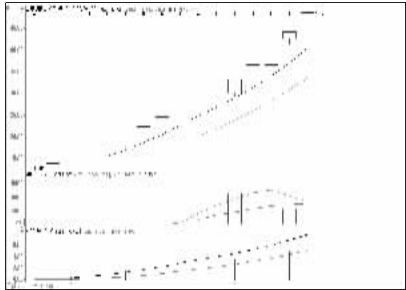
股东人数增减前10

股东人数减少前10



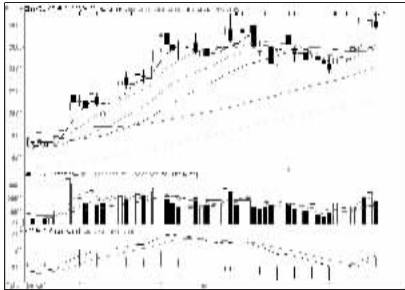
浙江鼎力 (603338): 强势格局, 看高一线

股东人数增加前10



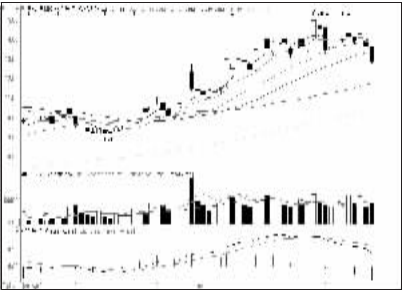
山东华鹏 (603021): 涨幅已大, 持股不追

资金流入金额前10



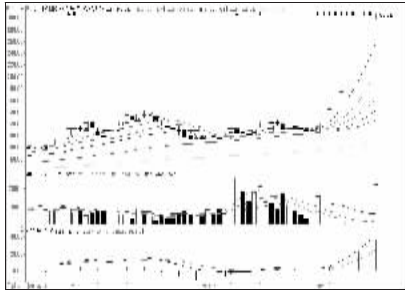
国金证券 (600109): 上方压力较大, 观望

资金流出金额前10



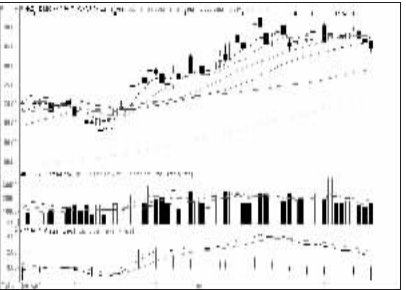
保利地产 (600048): 短线趋弱, 观望为主

成交突增前10

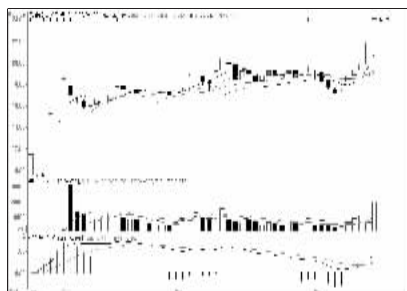


长亮科技 (600348): 高位放量, 谨慎

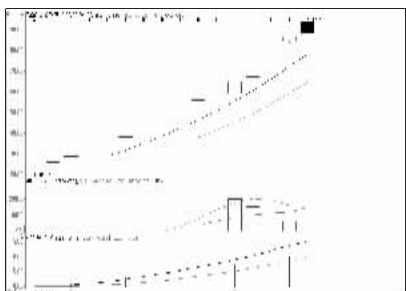
成交金额前8



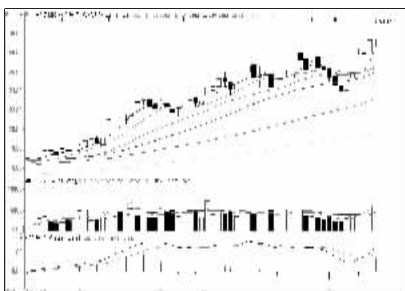
中国平安 (601318): 短线趋弱, 观望为主



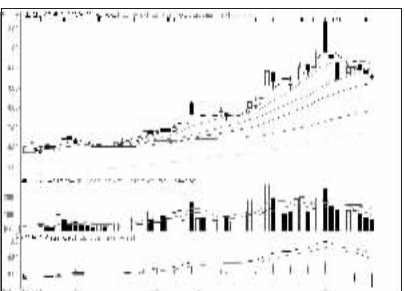
继峰股份 (603997): 再掀升升, 跟进为宜



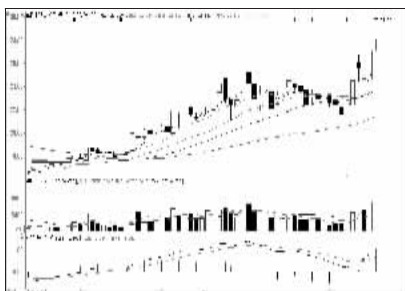
老百姓 (603883): 高位放量, 逐步止盈



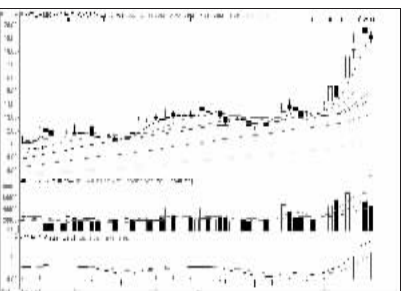
上海医药 (601607): 价升量增, 跟进



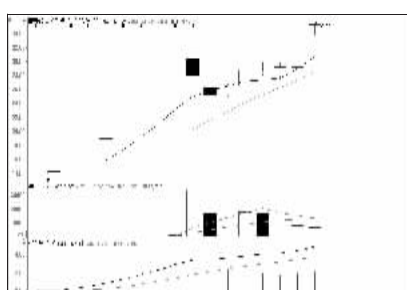
中国建筑 (601668): 仍有向下空间, 出局



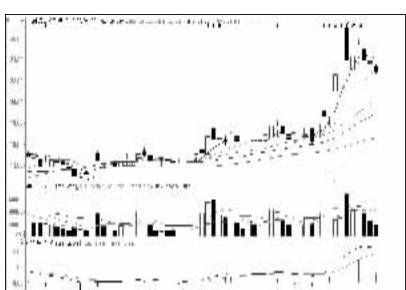
花园生物 (800401): 上攻形态, 逢低吸纳



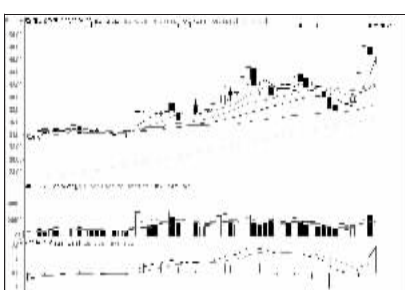
苏宁云商 (002024): 多头形态, 逢低介入



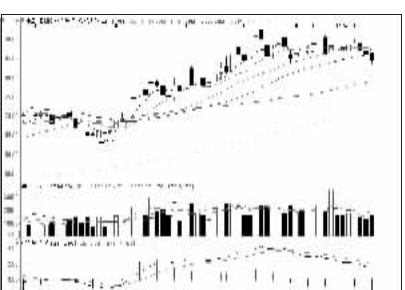
曲美股份 (603818): 多头市道, 持有为主



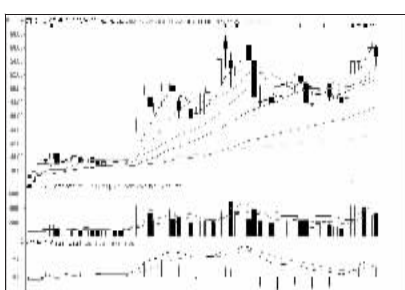
兰石重装 (603169): 卖压沉重, 兑现离场



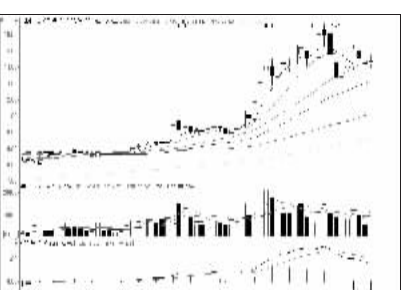
陆家嘴 (600663): 有望继续走强, 介入



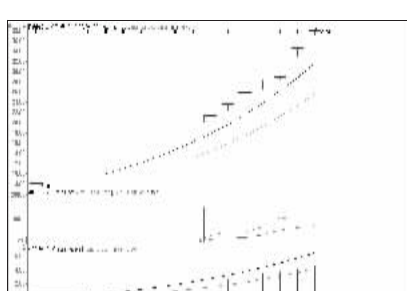
中国平安 (601318): 短线趋弱, 观望为主



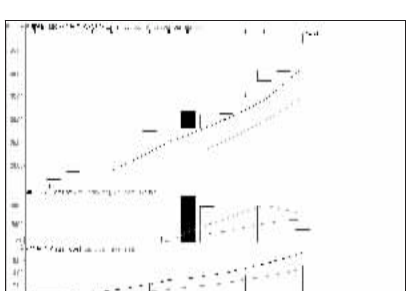
艾比森 (800389): 多头格局, 逢低介入



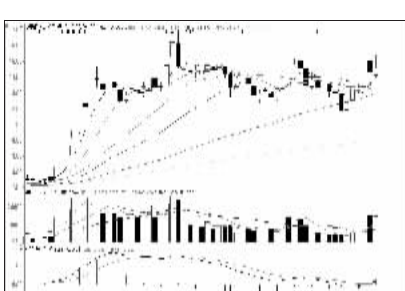
中国重工 (601989): 整理走势, 暂时观望



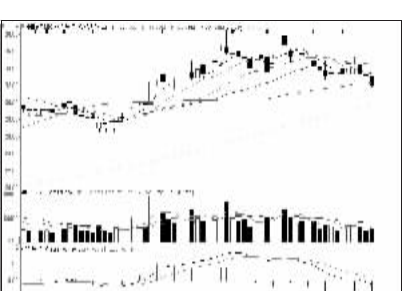
昇兴股份 (002752): 涨幅已大, 持股不追



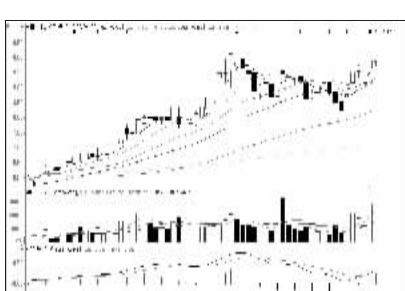
福鞍股份 (603315): 买盘趋弱, 逐步止盈



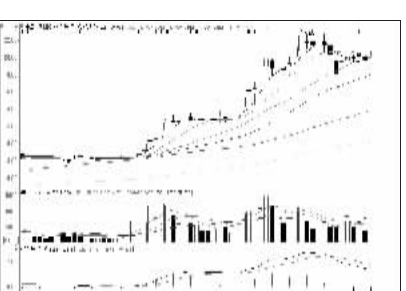
盛屯矿业 (600711): 蓄势突破, 低吸



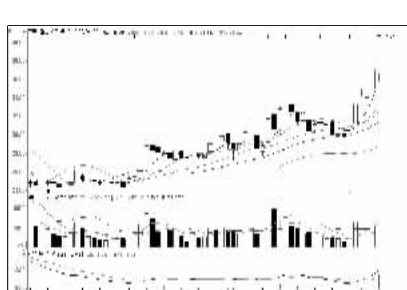
中信证券 (600030): 弱势形态, 减仓回避



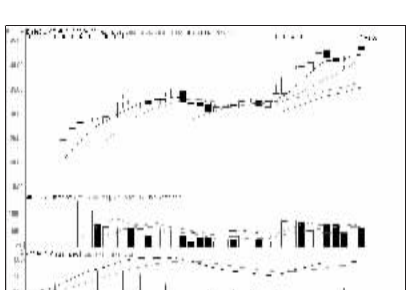
圣银高科 (800087): 价升量增, 跟进



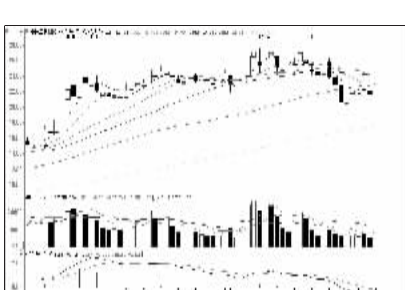
中国中铁 (601390): 强势格局, 持有



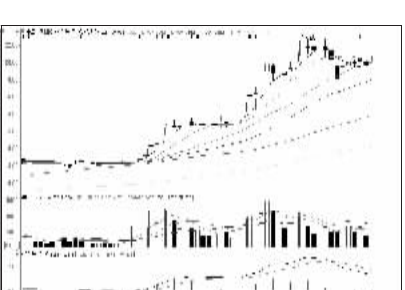
宁波高发 (603788): 谨防回调, 持股不追



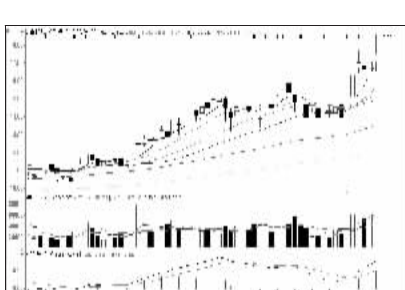
松发股份 (603268): 上攻乏力, 落袋为安



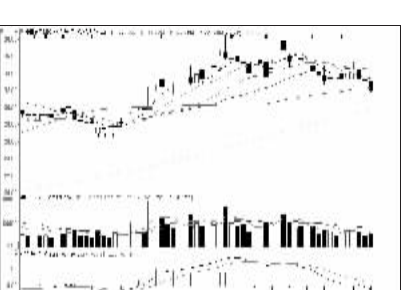
中铁二局 (600528): 有望走强, 介入



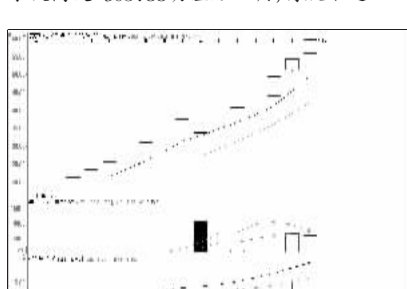
中国中铁 (601390): 强势格局, 持有



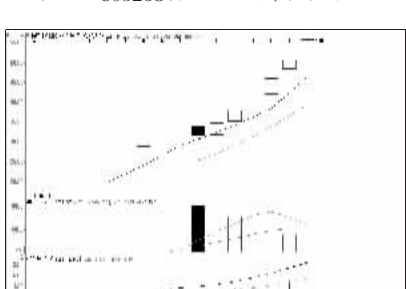
天山生物 (800313): 多头格局, 逢低介入



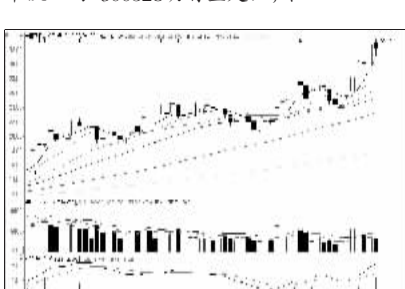
中信证券 (600030): 弱势形态, 减仓回避



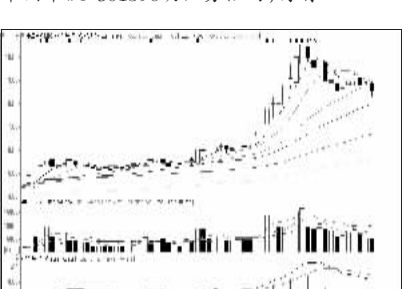
双杰电气 (800444): 多头格局, 持股为主



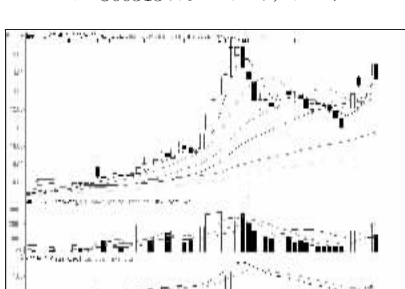
盛洋科技 (603703): 连续上攻, 持股不追



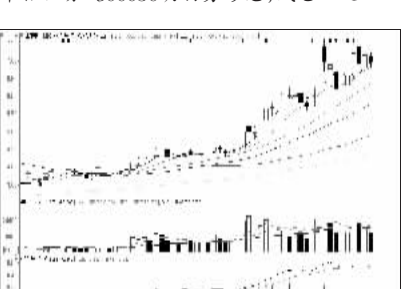
海信电器 (600060): 多头市道, 低吸



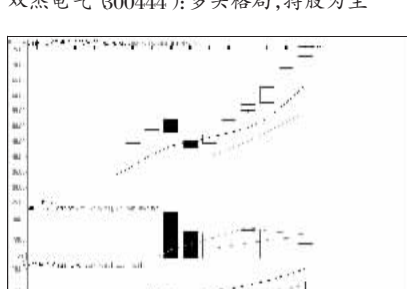
中国联通 (600050): 走势趋弱, 出局为宜



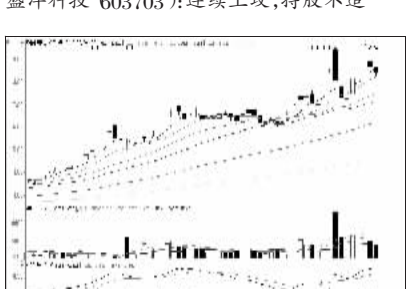
扬子新材 (002652): 上攻遇阻, 暂时出局



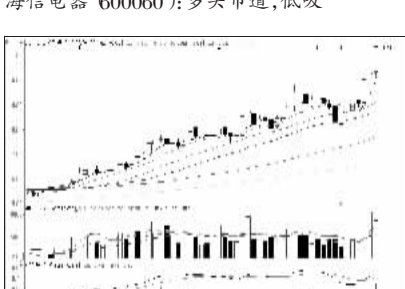
国电电力 (600795): 升势趋弱, 持股观望



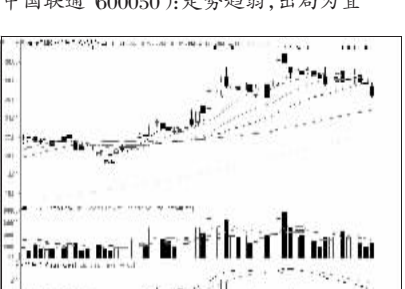
普丽盛 (800442): 强力拉升, 持股观望



华锐风电 (601558): 多头形态, 持股为主



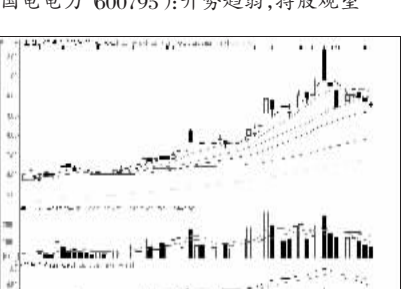
苏州高新 (600736): 攻势强劲, 跟进



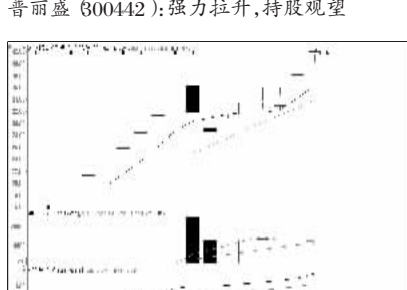
海通证券 (600837): 弱势格局, 离场观望



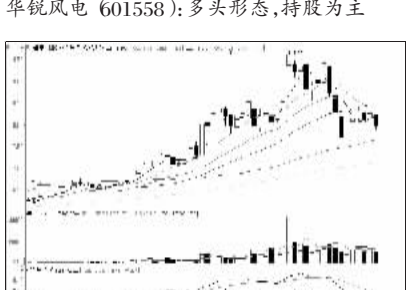
雅化集团 (002497): 有望重拾升势, 关注



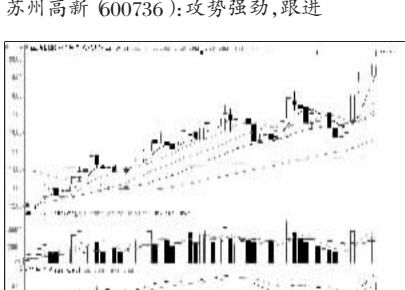
中国建筑 (601668): 仍有向下空间, 出局



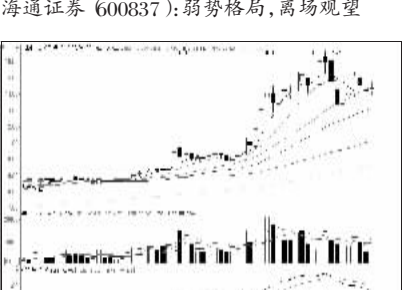
大豪科技 (603025): 仍有向上空间, 跟进



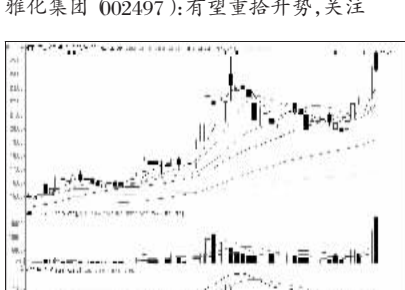
浙能电力 (600023): 尚未企稳, 观望为宜



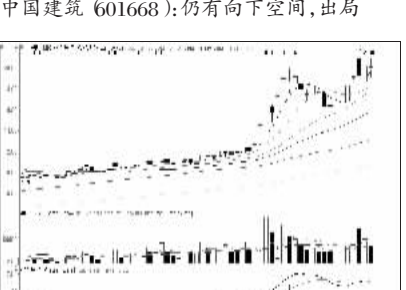
西部资源 (600139): 均线良好, 逢低吸纳



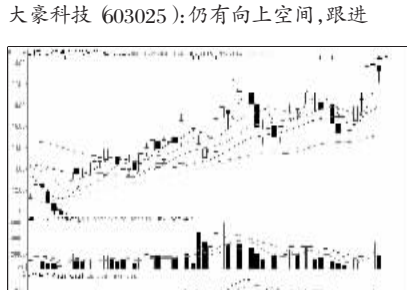
中国重工 (601989): 整理走势, 暂时观望



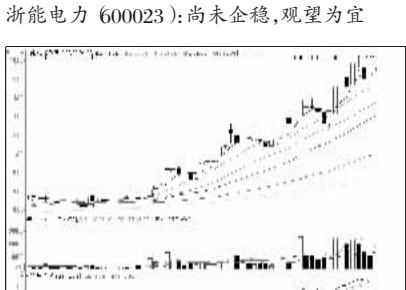
雅本化学 (800261): 强势格局, 低吸



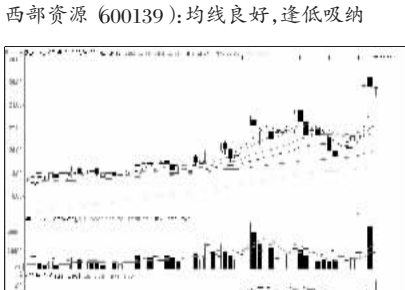
上海电气 (601727): 多头格局, 持股



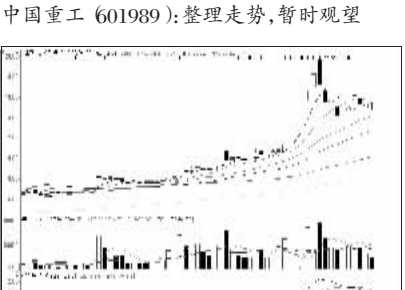
山水文化 (600234): 量能不足, 观望为宜



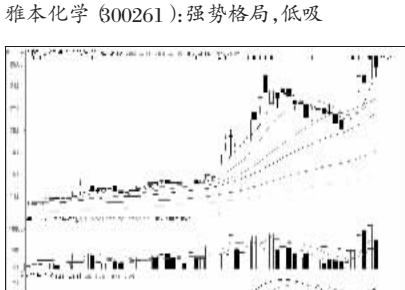
中毅达 (600610): 强势格局, 持股为主



界龙实业 (600836): 有望继续走强, 介入



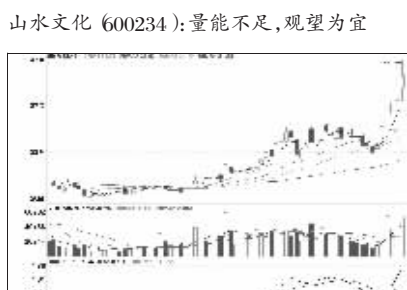
中国电建 (601669): 整理走势, 观望为主



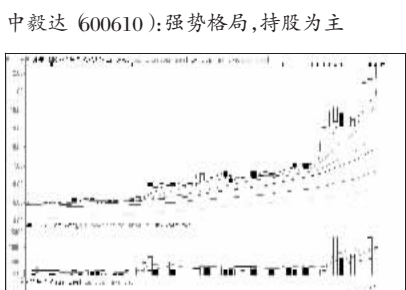
沃尔核材 (002130): 短线需巩固, 观望



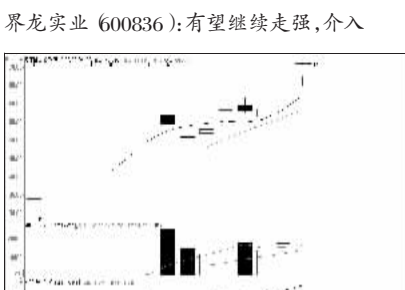
雄韬股份 (002733): 多头形态, 持股为主



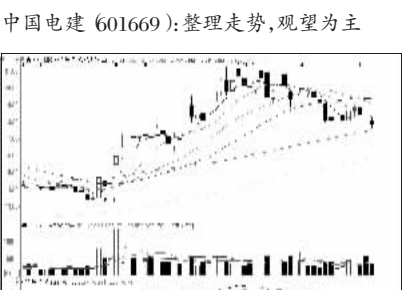
新澳股份 (603889): 升势良好, 逢低吸纳



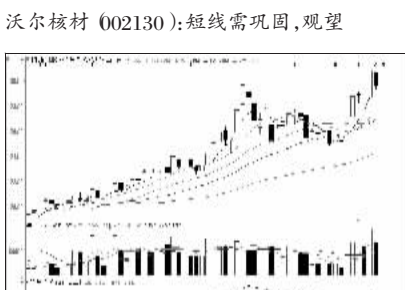
华银电力 (600744): 价量配合, 逢低介入



珍宝岛 (603567): 看高一线, 持股



兴业银行 (601166): 走势偏弱, 回避



雄韬股份 (002733): 多头形态, 持股为主

看股票 买彩票 全搞定 大智慧手机版 d.wapgw.cn