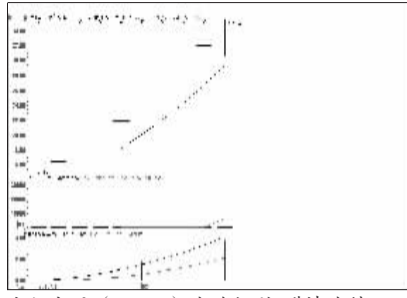


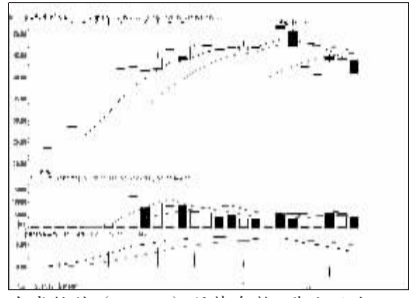
股东人数增减前10

股东人数减少前10



火炬电子 (603678):波动加剧,谨慎为妙

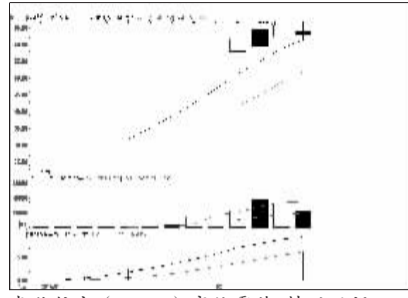
股东人数增加前10



南威软件 (603636):弱势盘整,谨防下跌

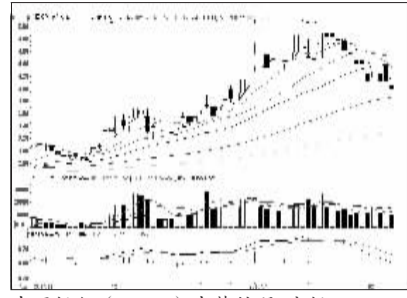
一周资金流入流出金额前10

资金流入金额前10



春秋航空 (601021):高位震荡,持股观望

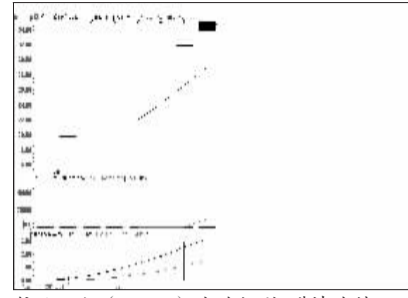
资金流出金额前10



中国银行 (601988):走势转弱,离场

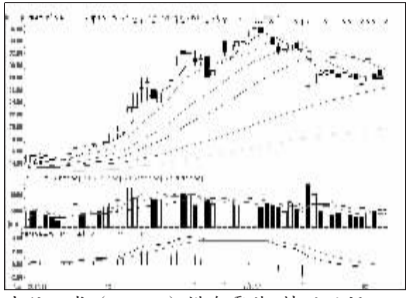
周成交金额

成交突增前10

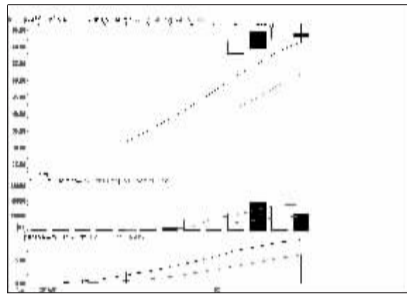


航天工程 (603698):波动加剧,谨慎为妙

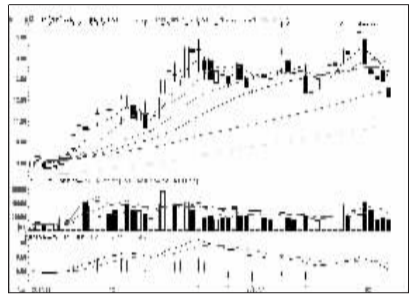
成交金额前8



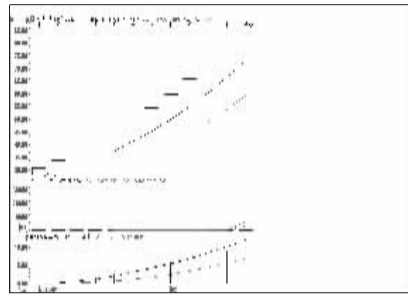
中信证券 (600030):横盘震荡,持股观望



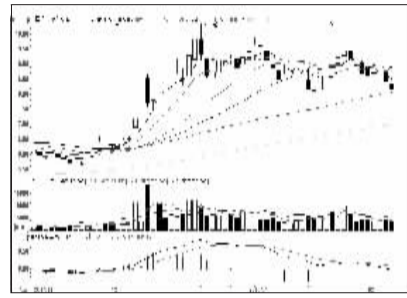
春秋航空 (601021):高位震荡,持股观望



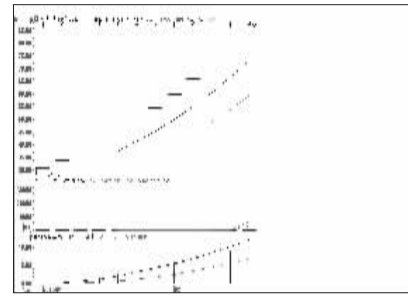
一拖股份 (601038):无转强迹象,减磅



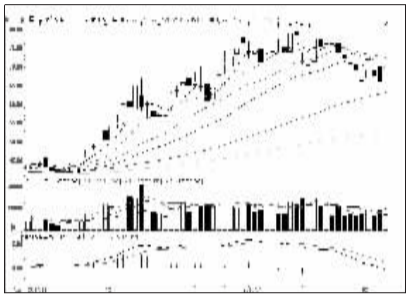
万达院线 (002739):暂且持有,关注量能



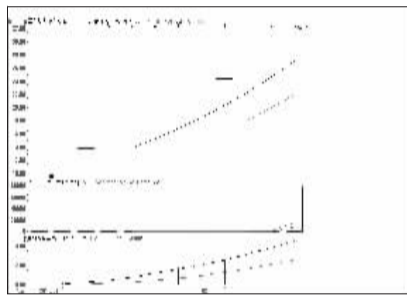
中国重工 (601989):考验均线支撑



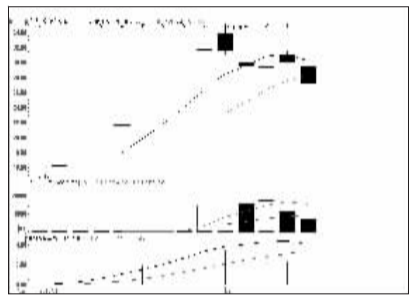
万达院线 (002739):暂且持有,关注量能



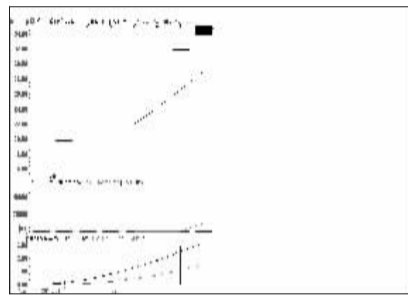
中国平安 (601318):弱势整理,继续观望



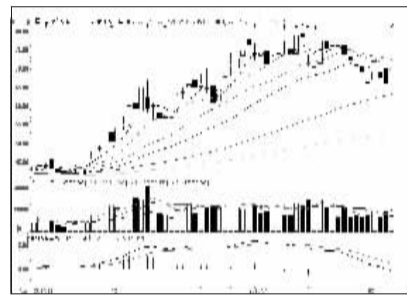
再升科技 (603601):暂且持有,关注量能



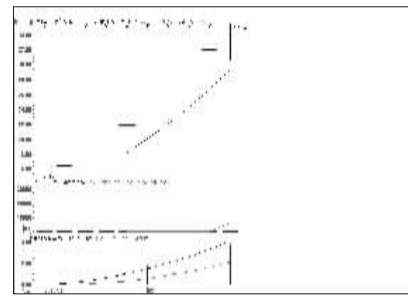
宁波高发 (603738):高位回调,减磅



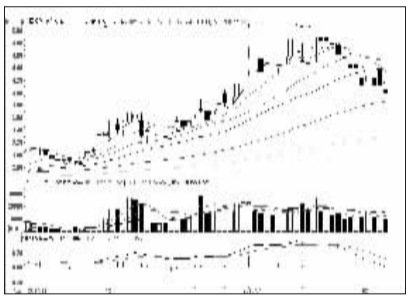
航天工程 (603698):波动加剧,谨慎为妙



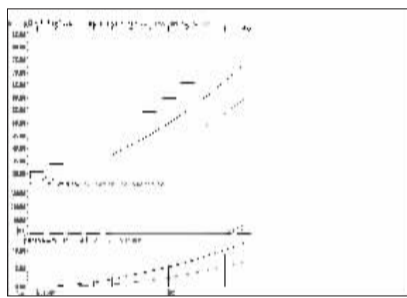
中国平安 (601318):弱势整理,继续观望



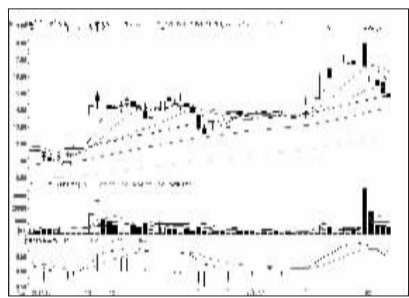
火炬电子 (603678):波动加剧,谨慎为妙



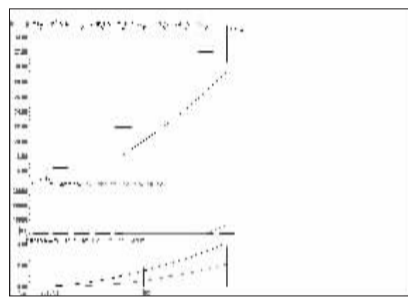
中国银行 (601988):走势转弱,离场



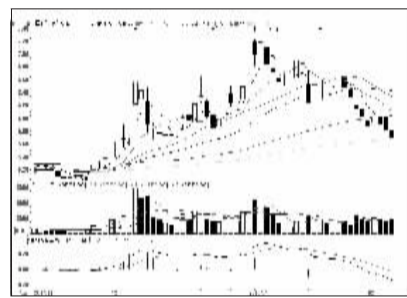
万达院线 (002739):暂且持有,关注量能



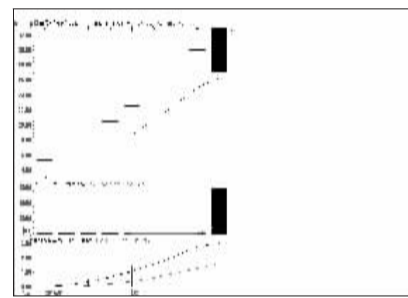
华东重工 (002685):缩量下跌,低位介入



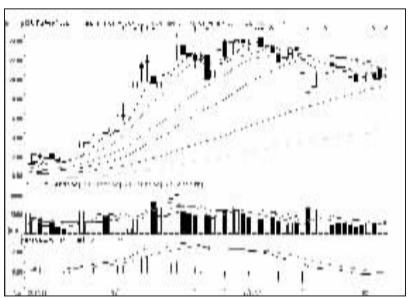
火炬电子 (603678):波动加剧,谨慎为妙



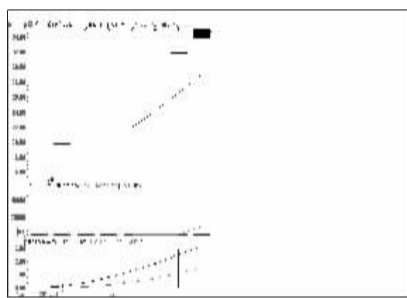
中国石化 (600028):支撑无力,谨慎为佳



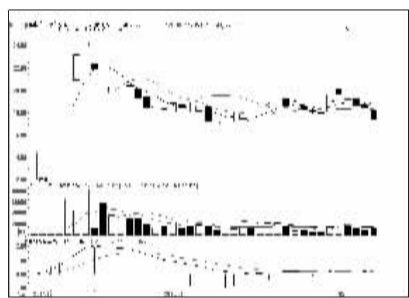
利民股份 (002734):冲高回落,落袋为安



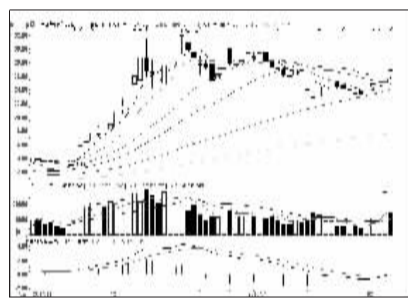
海通证券 (600837):横向整理,不跟为主



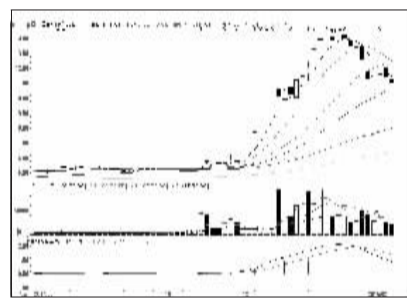
航天工程 (603698):波动加剧,谨慎为妙



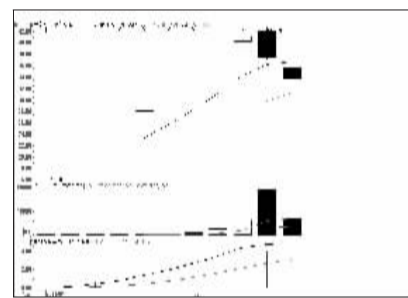
华电重工 (601226):调整后仍将上行



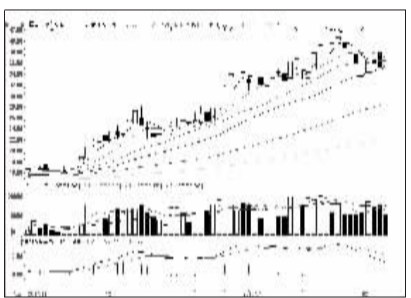
招商证券 (600999):短线或有回调,低吸



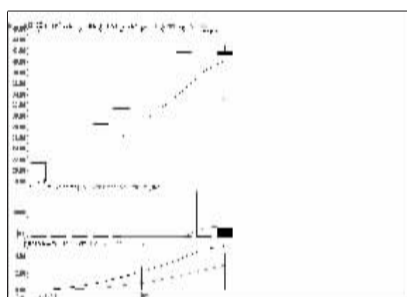
中国南车 (601766):短线走弱,减磅为主



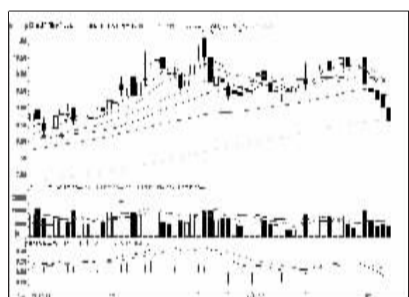
伊之密 (800415):高位回调,谨慎为妙



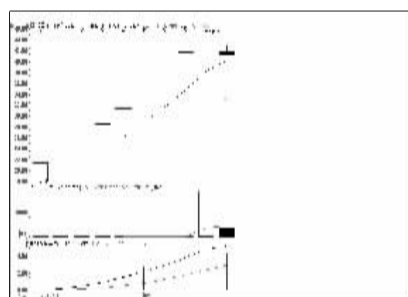
中国人寿 (601628):整理形态,观望为宜



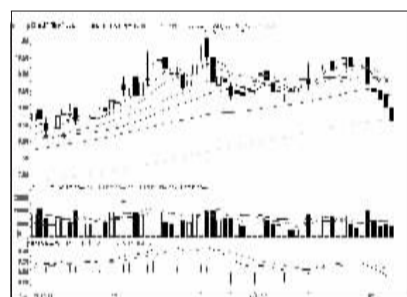
龙马环卫 (603686):高位回调,兑现盈利



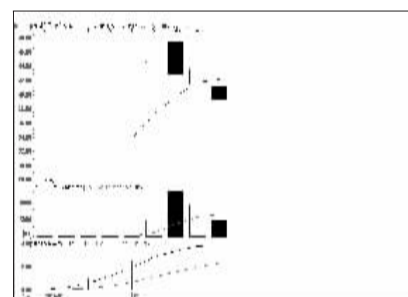
亚盛集团 (600108):弱势格局,注意止损



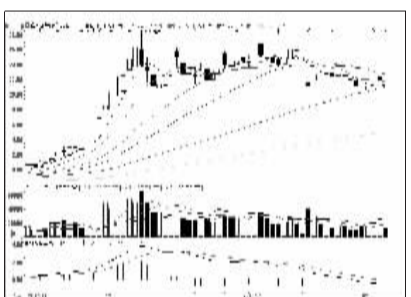
龙马环卫 (603686):高位回调,兑现盈利



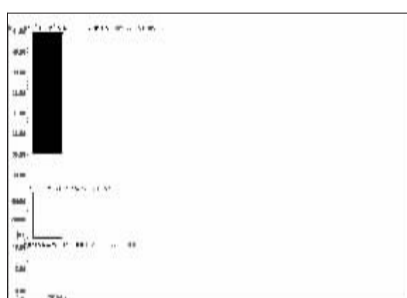
亚盛集团 (600108):弱势格局,注意止损



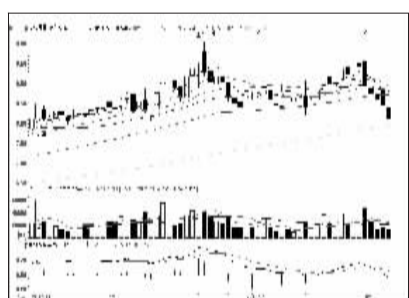
健盛集团 (603558):形态走坏,减磅



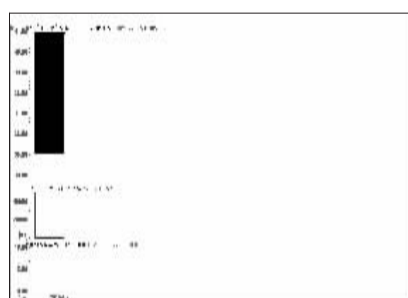
华泰证券 (601688):整理为主,暂时观望



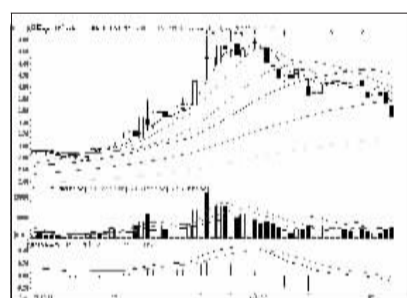
快乐购 (800413):冲高回落,及时止盈



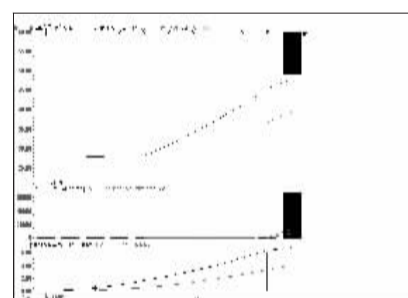
敦煌种业 (600354):买入意义不大,减磅



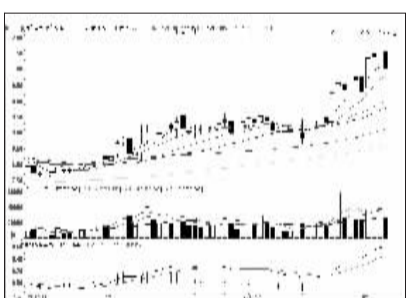
快乐购 (800413):冲高回落,及时止盈



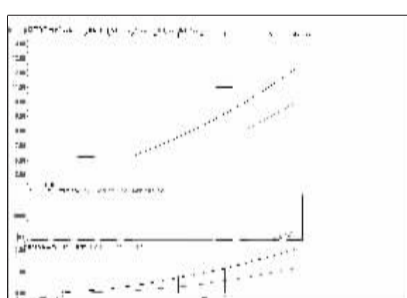
国电电力 (600795):买入意义不大,离场



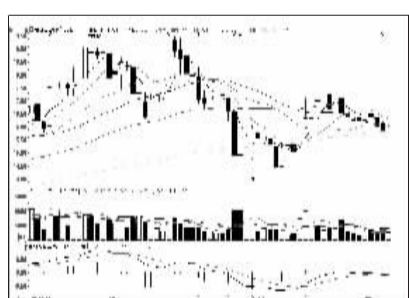
南华仪器 (800417):冲高回落,落袋为安



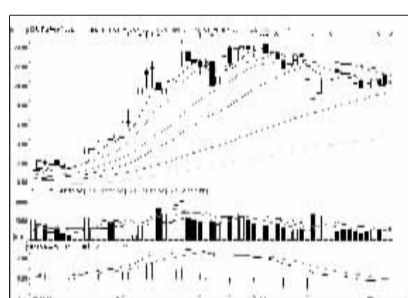
苏宁云商 (002024):买气不济,高抛为主



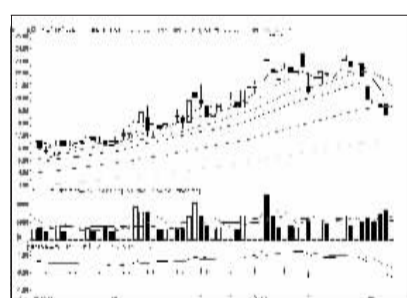
西部黄金 (601069):强势格局,暂且持有



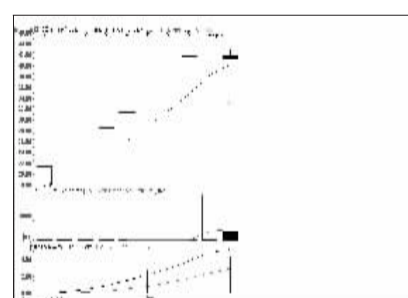
大连电瓷 (002606):震荡盘整态势,不跟



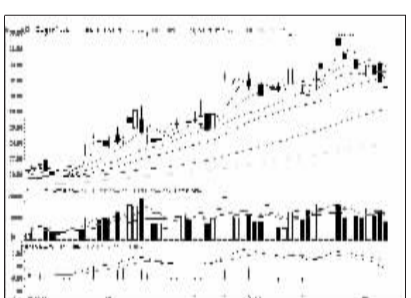
海通证券 (600837):横向整理,不跟为主



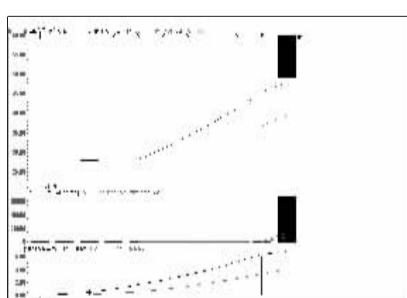
东方电气 (600875):仍无转强迹象,减磅



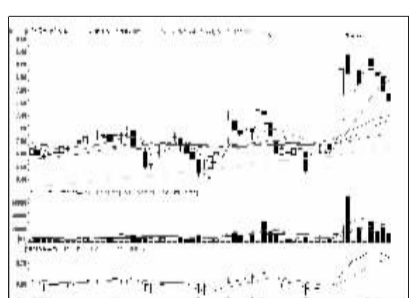
龙马环卫 (603686):高位回调,兑现盈利



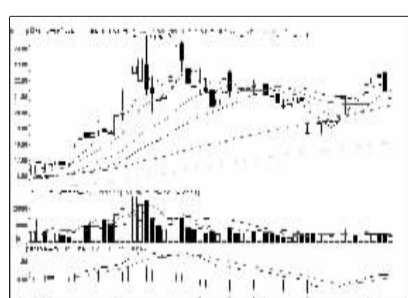
中国太保 (601601):形态走坏,减磅



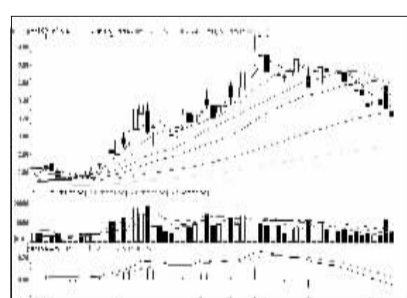
南华仪器 (800417):冲高回落,落袋为安



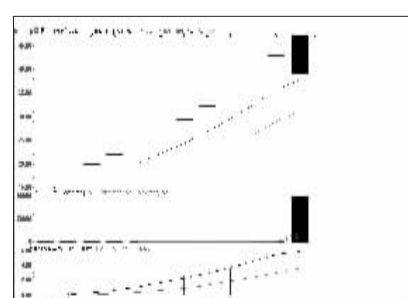
兰州民百 (600738):主力实力不强,出货



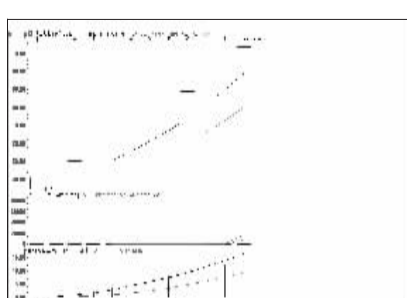
辽宁成大 (600739):止升转跌,谨慎为妙



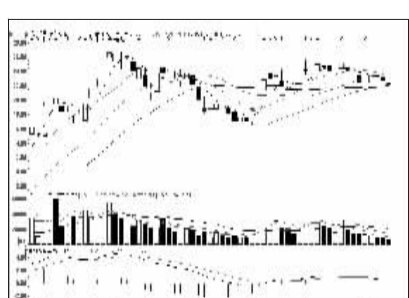
农业银行 (601288):连续下挫,注意止损



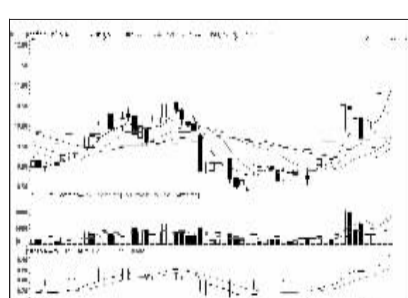
苏试试验 (800416):冲高回落,落袋为安



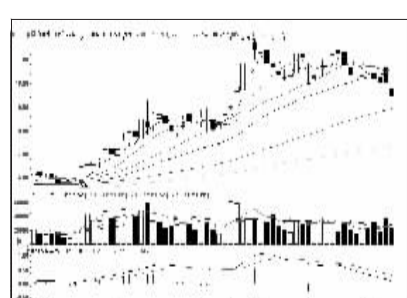
浩丰科技 (800419):显著放量,谨慎为妙



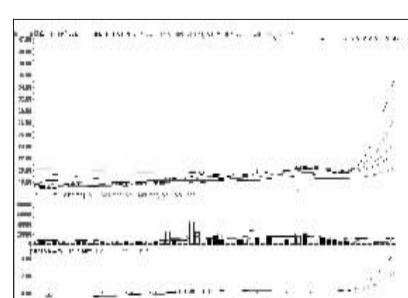
兰石重装 (603169):买入意义不大,减磅



综艺股份 (600770):中期有走好迹象



保利地产 (600048):短线走弱,减磅为主



华鹏飞 (800350):高位放量,逐步止盈

看股票 买彩票 全搞定 大智慧手机版 d.wapgw.cn