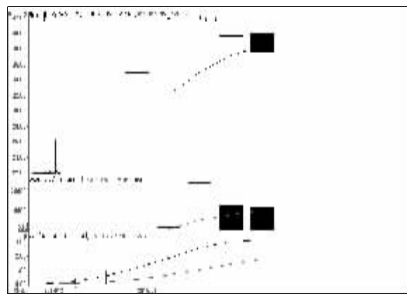


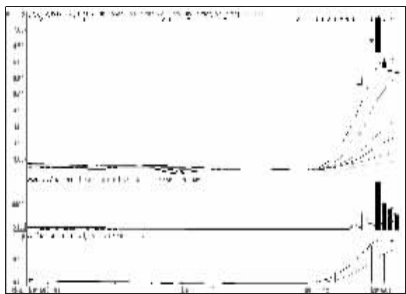
股东人数增减前10

股东人数减少前10



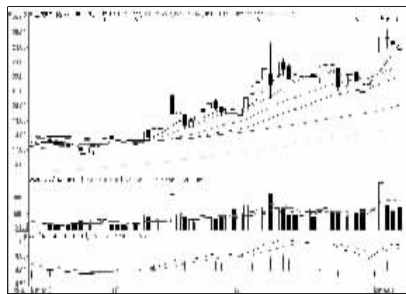
高能环境 (603588):新股回调,观望为宜

股东人数增加前10



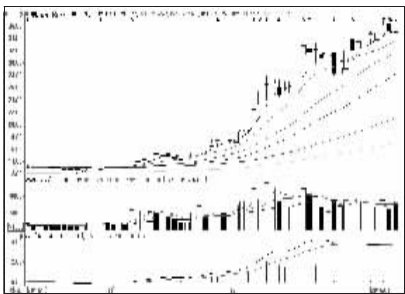
赤天化 (600227):仍有调整空间,出局

资金流入金额前10



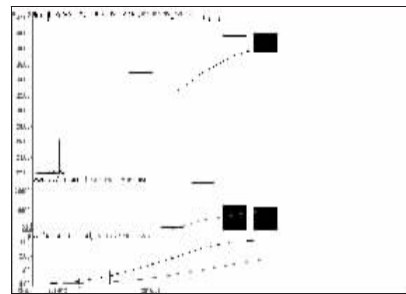
上汽集团 (600104):上攻遇阻,减仓观望

资金流出金额前10



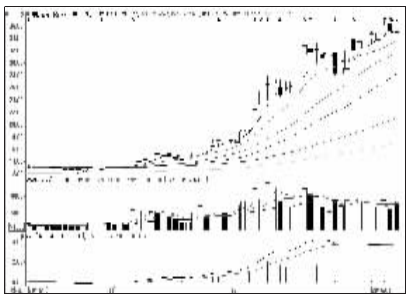
中信证券 (600030):短线趋弱,减仓观望

成交突增前10

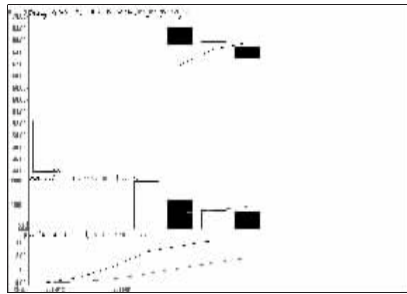


高能环境 (603588):新股回调,观望为宜

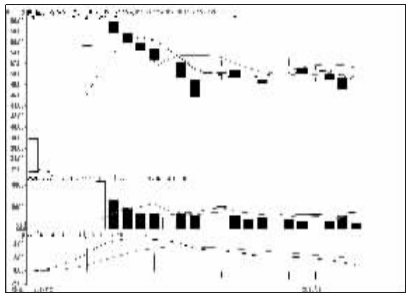
成交金额前8



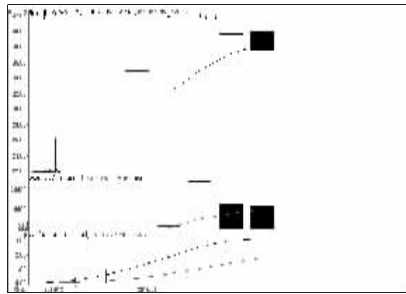
中信证券 (600030):短线趋弱,减仓观望



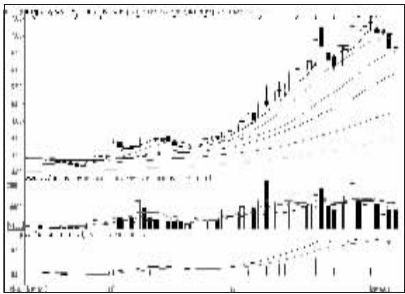
葵花药业 (002737):新股回调,观望为宜



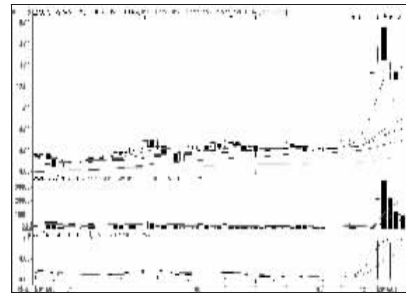
柳州医药 (603368):弱势格局,回避



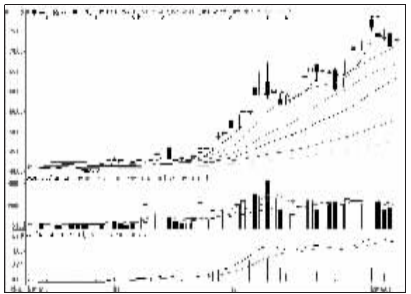
高能环境 (603588):新股回调,观望为宜



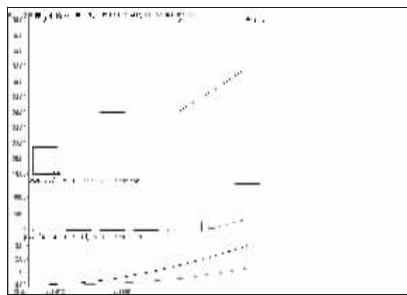
中国建筑 (601668):短线整理,持股为主



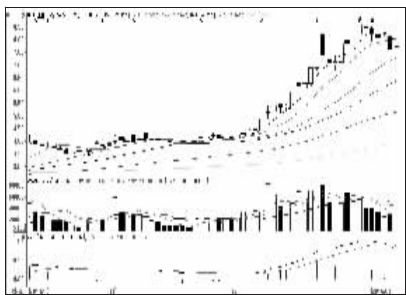
宝光股份 (600379):尚未企稳,回避



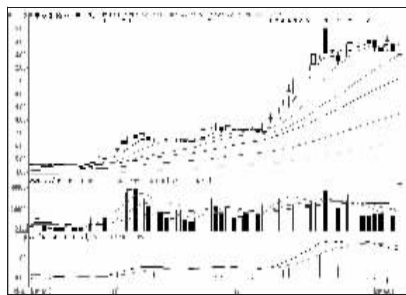
中国平安 (601318):短线承压,中线持股



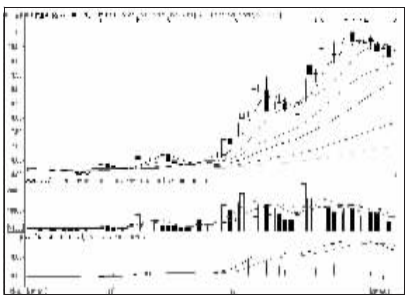
南威软件 (603636):成交放大,面临调整



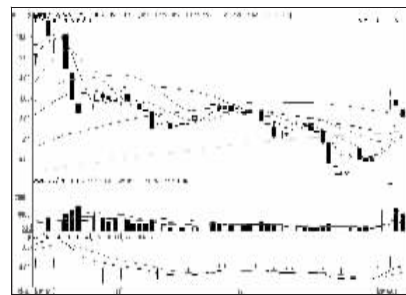
中国电建 (601669):短线承压,暂且回避



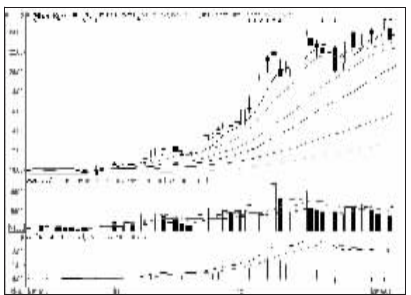
中国交建 (601800):有回调压力,减仓观望



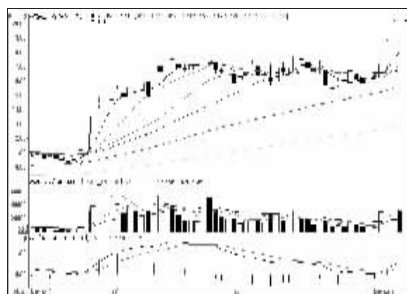
民生银行 (600016):走势偏弱,观望为宜



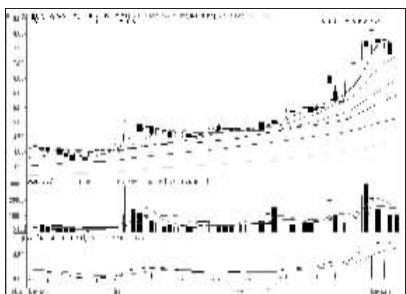
拓中建设 (002346):买盘不济,出局为主



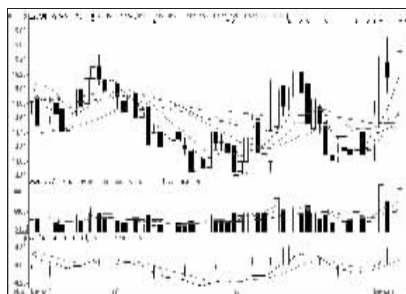
海通证券 (600837):压力渐增,短线回避



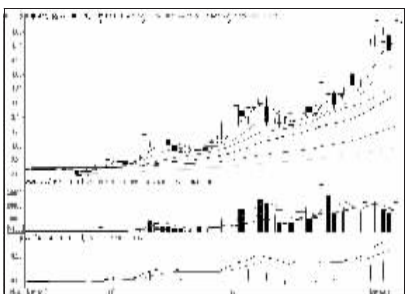
界龙实业 (600836):获利盘丰厚,观望



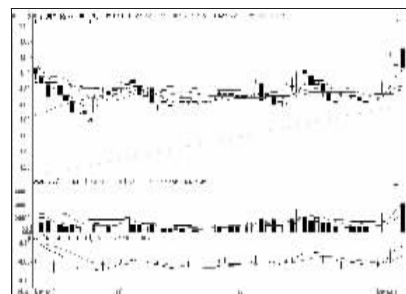
山推股份 (000680):形态仍需巩固,观望



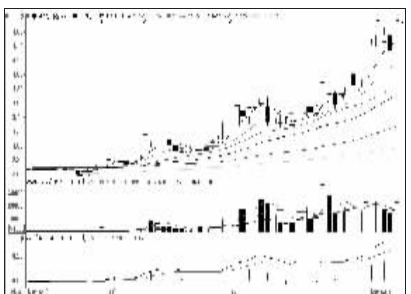
三安光电 (600703):年线附近或有反复



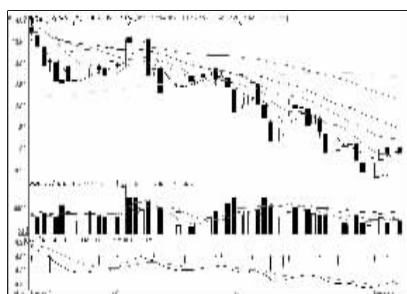
中国银行 (601988):阻力增大,谨慎持股



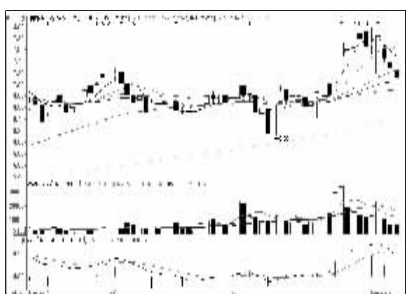
东北电气 (000585):上攻遇阻,逢高离场



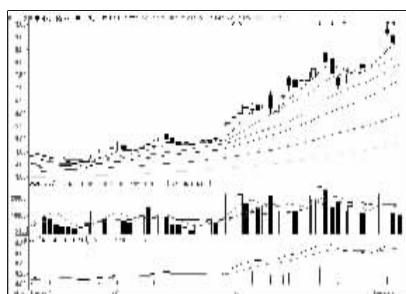
中国银行 (601988):阻力增大,谨慎持股



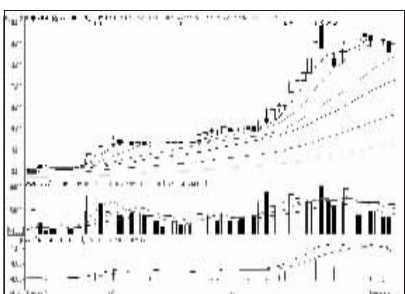
惠博普 (002554):反复筑底,保持关注



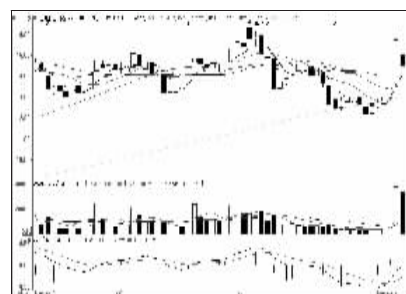
国中水务 (600187):调整空间有限,低吸



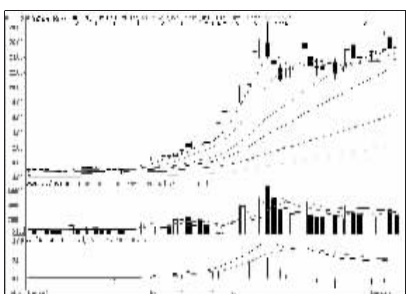
中国国航 (601111):多头形态,低吸



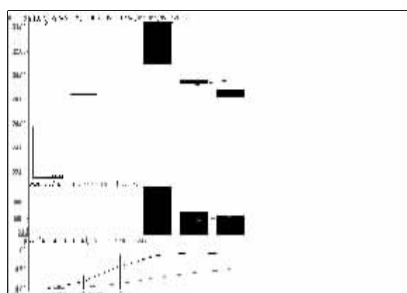
中国中铁 (601390):获利盘丰厚,谨慎



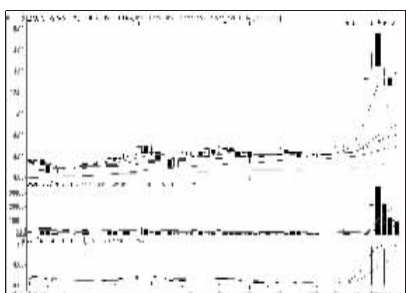
佳电股份 (000922):震荡蓄势,逢低吸纳



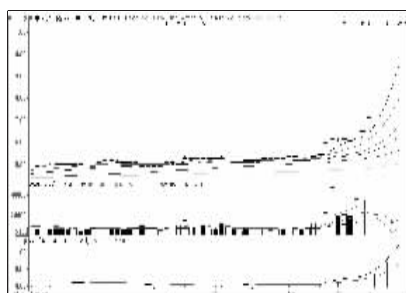
华泰证券 (601688):压力渐增,减仓观望



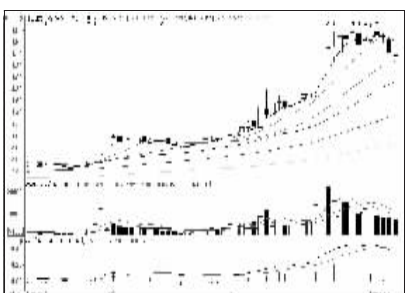
新澳股份 (603889):有望止跌,观望为主



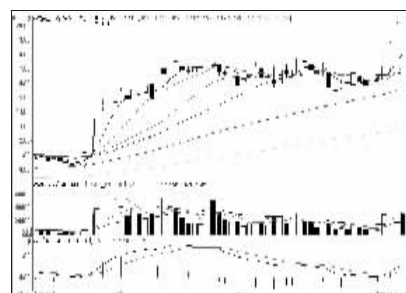
宝光股份 (600379):尚未企稳,回避



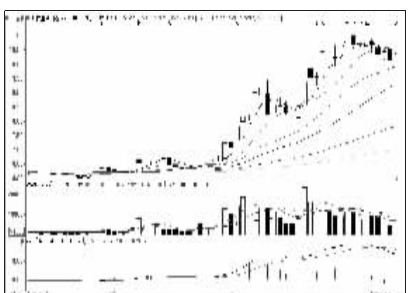
中国北车 (601299):高位放量,落袋为安



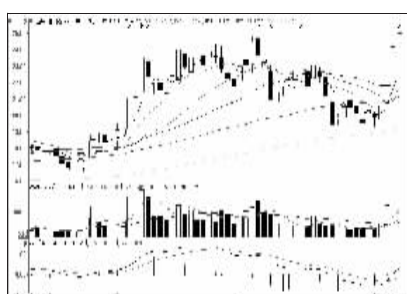
国电电力 (600795):下跌空间有限,持股



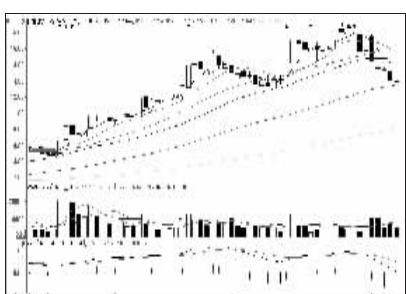
界龙实业 (600836):获利盘丰厚,观望



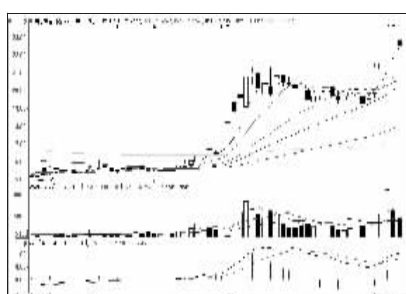
民生银行 (600016):走势偏弱,观望为宜



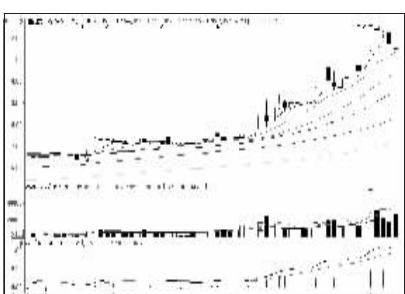
江苏神通 (002438):上升形态,适当跟进



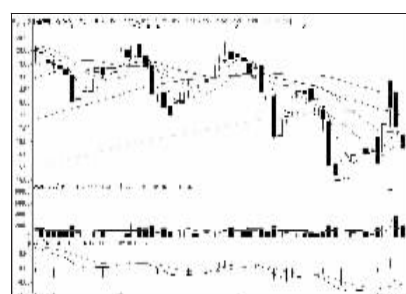
甘肃电投 (000791):形态变差,减仓观望



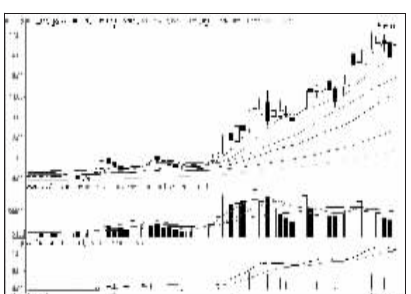
山东黄金 (600547):向上空间有限,高抛



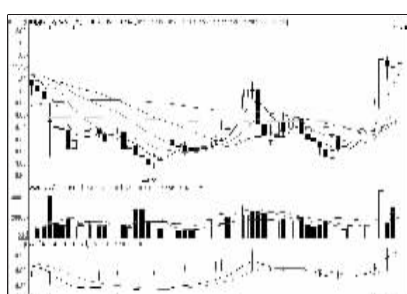
国投电力 (600886):抛压较重,出局为宜



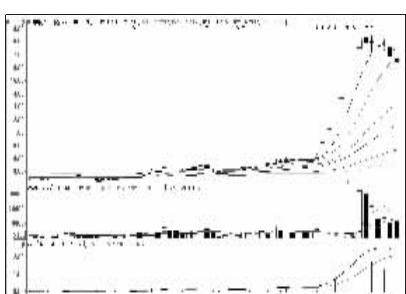
科新机电 (800092):形态变差,离场观望



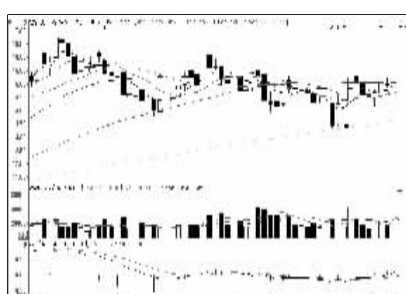
兴业银行 (601166):上攻乏力,谨慎持股



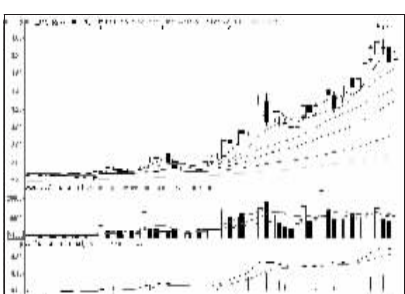
中炬高新 (600872):攻势遇阻,减仓观望



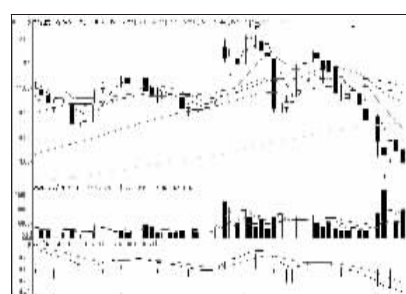
中航资本 (600705):调整走势,出局



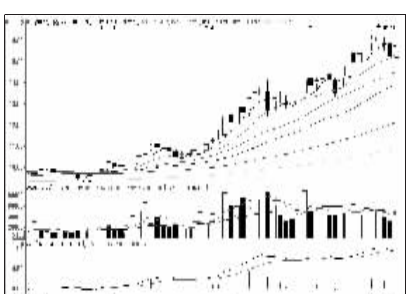
歌华有线 (600037):中期向好,逢低关注



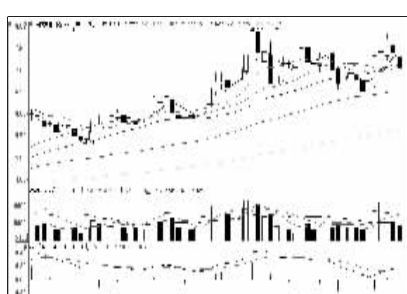
农业银行 (601288):阻力增大,谨慎持股



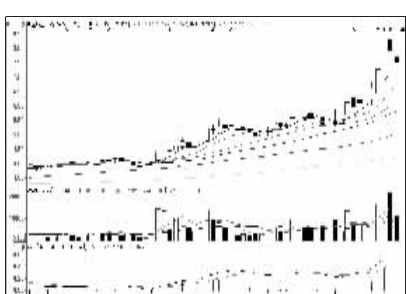
西昌电力 (600505):持续下挫,出局为主



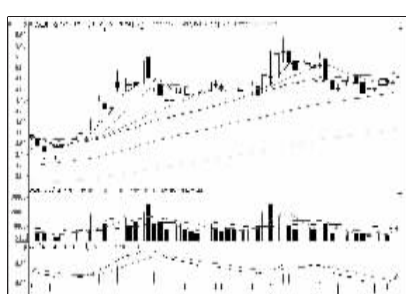
浦发银行 (600000):上攻乏力,谨慎持股



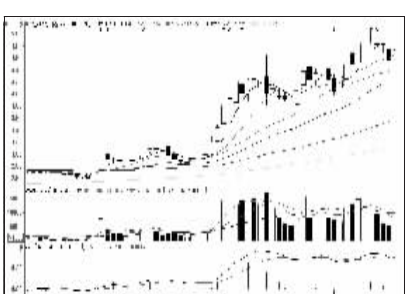
陕西煤业 (601225):短线趋弱,减仓观望



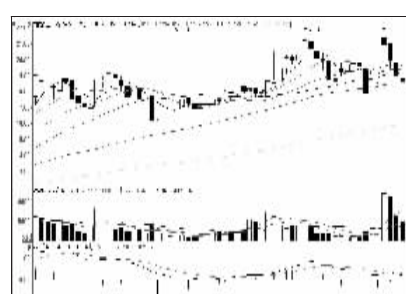
中远航运 (600428):带量下跌,兑现离场



大连港 (601880):看高一线,注意止盈



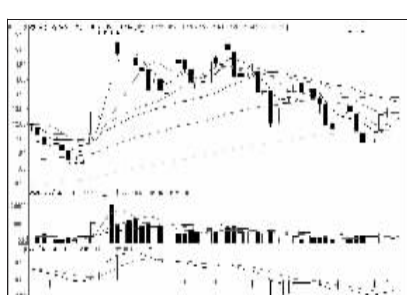
光大银行 (601818):阻力增大,谨慎持股



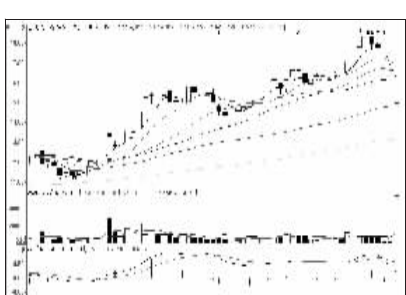
闽发铝业 (002578):出货迹象,出局为宜



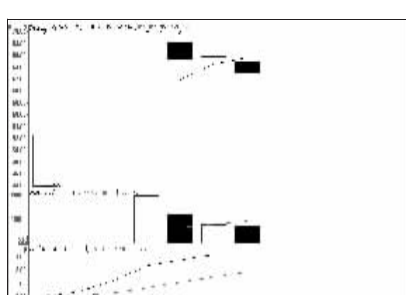
大连国际 (000881):有回调需求,不宜追涨



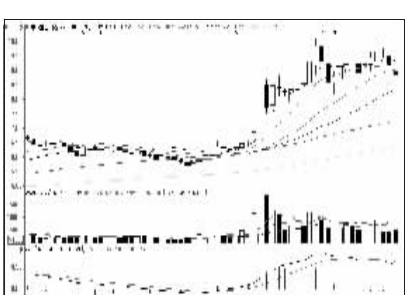
双环传动 (002472):短线企稳,中线持股



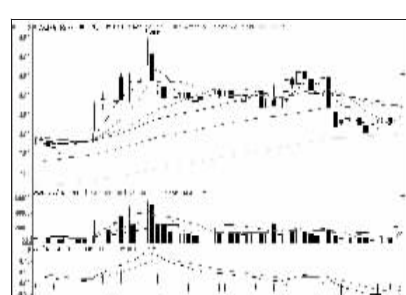
准油股份 (002207):反抽力度有限,回避



葵花药业 (002737):新股回调,观望为宜



中国重工 (601989):抛压较重,出局为宜



大连国际 (000881):有回调需求,不宜追涨



看股票 买彩票
全搞定
大智慧手机版
d.wapgw.cn