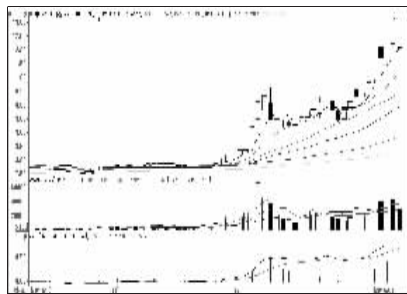


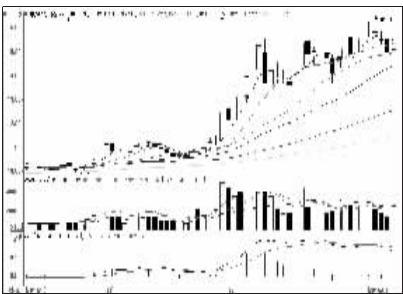
沪深10大权重股

沪市10大权重



中国石油 (601857): 压力渐增, 减仓观望

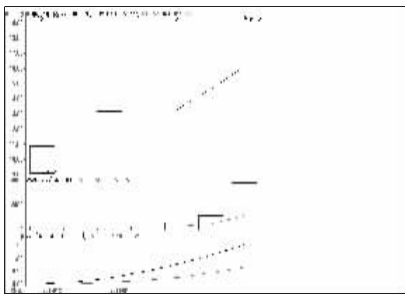
深市10大权重



平安银行 (000001): 短期头部, 落袋为安

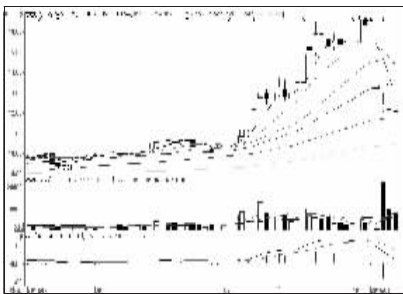
周涨跌幅前10

涨幅前10



中矿资源 (002738): 量能放大, 逐步兑现

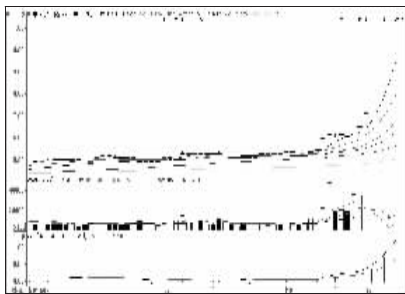
跌幅前10



秀强股份 (000160): 短线止跌, 观望为宜

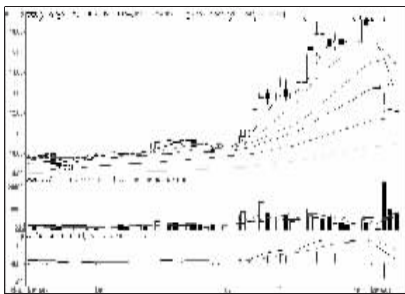
连续涨跌前10

连涨前10

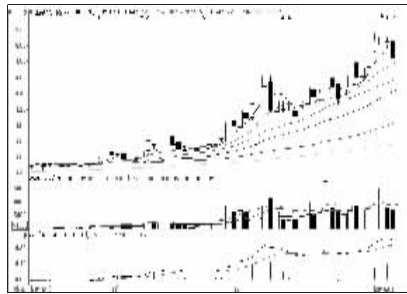


中国北车 (601299): 高位放量, 落袋为安

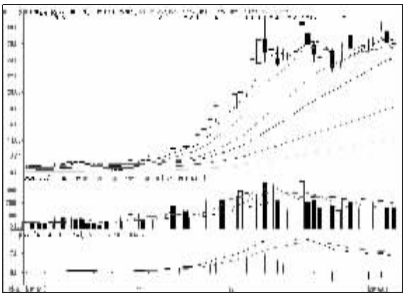
连跌前10



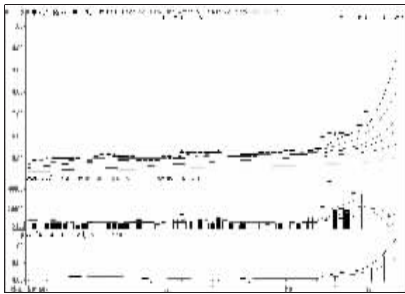
秀强股份 (000160): 短线止跌, 观望为宜



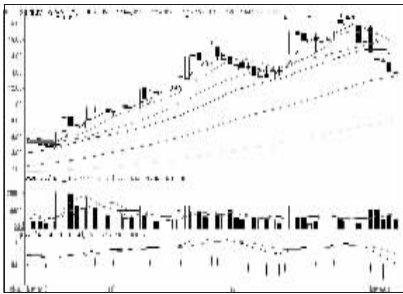
工商银行 (601398): 阻力增大, 谨慎持股



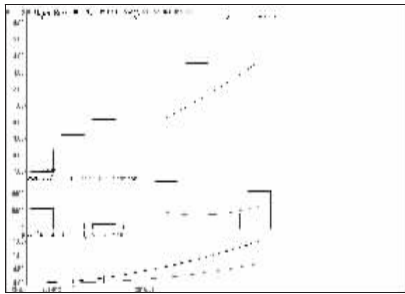
广发证券 (000776): 头部显现, 短线离场



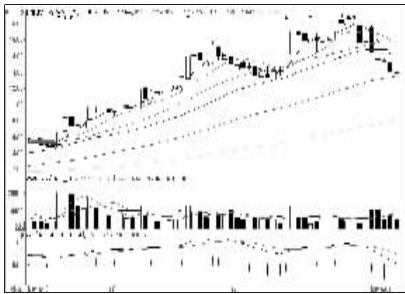
中国北车 (601299): 高位放量, 落袋为安



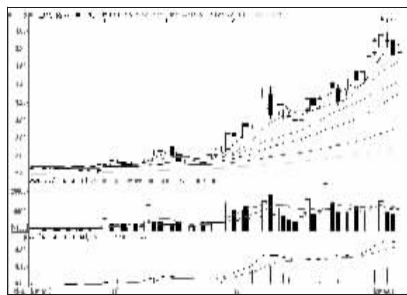
甘肃电投 (000791): 形态变差, 减仓观望



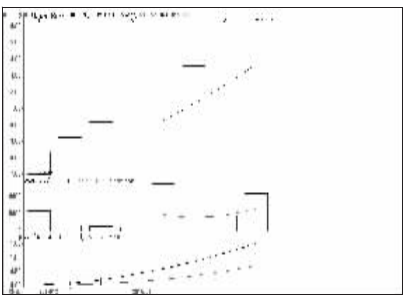
国信证券 (002736): 卖方惜售, 持股



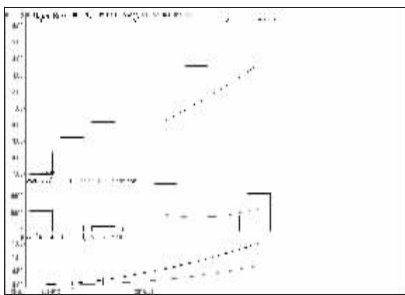
甘肃电投 (000791): 形态变差, 减仓观望



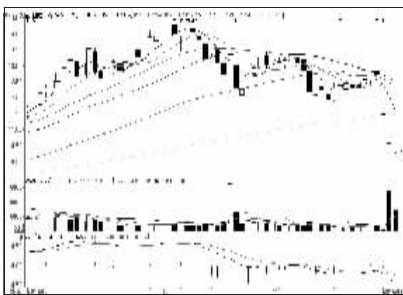
农业银行 (601288): 阻力增大, 谨慎持股



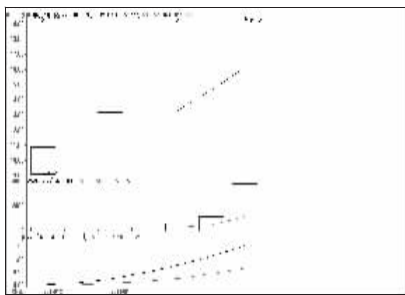
国信证券 (002736): 卖方惜售, 持股



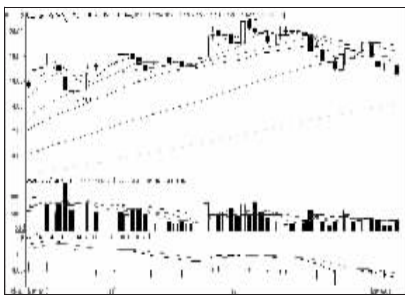
国信证券 (002736): 卖方惜售, 持股



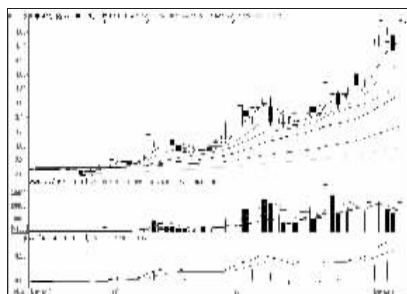
星河生物 (000143): 弱势格局, 回避



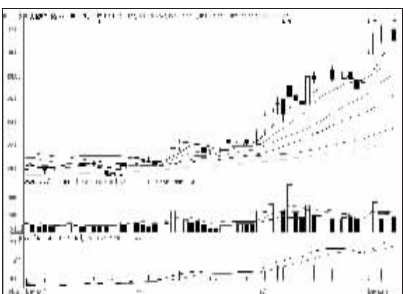
中矿资源 (002738): 量能放大, 逐步兑现



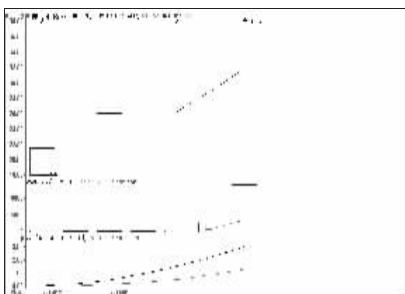
浙江众成 (002522): 仍有向下空间, 回避



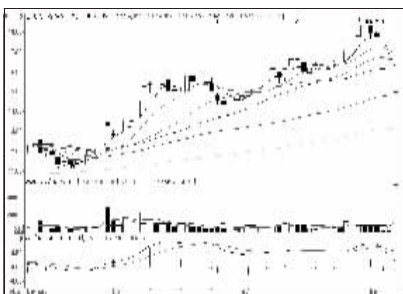
中国银行 (601983): 阻力增大, 谨慎持股



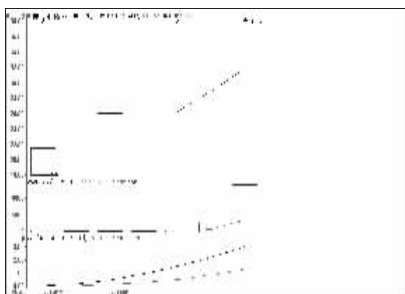
美的集团 (000333): 多头格局, 持股为主



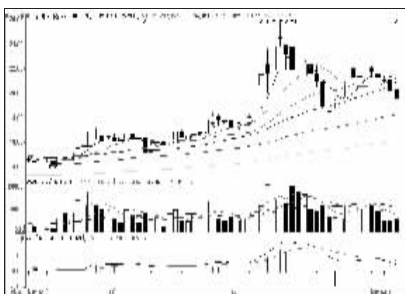
南威软件 (603636): 成交放大, 面临调整



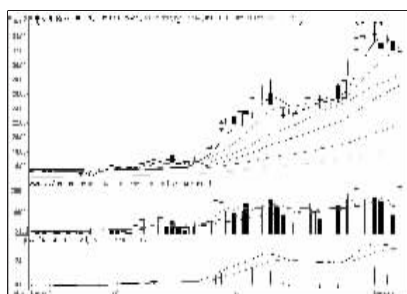
准油股份 (002207): 反抽力度有限, 回避



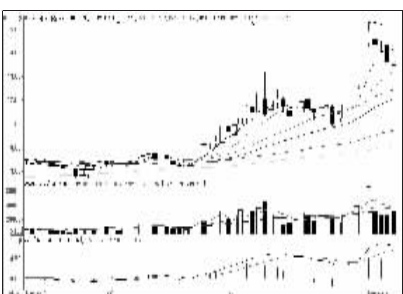
南威软件 (603636): 成交放大, 面临调整



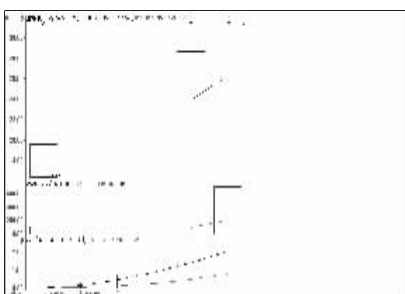
深赤湾A (000022): 短线趋弱, 减仓观望



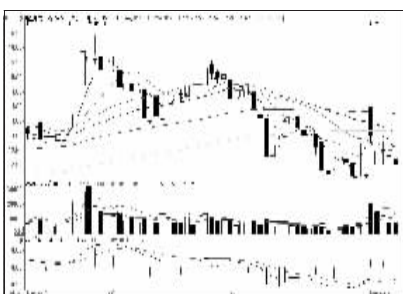
中国人寿 (601628): 强势格局, 持股为主



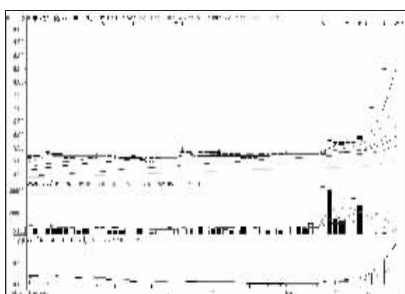
万科A (000002): 高位震荡, 观望为主



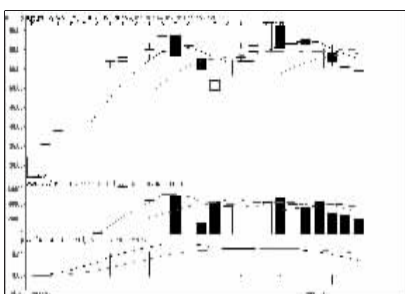
迦南科技 (000412): 关注量能, 谨慎持股



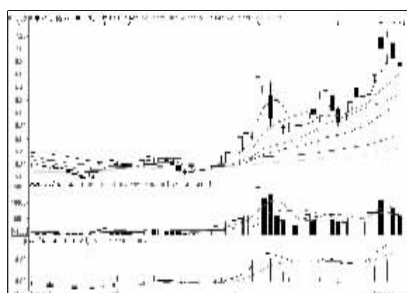
高盟新材 (000200): 年线附近有支撑



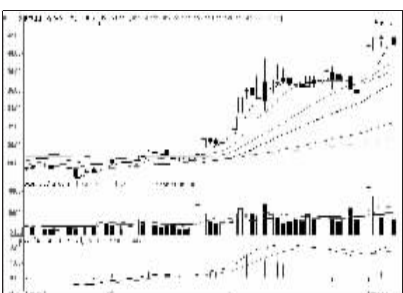
中国南车 (601766): 高位放量, 逐步兑现



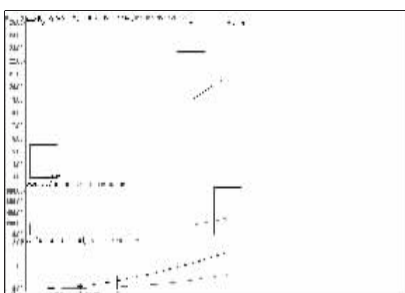
凯发电气 (000407): 步入整理, 观望为主



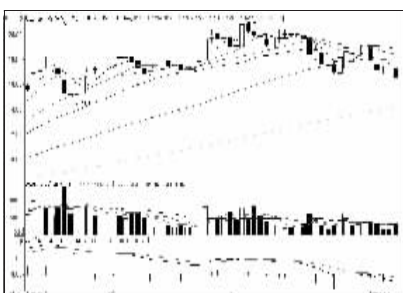
中国石化 (600028): 攻势趋弱, 减仓观望



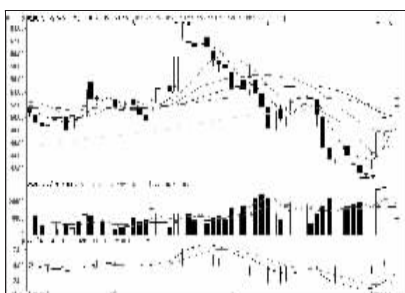
格力电器 (000651): 短线回避, 长线持股



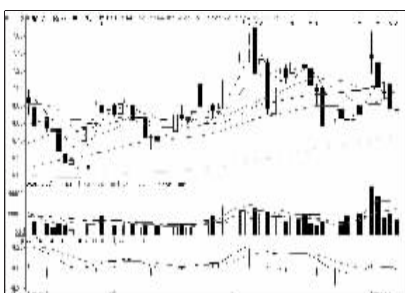
正业科技 (000410): 关注量能, 谨慎持股



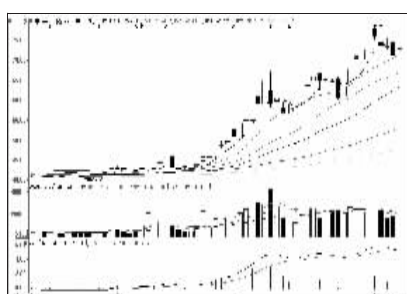
浙江众成 (002522): 仍有向下空间, 回避



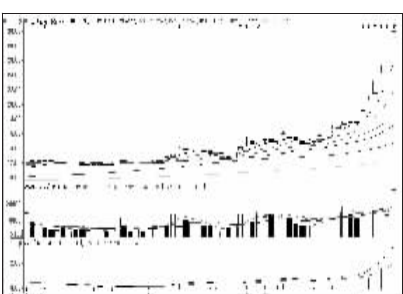
牧原股份 (002714): 半年线附近有整理需求



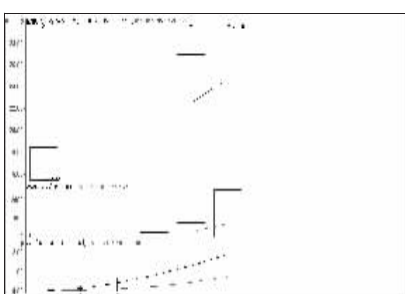
新华联 (000620): 震荡格局, 不宜介入



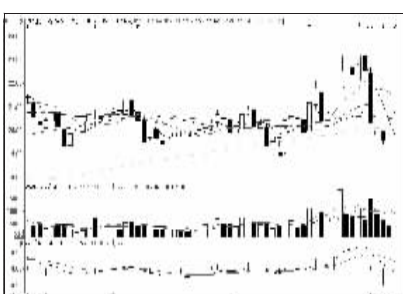
中国平安 (601318): 强势格局, 持股为主



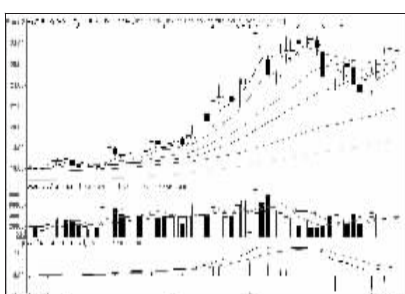
宏源证券 (000562): 停牌



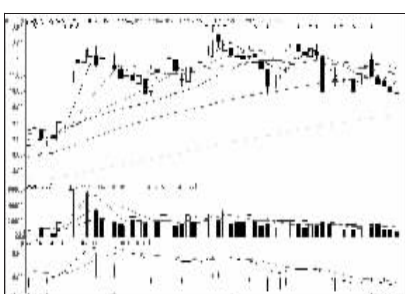
金盾股份 (000411): 关注量能, 谨慎持股



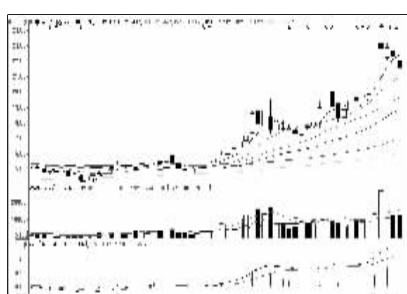
宇顺电子 (002289): 跌破多重均线, 回避



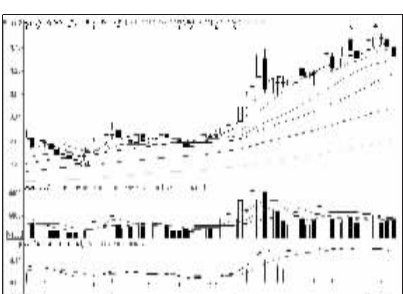
用友软件 (600588): 中线看好, 逢低介入



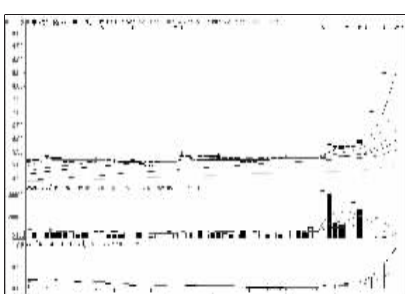
新筑股份 (002480): 走势趋弱, 离场观望



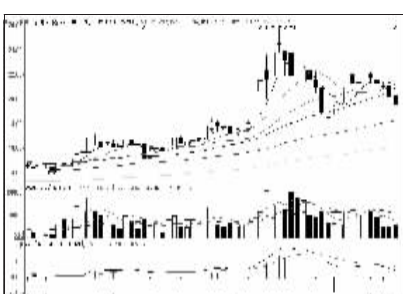
中国神华 (601088): 上方压力沉重, 观望



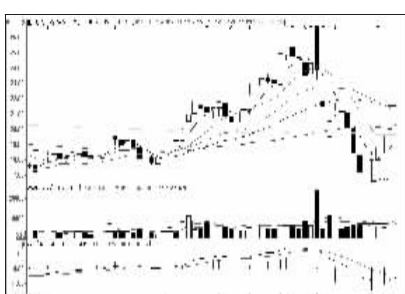
京东方A (000725): 仍有调整压力, 减仓



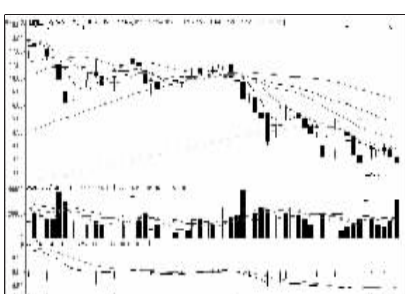
中国南车 (601766): 高位放量, 逐步兑现



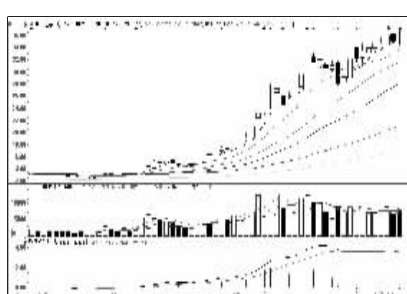
深赤湾A (000022): 短线趋弱, 减仓观望



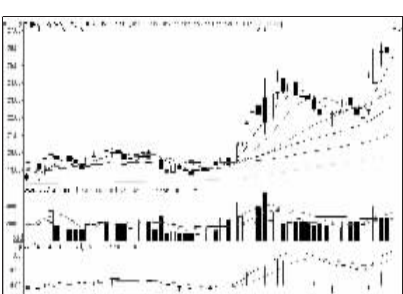
捷成股份 (000182): 压力渐增, 逢高减持



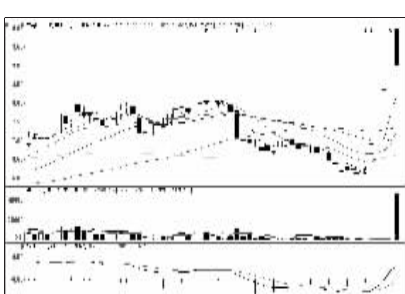
国通管业 (600444): 弱势特征明显, 出局



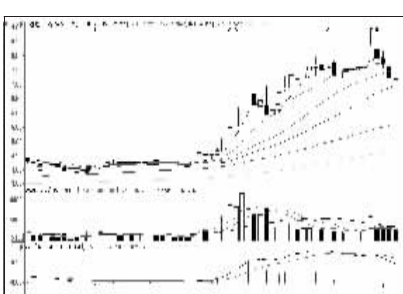
中信证券 (600030): 短线趋弱, 减仓观望



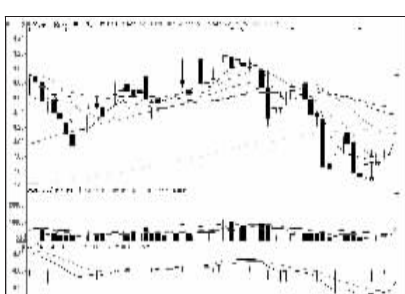
海康威视 (002415): 压力渐增, 不宜追涨



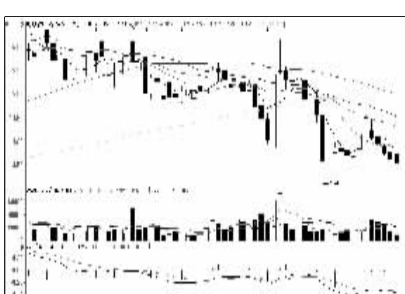
索芙特 (000662): 高位天量, 落袋为安



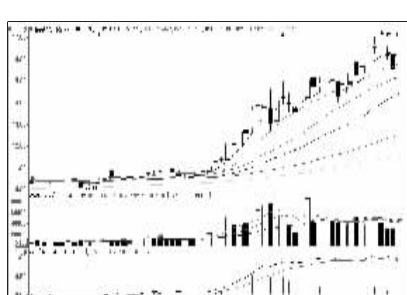
信达地产 (600657): 重归弱势, 减仓操作



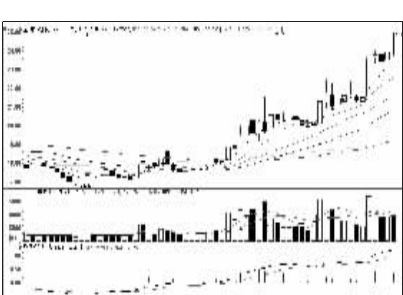
冀东装备 (000856): 进入压力区, 持股不追



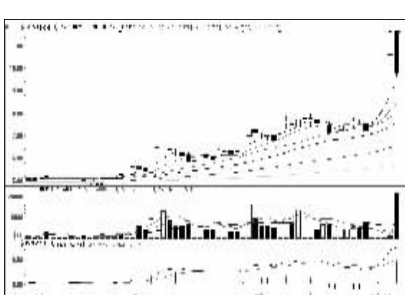
凯美特气 (002549): 弱势格局, 回避



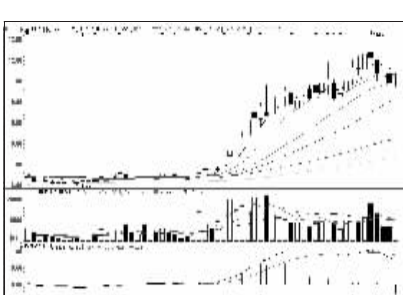
招商银行 (600036): 压力渐增, 谨慎持股



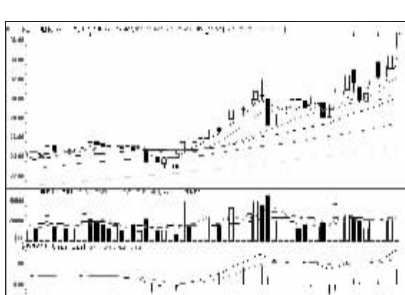
五粮液 (000858): 震荡上行, 逢低吸纳



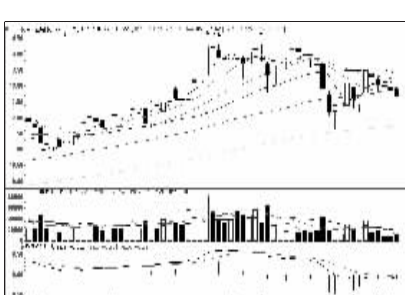
洛阳玻璃 (600876): 带量下跌, 兑现离场



金融街 (000402): 形态需巩固, 暂持股



航天信息 (600271): 多头格局, 持股



合兴包装 (002228): 走势趋弱, 离场观望