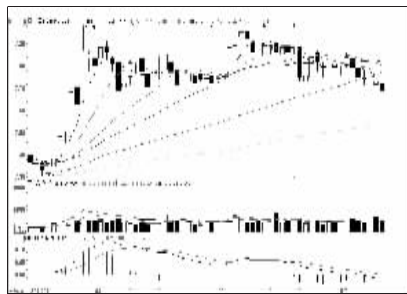


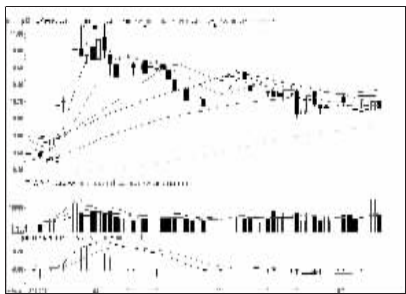
沪深10大权重股

沪市10大权重



中国石油(601857):跌破半年线,谨慎

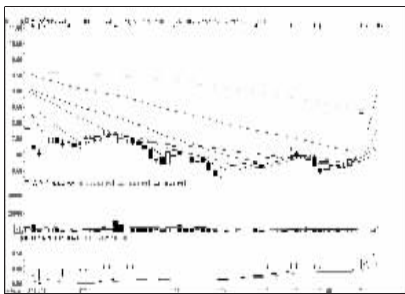
深市10大权重



平安银行(000001):弱势震荡,谨慎为宜

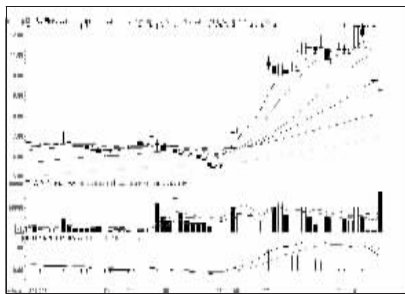
周涨跌幅前10

涨幅前10



金城股份(000820):涨势未尽,持股观望

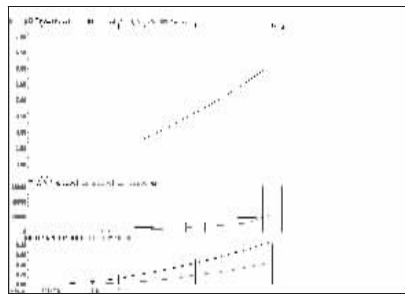
跌幅前10



中科云网(002306):打开跌停,尝试低吸

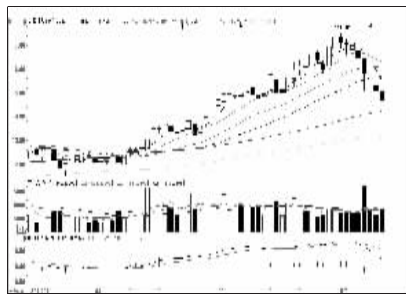
连续涨跌前10

连涨前10

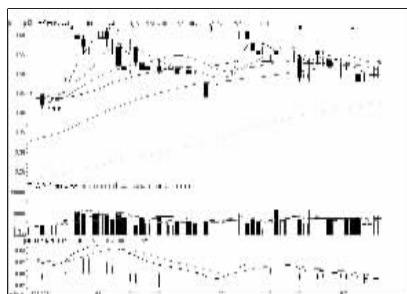


节能风电(601016):成交放大,适当止盈

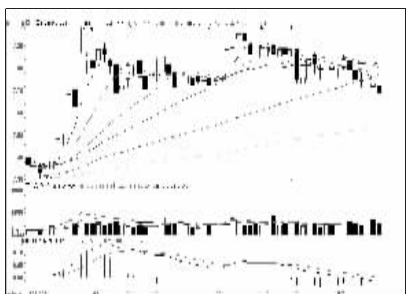
连跌前10



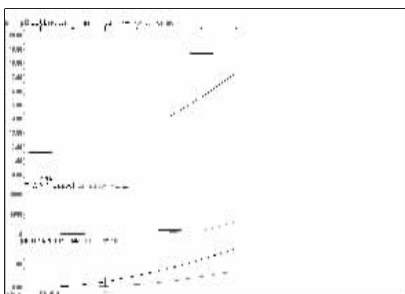
天源迪科(000047):弱势特征明显,离场



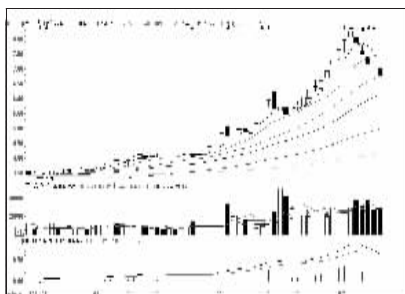
工商银行(601398):面临选择,观望为宜



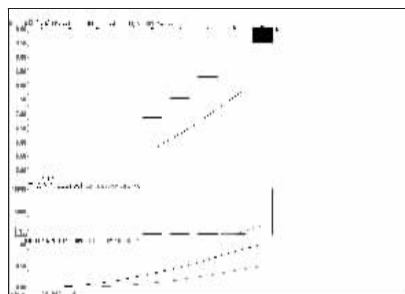
万科A(000002):空头世道,出局为宜



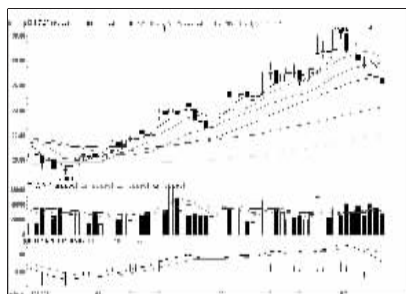
电光科技(002730):连续涨停,继续持有



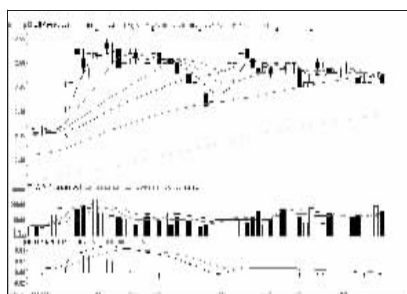
*ST三鑫(002163):有望企稳,低位关注



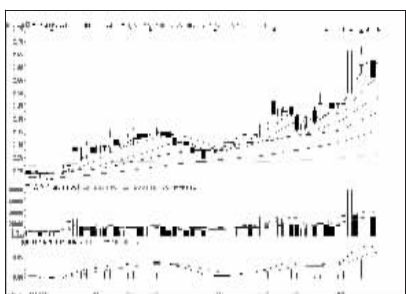
重庆燃气(600917):打开涨停,谨防调整



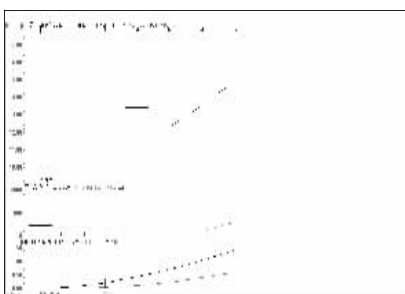
超图软件(000036):再展涨势,离场为妙



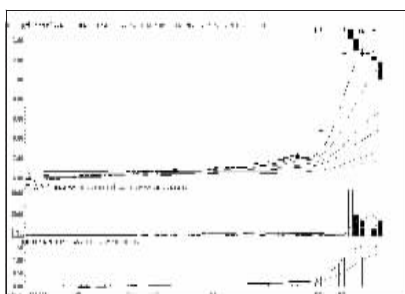
农业银行(601288):面临选择,观望为宜



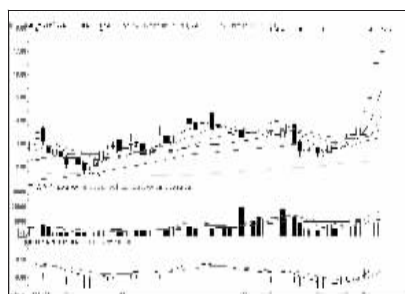
京东方A(000725):或有后戏,低吸为主



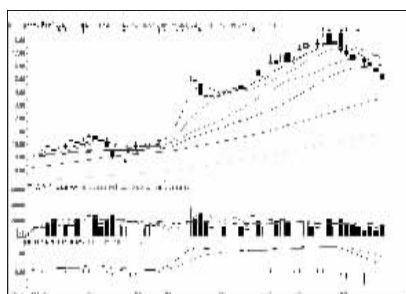
花园生物(000401):炒作未完,继续持有



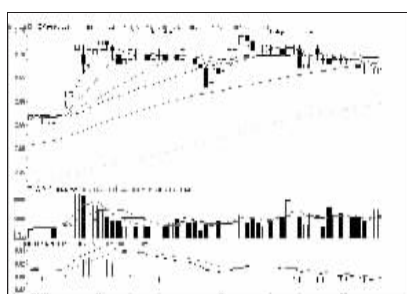
禾嘉股份(600093):回调幅度不大,低吸



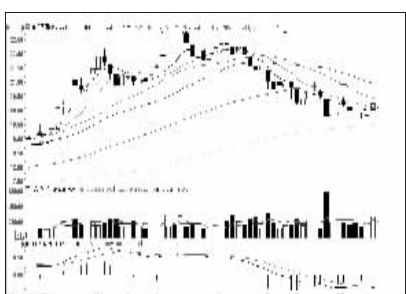
英唐智控(000131):涨幅可观,兑现获利



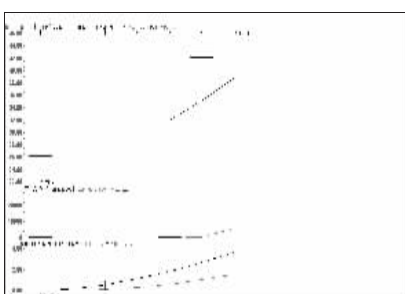
北京旅游(000802):弱势特征明显,出局



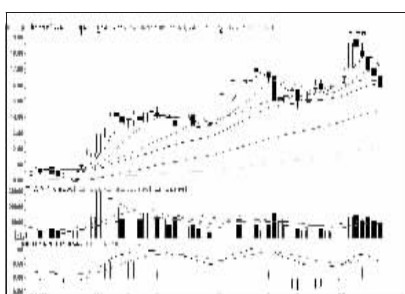
中国银行(601988):震荡拉锯,离场观望



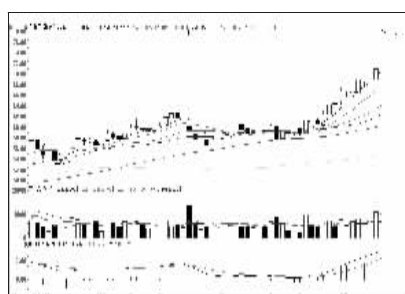
美的集团(000333):弱势反弹,建议谨慎



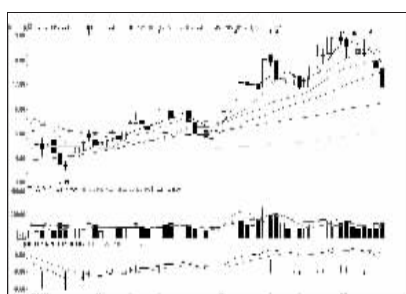
飞凯材料(000398):获利可观,适当兑现



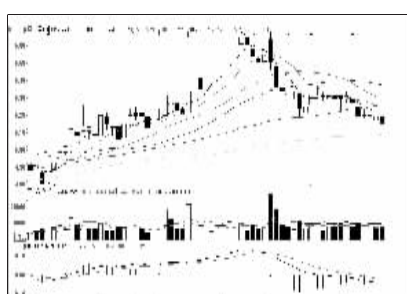
拓邦股份(002139):再现跌势,离场为主



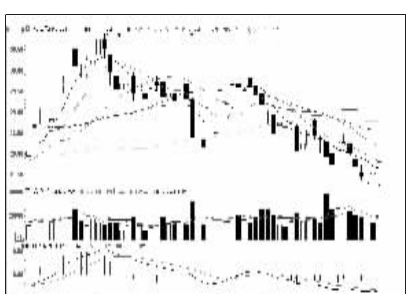
友邦吊顶(002718):看涨谨防回调,不追涨



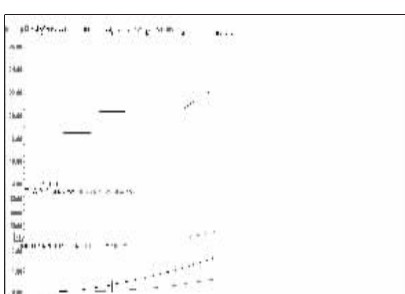
中海达(000177):重现跌势,出局为主



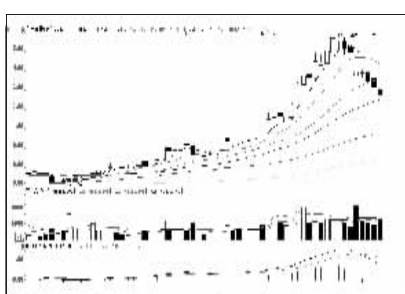
中国石化(600028):跌破半年线,谨慎



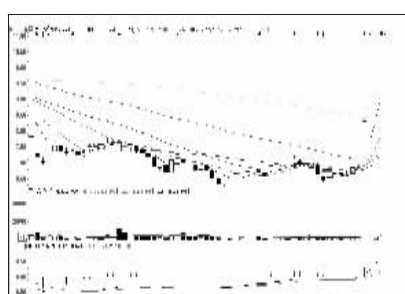
格力电器(000651):下跌趋势,换股操作



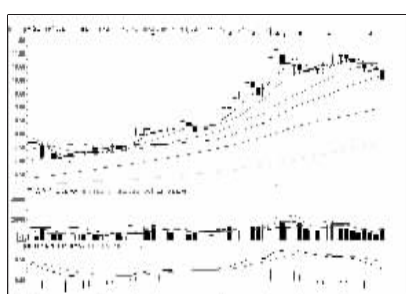
万盛股份(603010):分歧加剧,谨防回调



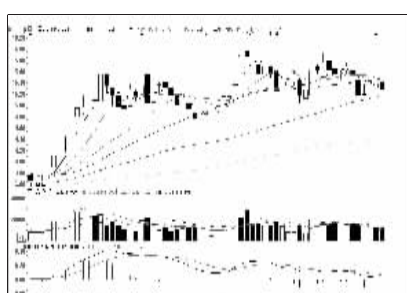
皇台酒业(000995):趋势走坏,建议减磅



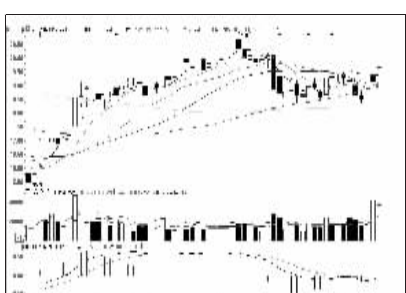
金城股份(000820):涨势未尽,持股观望



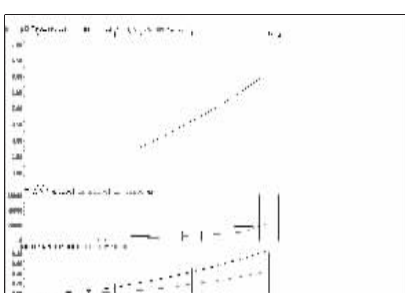
金新农(002548):弱势格局,换股操作



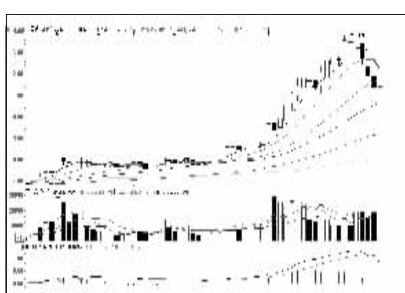
中国人寿(601628):考验均线支撑,观望



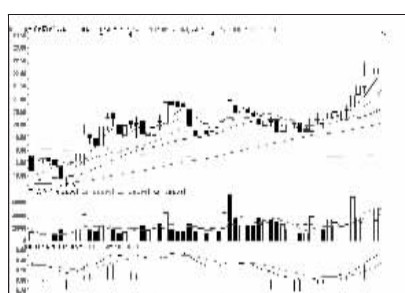
海康威视(002415):买气增加,持有为主



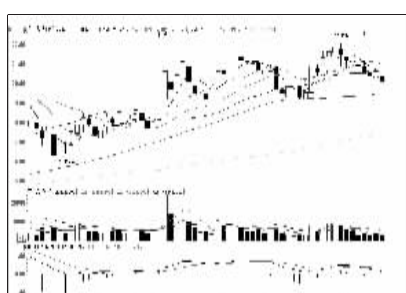
节能风电(601016):成交放大,适当止盈



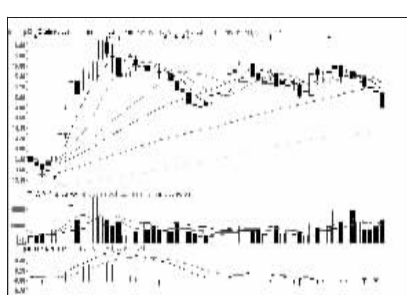
中国武夷(000797):短线企稳,暂时观望



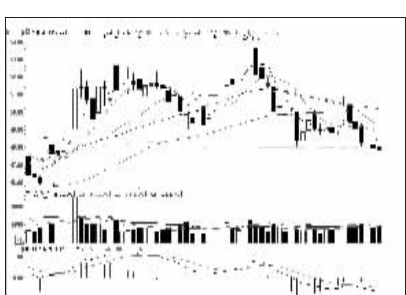
金鸿能源(000669):多方力量强大,看涨



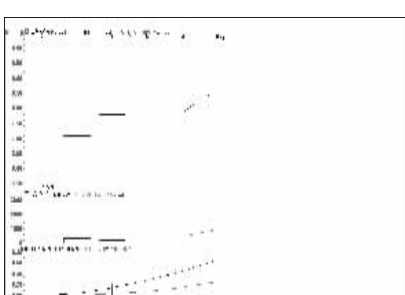
方正科技(000235):仍有下跌风险



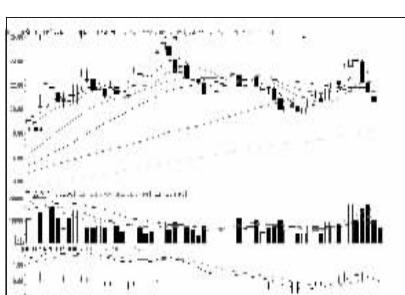
中国神华(601088):跌势加剧,建议止损



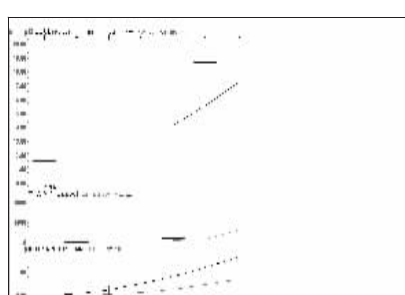
比亚迪(002594):走势偏弱,换股为宜



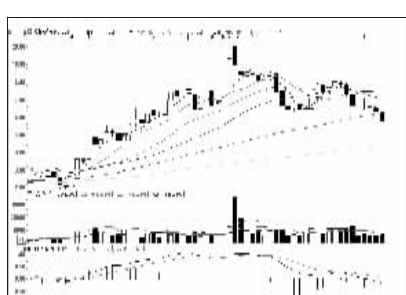
宝色股份(000402):卖盘稀少,继续持有



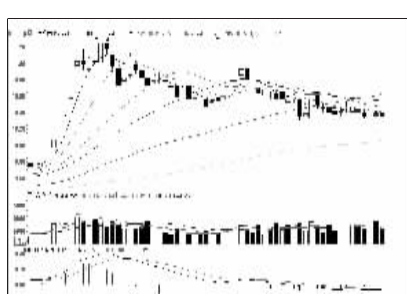
多氟多(002407):震荡格局,尝试低吸



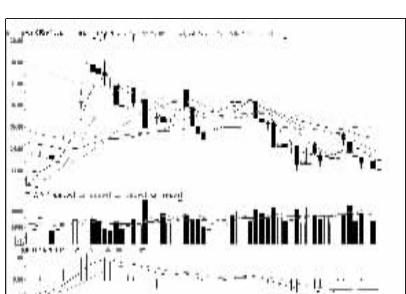
电光科技(002730):连续涨停,继续持有



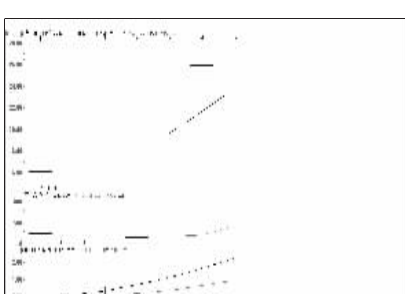
银邦股份(000337):有加速下跌可能



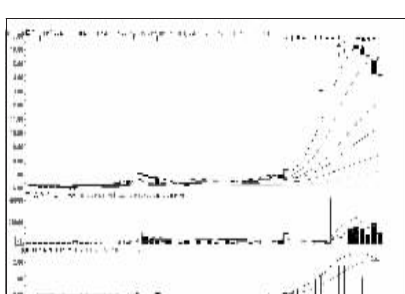
招商银行(600036):弱势格局,出局为宜



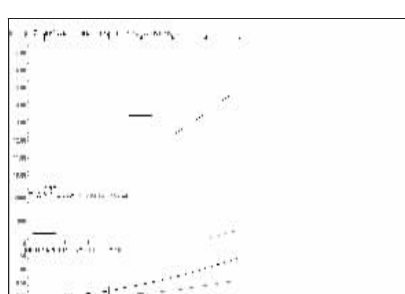
双汇发展(000895):横盘震荡,等待选择



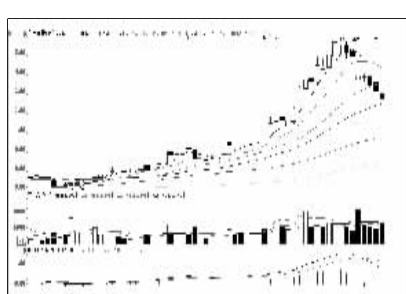
京天利(000399):多头惜售,继续持有



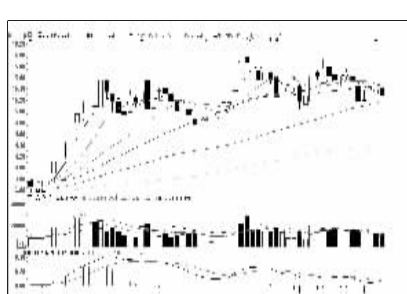
国投中鲁(600962):买气减弱,落袋为安



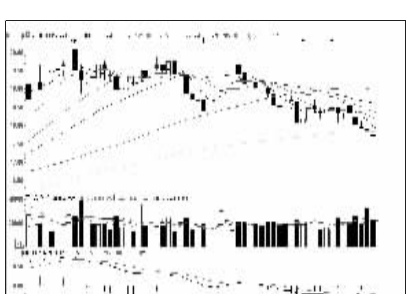
花园生物(000401):炒作未完,继续持有



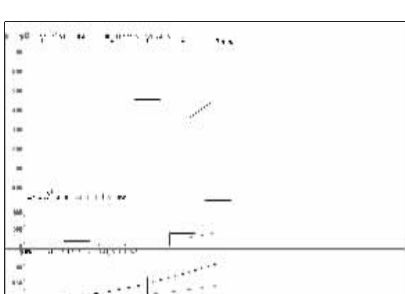
皇台酒业(000995):趋势走坏,建议减磅



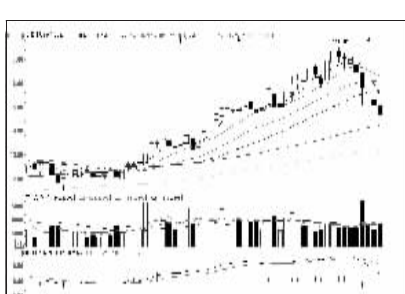
中国平安(601318):延续下行态势,减仓



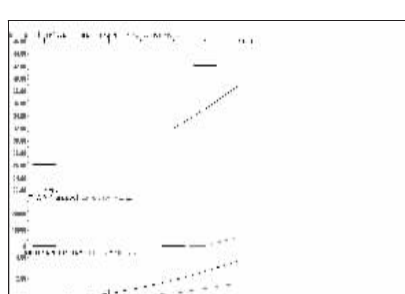
五粮液(000858):跌势企稳,谨慎观望



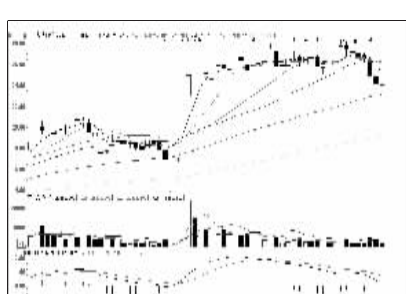
劲拓股份(000400):成交稀少,看高一线



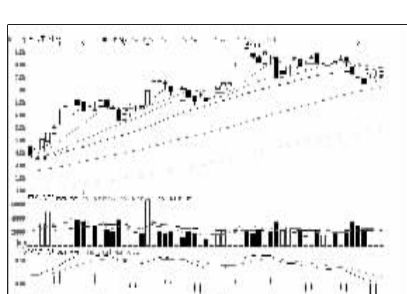
天源迪科(000047):弱势特征明显,离场



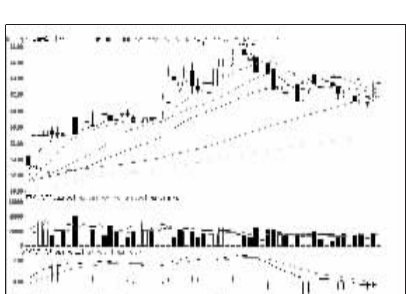
飞凯材料(000398):获利客观,适当兑现



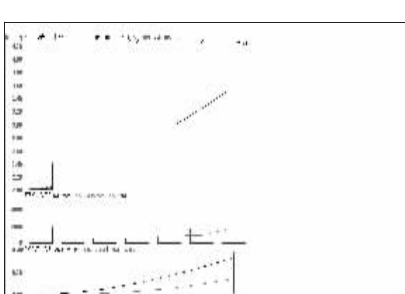
光一科技(000356):可以看空,出局为宜



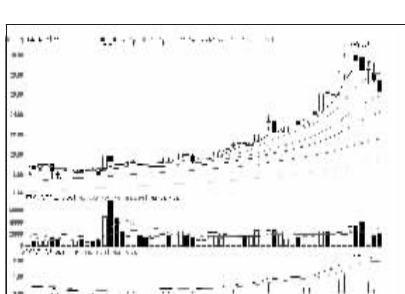
上汽集团(600104):短线弱势不改,离场



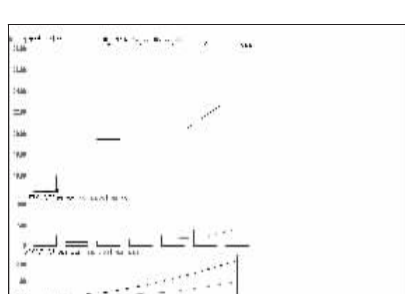
洋河股份(002304):企稳反弹,持股观望



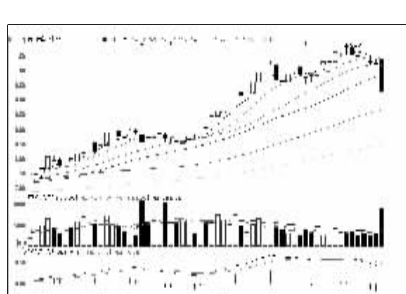
兰石重装(603169):连续涨停,继续持有



东华测试(000354):上行能量萎缩,高抛



京天利(000399):多头惜售,继续持有



百川股份(002455):主力打压明显,离场