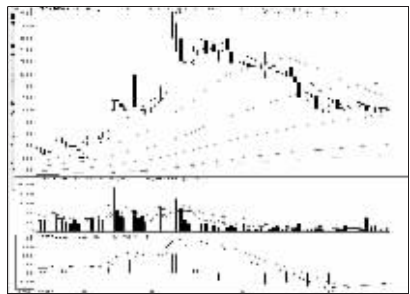


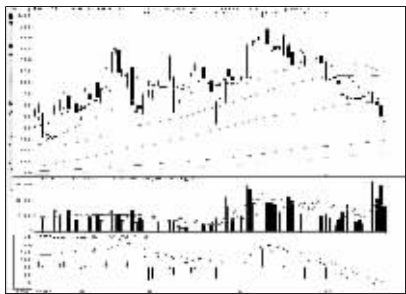
股东人数增减前10

股东人数减少前10



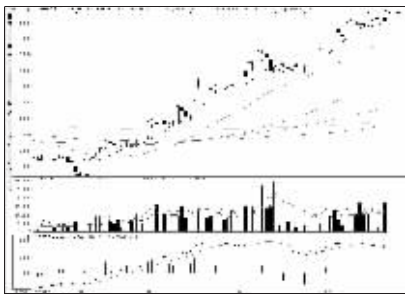
通光线缆 (800265):弱势格局,换股

股东人数增加前10



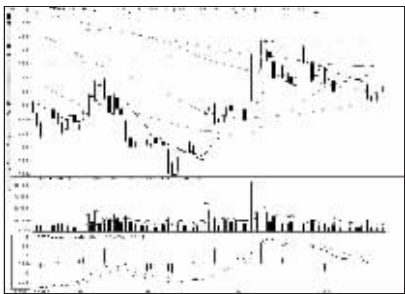
梅安森 (600275):空头占据主动,出局

资金流入金额前10



万向德农 (600371):上升形态完好,持有

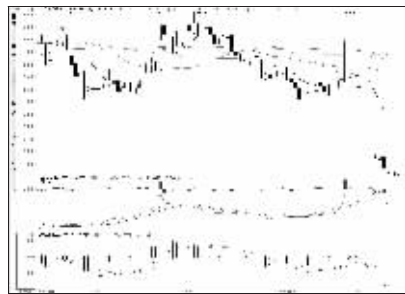
资金流出金额前10



兴业银行 (601166):弱势不改,谨慎为妙

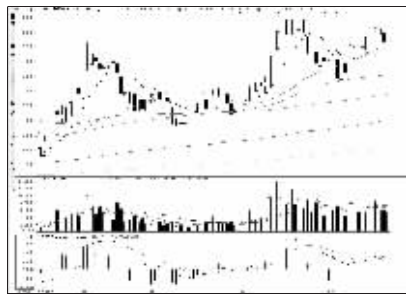
周成交金额

成交突增前10

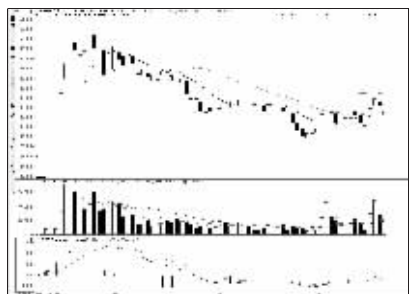


*ST新业 (600075):有继续下行可能

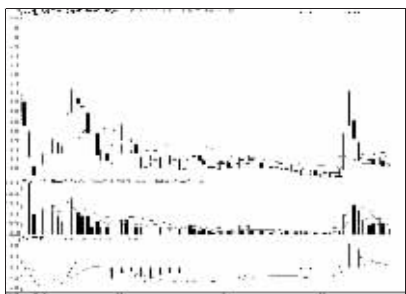
成交金额前8



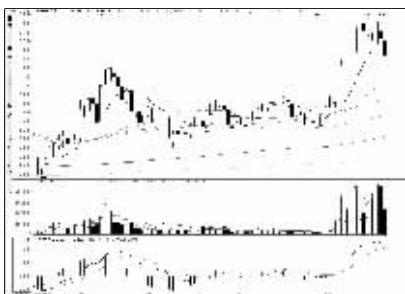
中体产业 (600158):震荡形态,波段操作



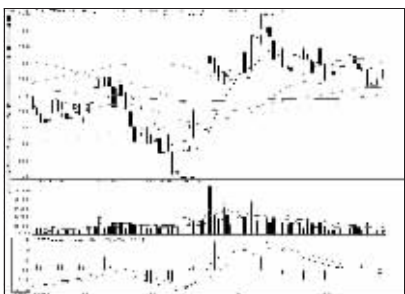
创意信息 (800366):走势属多头格局



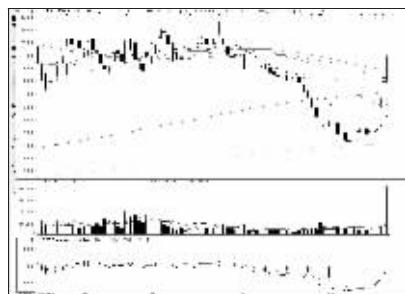
陕西煤业 (601225):横向整理,观望



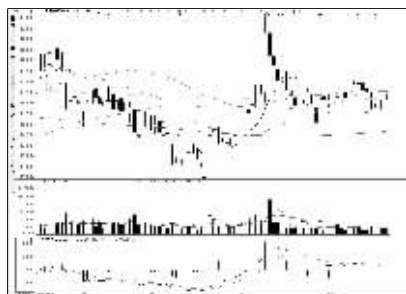
北巴传媒 (600386):谨防调整,兑现获利



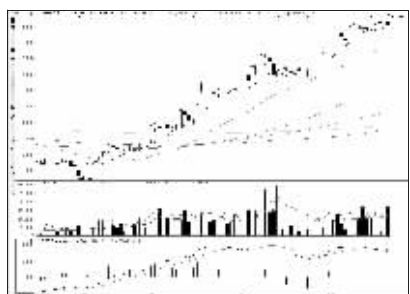
浦发银行 (600000):区间整理,观望为宜



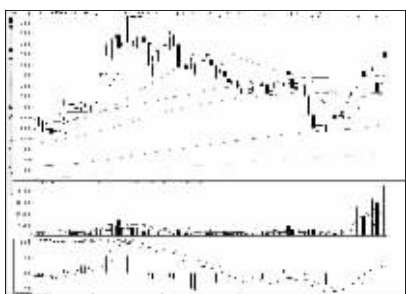
中国软件 (600536):短线反弹,保持观望



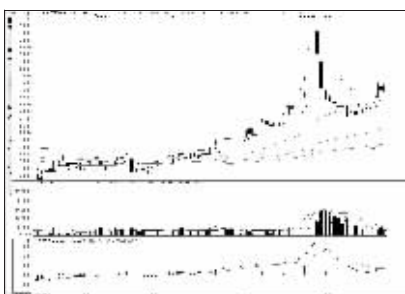
中国平安 (601318):蓄势整理,持股观望



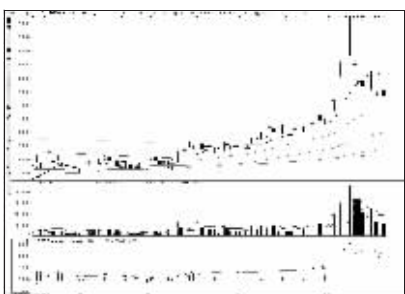
万向德农 (600371):上升形态完好,持有



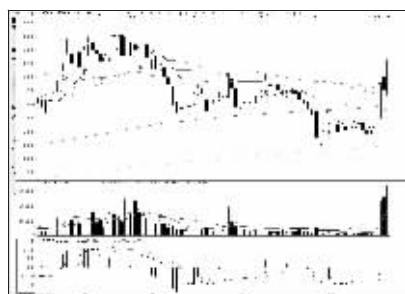
玉龙股份 (601028):回调幅度不大,低吸



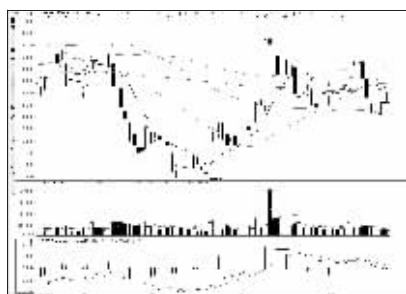
金地集团 (600383):上行趋势,继续持有



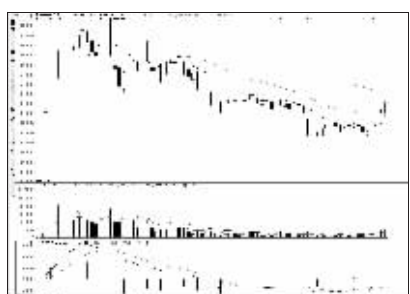
吉恩镍业 (600432):回调充分,继续持有



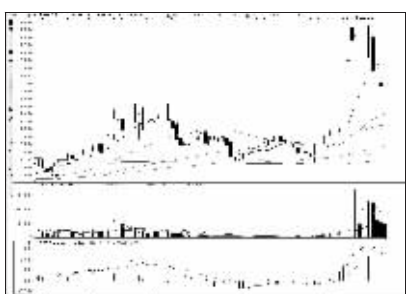
浪潮软件 (600756):有回调压力,观望



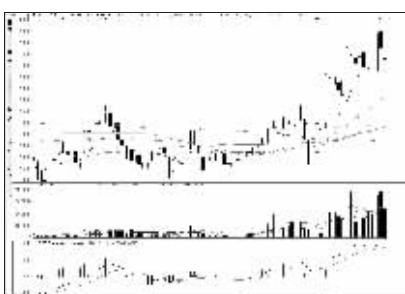
中信证券 (600030):区间震荡,波段操作



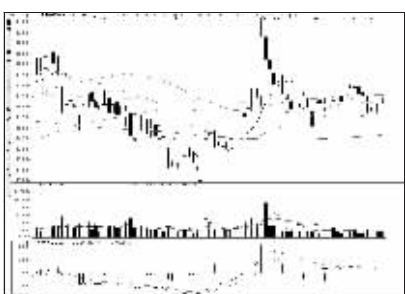
思美传媒 (002712):多头格局,跟进为主



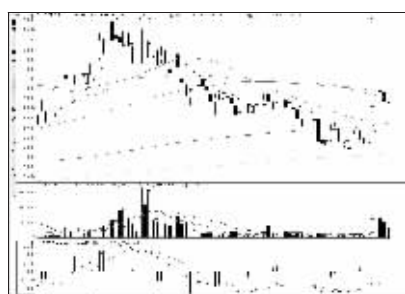
恒顺电气 (600208):主力惜售,或有反弹



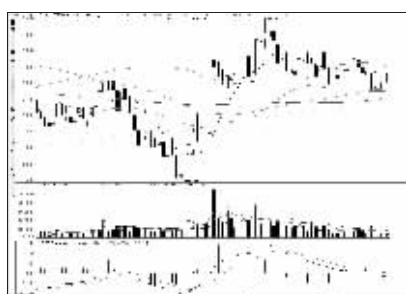
全柴动力 (600218):上攻能量不足



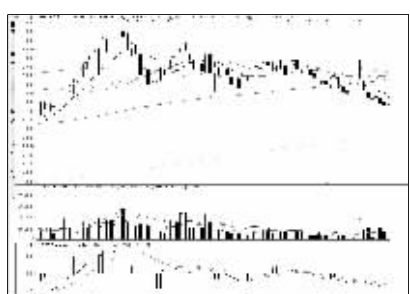
中国平安 (601318):蓄势整理,持股观望



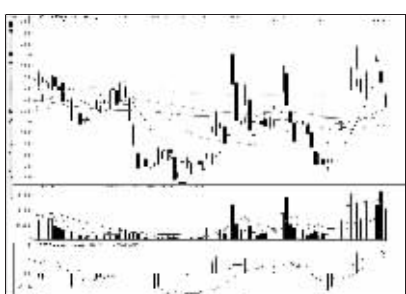
齐心文具 (002301):买气有所减弱,出货



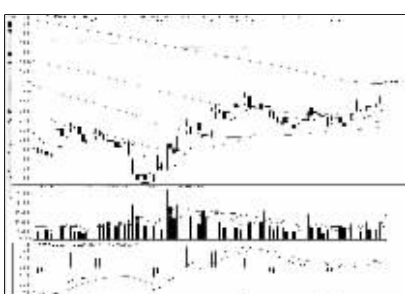
浦发银行 (600000):区间整理,观望为宜



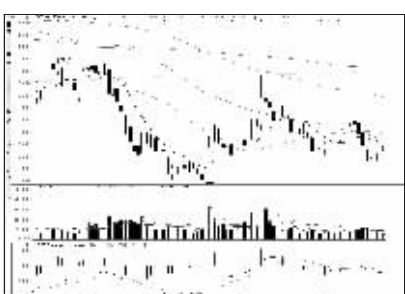
华峰氨纶 (002064):弱势格局,注意风险



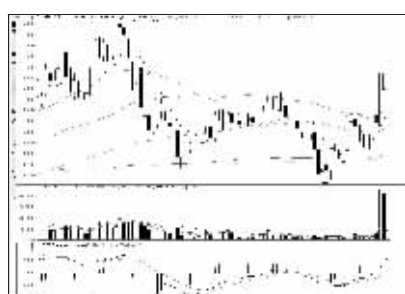
三湘股份 (000863):上攻动能衰竭,减磅



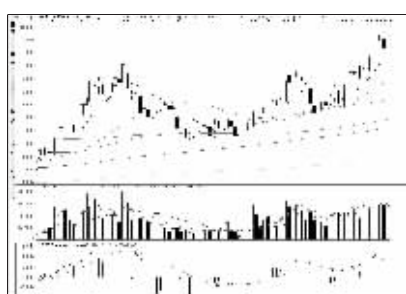
万科A (000002):调整压力加大,观望



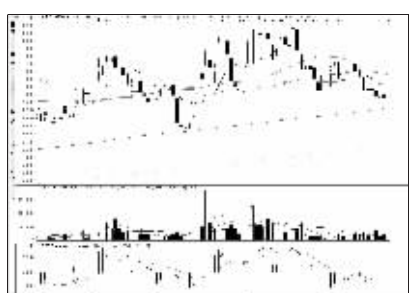
海通证券 (600837):区间整理,观望为宜



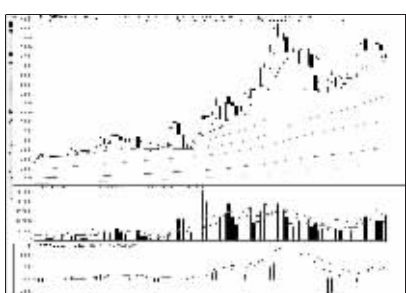
西部材料 (002149):形态需要巩固,不追涨



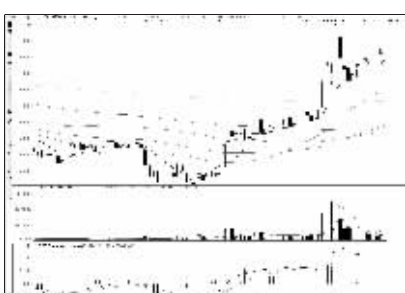
安徽股份 (002235):高位整理,持股观望



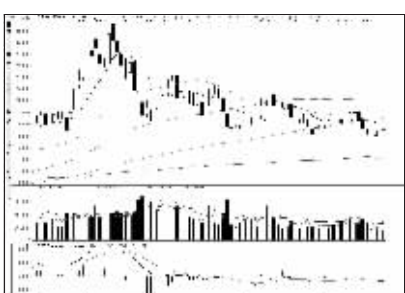
亚太科技 (002540):空头占据主动,换股



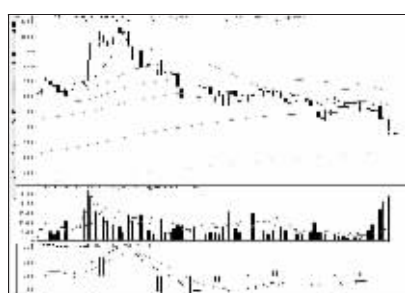
康达新材 (002669):弱势格局,出局为宜



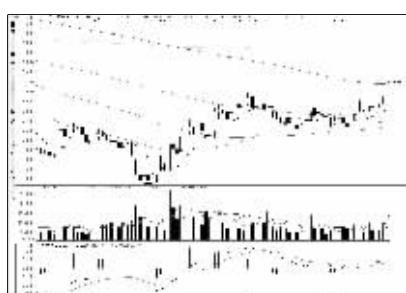
金融街 (000402):谨防回调,莫追高



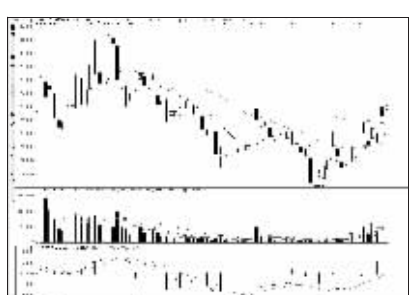
国金证券 (600109):低位企稳,谨慎观望



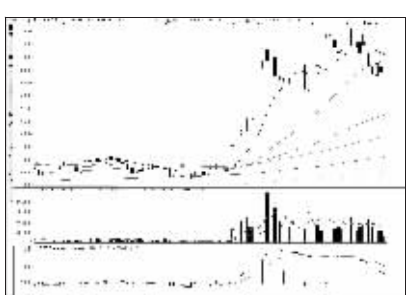
亚太药业 (002370):破位下跌,止损



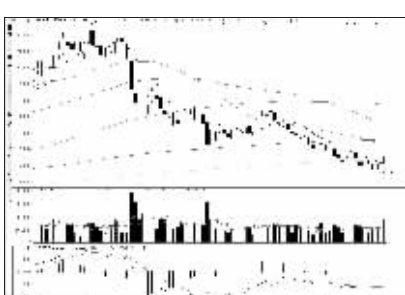
万科A (000002):调整压力加大,观望



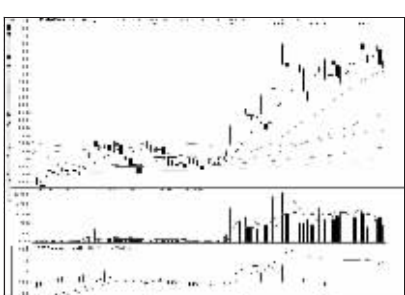
安控科技 (800370):下行有支撑,近期不跟



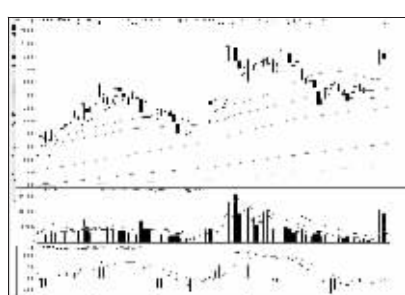
金山股份 (600396):空头占据主动,谨慎



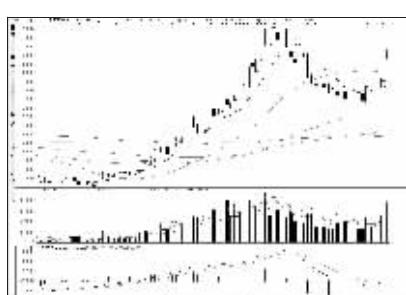
青岛海尔 (600690):低位反弹,观望为宜



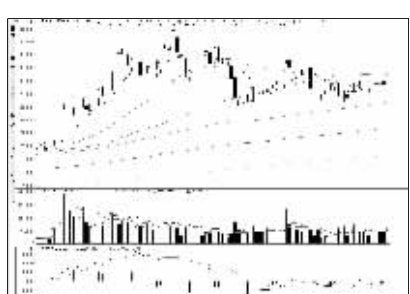
新疆城建 (600545):高位震荡,持股观望



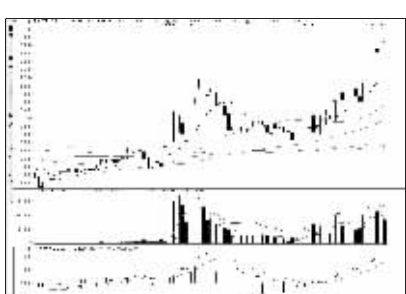
久其软件 (002279):调整压力加大



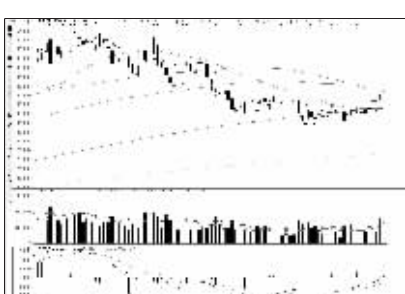
廊坊发展 (600149):获利可观,适当减磅



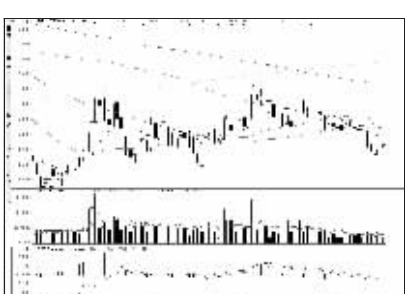
姚记扑克 (002605):区间震荡,暂可持有



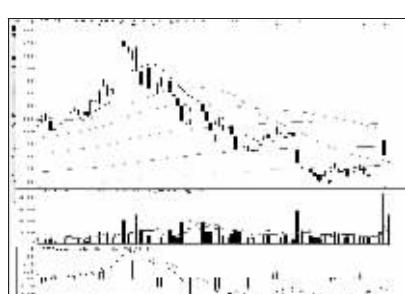
中航黑豹 (600760):谨防调整,逢高减磅



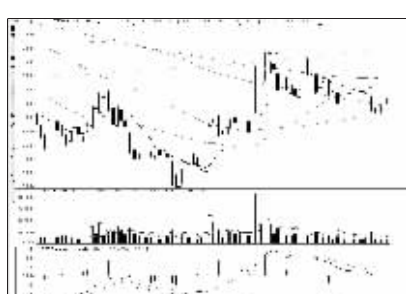
乐视网 (800104):强势特征明显,跟进



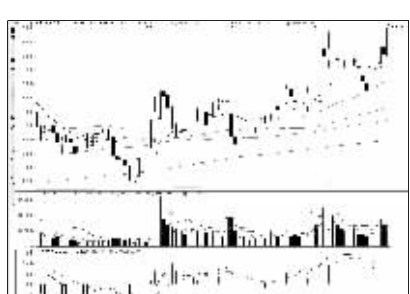
民生银行 (600016):弱势格局,出局为宜



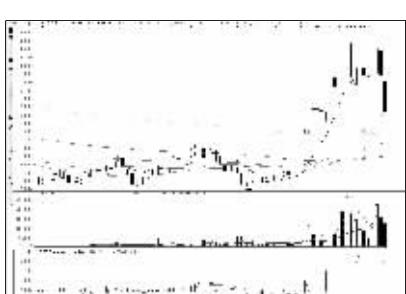
新界泵业 (002532):弱势格局,出局



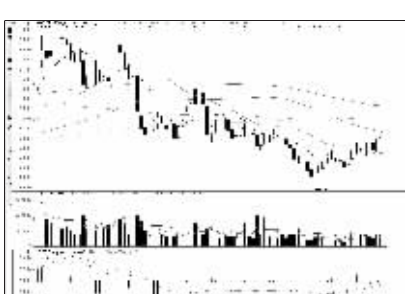
兴业银行 (601166):弱势不改,谨慎为妙



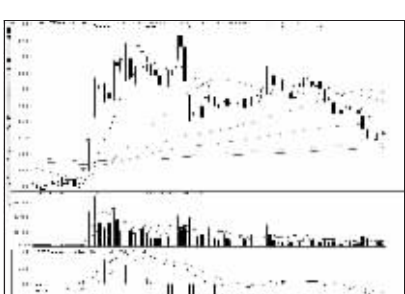
博通股份 (600455):多头格局,继续持有



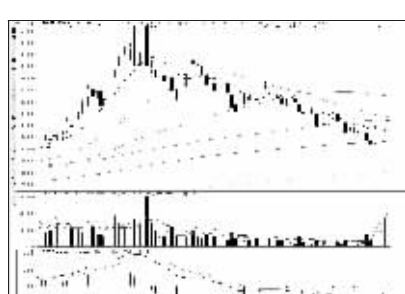
云煤能源 (600792):或将企稳,观望为宜



德豪润达 (002005):上升趋势,继续持有



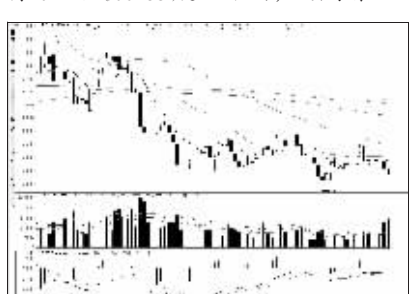
中信银行 (601998):低位企稳,暂时观望



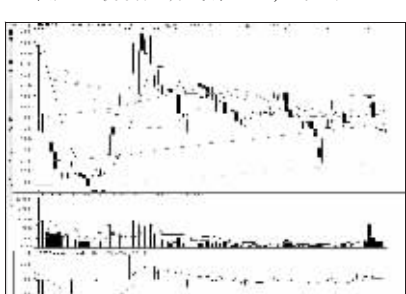
北信源 (800352):多方力量强大,持有



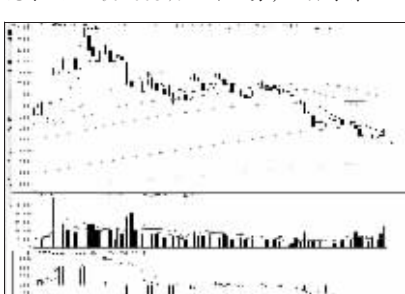
茂硕电源 (002660):震荡格局,换股



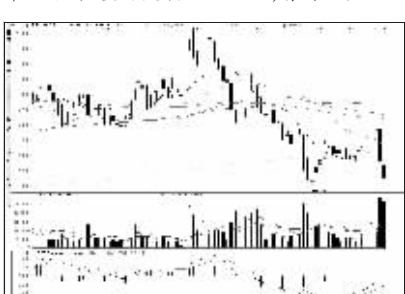
唐人神 (002567):主力打压明显,出局



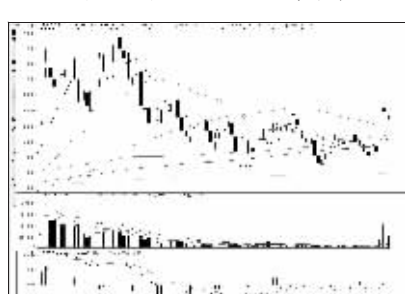
华塑控股 (000509):短线弱势不改,减仓



上海机电 (600835):弱势反弹,观望为宜



宇通客车 (600066):下跌格局,减仓为主



茂硕电源 (002660):震荡格局,换股



看股票 买彩票
全搞定
大智慧手机版
d.wapgw.cn