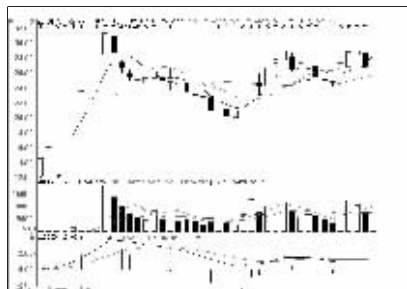


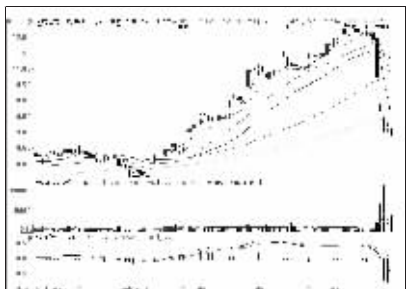
股东人数增减前10

股东人数减少前10



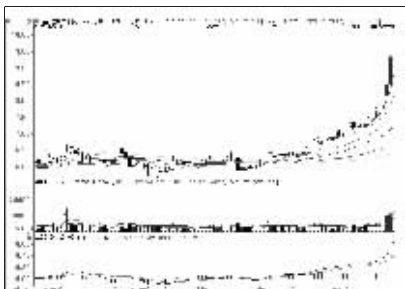
登云股份 (002715):高位震荡概率大

股东人数增加前10



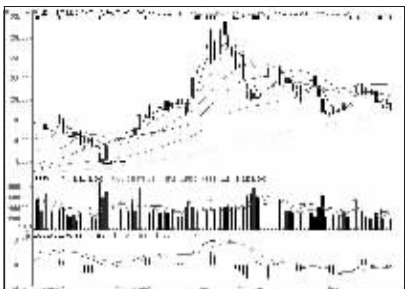
涪陵电力 (600452):破位急跌,观望为宜

资金流入金额前10



金地集团 (600383):仍或震荡上涨

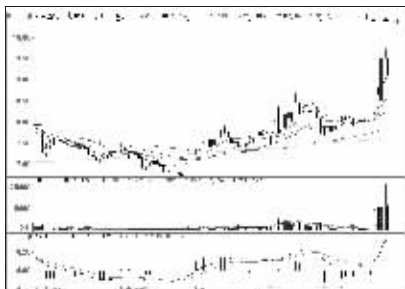
资金流出金额前10



国金证券 (600109):弱势格局,观望

周成交金额

成交突增前10

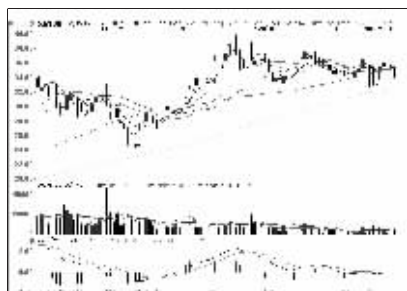


云南盐化 (002053):短线或区间震荡

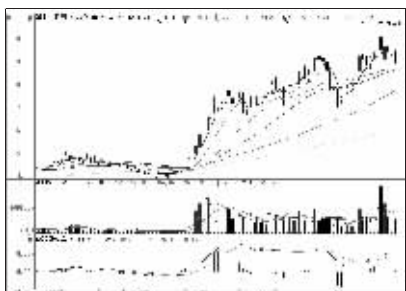
成交金额前8



浦发银行 (600000):震荡整理概率大



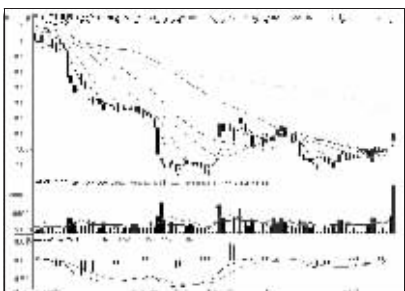
旋极信息 (800324):警惕下行风险



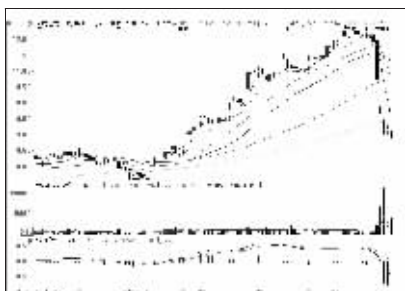
强生控股 (600662):区间震荡概率大



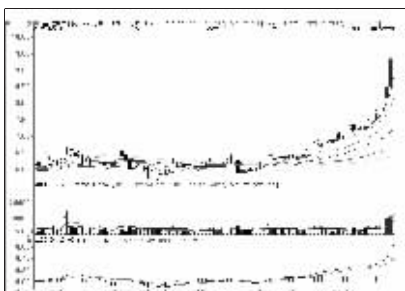
兴业银行 (601166):仍有反弹空间



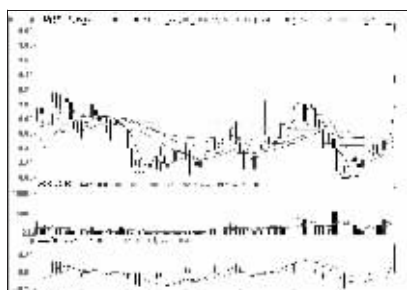
广汇能源 (600256):仍有反弹可能



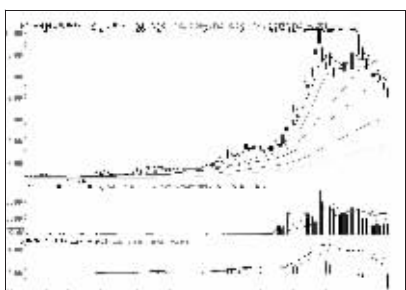
涪陵电力 (600452):破位急跌,观望为宜



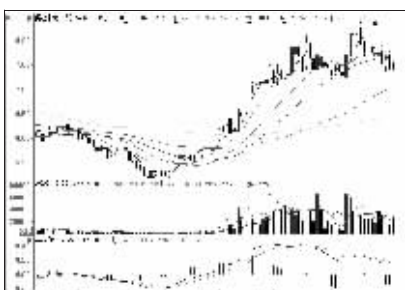
金地集团 (600383):仍或震荡上涨



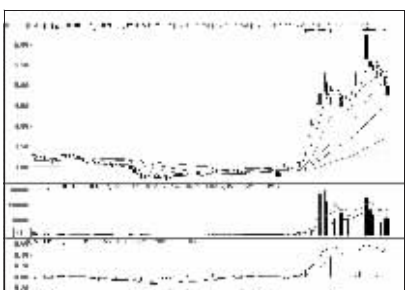
云煤能源 (600792):短期或有反复



宝硕股份 (600155):短线或有反弹



福建水泥 (600802):仍有回调可能



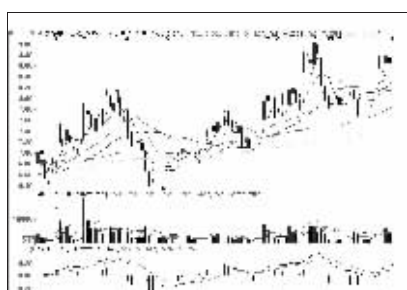
唐山港 (601000):短线或震荡反弹



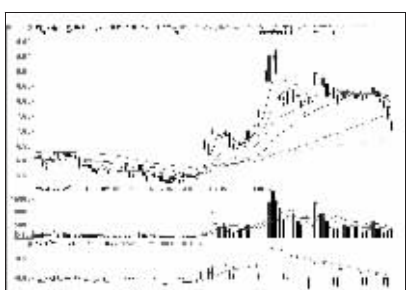
润和软件 (800339):仍有震荡上涨可能



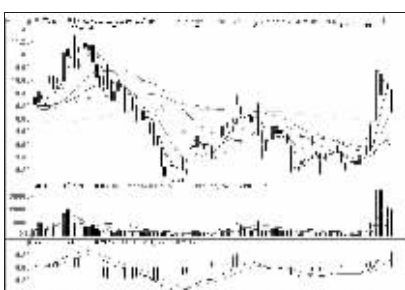
兴业银行 (601166):仍有反弹空间



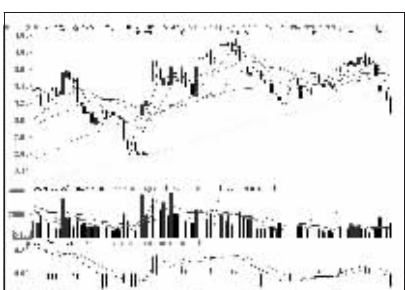
泰尔重工 (002347):震荡走高概率大



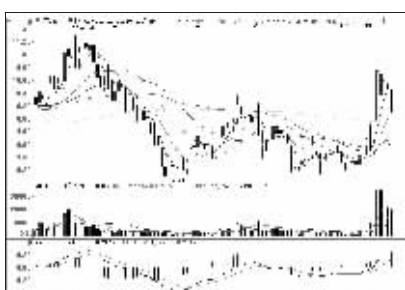
同济科技 (600846):破位下行,回避



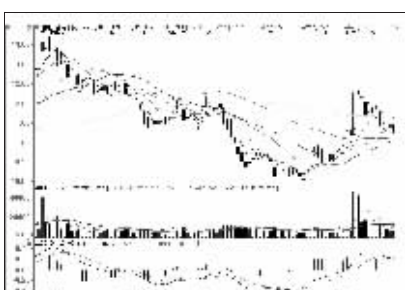
三峡水利 (600116):弱势难改,观望



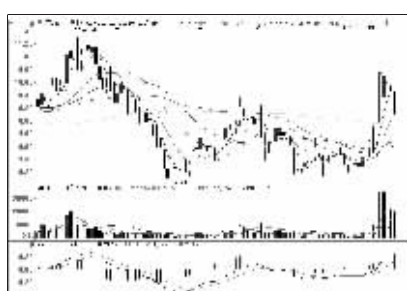
四川长虹 (600839):破位下行,观望



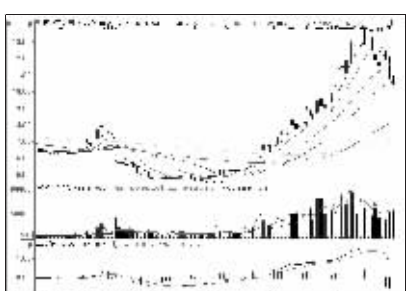
三峡水利 (600116):弱势难改,观望



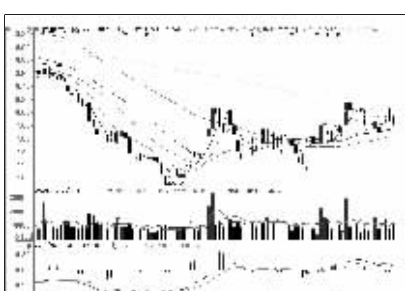
中信证券 (600030):弱势格局,观望



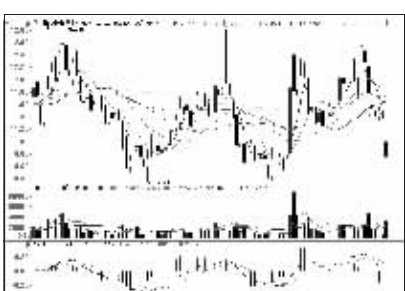
三峡水利 (600116):弱势难改,观望



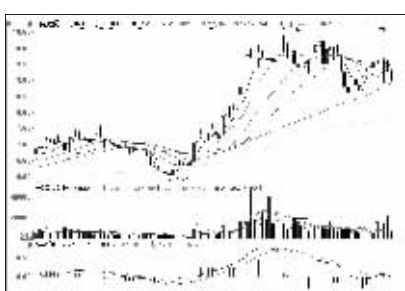
廊坊发展 (600149):持续回调,观望



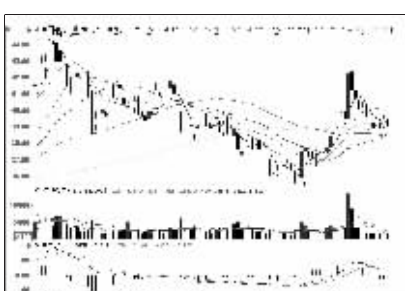
民生银行 (600016):短线有望反弹



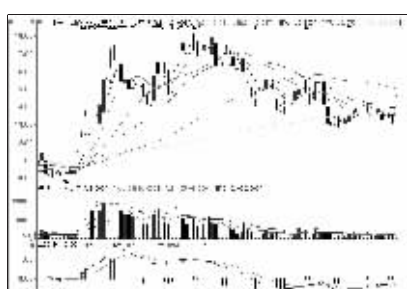
海信电器 (600060):破位下行,回避



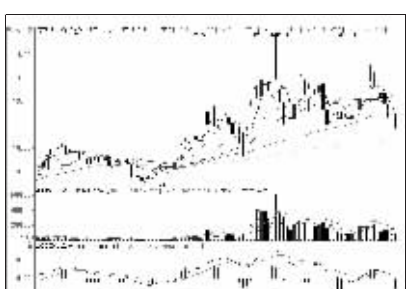
湘电股份 (600416):破位下行,观望



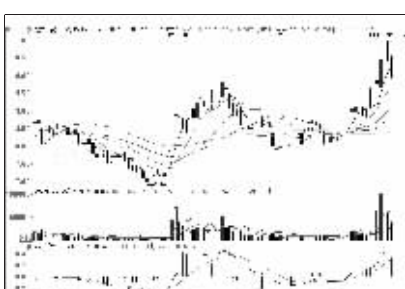
中国平安 (601318):上行阻力较大



三丰智能 (800276):短线反弹高度有限



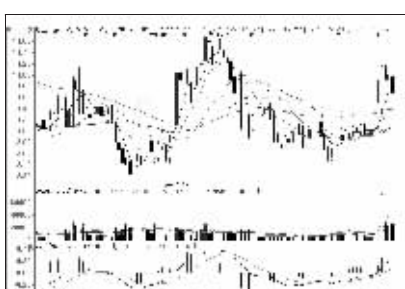
动力源 (600405):破位下行,观望



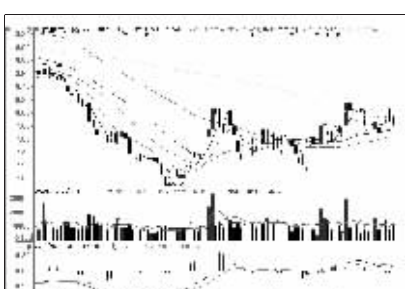
歌华有线 (600037):短线或维持震荡



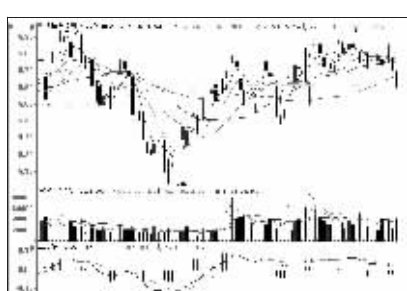
特变电工 (600089):弱势格局,回避



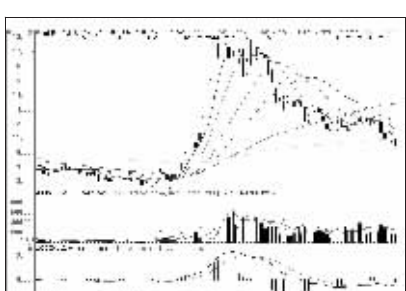
浙江众成 (002522):区间震荡概率大



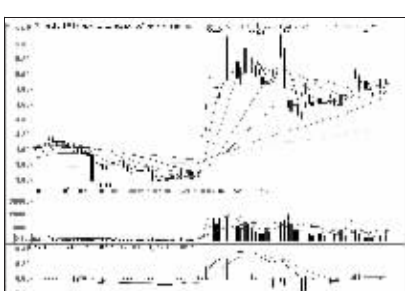
民生银行 (600016):短线有望反弹



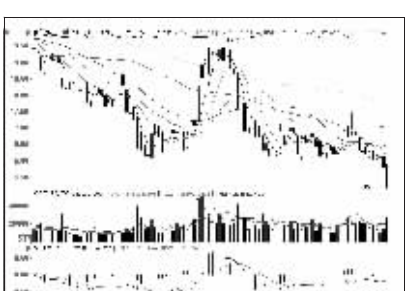
大连友谊 (000679):破位下行,回避



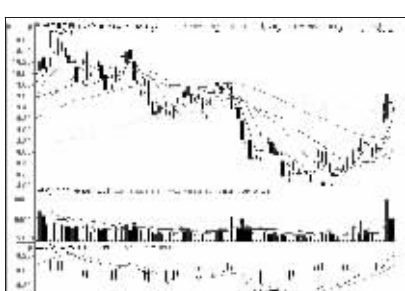
金瑞科技 (600390):短线或有反弹



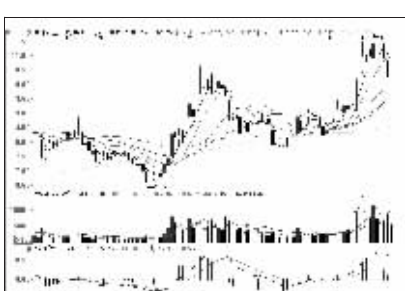
中信银行 (601998):维持震荡整理格局



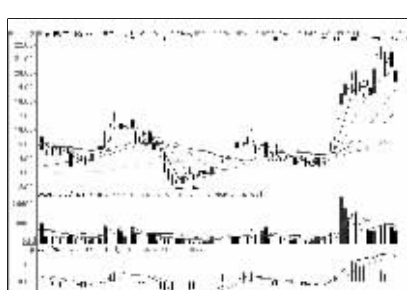
康美药业 (600518):弱势格局,回避



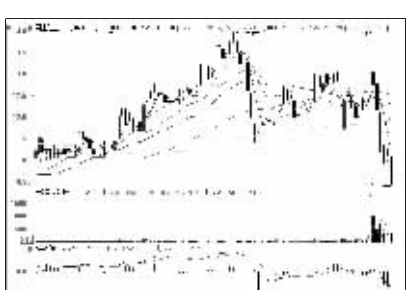
长江证券 (000783):横盘整理概率大



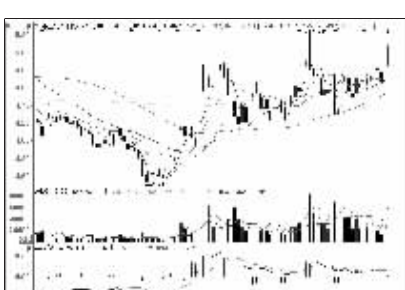
中体产业 (600158):冲高回落,震荡整理



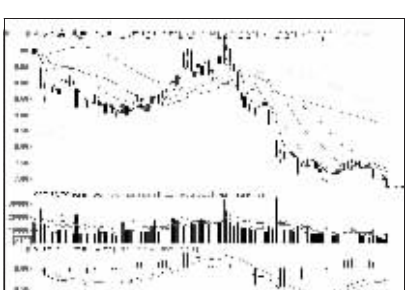
邦讯技术 (800312):回调后仍或走高,关注



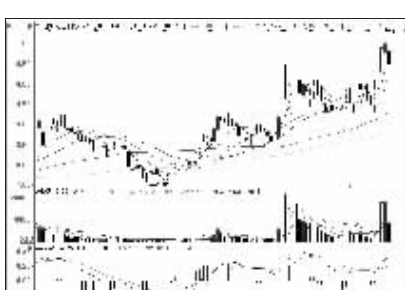
国通管业 (600444):弱势格局,回避



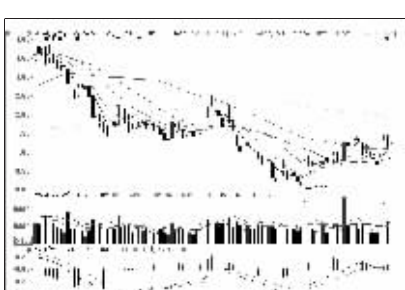
华业地产 (600240):横盘整理,观望



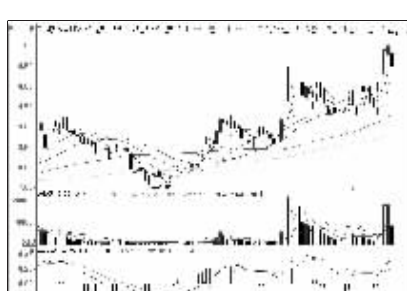
苏宁云商 (002024):弱势难改,观望



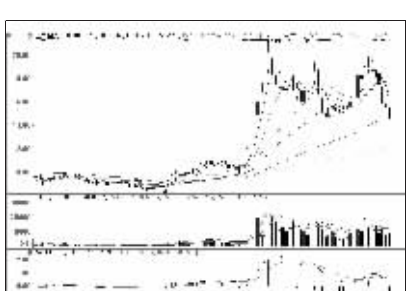
雪人股份 (002639):弱势格局,观望



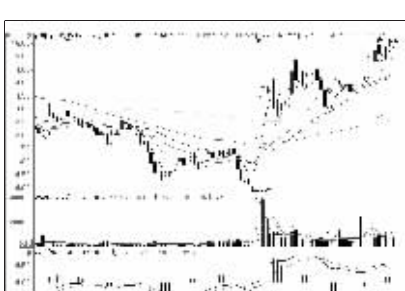
平安银行 (000001):仍有上涨空间



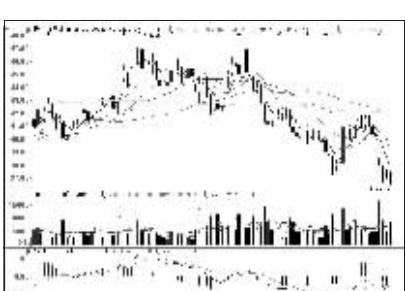
新都化工 (002539):短期或维持震荡



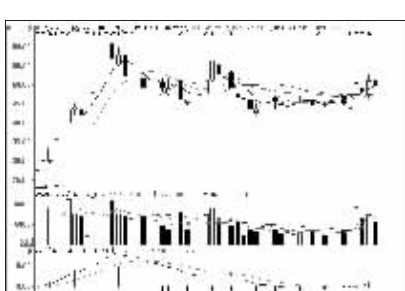
上海普天 (600680):持续下挫,或有反弹



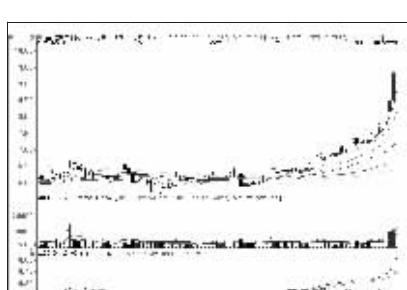
新黄浦 (600638):有望突破前高



天士力 (600535):仍有下行空间



光环新网 (800383):涨幅已大,回避为宜



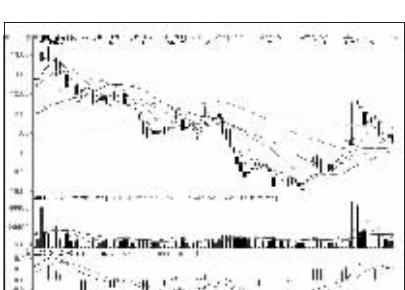
金地集团 (600383):仍或震荡上涨



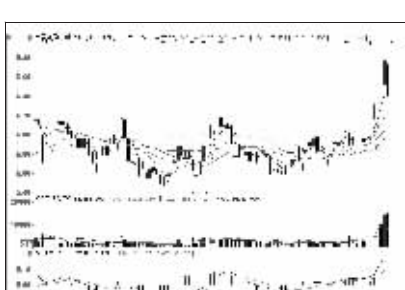
泰山石油 (000554):破位下行,回避



辽宁成大 (600739):低位整理概率大



中信证券 (600030):弱势格局,观望



桐昆股份 (601233):短期或震荡走高



看股票 买彩票 全搞定 大智慧手机版 d.wapgw.cn