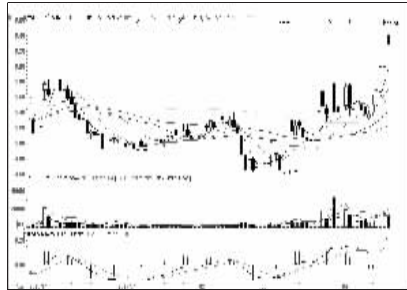


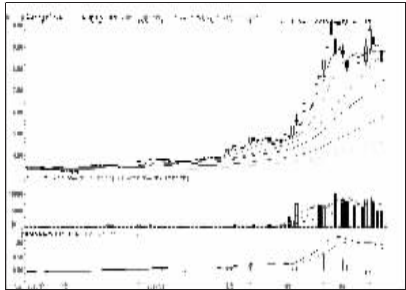
股东人数增减前10

股东人数减少前10



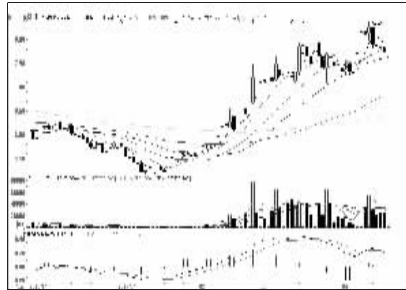
大名城 (600094):短线或有震荡

股东人数增加前10



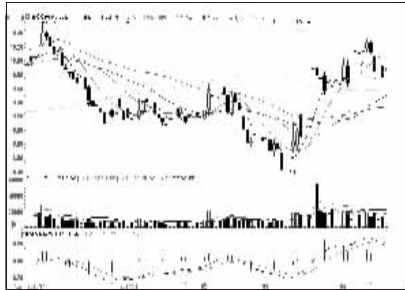
宝硕股份 (600155):高位震荡,观望

资金流入金额前10



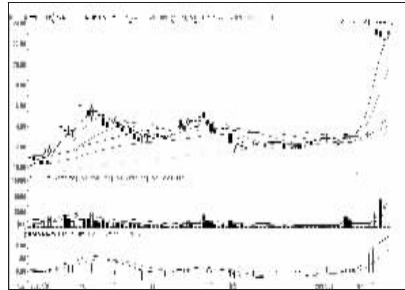
福建水泥 (600802):箱体震荡,观望

资金流出金额前10



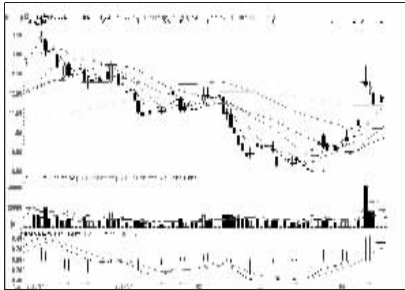
浦发银行 (600000):短线或有反弹

成交突增前10

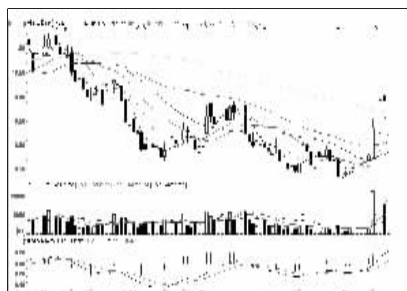


新世纪 (002280):短线或有回调

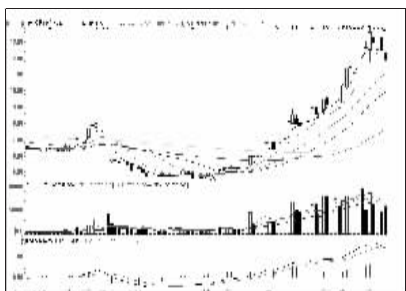
成交金额前8



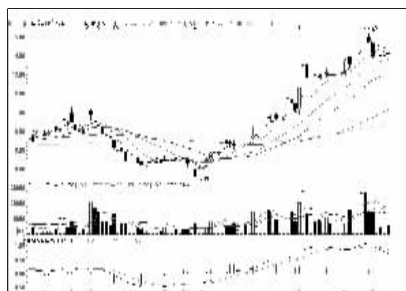
中信证券 (600030):横盘整理概率大



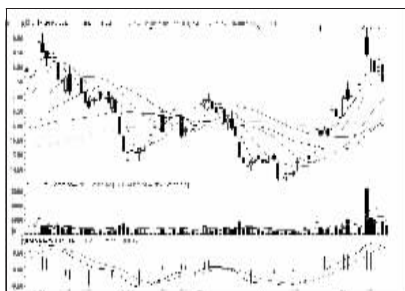
雏鹰农牧 (002477):短线或区间震荡



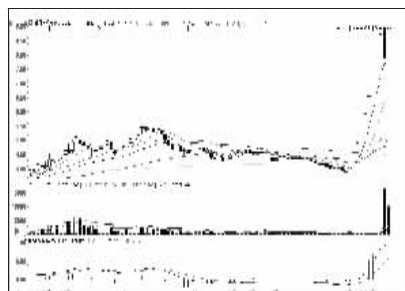
廊坊发展 (600149):短线仍有回调可能



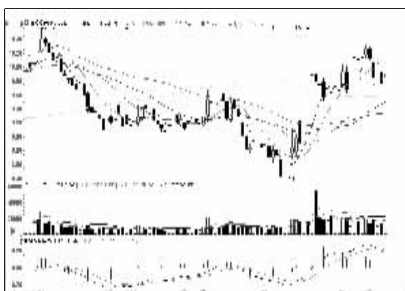
万向德农 (600371):仍有震荡走高空间



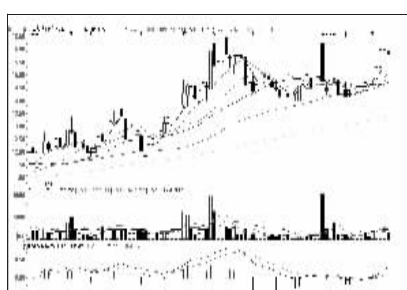
海螺水泥 (600585):区间震荡概率大



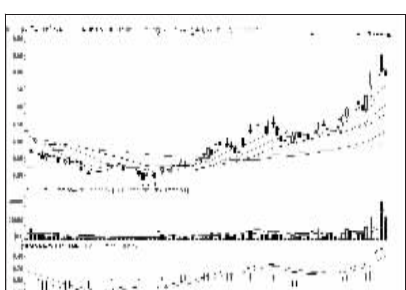
爱使股份 (600652):仍有回调可能



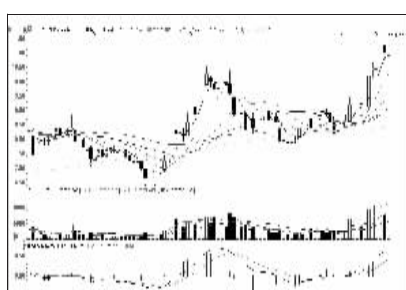
浦发银行 (600000):短线或有反弹



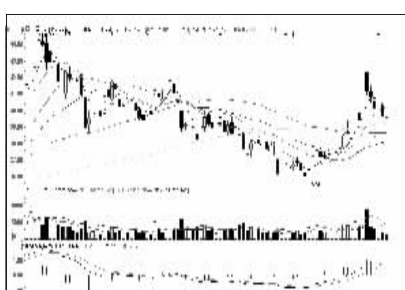
万安科技 (002590):接近前期高点,或有反复



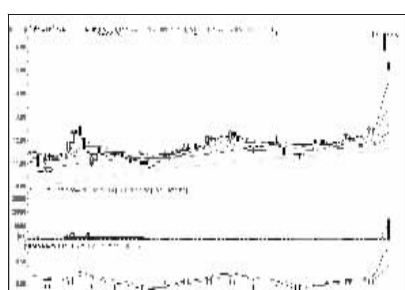
精伦电子 (600355):区间震荡概率大



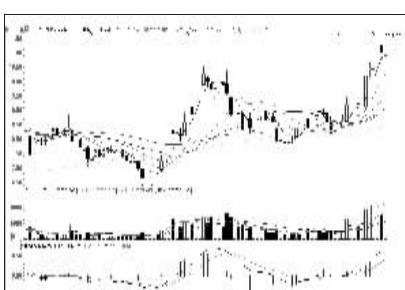
中体产业 (600158):仍有震荡上涨可能



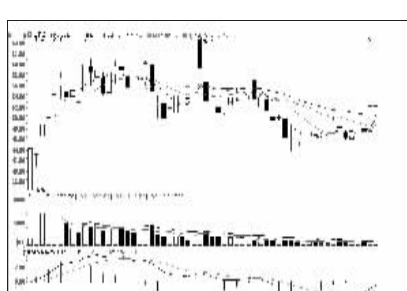
中国平安 (601318):缩量回调,观望



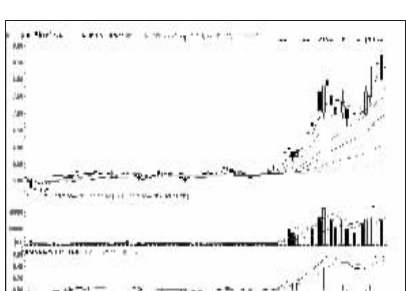
宁波热电 (600982):冲高回落,暂宜观望



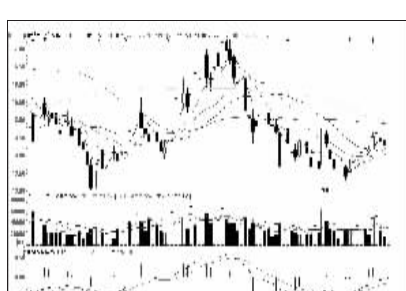
中体产业 (600158):仍有震荡上涨可能



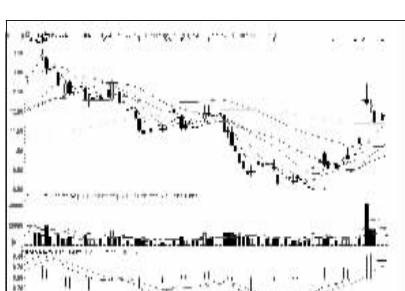
全通教育 (800359):短线或维持震荡期



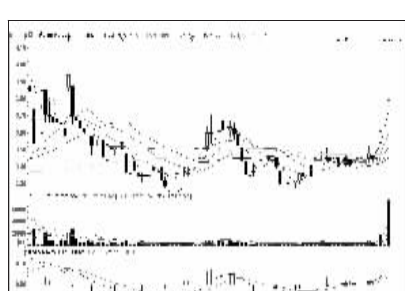
冀东装备 (000856):或维持区间震荡



鹏博士 (600804):区间震荡概率大



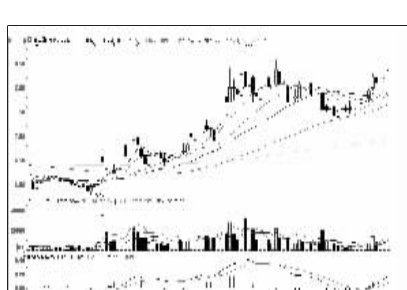
中信证券 (600030):横盘整理概率大



宁波海运 (600798):区间震荡概率大



中国平安 (601318):缩量回调,观望



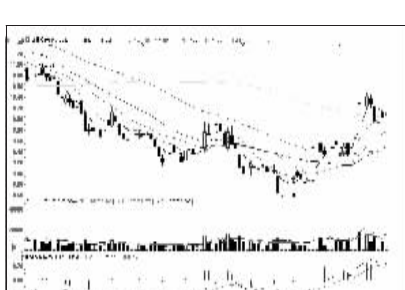
亚宝药业 (600351):上方仍有空间



国通管业 (600444):仍有震荡上涨可能



百视通 (600637):箱体震荡,观望为宜



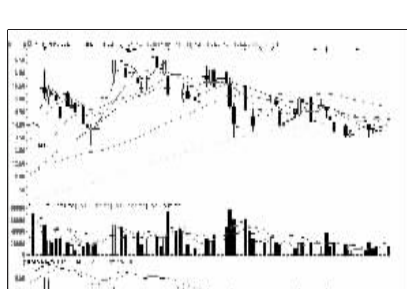
兴业银行 (601166):获均线支撑,继续持有



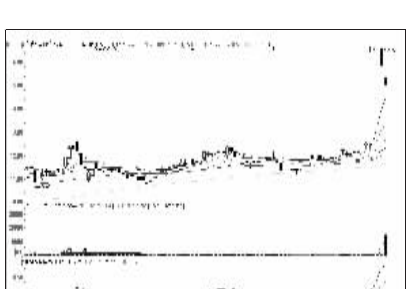
华数传媒 (000156):短线仍有回调可能



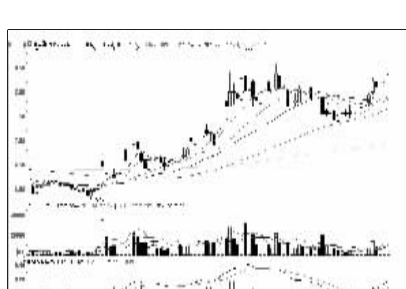
兴业银行 (601166):获均线支撑,继续持有



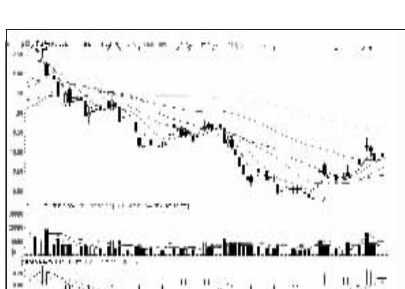
回天胶业 (800041):短线或有反弹



宁波热电 (600982):冲高回落,暂宜观望



亚宝药业 (600351):上方仍有空间



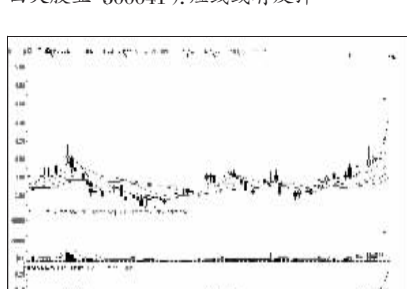
海通证券 (600837):震荡整理概率大



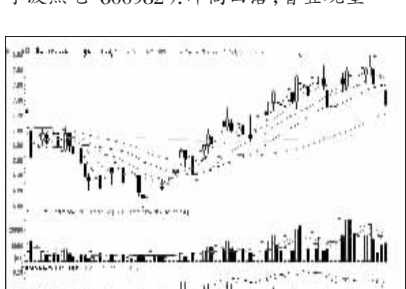
青松建化 (600425):高位震荡概率大



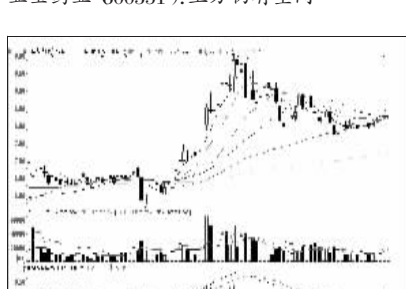
海螺水泥 (600585):区间震荡概率大



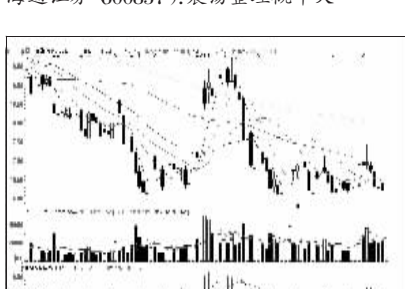
杭萧钢构 (600477):涨幅已大,不宜追高



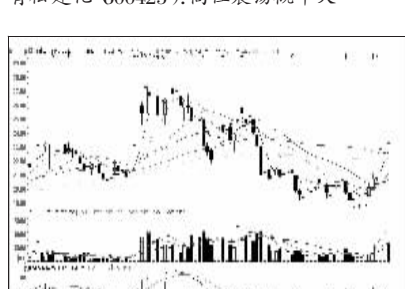
宏昌电子 (603002):震荡整理概率大



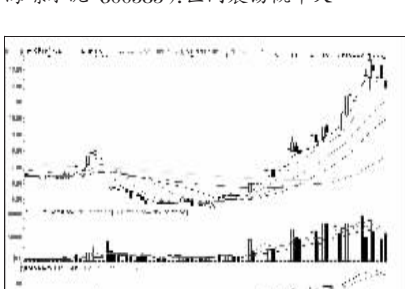
长电科技 (600584):有望冲击前高



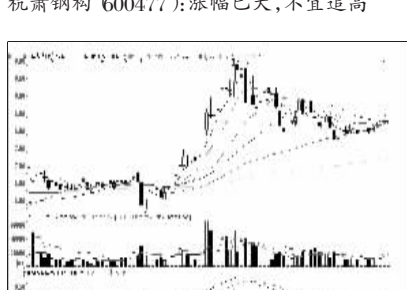
康美药业 (600518):弱势格局,观望



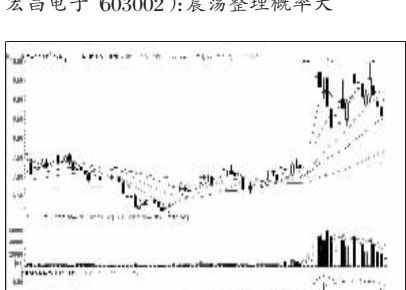
环旭电子 (601231):仍有上涨空间



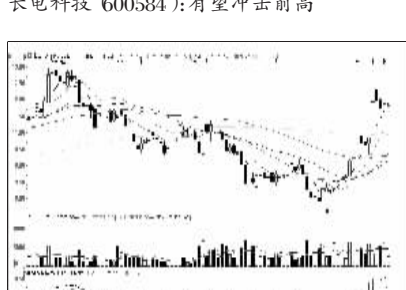
廊坊发展 (600149):短线调整后仍或反弹



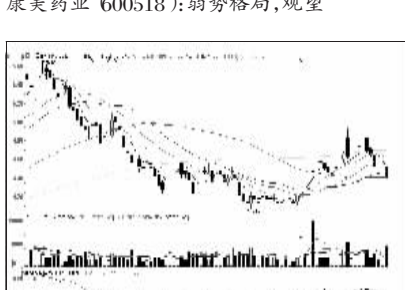
长电科技 (600584):有望冲击前高



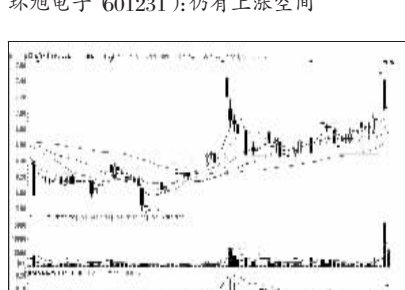
凌云股份 (600480):区间震荡概率大



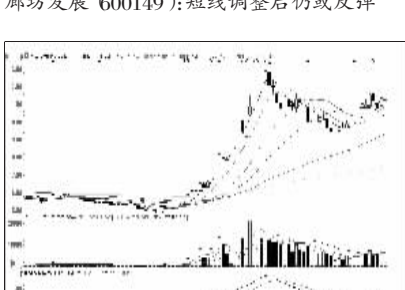
长安汽车 (000625):有望震荡走高



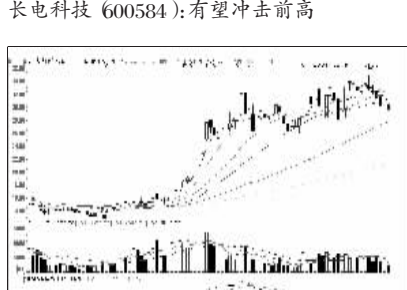
中国南车 (601766):弱势格局难改



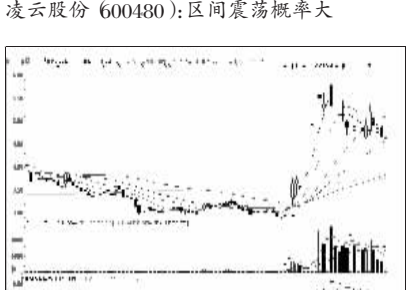
时代万恒 (600241):横盘整理概率大



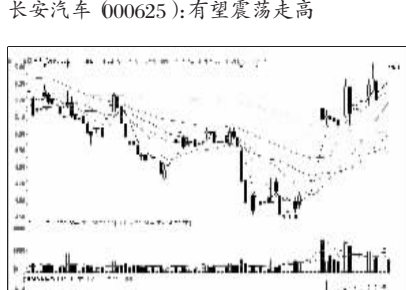
万向钱潮 (000559):有望突破前高



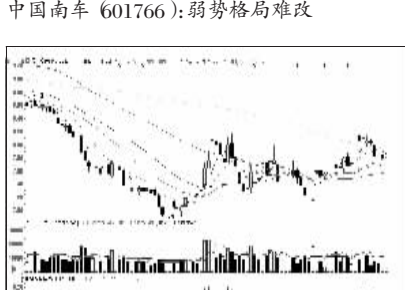
天玑科技 (800245):冲高回落,观望



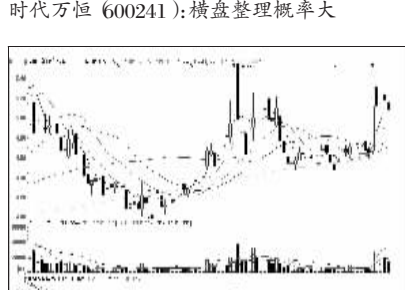
恒天天鹅 (000687):震荡后仍或走高



金融街 (000402):震荡走高概率大



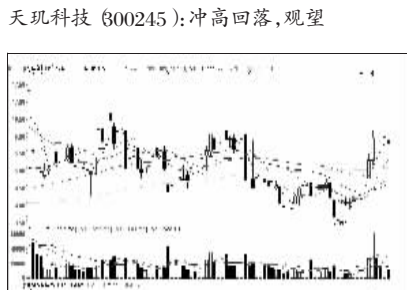
民生银行 (600016):区间震荡,观望



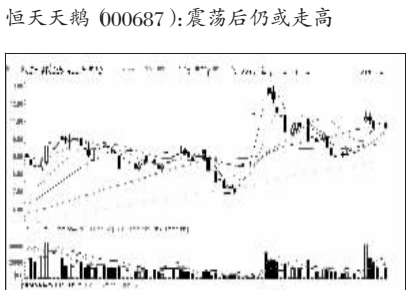
天利高新 (600339):或震荡走高



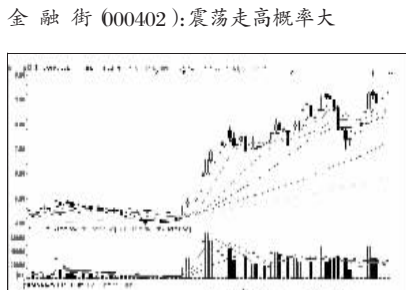
西藏发展 (000752):仍有小幅上涨空间



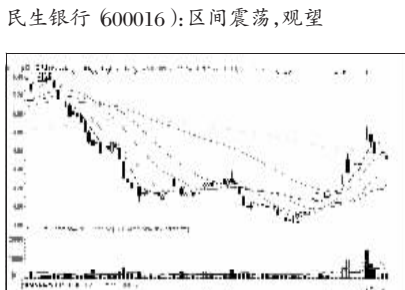
红宇新材 (800345):有震荡上行可能



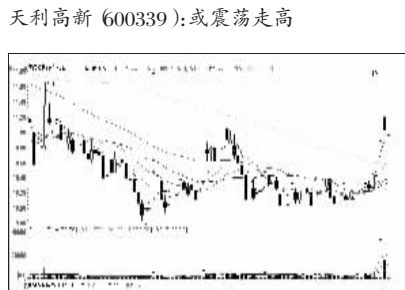
中京电子 (002579):区间震荡概率大



强生控股 (600662):仍有上涨可能



中国铁建 (601186):弱势格局,观望



西藏发展 (000752):仍有小幅上涨空间



看股票 买彩票
全搞定
大智慧手机版
d.wapgw.cn